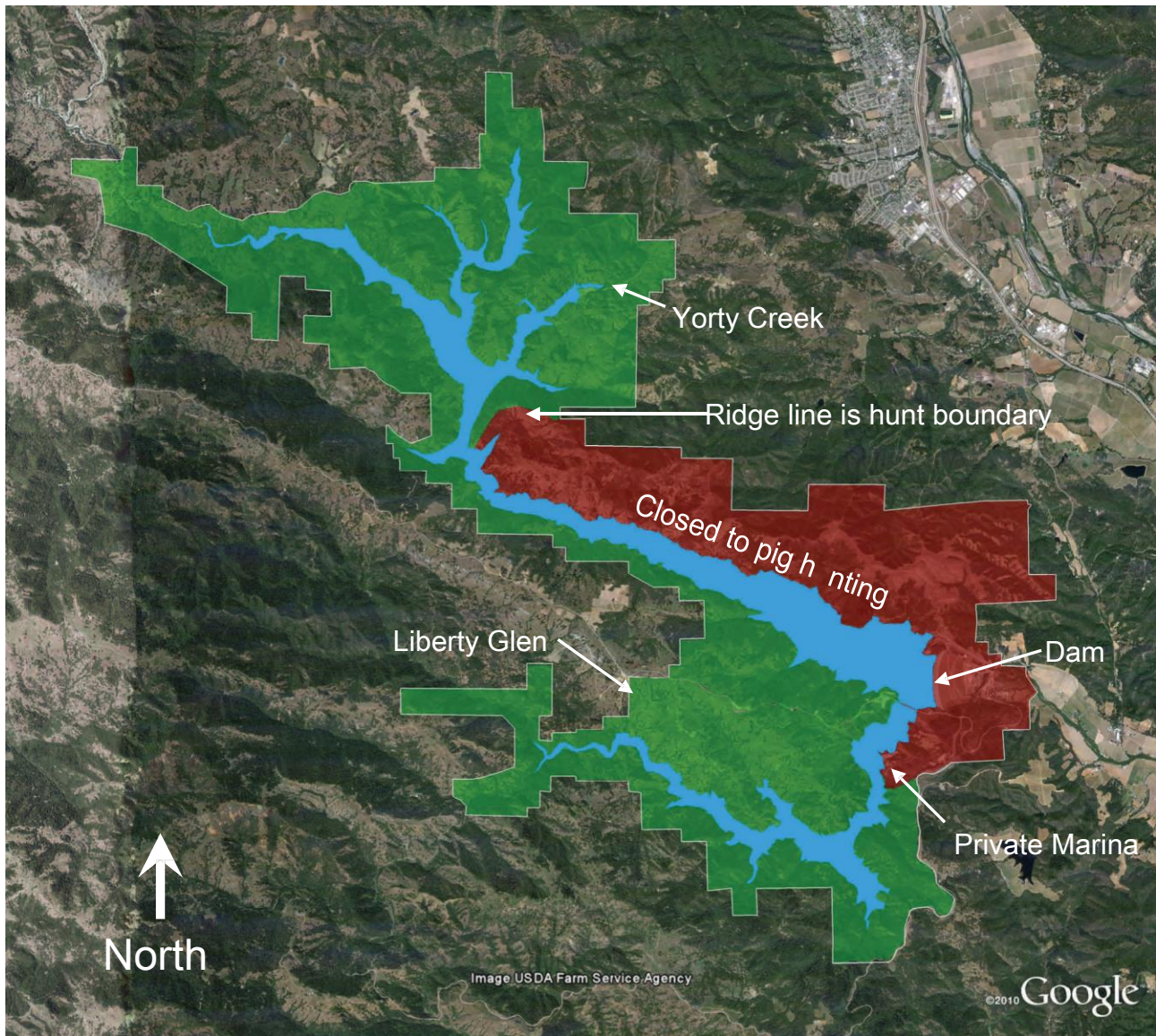


# Lake Sonoma Archery Feral Pig Hunt Areas

## November 23, 2013– March 27 2014



Hunters are responsible for following all Department of Fish and Game and Park regulations.

### Lake Sonoma Archery and Crossbow Hunt Areas



Areas open to pig hunting are shaded green



Areas closed to pig hunting are shaded red

Respect private property.

When in doubt ...  
**KEEP OUT!**

See reverse for typical park boundary fencing and signage



1-888-334-2258



# Typical park boundary fence and markings.



Note: Metal t post with hog wire topped with one strand of barbwire and one strand of bare wire. ( typical along most park boundaries )

Army Corps of Engineers property boundary marker. May be mounted on its own post or attached to the fence. DO NOT GO BEYOND THESE MARKERS OR FENCES even if it looks like there is a road you can follow.

**When in doubt KEEP OUT!**



# Lake Sonoma

2013-2014

## Pig Hunting Information

There will be no shotgun hunting this season- Archery and Crossbow Hunting Only.

Hunting dates are as follows:

Archery and Crossbow Only November 23, 2013- March 27, 2014

Hunters will initially be required to register with the park staff. **Be advised there will be no on-site registration at Headquarters as the Visitor Center is closed. There are several ways to register-- online, by FAX or mail- see instructions below.**

**NEW this year, you may register in person at the Lake Sonoma Marina office, off Skaggs Springs Road (\$5 convenience fee charged).**

Previous years' hunters must still register for the 2013-2014 season. The Friends of Lake Sonoma non-profit group will be coordinating hunt registration and will charge \$30 to complete the process. The money will be used for registration and educational material costs and for land stewardship within the park.

Hunters will be required to show a driver's license, valid CA hunting license, and a pig tag. They will then be issued a hunting pass and given a brief orientation on hunting at the park. In-person registration will begin September 26th. There is no maximum number of hunters for this hunt.

### To register long distance for Lake Sonoma Hunting Tags

Fax, email or mail a copy of your Drivers License, Hunting License and Pig Tag to our Visitor Center. These three items will fit on one 8 ½" by 11" paper. Include your telephone and fax numbers on the page.

Fax 707-431-1031

Email: Rachel Mack – [rachel.e.mack@usace.army.mil](mailto:rachel.e.mack@usace.army.mil)

We will fax, email, or mail the "Terms and Conditions" page of rules for you to read, sign and return to us.

When you return the "Terms and Conditions" page, we will call for your credit card information to complete the registration process. This year's fee is \$30.

We will then assign you a hunter number and mail out your vehicle hang tag and boat sticker to you. The first day of hunting is NOVEMBER 23. Please begin the long distance registration process early to allow time for mailing. Remember: the Visitor Center will not open until 9AM on November 23<sup>th</sup>.

**NOTE: DUE TO BUDGET CUTS SOME ACCESS POINTS TO THE PARK MAY BE CLOSED**

Lake Sonoma's shoreline will be off limits from November 23 through March 27 to any vessel that does not display a 2013-2014 hunting registration sticker, is not registered at a campsite, or whose operator/occupant is not within shouting distance of the vessel. Any vessel not meeting one of these three requirements will be considered "abandoned equipment" and its owner subject to citation (\$150.00) and possible impound fees.

Stay within park boundaries even if an injured animal crosses onto private land. Park rangers may not see you but our neighbors do and they are very vocal in their disapproval of trespass.

Hunting stands and game cameras are permitted provided that they do not permanently scar the trees.

Hunters are subject to all park rules and regulations, all county, state, and local laws, and California Department of Fish & Game regulations.

In accordance with California hunting regulations, feeding (baiting) of pigs is strictly prohibited.

Dogs may not be used while hunting.

Hunters may not possess a firearm (including a sidearm) while in the field.

Pigs must be gutted at least 100 yards away from any man made structure, trail or campground. Do not dispose of entrails in garbage cans; leave them in the field to attract other boar.

Hunters are required to possess a valid hunting license on their person and have pig tags with them while hunting.

## Commonly asked questions:

### **Where are the pigs?**

A: Signs of pig activity can be seen in all areas of the park.

### **Can I carry a side arm while hunting?**

A: No, you will have to rely on your skill and judgment in making a shot with your bow or cross bow.

### **Can I use the fire roads and trails in the park?**

A: You may hike on any fire road or trail at any time within the park to access hunting grounds. However you may not operate any motorized vehicle or use horses if the trails are closed for the rainy season. Also, you may not follow a fire road onto adjacent private property.

### **If I'm hunting for several days in a row, do I have to check in every day?**

A: No, you only need to check in on the first day of a multi-day hunt. We only ask that you drop your checkout card in a fee vault on the way out of the park so we can keep an accurate tally of how many hunters have participated and what kind of success rate you are having.