



**Legend**

 Project Boundary

1 in = 2,000 ft (at letter layout)



0 125 250 500 Meters

0 500 1,000 2,000 Feet

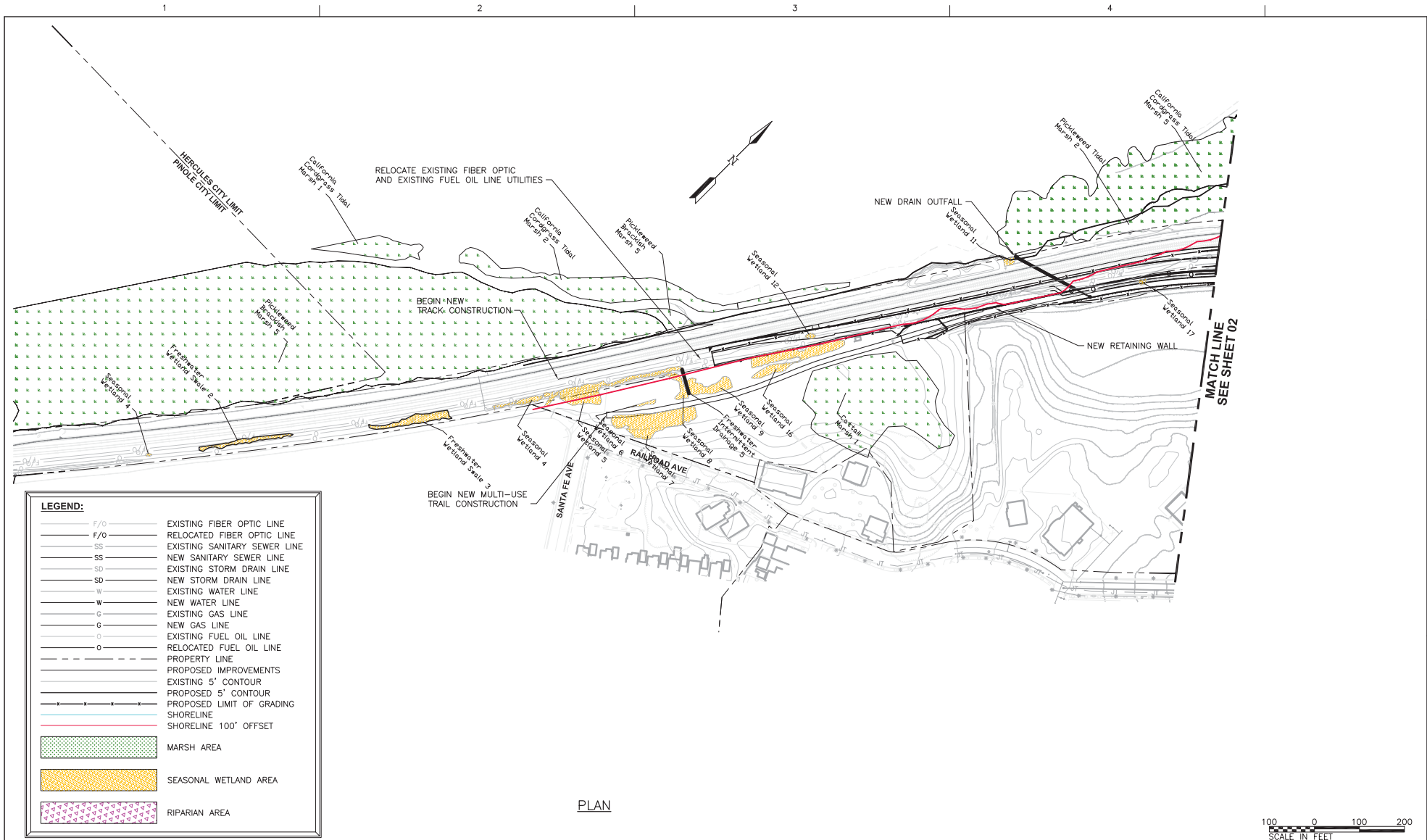
City of Hercules  
Hercules Intermodal Transit Facility  
Contra Costa County, California

Data Sources: Map information was compiled from the best available sources. No Warranty is made for its accuracy or completeness. Topographic Base Map, Aerial photography from ESRI ArcGIS Online; Hydrography from National Hydrography Dataset; NWI Data from U.S. Fish and Wildlife Service and soils data from USDA NRCS Soil Survey. Data is State Plane Feet, NAD83 Zone 3.

Figure 1: Project Location Map







**LEGEND:**

F/O	EXISTING FIBER OPTIC LINE
F/O	RELOCATED FIBER OPTIC LINE
SS	EXISTING SANITARY SEWER LINE
SS	NEW SANITARY SEWER LINE
SD	EXISTING STORM DRAIN LINE
SD	NEW STORM DRAIN LINE
W	EXISTING WATER LINE
W	NEW WATER LINE
G	EXISTING GAS LINE
G	NEW GAS LINE
O	EXISTING FUEL OIL LINE
O	RELOCATED FUEL OIL LINE
- - -	PROPERTY LINE
- - -	PROPOSED IMPROVEMENTS
- - -	EXISTING 5' CONTOUR
- - -	PROPOSED 5' CONTOUR
- - -	PROPOSED LIMIT OF GRADING
- - -	SHORELINE
- - -	SHORELINE 100' OFFSET
[Green Dotted Pattern]	MARSH AREA
[Yellow Dotted Pattern]	SEASONAL WETLAND AREA
[Pink Dotted Pattern]	RIPARIAN AREA

PLAN



Dec 11, 2012 2:22pm C:\working\hrc\0304089\HERC-ENVIRO-SITE-DETAIL.dwg - 1 erwin

**HDR**  
 HDR Engineering, Inc.  
 2121 N. California Blvd  
 Suite 475  
 Walnut Creek, CA 94596  
 925-474-2500

ISSUE	DATE	DESCRIPTION

DESIGNED BY	
CHECKED BY	
DRAWN BY	
APPROVED BY	
PROJECT NUMBER	31137

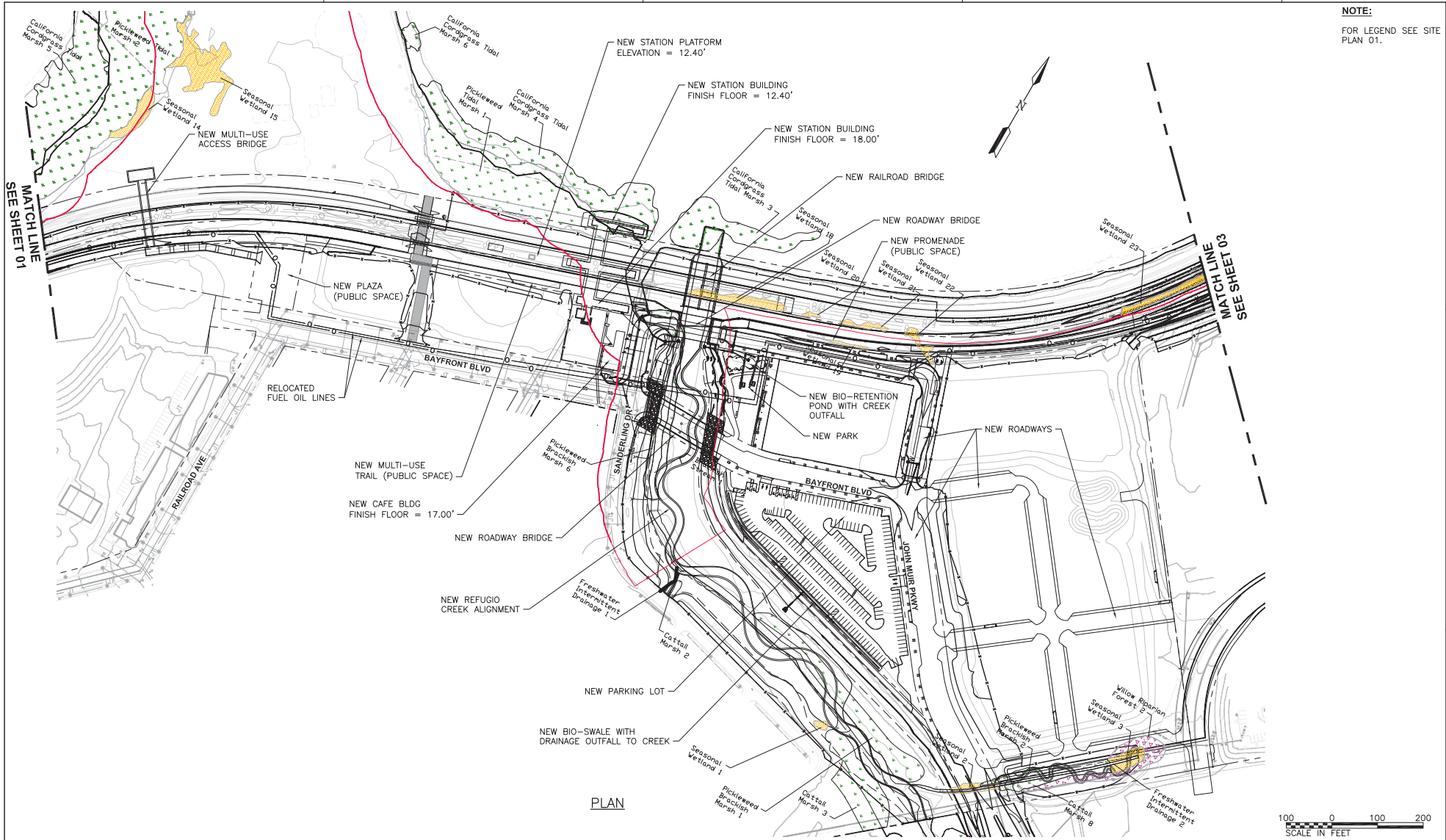
**PRELIMINARY  
 NOT FOR  
 CONSTRUCTION  
 OR  
 RECORDING**



**CITY OF HERCULES  
 CALIFORNIA**  
**CITY OF HERCULES  
 INTERMODAL TRANSIT  
 CENTER**

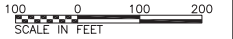
**SITE PLAN 01**

0 1" 2"	FILENAME	HERC-ENVIRO-SITE-DET	SHEET
CAUTION: THIS DRAWING MAY BE REDUCED	SCALE	1" = 100'	<b>01</b>



**NOTE:**  
FOR LEGEND SEE SITE PLAN 01.

PLAN



ISSUE	DATE	DESCRIPTION

DESIGNED BY	
CHECKED BY	
DRAWN BY	
APPROVED BY	
PROJECT NUMBER	31137

**PRELIMINARY  
NOT FOR  
CONSTRUCTION  
OR  
RECORDING**



**CITY OF HERCULES  
CALIFORNIA  
INTERMODAL TRANSIT  
CENTER**

 CAUTION: THIS DRAWING MAY BE REDUCED		FILENAME HERC-ENVIRO-SITE-DET-PLAN	SHEET <b>02</b>
SCALE		1" = 100'	

Dec 11, 2012 - 2:56pm C:\working\aac\0304089\HERC-ENVIRO-SITE-DETAIL.dwg - 2 - erwinm

**NOTE:**  
FOR LEGEND SEE SITE  
PLAN 01.



PLAN



ISSUE	DATE	DESCRIPTION

DESIGNED BY	
CHECKED BY	
DRAWN BY	
APPROVED BY	
PROJECT NUMBER	31137

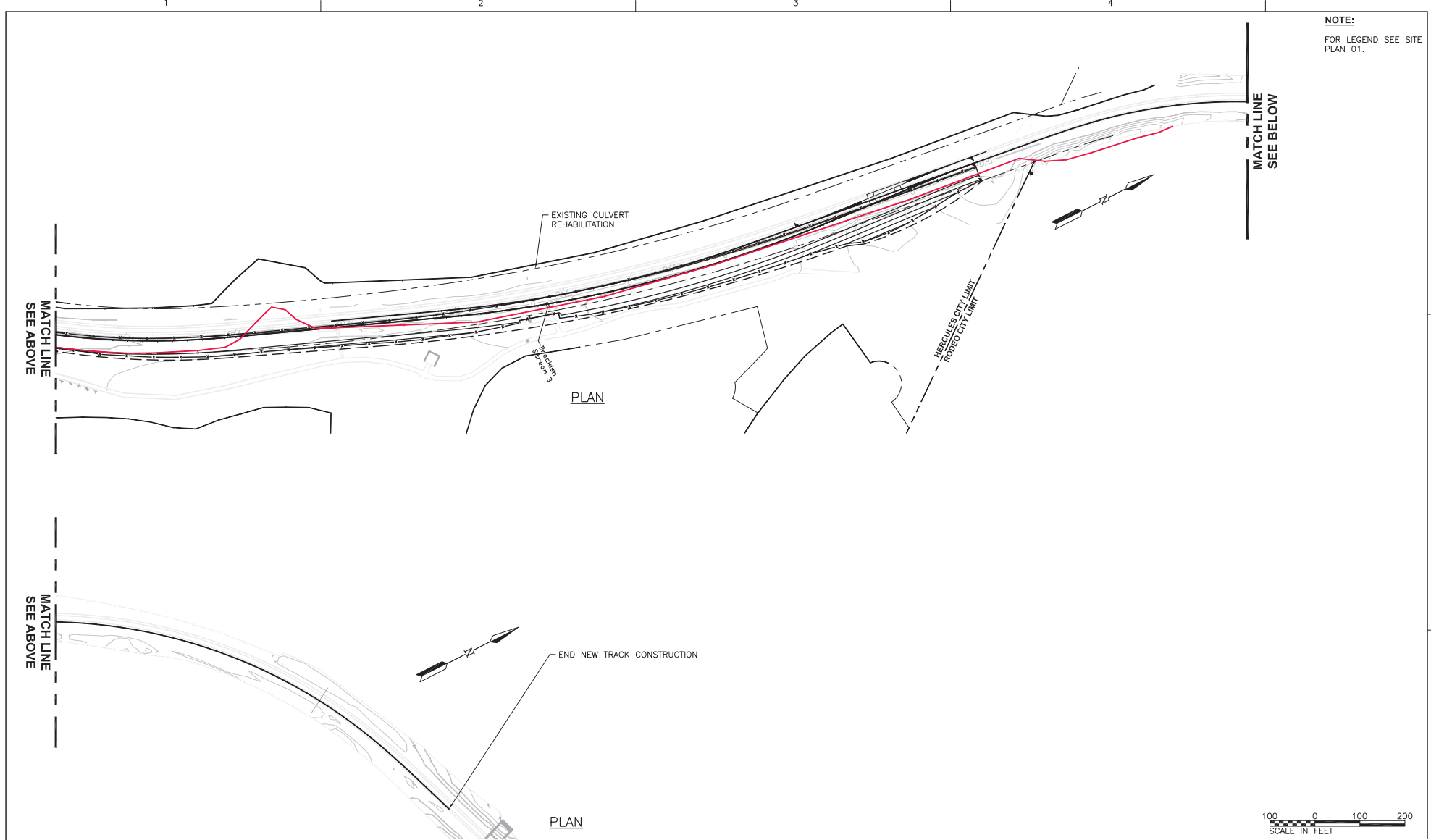
**PRELIMINARY  
NOT FOR  
CONSTRUCTION  
OR  
RECORDING**



**CITY OF HERCULES  
CALIFORNIA  
INTERMODAL TRANSIT  
CENTER**

SCALE IN FEET		SITE PLAN 03	
0	100	FILENAME	HERC-ENVIRO-SITE-DET
CAUTION: THIS DRAWING MAY BE REDUCED	200	SCALE	1" = 100'
			<b>03</b>

Dec 11, 2012 2:23pm C:\working\hrc\0304089\HERC-ENVIRO-SITE-DETAIL.dwg - 4 erwinm



**NOTE:**  
FOR LEGEND SEE SITE  
PLAN 01.



ISSUE	DATE	DESCRIPTION

DESIGNED BY	
CHECKED BY	
DRAWN BY	
APPROVED BY	
PROJECT NUMBER	31137

**PRELIMINARY  
NOT FOR  
CONSTRUCTION  
OR  
RECORDING**



**CITY OF HERCULES  
CALIFORNIA  
INTERMODAL TRANSIT  
CENTER**

<b>SITE PLAN 04</b>	
 CAUTION: THIS DRAWING MAY BE REDUCED	FILENAME: HERC-ENVIRO-SITE-DET SCALE: 1" = 100' SHEET: <b>04</b>