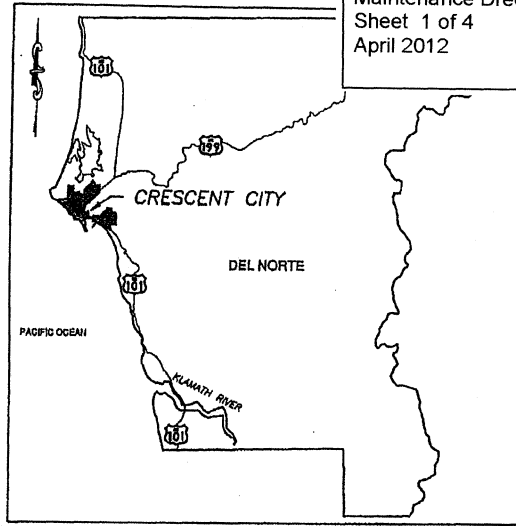


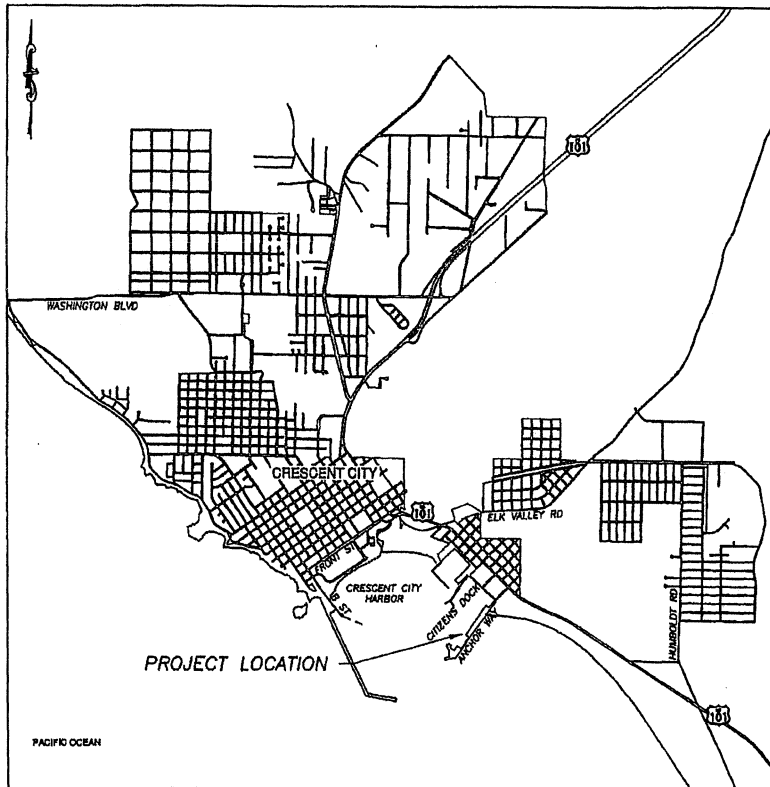
USACE File: 2012-00061  
 Crescent City Outer Harbor  
 Maintenance Dredging  
 Sheet 1 of 4  
 April 2012



STATE MAP  
 NTS



COUNTY MAP  
 NTS



CITY MAP  
 NTS

S:\4134-3-11-11 Tsunami entrance damage\dwg\EXHIBITS\_20120130.dwg

**STOVER ENGINEERING**  
 Civil Engineers and Consultants  
 PO BOX 783 - 711 H STREET  
 CRESCENT CITY, CA 95531 - 707-466-8742

CRESCENT CITY HARBOR DISTRICT  
 CRESCENT CITY, CA

CDP APPLICATION  
 OUTER BOAT BASIN PROJECTS

ONE INCH

NTS

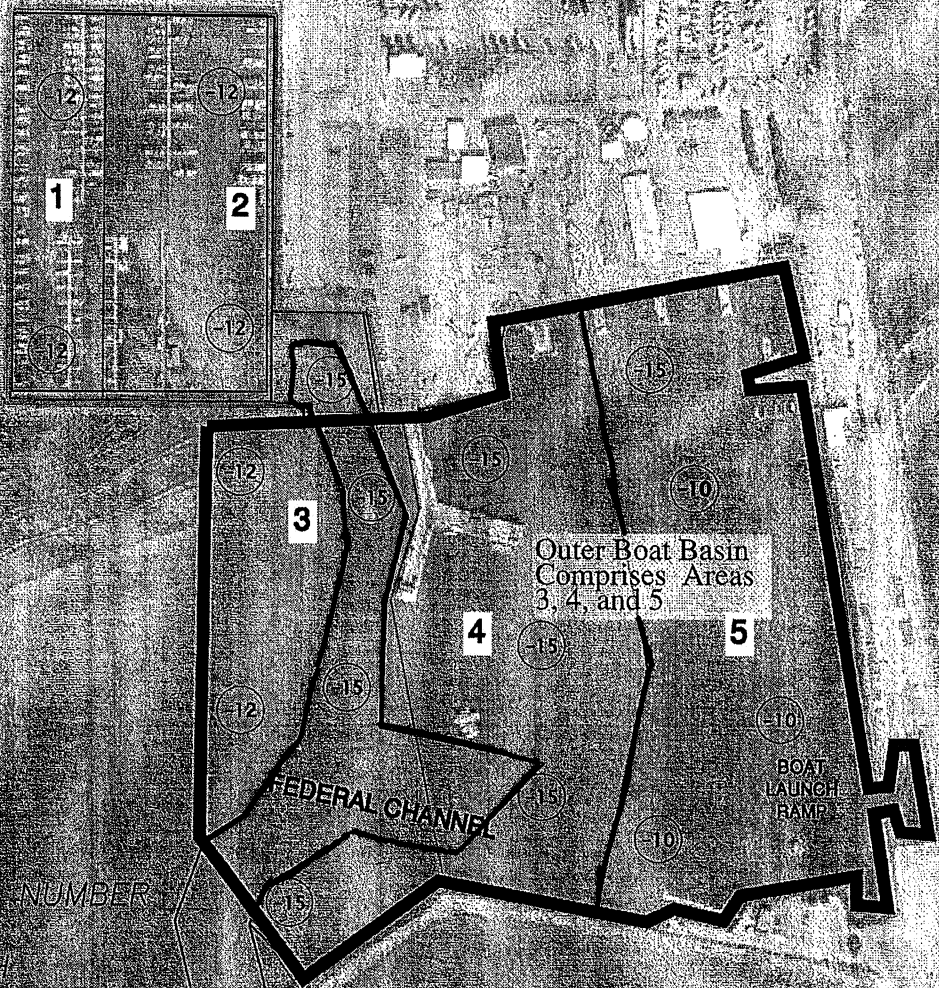
01/30/12

JN:4135

FIGURE 1: VICINITY MAP

8/15/2011 1:55 PM STOVER ENGINEERING SHALL NOT BE RESPONSIBLE FOR THE ACCURACY OR COMPLETENESS OF ELECTRONIC COPIES OF THIS

**USACE File: 2012-00061**  
 Crescent City Outer Harbor  
 Maintenance Dredging  
 Sheet 2 of 4  
 April 2012



**LEGEND**

**3** DREDGE AREA NUMBER

**(-15)** DESIGN DEPTH

**ACREAGE OF DREDGE AREAS**

AREA	ACRES
1	5.7
2	12.3
3	17.3
4	17.9
5	22.4

**Attachment 2**

**STOVER ENGINEERING**  
 Civil Engineers and Consultants  
 PO BOX 783 - 711 H STREET  
 CRESCENT CITY, CA 95531 - 707-465-6742

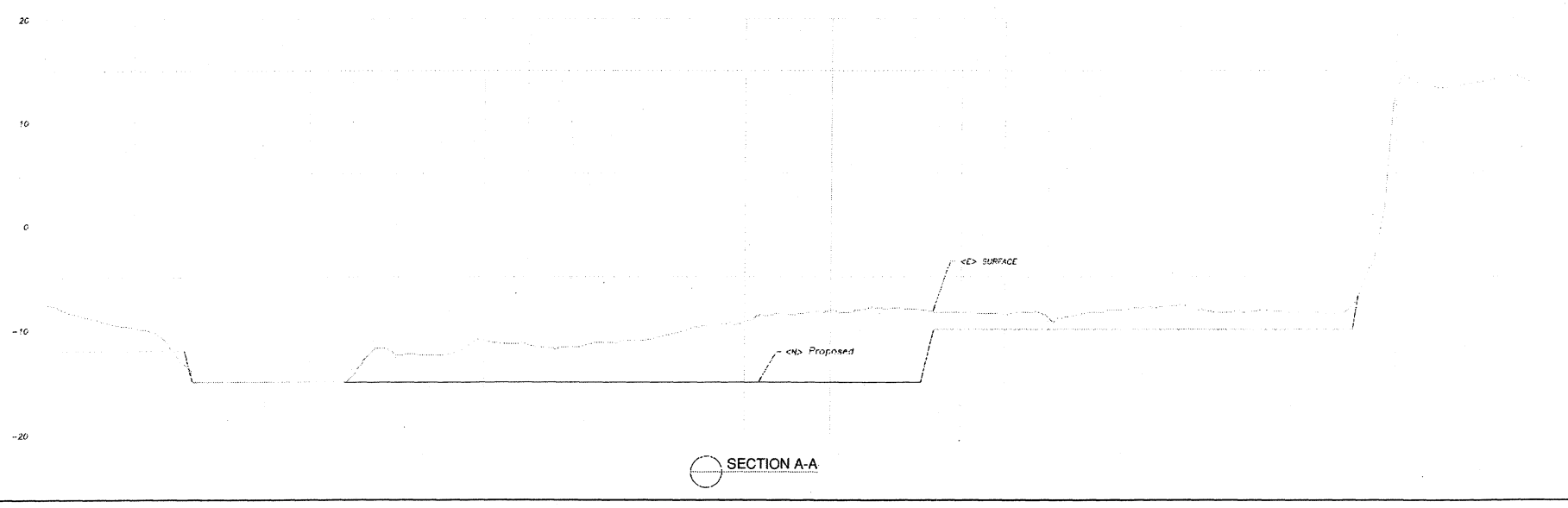
**CRESCENT CITY HARBOR DISTRICT**  
**MAINTENANCE DREDGING**

**DREDGE AREA**

ONE INCH NTS 08/15/11 4135 FIGURE No. 1.0

S:\4135 - OUTER BOAT BASIN DREDGING\dwg\4135-DREDGING AREAS\_20110815.dwg

3/21/2012 3:02 PM STOVER ENGINEERING SHALL NOT BE RESPONSIBLE FOR THE ACCURACY OR COMPLETENESS OF ELECTRONIC COPIES OF THIS PLAN SHEET.



SECTION A-A

APR	Revision
DATE	BY
DATE	BY
DATE	BY
DATE	BY
DATE	BY
DATE	BY
DATE	BY
DATE	BY
DATE	BY






**STOVER ENGINEERING**  
 Civil Engineers and Consultants  
 PO BOX 783 - 711 H STREET  
 CRESCENT CITY, CA 95531 - 707-465-8742

CRESCENT CITY HARBOR DISTRICT  
 OUTER BOAT BASIN DREDGING  
 CRESCENT CITY, CA  
 PROPOSED DREDGING CROSS SECTION

JOB NO. 4135  
 SCALE: H: 1"=60'  
 V: 1"=5'  
 DATE: 03/21/12  
 SHEET  
**1** OF 1



# Region 9 Ocean Dumping Sites

-  HOODS Dump Site
-  3-mile Maritime Limit (Nautical Miles)
-  10-meter Bathymetric Contour Lines

**USACE File: 2012-00061**  
 Crescent City Outer Harbor  
 Maintenance Dredging  
 Sheet 4 of 4  
 April 2012

**Data Sources:**  
 Bathymetric Contours: California Department of Fish and Game, 10 meter bathymetric contour lines to 600 meters depth on the California coast, July 2000  
 3-mile Maritime Limit: NOAA's Office of Coast Survey (OCS), September 2005  
 Shaded Relief: USGS National Elevation Data (100K)

WTR0601347.1 May 2006

