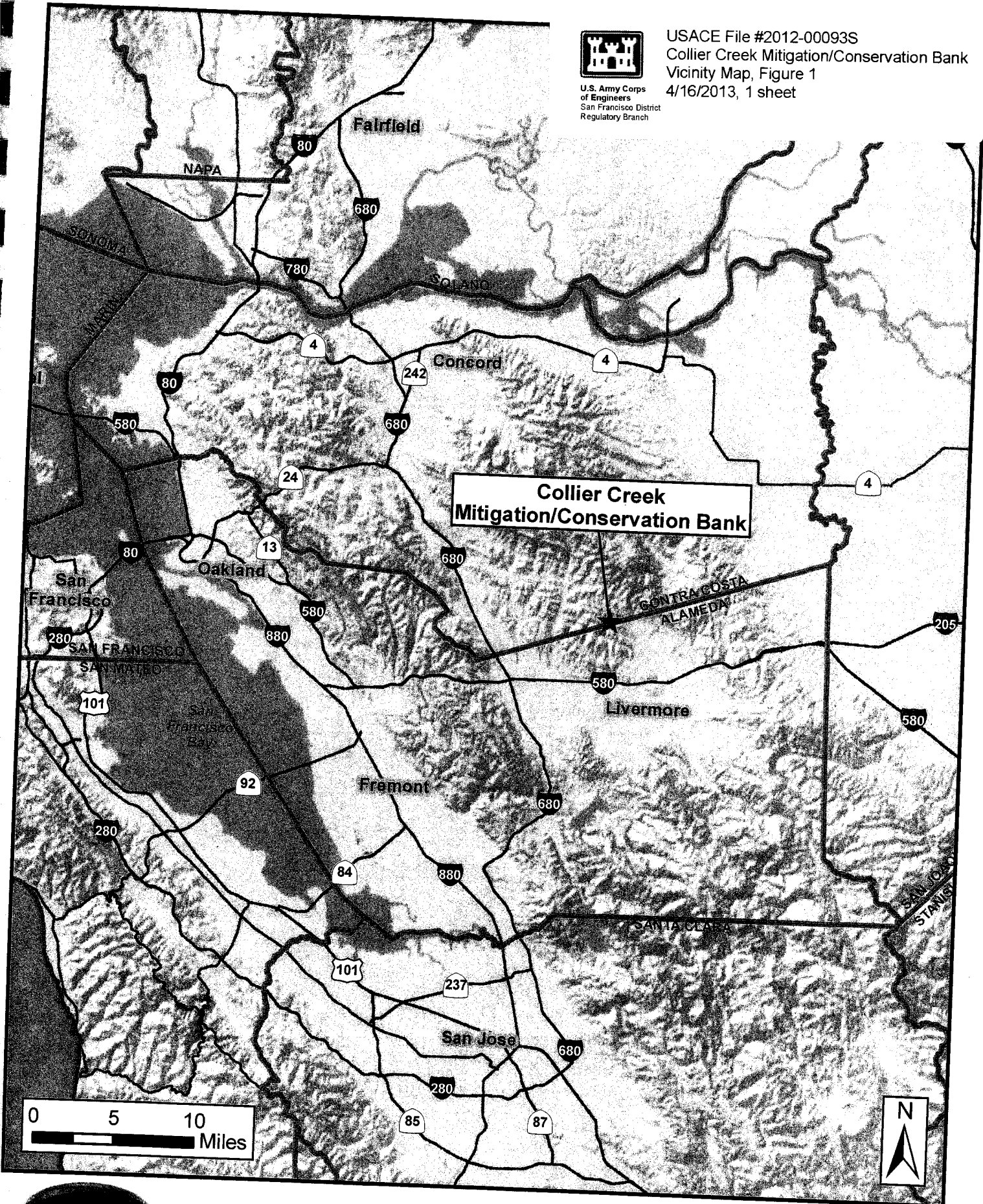




USACE File #2012-00093S
 Collier Creek Mitigation/Conservation Bank
 Vicinity Map, Figure 1
 4/16/2013, 1 sheet

U.S. Army Corps
 of Engineers
 San Francisco District
 Regulatory Branch



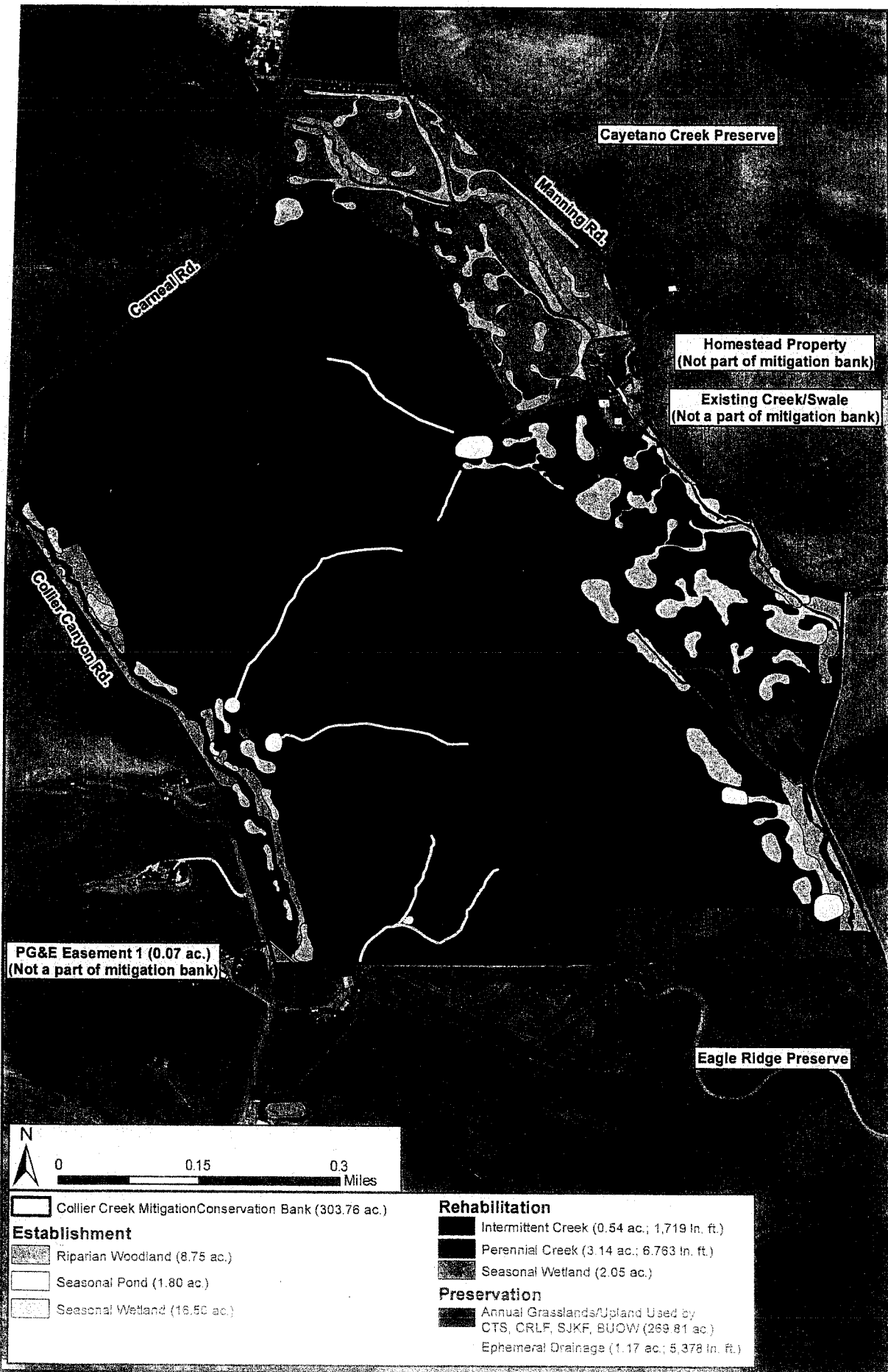
**Collier Creek
 Mitigation/Conservation Bank**

0 5 10
 Miles



3170 Crow Canyon Pl. Ste. 260
 San Ramon, CA 94583
 (925) 866-2111

**Figure 1: Regional Map
 Collier Creek Mitigation/Conservation Bank**
 Contra Costa and Alameda Counties, California



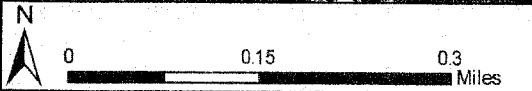
PG&E Easement 1 (0.07 ac.)
(Not a part of mitigation bank)

Cayetano Creek Preserve

Homestead Property
(Not a part of mitigation bank)

Existing Creek/Swale
(Not a part of mitigation bank)

Eagle Ridge Preserve



Collier Creek Mitigation/Conservation Bank (303.76 ac.)

Establishment

- Riparian Woodland (8.75 ac.)
- Seasonal Pond (1.80 ac.)
- Seasonal Wetland (16.50 ac.)

Rehabilitation

- Intermittent Creek (0.54 ac.; 1,719 ln. ft.)
- Perennial Creek (3.14 ac.; 6,763 ln. ft.)
- Seasonal Wetland (2.05 ac.)

Preservation

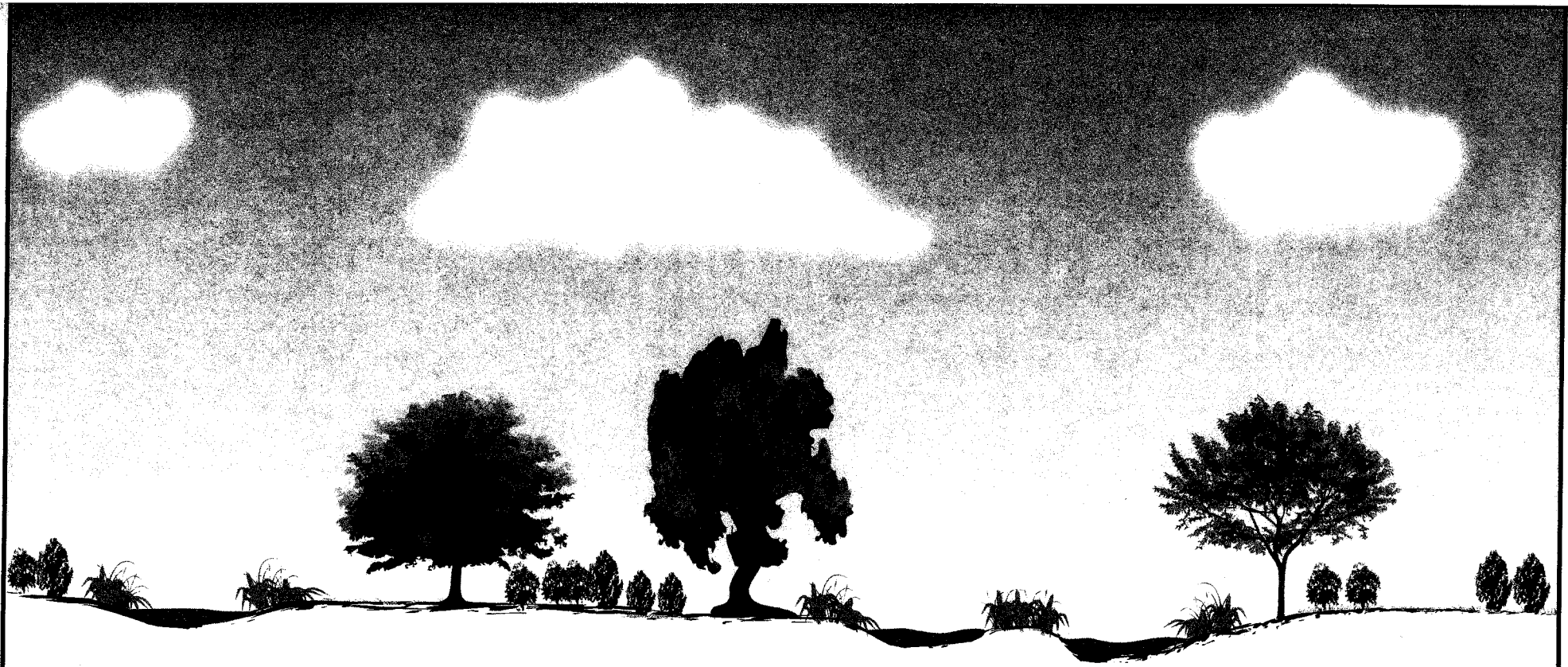
- Annual Grasslands/Upland Used by CTS, CRLF, SJKF, BUOW (269.81 ac.)
- Ephemeral Drainage (1.17 ac.; 5,378 ln. ft.)



3170 Crow Canyon Pl. Ste. 200
San Ramon, CA 94583
(925) 353-2111



USACE File #2012-000938
Collier Creek Mitigation/Conservation Bank
San Ramon, California
Figure 2
April 2012



Riparian	Seasonal Wetland	Riparian: 25 feet	Creek: 2-4 feet	Berm: 8-12 in.	Backwater Wetland: TBD	Riparian
----------	------------------	-------------------	-----------------	----------------	------------------------	----------



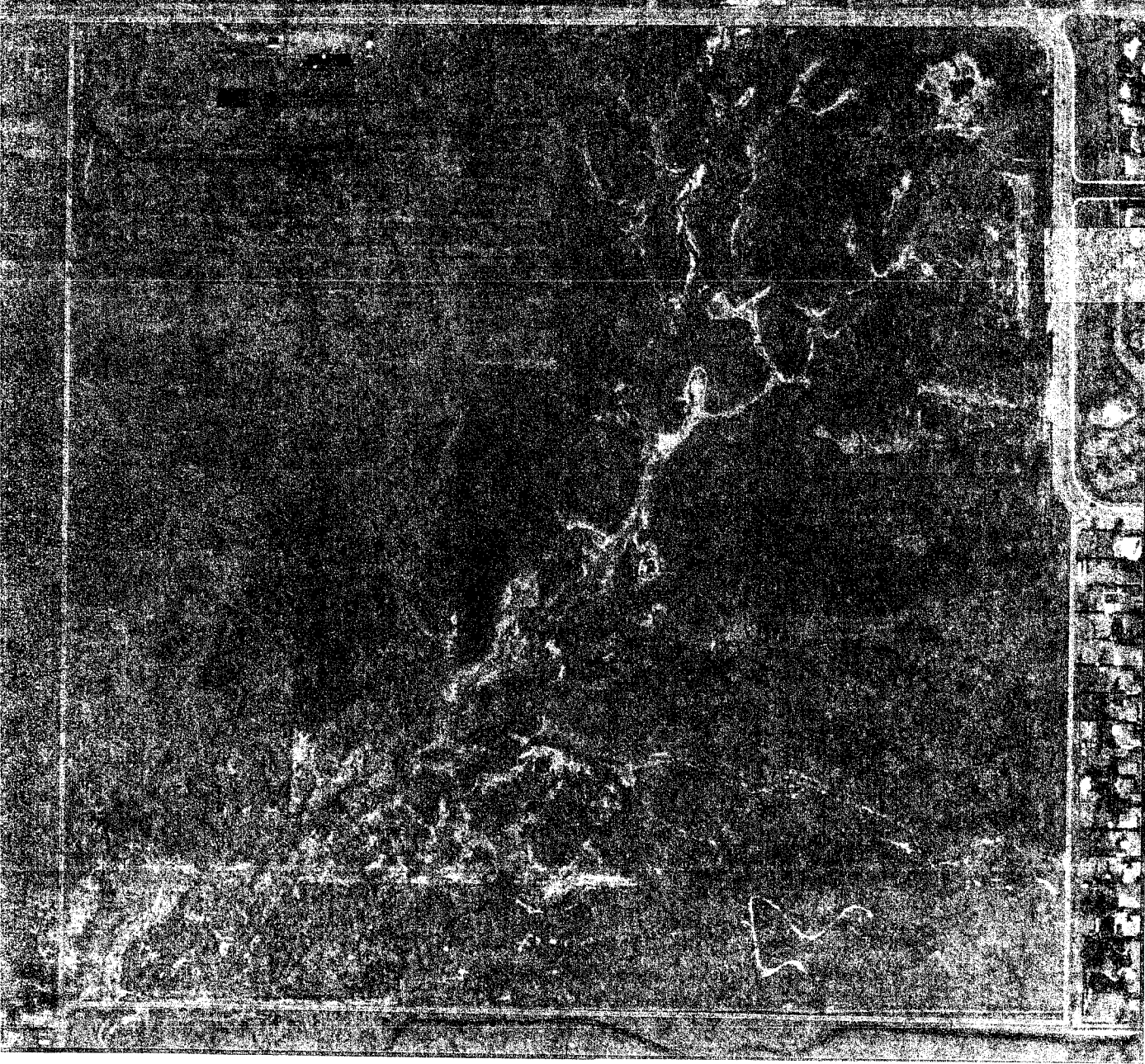
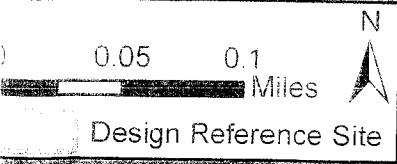
U.S. Army Corps
of Engineers
San Francisco District
Regulatory Branch

USACE File #2012-00093S
Collier Creek Mitigation/Conservation Bank
Conceptual Design of Backwater Wetlands, Figure 3
4/16/2013, 1 sheet



3170 Crow Canyon Pl. Ste. 260
San Ramon, CA 94583
Phone: (925) 866-2111

Figure 16: Conceptual Design of Backwater Wetlands
Collier Creek Mitigation/Conservation Bank
Contra Costa and Alameda Counties, California



Collier
S. 72



Environmental Inc. 10000 ...