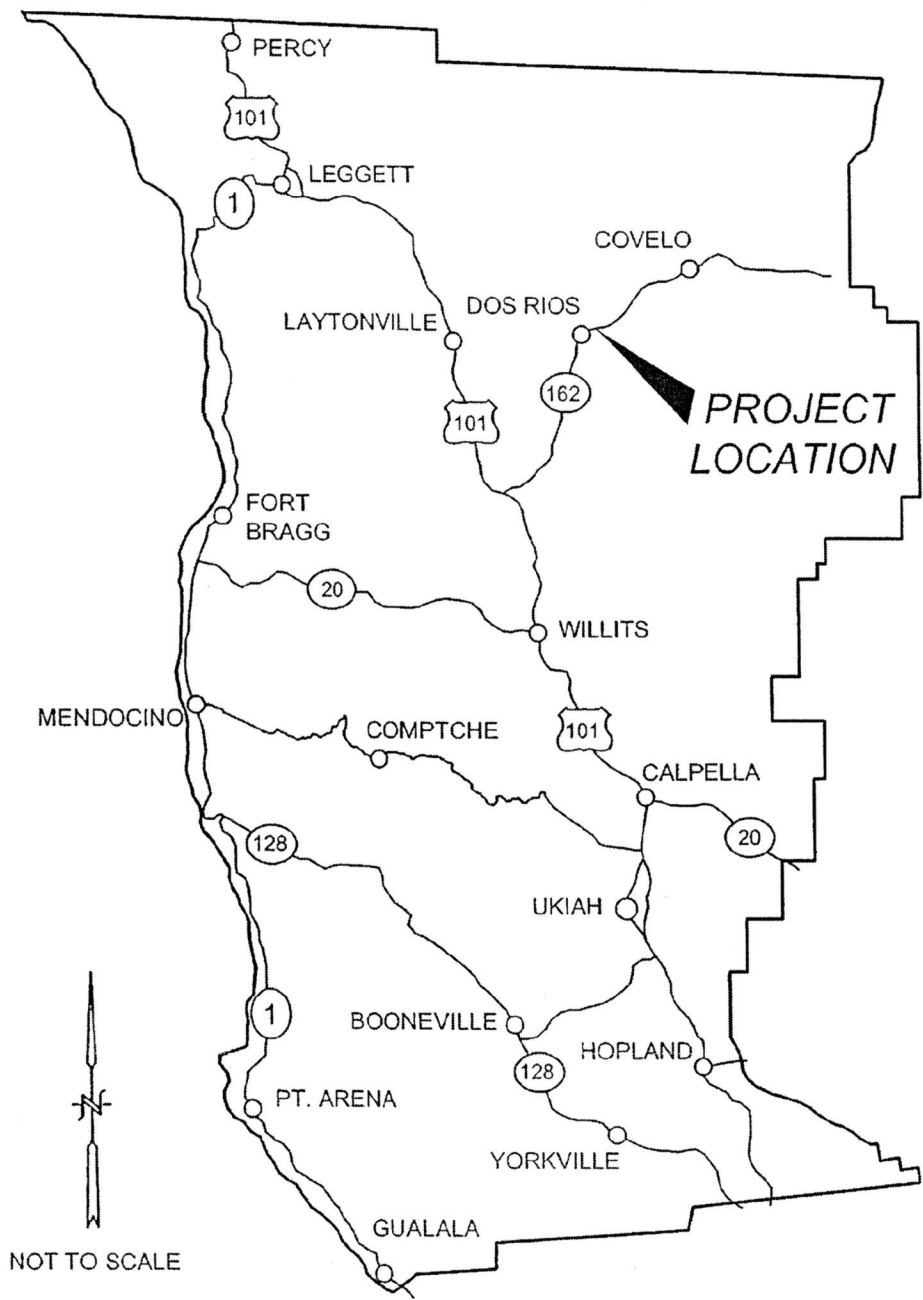
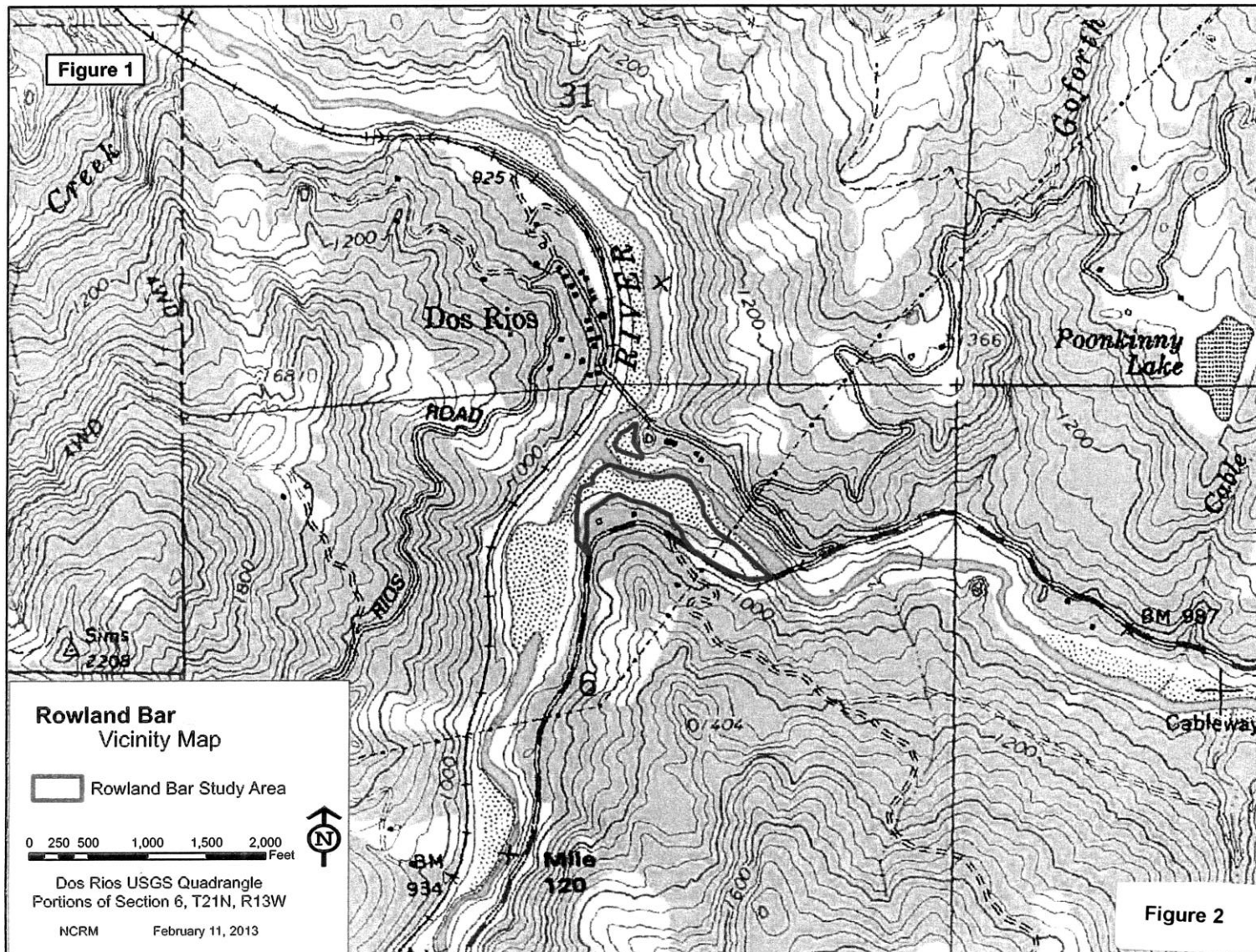


Z:\R11038\DRAWINGS\ROWLAND BAR\PDFs\VICINITY MAP

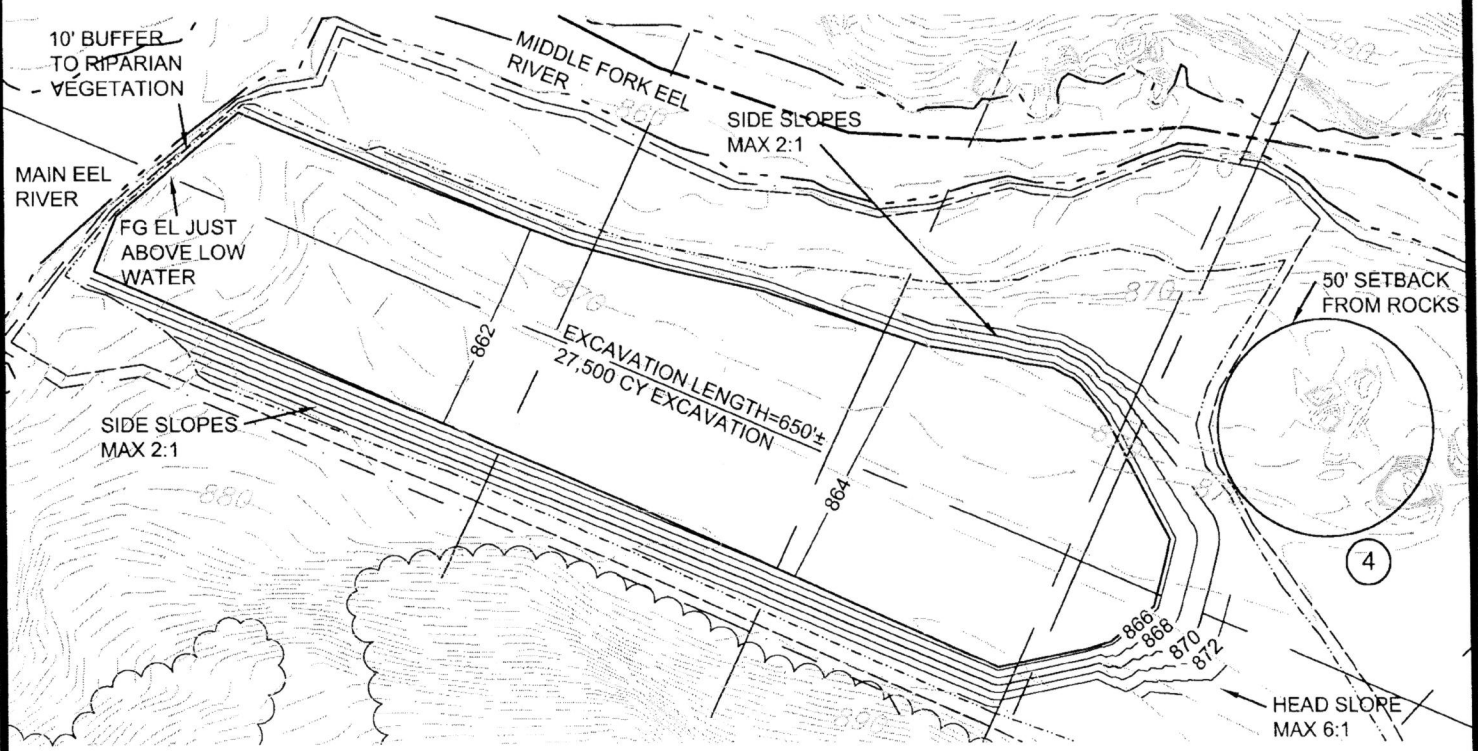
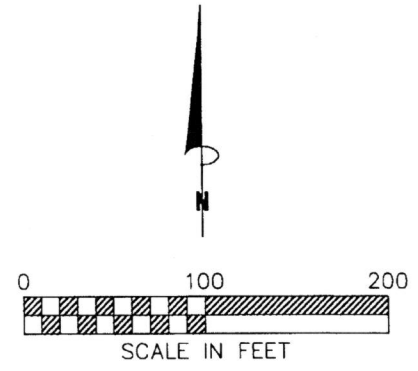


Reclamation Plan
Rowland Gravel Bar
Highway 162, PM 15.14
Dos Rios, CA
February 2013
FIGURE 1



NOTES:

- ① SHALLOW ALCOVE EXTRACTION CONFIGURATION IN ACCORDANCE WITH NOAA FISHERIES GUIDELINES AND ADAPTED TO SITE WITH ONSITE CONSULTATION WITH REPRESENTATIVES OF NOAA FISHERIES AND CALIFORNIA DEPARTMENT OF FISH AND WILDLIFE.
- ② HORIZONTAL AND VERTICAL OFFSETS FROM LOW FLOW WETTED CHANNEL WILL BE DEVELOPED THROUGH CONSULTATIONS WITH NOAA FISHERIES AND CALIFORNIA DEPARTMENT OF FISH AND WILDLIFE. TYPICALLY, A 20' TO 35' WIDE HORIZONTAL SETBACK WILL BE MAINTAINED FROM DISTURBANCE BY WHEELS OR TRACKS ON EQUIPMENT, AND A TWO FOOT TO FOUR FOOT VERTICAL SETBACK WILL BE MAINTAINED TO MAINTAIN LOW-FLOW CHANNEL GEOMORPHOLOGY.
- ③ DISTANCE FROM BANK TO EDGE OF SHALLOW ALCOVE EXTRACTION AREA IS A MINIMUM OF 15'.
- ④ 30%-35% OF UPSTREAM END OF BAR WILL HAVE NO DISTURBANCE.



LOW FLOW EDGE OF WETTED CHANNEL

20' HORIZONTAL OFFSET FROM LOW FLOW CHANNEL AND 15' HORIZONTAL OFFSET FROM TOE OF BANK

422 PROPOSED CONTOUR LINE 2' INTERVALS

EXISTING CONTOUR LINE 2' INTERVALS

SHALLOW ALCOVE BOUNDARY

FG FINISH GRADE

EL ELEVATION

RAU AND ASSOCIATES INC.
 CIVIL ENGINEERS · LAND SURVEYORS
 100 NORTH PINE STREET · (707) 462-6536 · UKIAH, CA 95482

DRAWING:	PUBLIC NOTICE MAP
	FILE NO. 2014-00193N
PROJECT:	ROWLAND BAR GRAVEL EXTRACTION

Date:	MAY 2014
Scale:	AS SHOWN
Drawn:	JCJ
Checked:	GCR
Reviewed:	GCR
JOB NO.	R11038

SHEET 3
 of
3