



Figure 1. SFOBB East Span Seismic Safety Project map

Public Notice Number: SPN-1997-230130

California Department of Transportation

SFOBB Project: Pier E3 Demonstration Project

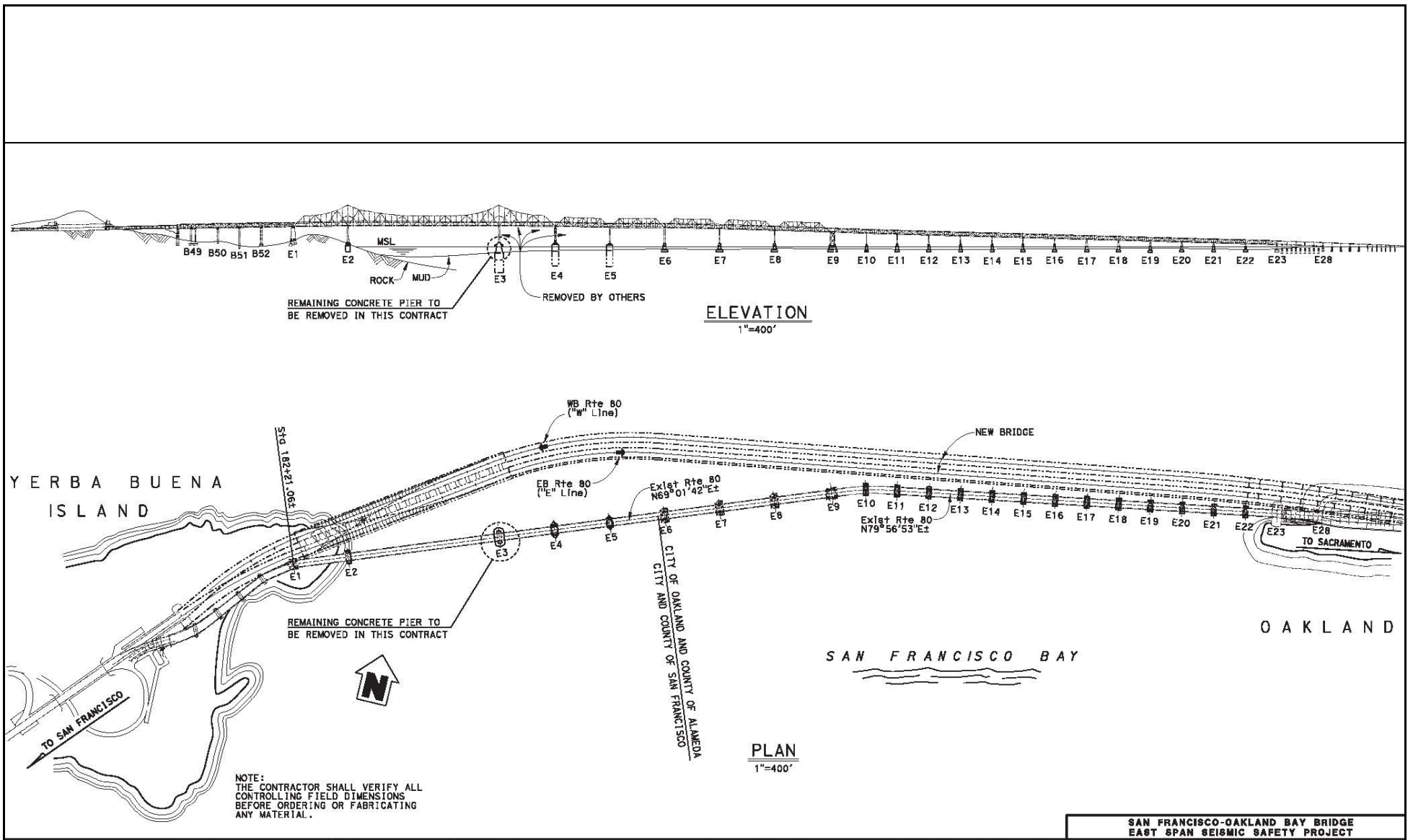


Figure 2. Schematic of the east span of the SFOBB showing the cantilever truss span and the location of Pier E3 (circled) relative to other piers on the bridge.

Public Notice Number: SPN-1997-230130
 California Department of Transportation
 SFOBB Project: Pier E3 Demonstration Project

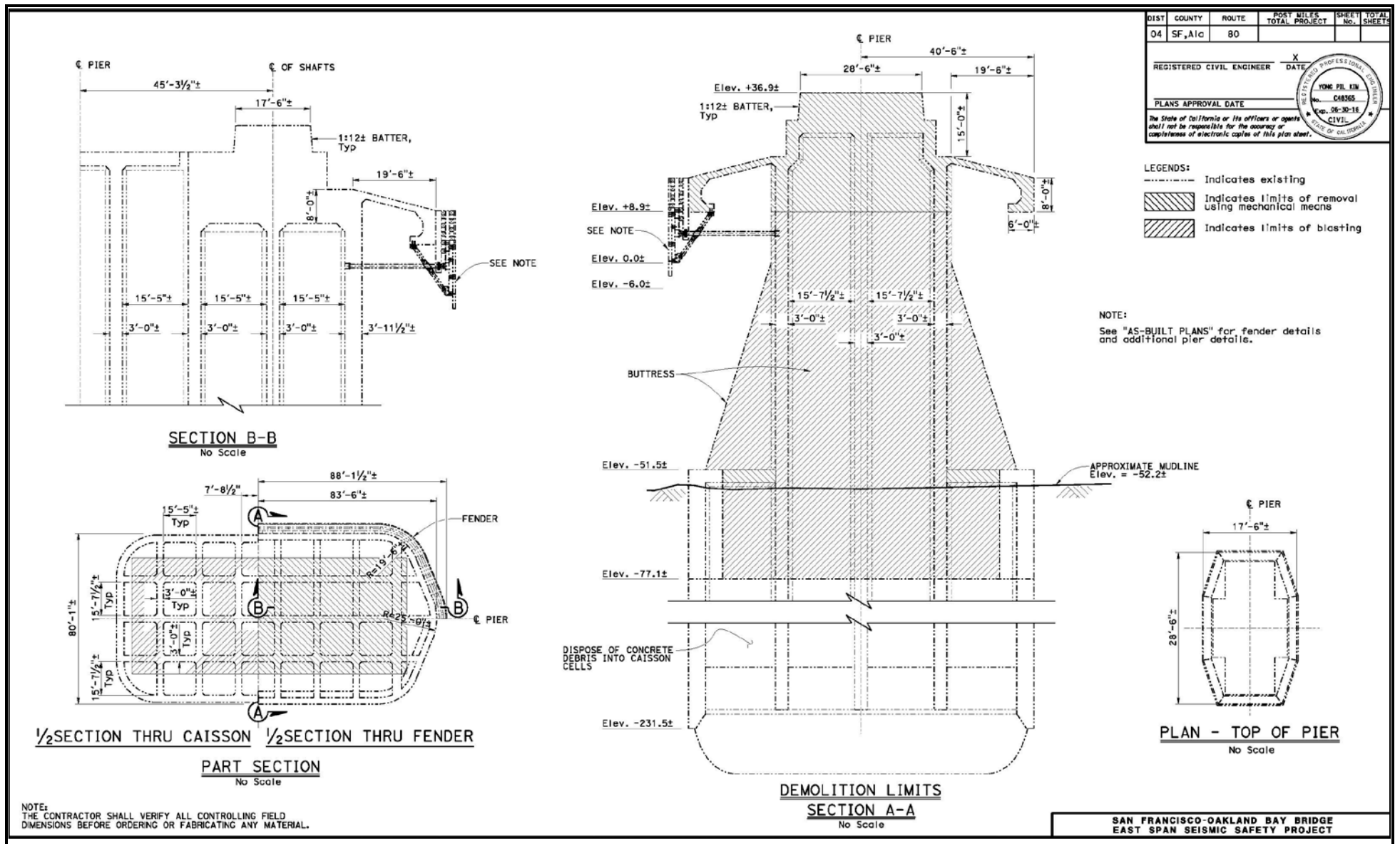


Figure 3. Draft plan sheets of Pier E3 caisson showing elevations, dimensions and limits of removal.

Public Notice Number: SPN-1997-230130
 California Department of Transportation
 SFOBB Project: Pier E3 Demonstration Project

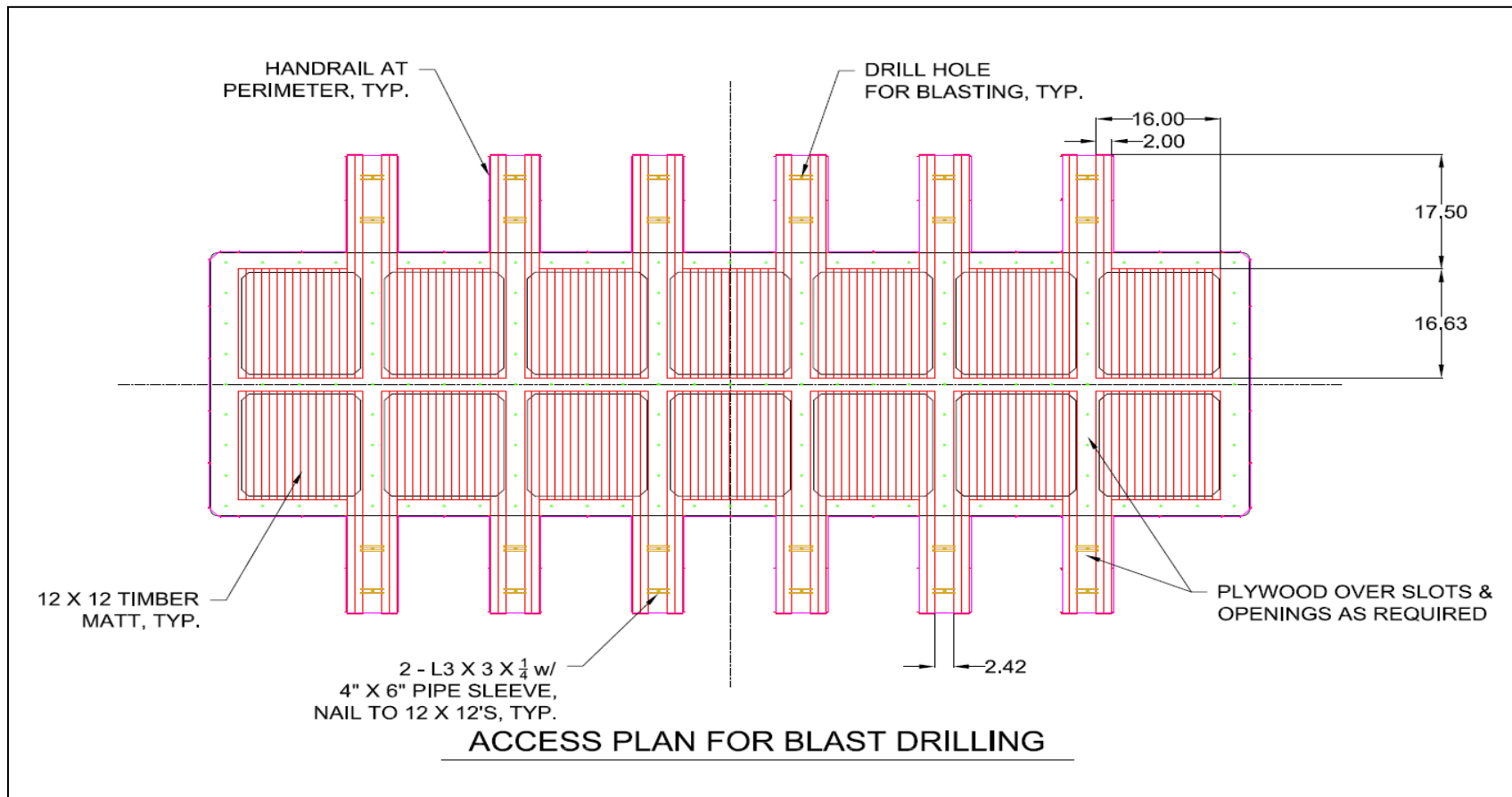


Figure 4. Pier E3 drilling template schematic. Plan view shows installed platforms over all inner cells to support drilling equipment and installed overhang template system to facilitate drilling activities below the waterline.

Public Notice Number: SPN-1997-230130
 California Department of Transportation
 SFOBB Project: Pier E3 Demonstration Project

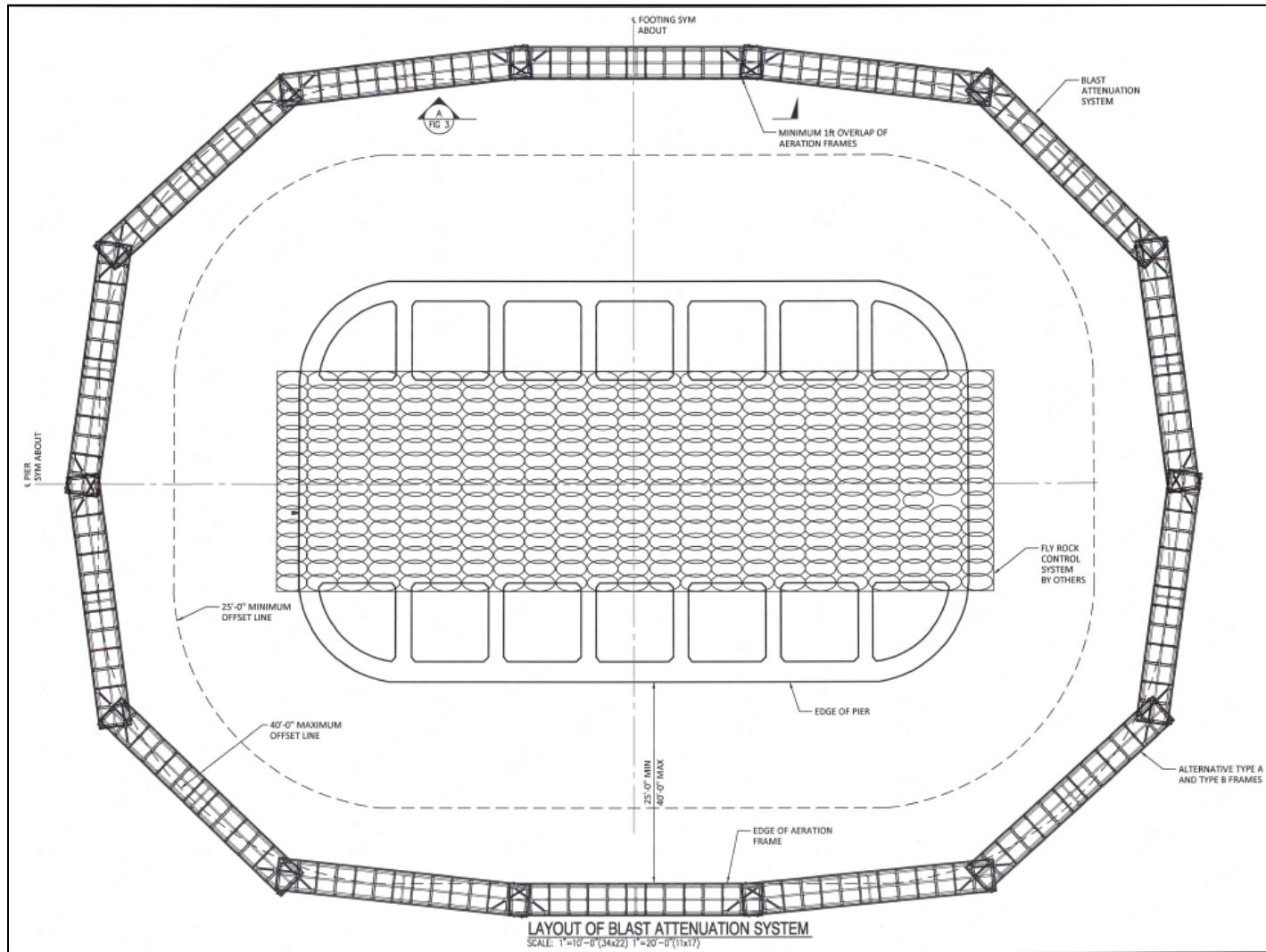


Figure 5. Figure shows BAS layout.

Public Notice Number: SPN-1997-230130

California Department of Transportation

SFOBB Project: Pier E3 Demonstration Project

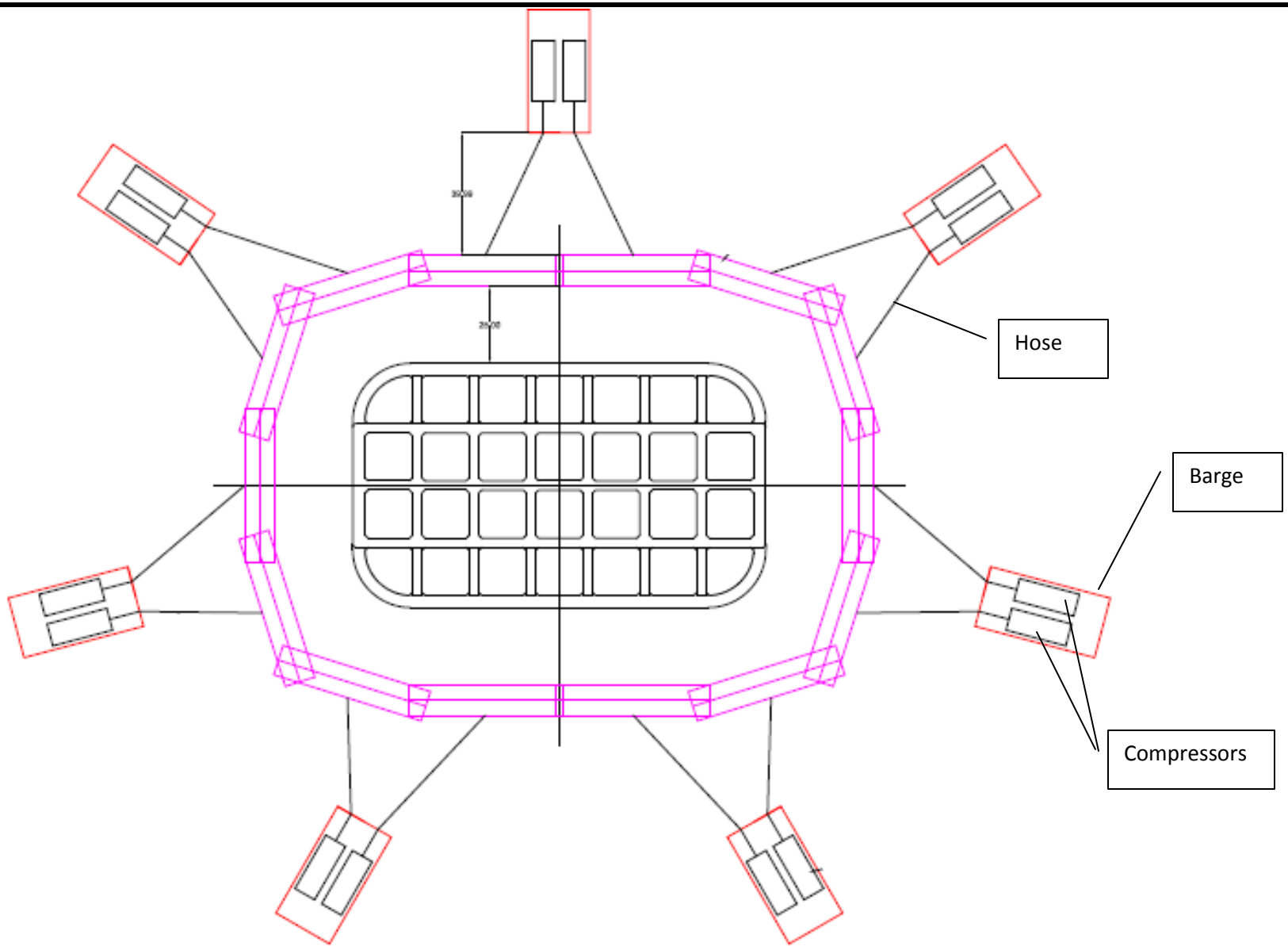


Figure 6. Schematic showing air compressors on barges with hose connections to each BAS frame.

Public Notice Number: SPN-1997-230130
 California Department of Transportation
 SFOBB Project: Pier E3 Demonstration Project