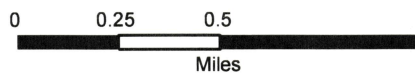




Figure 1. Project Area Location Map

LAT: 37.616260° LONG: -122.093790°



Hayward Eden Shores Industrial
Park Project
Alameda County, California



ENVIRONMENTAL CONSULTANTS

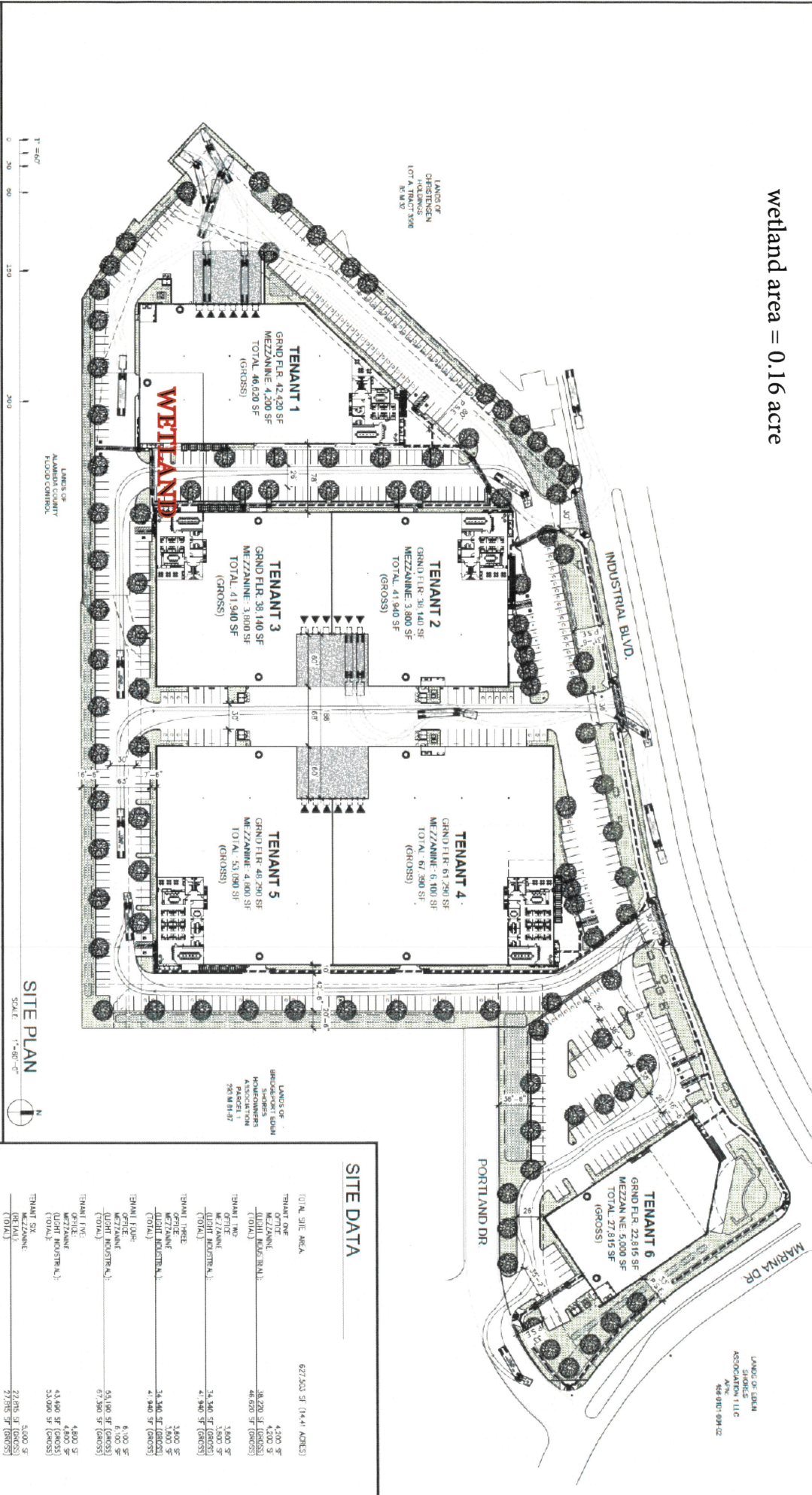
SPN-2008-00409

Map Date: April 2015 SHEET 1 OF 2

Map By: DC/SRA

Base Source: ESRI/National Geographic

wetland area = 0.16 acre



SITE LEGEND

- 1 POLE MOUNTED LIGHT FIXTURE
- 2 WALL MOUNT LIGHT FIXTURE, SEE ELECTRICAL DRAWINGS
- 3 BENCH BACK PER CITY STANDARDS
- 4 TRANSFORMER WITH CONCRETE PAD, SEE ELECTRICAL DRAWINGS FOR LOCATION AND SPECIFICATIONS PER LOCAL UTILITY OR PUBLIC WORK STANDARDS
- 5 TRASH ENCLOSURE PER CITY STANDARDS
- 6 DOOR - HIGH BACK DOOR
- 7 DOOR - ELEC. TRASH DOOR
- 8 ACCESSIBLE RAMP PER ADA
- 9 FIRE HYDRANT (VERIFY LOCATION WITH CIVIL DRAWINGS)
- 10 6" x 6" MAN HOLE, SEE FIRE PROTECTION DRAWINGS
- 11 COMPACT PARKING STALL PER CITY STANDARDS
- 12 REFERENCE PARKING PER CITY REQUIREMENTS
- 13 ACCESSIBLE PARKING STALL WITH SPACE
- 14 7'-6" PARKING DESIGN
- 15 UNPAVED PARKING STRIPING PER CITY STANDARDS

SITE PLAN NOTES

- 1 FIRE LINE (HATCHED)
- 2 LANDSCAPE AND VEGETATION AREA (SEE LANDSCAPE DRAWINGS)
- 3 TREATMENT PLANTER (SEE CIVIL)
- 4 PROPERTY LINE (SEE CIVIL)
- 5 THE LINE SHOWN DASHED LINE INDICATES EXISTING OR CONTIGUOUS AREAS TO BE PAVED PER 1.120 AND 1.125 AND 1.126 AND 1.129 (SEE CIVIL DRAWINGS)
- 6 ACCESSIBLE ENTRY SPACE
- 7 PARALLEL ENTRY SPACE
- 8 PAVEMENT SQUARE
- 9 POWERED IN PLACE CONCRETE MOUNTING SIGN WITH GROUND MOUNTED ILLUMINATION
- 10 ACCESSIBLE PARKING (8 3.5%)
- 11 138 STALLS
- 12 131 STALLS (8 3.5%)
- 13 30 STALLS
- 14 255 STALLS
- 15 568 STALLS

SITE DATA

TENANT	TOTAL SITE AREA	627,202 SF (14.4 ACRES)
TENANT ONE	4,200 SF	
MEZZANINE	4,200 SF	
TOTAL	8,400 SF (GROSS)	
TENANT TWO	31,270 SF (GROSS)	
MEZZANINE	46,670 SF (GROSS)	
TOTAL	77,940 SF (GROSS)	
TENANT THREE	3,000 SF	
MEZZANINE	3,000 SF	
TOTAL	6,000 SF (GROSS)	
TENANT FOUR	3,340 SF (GROSS)	
MEZZANINE	4,740 SF (GROSS)	
TOTAL	8,080 SF (GROSS)	
TENANT FIVE	4,800 SF	
MEZZANINE	43,600 SF (GROSS)	
TOTAL	48,400 SF (GROSS)	
TENANT SIX	5,000 SF	
MEZZANINE	27,215 SF (GROSS)	
TOTAL	32,215 SF (GROSS)	
TOTAL GROUND FLOOR AREA:	281,006 SF (GROSS)	
TOTAL MEZZANINE AREA:	217,000 SF (GROSS)	
TOTAL BUILDING AREA:	498,006 SF (GROSS)	
(NOT COVERED)	40,016 SF (GROSS)	
(F.A.S.)	44 (GROSS)	