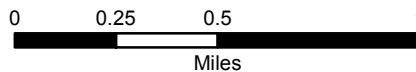


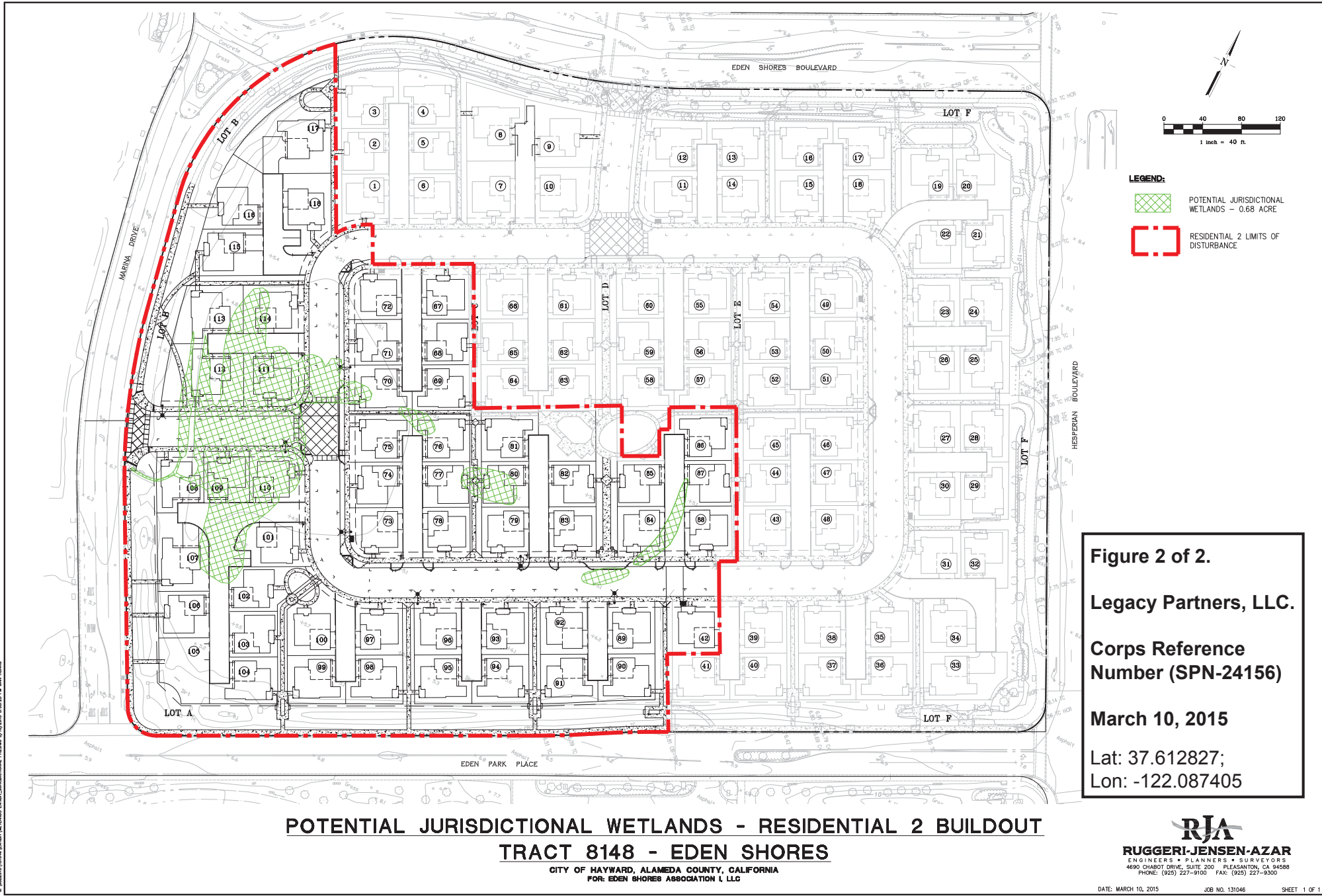


Figure 1 of 2. Project Area Location Map  
Corps reference number (SPN-24156)

Legacy Partners LLC Eden Shores  
Residential 2  
Alameda County, California  
Lat: 37.612827; Lon: -122.087405



Map Prepared Date: 10/20/2015  
Map Prepared By: SGillespie  
Base Source: ESRI National Geographic  
Data Source(s): WRA



**Figure 2 of 2.**  
**Legacy Partners, LLC.**  
**Corps Reference**  
**Number (SPN-24156)**  
**March 10, 2015**  
 Lat: 37.612827;  
 Lon: -122.087405

**POTENTIAL JURISDICTIONAL WETLANDS - RESIDENTIAL 2 BUILDOUT**  
**TRACT 8148 - EDEN SHORES**  
 CITY OF HAYWARD, ALAMEDA COUNTY, CALIFORNIA  
 FOR: EDEN SHORES ASSOCIATION I, LLC

**RJA**  
**RUGGERI-JENSEN-AZAR**  
 ENGINEERS • PLANNERS • SURVEYORS  
 4690 CHABOT DRIVE, SUITE 200 PLEASANTON, CA 94588  
 PHONE: (925) 227-9100 FAX: (925) 227-9300

© 2015 RUGGERI-JENSEN-AZAR ENGINEERS, PLANNERS & SURVEYORS. ALL RIGHTS RESERVED. DATE: 3/10/2015 3:03:27 PM. JAW: HAWARD