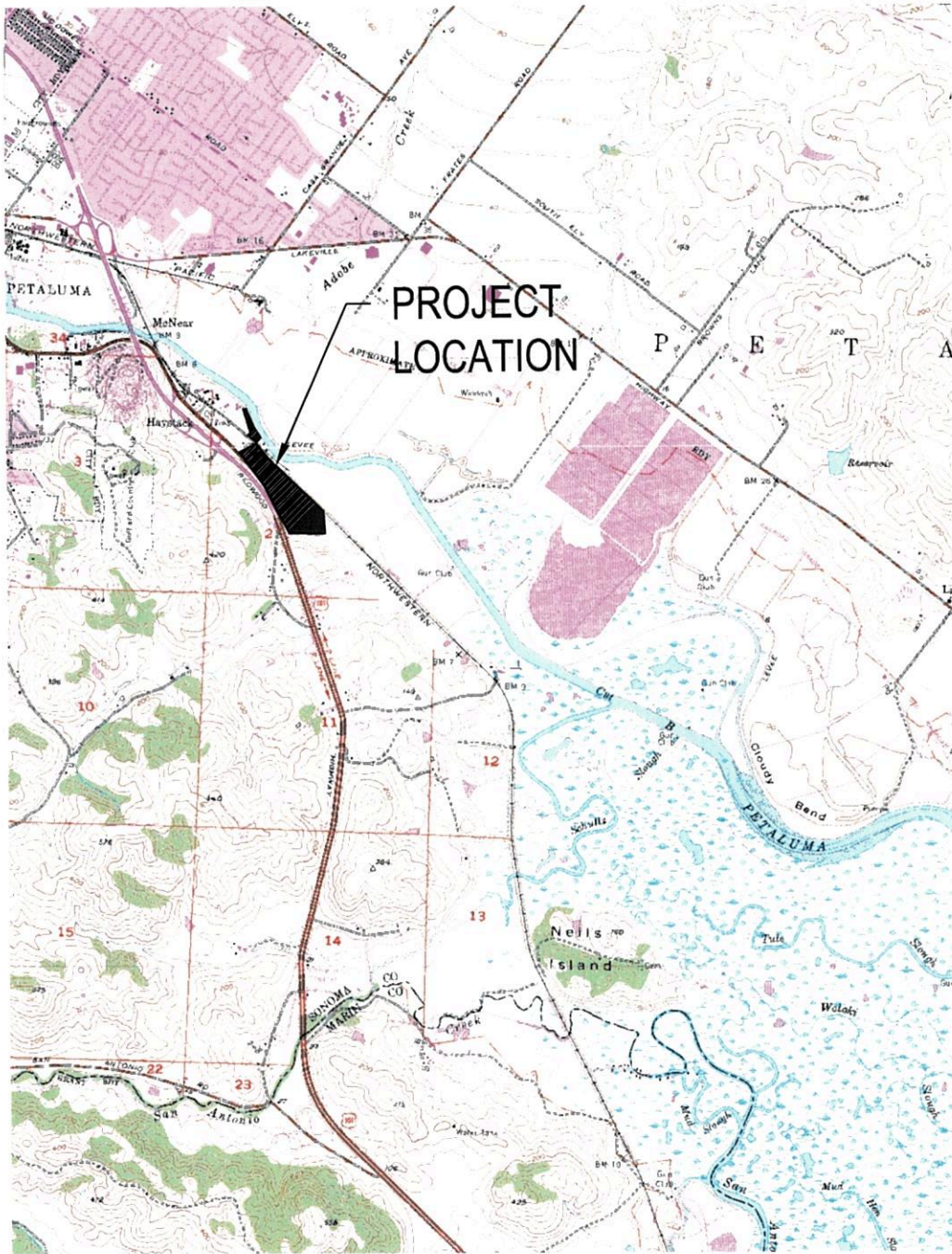
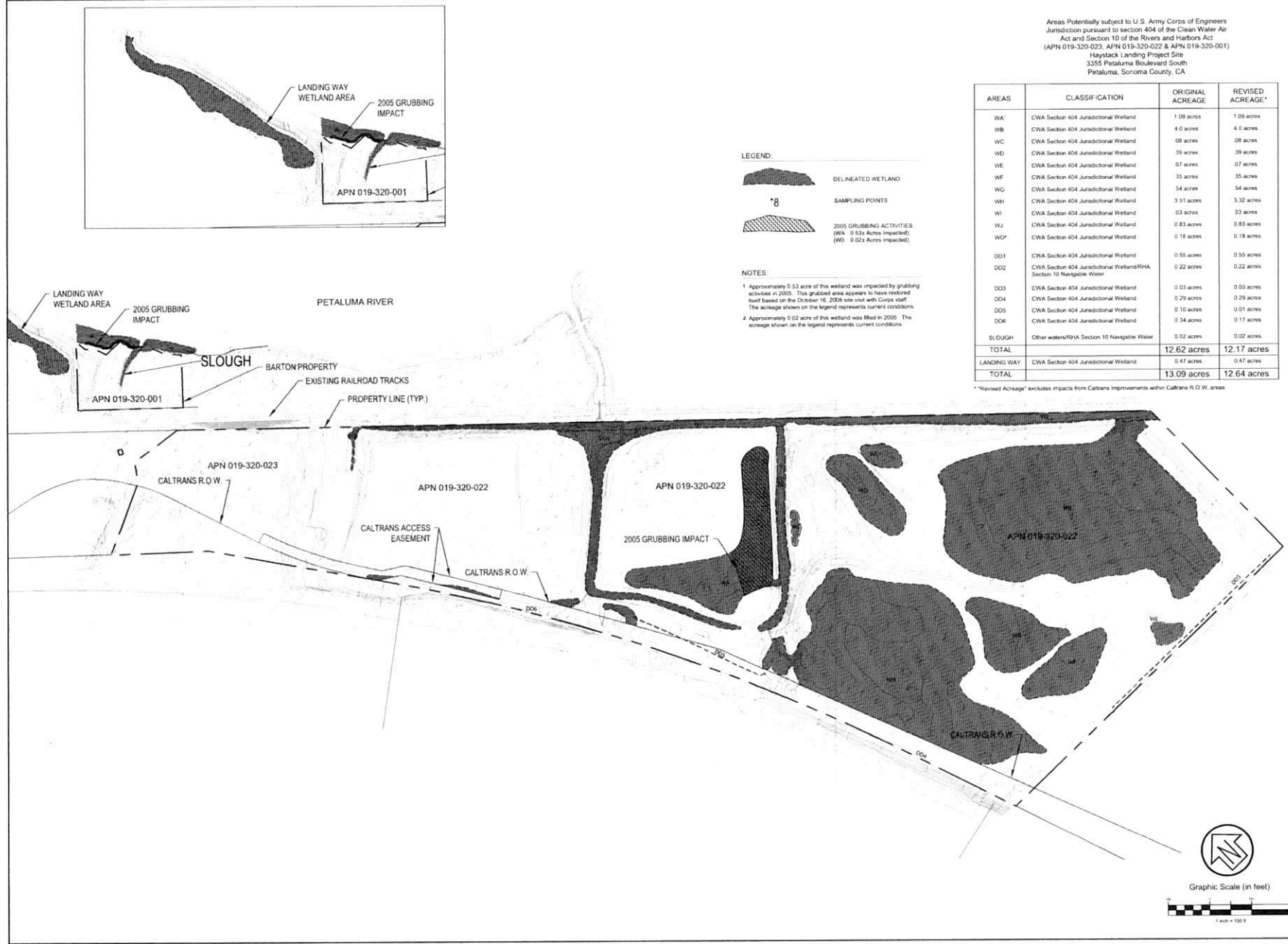


Figure 1



<p><b>CSW   ST2</b></p> <p>CSW/Stuber-Stroeh Engineering Group, Inc.          Civil &amp; Structural Engineers   Surveying &amp; Mapping   Environmental Planning          Land Planning   Construction Management   Landscape Architecture</p> <p>45 Leveroni Court                      tel: 415.883.9850          Novato, CA 94949                      fax: 415.883.9835</p> <p style="text-align: center;">© 2008</p>	<p>Rev. 2015-08-25</p>	<p>Date: 04-14-11</p>
	<p>Job No. 591302</p>	<p>Scale: nts</p>
	<p><b>DUTRA HAYSTACK ASPHALT FACILITY          USGS MAP          OVERALL SITE PLAN</b></p>	
<p>SONOMA</p>	<p>FIGURE 1</p>	<p>CALIFORNIA</p>



Areas Potentially subject to U.S. Army Corps of Engineers Jurisdiction pursuant to section 404 of the Clean Water Act and Section 10 of the Rivers and Harbors Act (APN 019-320-023, APN 019-320-022 & APN 019-320-001)  
 Haystack Landing Project Site  
 3355 Petaluma Boulevard South  
 Petaluma, Sonoma County, CA

AREAS	CLASSIFICATION	ORIGINAL ACREAGE	REVISED ACREAGE <sup>1</sup>
WA	CWA Section 404 Jurisdictional Wetland	1.09 acres	1.09 acres
WB	CWA Section 404 Jurisdictional Wetland	4.0 acres	4.0 acres
WC	CWA Section 404 Jurisdictional Wetland	08 acres	08 acres
WD	CWA Section 404 Jurisdictional Wetland	39 acres	39 acres
WE	CWA Section 404 Jurisdictional Wetland	07 acres	07 acres
WF	CWA Section 404 Jurisdictional Wetland	35 acres	35 acres
WG	CWA Section 404 Jurisdictional Wetland	54 acres	54 acres
WH	CWA Section 404 Jurisdictional Wetland	3.51 acres	3.32 acres
WI	CWA Section 404 Jurisdictional Wetland	03 acres	03 acres
WJ	CWA Section 404 Jurisdictional Wetland	0.83 acres	0.83 acres
WO*	CWA Section 404 Jurisdictional Wetland	0.18 acres	0.18 acres
DO1	CWA Section 404 Jurisdictional Wetland	0.55 acres	0.55 acres
DO2	CWA Section 404 Jurisdictional Wetland/RHA Section 10 Navigable Water	0.22 acres	0.22 acres
DO3	CWA Section 404 Jurisdictional Wetland	0.03 acres	0.03 acres
DO4	CWA Section 404 Jurisdictional Wetland	0.29 acres	0.29 acres
DO5	CWA Section 404 Jurisdictional Wetland	0.10 acres	0.01 acres
DO6	CWA Section 404 Jurisdictional Wetland	0.34 acres	0.17 acres
SLOUGH	Other waters/RHA Section 10 Navigable Water	0.02 acres	0.02 acres
<b>TOTAL</b>		<b>12.62 acres</b>	<b>12.17 acres</b>
LANDING WAY	CWA Section 404 Jurisdictional Wetland	0.47 acres	0.47 acres
<b>TOTAL</b>		<b>13.09 acres</b>	<b>12.64 acres</b>

\*Revised Acreage\* excludes impacts from Caltrans Improvements within Caltrans R.O.W. areas

**CSW ST 2**

CSW/Stuber-Stroeh Engineering Group, Inc.  
 45 Leveque Court  
 Novato, CA 94949  
 tel. 415.883.9850  
 fax. 415.883.9855

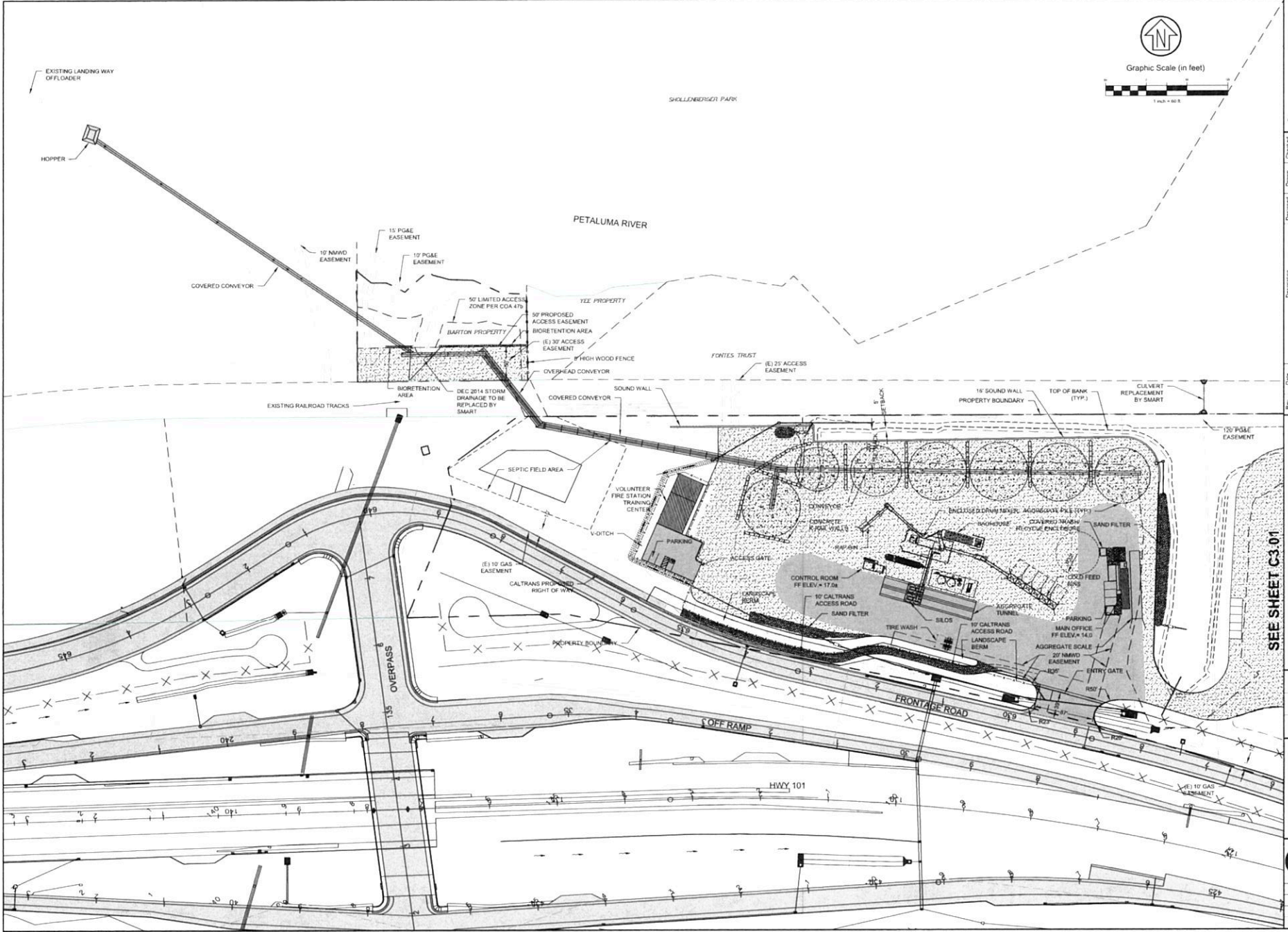
Rev.	Date	Description	Designed	Drawn	Checked	ACG	ACG	REV	REV	REV	REV
-	04-29-08	CALTRANS IMPACTS REMOVED									
-	10-23-08	WETLAND DELINEATION MAP									

DUTRA HAYSTACK LANDING  
 POTENTIAL JURISDICTIONAL WETLANDS  
 DUTRA GROUP

City Of  
 County Of Sonoma  
 State Of California

Prepared Under the Direction of  
 Sheet **EXH9**  
 Scale 1" = 100'  
 Date 10-23-08  
 File 591302 C3D  
 Plan File 0-4862





CSW ST 2

CSW/Utcher-Stroh  
Engineering Group, Inc.  
44 Leavenworth Court #2  
Hayward, CA 94542  
Tel: (415) 885-8800  
Fax: (415) 885-8801

Civil & Structural Engineers  
Surveying & Mapping  
Environmental Planning  
Land Planning  
Construction Management


Rev.	Date	Description	Designed	Drawn	Checked

SEE SHEET C3.01

DUTRA HAYSTACK LANDING ASPHALT FACILITY  
SITE LAYOUT-  
ASPHALT PLANT  
DUTRA GROUP

City Of  
County Of  
Sonoma  
State Of  
California

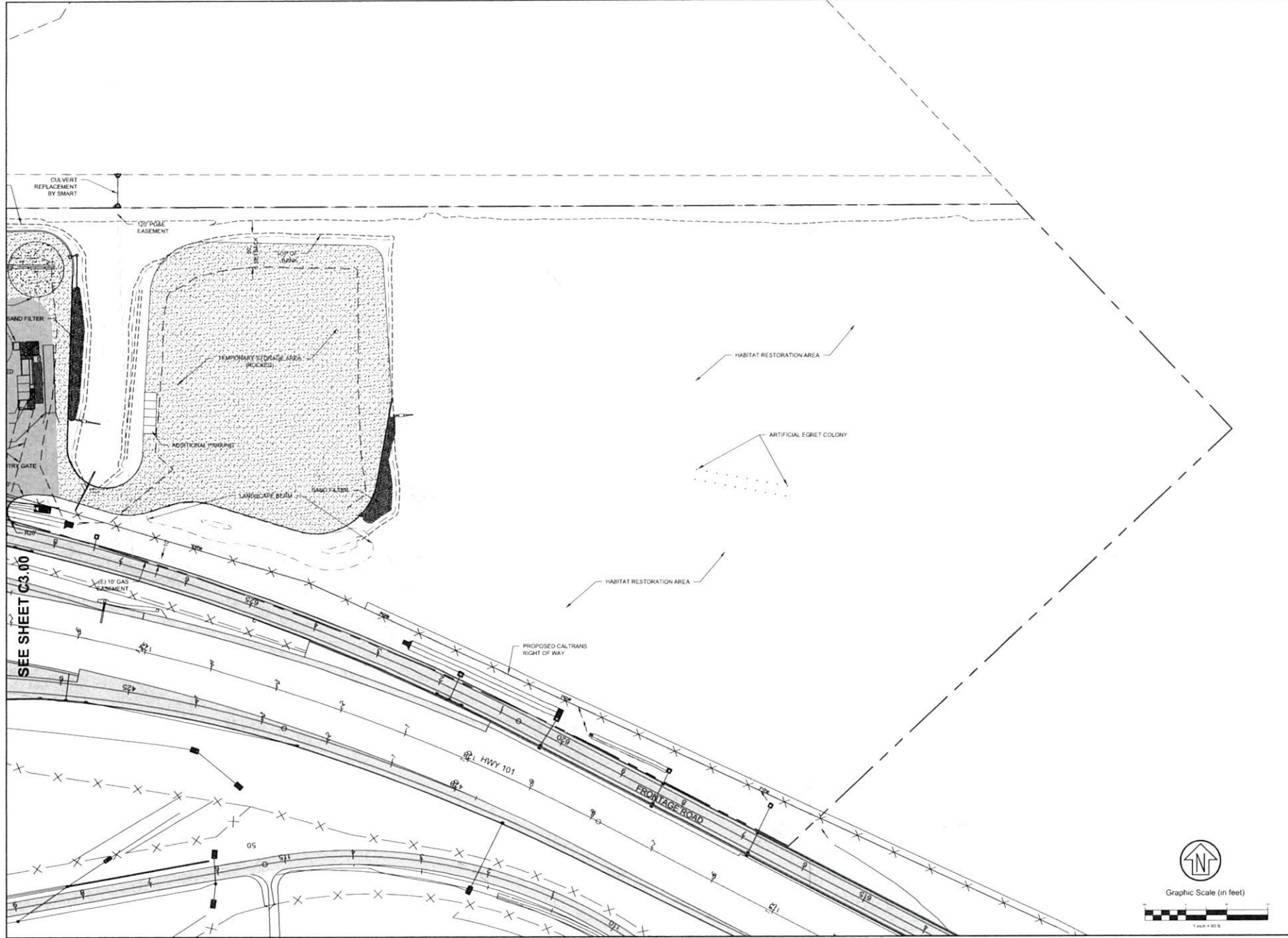
Prepared Under the Direction of



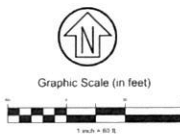
Sheet  
**C3.00**

Scale: 1" = 60'  
Date: 04/03/2015  
Project Number: 553515  
Plan File: D-5159

Figure 3



SEE SHEET C3.00



**CSW ST 2**  
 CSW/Strickland  
 Engineering Group, Inc.  
 40 Lowell Court #2 915.883.8888  
 Menlo Park, CA 94025 #1 415.321.6188

Chief & Licensed Engineers  
 Surveying & Mapping  
 Environmental Planning  
 Land Planning  
 Construction Management

Rev.	Date	Description	Designed	Drawn	Checked

104032015 COUNTY OF SONOMA PERMIT SUBMITTAL #1 REVISIONS

**DUTRA HAYSTACK LANDING ASPHALT FACILITY**  
**SITE LAYOUT-**  
**ASPHALT PLANT**  
**DUTRA GROUP**

City Of \_\_\_\_\_  
 County Of **Sonoma**  
 State Of **California**

Prepared Under the Direction of

Sheet **C3.01**

Scale: 1" = 60'  
 Date: 04/03/2015  
 Project Number: 553515  
 Plan File: D-5159





MIT ALT 11A 2014-09-22

CREATED WETLAND HABITAT

ACRES	SYMBOL	DESCRIPTION
2.66		CREATED SEASONALLY INUNDATED WETLAND
2.66		TOTAL CREATED WETLAND HABITAT

ENHANCED WETLAND HABITAT

8.27		ENHANCED EX. SEASONALLY INUNDATED WETLAND
8.27		TOTAL ENHANCED WETLANDS

BRACKISH MARSH ENHANCED WITH PLANTINGS (WO2)

0.16		EX. BRACKISH MARSH WETLAND - ENHANCED (BARTON PROPERTY)
.016		TOTAL PLANTING ENHANCEMENT

RESTORED COASTAL BRACKISH MARSH HABITAT (WO2)

0.02		EX. SEASONAL WETLAND-RESTORED (BARTON PROPERTY)
.02		TOTAL RESTORED WETLANDS

10.95 TOTAL CREATED, RESTORED, & ENHANCED WETLAND HABITAT

3.29		PROPOSED UPLAND ENHANCEMENT/ BUFFER ZONE (INCLUDING LANDING WAY)
		LIMITS OF CORPS JURISDICTIONAL WETLANDS.
0.90		PRESERVED EXISTING WETLANDS
17.0		MITIGATION BOUNDARY (AFTER CALTRANS IMPROVEMENTS, 19.0 ACRES PRIOR TO IMPROVEMENTS)

MITIGATION AREA

WETLAND	EX. ACRES	ENHANCED ACRES
WB	4.00	4.0
WC	0.08	0
WD	0.39	0
WF	0.35	0.35
WG	0.54	0.54
WH	3.51	3.38
<b>TOTAL</b>	<b>8.87</b>	<b>8.27</b>
WO2	0.18	0
<b>TOTAL</b>	<b>9.05</b>	<b>8.27</b>

Rev	Date	Description	Checked

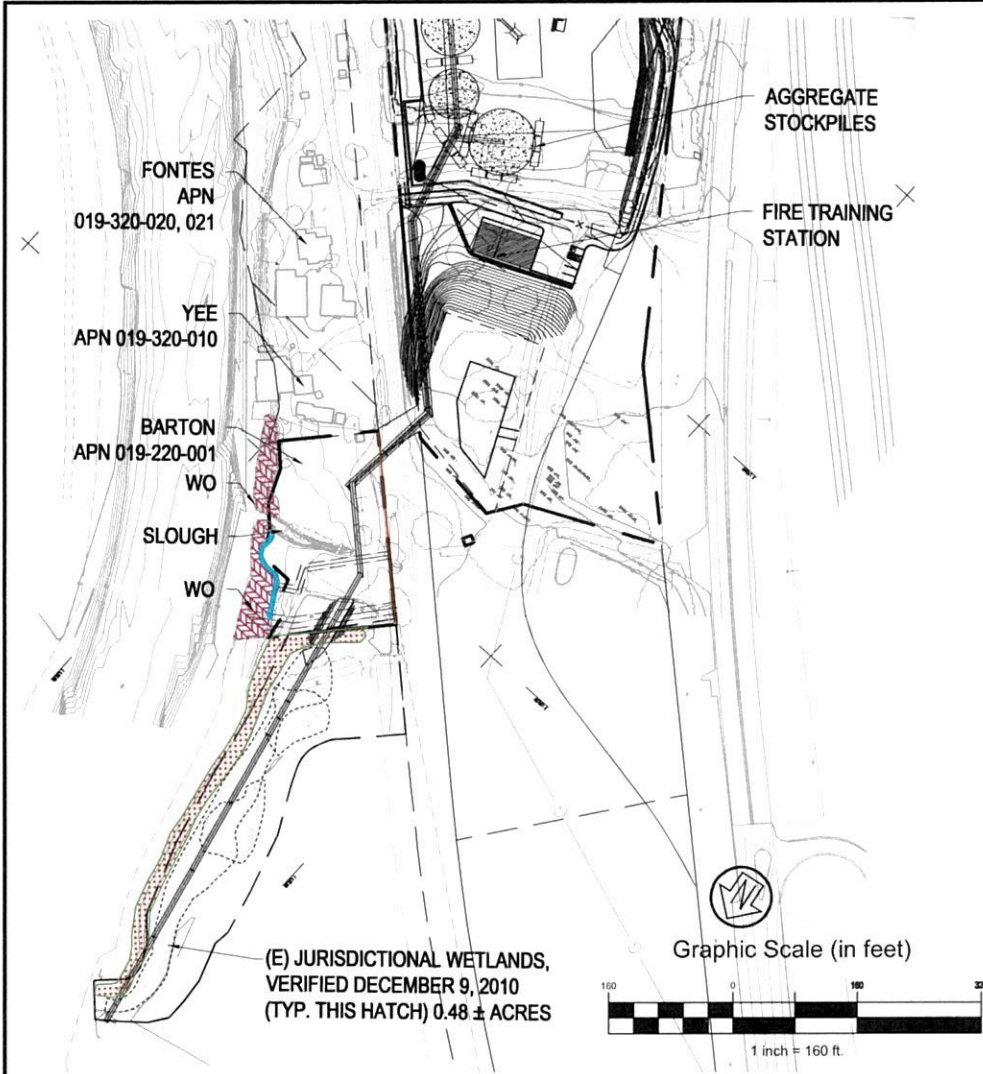
**CSW ST 2**

CSW/Stuber-Stroeh Engineering Group, Inc.  
 Civil & Structural Engineers | Surveying & Mapping | Environmental Planning  
 Land Planning | Construction Management | Landscape Architecture  
 45 Leveroni Court tel: 415.883.9850  
 Novato, CA 94949 fax: 415.883.9835  
 © 2008

Prepared Under the Direction of:

Job No. 591302	Date: 04/13/2011
Revision: 11/11/2014	Scale: 1"=160'
DUTRA HAYSTACK ASPHALT FACILITY WETLANDS MITIGATION PLAN DESIGN PLATE 2	
SONOMA	CALIFORNIA

Figure 5



MIT ALT 11A 2014-09-22

CREATED WETLAND HABITAT

ACRES	SYMBOL	DESCRIPTION
2.66		CREATED SEASONALLY INUNDATED WETLAND
2.66		TOTAL CREATED WETLAND HABITAT

ENHANCED WETLAND HABITAT

ACRES	SYMBOL	DESCRIPTION
8.27		ENHANCED EX. SEASONALLY INUNDATED WETLAND
8.27		TOTAL ENHANCED WETLANDS

BRACKISH MARSH ENHANCED WITH PLANTINGS (WO2)

ACRES	SYMBOL	DESCRIPTION
0.16		EX. BRACKISH MARSH WETLAND - ENHANCED (BARTON PROPERTY)
.016		TOTAL PLANTING ENHANCEMENT

RESTORED COASTAL BRACKISH MARSH HABITAT (WO2)

ACRES	SYMBOL	DESCRIPTION
0.02		EX. SEASONAL WETLAND-RESTORED (BARTON PROPERTY)
.02		TOTAL RESTORED WETLANDS

10.95 TOTAL CREATED, RESTORED, & ENHANCED WETLAND HABITAT

3.29		PROPOSED UPLAND ENHANCEMENT/ BUFFER ZONE (INCLUDING LANDING WAY)
		LIMITS OF CORPS JURISDICTIONAL WETLANDS.
0.90		PRESERVED EXISTING WETLANDS
17.0		MITIGATION BOUNDARY (AFTER CALTRANS IMPROVEMENTS, 19.0 ACRES PRIOR TO IMPROVEMENTS)

MITIGATION AREA

WETLAND	EX. ACRES	ENHANCED ACRES
WB	4.00	4.0
WC	0.08	0
WD	0.39	0
WF	0.35	0.35
WG	0.54	0.54
WH	3.51	3.38
<b>TOTAL</b>	<b>8.87</b>	<b>8.27</b>
WO2	0.18	0
<b>TOTAL</b>	<b>9.05</b>	<b>8.27</b>

Rev	Date	Description	Checked

**CSW ST2**

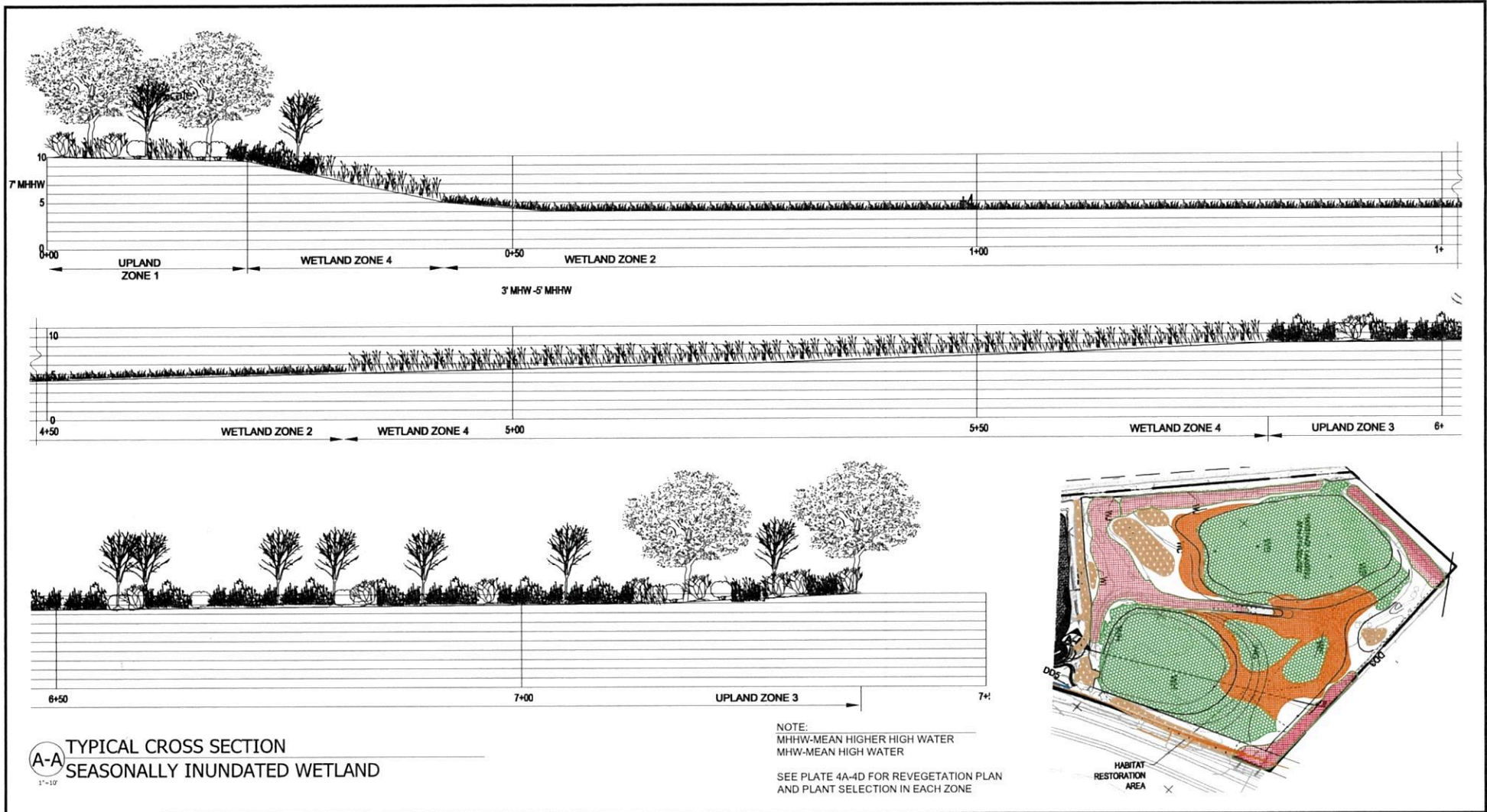
CSW/Stuber-Stroeh Engineering Group, Inc.  
 Civil & Structural Engineers | Surveying & Mapping | Environmental Planning  
 Land Planning | Construction Management | Landscape Architecture  
 45 Leveroni Court tel: 415.883.9850  
 Novato, CA 94949 fax: 415.883.9835  
 © 2008

Prepared Under the Direction of:

Job No. 591302	Date: 04/13/2011
Revision: 11/11/2014	Scale: 1"=160'
<b>DUTRA HAYSTACK ASPHALT FACILITY WETLANDS MITIGATION PLAN DESIGN PLATE 2a</b>	
SONOMA	CALIFORNIA

Figure 6





Rev	Date	Description	Checked	<p><b>CSW ST2</b> CSW/Stuber-Stroeh Engineering Group, Inc. Civil &amp; Structural Engineers   Surveying &amp; Mapping   Environmental Planning Land Planning   Construction Management   Landscape Architecture 45 Leveroni Court      tel: 415.883.9850 Novato, CA 94949      fax: 415.883.9835 © 2008</p>	Prepared Under the Direction of:	Job No. 591302	Date: 04/13/2011
							Revision: 05/15/2015
						<p>DUTRA HAYSTACK ASPHALT FACILITY CROSS SECTION OF MITIGATION AREA PLATE 3</p>	
						SONOMA	CALIFORNIA

P:\05\591302\DWG\_2012\Archive\Submittals\2015-04-24 RWOCB Corps- Resubmittal\RWOCB\2015-05 WMMP Report\PLATE 3 CROSS SECTION OF MITIGATION.dwg, 5/29/2015 - 02:39 PM, spj, 1:1.5814

Figure 7