

N:\M\B\12 GIS\Desktop\DAWE\14\02 Canon Station\Map\mid\CanonStation_Fig1_Vicinity_20150316_10.mxd

Figure 1. Project Location

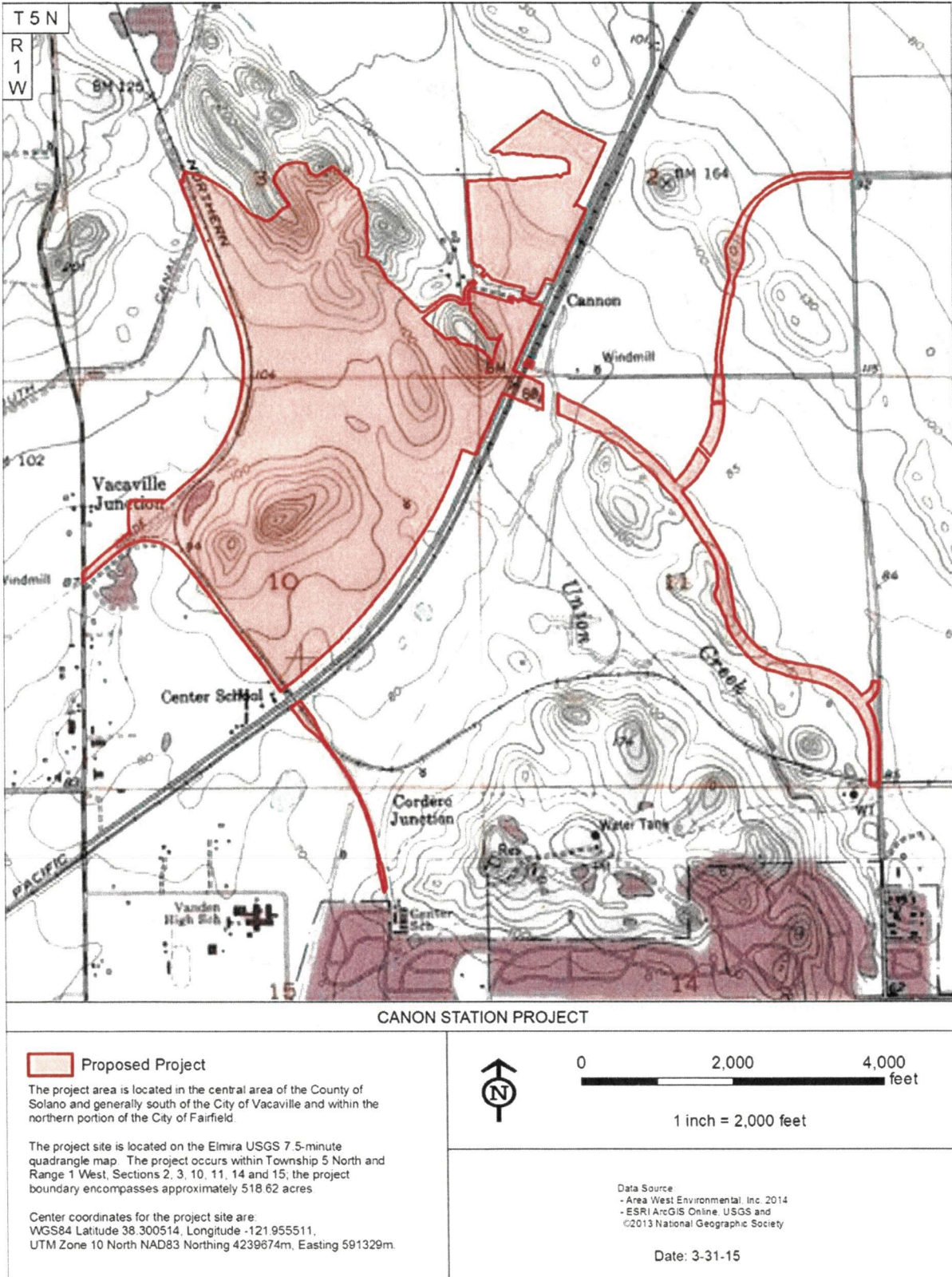


Figure 2. Project Vicinity

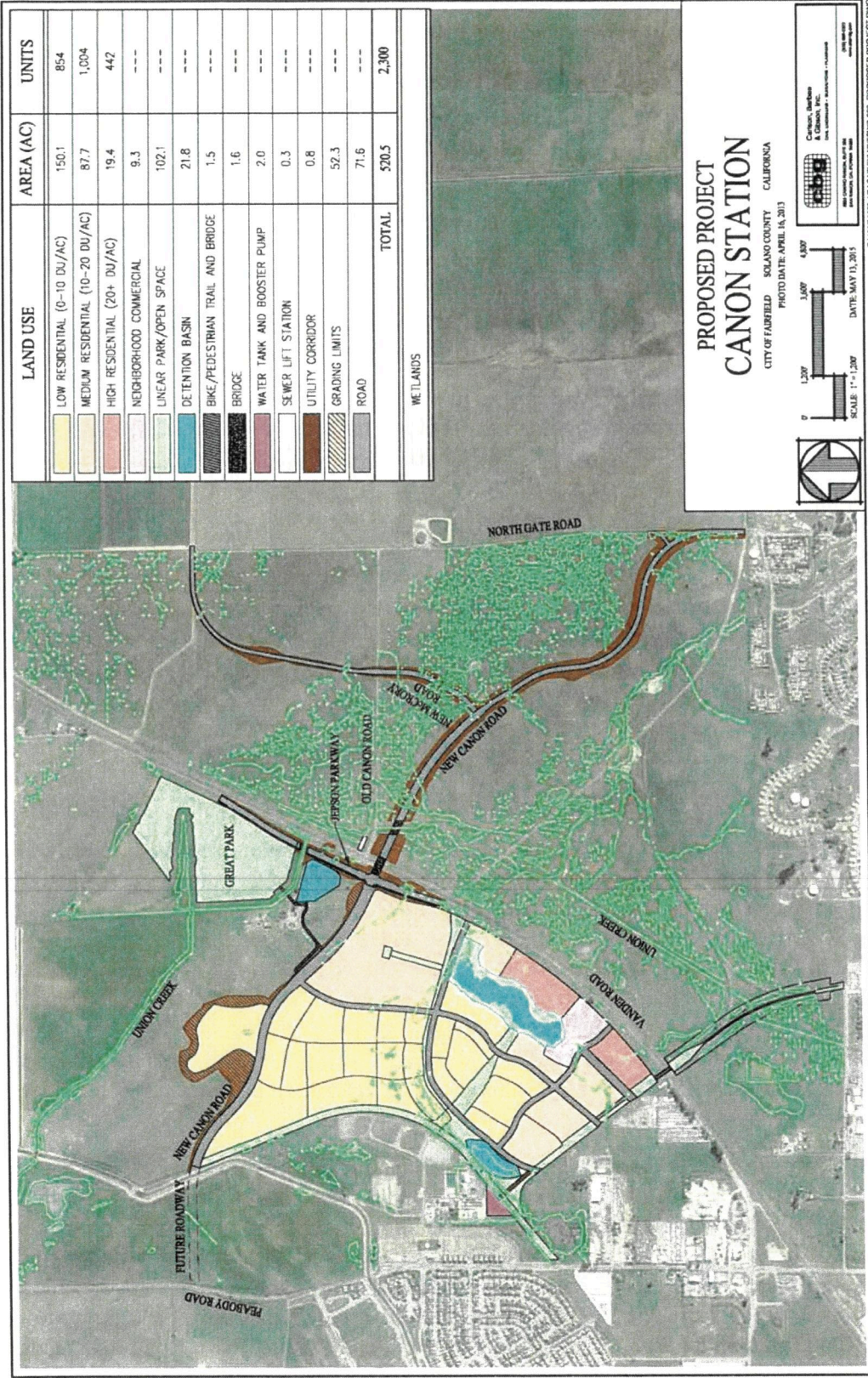


Figure 3. Proposed Project

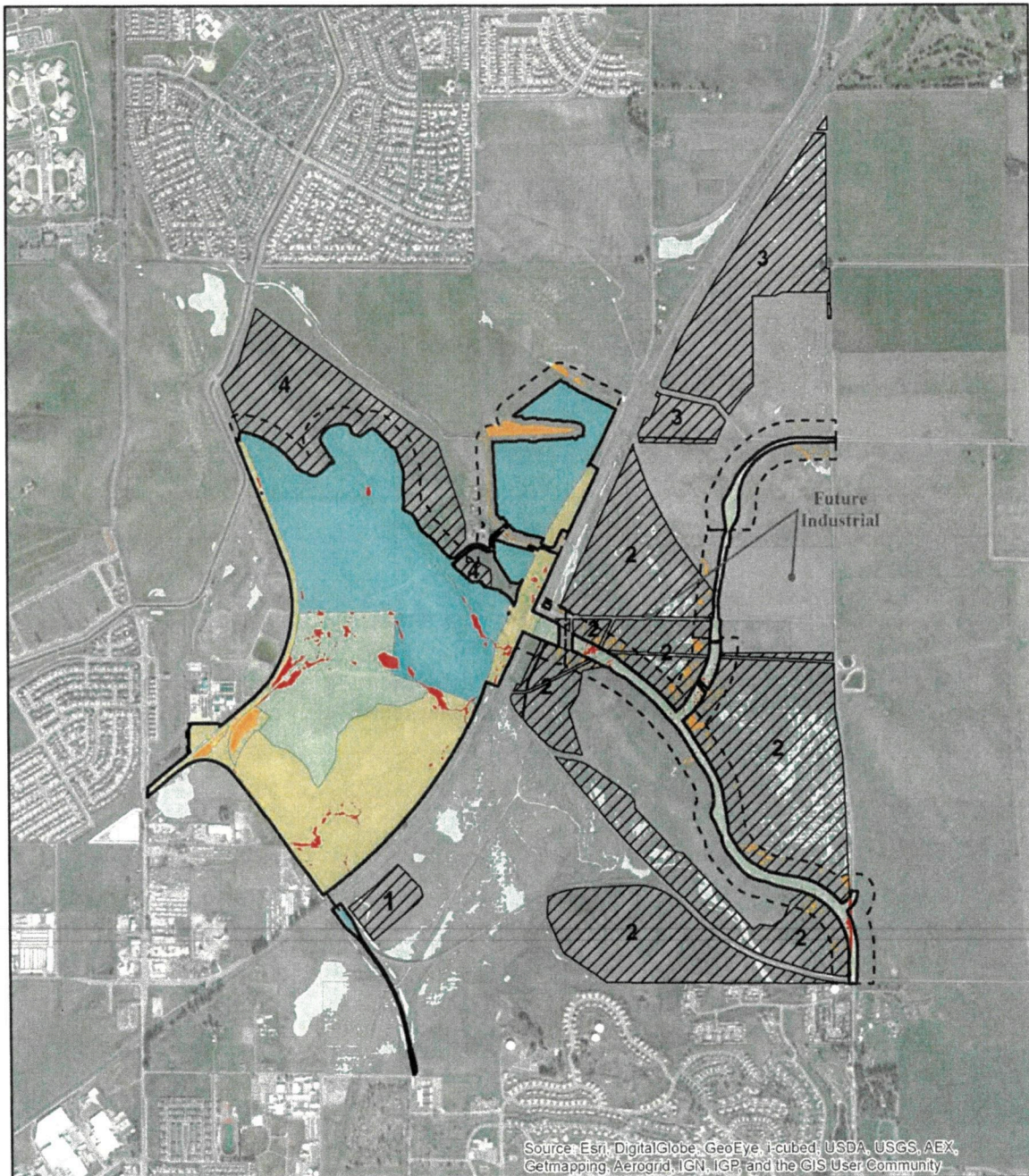


Legend

- ● ● Vanden Road
- ■ ■ Vanden Road between Peabody and E St
- ▨ ▨ ▨ Cement Hill / Peabody Road - Six Lanes
- ▧ ▧ ▧ Cement Hill / Peabody Road - Four Lane
- ▩ ▩ ▩ Industrial Collector - Four Lanes
- ■ ■ New Canon - Four Lanes
- ■ ■ New Canon - Two Lanes
- ■ ■ Connector with Enhanced Median
- ■ ■ Industrial - Two Lanes
- ● ● Thematic Street
- — — Connector
- — — Connector with Multi-Use Trail
- ⋯ ⋯ ⋯ Local Residential
- Signalized Intersection

1. Streets alignments shown on the plan are conceptual. Alignments may be revised based on design refinement at the time of Master PUD Permit development
2. Street cross-sections shown in Figures 10-3 through 10-26 do not depict intersections. Number of lanes at intersections will be based on eIR and subsequent traffic studies.
3. Right-Of-Way includes both City easements and fee title portions

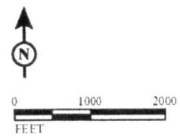
Figure 5. TSSP Planned Roadway Improvements



LSA

LEGEND

- | | | |
|---|-----------------------------|---------------|
| Direct Project Impacts | Direct Impact to Wetland | Grading Phase |
| Indirect Project Impacts (250 feet from direct) | Indirect Impact to Wetland | |
| Mitigation Area | Temporary Impact to Wetland | |
| | Wetland Avoided | Phase 1 |
| | | Phase 2 |
| | | Phase 3 |



SOURCE: Esri World Imagery

I:\CN1401 GIS Maps\MMP Summary\Report\Figure6_Proposed Project and On-site Mitigation Areas.mxd (5/14/2015)

Canon Station
Mitigation and Monitoring Plan
Proposed Project and On-site Mitigation Areas

Figure 6. Mitigation Areas

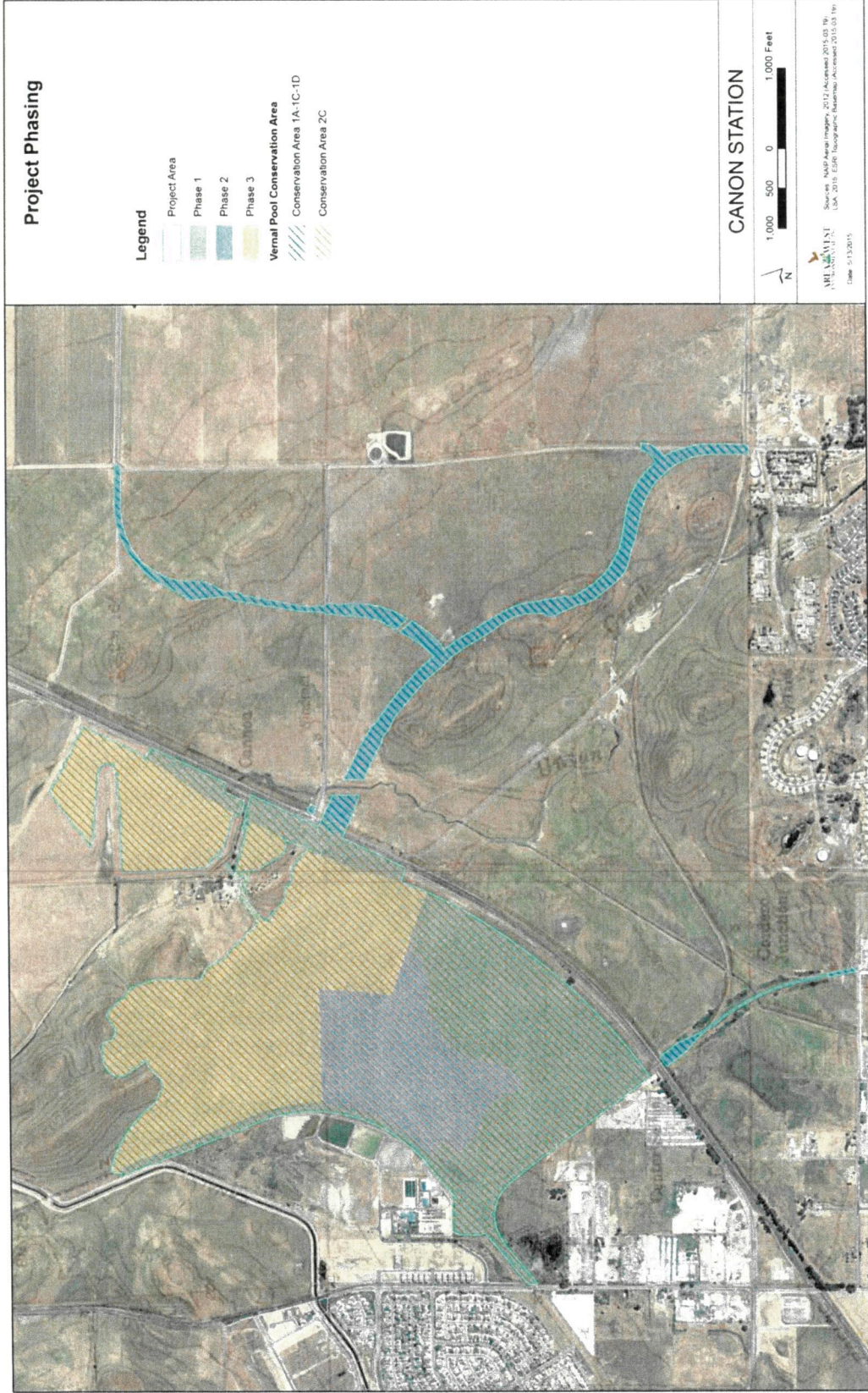


Figure 7. Project Phasing