

- Culvert
- Rohner Creek and Hillside Creek
- Project Area

Paper Size 8.5" x 11" (ANSI A)
0 200 400 600 800 1,000
Feet
Map Projection: Transverse Mercator
Horizontal Datum: North American 1983
Grid: NAD 1983 UTM Zone 10N

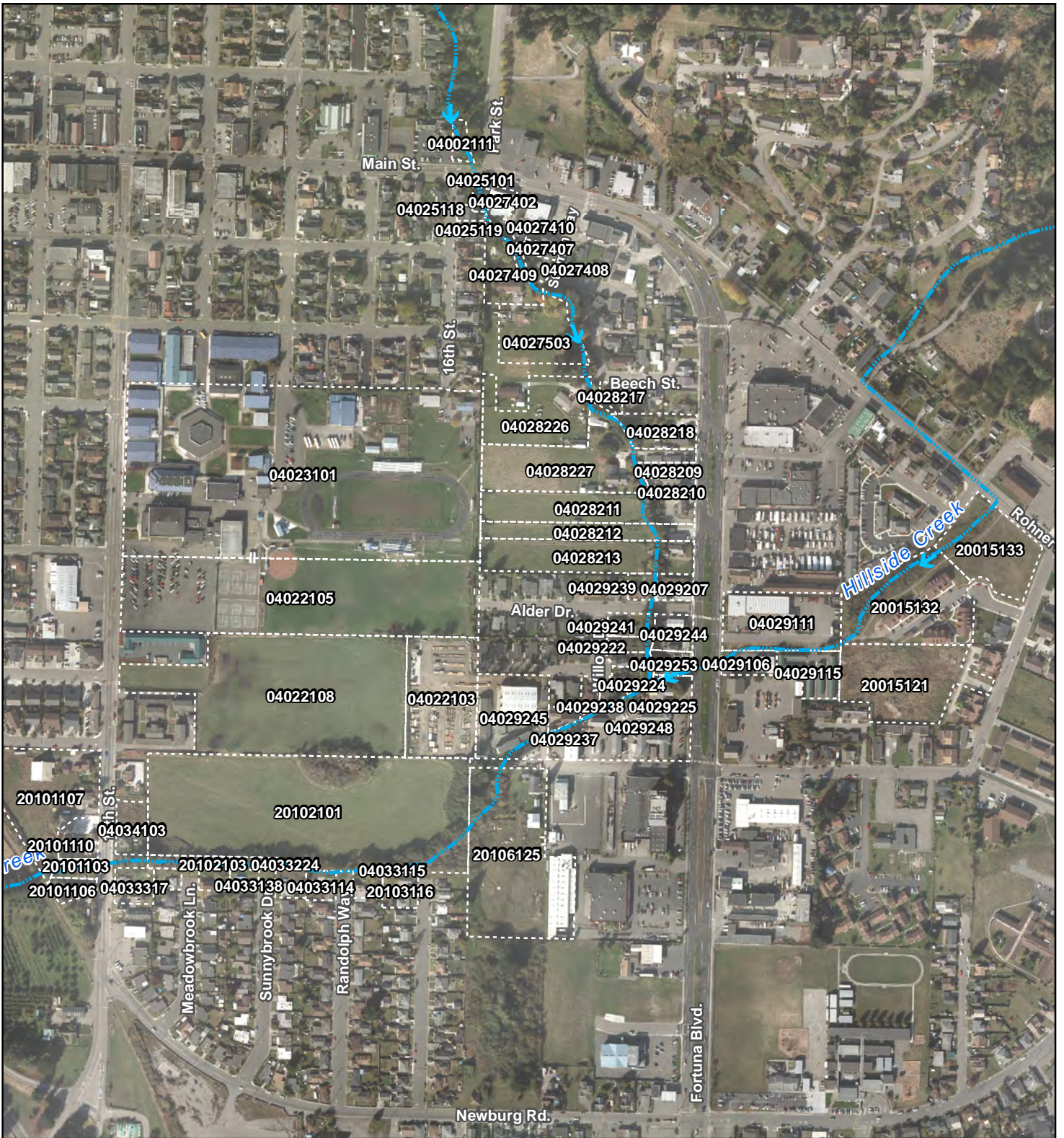


City of Fortuna
Rohner Creek Flood Control, Hbaitat,
and Seismic Improvements Project

Job Number 8411414
Revision A
Date 13 Jan 2015

Vicinity Map

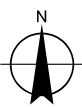
Figure 1



Legend

 Project Area Parcels

Paper Size 8.5" x 11" (ANSI A)
 0 150 300 450 600
 Feet
 Map Projection: Lambert Conformal Conic
 Horizontal Datum: North American 1983
 Grid: NAD 1983 StatePlane California I FIPS 0401 Feet

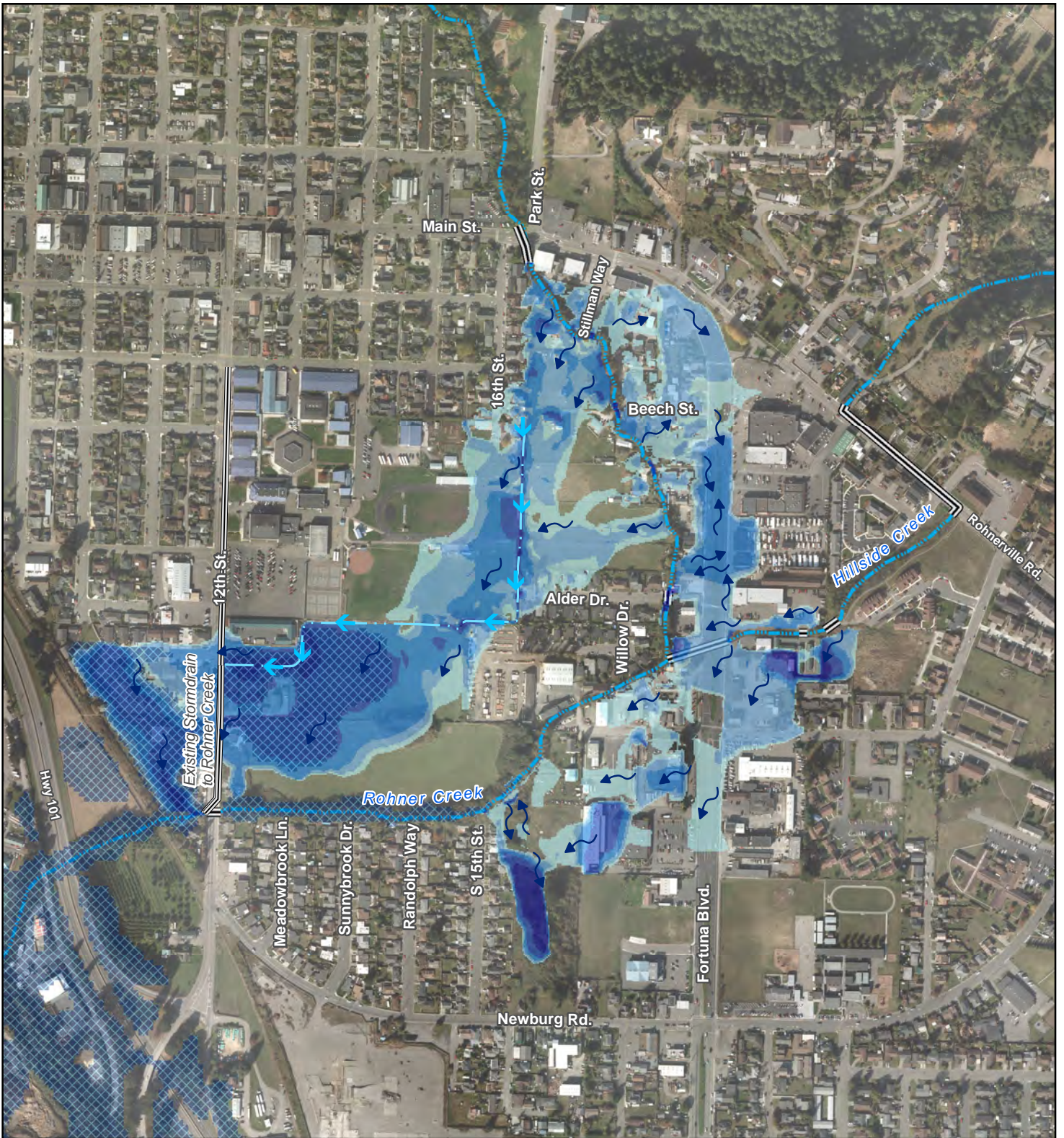


City of Fortuna
 Rohrer Creek Flood Control, Habitat,
 and Seismic Improvements Project

Job Number 8411414
 Revision A
 Date 13 Jan 2015

Project Parcels

Figure 2



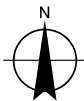
100 Year Storm Modeled Maximum Inundation

- <3"
- 3-6"
- 6-12"
- 12-24"
- >24"
- 100yr Eel at Strong's Creek (45.77ft NAVD88)

FIS Effective Date May 3, 1982

- Stormdrain Pipe/Culvert
- Existing Drainage Ditch with Observed Groundwater Flow
- Creek
- Overland Flow
- Drainage Ditch Flow

Paper Size 8.5" x 11" (ANSI A)
 0 150 300 450 600
 Feet
 Map Projection: Lambert Conformal Conic
 Horizontal Datum: North American 1983
 Grid: NAD 1983 StatePlane California I FIPS 0401 Feet

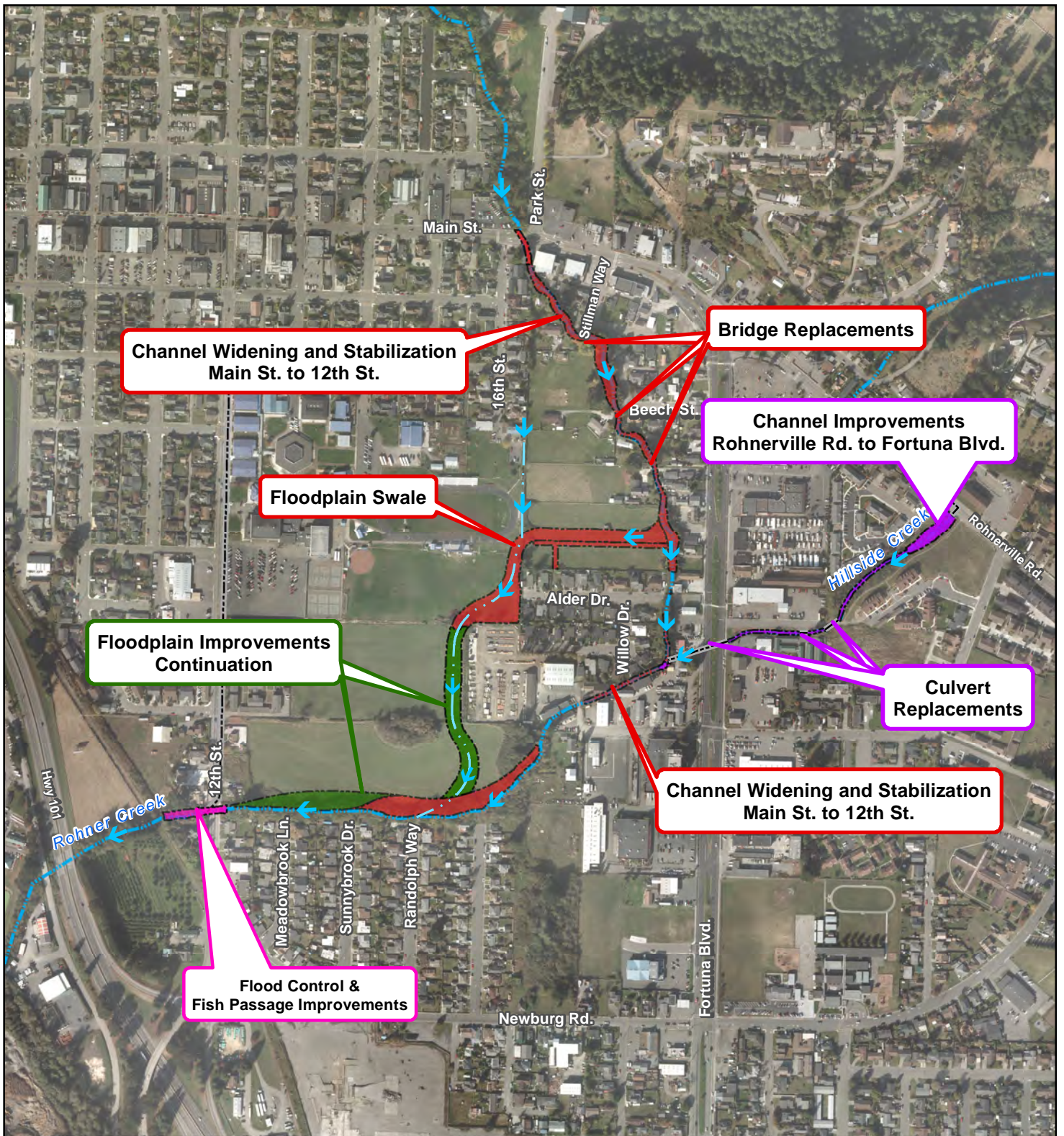


City of Fortuna
 Rohrer Creek Flood Control, Habitat,
 and Seismic Improvements Project

Job Number 8411414
 Revision A
 Date 13 Jan 2015

**Existing Conditions Flooding
 100 Year Flow**

Figure 3



- Phase 1
- Phase 3
- Drainage Ditch
- Flow
- Phase 2
- Phase 4
- Stormdrain Pipe
- Creek

Paper Size 8.5" x 11" (ANSI A)

0 150 300 450 600

Feet

Map Projection: Lambert Conformal Conic

Horizontal Datum: North American 1983

Grid: NAD 1983 StatePlane California I FIPS 0401 Feet

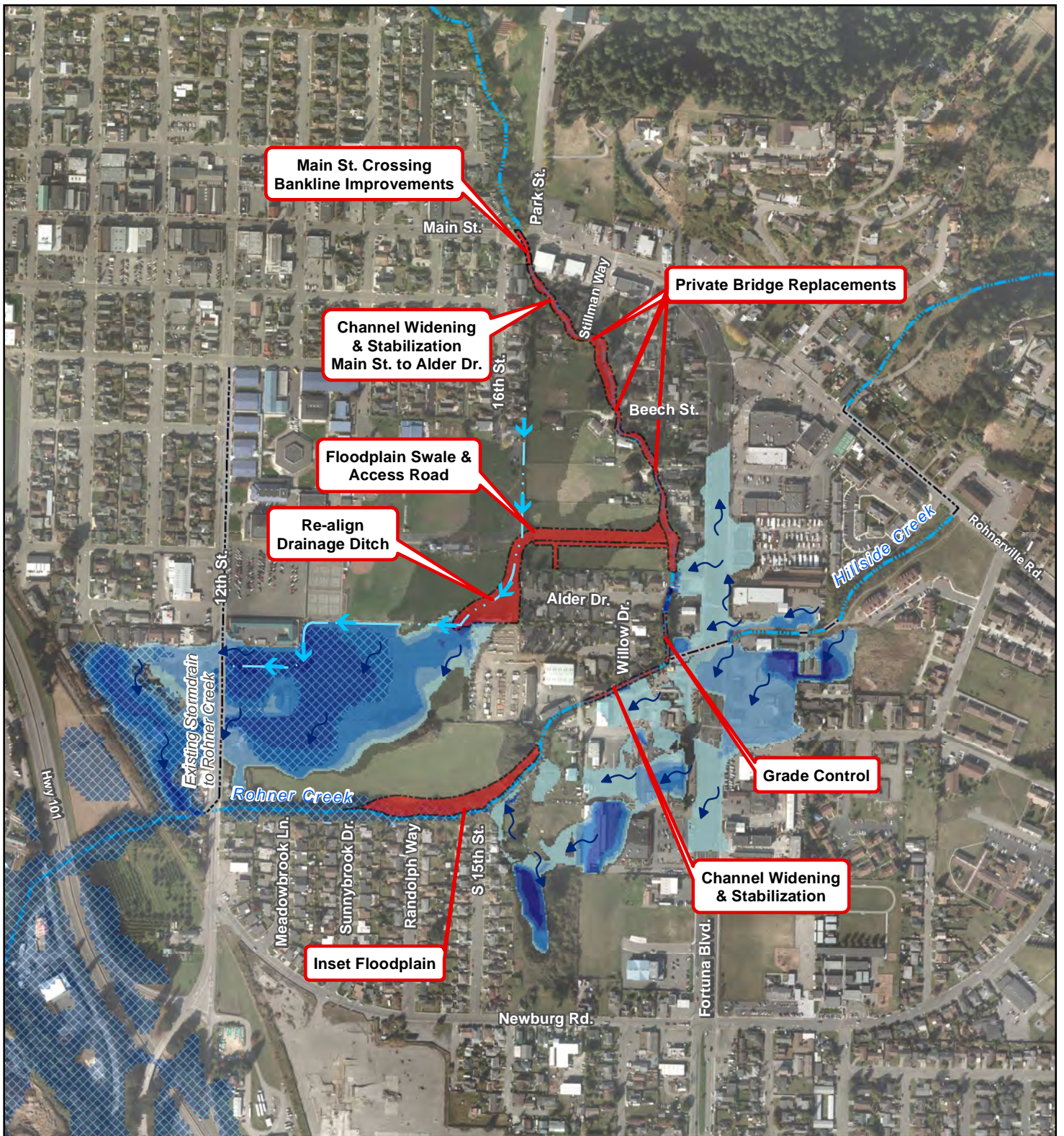


City of Fortuna
Rohnert Creek Flood Control, Habitat,
and Seismic Improvements Project

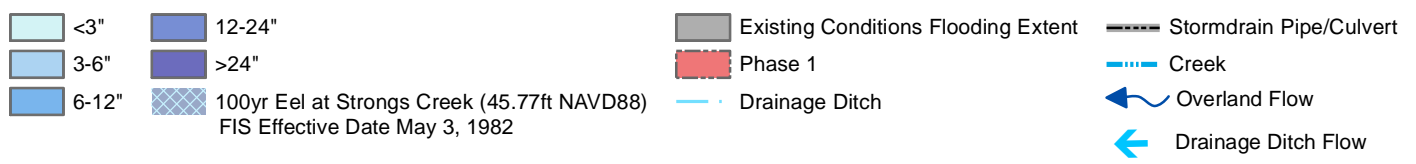
Job Number 8411414
Revision A
Date 23 Dec 2014

Project Phases

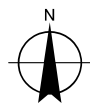
Figure 4



100 Year Storm Modeled Maximum Inundation



Paper Size 8.5" x 11" (ANSI A)
 0 150 300 450 600
 Feet
 Map Projection: Lambert Conformal Conic
 Horizontal Datum: North American 1983
 Grid: NAD 1983 StatePlane California I FIPS 0401 Feet



City of Fortuna
 Rohnert Creek Flood Control, Habitat,
 and Seismic Improvements Project

Job Number 8411414
 Revision A
 Date 23 Dec 2014













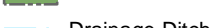

Phase 1
 100 Year Flow

Figure 5

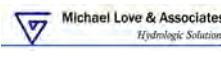
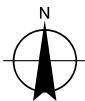
718 Third Street Eureka CA 95501 USA T 707 443 8326 F 707 444 8330 E eureka@ghd.com W www.ghd.com
 © 2012. While every care has been taken to prepare this map, GHD makes no representations or warranties about its accuracy, reliability, completeness or suitability for any particular purpose and cannot accept liability and responsibility of any kind (whether in contract, tort or otherwise) for any expenses, losses, damages and/or costs (including indirect or consequential damage) which are or may be incurred by any party as a result of the map being inaccurate, incomplete or unsuitable in any way and for any reason
 Data source: City of Fortuna\3Di\West, Aerial Photogrammetry, 2010. GHD, Rohnert Creek Flood Control, Seismic & Habitat Improvements, 2013. Created by:bvivan



100 Year Storm Modeled Maximum Inundation

- | | | | |
|--|--|---|---|
|  <3" |  12-24" |  Existing Conditions Flooding Extent |  Stormdrain Pipe |
|  3-6" |  >24" |  Phase 1 |  Creek |
|  6-12" |  100yr Eel at Strong's Creek (45.77ft NAVD88)
FIS Effective Date May 3, 1982 |  Phase 2 |  Overland Flow |
| | |  Drainage Ditch |  Drainage Ditch Flow |

Paper Size 8.5" x 11" (ANSI A)
 0 150 300 450 600
 Feet
 Map Projection: Lambert Conformal Conic
 Horizontal Datum: North American 1983
 Grid: NAD 1983 StatePlane California I FIPS 0401 Feet

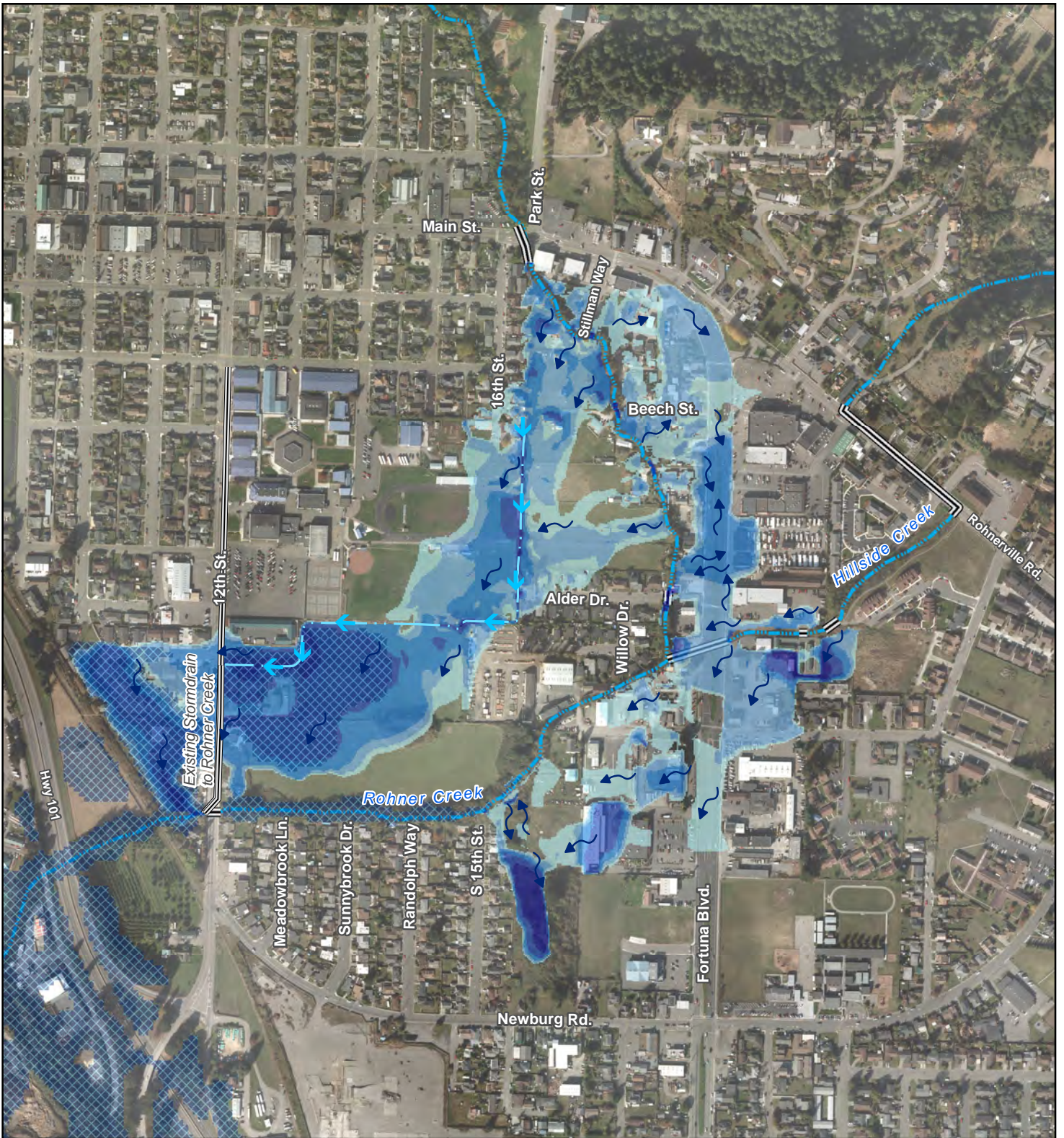


City of Fortuna
 Rohrer Creek Flood Control, Habitat,
 and Seismic Improvements Project

Job Number 8411414
 Revision A
 Date 23 Dec 2014

Phase 2
 100 Year Flow

Figure 6



100 Year Storm Modeled Maximum Inundation

- <3"
- 3-6"
- 6-12"
- 12-24"
- >24"
- 100yr Eel at Strong's Creek (45.77ft NAVD88)

FIS Effective Date May 3, 1982

- Stormdrain Pipe/Culvert
- Existing Drainage Ditch with Observed Groundwater Flow
- Creek
- Overland Flow
- Drainage Ditch Flow

Paper Size 8.5" x 11" (ANSI A)
 0 150 300 450 600
 Feet
 Map Projection: Lambert Conformal Conic
 Horizontal Datum: North American 1983
 Grid: NAD 1983 StatePlane California I FIPS 0401 Feet



City of Fortuna
 Rohrer Creek Flood Control, Habitat,
 and Seismic Improvements Project

Job Number 8411414
 Revision A
 Date 13 Jan 2015

**Existing Conditions Flooding
 100 Year Flow**

Figure 3



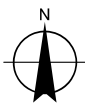
100 Year Storm Modeled Maximum Inundation

- 100yr Eel at Strongs Creek (45.77ft NAVD88)
FIS Effective Date May 3, 1982
- Existing Conditions Flooding Extent

- Phase 1
- Phase 2
- Phase 3
- Phase 4

- Drainage
- Stormdrain Pipe
- Creek
- Drainage Ditch Flow

Paper Size 8.5" x 11" (ANSI A)
 0 150 300 450 600
 Feet
 Map Projection: Lambert Conformal Conic
 Horizontal Datum: North American 1983
 Grid: NAD 1983 StatePlane California I FIPS 0401 Feet



City of Fortuna
 Rohner Creek Flood Control, Habitat,
 and Seismic Improvements Project

Job Number 8411414
 Revision A
 Date 13 Jan 2015

**Phase 4
 100 Year Flow**

Figure 8



- Phase 1
- Phase 2
- Phase 3
- Phase 4
- Beneficial Sediment Reuse Area
- Action Area
- Drainage Ditch
- Creek
- Flow Direction

<p>Paper Size 8.5" x 11" (ANSI A) 0 150 300 450 600 Feet Map Projection: Lambert Conformal Conic Horizontal Datum: North American 1983 Grid: NAD 1983 StatePlane California I FIPS 0401 Feet</p>					<p>City of Fortuna Rohner Creek Flood Control, Habitat, and Seismic Improvements Project</p>	<p>Job Number 8411414 Revision A Date 13 Jan 2015</p>
--	--	--	--	--	--	---

Action Area **Figure 9**

\ghdnet\ghd\US\Eureka\Projects\Legacy\Projects\01054 City of Fortuna\8411414 RohnerCreekFlood PH2108-GIS\Maps\Figures\Permits\Project Description\F9_Action_Area.mxd
 © 2012. While every care has been taken to prepare this map, GHD makes no representations or warranties about its accuracy, reliability, completeness or suitability for any particular purpose and cannot accept liability and responsibility of any kind (whether in contract, tort or otherwise) for any expenses, losses, damages and/or costs (including indirect or consequential damage) which are or may be incurred by any party as a result of the map being inaccurate, incomplete or unsuitable in any way and for any reason.
 Data source: City of Fortuna\3Di West, Aerial Photogrammetry, 2010. GHD, Rohner Creek Flood Control, Seismic & Habitat Improvements, 2013. Created by: bviyan