

193 Blue Ravine Rd., Ste. 165  
 Folsom, CA 95630  
 Phone: (916) 985-1188

**Figure 1: Regional Map  
 The Faria Preserve**

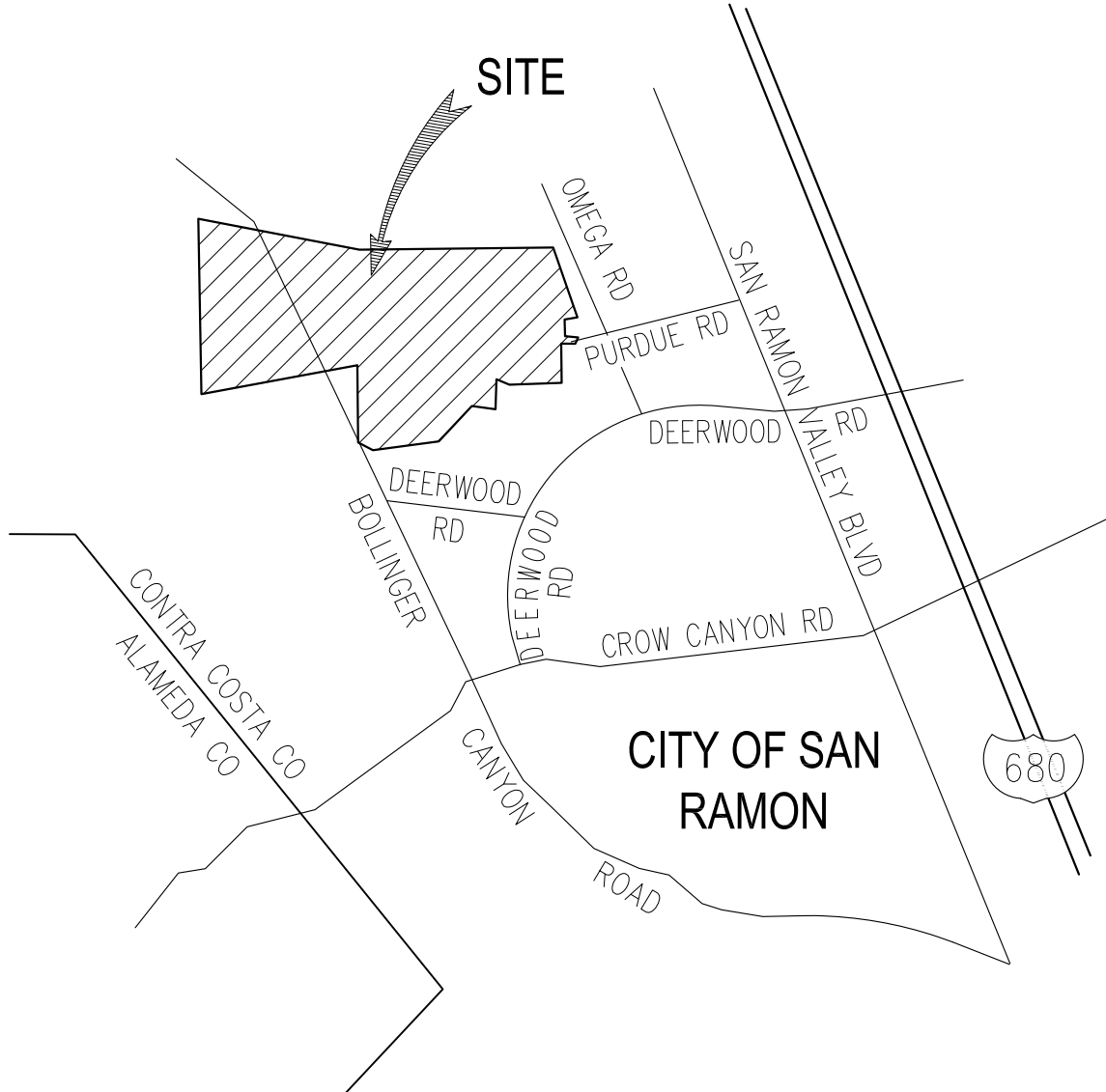
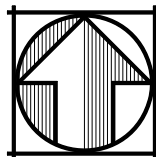


FIGURE 2  
**VICINITY MAP**  
**THE FARIA PRESERVE**

CITY OF SAN RAMON    CONTRA COSTA COUNTY    CALIFORNIA

DATE: JUNE 22, 2012

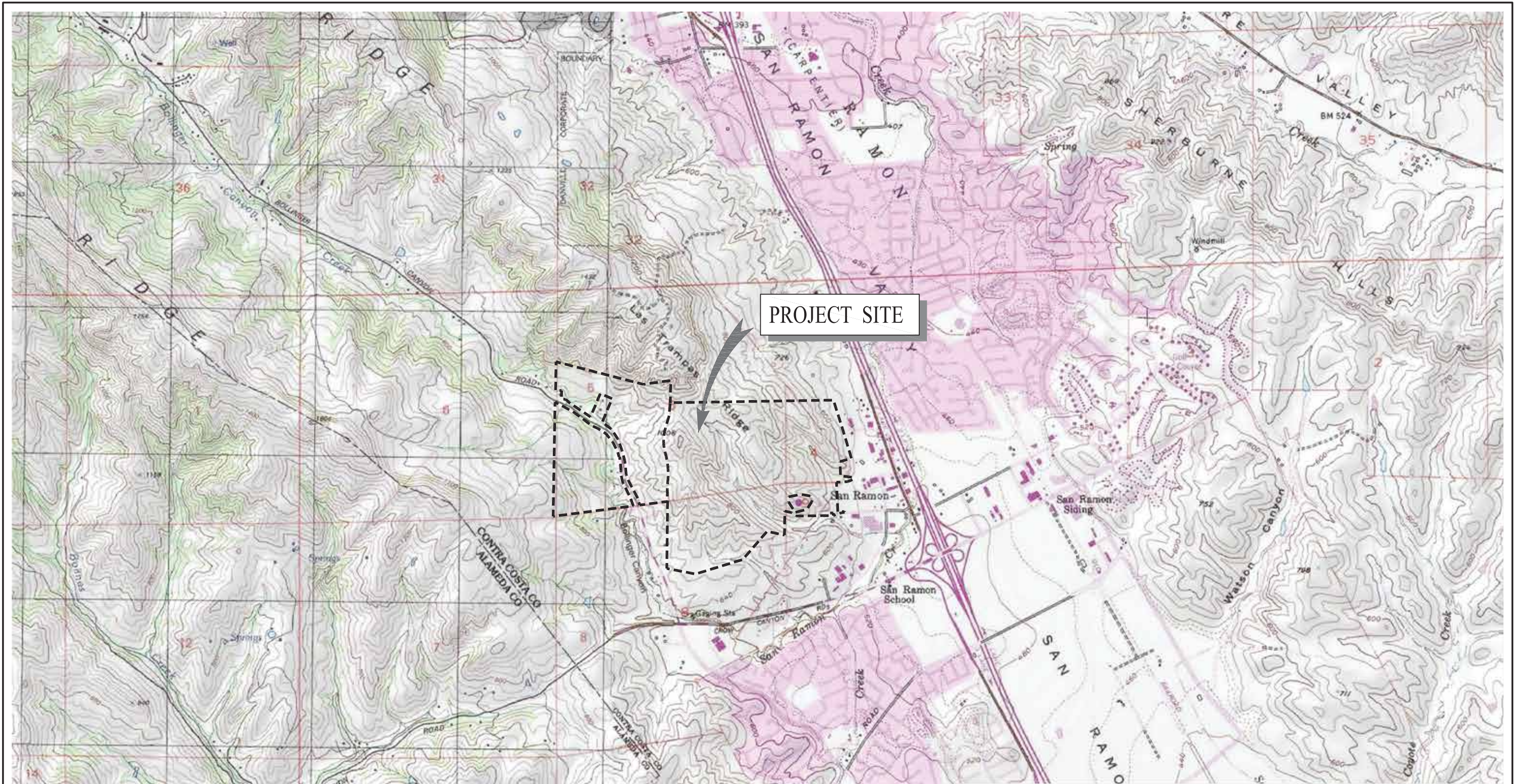
NOT TO SCALE



Carlson, Barbee  
 & Gibson, Inc.  
 CIVIL ENGINEERS • SURVEYORS • PLANNERS

6111 BOLLINGER CANYON ROAD, SUITE 150  
 SAN RAMON, CALIFORNIA 94583


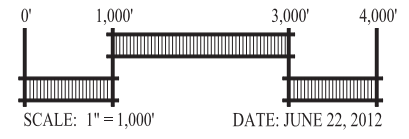
(925) 866-0322  
 FAX (925) 866-8575




PROJECT SITE

FIGURE 3  
 USGS QUAD MAP OVERLAY  
 THE FARIA PRESERVE

CITY OF SAN RAMON    CONTRA COSTA COUNTY    CALIFORNIA

SCALE: 1" = 1,000'      DATE: JUNE 22, 2012


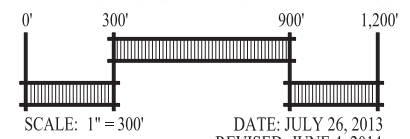


Carlson, Barbee & Gibson, Inc.  
 CIVIL ENGINEERS • SURVEYORS • PLANNERS  
 6111 BOLLINGER CANYON ROAD, SUITE 150    (925) 866-0322  
 SAN RAMON, CALIFORNIA 94583    FAX (925) 866-8575




FIGURE 4  
**AERIAL MAP**  
 THE FARIA PRESERVE

CITY OF SAN RAMON    CONTRA COSTA COUNTY    CALIFORNIA

DATE: JULY 26, 2013  
 REVISED: JUNE 4, 2014



Carlson, Barbee  
 & Gibson, Inc.  
 CIVIL ENGINEERS • SURVEYORS • PLANNERS  
 2633 CAMINO RAMON, SUITE 350  
 SAN RAMON, CALIFORNIA 94583    (925) 866-0322

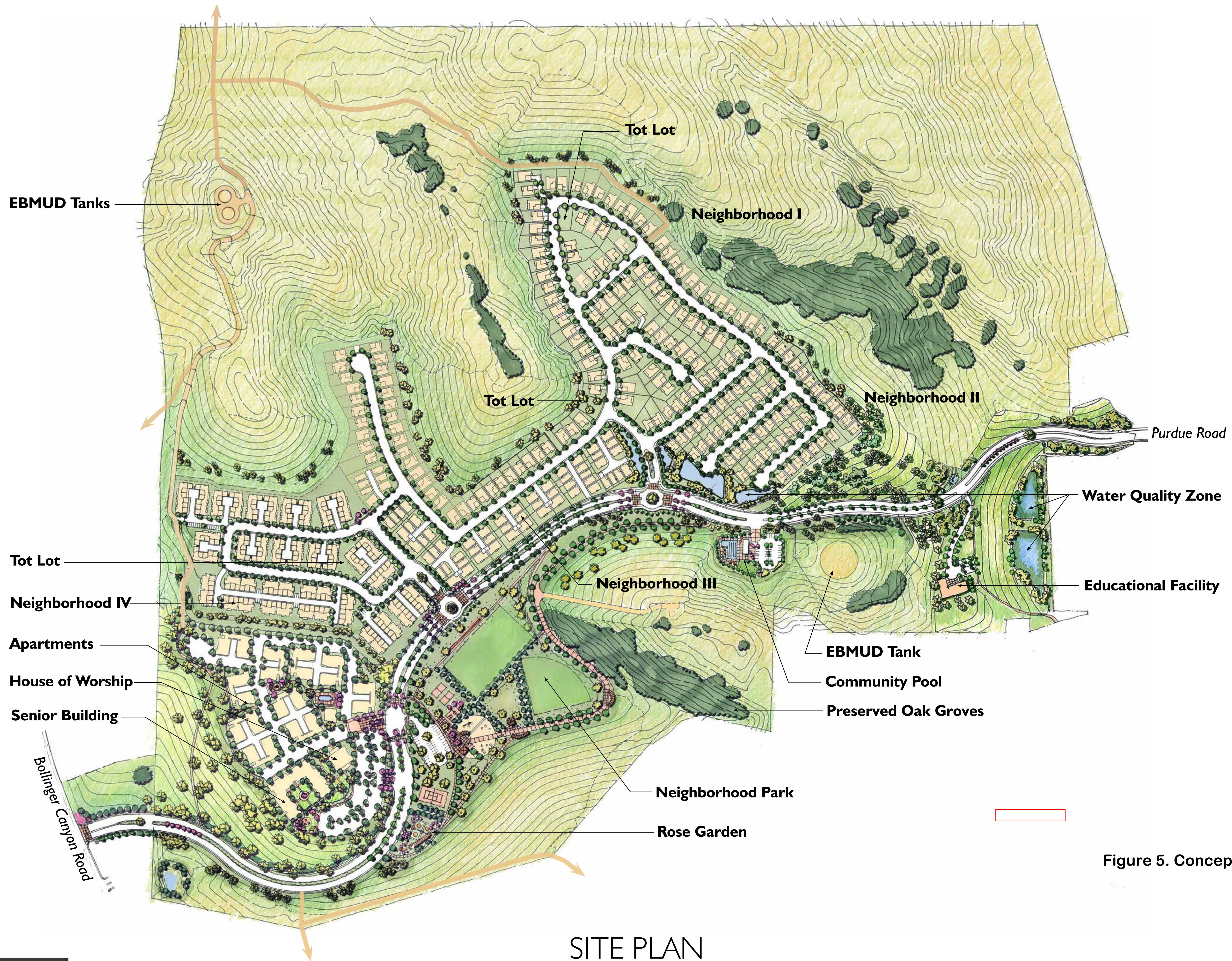


Figure 5. Conceptual Site Plan



**LEGEND**

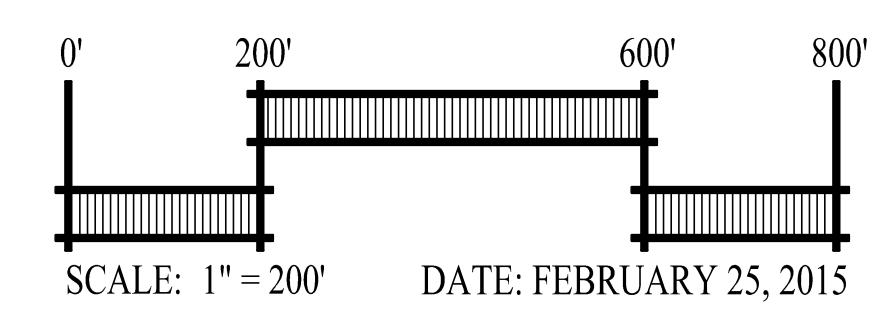
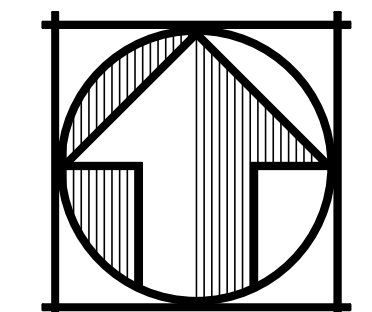
DESCRIPTION	SYMBOL
STUDY AREA BOUNDARY	
WETLANDS REGULATED BY SECTION 401 & 404 OF THE CWA (3.29± ACRES)	
OTHER WATERS REGULATED BY SECTION 401 & 404 OF THE CWA (3.71± ACRES; 19,097± LINEAR FEET)	

FIGURE 5

**DELINEATION MAP**  
**THE FARIA PRESERVE**

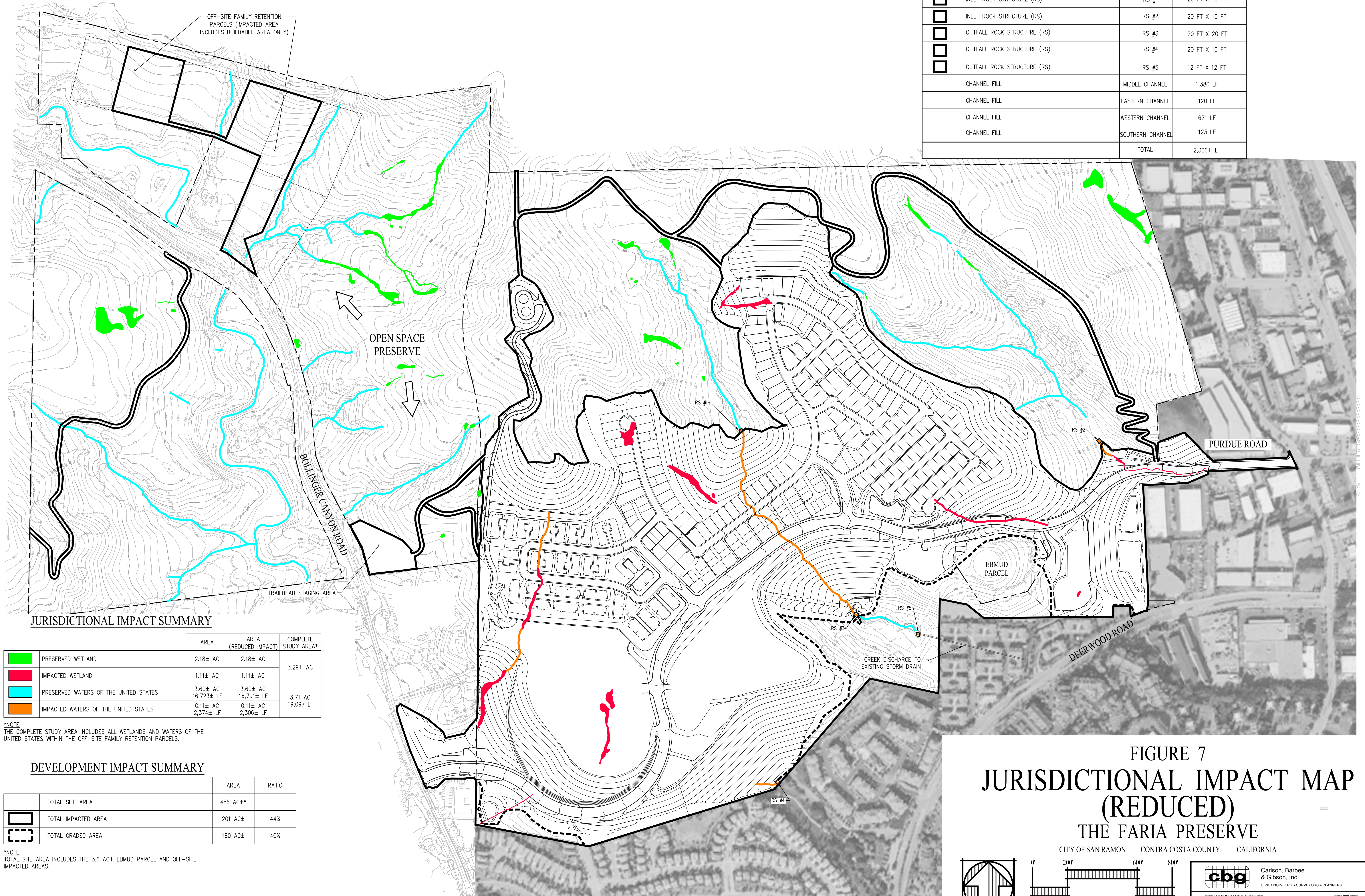
CITY OF SAN RAMON    CONTRA COSTA COUNTY    CALIFORNIA

OLBERDING ENVIRONMENTAL, INC.  
 3170 Crow Canyon Place, Suite 260  
 San Ramon, California 94583  
 (408) 472-4343 cell  
 (925) 866-2111 office  
 (925) 866-2126 fax



ROCK OUTFALL/INLET IMPACT SUMMARY WITHIN JURISDICTIONAL WATERS

	DESCRIPTION	RS No.	IMPACTED AREA
	INLET ROCK STRUCTURE (RS)	RS #1	20 FT X 10 FT
	INLET ROCK STRUCTURE (RS)	RS #2	20 FT X 10 FT
	OUTFALL ROCK STRUCTURE (RS)	RS #3	20 FT X 20 FT
	OUTFALL ROCK STRUCTURE (RS)	RS #4	20 FT X 10 FT
	OUTFALL ROCK STRUCTURE (RS)	RS #5	12 FT X 12 FT
	CHANNEL FILL	MIDDLE CHANNEL	1,380 LF
	CHANNEL FILL	EASTERN CHANNEL	120 LF
	CHANNEL FILL	WESTERN CHANNEL	621 LF
	CHANNEL FILL	SOUTHERN CHANNEL	123 LF
		TOTAL	2,306± LF



JURISDICTIONAL IMPACT SUMMARY

	AREA	AREA (REDUCED IMPACT)	COMPLETE STUDY AREA*
	PRESERVED WETLAND	2.18± AC	2.18± AC
	IMPACTED WETLAND	1.11± AC	1.11± AC
	PRESERVED WATERS OF THE UNITED STATES	3.60± AC 16,723± LF	3.60± AC 16,791± LF
	IMPACTED WATERS OF THE UNITED STATES	0.11± AC 2,374± LF	0.11± AC 2,306± LF
			3.29± AC

\*NOTE:  
THE COMPLETE STUDY AREA INCLUDES ALL WETLANDS AND WATERS OF THE UNITED STATES WITHIN THE OFF-SITE FAMILY RETENTION PARCELS.

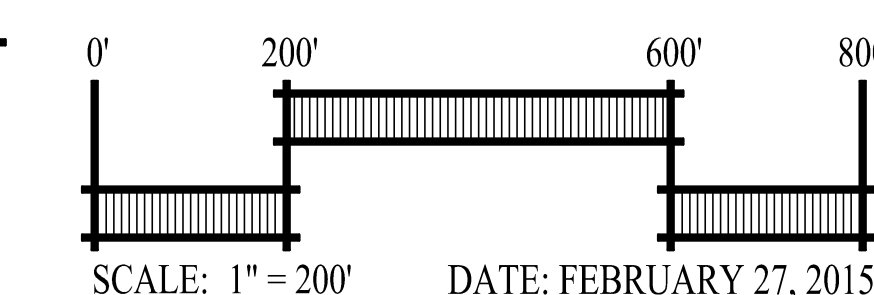
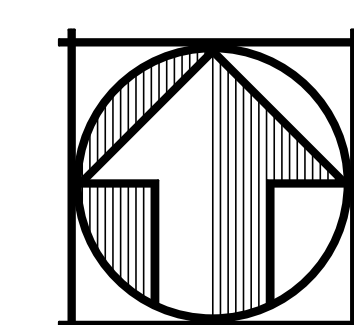
DEVELOPMENT IMPACT SUMMARY

	AREA	RATIO
	TOTAL SITE AREA	456 AC±*
	TOTAL IMPACTED AREA	201 AC± 44%
	TOTAL GRADED AREA	180 AC± 40%

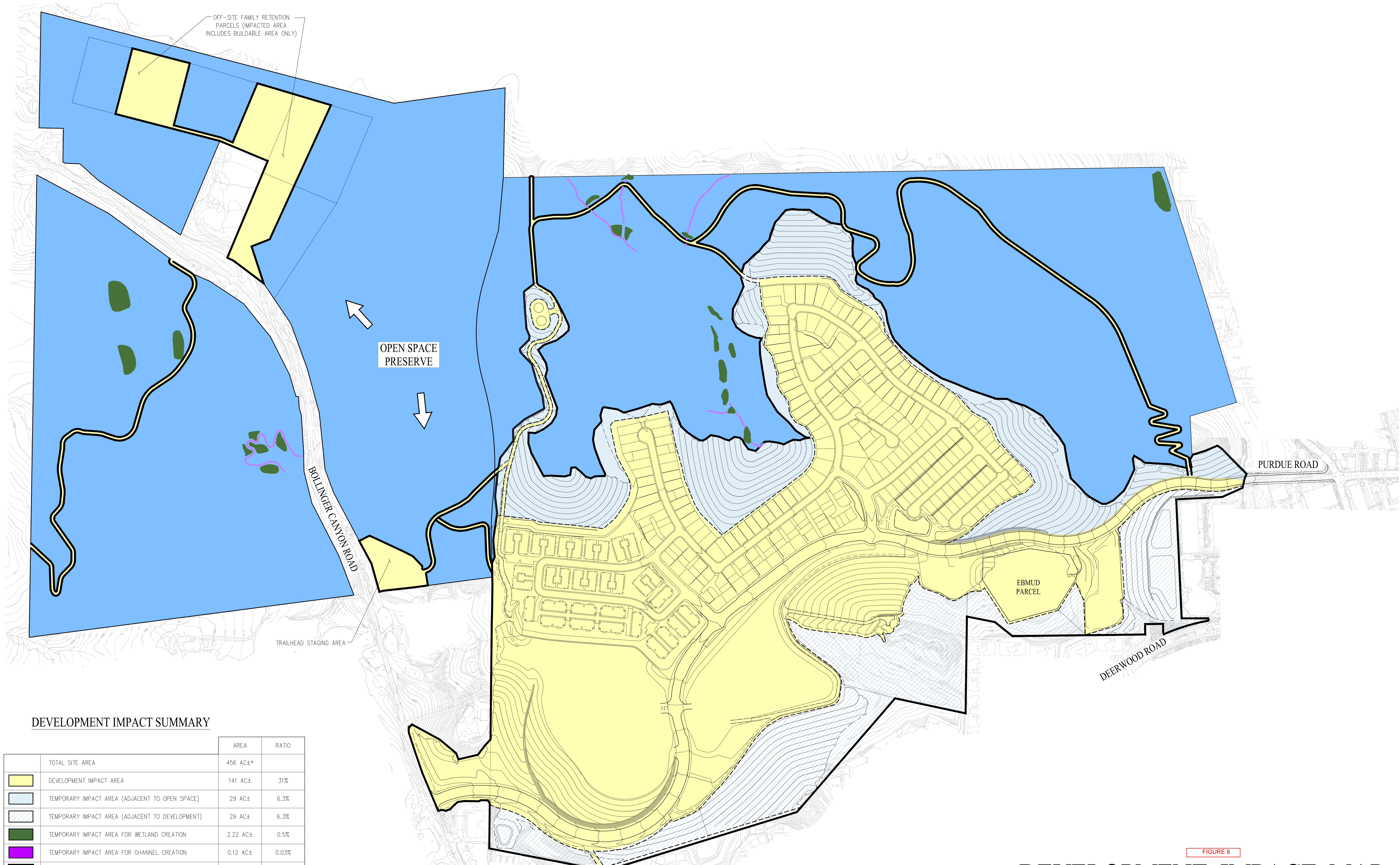
\*NOTE:  
TOTAL SITE AREA INCLUDES THE 3.6 AC± EBMUD PARCEL AND OFF-SITE IMPACTED AREAS.

FIGURE 7  
**JURISDICTIONAL IMPACT MAP (REDUCED)**  
 THE FARIA PRESERVE

CITY OF SAN RAMON CONTRA COSTA COUNTY CALIFORNIA



Carlson, Barbee & Gibson, Inc.  
 CIVIL ENGINEERS • SURVEYORS • PLANNERS  
 2633 CAMINO RAMON, SUITE 350  
 SAN RAMON, CALIFORNIA 94583 (925) 866-0322



OFF-SITE FAMILY RETENTION PARCELS (IMPACTED AREA INCLUDES BUILDABLE AREA ONLY)

OPEN SPACE PRESERVE

BOLLINGER CANYON ROAD

TRAILHEAD STAGING AREA

EBMUD PARCEL

DEERWOOD ROAD

PURDUE ROAD

**DEVELOPMENT IMPACT SUMMARY**

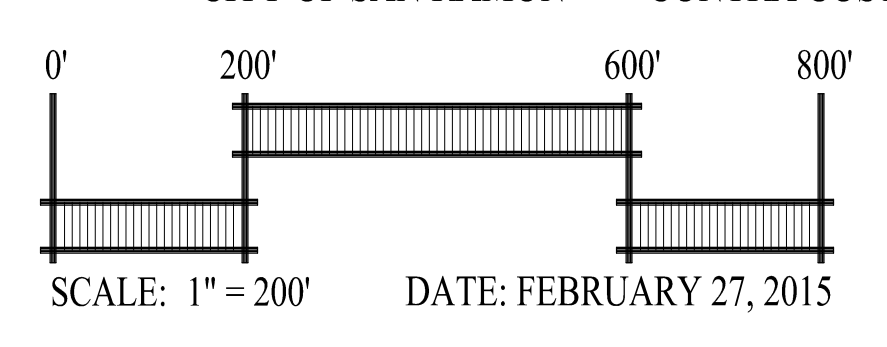
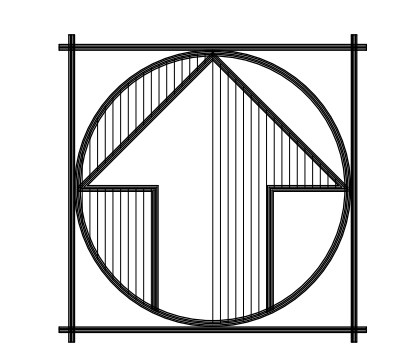
	AREA	RATIO
TOTAL SITE AREA	456 AC±*	
DEVELOPMENT IMPACT AREA	141 AC±	31%
TEMPORARY IMPACT AREA (ADJACENT TO OPEN SPACE)	29 AC±	6.3%
TEMPORARY IMPACT AREA (ADJACENT TO DEVELOPMENT)	29 AC±	6.3%
TEMPORARY IMPACT AREA FOR WETLAND CREATION	2.22 AC±	0.5%
TEMPORARY IMPACT AREA FOR CHANNEL CREATION	0.12 AC±	0.03%
TOTAL IMPACTED AREA	201 AC±	44%
AREA AVAILABLE FOR MITIGATION	255 AC±	56%

\*NOTE: TOTAL SITE AREA INCLUDES THE 3.6 AC± EBMUD PARCEL AND OFF-SITE IMPACTED AREAS

FIGURE 8

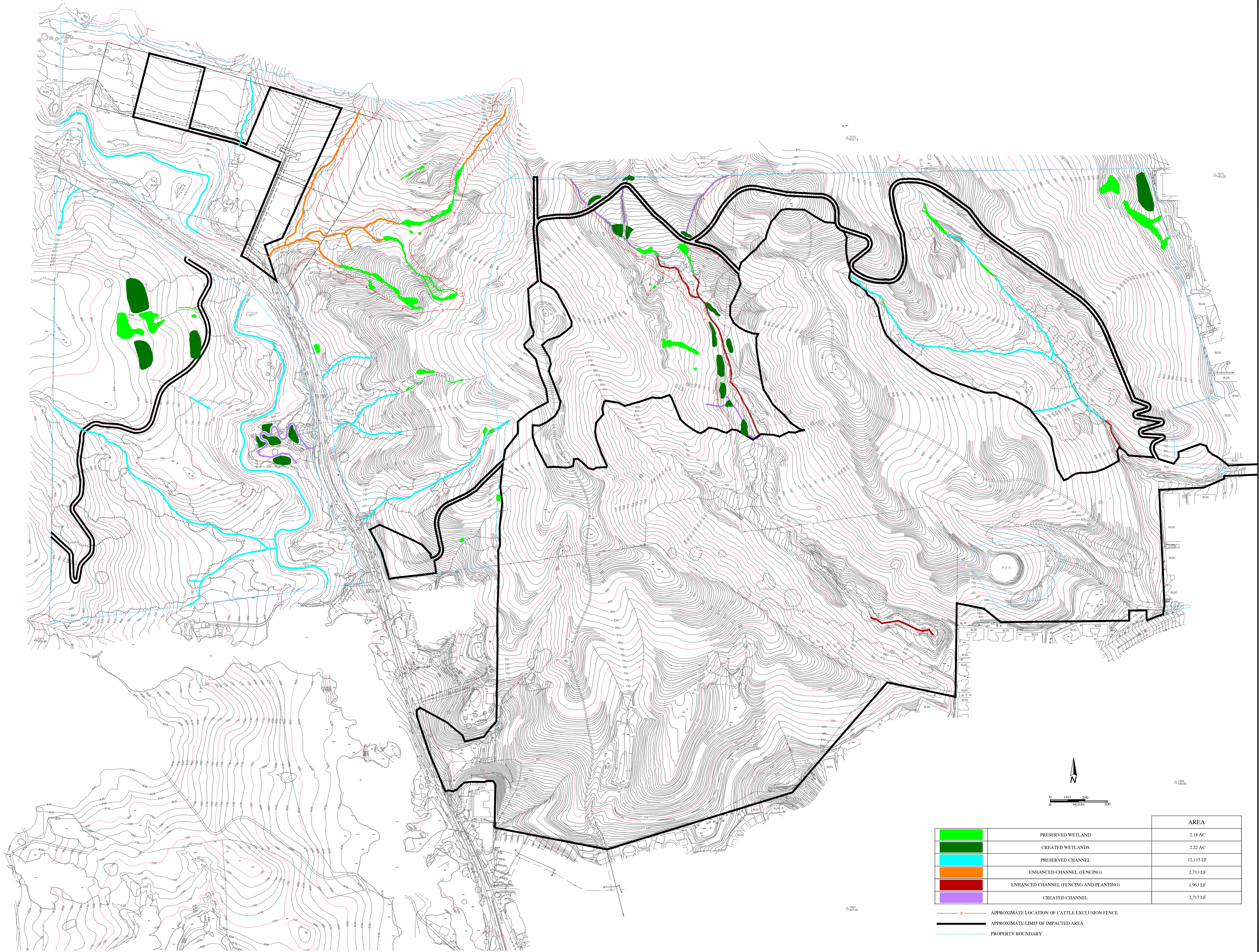
**DEVELOPMENT IMPACT MAP**  
**THE FARIA PRESERVE**

CITY OF SAN RAMON CONTRA COSTA COUNTY CALIFORNIA



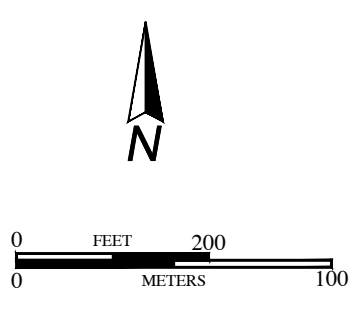
**cbg** Carlson, Barbee & Gibson, Inc.  
 CIVIL ENGINEERS • SURVEYORS • PLANNERS  
 2633 CAMINO RAMON, SUITE 350  
 SAN RAMON, CALIFORNIA 94583  
 (925) 866-0322  
 SAN RAMON • LATHROP





	AREA
<span style="color: green;">█</span>	PRESERVED WETLAND 2.18 AC
<span style="color: darkgreen;">█</span>	CREATED WETLANDS 2.22 AC
<span style="color: cyan;">█</span>	PRESERVED CHANNEL 12,115 LF
<span style="color: orange;">█</span>	ENHANCED CHANNEL (FENCING) 2,713 LF
<span style="color: red;">█</span>	ENHANCED CHANNEL (FENCING AND PLANTING) 1,963 LF
<span style="color: purple;">█</span>	CREATED CHANNEL 2,717 LF

- x — APPROXIMATE LOCATION OF CATTLE EXCLUSION FENCE
- APPROXIMATE LIMIT OF IMPACTED AREA
- PROPERTY BOUNDARY



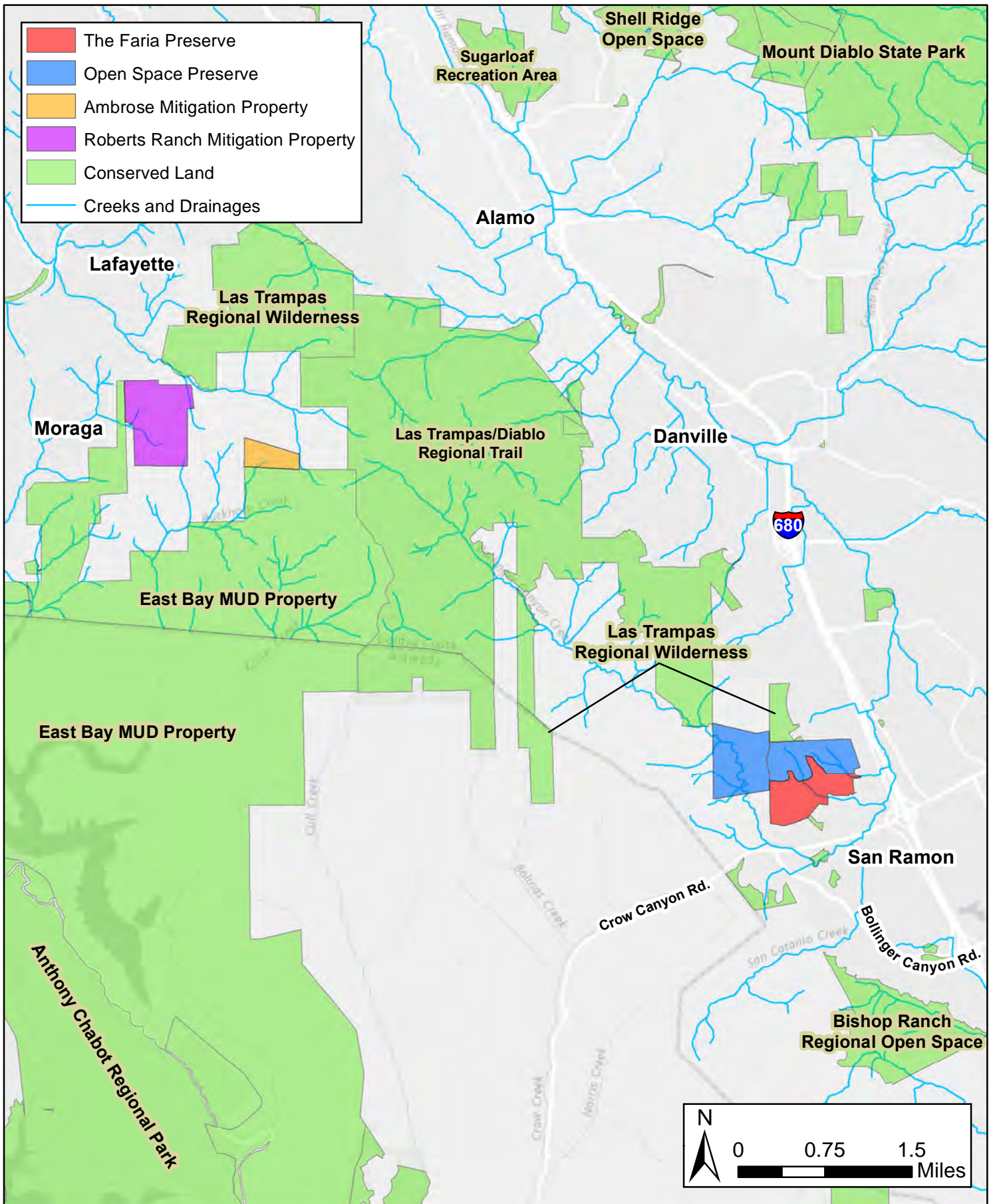
CONTRACT NO. 6445 OF 6445, INFORMATION THAT IS PROVIDED IN THIS DRAWING WAS OBTAINED FROM THE CLIENT AND THE CONTRACTOR. THE CONTRACTOR IS NOT RESPONSIBLE FOR THE ACCURACY OF THE INFORMATION PROVIDED BY THE CLIENT OR THE CONTRACTOR. THE CONTRACTOR IS NOT RESPONSIBLE FOR THE ACCURACY OF THE INFORMATION PROVIDED BY THE CLIENT OR THE CONTRACTOR.



193 Blue Ravine Rd., Ste. 165  
Folsom, CA 95630  
Phone: (916) 985-1188

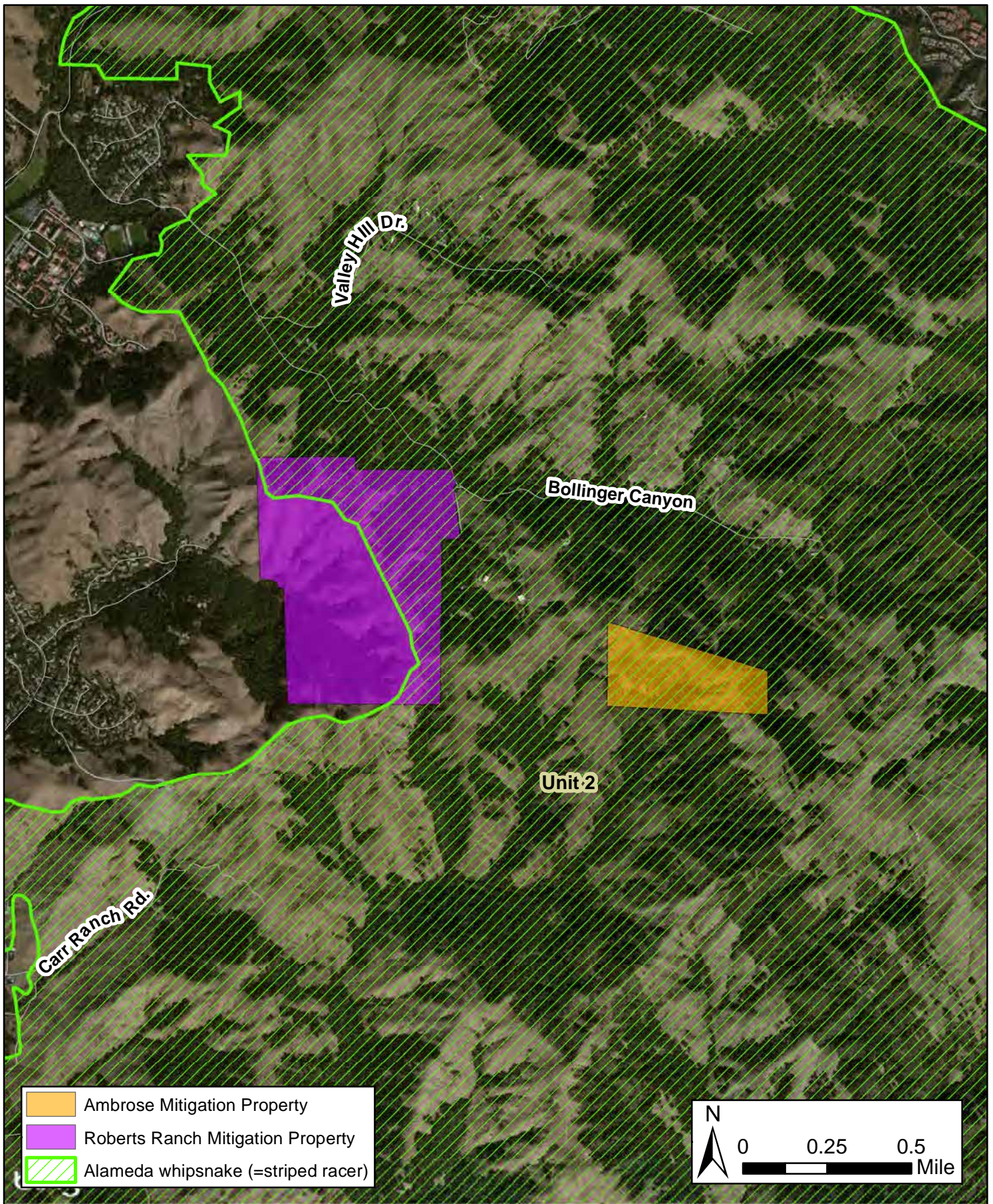
**Figure 10: Offsite Channel Enhancement Mitigation Location The Faria Preserve**

*Aerial Source and Date: ESRI/DigitalGlobe; 11/02/2010*



193 Blue Ravine Rd., Ste. 165  
 Folsom, CA 95630  
 Phone: (916) 985-1188

**Figure 11: Offsite Species Mitigation Location Map - Ambrose and Roberts Ranch**

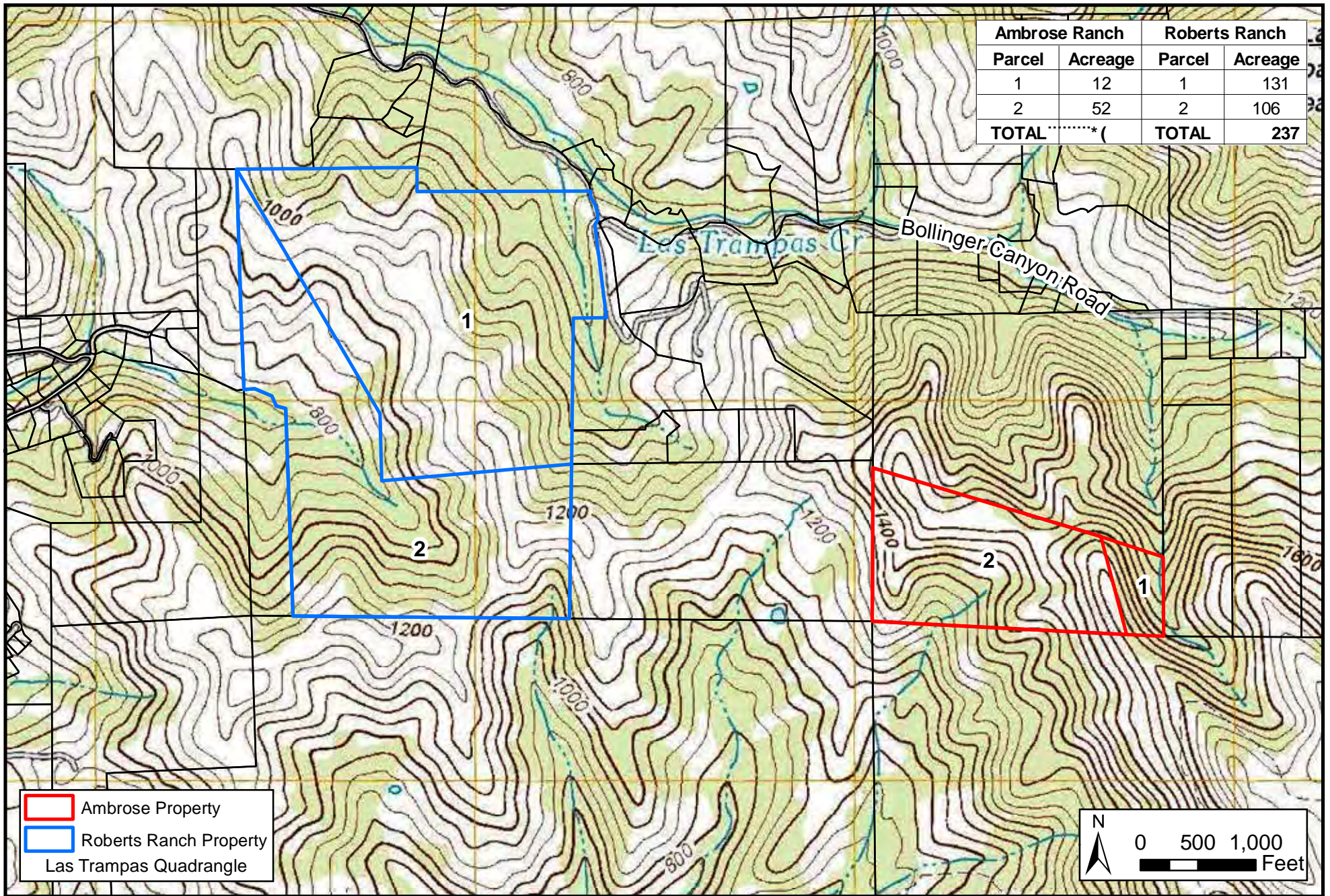


**Figure 12: Alameda Whipsnake  
Critical Habitat Map Ambrose and  
Roberts Ranch Mitigation Properties  
The Faria Preserve**

*Aerial Imagery Source and Date: Bing/Microsoft; 11/02/2010*



193 Blue Ravine Rd., Ste. 165  
Folsom, CA 95630  
Phone: (916) 985-1188



193 Blue Ravine Rd., Ste. 165  
 Folsom, CA 95630  
 Phone: (916) 985-1188

**Figure 13: USGS Quadrangle Map  
 Ambrose and Roberts Ranch  
 Mitigation Properties  
 Faria Preserve**