



Figure 1. Project Site Location

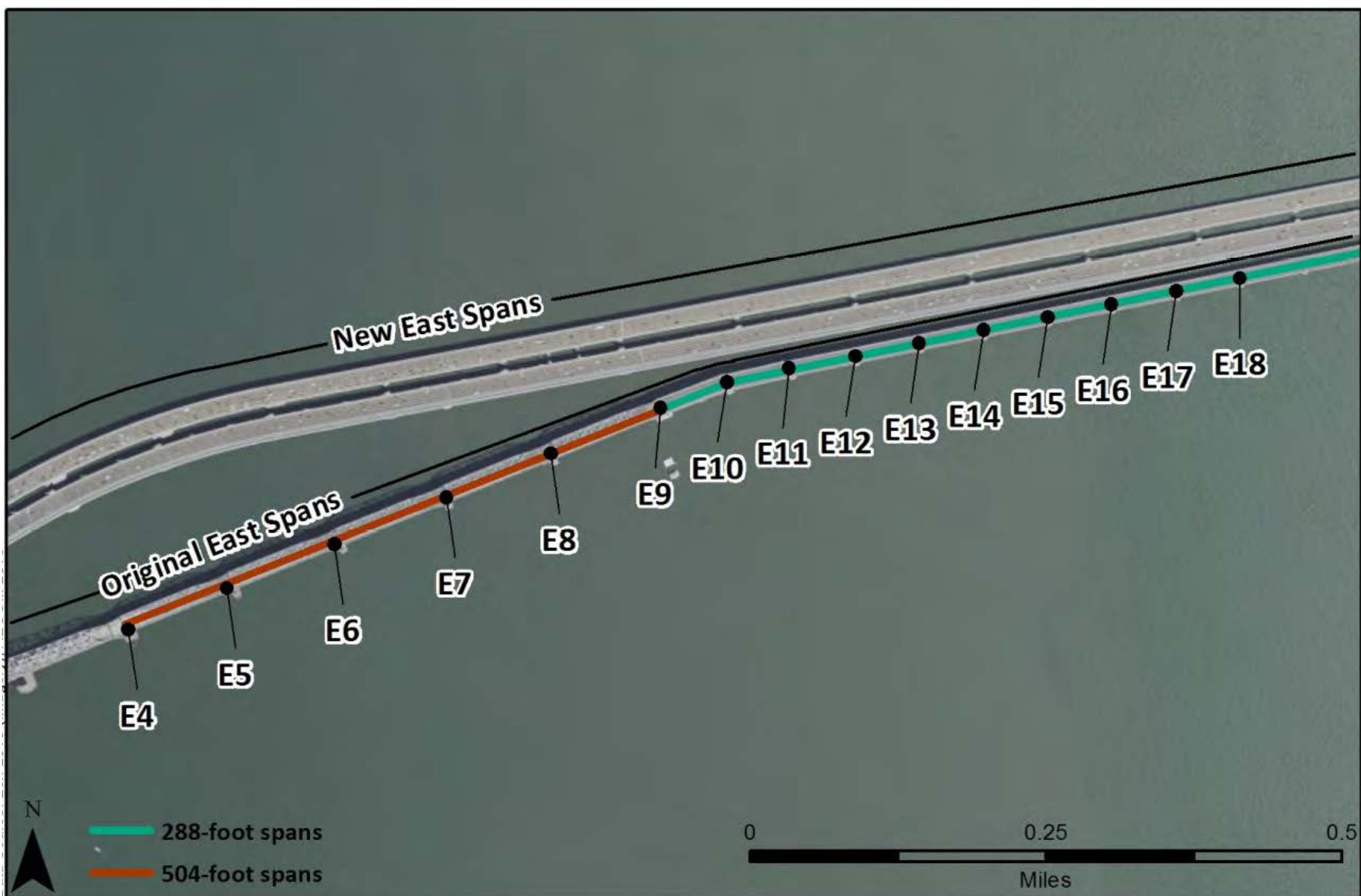


Figure 2. Locations of Original East Span Marine Foundations, Piers E4 to E18

Table 1. Location Details for Marine Foundations of the SFOBB Original East Span

Pier Number	Approximate Distance to YBI		Approximate Distance to OTD		Approximate Coordinates
	Feet	Meters	Feet	Meters	
E4	2,000	610	6,515	1,986	37° 48' 58.53" N, 122° 21' 08.69" W
E5	2,490	759	6,010	1,832	37° 49' 00.35" N, 122° 21' 02.84" W
E6	3,058	932	5,511	1,680	37° 49' 02.38" N, 122° 20' 56.93" W
E7	3,580	1,091	5,008	1,526	37° 49' 04.23" N, 122° 20' 50.90" W
E8	4,070	1,241	4,504	1,373	37° 49' 06.18" N, 122° 20' 45.14" W
E9	4,590	1,399	4,001	1,220	37° 49' 08.13" N, 122° 20' 39.17" W
E10	4,897	1,493	3,688	1,124	37° 49' 09.24" N, 122° 20' 35.57" W
E11	5,185	1,580	3,404	1,038	37° 49' 09.83" N, 122° 20' 31.97" W
E12	5,478	1,670	3,110	948	37° 49' 10.43" N, 122° 20' 28.43" W
E13	5,765	1,757	2,818	859	37° 49' 11.00" N, 122° 20' 24.90" W
E14	6,053	1,845	2,526	770	37° 49' 11.56" N, 122° 20' 21.25" W
E15	6,343	1,933	2,232	680	37° 49' 12.06" N, 122° 20' 17.69" W
E16	6,628	2,020	1,951	595	37° 49' 12.64" N, 122° 20' 14.19" W
E17	6,923	2,110	1,666	508	37° 49' 13.24" N, 122° 20' 10.68" W
E18	7,216	2,199	1,376	419	37° 49' 13.75" N, 122° 20' 06.97" W

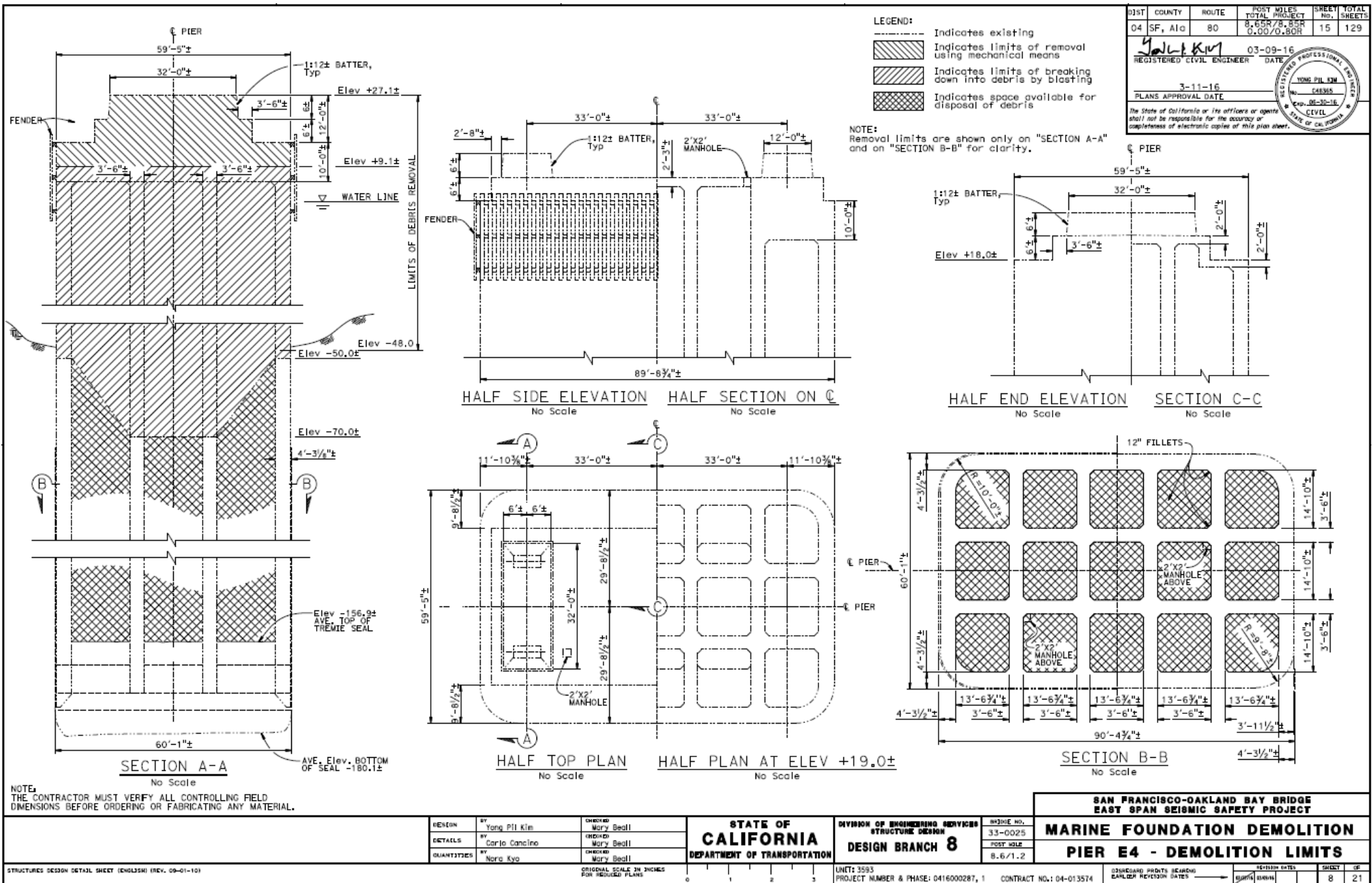


Figure 3. Pier E4 Structure

Table 2. Approximate Dimensions of Original East Span Marine Foundations

Pier Number	Structural Element											
	Concrete Seal			Concrete Slab			Hollow Pier			Pedestal		
	Length (feet)	Width (feet)	Height (feet)	Length (feet)	Width (feet)	Height (feet)	Length (feet)	Width (feet)	Height (feet)	Base Length (feet)	Base Width (feet)	Height (feet)
E6	128	68	18	108	48	6	90	30	34	20.5	16.5	17
E7	128	68	18	108	48	6	90	30	34	20.5	16.5	17
E8	128	68	18	108	48	6	90	30	34	20.5	16.5	17
E9	100	100	16	88	81	6	86	72	31.5	16	12	17
E10	112	44	16	96	27	5	90	21	32	15	12	17
E11	108	48	16	92	31	5	86	25	32	19	14	17
E12	108	44	16	91	27	5	74	21	32	15	12	17
E13	108	44	16	91	27	5	74	21	32	15	12	17
E14	108	44	16	91	27	5	84	21	32	15	12	17
E15	108	44	16	91	27	5	84	21	32	15	12	17
E16	108	44	16	91	27	5	84	21	32	15	12	17
E17	108	48	16	92	32	6	88	26	31	24	16.5	45
E18	108	48	16	92	32	6	88	26	31	24	16.5	37

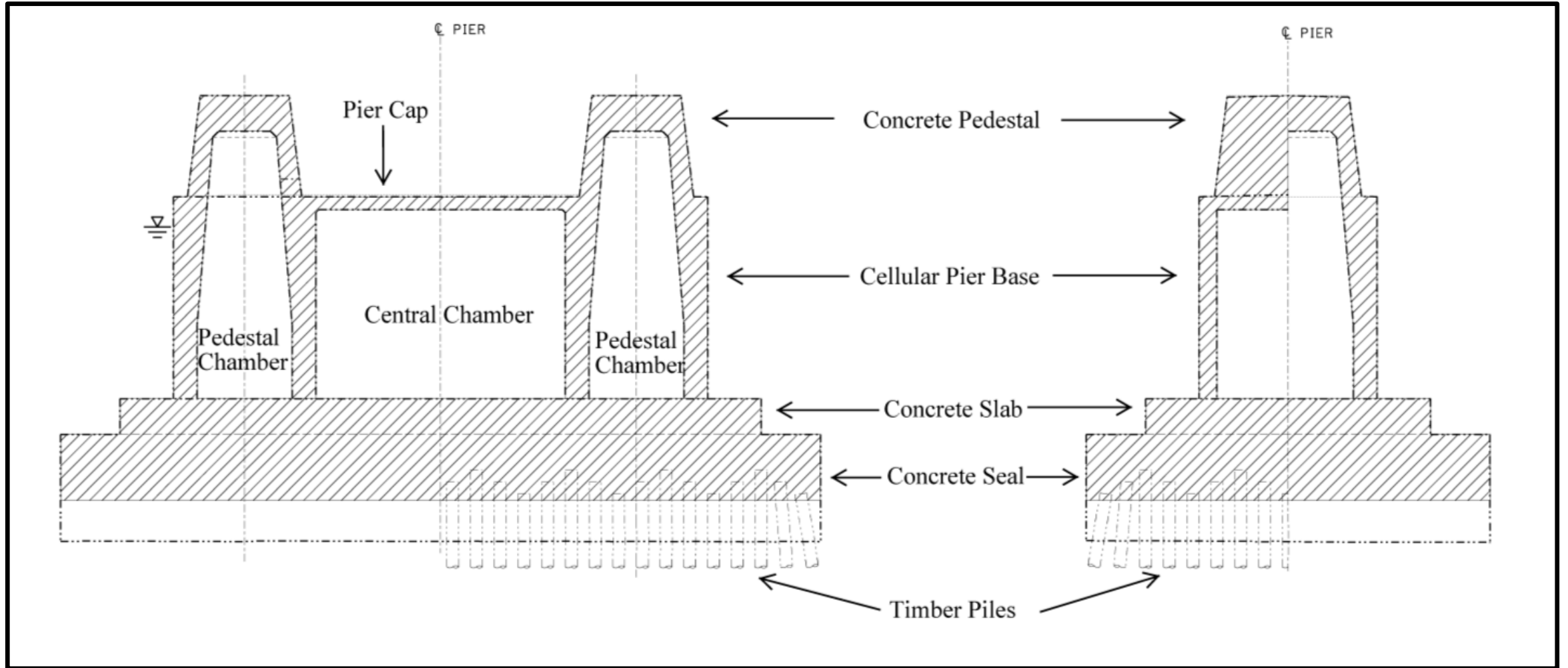


Figure 5. Typical Schematic for Piers E6 to E8 and E10 to E18

Table 3. Approximate Mudline and Removal Elevations of Original East Span Marine Foundations

Pier Number	Mudline Elevation (feet)	Required Removal Elevation (1.5 feet below mudline) (feet)	Planned Removal Limits (3 feet below mudline) (feet)
E4	-45.0	-46.5	-48.0
E5	-47.5	-49.0	-50.5
E6	-40.0	-41.5	-43.0
E7	-28.0	-29.5	-31.0
E8	-19.0	-20.5	-22.0
E9	-17.5	-19.0	-20.5
E10	-18.0	-19.5	-21.0
E11	-14.0	-15.5	-17.0
E12	-14.0	-15.5	-17.0
E13	-14.0	-15.5	-17.0
E14	-15.0	-16.5	-18.0
E15	-12.5	-14.0	-15.5
E16	-12.5	-14.0	-15.5
E17	-12.5	-14.0	-15.5
E18	-12.5	-14.0	-15.5

NOTE: All elevations use National Geodetic Vertical Datum 1929