



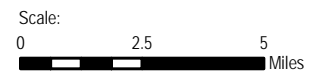


Figure 1
Project Area

Legend

-  County Boundary
-  City Boundary
-  State Park
-  Waterbody



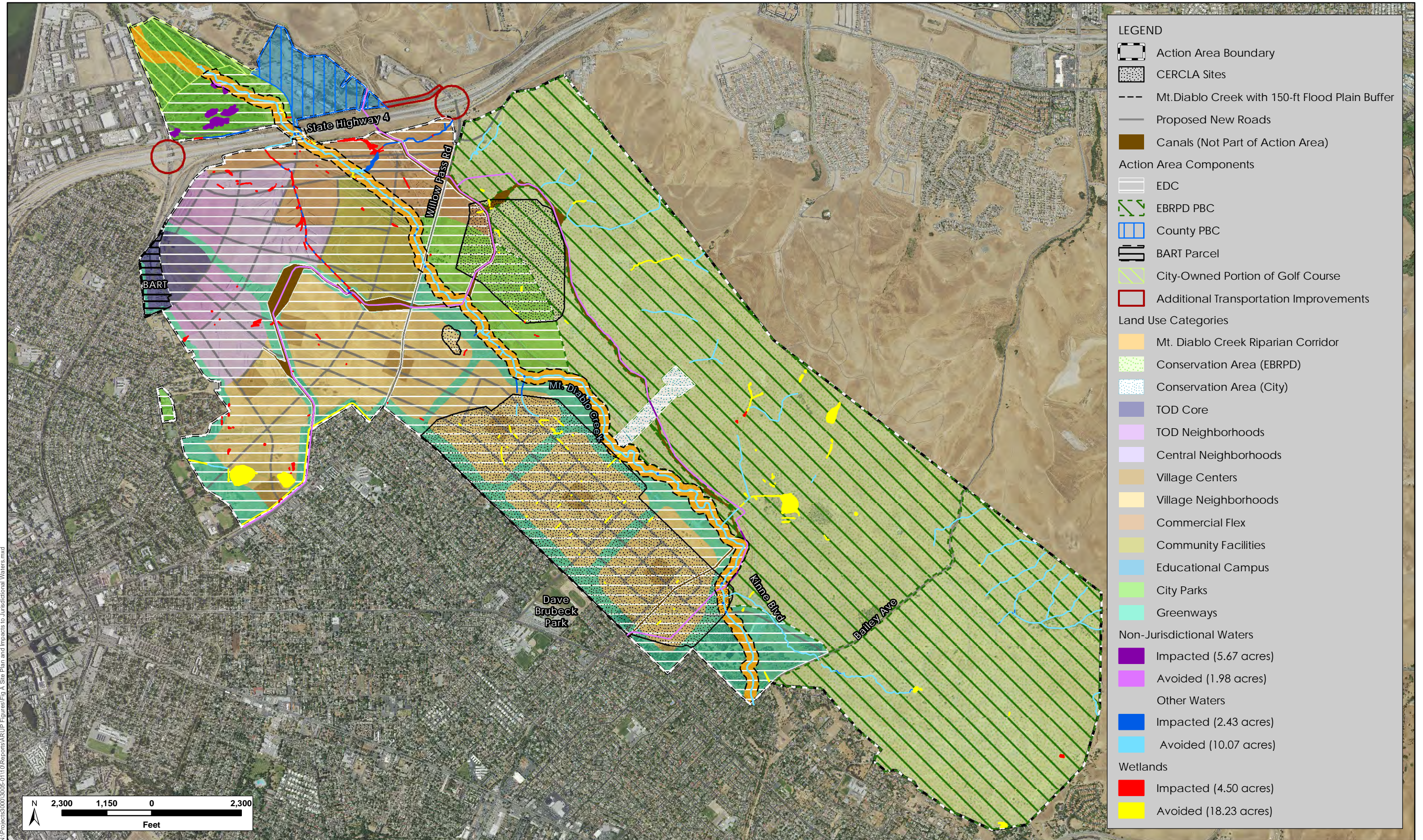
Source: ESRI 2010; NAIP 2012.



Figure 2. Waters of the U.S.

Areas with Waters of the U.S. Characteristics		Other Waters		Wetlands	
Name	Area (Acres)	Name	Area (Acres)	Name	Area (Acres)
W1	0.015	W1	0.015	W1	0.015
W2	0.015	W2	0.015	W2	0.015
W3	0.015	W3	0.015	W3	0.015
W4	0.015	W4	0.015	W4	0.015
W5	0.015	W5	0.015	W5	0.015
W6	0.015	W6	0.015	W6	0.015
W7	0.015	W7	0.015	W7	0.015
W8	0.015	W8	0.015	W8	0.015
W9	0.015	W9	0.015	W9	0.015
W10	0.015	W10	0.015	W10	0.015
W11	0.015	W11	0.015	W11	0.015
W12	0.015	W12	0.015	W12	0.015
W13	0.015	W13	0.015	W13	0.015
W14	0.015	W14	0.015	W14	0.015
W15	0.015	W15	0.015	W15	0.015
W16	0.015	W16	0.015	W16	0.015
W17	0.015	W17	0.015	W17	0.015
W18	0.015	W18	0.015	W18	0.015
W19	0.015	W19	0.015	W19	0.015
W20	0.015	W20	0.015	W20	0.015
W21	0.015	W21	0.015	W21	0.015
W22	0.015	W22	0.015	W22	0.015
W23	0.015	W23	0.015	W23	0.015
W24	0.015	W24	0.015	W24	0.015
W25	0.015	W25	0.015	W25	0.015
W26	0.015	W26	0.015	W26	0.015
W27	0.015	W27	0.015	W27	0.015
W28	0.015	W28	0.015	W28	0.015
W29	0.015	W29	0.015	W29	0.015
W30	0.015	W30	0.015	W30	0.015
W31	0.015	W31	0.015	W31	0.015
W32	0.015	W32	0.015	W32	0.015
W33	0.015	W33	0.015	W33	0.015
W34	0.015	W34	0.015	W34	0.015
W35	0.015	W35	0.015	W35	0.015
W36	0.015	W36	0.015	W36	0.015
W37	0.015	W37	0.015	W37	0.015
W38	0.015	W38	0.015	W38	0.015
W39	0.015	W39	0.015	W39	0.015
W40	0.015	W40	0.015	W40	0.015
W41	0.015	W41	0.015	W41	0.015
W42	0.015	W42	0.015	W42	0.015
W43	0.015	W43	0.015	W43	0.015
W44	0.015	W44	0.015	W44	0.015
W45	0.015	W45	0.015	W45	0.015
W46	0.015	W46	0.015	W46	0.015
W47	0.015	W47	0.015	W47	0.015
W48	0.015	W48	0.015	W48	0.015
W49	0.015	W49	0.015	W49	0.015
W50	0.015	W50	0.015	W50	0.015
W51	0.015	W51	0.015	W51	0.015
W52	0.015	W52	0.015	W52	0.015
W53	0.015	W53	0.015	W53	0.015
W54	0.015	W54	0.015	W54	0.015
W55	0.015	W55	0.015	W55	0.015
W56	0.015	W56	0.015	W56	0.015
W57	0.015	W57	0.015	W57	0.015
W58	0.015	W58	0.015	W58	0.015
W59	0.015	W59	0.015	W59	0.015
W60	0.015	W60	0.015	W60	0.015
W61	0.015	W61	0.015	W61	0.015
W62	0.015	W62	0.015	W62	0.015
W63	0.015	W63	0.015	W63	0.015
W64	0.015	W64	0.015	W64	0.015
W65	0.015	W65	0.015	W65	0.015
W66	0.015	W66	0.015	W66	0.015
W67	0.015	W67	0.015	W67	0.015
W68	0.015	W68	0.015	W68	0.015
W69	0.015	W69	0.015	W69	0.015
W70	0.015	W70	0.015	W70	0.015
W71	0.015	W71	0.015	W71	0.015
W72	0.015	W72	0.015	W72	0.015
W73	0.015	W73	0.015	W73	0.015
W74	0.015	W74	0.015	W74	0.015
W75	0.015	W75	0.015	W75	0.015
W76	0.015	W76	0.015	W76	0.015
W77	0.015	W77	0.015	W77	0.015
W78	0.015	W78	0.015	W78	0.015
W79	0.015	W79	0.015	W79	0.015
W80	0.015	W80	0.015	W80	0.015
W81	0.015	W81	0.015	W81	0.015
W82	0.015	W82	0.015	W82	0.015
W83	0.015	W83	0.015	W83	0.015
W84	0.015	W84	0.015	W84	0.015
W85	0.015	W85	0.015	W85	0.015
W86	0.015	W86	0.015	W86	0.015
W87	0.015	W87	0.015	W87	0.015
W88	0.015	W88	0.015	W88	0.015
W89	0.015	W89	0.015	W89	0.015

Figure 5: Preliminary Identification of Waters of the U.S.
Concord Community Reuse Plan - ID of Waters (1005-02)
May 2016



N:\Projects\3000\3005-0110\Reports\ARUP_Figures\Fig 3 Site Plan and Impacts to Jurisdictional Waters.mxd

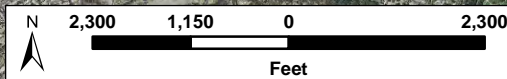
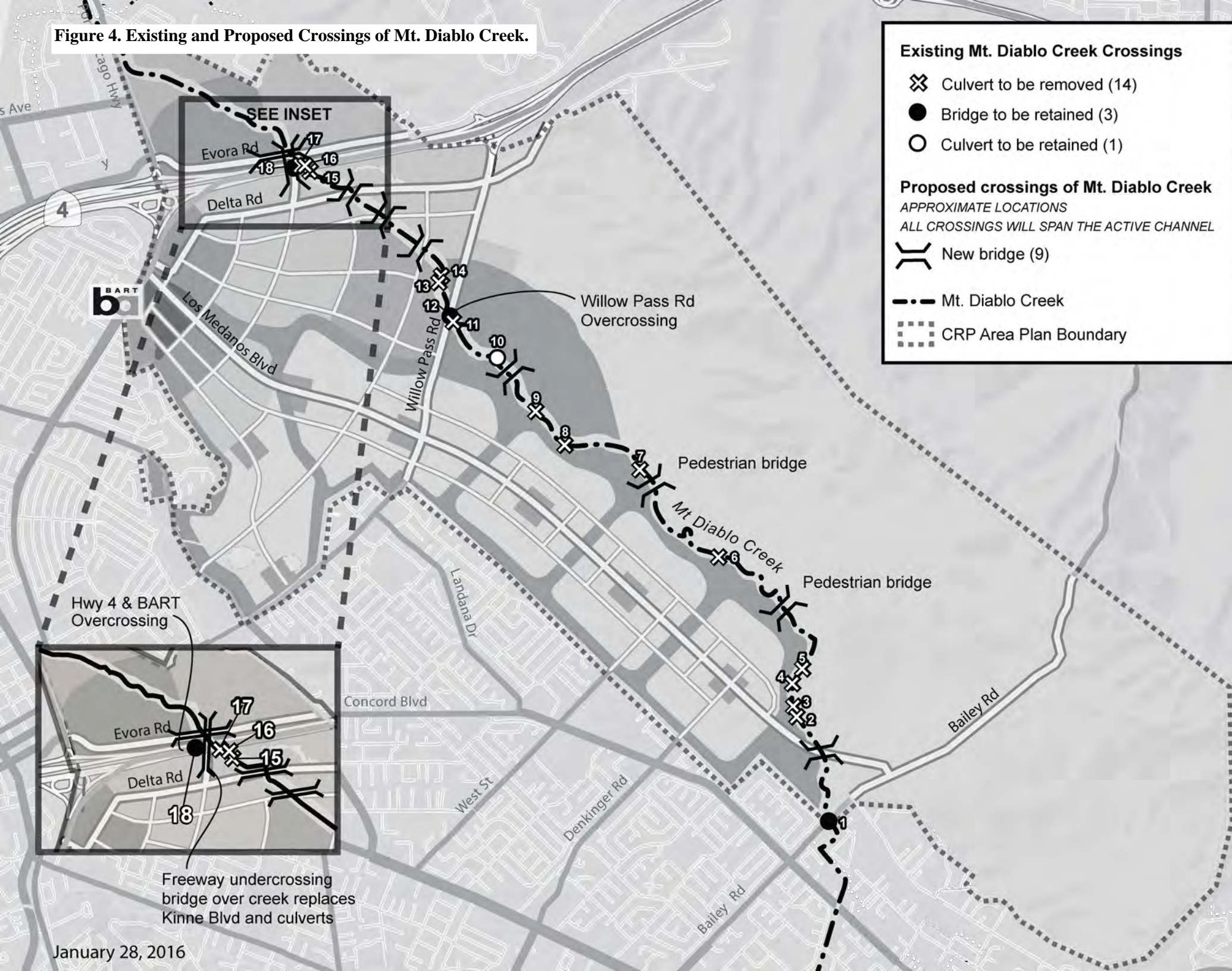


Figure 3. Site Plan and Impacts to Jurisdictional Waters
Disposal and Reuse of the Former Naval Weapons Station Seal Beach, Detachment Concord
December 2015

Figure 4. Existing and Proposed Crossings of Mt. Diablo Creek.



Existing Mt. Diablo Creek Crossings

- ⊗ Culvert to be removed (14)
- Bridge to be retained (3)
- Culvert to be retained (1)

Proposed crossings of Mt. Diablo Creek

APPROXIMATE LOCATIONS
ALL CROSSINGS WILL SPAN THE ACTIVE CHANNEL

- ⌢ New bridge (9)
- Mt. Diablo Creek
- ⋯ CRP Area Plan Boundary

SEE INSET

Freeway undercrossing bridge over creek replaces Kinne Blvd and culverts

Hwy 4 & BART Overcrossing

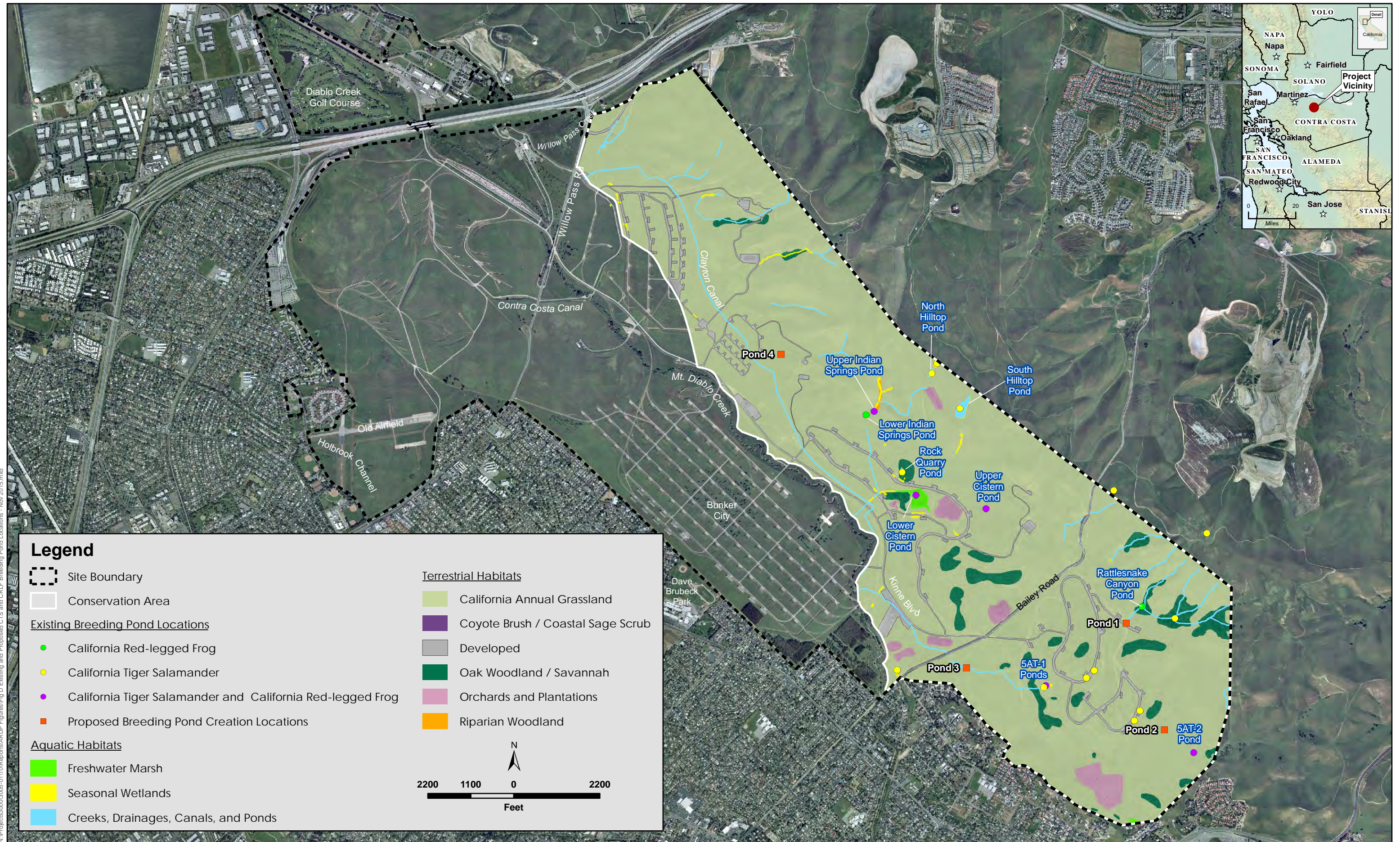
Willow Pass Rd Overcrossing

Pedestrian bridge

Pedestrian bridge



Figure 5. Location of Existing and Potential Wetlands
 Disposal and Reuse of the Former Naval Weapons Station
 Seal Beach, Detachment Concord
 February 2016



N:\Projects\000\3005-0110\Reports\ARUP_Figures\Fig D Existing and Proposed CTS and CRLF Breeding Pond Locations - Nov 2015.mxd

Figure 6. Existing and Proposed California Tiger Salamander and California Red-legged Frog Breeding Pond Locations Disposal and Reuse of the Former Naval Weapons Station Seal Beach, Detachment Concord December 2015