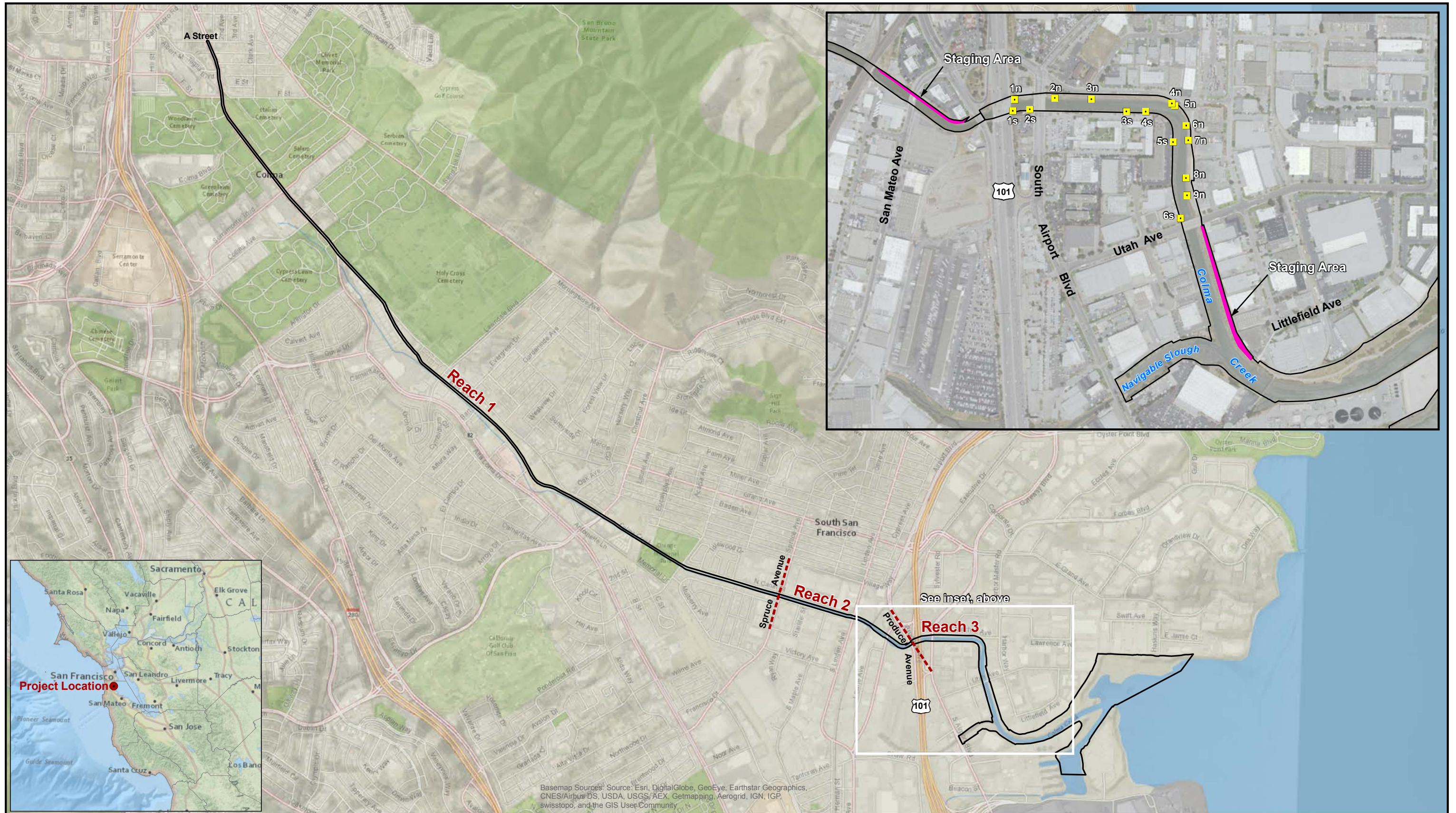




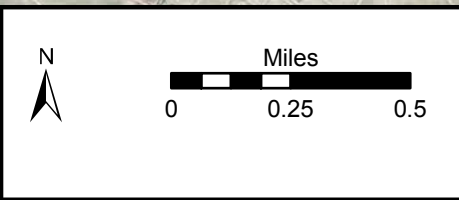
Watershed Boundary
(Drainage Area = 16.6 mi²)

SFF Weather Station

Figure 1. Colma Creek watershed.



Prepared by:



- Project Area
- Reach Break
- Culvert

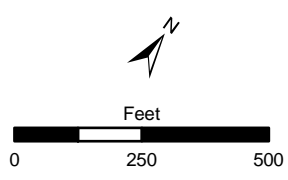
Colma Creek
 Flood Control Maintenance Project
Figure 2
 Project Area

Basemap and Imagery Sources: Source: Esri, DigitalGlobe, GeoEye, Earthstar Geographics, CNES/Airbus DS, USDA, USGS, AEX, Getmapping, Aerogrid, IGN, IGP, swisstopo, and the GIS User Community

C:\Users\GIS\Documents\ArcGIS\PROJECTS\14012_ColmaCreek\mxd\Figure_2b_Reach2Sediment.mxd 10/7/2015 PG



Figure 3
Reach 2 with
Sediment Depth



Sediment Depth (feet)

0 - 0.5	1.5 - 2
0.5 - 1	2 - 2.5
1 - 1.5	2.5 - 4.75

Project Area



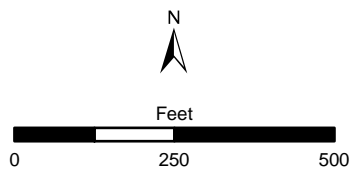
Colma Creek
Flood Control Maintenance Project

Basemap and Imagery Sources: Source: Esri, DigitalGlobe, GeoEye, i-cubed, Earthstar Geographics, CNES/Airbus DS, USDA, USGS, AEX, Getmapping, Aerogrid, IGN, IGP, swisstopo, and the GIS User Community



C:\Users\GIS\Documents\ArcGIS\PROJECTS\14012_ColmaCreek\mxd\Figure_2c_Culverts.mxd 10/1/2015 PG

Figure 4
Reach 3 Culverts



□ Project Area
■ Culvert



Colma Creek
Flood Control Maintenance Project