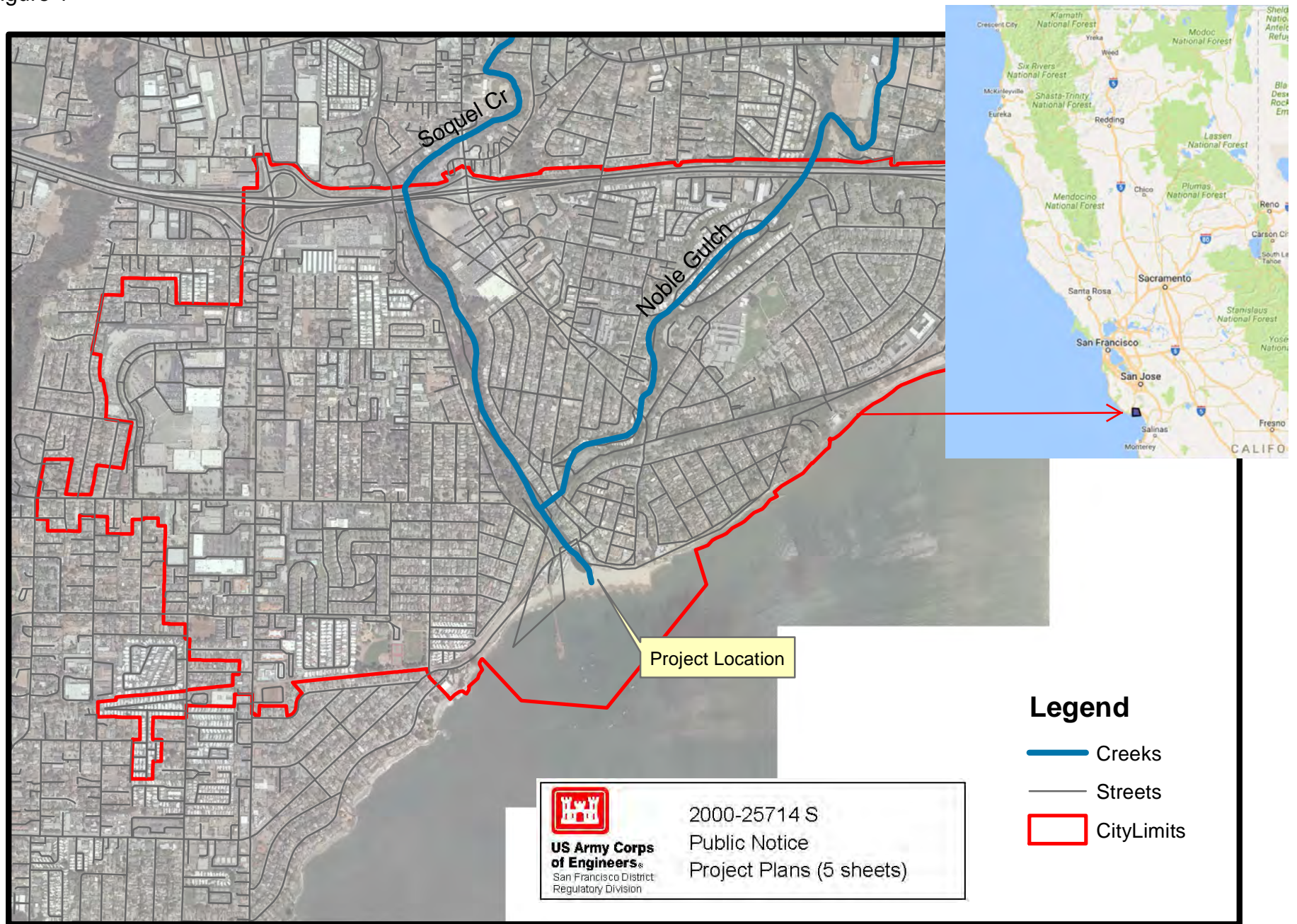


Soquel Creek - Vicinity Map

Figure 1



Finished Beach & Lagoon

Figure 2



1 inch = 200 feet



City of Capitola

Figure 3



5/2012

Emerald St

Jewel St

Prospect Ave

Cliff Dr

Wharf Rd

Stockton Ave

Esplanade

Lawn Way

Monterey Ave

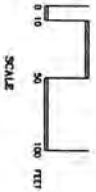
Capitola Beach

Grading Plan - Typical Borrow Areas

Figure 4

IRPROSE: ANNUAL LAGOON CLOSURE
& BEACH GRADING PER
SOQUEL CREEK MANAGEMENT PLAN.
TUM: NCV0

PLAN VIEW



CITY OF CAPITOLA
420 CAPITOLA AVENUE
CAPITOLA CA 95010

CAPITOLA BEACH GRADING PLAN
EXISTING SITE TOPOGRAPHY

IN: CAPITOLA BEACH/SOQUEL CREEK
AT: MONTEREY BAY
COUNTY OF: SANTA CRUZ STATE: CA
APPLICATION BY: CITY OF CAPITOLA
SHEET 1 OF 3 DATE: 12-01-00

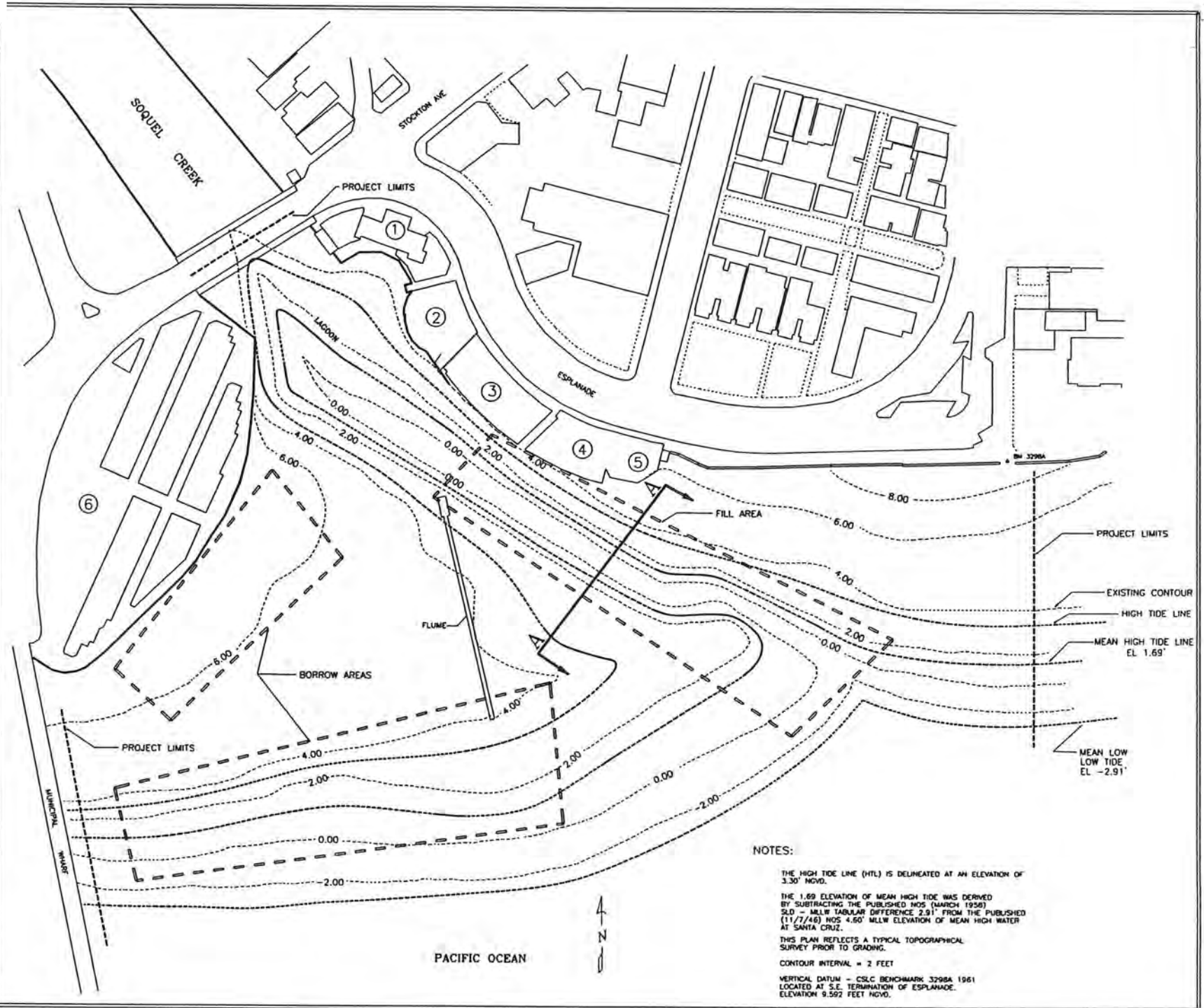
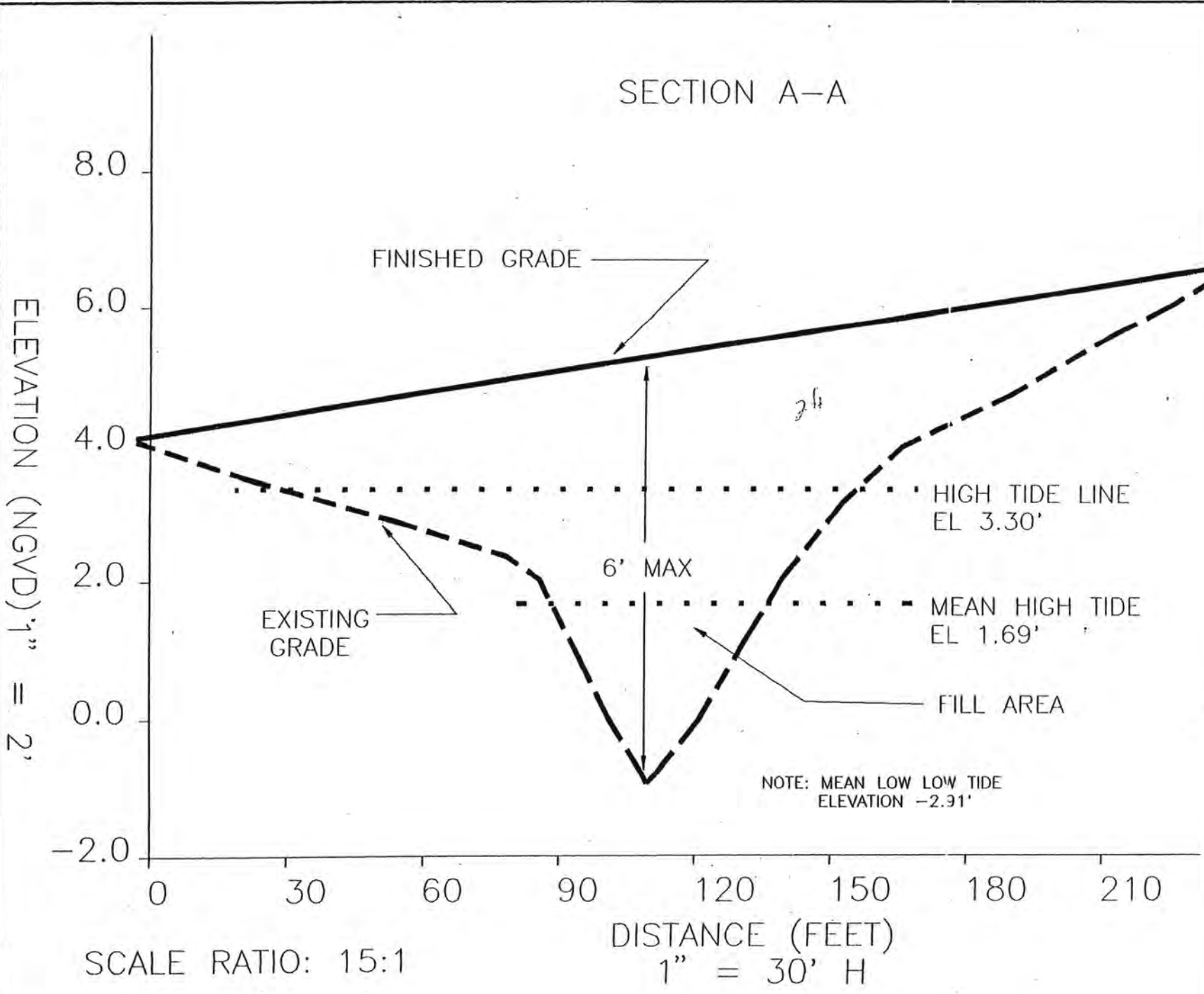


Figure 5



PURPOSE: ANNUAL LAGOON CLOSURE & BEACH GRADING PER SOQUEL CREEK MANAGEMENT PLAN.
 DATUM: NGVD

SECTION VIEW

CITY OF CAPITOLA
 420 CAPITOLA AVENUE
 CAPITOLA, CA 95010

CAPITOLA BEACH GRADING PLAN

IN: CAPITOLA BEACH/SOQUEL CREEK
 AT: MONTEREY BAY
 COUNTY OF: SANTA CRUZ STATE: CA
 APPLICATION BY: CITY OF CAPITOLA

DATE: 7/11/07