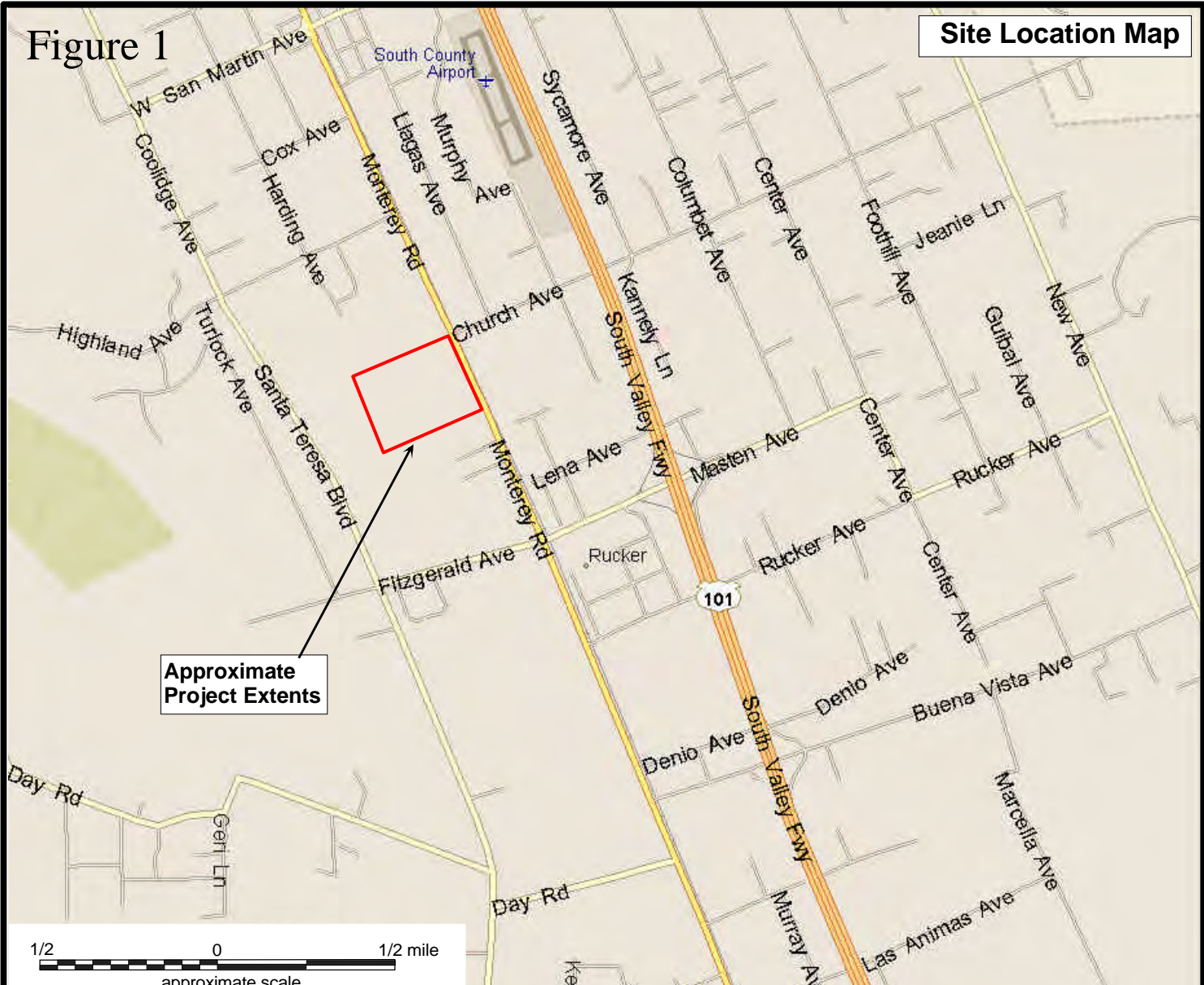
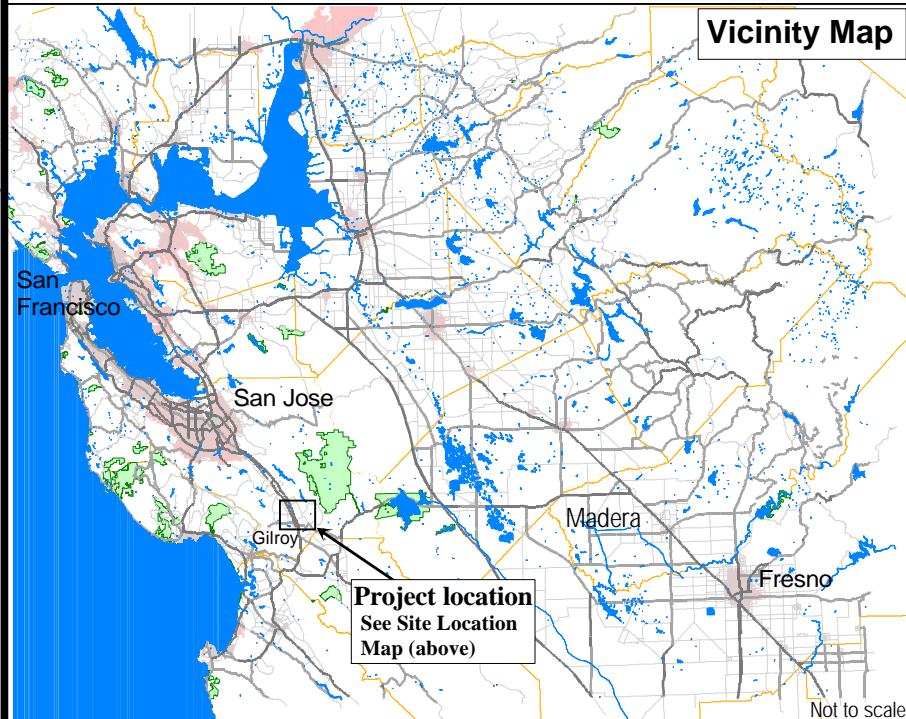


Figure 1

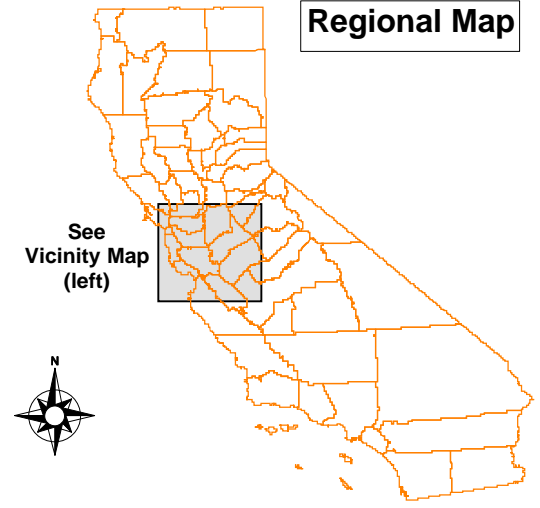
Site Location Map



Vicinity Map

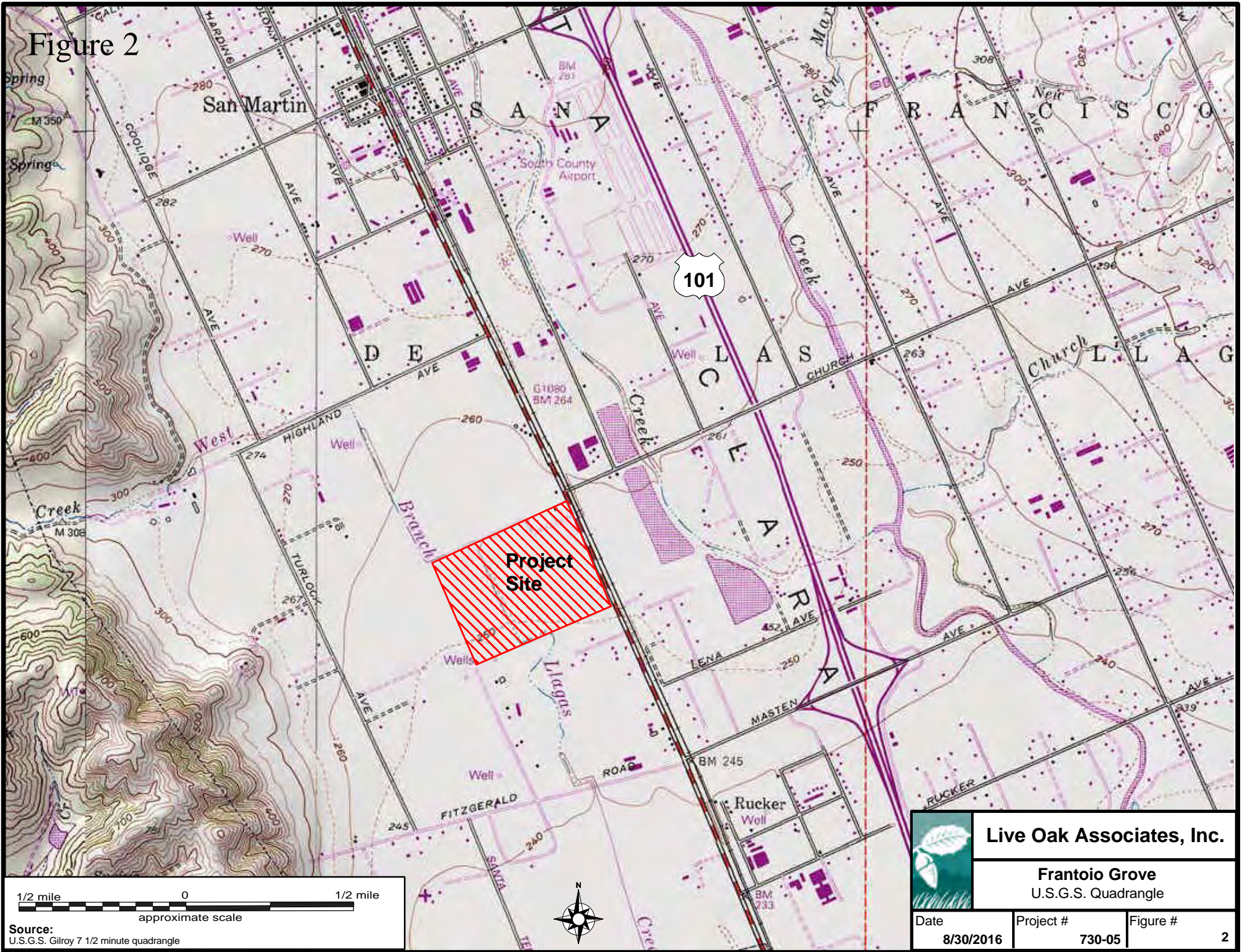


Regional Map



	<b>Live Oak Associates, Inc.</b>		
	Frantio Grove Site / Vicinity Map		
Date	Project #	Figure #	
8/30/2016	730-05		1

Figure 2



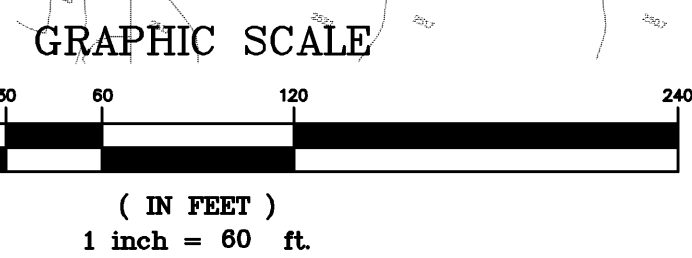
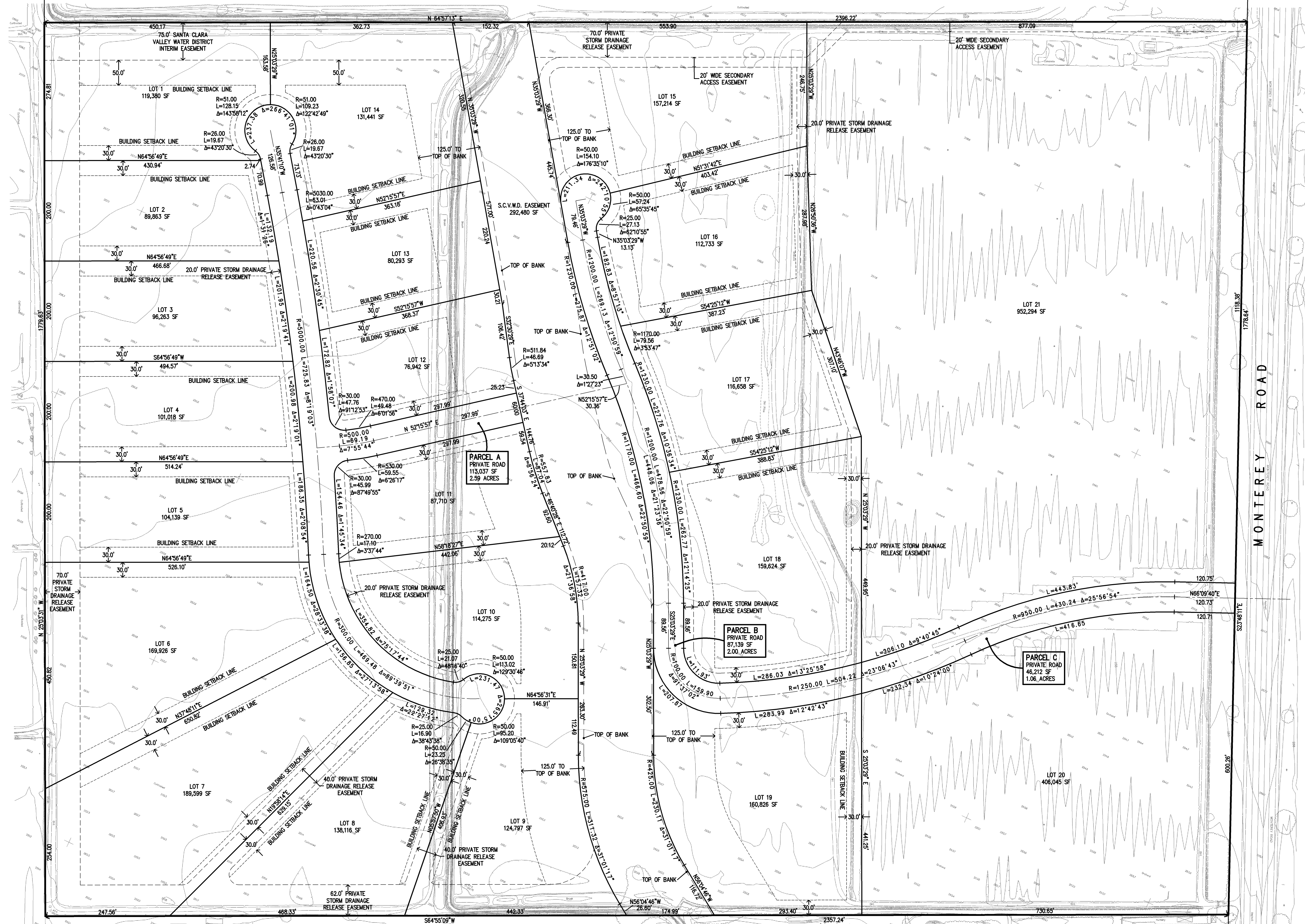
Live Oak Associates, Inc.

Frantoio Grove  
U.S.G.S. Quadrangle

Date	Project #	Figure #
8/30/2016	730-05	2

Source:  
U.S.G.S. Gilroy 7 1/2 minute quadrangle

Figure 3



APPROVED FOR ISSUANCE  
REFER TO ENCROACHMENT AND/OR  
CONSTRUCTION PERMIT AND PLAN  
COVER SHEET FOR SPECIAL  
CONDITIONS AND PERMIT NUMBERS

PLAN # OF SHEET

REVISIONS:		
DATE	DESCRIPTION	BY:

**Hanna Brunetti**  
Civil Engineers • Land Surveyors •  
Construction Managers •  
Gilroy California (408) 842-2173

DATE: MAY 2015  
HORIZ. SCALE: 1"=60'  
VERT. SCALE: NONE  
DESIGNED BY: AW  
CHECKED BY: TM  
DRAWN BY: TM

REFERENCES

# Site Plan

UNINCORPORATED  
MAY 2015

Frantoio Grove Subdivision - 11811 Monterey Road, San Martin - apn 779-15-001

SANTA CLARA COUNTY  
CALIFORNIA

SHEET  
**3**  
OF 6  
JOB NO.  
**15001**

APPLICANT: MARTIN

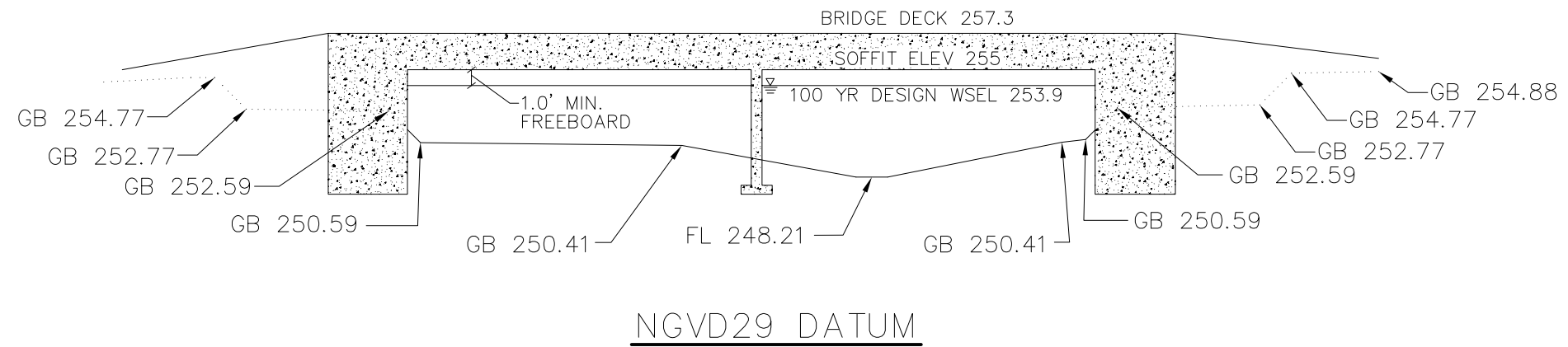
ROAD: 11811 MONTEREY ROAD

COUNTY FILE NO.:

JOB NO. 15001

THE USE OF THESE PLANS AND SPECIFICATIONS SHALL BE RESTRICTED TO THE ORIGINAL SITE FOR WHICH THEY WERE PREPARED AND PUBLICATION THEREOF IS EXPRESSLY LIMITED TO SUCH USE. REPRODUCTION OR PUBLICATION IN WHOLE OR PART, IS PROHIBITED. TITLE TO THE PLANS AND SPECIFICATIONS REMAINS IN THE ENGINEER WITHOUT PREJUDICE. VISUAL CONTACT WITH THESE PLANS AND SPECIFICATIONS SHALL CONSTITUTE PRIMA FACIE EVIDENCE OF THE ACCEPTANCE OF THESE RESTRICTIONS.

Figure 4

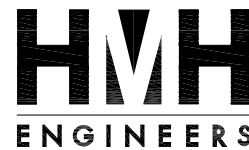


BRIDGE CROSS-SECTION

Scale: H 1"=20' V 1"=10'

Jeff Martin  
7888 Wren Avenue, Building B, #120  
Gilroy, Ca. 95020

Date: 12/18/08  
Scale: SEE DRAWING  
Designed: SRL  
Drawn: DSM  
Checked: SRL  
Proj. Engr: SRL  
File: BridgeXSection.dwg



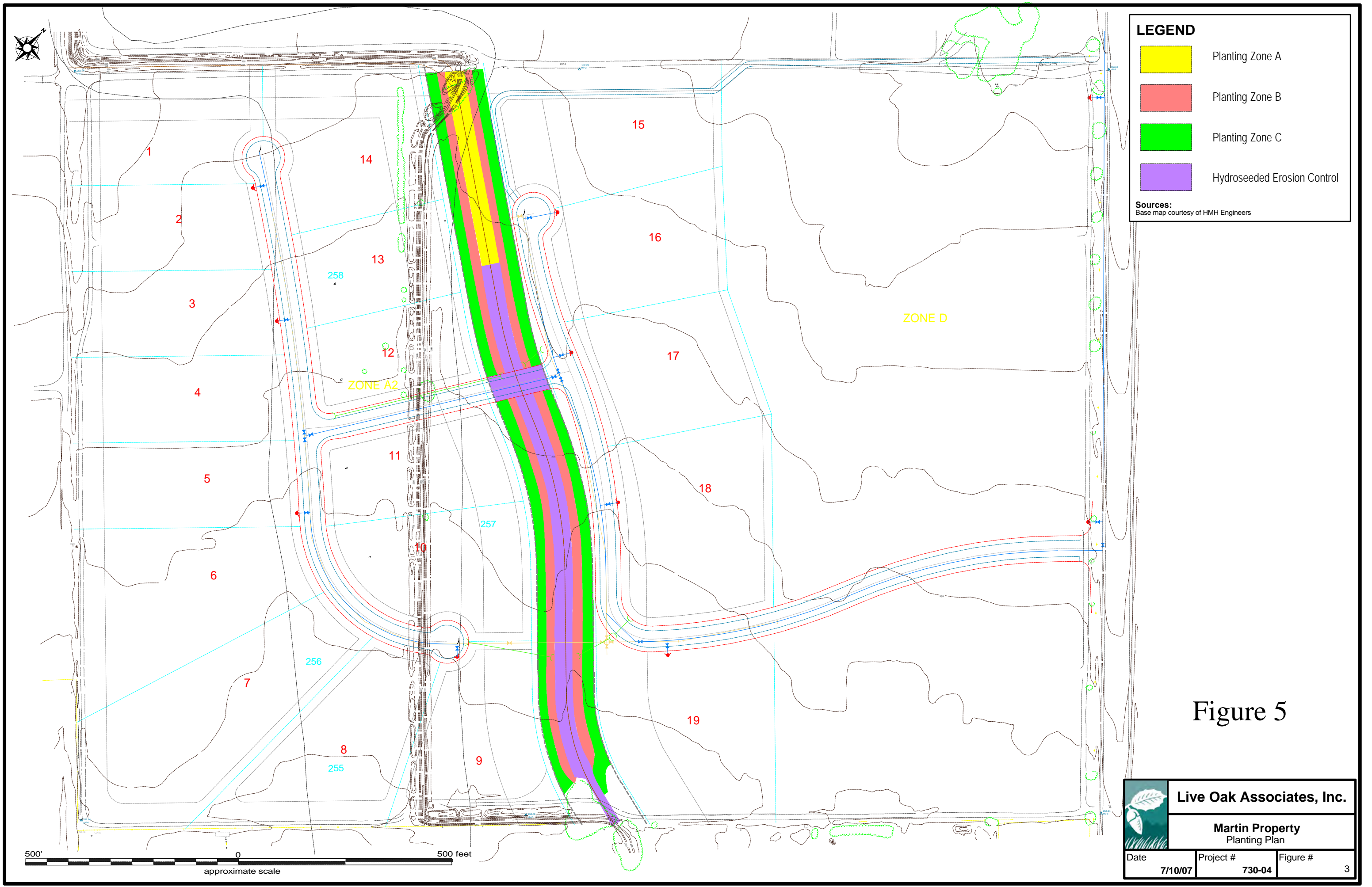
San Jose  
(408) 487-2200  
Gilroy  
(408) 846-0707  
www.hmh-engineers.com

San Martin

FRANTOIO GROVE  
TYPICAL CREEK SECTION AT  
PROPOSED BRIDGE

California

Sheet  
**1**  
Of 1 Sheets  
JOB NUMBER  
5017-01



**LEGEND**

- Planting Zone A
- Planting Zone B
- Planting Zone C
- Hydroseeded Erosion Control

**Sources:**  
Base map courtesy of HMM Engineers

Figure 5

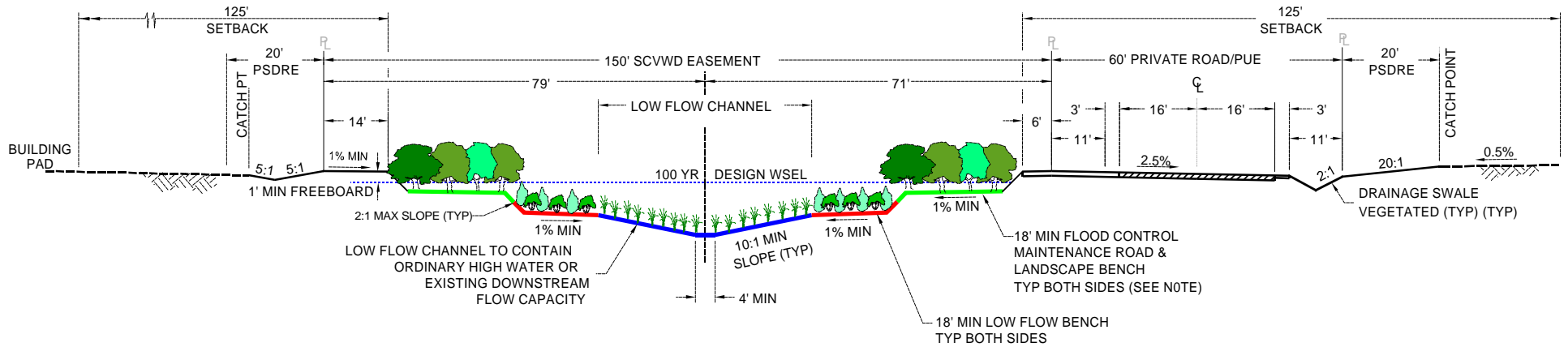
	<b>Live Oak Associates, Inc.</b>		
	<b>Martin Property Planting Plan</b>		
Date	Project #	Figure #	
7/10/07	730-04	3	

500' 0 500 feet  
approximate scale


# Figure 6


## TYPICAL CREEK SECTION AND PROPOSED FLOODWAY


NTS



### LEGEND Revegetation Zones


 A (Low-flow channel bed and bank)

 B (Low-flow bench)

 C (Upper bench and bank)

Sources:  
Profile drawing courtesy of HMH Engineers

NOTE: MAINTENANCE ROAD CRITERIA SHALL BE IN CONFORMANCE WITH SCVWD ENGINEERING POLICY & PROCEDURE No 3-410, DATED 3/1/1992

	<b>Live Oak Associates, Inc.</b>		
	<b>Martin Property</b> Creek Cross-section		
Date	Project #	Figure #	
7/11/07	730-04	4	