

LAT: 38.798611°
 LONG: -123.102778°

SOURCE: DeLorme Topo USA, 2002; AES, 2002

Figure 1. Location Map
 Cooley Ranch Project USACE File #284900N

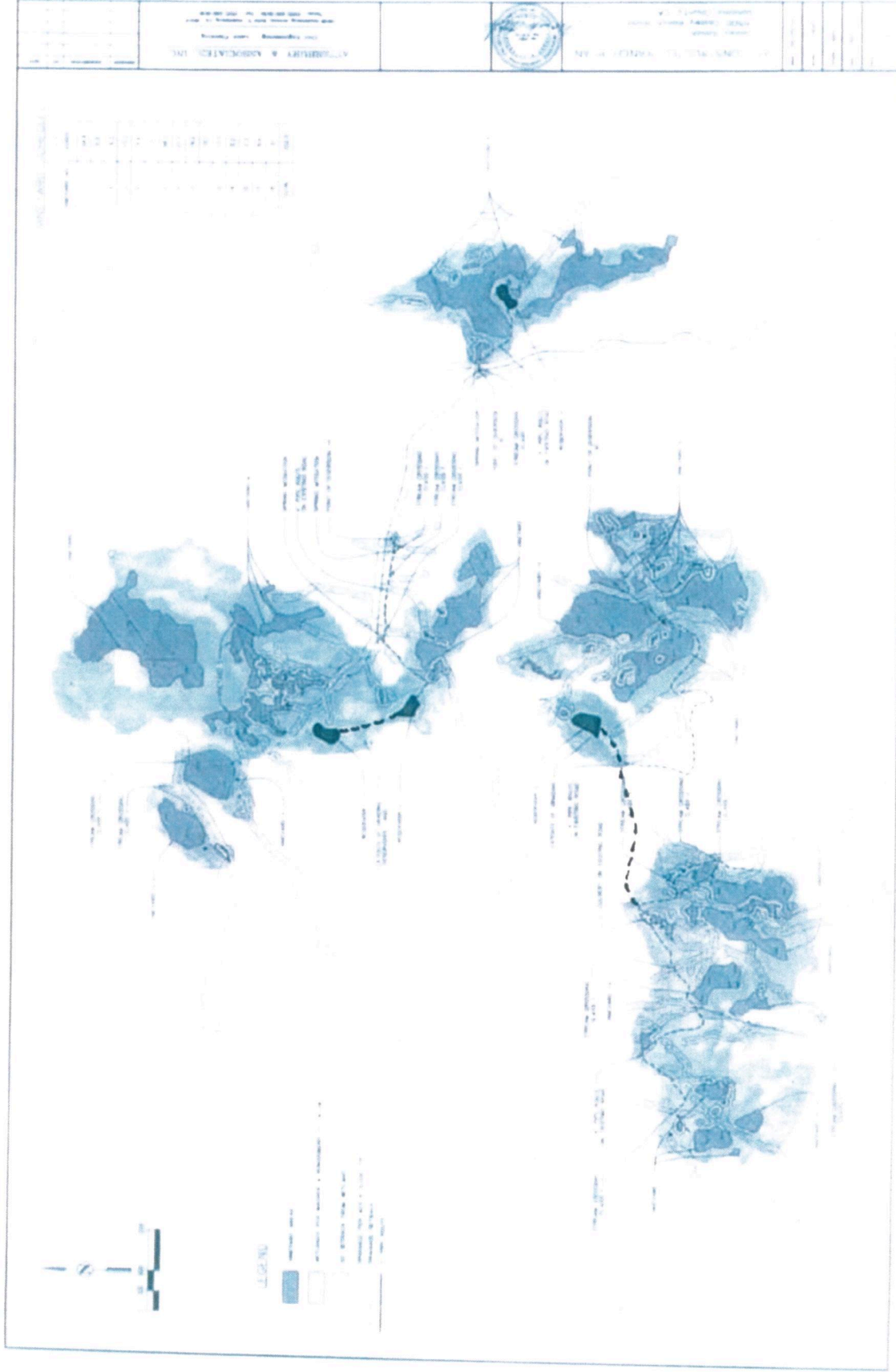
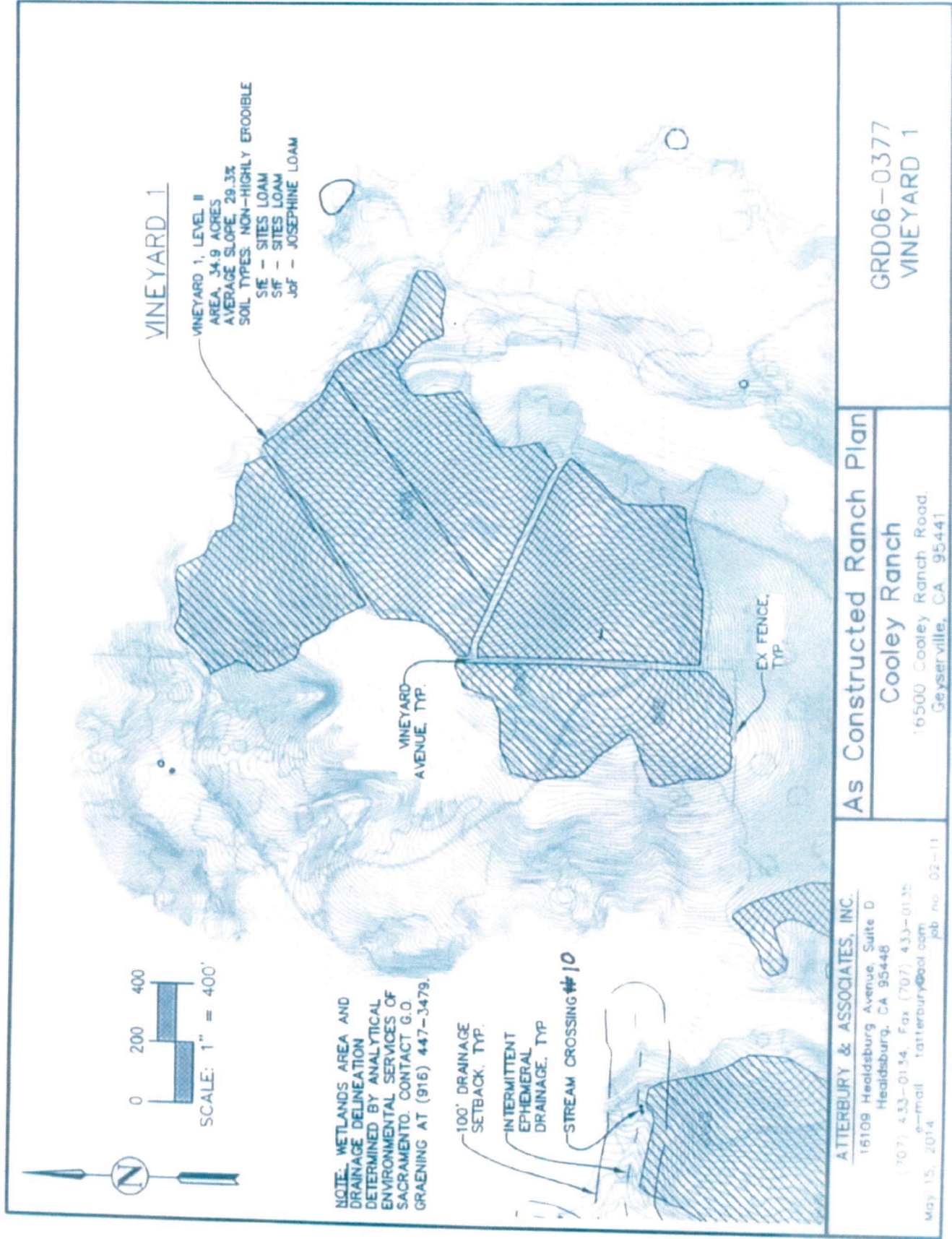


Figure 2. Cooley Ranch Project USACE File# 284900N



VINEYARD 1

VINEYARD 1, LEVEL II
 AREA, 34.9 ACRES
 AVERAGE SLOPE, 29.3%
 SOIL TYPES: NON-HIGHLY ERODIBLE
 SIF - SITES LOAM
 Jof - JOSEPHINE LOAM

NOTE: WETLANDS AREA AND DRAINAGE DELINEATION DETERMINED BY ANALYTICAL ENVIRONMENTAL SERVICES OF SACRAMENTO CONTACT G.O. GRAENING AT (916) 447-3479.

100' DRAINAGE SETBACK, TYP.
 INTERMITTENT EPHEMERAL DRAINAGE, TYP.
 STREAM CROSSING #10

VINEYARD AVENUE, TYP.

EX. FENCE, TYP.

As Constructed Ranch Plan

Cooley Ranch

16500 Cooley Ranch Road,
 Geyserville, CA 95441

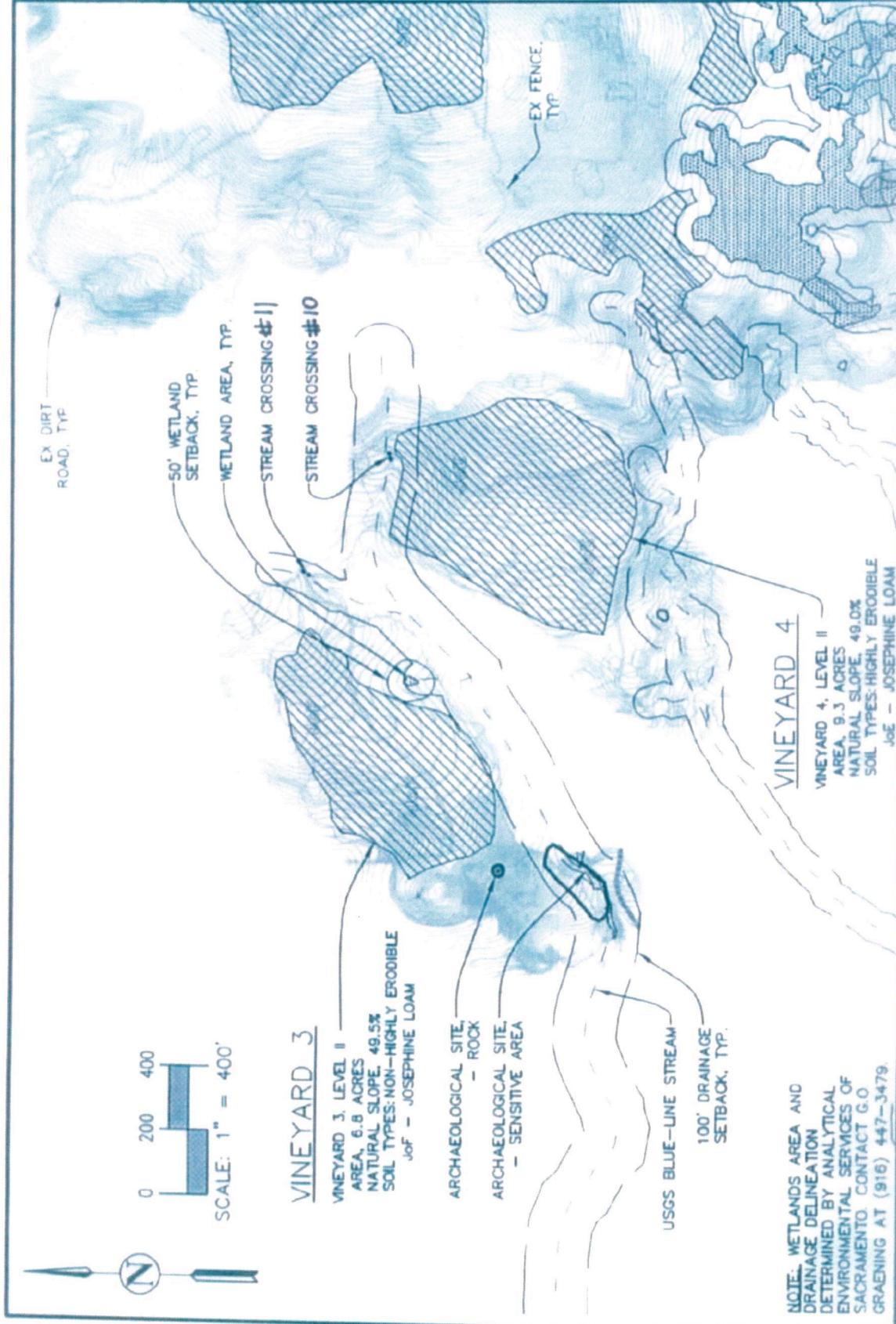
ATTERBURY & ASSOCIATES, INC.

15109 Healdsburg Avenue, Suite D
 Healdsburg, CA 95448

(707) 433-0134, Fax (707) 433-0135
 e-mail: tatterbury@aol.com
 May 15, 2014 job no. 02-11

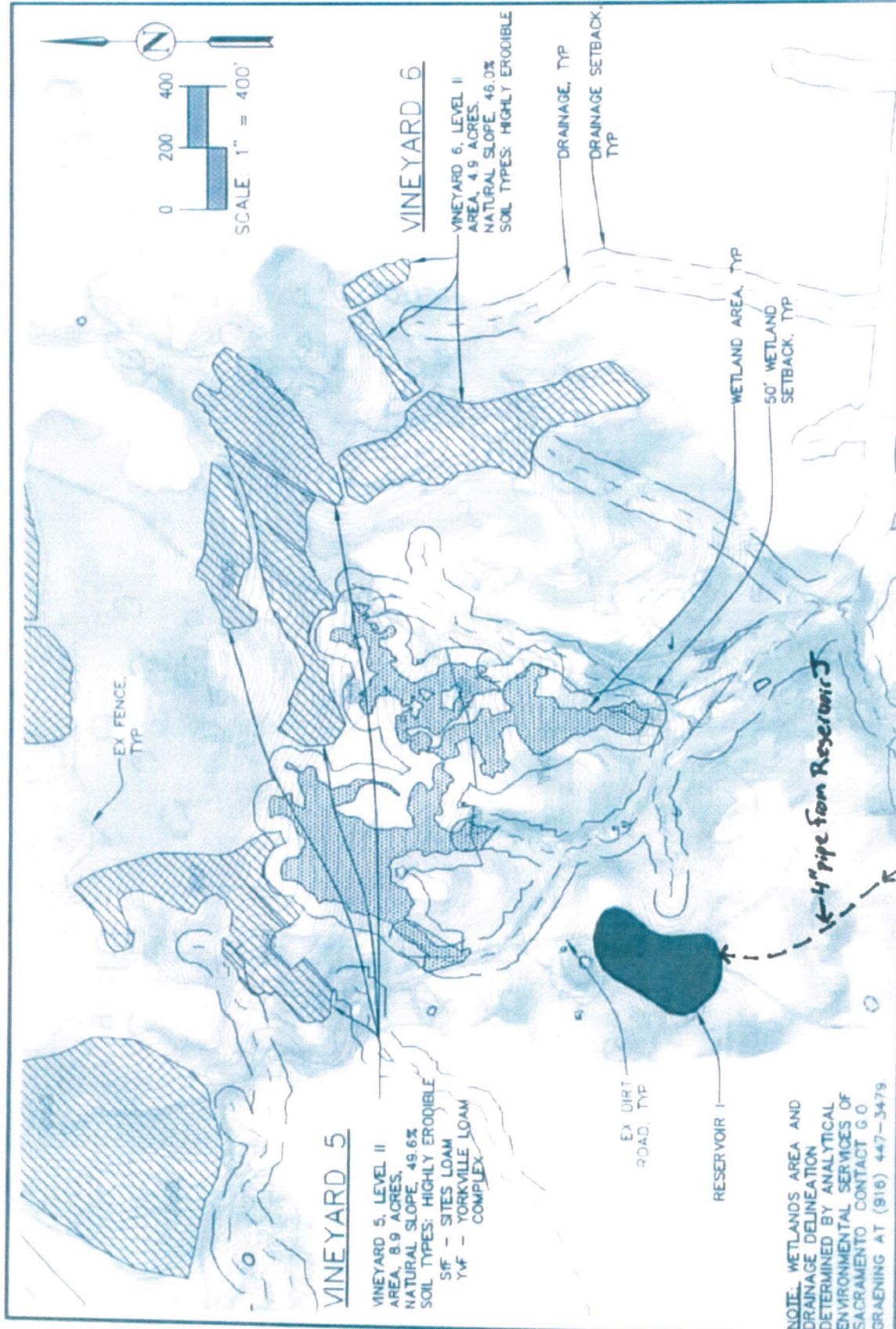
GRD06-0377
 VINEYARD 1

Figure 3. Cooley Ranch Project USACE File# 284900N



<p>NOTE: WETLANDS AREA AND DRAINAGE DELINEATION DETERMINED BY ANALYTICAL ENVIRONMENTAL SERVICES OF SACRAMENTO. CONTACT G.O. GRAENING AT (916) 447-3479</p>		<p>GRD06-0377 VINEYARDS 3+4</p>
<p>ATTERBURY & ASSOCIATES, INC. 16109 Healdsburg Avenue, Suite D Healdsburg, CA 95448 (707) 433-0134, Fax (707) 433-0135 e-mail: tatterbury@aol.com May 15, 2014 job no. 02-11</p>		<p>As Constructed Ranch Plan</p>
<p>COOLEY RANCH 16500 Cooley Ranch Road Geyserville, CA 95441</p>		<p>Cooley Ranch</p>

Figure 4. Cooley Ranch Project USACE File# 289900N



<p>GRD06-0377 VINEYARD 5+6</p>	
<p>As Constructed Ranch Plan Cooley Ranch 16500 Cooley Ranch Road Geyserville, CA, 95441</p>	
<p>ATTERBURY & ASSOCIATES, INC. 16109 Healdsburg Avenue, Suite D Healdsburg, CA 95448 (707) 433-0134; Fax (707) 433-0135 e-mail: tatterbury@aol.com May 15, 2014 job no. 02-11</p>	<p>Figure 5. Cooley Ranch Project USACE File# 284900N</p>

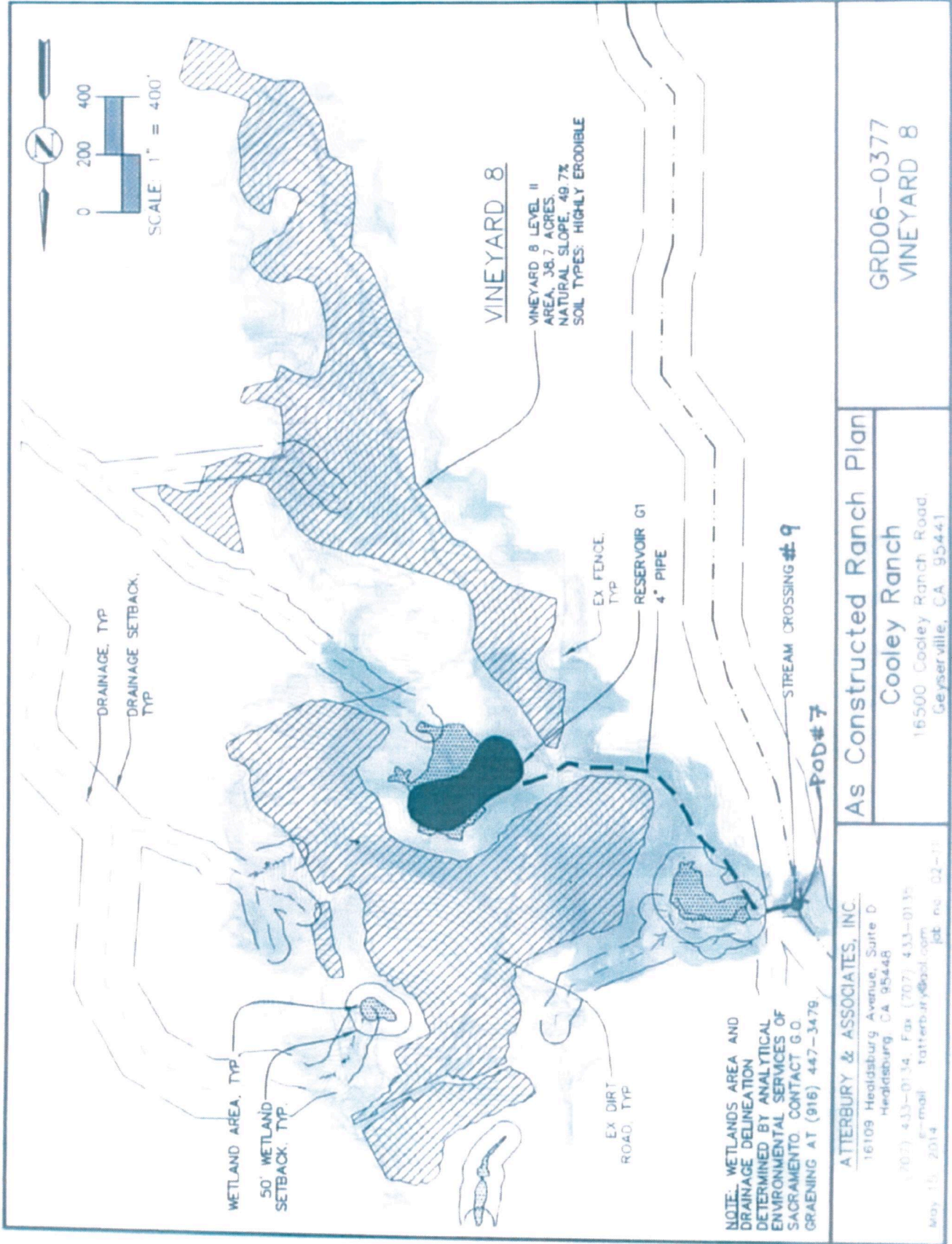


As Constructed Ranch Plan
Cooley Ranch
 16500 Cooley Ranch Road
 Geyserville, CA, 95441

ATTERBURY & ASSOCIATES, INC.
 16109 Healdsburg Avenue, Suite D
 Healdsburg, CA 95448
 (707) 433-0134, Fax (707) 433-0135
 e-mail: tatterbur@aol.com
 May 15, 2014 job no. 02-11

GRD06-0377
 VINEYARD 7

Figure 6. Cooley Ranch Project USACE File# 285900N



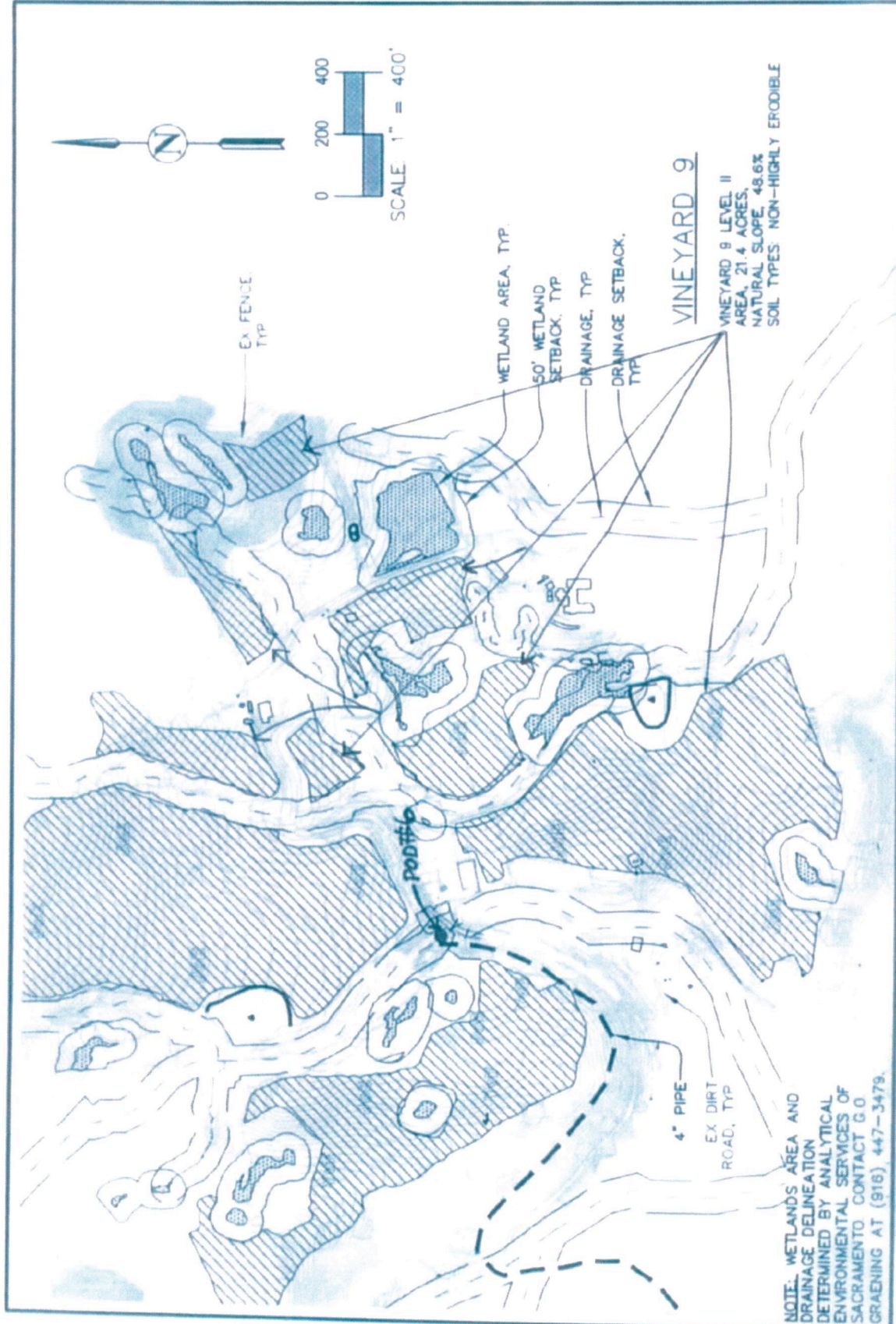
NOTE: WETLANDS AREA AND DRAINAGE DELINEATION DETERMINED BY ANALYTICAL ENVIRONMENTAL SERVICES OF SACRAMENTO CONTACT G.O. GRAENING AT (916) 447-3479.

ATTERBURY & ASSOCIATES, INC.
 16109 Healdsburg Avenue, Suite D
 Healdsburg, CA 95448
 (707) 433-0134, Fax (707) 433-0135
 e-mail: tatterbur@aol.com
 May 15, 2014 job no. 02-11

As Constructed Ranch Plan
 Cooley Ranch
 16500 Cooley Ranch Road,
 Geyserville, CA 95441

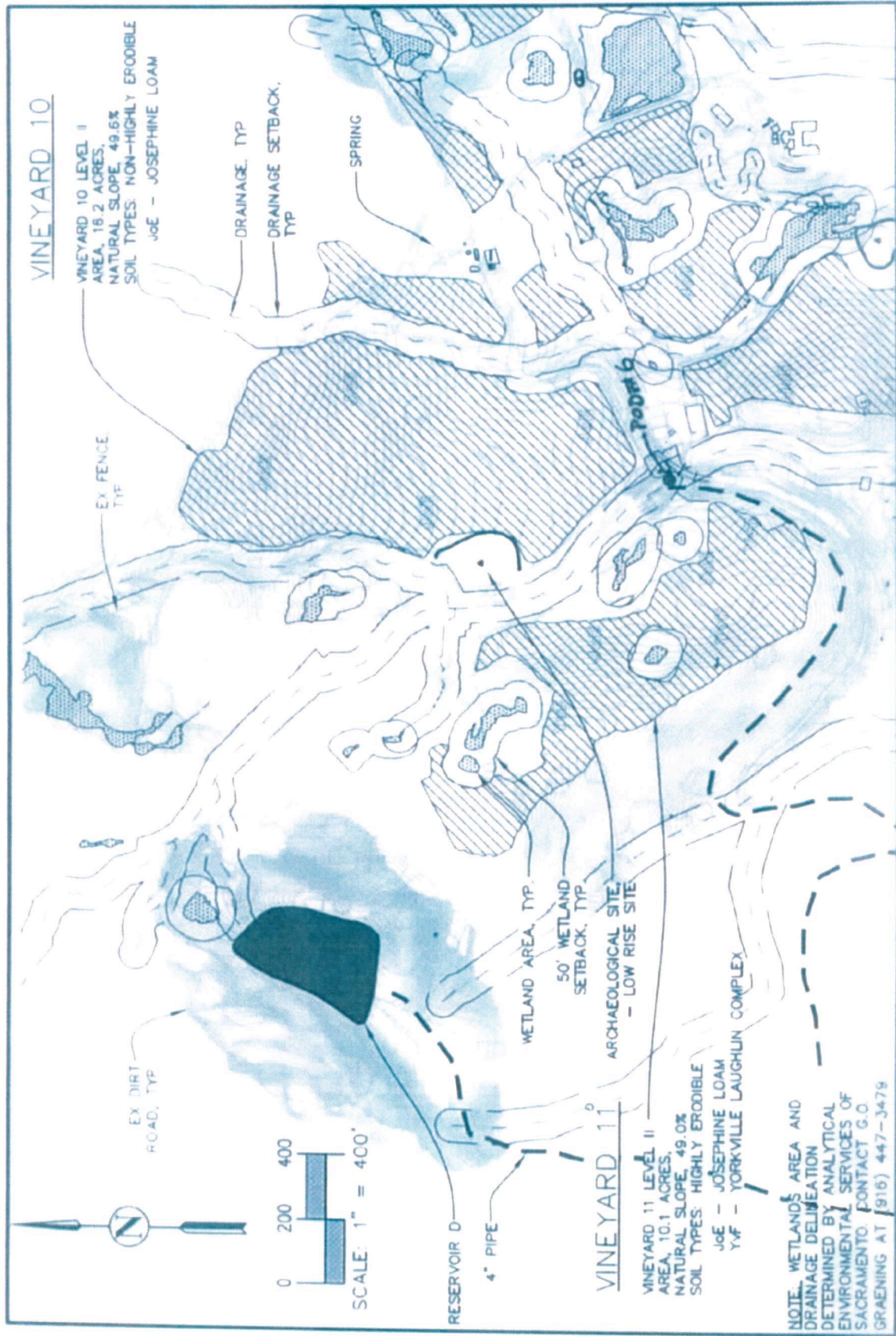
GRD06-0377
 VINEYARD 8

Figure 7. Cooley Ranch Project USACE File# 284900N



<p>NOTE: WETLANDS AREA AND DRAINAGE DELINEATION DETERMINED BY ANALYTICAL ENVIRONMENTAL SERVICES OF SACRAMENTO CONTACT G.O. GRAENING AT (916) 447-3479.</p>		<p>ATTORNEY & ASSOCIATES, INC. 16109 Heddsburg Avenue, Suite D Heddsburg, CA 95448 (707) 433-0134, Fax (707) 433-0135 e-mail: Tatterbury@aol.com May 15, 2014 job no. 02-11</p>	<p>As Constructed Ranch Plan Cooley Ranch 16500 Cooley Ranch Road, Geyserville, CA 95441</p>	<p>GRD06-0377 VINEYARD 9</p>
--	--	--	---	---

Figure 8. Cooley Ranch Project USACE File# 284900N



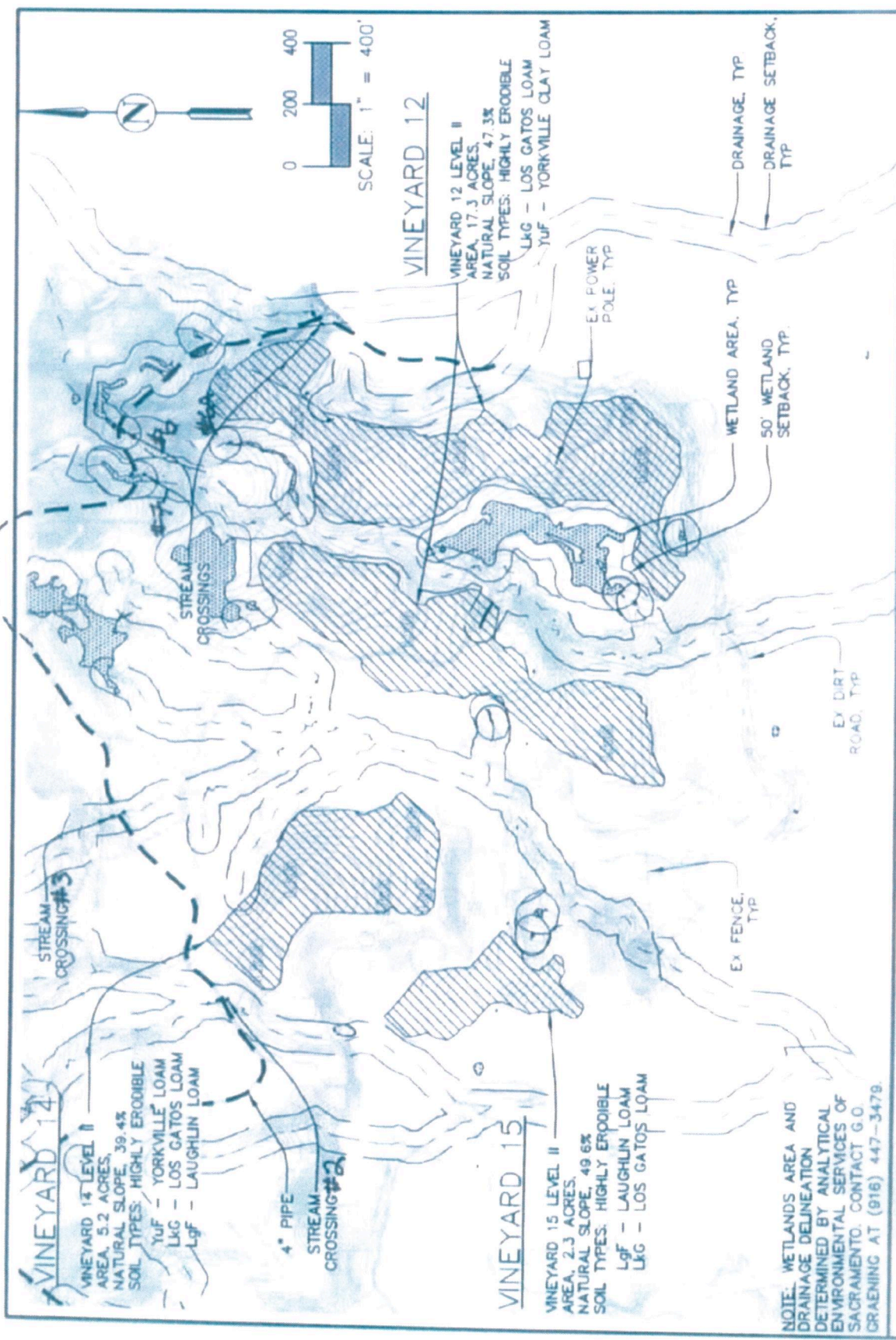
As Constructed Ranch Plan
 Cooley Ranch
 16,500 Cooley Ranch Road,
 Geyserville, CA 95441

ATTERBURY & ASSOCIATES, INC.
 16109 Healdsburg Avenue, Suite D
 Healdsburg, CA 95448
 (707) 433-0134 Fax (707) 433-0135
 e-mail: tatterbury@aol.com
 May 5, 2014 job no. 02-11

GRD06-0377
 VINEYARD 10+11

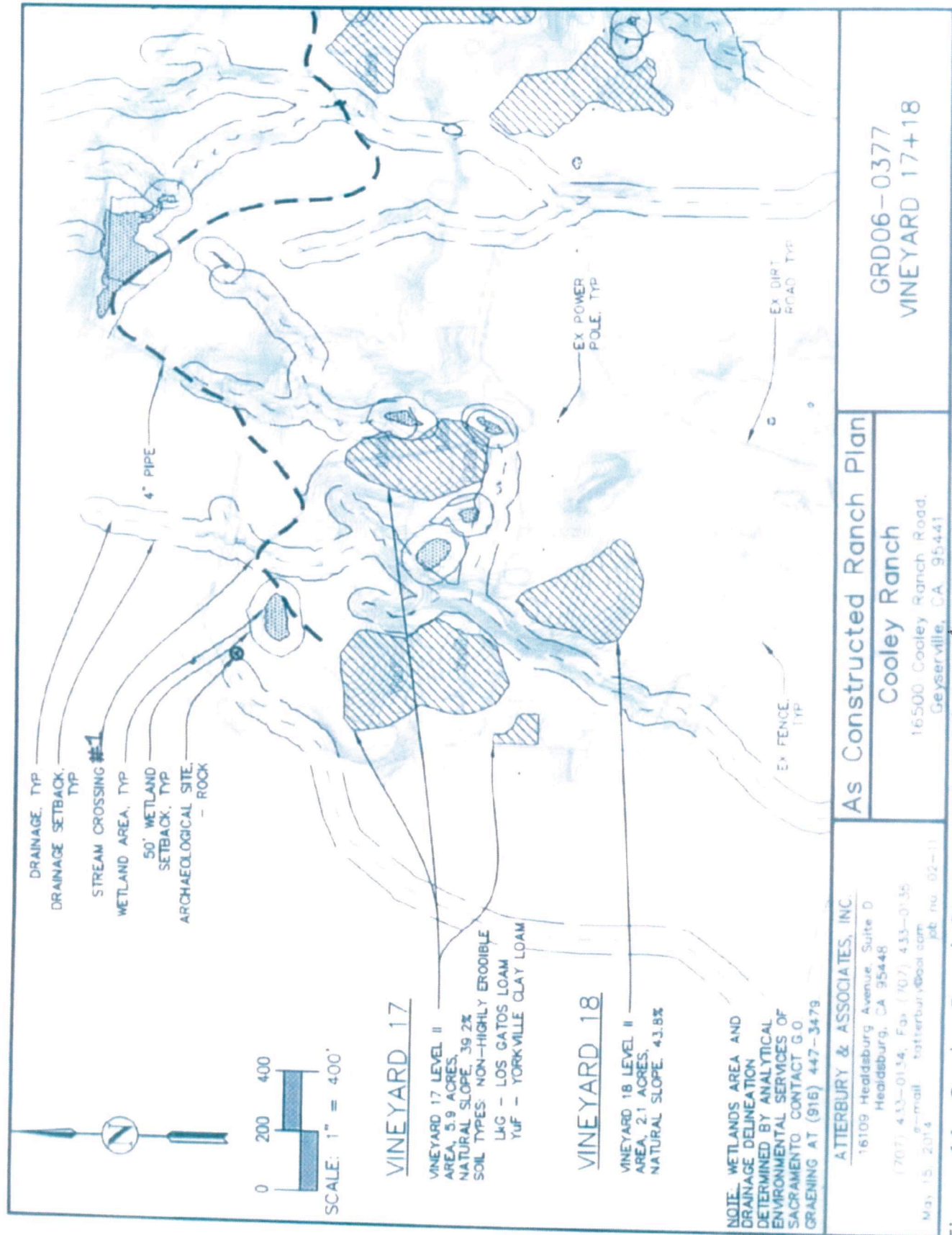
Figure 9. Cooley Ranch Project USACE File# 284900N

4" pipe from Reservoir D
 Stream Crossing # 7A



<p>As Constructed Ranch Plan</p> <p>Cooley Ranch</p> <p>16500 Cooley Ranch Road, Geyserville, CA, 95441</p>		<p>GRD06-0377</p> <p>VINEYARD 12,14+15</p>
<p>ATTERBURY & ASSOCIATES, INC</p> <p>16109 Healdsburg Avenue, Suite D Healdsburg, CA 95448 (707) 433-0134 Fax (707) 433-0135 e-mail: tatterbury@aol.com job no. 02-11 May 15, 2014</p>		

Figure 10. Cooley Ranch Project USACE File# 285900N



DRAINAGE, TYP
 DRAINAGE SETBACK, TYP
 STREAM CROSSING #1
 WETLAND AREA, TYP
 50' WETLAND SETBACK, TYP
 ARCHAEOLOGICAL SITE, - ROCK

0 200 400
 SCALE: 1" = 400'

VINEYARD 17

VINEYARD 17 LEVEL II
 AREA, 5.9 ACRES,
 NATURAL SLOPE, 39.2%
 SOIL TYPES: NON-HIGHLY ERODIBLE
 LUG - LOS GATOS LOAM
 YUF - YORKVILLE CLAY LOAM

VINEYARD 18

VINEYARD 18 LEVEL II
 AREA, 2.1 ACRES,
 NATURAL SLOPE, 43.8%

NOTE: WETLANDS AREA AND DRAINAGE DELINEATION DETERMINED BY ANALYTICAL ENVIRONMENTAL SERVICES OF SACRAMENTO CONTACT G.O. GRAENING AT (916) 447-3479

ATTERBURY & ASSOCIATES, INC.
 16109 Healdsburg Avenue, Suite D
 Healdsburg, CA 95448
 (707) 433-0134, Fax (707) 433-0135
 e-mail: atterbury@aol.com
 M.A. 15, 2014 job no. 02-11

As Constructed Ranch Plan
Cooley Ranch
 16500 Cooley Ranch Road,
 Geyserville, CA 95441

GRD06-0377
 VINEYARD 17+18

Figure 11. Cooley Ranch Project USACE File# 284900N



Figure 12. Cooley Ranch Project USACE File# 284900N



Figure 13. Cooley Ranch Project USACE File# 284900N

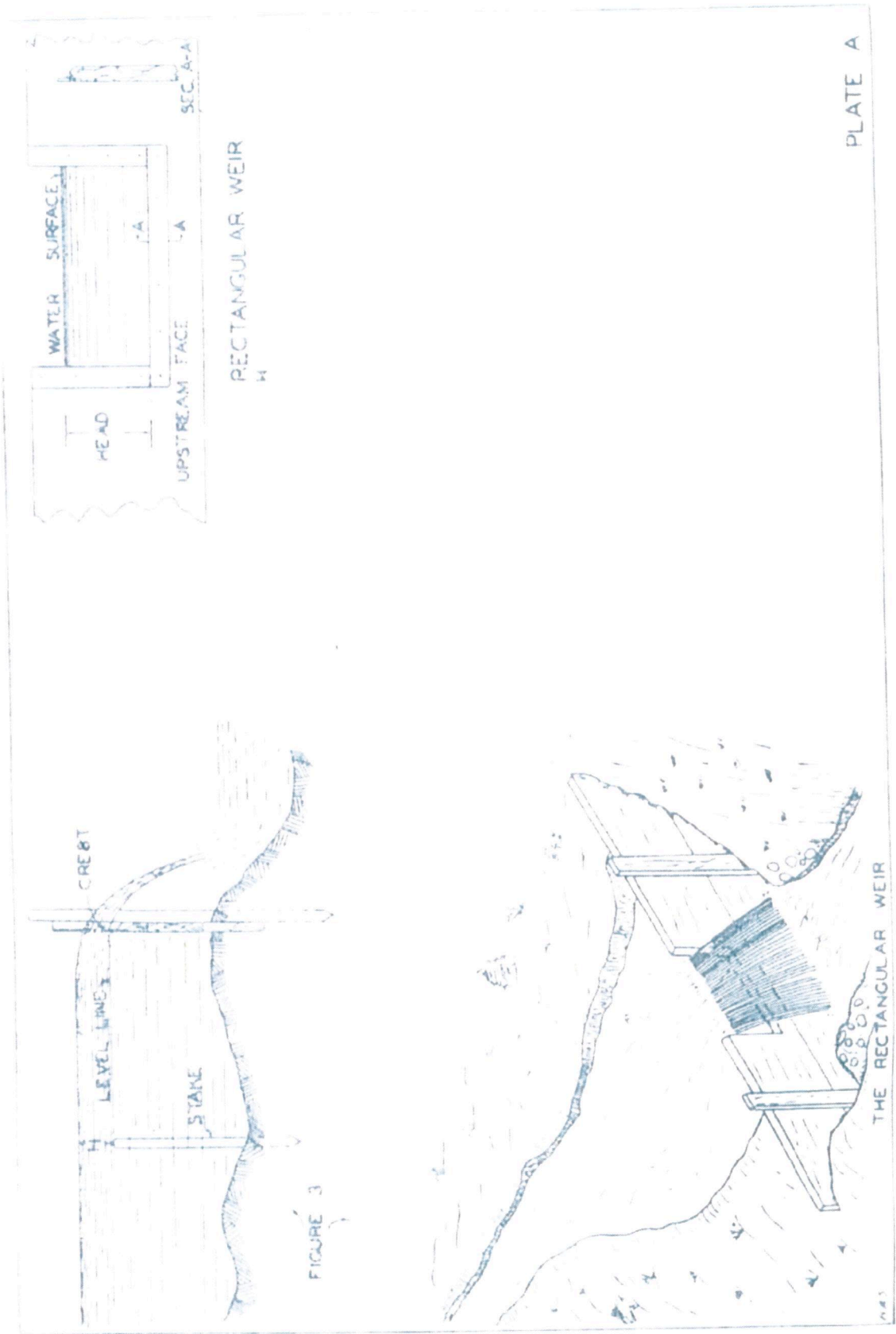


PLATE A

Figure 14. Rectangular Flow Measurement Weir
 Cooley Ranch Project USACE File# 284900N