

PROJECT COORDINATES:
 SMALL BOAT BASIN
 40° 48' 12" N
 124° 10' 39" W
 COMMERCIAL STREET DOCK
 40° 48' 17" N
 124° 10' 28" W
 WOODLEY ISLAND MARINA
 40° 48' 26" N
 124° 9' 42" W

USACE File: 1996-22150
City of Eureka
Maintenance Dredging
 Sheet 1 of 9
 August 2017

CITY OF EUREKA

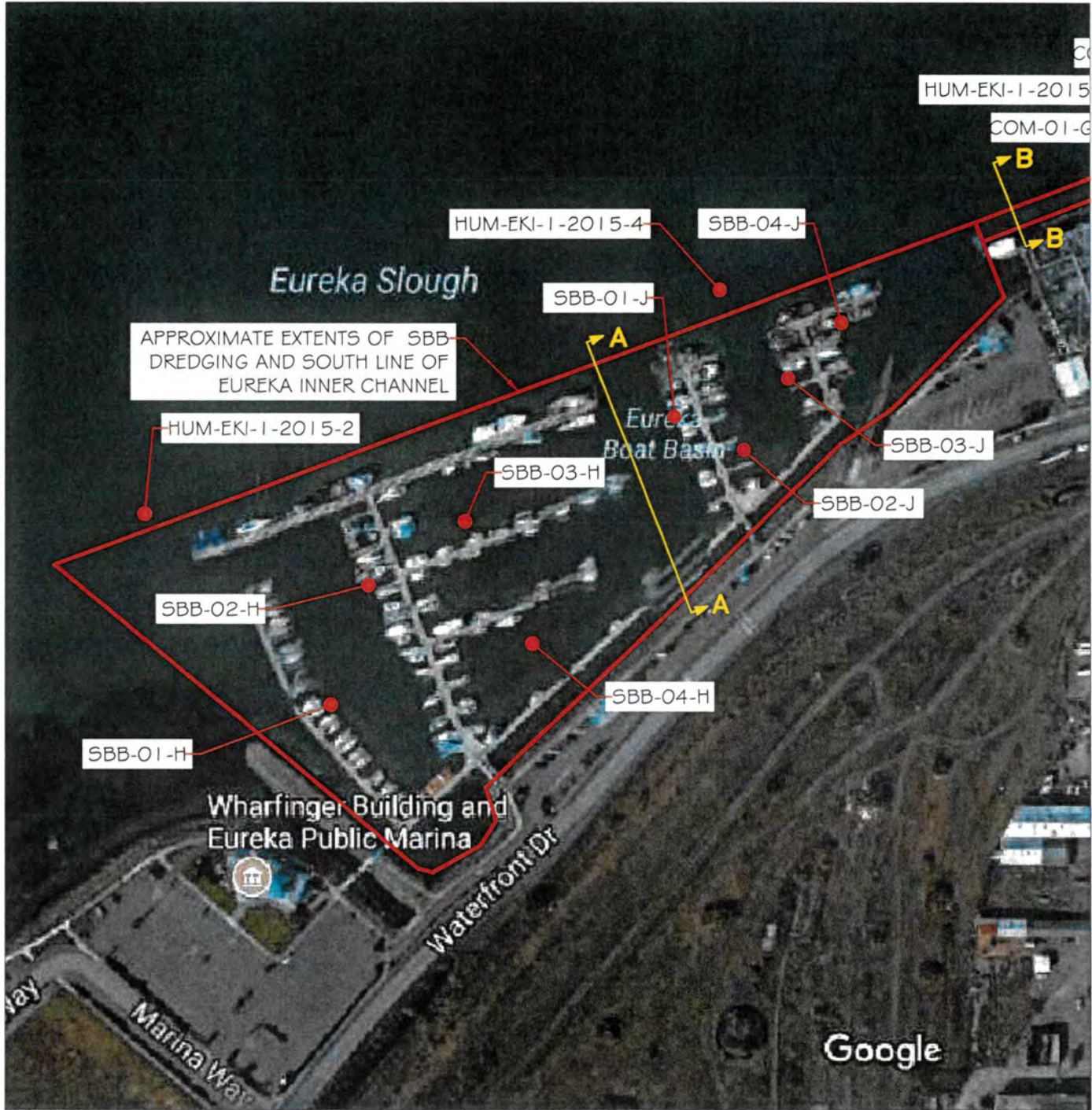


HUMBOLDT COUNTY



CALIFORNIA

IMAGES COURTESY OF GOOGLE

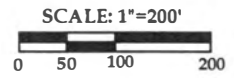


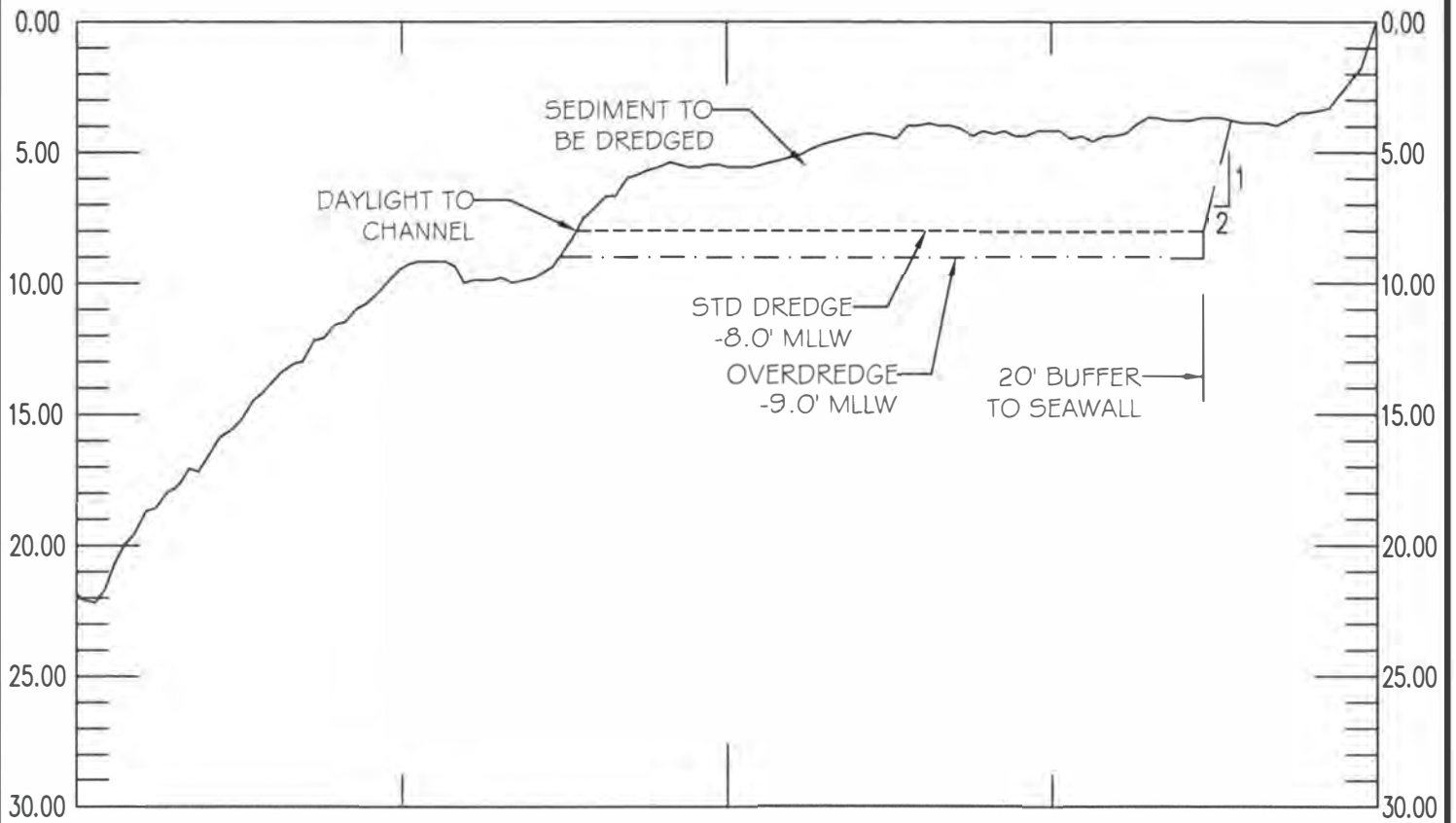
AERIAL VIEW

IMAGE COURTESY OF GOOGLE

- SBB-01-A SMALL BOAT BASIN SAMPLE LOCATION
- HUM-EKI-# ARMY CORPS SAMPLE LOCATION

NOTE: SAMPLE LOCATIONS ARE APPROXIMATE





TYPICAL DREDGE CROSS-SECTION 'A-A'

NOT TO SCALE

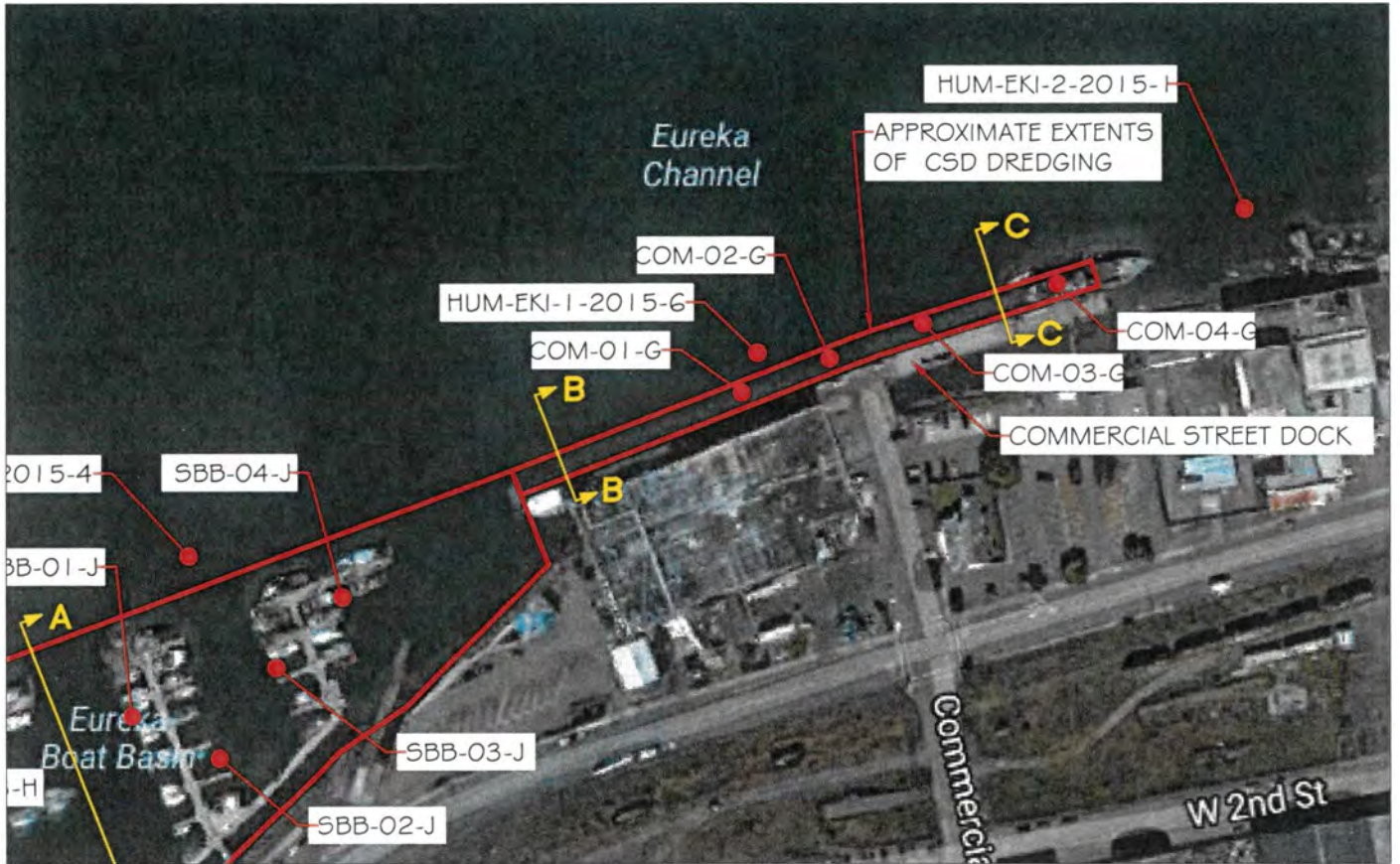


PACIFIC AFFILIATES
 CONSULTING ENGINEERS
 990 W. WATERFRONT DRIVE, EUREKA, CA 95501
 TEL (707) 445-3001 • FAX (707) 445-3003

SMALL BOAT BASIN
 CITY OF EUREKA
 MAINTENANCE DREDGING

6-21-17

Figure
 3

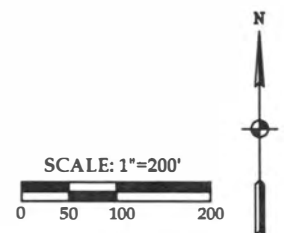


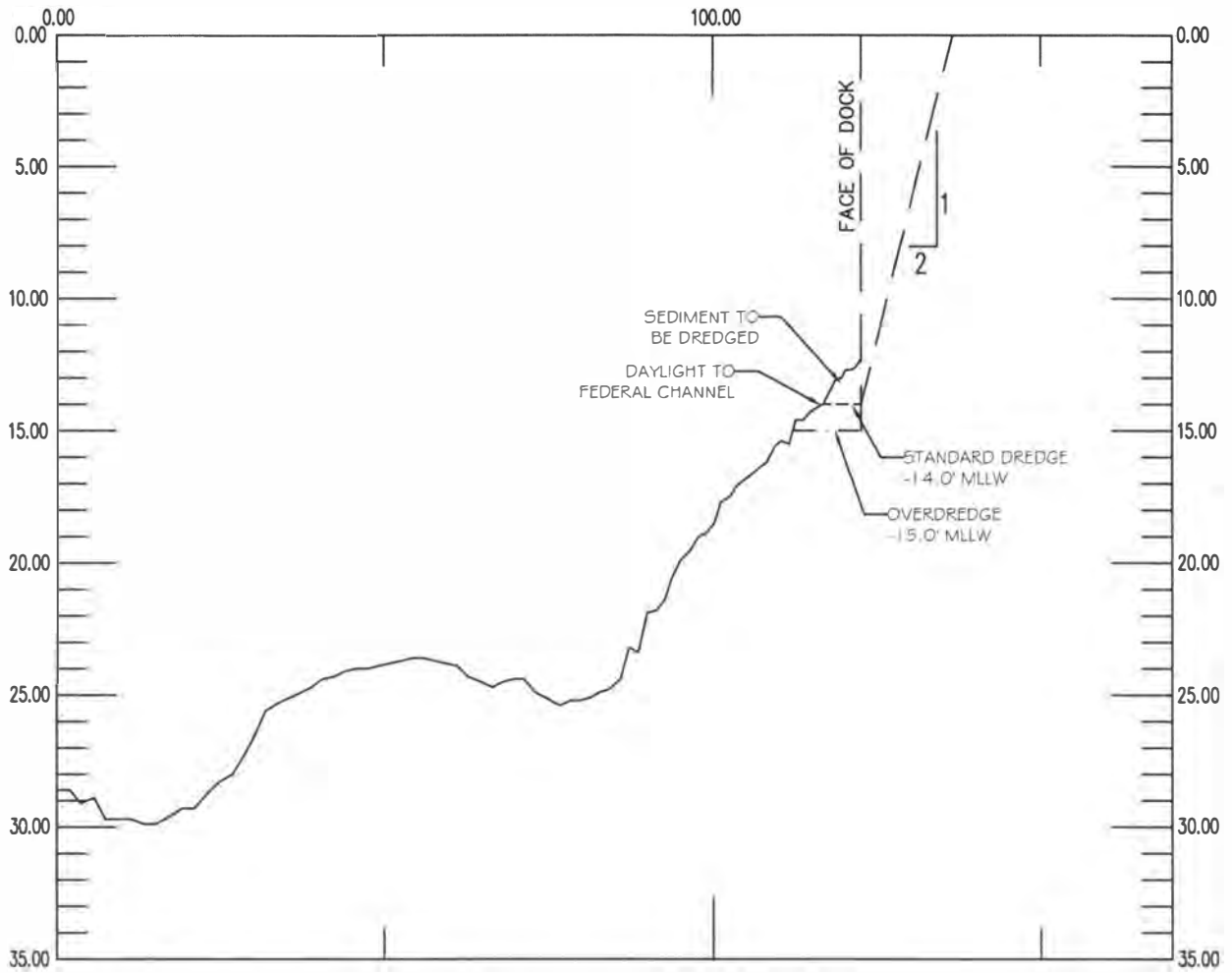
AERIAL VIEW

IMAGE COURTESY OF GOOGLE

- COM-01-A COMMERCIAL ST. DOCK SAMPLE LOCATION
- HUM-EKI-# ARMY CORPS SAMPLE LOCATION

NOTE: SAMPLE LOCATIONS ARE APPROXIMATE





TYPICAL DREDGE CROSS-SECTION 'B-B'

NOT TO SCALE

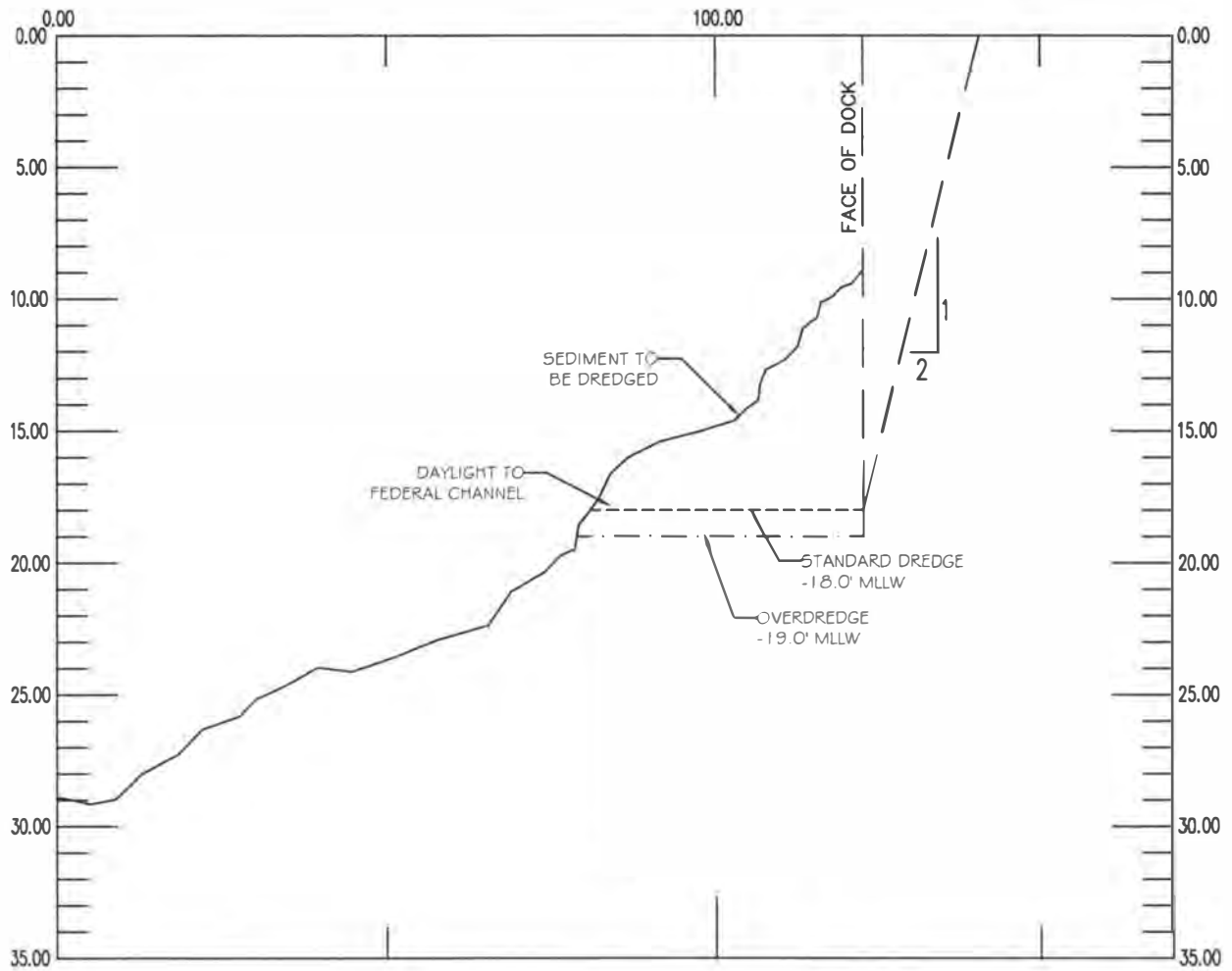


PACIFIC AFFILIATES
CONSULTING ENGINEERS
990 W. WATERFRONT DRIVE, EUREKA, CA 95501
TEL (707) 445-3001 • FAX (707) 445-3003

COMMERCIAL STREET DOCK
CITY OF EUREKA
MAINTENANCE DREDGING

6-21-17

Figure
5



TYPICAL DREDGE CROSS-SECTION 'C-C'

NOT TO SCALE

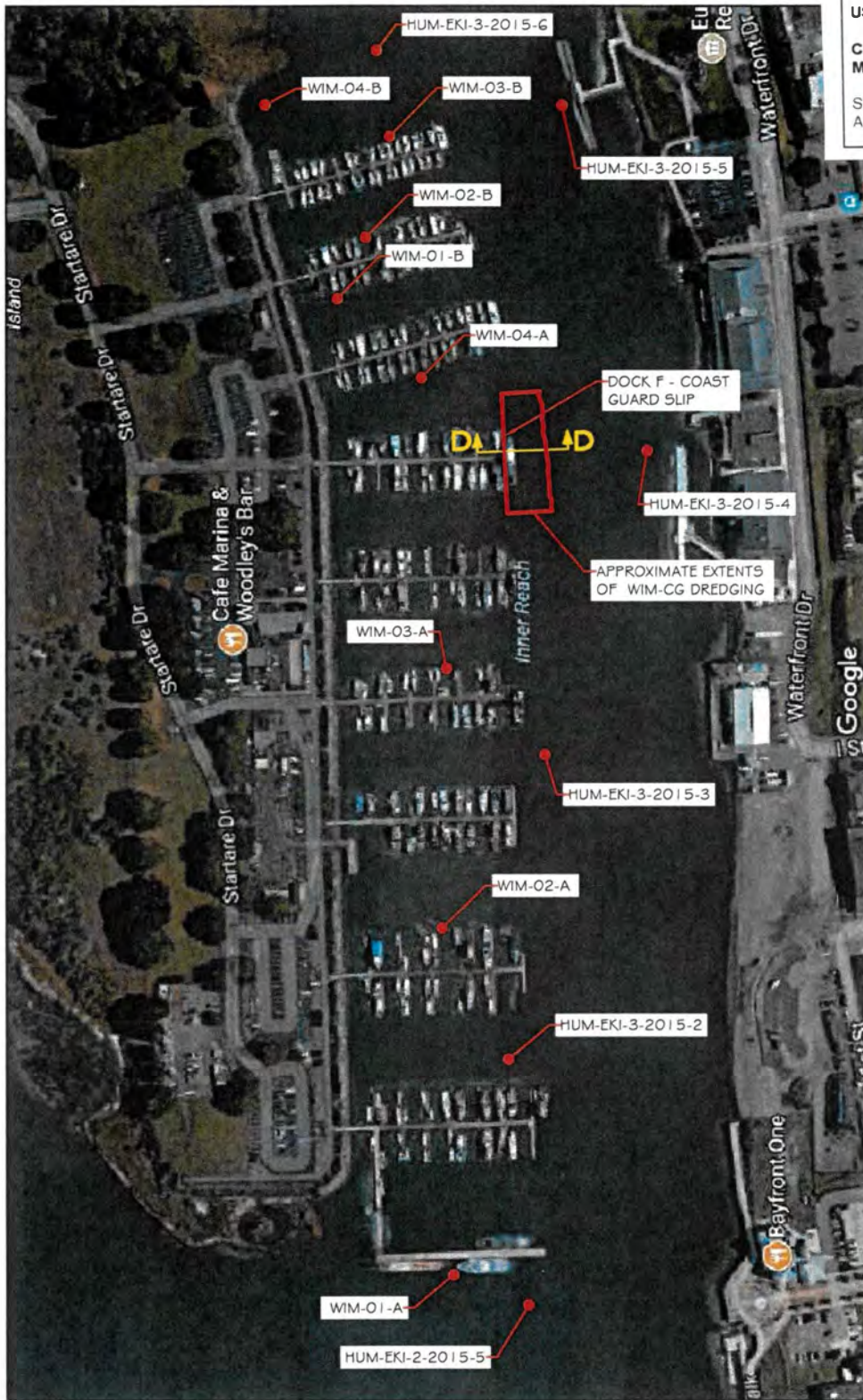


PACIFIC AFFILIATES
CONSULTING ENGINEERS
990 W. WATERFRONT DRIVE, EUREKA, CA 95501
TEL (707) 445-3001 • FAX (707) 445-3003

COMMERCIAL STREET DOCK
CITY OF EUREKA
MAINTENANCE DREDGING

6-21-17

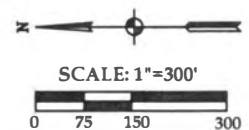
Figure
6



AERIAL VIEW

- WIM-O1-A WOODLEY ISLAND MARINA SAMPLE LOCATION
- HUM-EKI-# ARMY CORPS SAMPLE LOCATION

NOTE: SAMPLE LOCATIONS ARE APPROXIMATE
IMAGE COURTESY OF GOOGLE

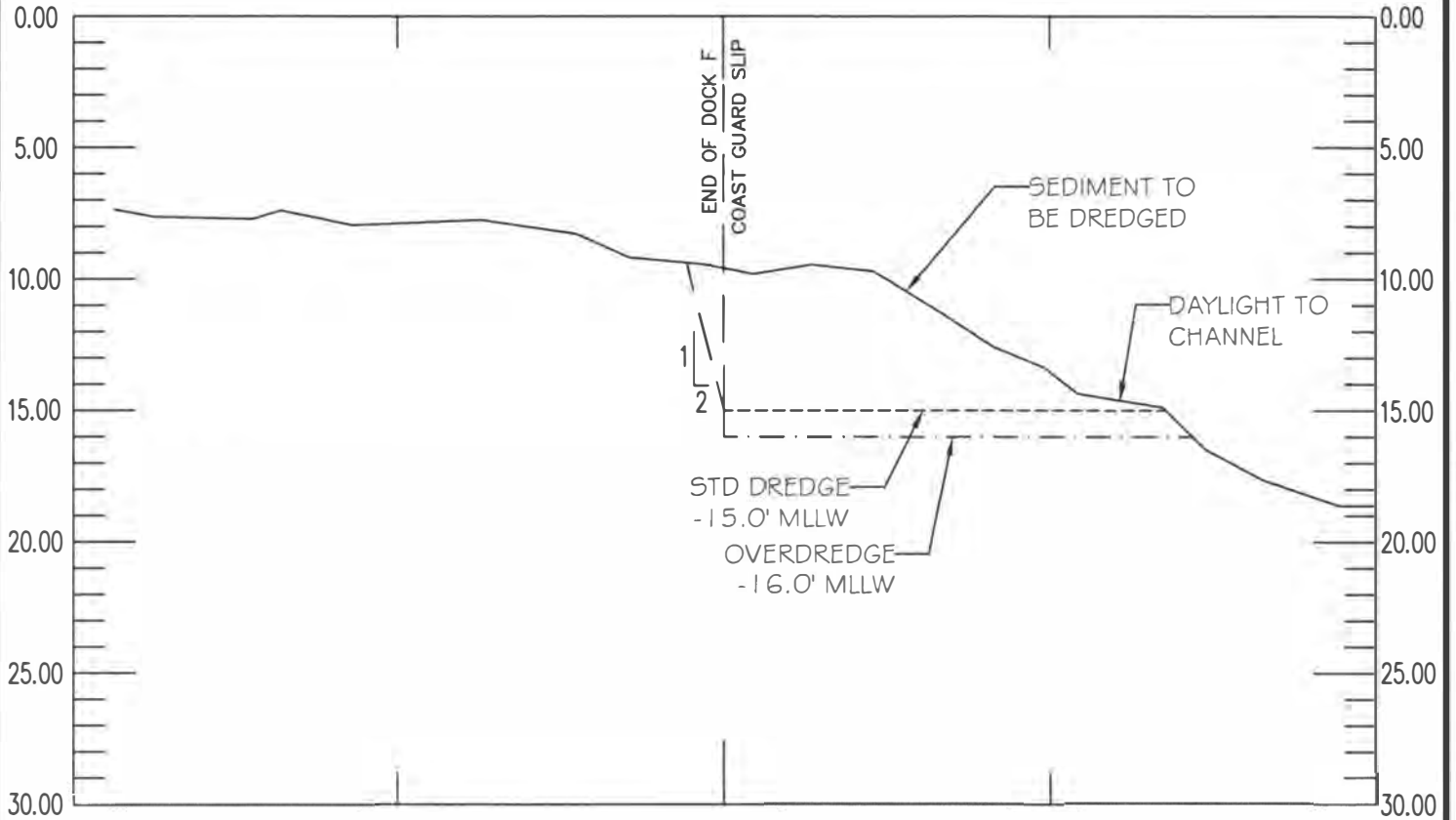


PACIFIC AFFILIATES
CONSULTING ENGINEERS
990 W. WATERFRONT DRIVE, EUREKA, CA 95501
TEL (707) 445-3001 • FAX (707) 445-3003

**WOODLEY ISLAND MARINA
CITY OF EUREKA
MAINTENANCE DREDGING**

6-21-17

Figure
7



TYPICAL DREDGE CROSS-SECTION 'D-D'

NOT TO SCALE



PACIFIC AFFILIATES
CONSULTING ENGINEERS
990 W. WATERFRONT DRIVE, EUREKA, CA 95501
TEL (707) 445-3001 • FAX (707) 445-3003

WOODLEY ISLAND MARINA
CITY OF EUREKA
MAINTENANCE DREDGING

6-21-17




Figure
8

Region 9 Ocean Dumping Sites

USACE File: 1996-22150

City of Eureka
Maintenance Dredging

Sheet 9 of 9
August 2017

-  HOODS Dump Site
-  3-mile Maritime Limit (Nautical Miles)
-  10-meter Bathymetric Contour Lines

Data Sources:
Bathymetric Contours: California Department of Fish and Game, 10 meter bathymetric contour lines to 600 meters depth on the California coast, July 2000
3-mile Maritime Limit: NOAA's Office of Coast Survey (OCS), September 2005
Shaded Relief: USGS National Elevation Data (100K)

WTR0601347.1 May 2006

