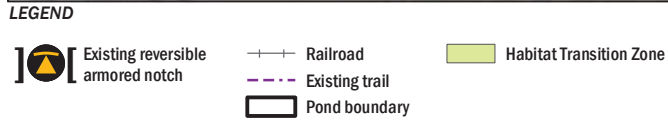


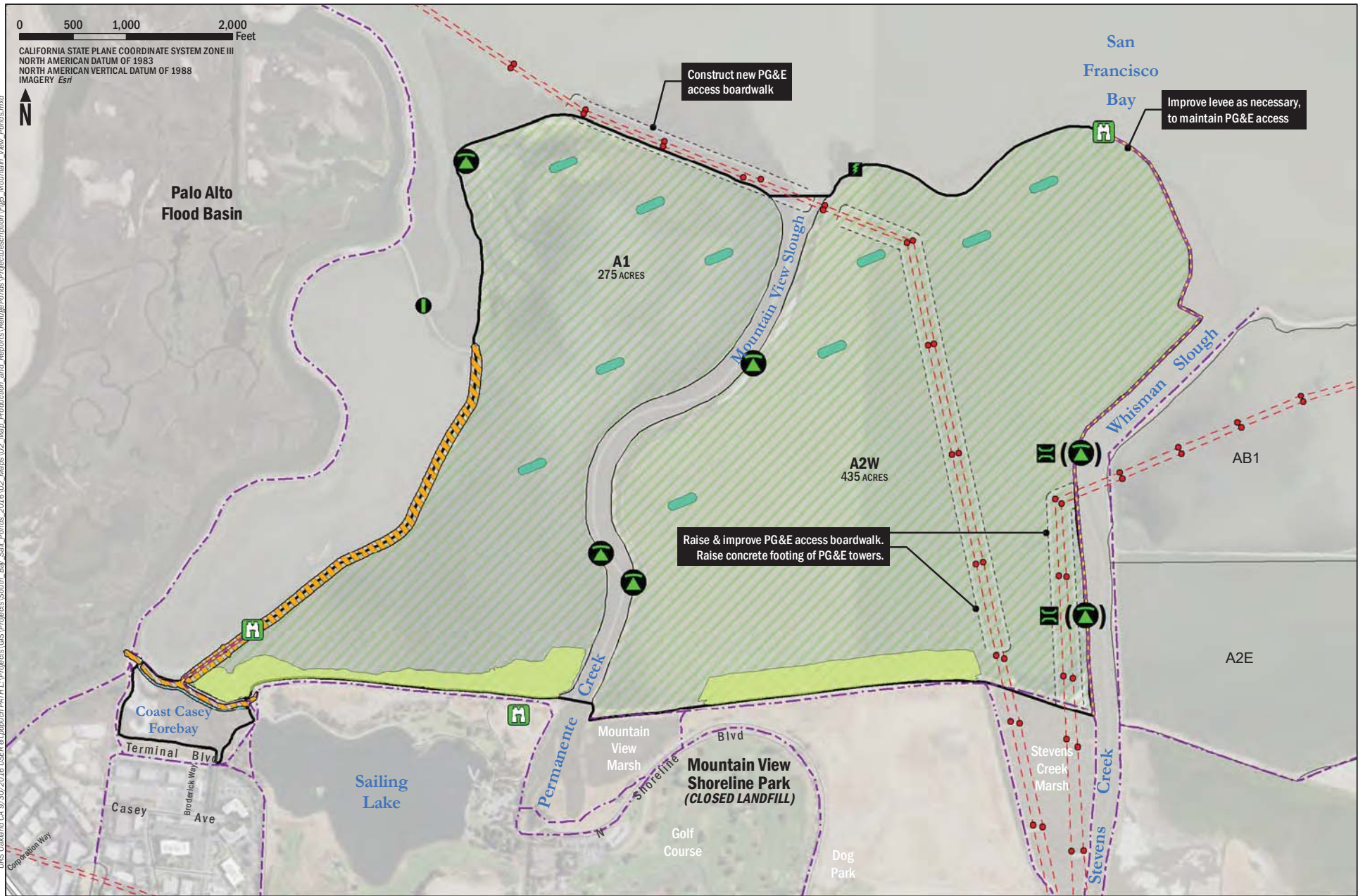
URS Oakland CA 9/30/2016 USER: eljopich PATH: L:\Projects\GIS\Projects\South Bay Salt Ponds_2016\02_Maps\02_Map_Production_and_Reports\Info\Info.mxd





I:\GIS\Oakland CA 9\30\2016 USER\alipopich PATH L\Projects\GIS\Projects\South Bay Salt Ponds_2016\02 Maps\02 Map Production and Reports\br\Map\Reports\ProjectDescription\Fig3_Island_Ponds.mxd





LEGEND

Existing control gate	Proposed breach	Proposed armored breach (two sides)	Viewing platform	PG&E turnaround	PG&E tower	Tidal marsh	Habitat Transition Zone
Bridge	PG&E power line	Phase 2 trail	Existing trail	Levee Improvement	Levee Lowering	Habitat Island	Pond Boundary

Figure 5
Alviso-Mountain View Ponds



LEGEND

*Pending property rights/easements