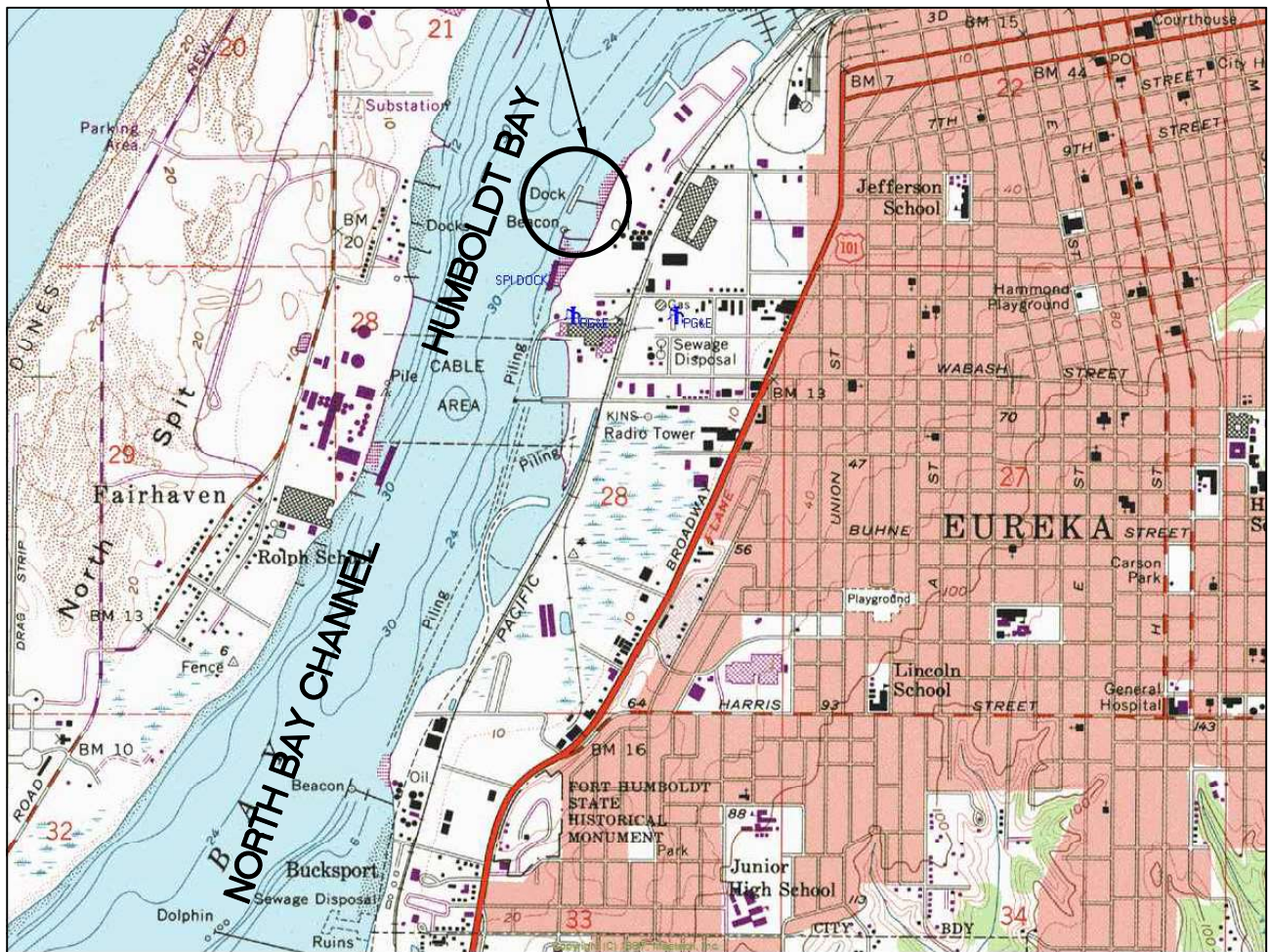


SCHNEIDER DOCK



SCALE: 1"=2,400'
0 600 1,200 2,400

SCHNEIDER DOCK
INDUSTRIAL PARK
1206 WEST 14TH STREET
Eureka, California

VICINITY MAP
FIGURE 1

PA PACIFIC AFFILIATES
CONSULTING ENGINEERS
990 W. WATERFRONT DRIVE, EUREKA, CA 95501
TEL (707) 445-3001 FAX (707) 445-3003

SAMPLING NOTES

SAMPLING LOCATION

CONTINUOUS CORE SAMPLES OBTAINED AT FOUR LOCATIONS ON AUGUST 23, 2013 BY PACIFIC AFFILIATES, INC.

VIBECORE-D CORING DEVICE USED TO OBTAIN SAMPLES

SAMPLE	CORE LENGTH	WATER DEPTH	TIME
A-1	8.5 FT	37.5 FT	14:25
A-2	6.5 FT	37.0 FT	11:45
A-3	7.0 FT	35.5 FT	11:15
A-4	13.0 FT	32.5 FT	13:45

DREDGE NOTES

- DESIGN DREDGE DEPTH IS -37 FT MLLW PLUS 2 FT OVERDREDGE
- EDGED OF PROPOSED DREDGE AREA WILL BE BOX CUT
- NORTH BAY AND EUREKA CHANNELS ARE DREDGED BY U.S. ARMY CORPS OF ENGINEERS TO -38 FT MLLW. CHANNEL EDGES ARE BOX CUT

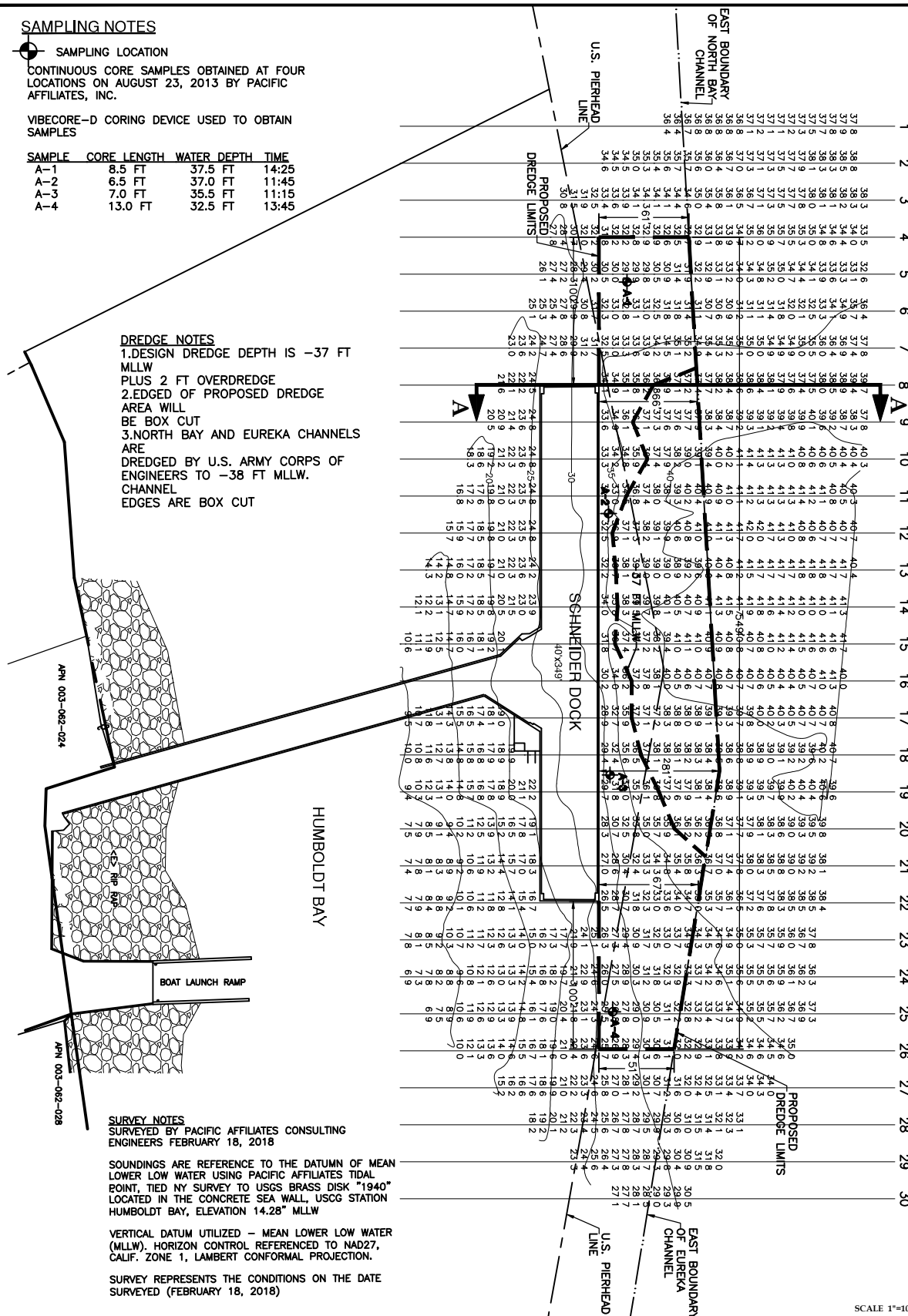
SURVEY NOTES

SURVEYED BY PACIFIC AFFILIATES CONSULTING ENGINEERS FEBRUARY 18, 2018

SOUNDINGS ARE REFERENCE TO THE DATUM OF MEAN LOWER LOW WATER USING PACIFIC AFFILIATES TIDAL POINT, TIED BY SURVEY TO USGS BRASS DISK "1940" LOCATED IN THE CONCRETE SEA WALL, USCG STATION HUMBOLDT BAY, ELEVATION 14.28" MLLW

VERTICAL DATUM UTILIZED - MEAN LOWER LOW WATER (MLLW), HORIZON CONTROL REFERENCED TO NAD27, CALIF. ZONE 1, LAMBERT CONFORMAL PROJECTION.

SURVEY REPRESENTS THE CONDITIONS ON THE DATE SURVEYED (FEBRUARY 18, 2018)



SCHNEIDER DOCK
 990 W. WATERFRONT DR.
 EUREKA, CA 95519
 APN 003-062-026

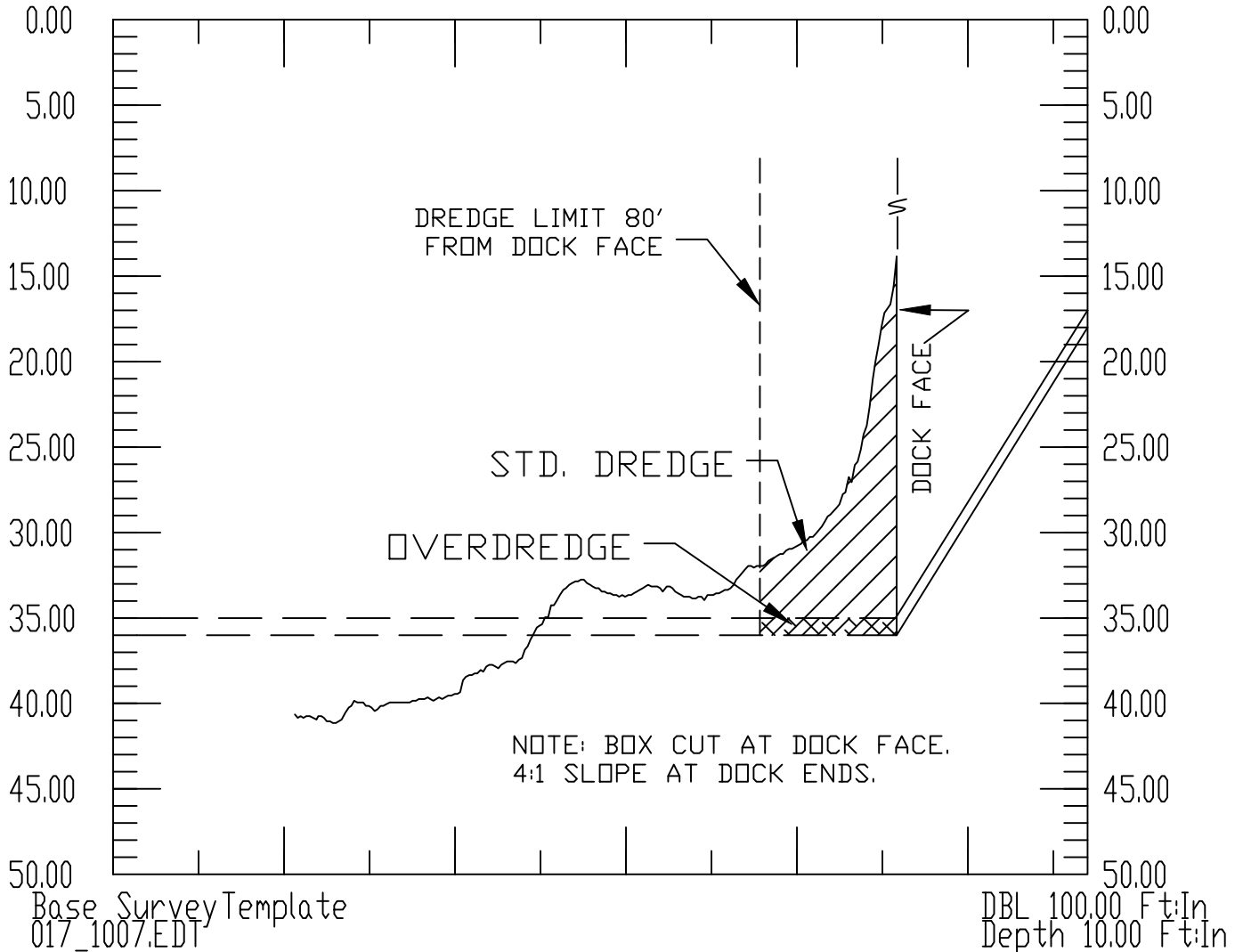
BATHYMETRIC SURVEY & SAMPLE LOCATIONS
 FIGURE 2



PACIFIC AFFILIATES
 CONSULTING ENGINEERS
 990 W. WATERFRONT DRIVE, EUREKA, CA 95501
 TEL (707) 445-3001 • FAX (707) 445-3003

SCALE 1"=100' REVISED MARCH 14, 2018

X: 1393594.03 017_1007.EDT Length: 2160.02 Azimuth: 107.31 X: 1395656.21
 Y: 540098.63 Y: 539455.89



SCALE: H: 1"=100'
 V: 1"=10'



SCHNEIDER DOCK
 990 WATERFRONT DRIVE
 Eureka, California

TYPICAL CROSS SECTION
 OF DREDGE PRISM
 FIGURE 3



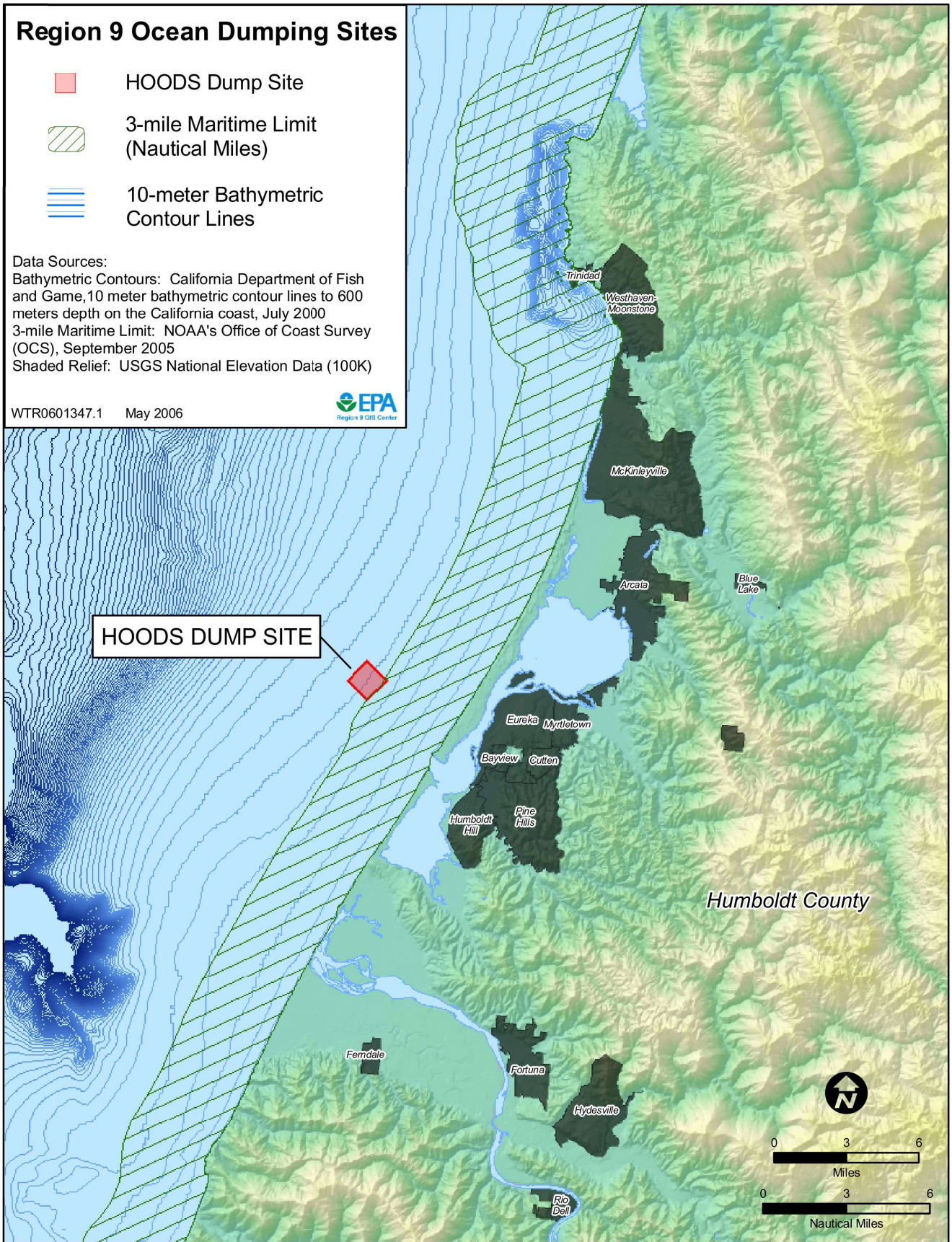
PACIFIC AFFILIATES
 CONSULTING ENGINEERS
 990 W. WATERFRONT DRIVE, EUREKA, CA 95501
 TEL (707) 445-3001 FAX (707) 445-3003

Region 9 Ocean Dumping Sites

- HOODS Dump Site
-  3-mile Maritime Limit (Nautical Miles)
-  10-meter Bathymetric Contour Lines

Data Sources:
 Bathymetric Contours: California Department of Fish and Game, 10 meter bathymetric contour lines to 600 meters depth on the California coast, July 2000
 3-mile Maritime Limit: NOAA's Office of Coast Survey (OCS), September 2005
 Shaded Relief: USGS National Elevation Data (100K)

WTR0601347.1 May 2006



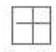

SCHNEIDER DOCK
 990 WATERFRONT DR
 Eureka, California

HOODS – Area Map
 Figure 4



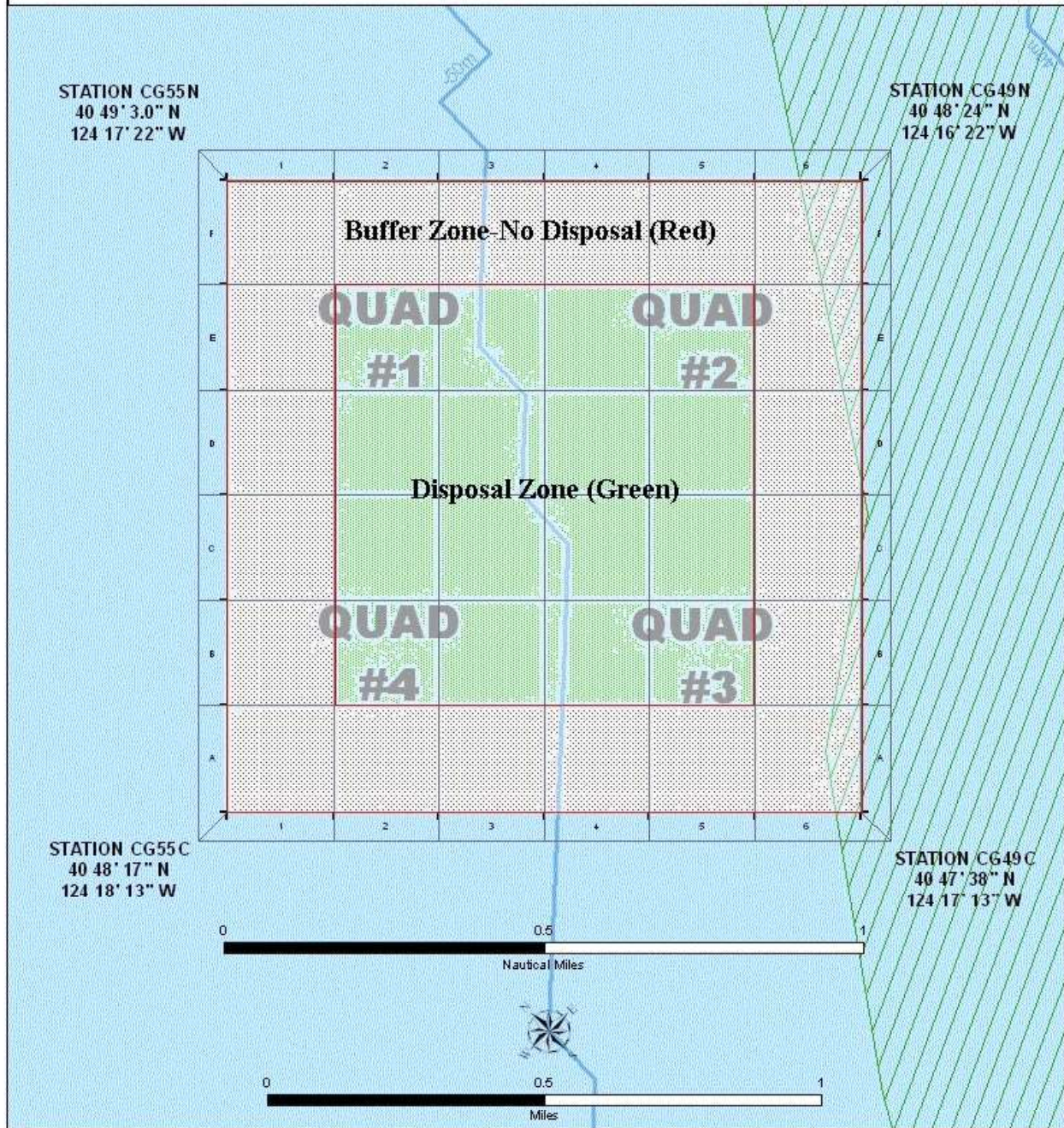
PACIFIC AFFILIATES
 CONSULTING ENGINEERS
 990 W. WATERFRONT DRIVE, EUREKA, CA 95501
 TEL (707) 445-3001 FAX (707) 445-3003

Region 9 Ocean Dumping Sites

-  HOODS Dump Site
-  3-mile Maritime Limit (Nautical Miles)
-  10-meter Bathymetric Contour Lines

Data Sources:
 Bathymetric Contours: California Department of Fish and Game, 10 meter bathymetric contour lines to 600 meters depth on the California coast, July 2000
 3-mile Maritime Limit: NOAA's Office of Coast Survey (OCS), September 2005

WTR0601347.2 May 2006

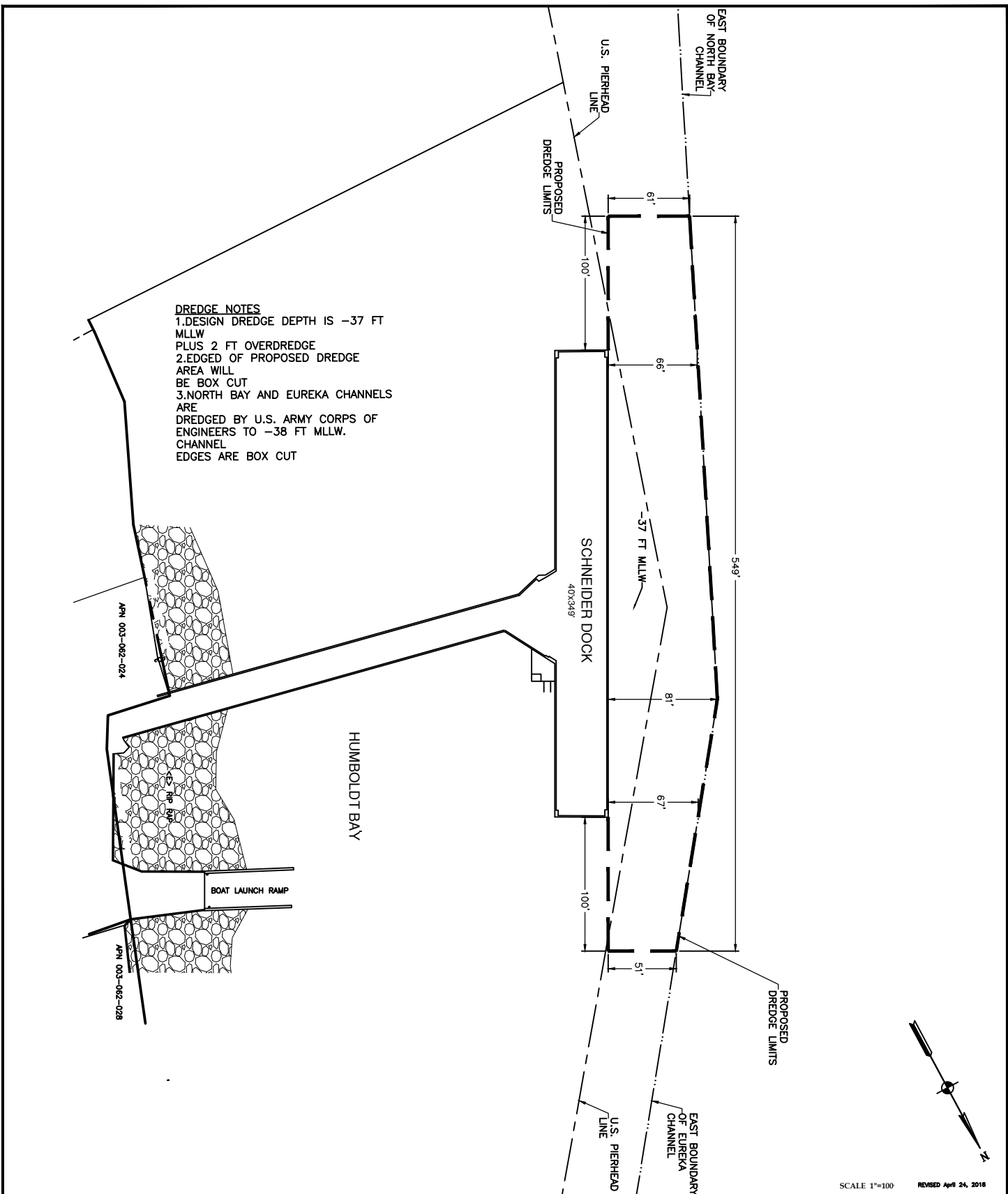


SCHNEIDER DOCK
 990 WATERFRONT DRIVE
 Eureka, California

HOODS - Quadrants
 Figure 5



PACIFIC AFFILIATES
 CONSULTING ENGINEERS
 990 W. WATERFRONT DRIVE, EUREKA, CA 95501
 TEL (707) 445-3001 FAX (707) 445-3003



SCHNEIDER DOCK
 990 W. WATERFRONT DR.
 EUREKA, CA 95519
 APN 003-062-026

**DREDGE FOOTPRINT
 AND FEDERAL
 CHANNEL**
 Figure 6

 **PACIFIC AFFILIATES**
 CONSULTING ENGINEERS
 990 W. WATERFRONT DRIVE, EUREKA, CA 95501
 TEL (707) 445-3001 • FAX (707) 445-3003