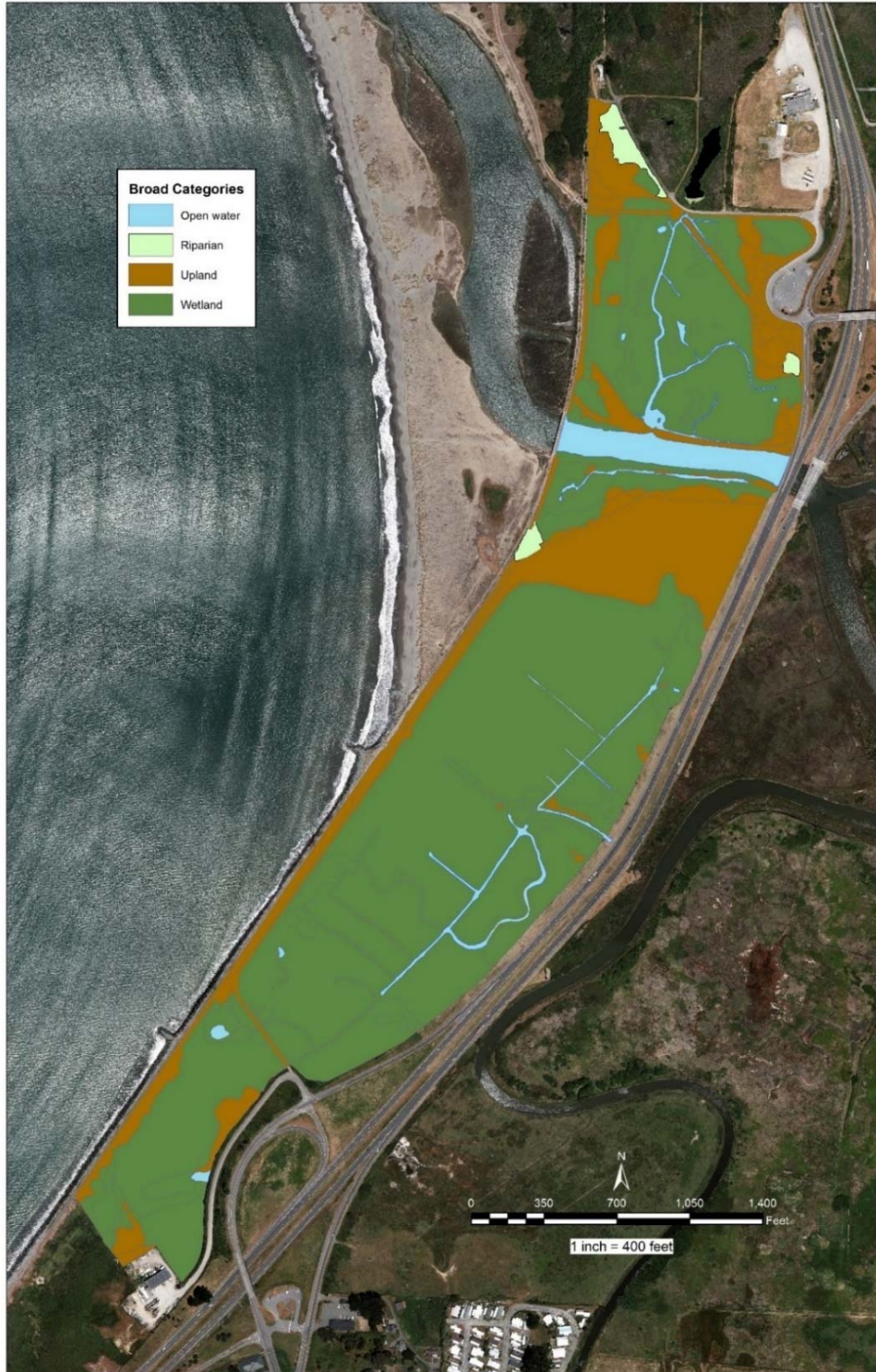
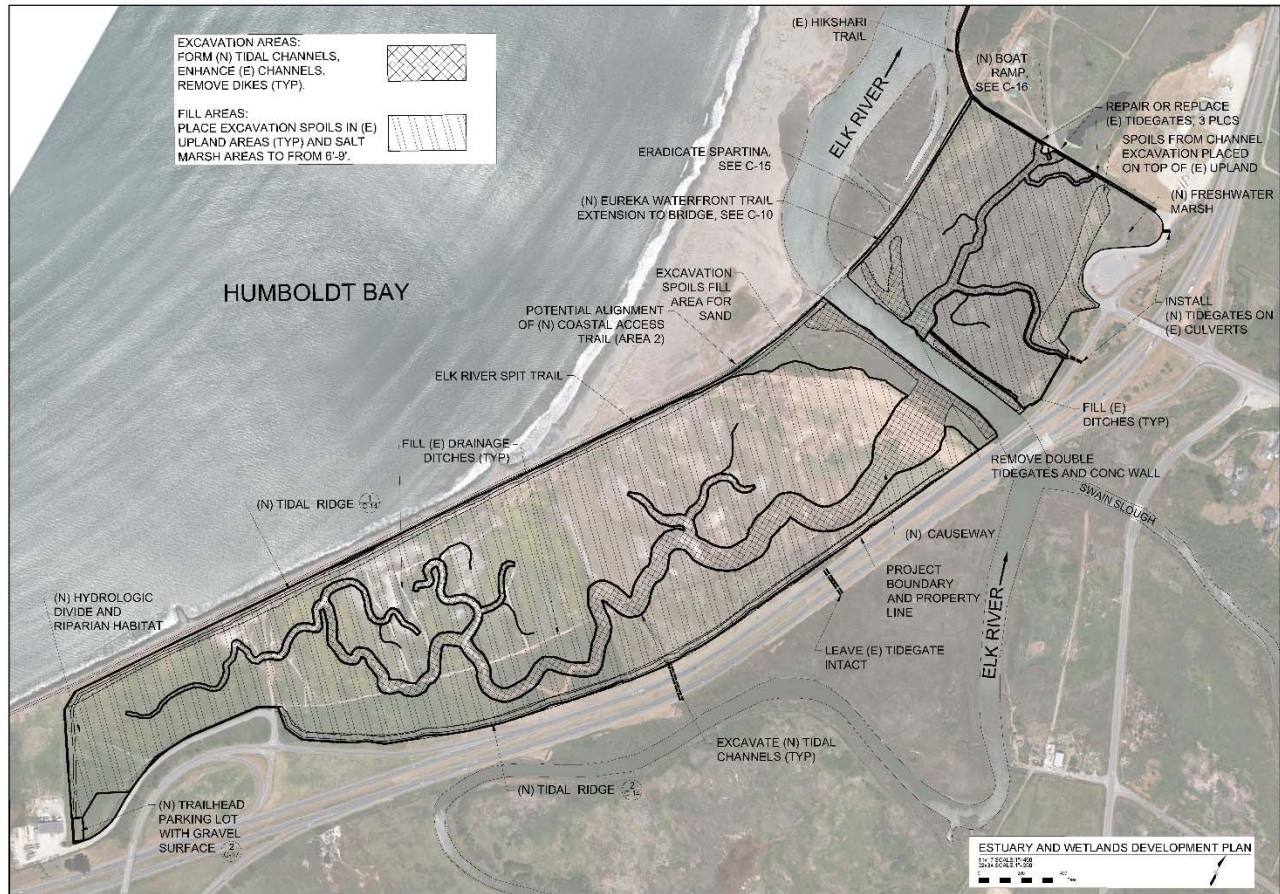


Map of project areas 1 and 2, including assessor parcels.



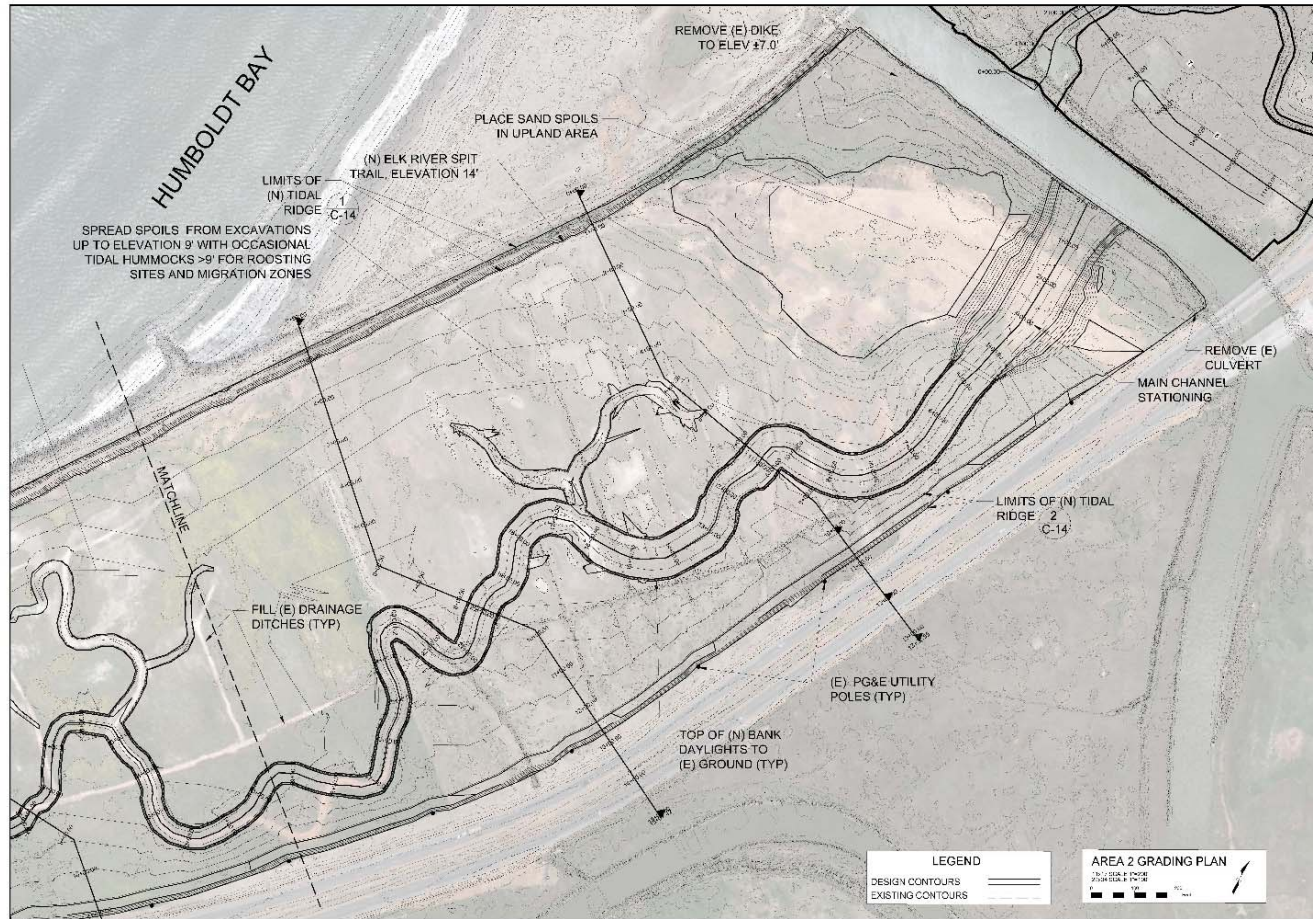
Existing broad habitat categories mapped in Areas 1 and 2.



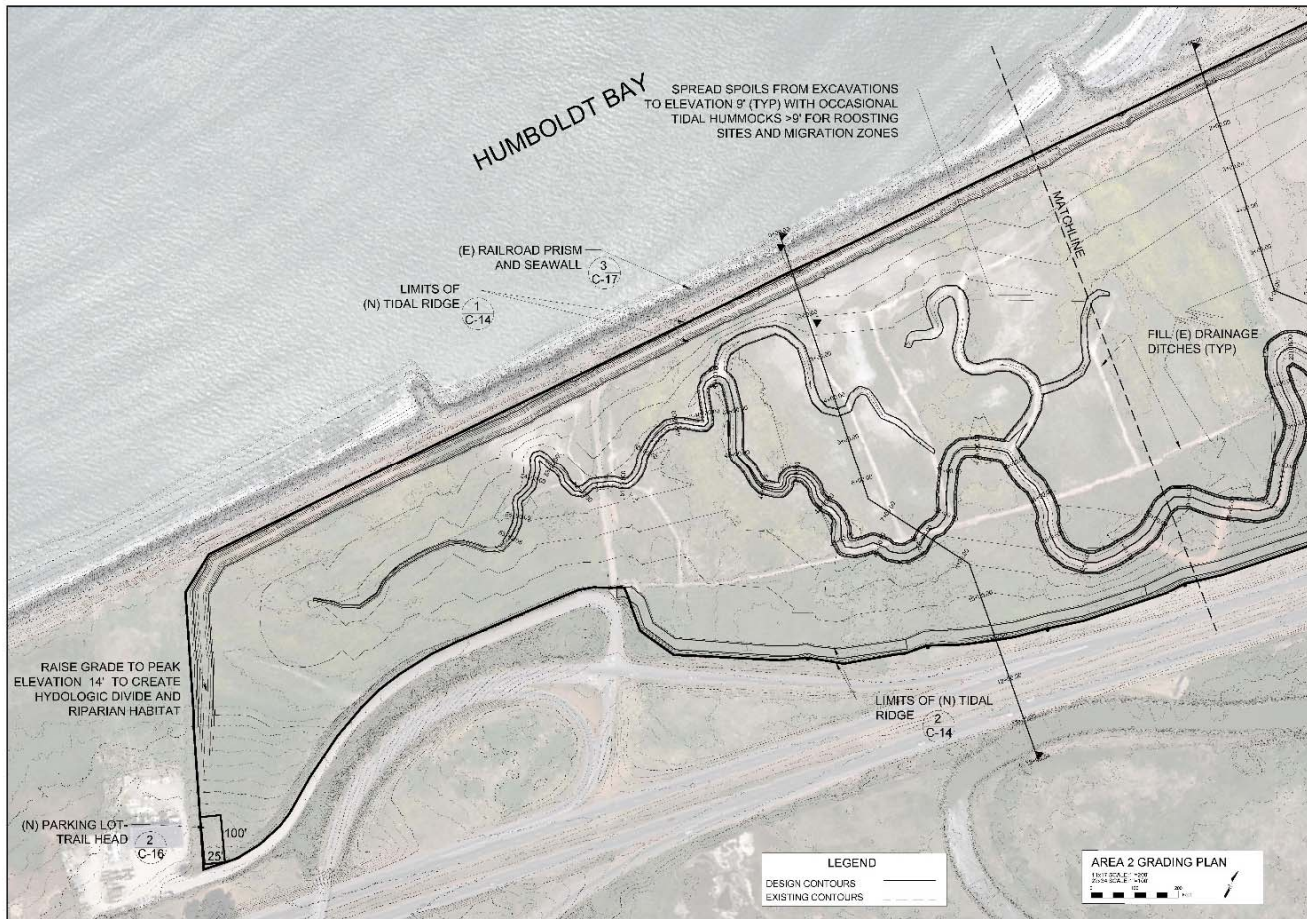
Overview of the estuary and wetland development plan, showing new tidal channels as well as locations of causeways, viewing platforms, trail extensions, and the non-motorized boat ramp.



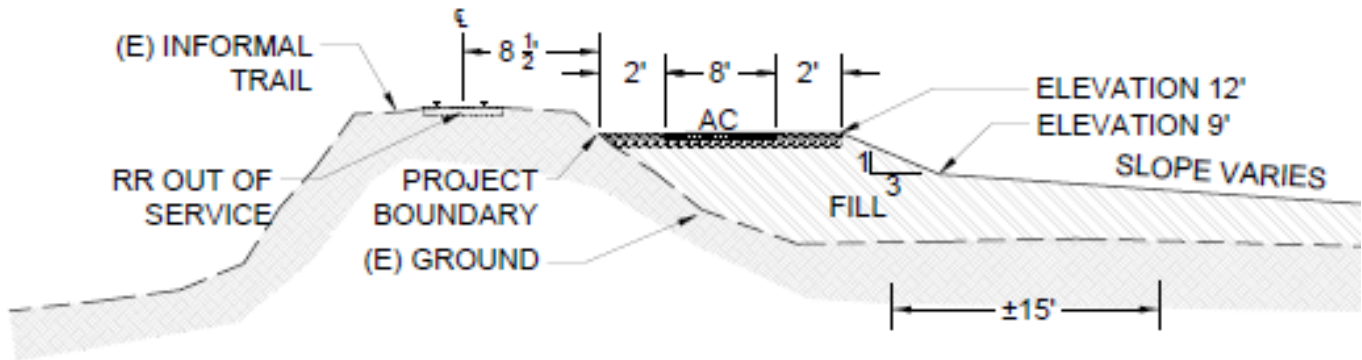
Figure 8. Existing conditions of the Elk River Estuary Enhancement Project, Area 1.



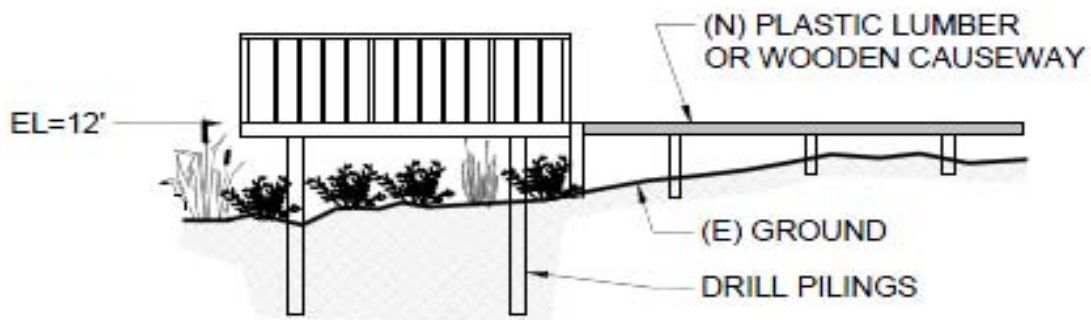
Overview of Area 2 design elements, northern end .



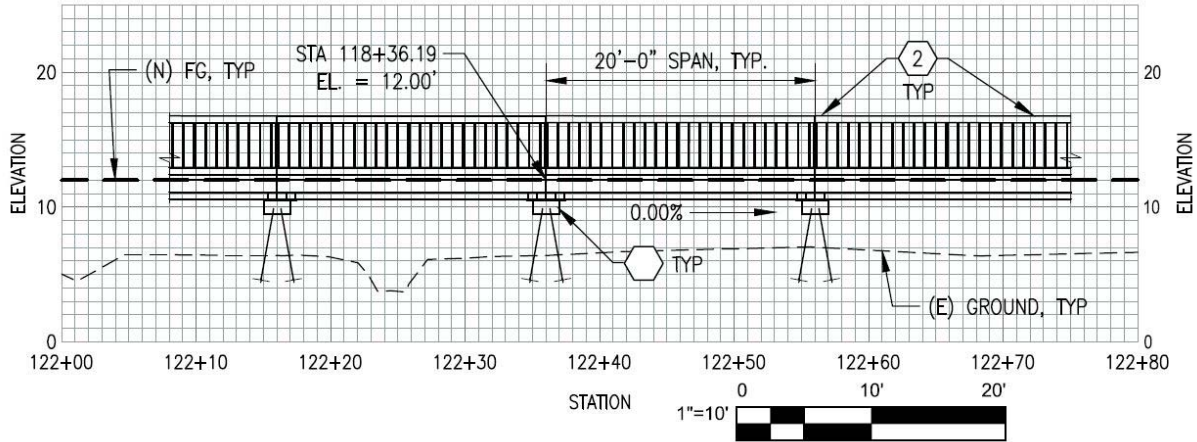
Overview of Area 2 design elements, southern end.



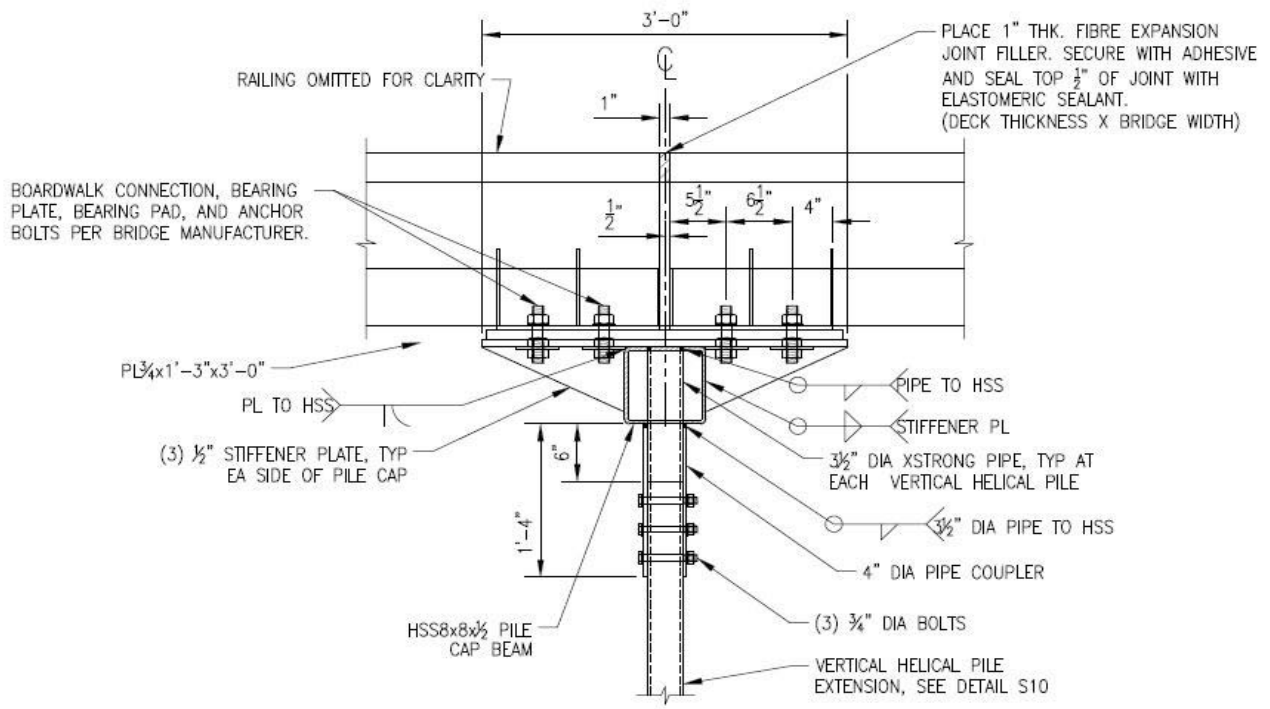
Conceptual Waterfront Trail extension cross section showing trail width, slope ration, and fill elevation relative to the existing railroad grade.



Conceptual diagram of elevated causeway and viewing platform .



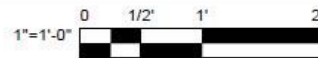
Cross sectional view of typical elevated causeway and viewing platform, to be constructed in Area 1



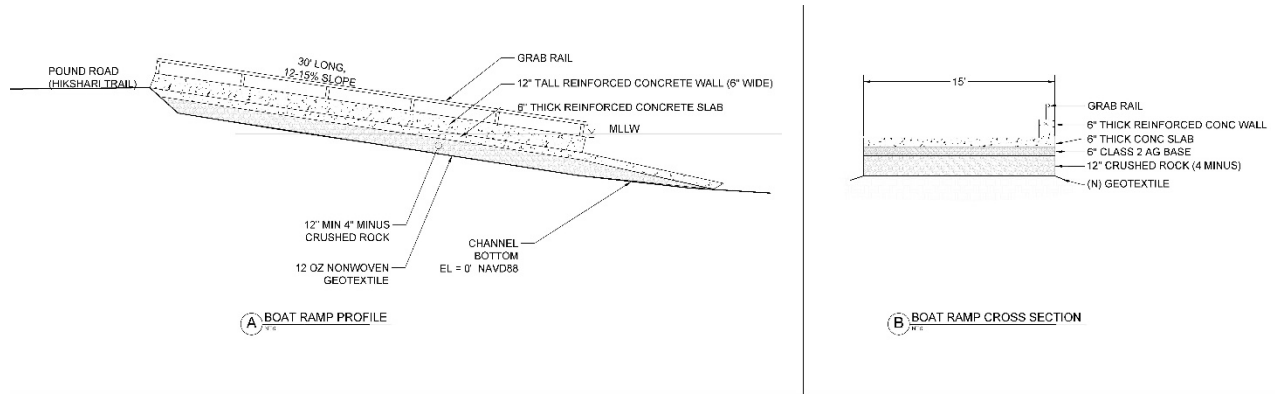
S12
 TYP

BOARDWALK HELICAL CAP DETAIL

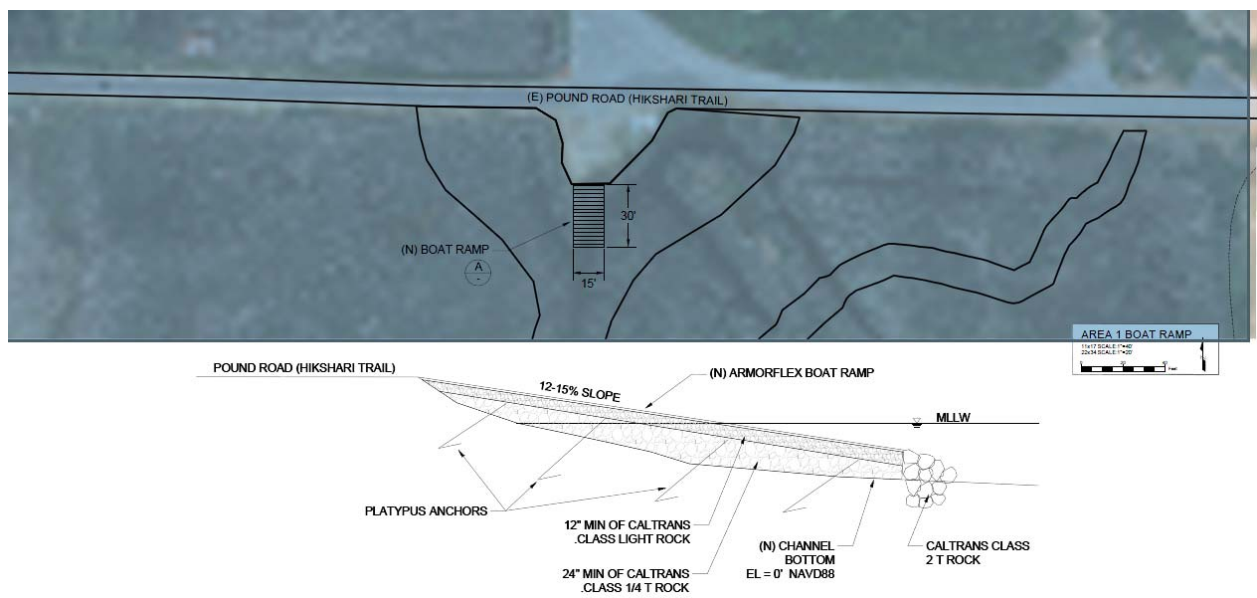
SCALE



Detailed drawing of helical cap detail that will be used to install and elevated causeway and viewing platforms. The helical caps allow the causeways and viewing platforms to be elevated above the salt marsh and estuary, minimizing trail impacts to sensitive habitats in both the implementation and post-implementation public uses phases of the project. Helical caps avoid the need to drive pile posts, which typically have greater environmental impacts.



The Area 1 boat ramp will use a concrete slab or a similar material .



Area 1 boat ramp specifications showing location, dimensions, cross sectional view, and materials .