

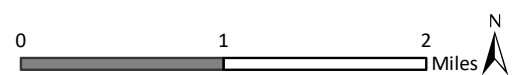


Path: L:\Acad 2000 Files\27000\27307\GIS\ArcMap\Study Area.mxd

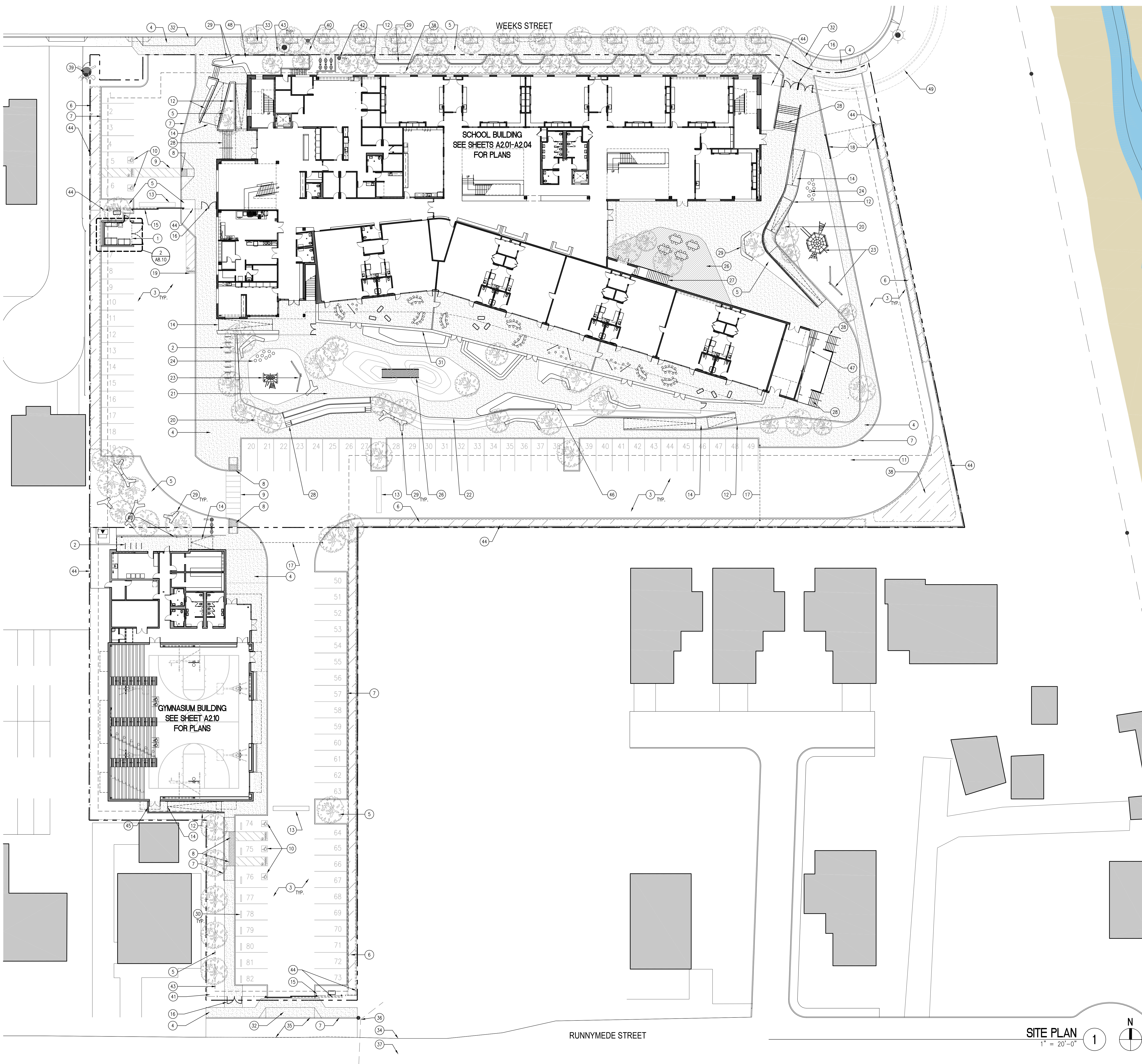
Sources: National Geographic, WRA | Prepared By: smortensen, 12/20/2017

Figure 1. Project Area Location

1200 Weeks Street
East Palo Alto, California



STUDIO BONDY ARCHITECTURE OWNS ALL COPYRIGHTS AND OTHER INTELLECTUAL PROPERTY RIGHTS IN THIS WORK PRODUCT AND IT IS PROTECTED BY UNITED STATES COPYRIGHT LAW AND INTERNATIONAL TREATY PROVISIONS. REFER TO THE PROJECT MANUAL FOR APPLICABLE USE RESTRICTIONS.



- GENERAL NOTES**
- AREAS SHOWN HERE ARE TAKEN TO THE INTERIOR OF ROOM WALLS, UNLESS OTHERWISE NOTED. WHERE AREAS ARE NOTED GROSS OR NET, THEY COMPLY WITH CODE DEFINITIONS RELATED TO THE CALCULATION OF OCCUPANCY LOAD (GROSS ROOM AREA IS INCLUSIVE OF CASEWORK)
 - PROVIDE TACTILE EXIT SIGNS & FLOOR IDENTIFICATION SIGNS PER CBC SECT. 1011.4, 1022.8, 119-504.8
 - SEE FLOOR PLANS AND PARTITION SCHEDULE FOR ADDITIONAL INFORMATION
 - SEE DOOR SCHEDULE FOR LOCATION OF DOORS WITH PANIC HARDWARE. DOORS SERVING AN OCCUPANT LOAD OF 50 OR MORE TO BE PROVIDED WITH PANIC HARDWARE COMPLYING WITH CBC 1008.1.10
 - EGRESS PATH LIGHTING PER CBC SECTION 1006
- VEHICULAR PARKING:**
REQUIRED 1 FOR EACH CLASSROOM, PLUS 1 FOR EACH 100 SQ. FT. IN THE AUDITORIUM, OR ANY SPACE SO USED. (MUNI CODE 6119)
SCHOOLS:
CLASSROOMS: PRE-K = 8
1ST-8TH = 16
SCIENCE/ART = 2
TOTAL REQUIRED: 6400SF / 100 = 65
GYMNASIUM: 6400SF / 100 = 65
TOTAL REQUIRED: 91 SPACES
- PROPOSED:
STANDARD PARKING STALLS: 78
ACCESSIBLE STALLS: 5 TOTAL (INCLUDING 1 VAN)
TOTAL PROPOSED STALLS: 82 SPACES
- BICYCLE PARKING:**
REQUIRED:
CALGREEN SECT. 5.106.4.2:
STUDENT: MINIMUM 4 "TWO-BIKE" CAPACITY RACKS. [TOTAL OF 8 SPACES]
STAFF (COVERED): MINIMUM TWO SPACES PER NEW BUILDING
PROPOSED: STUDENT (UNCOVERED): = 8 "TWO-BIKE" CAPACITY RACKS FOR TOTAL 16 SPACES
STAFF (COVERED): = 4 "TWO-BIKE" CAPACITY RACKS FOR TOTAL OF 8 SPACES
- LEGEND**
- | | |
|-----|-------------------|
| --- | PROPERTY LINE |
| ▨ | CONCRETE SIDEWALK |
| ▧ | ASPHALT PAVING |
| ▩ | BIORETENTION AREA |
| ▭ | NEW BUILDING |
| ▭ | EXISTING BUILDING |
| --- | NEW CURB |
| --- | NEW FENCE |
- KEY NOTES**
- TRASH ENCLOSURE: CONC WALLS 9.5FT HIGH W/ STL FRAME & PRE-FINISHED 20GA CORRUGATED MTL ROOF & PTD. GALV. STL GATE
 - ST. STL. BICYCLE U-STYLE RACK (12 RACKS TOTAL)
 - ASPHALT PAVING
 - CONCRETE SIDEWALK PAVING
 - LANDSCAPE PLANTING BED; S.L.D.
 - PRE-FABRICATED BIO-RETENTION SYSTEM; S.C.D.
 - CONCRETE CURB
 - ADA CURB RAMP W/ DETECTIBLE WARNING
 - PAINTED CROSSWALK STRIPING
 - ADA PARKING STALL; SEE ACCESSIBILITY PLAN
 - PAINTED BASKETBALL STRIPING W. ADJUSTABLE POLE MOUNTED HOOP
 - CONCRETE RETAINING WALL; S.C.D.; S.L.D.
 - TRAFFIC CALMING DEVICE, PER MPED SPECIFICATIONS
 - ADA COMPLIANT CONC. SITE RAMP W/ PTD. GALV. STL HANDRAILS
 - MOTORIZED 2-PANEL PTD. GALV. SLIDING GATE W/ KEY PAD ACCESS & INTERCOM. PROVIDE ADDITIONAL KNOX KEY SWITCH FOR EMERGENCY OVERRIDE
 - PTD. GALV. FENCE GATE W/ PANIC EXIT DEVICE
 - GALV. STEEL CHAIN W/ PTD. GALV. POSTS FOR TRAFFIC CONTROL
 - PTD. GALV. STEEL MANUAL SWING GATE W/ KEY PAD ACCESS & INTERCOM. PROVIDE ADDITIONAL KNOX KEY SWITCH FOR EMERGENCY OVERRIDE
 - VEHICULAR LOADING / UNLOADING ZONE
 - LANDSCAPED BERM BTWN. GRADE AND RAISED PLINTH VARIES; S.L.D.
 - RAISED LANDSCAPED PLINTH; S.L.D.
 - 4FT HIGH STAINED CEDAR FENCE W/ PTD. GALV. 4"x4" STL POSTS
 - PREFABRICATED PLAY STRUCTURE W/ RUBBERIZED SURFACE AT FALL ZONE; S.L.D.
 - STEPPING STONES; S.L.D.
 - PLAY BRIDGE STRUCTURE; S.L.D.
 - COMPOSITE DECK; S.L.D.
 - PAINTED GALV. STEEL STRINGER STAR W/ PRECAST CONCRETE TREADS & PTD. GALV. STL. GUARD & HANDRAIL
 - CONCRETE C.I.P. STAR W/ PTD. GALV. STL. GUARD AND HANDRAILS
 - C.I.P. LANDSCAPE BENCH; S.L.D.
 - CONCRETE WHEEL STOP
 - LOW EXTERIOR CEDAR CASEWORK WALL W/ INTEGRATED STORAGE; S.L.D.
 - NEW CURB CUT
 - EXISTING CONCRETE SIDEWALK; CONDITION TO BE VERIFIED. REPLACE AS REQUIRED TO BE CONTINUOUS AND MEET ACCESSIBLE ROUTE SLOPE AND TRANSITION REQUIREMENTS, AND TO COMPLY W/ CITY REQUIREMENTS.
 - LINE OF EXISTING EDGE OF PAVEMENT
 - ASPHALT PAVING TO EXTENT FROM EDGE OF RIGHT OF WAY TO EDGE OF EXISTING STREET PAVING
 - OVERHEAD (E) POWER LINES
 - CENTERLINE OF STREET; SEE CIVIL SURVEY
 - BIORETENTION; S.C.D.
 - (E) FIRE HYDRANT; S.C.D.
 - FIRE HYDRANT; S.C.D.
 - FIRE DEPARTMENT CONNECTION (FDC); S.C.D.
 - POST INDICATOR VALVE (PIV); S.C.D.
 - BACKFLOW PREVENTER DEVICES ON CONCRETE PAD; S.C.D.
 - BFT HIGH BLACK VINYL COATED 1" MESH CHAIN LINK FENCE TO EXTEND FULL PERIMETER EXCEPT AT FRONT OF BUILDING ALONG WEEKS AS INDICATED
 - PTD. GALV. STL. GUARD & HANDRAIL WHERE OCCURS
 - FIRE ACCESS GATE
 - C.I.P. CONCRETE AMPHITHEATER SEATING
 - PROPOSED LOCATION FOR MONUMENT SIGN, UNDER SEPARATE SIGN PERMIT
 - SEE CIVIL DWG C1.00 FOR NOTES ON FUTURE CUL-DE-SAC

Studio Bondy Architecture

110 LINDEN STREET | OAKLAND, CA | 94607
510.836.8594 | studiobondy.com

PROJECT NO:
1200 WEEKS STREET | EAST PALO ALTO, CA | 94503

GENERAL CONTRACTOR
VANCE BROWN BUILDERS
3197 PARK BOULEVARD
PALO ALTO, CA 94306
CONTACT: BILL RUSSELL 650.646.2899 P
E-MAIL: BRUSSELL@VANCEBROWN.COM
SHAWN RANKIN@VANCEBROWN.COM

STRUCTURAL ENGINEER
NISHKIAN MENNINGER
1200 FOLSOM STREET
SAN FRANCISCO, CA 94113
CONTACT: PAT BENEY
415.836.9310 P
415.543.5071 F
E-MAIL: PDBENEY@NISHKIAN.COM

CIVIL ENGINEER
BKF ENGINEERS
255 SHORELINE DRIVE, SUITE 200 REDWOOD CITY, CA 94065
CONTACT: ASHLEY STANLEY
650.482.6300 P
E-MAIL: ASTANLEY@BKF.COM

LANDSCAPE ARCHITECT
SURFACE DESIGN INC
PIER 33 NORTH, The Embarcadero, Suite 200 SAN FRANCISCO, CA 94111
CONTACT: RODERICK WYLLIE
415.621.5522 P
E-MAIL: RWYLLIE@SDSF.COM

GEOTECHNICAL ENGINEER
ROCKRIDGE GEOTECHNICAL
270 GRAND AVENUE
OAKLAND, CA 94610
CONTACT: DARGO MAFFIOLI
510.420.5738 P
510.652.3096 F
E-MAIL: DANAFFIOLI@ROCKRIDGEGEO.COM

TRAFFIC ENGINEER
HIMLEY-HORN
6150 STONERIDGE MALL ROAD, SUITE 200 PLEASANTON, CA 94588
CONTACT: MIKE MOWERY
925.395.4840 P
E-MAIL: MIKE.MOWERY@HIMLEY-HORN.COM

PLANNING DEPT. RESUBMITTAL
(NOT FOR CONSTRUCTION)

PLANNING PRE-APP PACKAGE	01.19.2016
PLANNING APPLICATION	06.07.2016
PLANNING RESUBMITTAL	11.03.2017

SITE PLAN

A1.01
PLANNING DEPT. SHEET #3.4

SITE PLAN
1" = 20'-0"