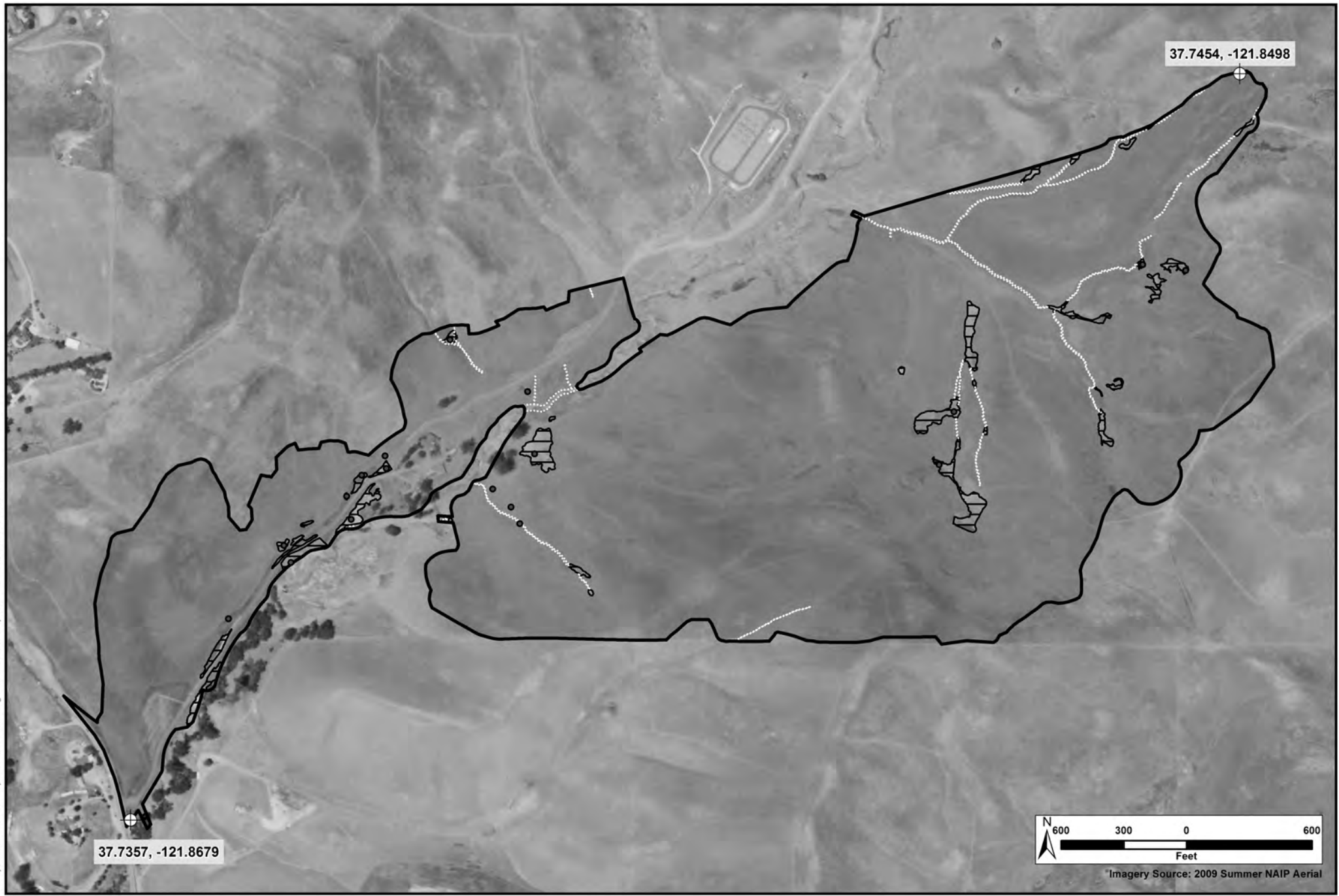


N:\Projects\33003313-01\Reports\Public Notice\Fig 1 Vicinity Map.mxd

Sources: Esri, DeLorme, NAVTEQ, USGS, Intermap, iPC, NRCAN, Esri Japan, METI, Esri China (Hong Kong), Esri (Thailand), TomTom, 2013

<p><b>FIGURE 1: PROJECT SITE LOCATION</b></p> <p><b>USACE File Number:</b> 2005-29639S  <b>APPLICATION MADE BY:</b> Braddock and Logan Services, Inc.</p>	<p><b>MOLLER RANCH RESIDENTIAL DEVELOPMENT PROJECT</b></p> <p><b>IN:</b> Jurisdictional Wetlands and Other Waters  <b>AT:</b> Moller Creek  <b>COUNTY OF:</b> Alameda  <b>STATE:</b> California</p>
---	---

N:\Projects\33001\3313-011\Reports\Public Notice\Fig 2 Jurisdictional Map of on Site Wetlands and Streams.mxd



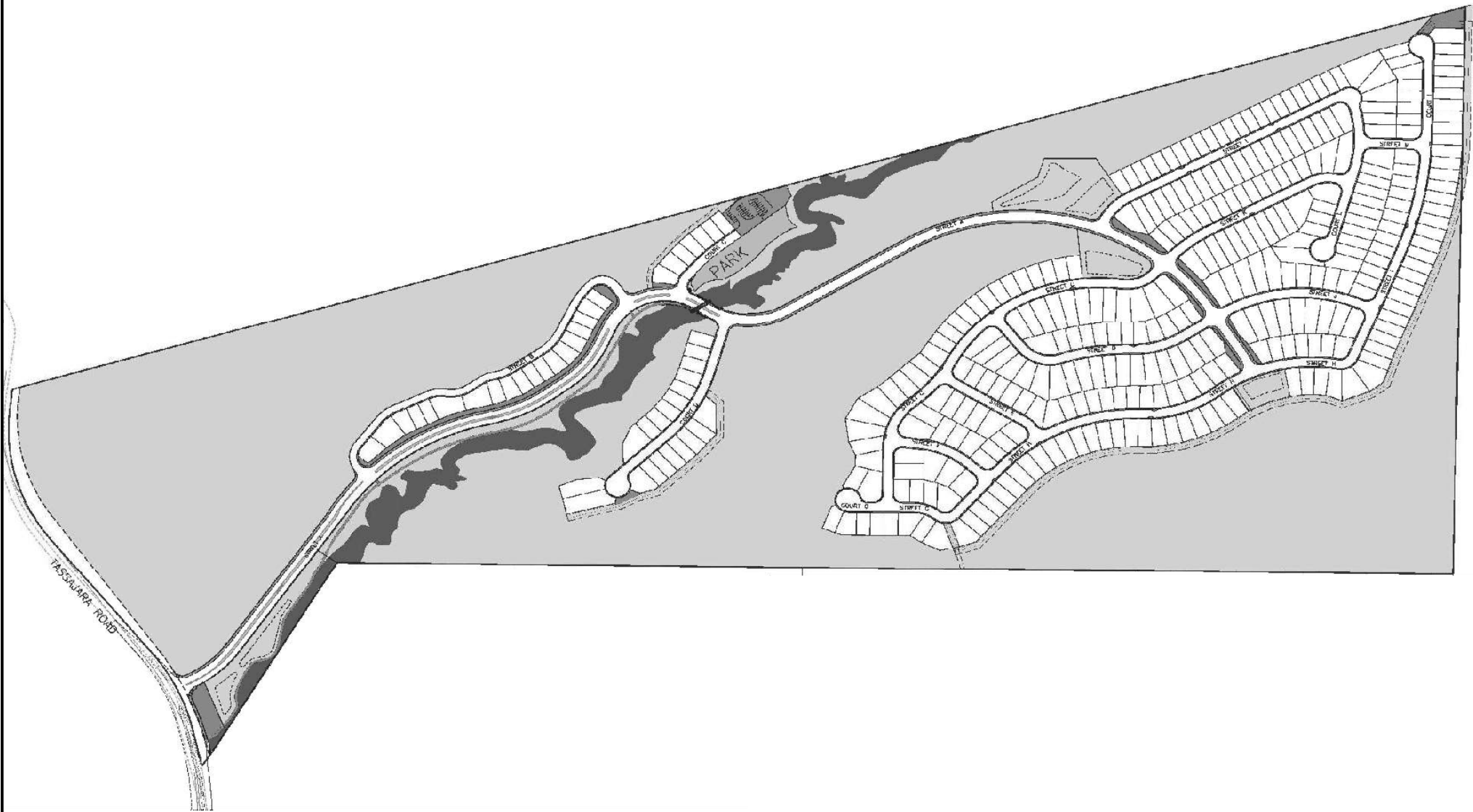
**FIGURE 2: JURISDICTIONAL MAP OF ON SITE WETLANDS AND STREAMS**

**USACE File Number:** 2005-29639S  
**APPLICATION MADE BY:** Braddock and Logan Services, Inc.

**MOLLER RANCH RESIDENTIAL DEVELOPMENT PROJECT**

**IN:** Jurisdictional Wetlands and Other Waters  
**AT:** Moller Creek  
**COUNTY OF:** Alameda  
**STATE:** California

N:\Projects\3300\3313-01\Reports\Public Notice\Fig 3 Proposed Project.mxd



**FIGURE 3: PROPOSED PROJECT**

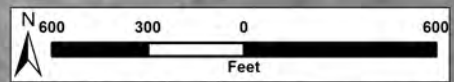
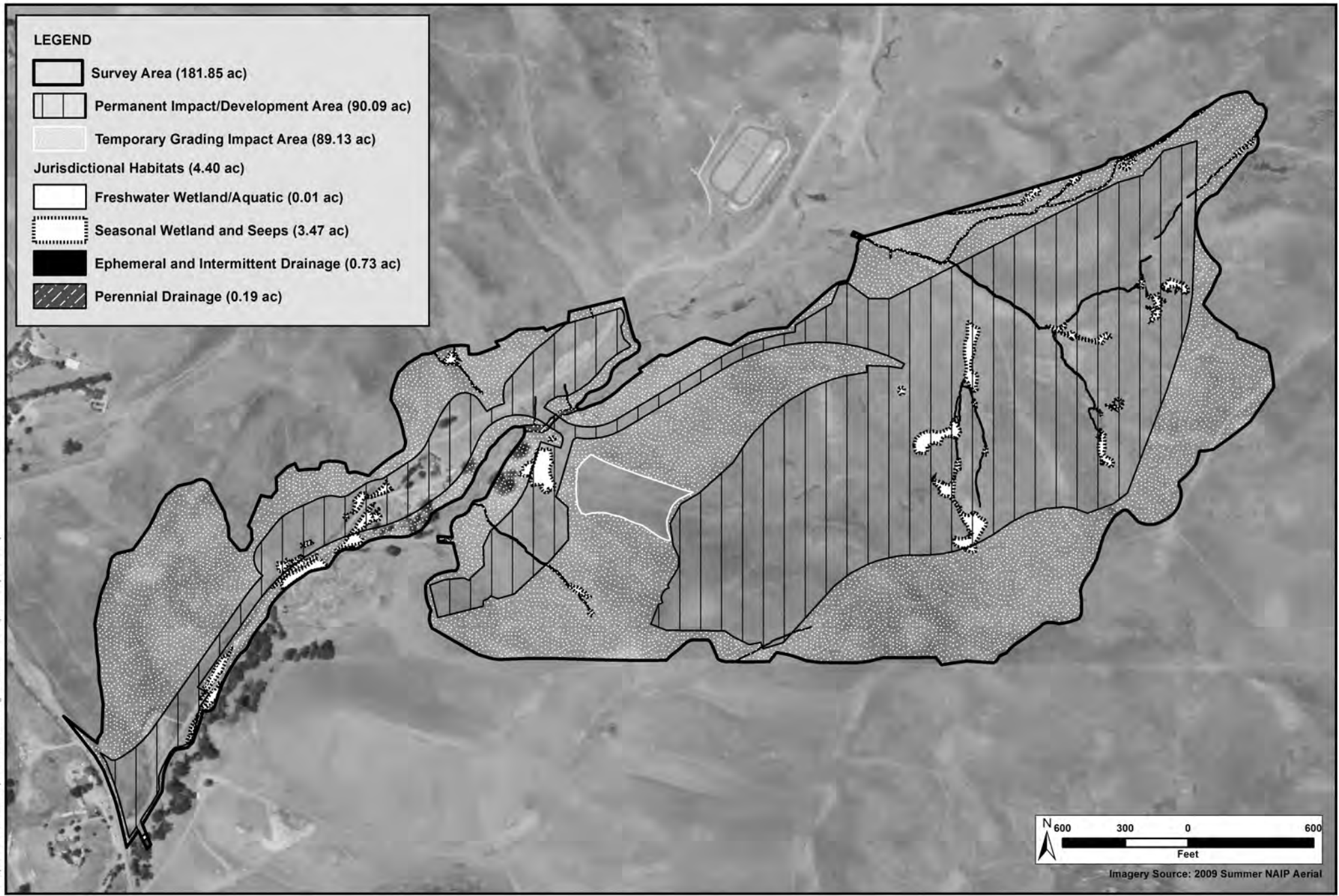
**USACE File Number:** 2005-29639S  
**APPLICATION MADE BY:** Braddock and Logan Services, Inc.

**MOLLER RANCH RESIDENTIAL DEVELOPMENT PROJECT**

**IN:** Jurisdictional Wetlands and Other Waters  
**AT:** Moller Creek  
**COUNTY OF:** Alameda  
**STATE:** California

**LEGEND**

-  Survey Area (181.85 ac)
-  Permanent Impact/Development Area (90.09 ac)
-  Temporary Grading Impact Area (89.13 ac)
- Jurisdictional Habitats (4.40 ac)**
  -  Freshwater Wetland/Aquatic (0.01 ac)
  -  Seasonal Wetland and Seeps (3.47 ac)
  -  Ephemeral and Intermittent Drainage (0.73 ac)
  -  Perennial Drainage (0.19 ac)



Imagery Source: 2009 Summer NAIP Aerial

**FIGURE 4: WATERS OF US MAP WITH PROJECT OVERLAY**

**USACE File Number:** 2005-29639S  
**APPLICATION MADE BY:** Braddock and Logan Services, Inc.

**MOLLER RANCH RESIDENTIAL DEVELOPMENT PROJECT**

**IN:** Jurisdictional Wetlands and Other Waters  
**AT:** Moller Creek  
**COUNTY OF:** Alameda  
**STATE:** California

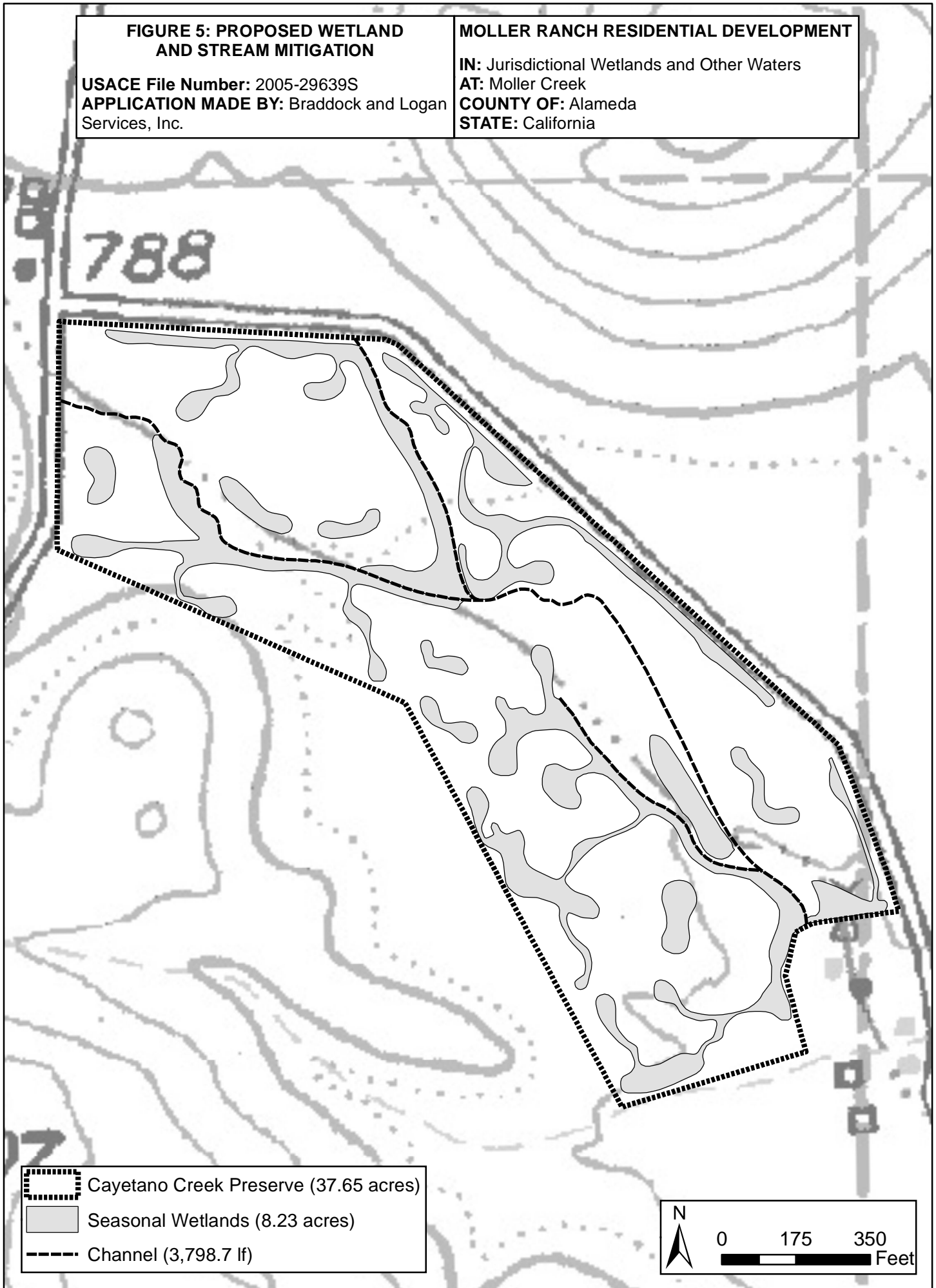
N:\Projects\330013313-011\Reports\Public Notice\Fig 4 Waters of US Map with Project Overlay.mxd

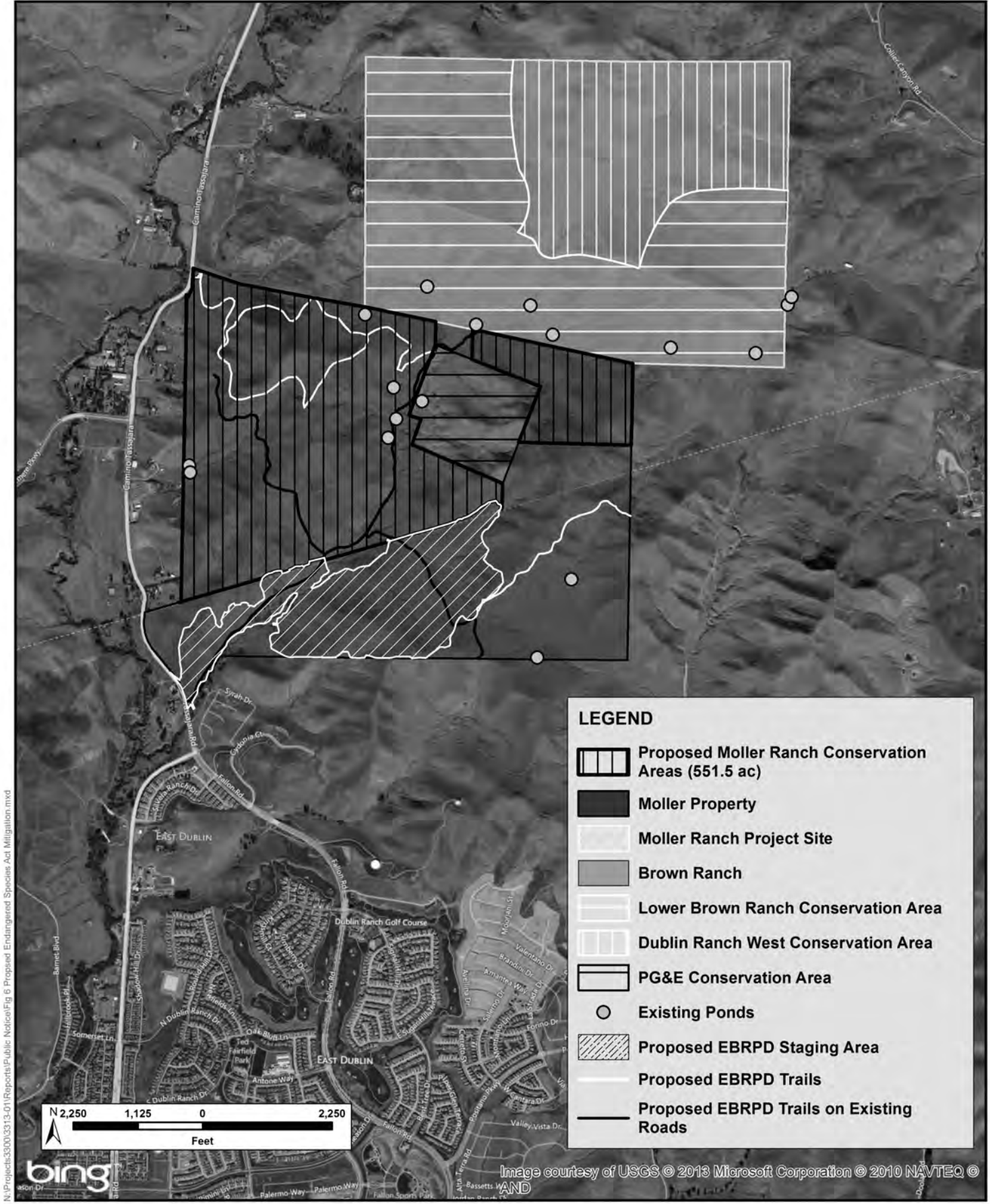
**FIGURE 5: PROPOSED WETLAND  
AND STREAM MITIGATION**

**USACE File Number:** 2005-29639S  
**APPLICATION MADE BY:** Braddock and Logan  
Services, Inc.

**MOLLER RANCH RESIDENTIAL DEVELOPMENT**

**IN:** Jurisdictional Wetlands and Other Waters  
**AT:** Moller Creek  
**COUNTY OF:** Alameda  
**STATE:** California





N:\Projects\3300\3313-01\Reports\Public Notice\Fig 6 Proposed Endangered Species Act Mitigation.mxd

**FIGURE 6: PROPOSED ENDANGERED SPECIES ACT MITIGATION**  
**USACE File Number:** 2005-29639S  
**APPLICATION MADE BY:** Braddock and Logan Services, Inc.

**MOLLER RANCH RESIDENTIAL DEVELOPMENT PROJECT**  
**IN:** Jurisdictional Wetlands and Other Waters  
**AT:** Moller Creek  
**COUNTY OF:** Alameda  
**STATE:** California