

Border Coast Regional Airport Authority  
Pacific Shores Mitigation Project

Job Number 11984-11002  
Revision A  
Date 04 Apr 2013

Habitat Mapping  
Vicinity Map

**Figure 1 - VICINITY MAP**  
**#2006-301420 / 5-9-2013**

718 Third Street Eureka, CA 95501 T 707 443 8326 F 707 444 8330 E eureka@ghd.com W www.ghd.com

G:\11984 BorderCoastRegionalAirport\BCRAA\_GIS\Maps\Figures\PacShores\_Habitat\F1\_Vicinity.mxd  
© 2012. While every care has been taken to prepare this map, GHD and BCRAA make no representations or warranties about its accuracy, reliability, completeness or suitability for any particular purpose and cannot accept liability and responsibility of any kind (whether in contract, tort or otherwise) for any expenses, losses, damages and/or costs (including indirect or consequential damage) which are or may be incurred by any party as a result of the map being inaccurate, incomplete or unsuitable in any way and for any reason.  
Data source: Del Norte County GIS; parcel data: ESRI; TIGER data. Created by: gldavidson

NOTE: This wetlands delineation map is the opinion of GHD, Inc. at the time the delineation was conducted. This map is not for planning, permitting, or construction, uses without a U.S. Army Corps of Engineers (ACEC) permit.

**US Army Corps of Engineers**  
San Francisco District  
Regulatory Branch

Wetland Delineation for Jack McNamara Field Airport (CEC) Runway Safety Area (RSA) Project, Crescent City, Del Norte County, California  
Confirmed by: Carol Heidsiek, Eureka, ACOE

Wetlands Subject To Sec 404 CWA

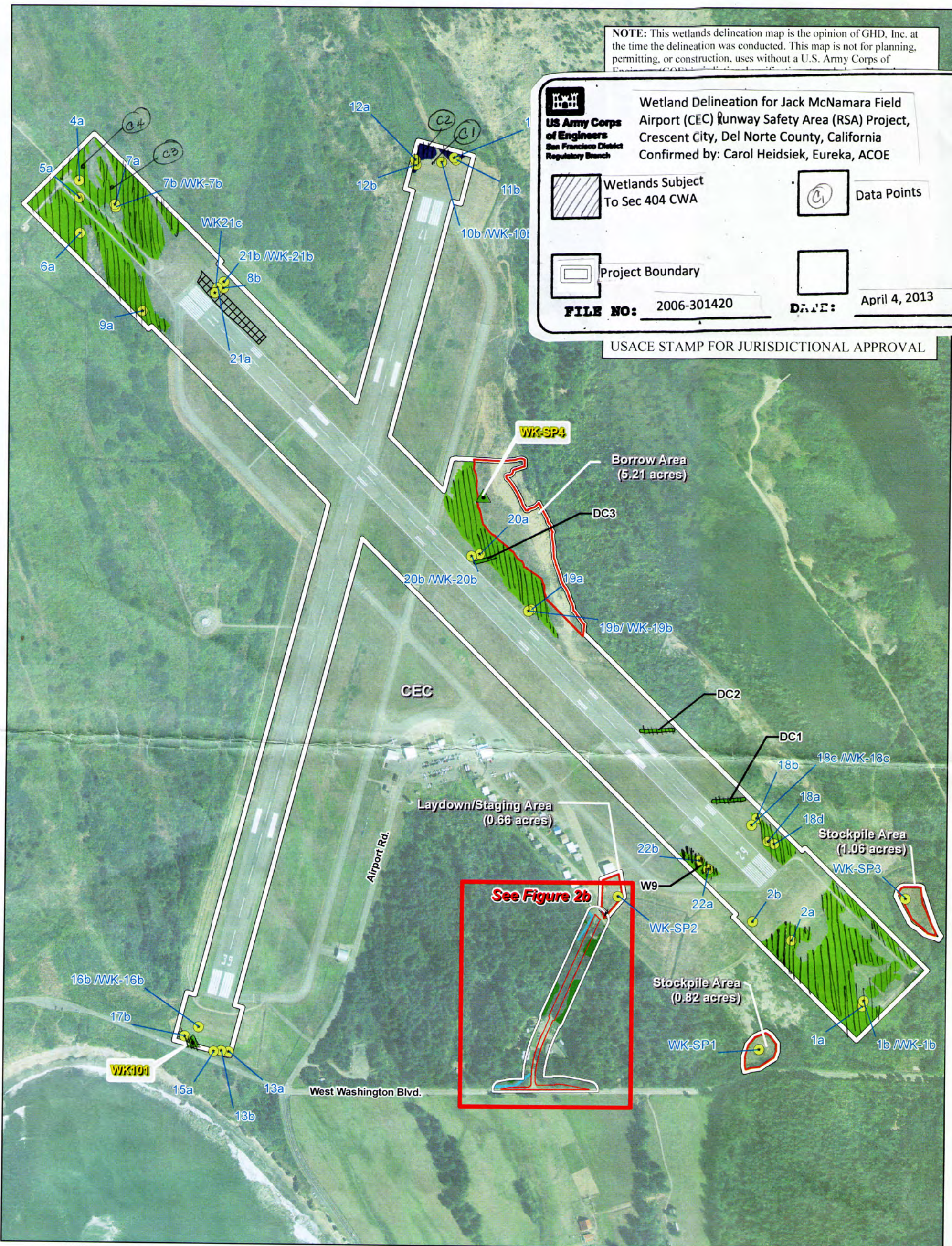
Data Points

Project Boundary

FILE NO: 2006-301420

DATE: April 4, 2013

USACE STAMP FOR JURISDICTIONAL APPROVAL



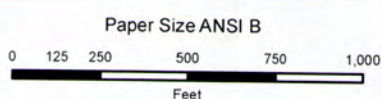
**RSA**

- Project Study Area (135.4 acres)
- Palustrine Emergent Wetland (21.52 acres)
- Palustrine Forested Wetland (0.10 acres)
- Lacustrine Emergent Wetland (0.55 acre)

- Sample Point
- Transect Point
- Drainage Channels (URS, 2009)
- Non-Wetland (0.8 acres) (GHD, Oct./Nov. 2011)
- Wetland (0.1 acres) (GHD, Oct./Nov. 2011)

**Ag Road**

- Unconsolidated Bottom Riverine Wetlands (0.07 acres)
- Palustrine Emergent Forested Wetland (0.63 acres)



Map Projection: Lambert Conformal Conic  
Horizontal Datum: North American 1983  
Grid: NAD 1983 StatePlane California I FIPS 0401 Feet

Border Coast Regional Authority  
Army Corp Revised Wetland Delineation

Job Number | 11984-11002  
Revision | B  
Date | 06 Mar 2013

**Supplemental Wetland Delineation**

**Figure 3 - CEC Project Footprint #2006-301420 / 5-9-2013**



- Recommended Roads to Remove for Mitigation (Red roads recommended for removal because removing these roads would result in the establishment of wetlands without conflicting with constraints) (23.09 acres)
- Road Not Recommended for Remove for Mitigation (Even though removing these red roads would create wetlands, removing these roads would conflict with constraints) (7.23 acres)
- Roads Retained for Access

Paper Size ANSI B  
 0 125 250 500 750 1,000  
 Feet  
 Map Projection: Lambert Conformal Conic  
 Horizontal Datum: North American 1983  
 Grid: NAD 1983 StatePlane California I FIPS 0401 Feet



Border Coast Regional Airport Authority  
 Roadway Segment Selection Methodology for Wetland Mitigation

Job Number | 8410135  
 Revision | A  
 Date | 02 Jan 2013

Road Segments Recommended for Removal to Serve as Wetland Mitigation Figure 2 - Pacific Shores Mitigation Site #2006-301420 / 5-9-2013

NIUS/Eureka/Projects/11964 BorderCoastRegionalAirportAuth/BCRAA\_GIS/Maps/Figures/RoadOptimization/F8\_RecommendedMitigationRoads.mxd  
 © 2012. While every care has been taken to prepare this map, GHD makes no representations or warranties about its accuracy, reliability, completeness or suitability for any particular purpose and cannot accept liability and responsibility of a  
 (whether in contract, tort or otherwise) for any expenses, losses, damages and/or costs (including indirect or consequential damages) which are or may be incurred by any party as a result of the map being inaccurate, incomplete or unsuitable in  
 Data source: ESRI; Bing Aerial 2011 (1 foot resolution); GHD; Recommended Roads for Removal, 12/20/12; GHD; Roads not Recommended for Removal, 12/20/12; Created by rchumbund