

Entrainment of Fish by Hydraulic Dredge at Port Sonoma Marina

David Woodbury
National Marine Fisheries Service

Brian Swedberg
Port Sonoma Marina

Acknowledgements

- Port Sonoma Marina
 - JT Wick, Ken Ries, Reese Farnan
- California Dredging
 - Jim & John Filomeo
- Zentner and Zentner
 - John Zentner
 - Lesley Drummond
- NMFS
 - Katie McGourty

Goal of the Study

- To determine fish entrainment rates
 - Identify and enumerate fish collected in effluent prior to disposal at upland sites
 - Compare entrained fish with fish collected by otter trawl in waters adjacent to the marina



© 2006 Europa Technologies
Image © 2006 TerraMetrics

© 2005 Google

Pointer 38°07'20.90" N 122°29'36.29" W elev 7 ft

Streaming ||||| 100%

Eye alt 9441 ft











Photo courtesy of Lesley Drummond



Photo courtesy of Lesley Drummond



Photo courtesy of Lesley Drummond



Photo courtesy of Lesley Drummond







Photo courtesy of Lesley Drummond



Photo courtesy of Lesley Drummond



Photo courtesy of Lesley Drummond



Photo courtesy of Lesley Drummond



Photo courtesy of Lesley Drummond



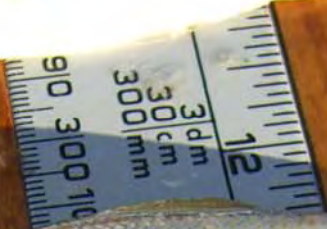




Photo courtesy of Lesley Drummond









10/31/2006



HH
Helly Hansen

10/31/2006







14



11/05/2006

Sampling Summary from the Ranch

October 31 to morning of November 5, 2006

51 hours - 27 samples

Mesh was clogged and difficult to clean, even after installing a larger box

Effluent overtopping sampling box

Non-quantitative samples

28 shimofuri goby (26 of which collected in first 30 minutes)

20 yellowfin goby

1 striped bass

1 prickly sculpin (native)

1 longfin smelt (native)







S.N. 26 12-13-06

YELLOWFIN GOBY



TL (mm)

219

186

178

172

168

155

138

134

123

STARRY FLOUNDER

123 mm TL



SHIMOFURI GOBY



50 mm TL

STICKLEBACK



56 mm TL



42 mm TL





SCULPIN

12-8-06

S.N. 19





GOBY

12-7-06

S.N. 13



Sampling Summary from the Pond

December 5-14, 2006

41 hours - 27 samples

Box worked much better (32')

Several days box was not functioning

Semi-quantitative samples

185 yellowfin goby

19 shimofuri goby

9 striped bass

1 shokihazi goby

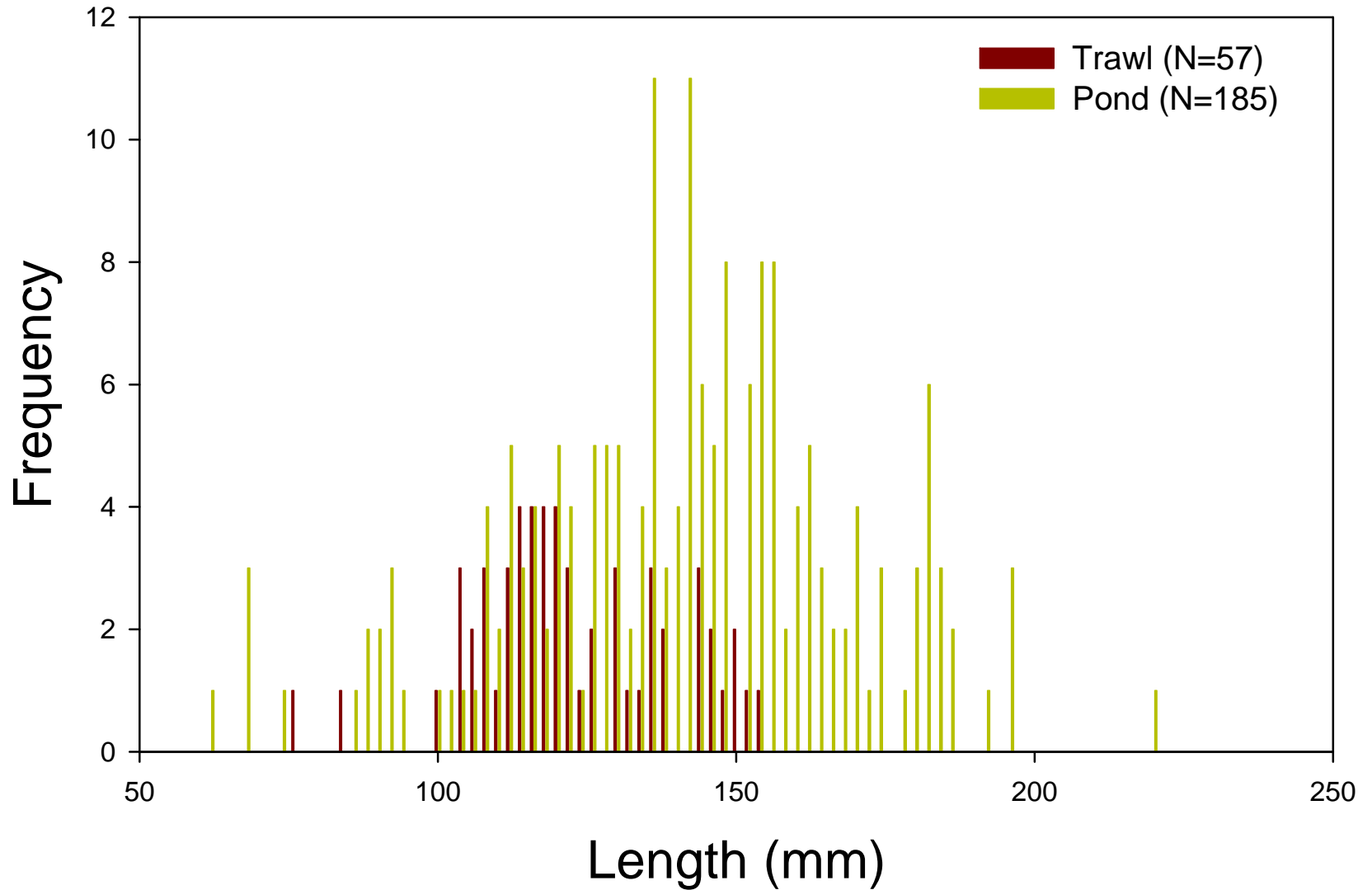
3 stickleback (native)

2 starry flounder (native)

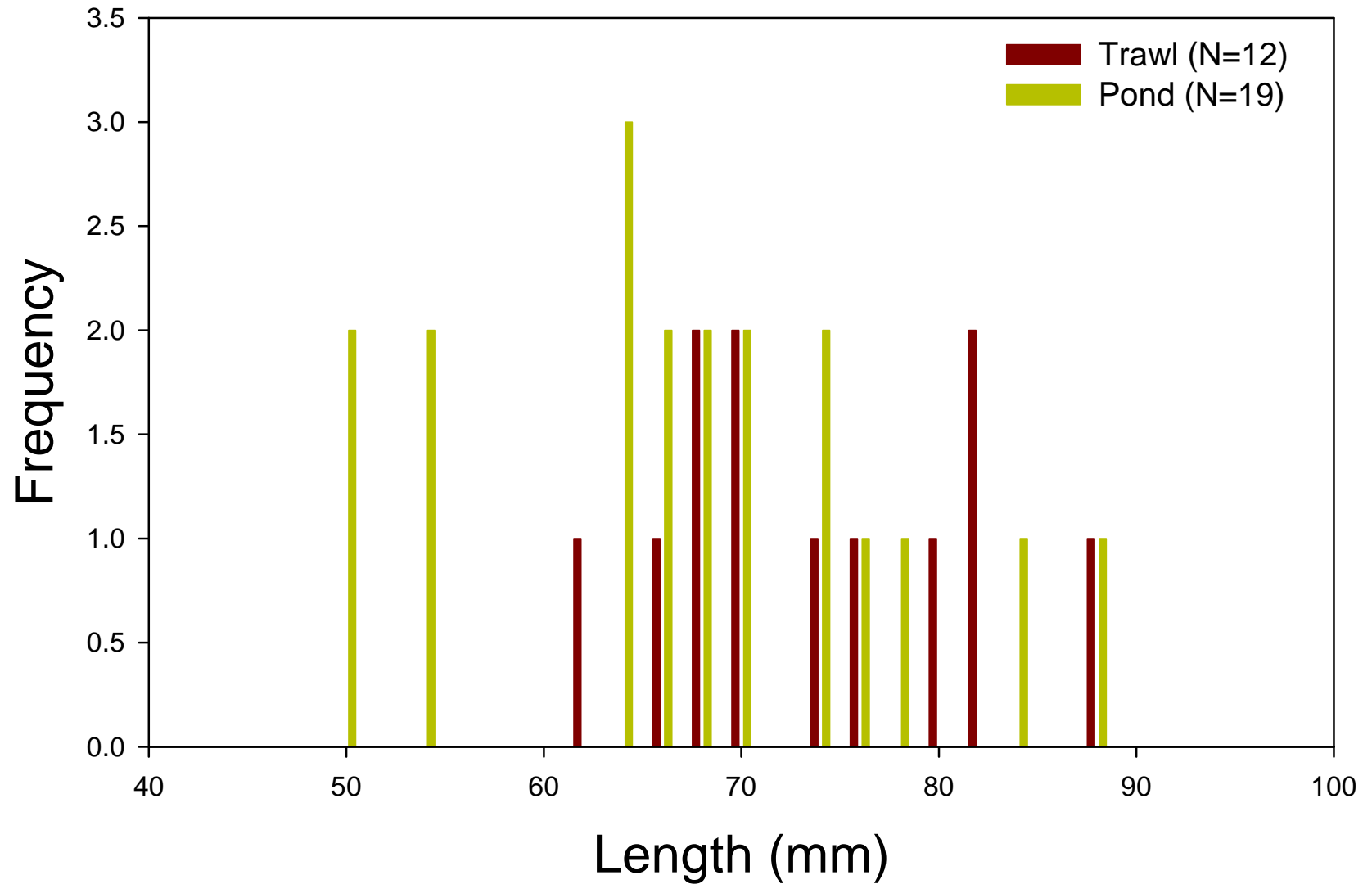
1 prickly sculpin (native)

No American shad or northern anchovy

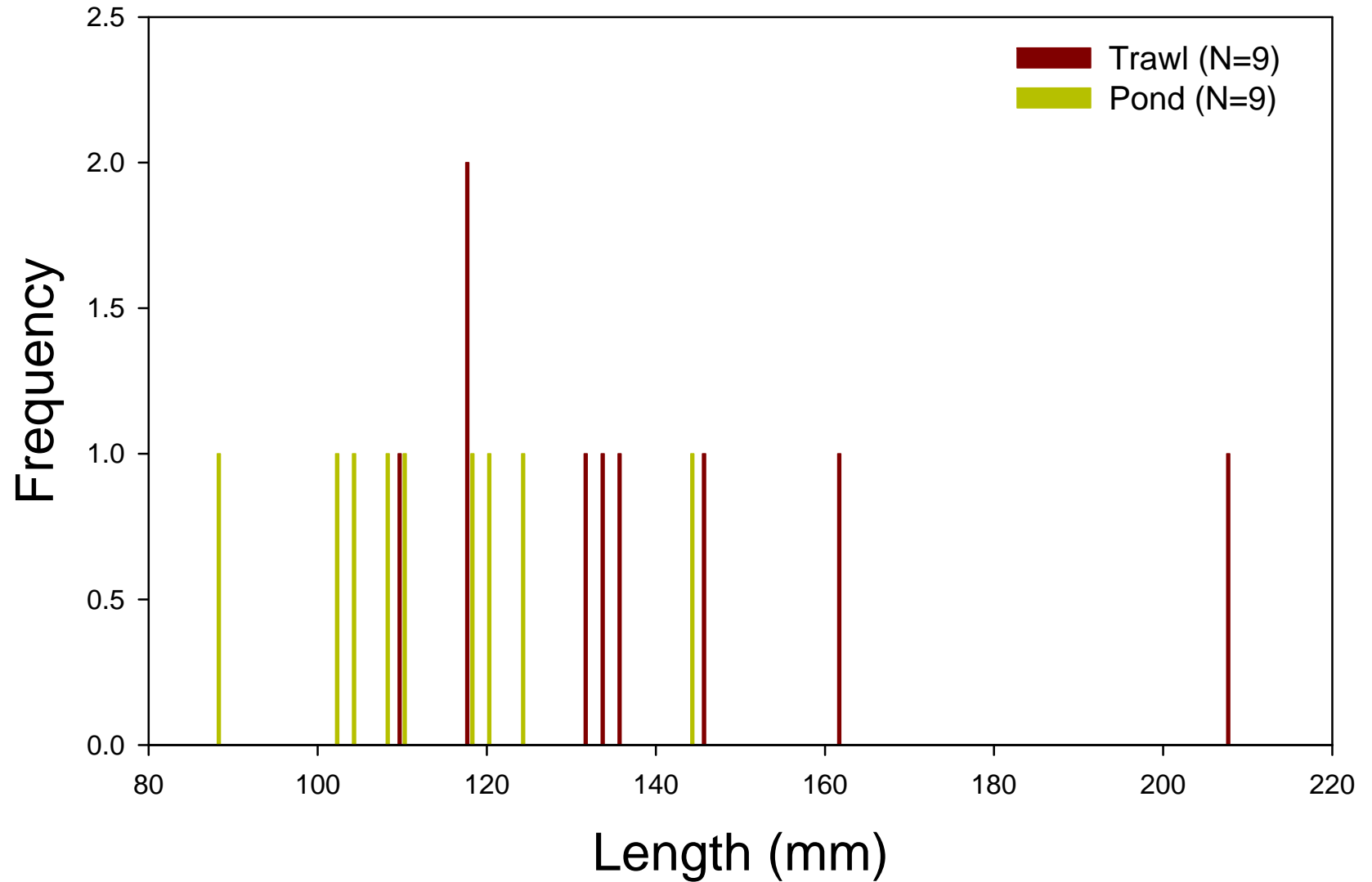
Yellowfin Goby



Shimofuri Goby



Striped Bass





**FUEL
BEER·BAIT·**

BEER·

43194





Photo courtesy of Debbe Vinje



