

San Francisco Bay Regional Dredged Material Management Plan Fact Sheet

Our Mission

The U.S. Army Corps of Engineers (USACE) is a federal water resources agency. We provide navigation, flood risk management, and ecosystem restoration solutions across the country. The San Francisco District dredges federal navigation channels in the Bay Area and along the Northern and Central California coast. Dredging is the removal of sediment from the bay bottom or ocean floor to provide sufficient depth for vessels to navigate safely.



>40,000 sq. mi
Jurisdiction



900 miles
of coastline



10 channels
dredged to support
commerce in Bay Area



1.5-2M cubic yards
of sediment dredged from
channels on average per year



\$68 Billion
Annual Maritime
Industry in Bay Area

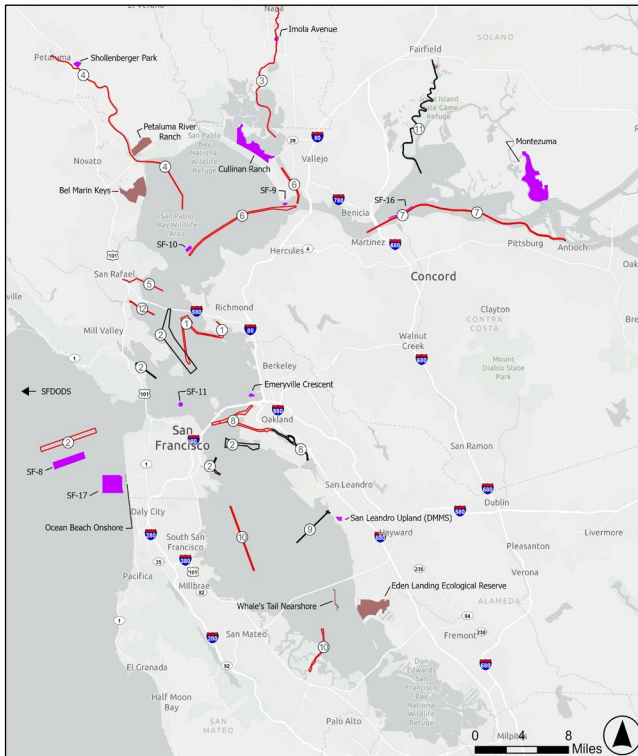


80% beneficial use
of dredged sediment for
wetlands and shoreline
improvements in 2023



USACE Clamshell Dredge in San Francisco Bay

USACE Dredging and Placement Sites



Why beneficially use dredged material?

Dredged material can be beneficially used to:

- Restore wetlands
- Nourish beaches
- Protect shorelines
- Provide sea level rise resilience
- Promote recreation & public access

Through the Regional Dredged Material Management Plan (RDMMP) we will determine how dredging will occur and where dredged material will be placed for the next 20 years in the Bay Area.

Is there a wetland, beach or shoreline that needs protection in your community?

Please email us at:

SF-Bay-Dredging@usace.army.mil.

Visit <https://go.mil/spn.usace.rdmmp> to learn more about the project.

For more information on dredging, please visit:

- [USACE Navigation Dredging](#)
- [Beneficial Use of Dredged Sediment](#)

