

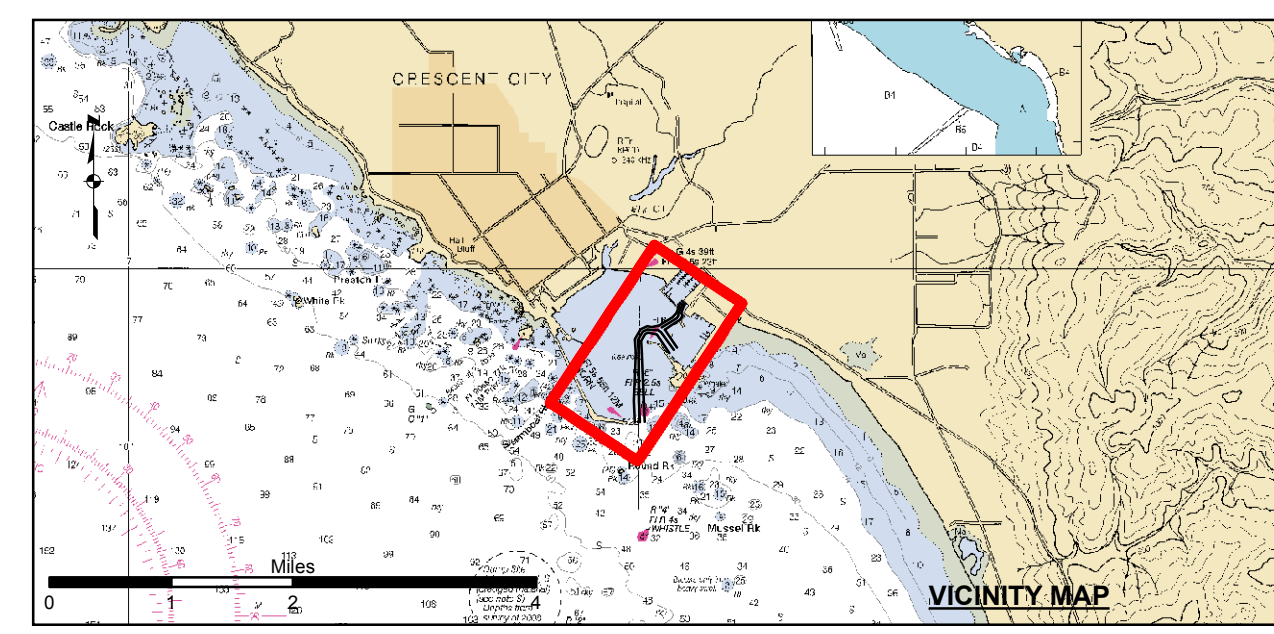
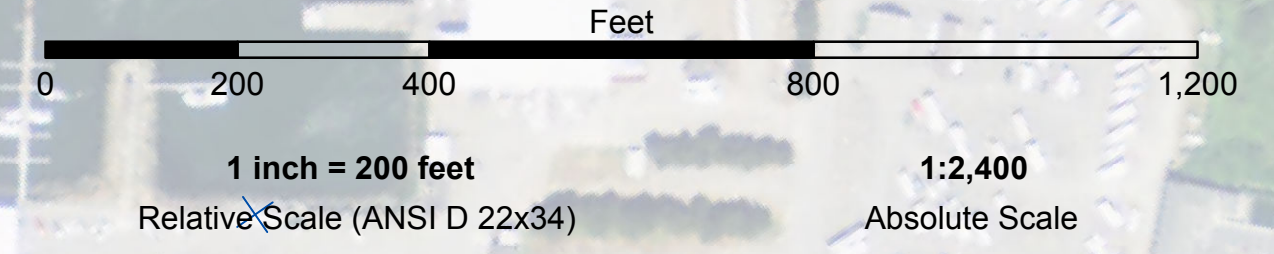
Angle Point	Easting	Northing
01	5964034.06	2523317.15
02	5964016.64	2524016.94
03	5964112.28	2525555.38
04	5964100.94	2526002.91
05	5964291.44	2526320.06
06	5964510.86	2526417.87
07	5964640.82	2526387.82
08	5964896.75	2526428.90
09	5965340.91	2526683.00
10	5965466.85	2526813.90
11	5965566.98	2527049.75
12	5965533.54	2527090.90
13	5965656.54	2527207.90
14	5965741.54	2527102.90
15	5965617.15	2526809.28
16	5965658.54	2526720.90
17	5965589.54	2526594.90
18	5965354.54	2526471.90
19	5965075.79	2526287.40
20	5964548.87	2525702.48
21	5965208.23	2525530.41
22	5965004.97	2525845.23
23	5964811.88	2526142.53
24	5964530.87	2526207.95
25	5964430.39	2526163.01
26	5964302.32	2525949.44
27	5964312.18	2525550.74
28	5964336.54	2524024.90
29	5964353.96	2523325.11
C01	5964194.01	2523321.13
C02	5964176.59	2524020.92
C03	5964212.14	2525553.06
C04	5964201.63	2525976.17
C05	5964360.92	2526241.54
C06	5964520.76	2526312.91
C07	5964618.13	2526290.37
C08	5964854.32	2526285.71
C09	5964948.91	2526207.67
C10	5965351.62	2526304.45
C11	5964981.68	2526361.78
C12	5965473.68	2526652.44
C13	5965525.97	2526721.89
C14	5965541.25	2526811.61
C15	5965555.12	2527079.88
C16	5965590.20	2527144.80

PRELIMINARY ISSUE
THIS PLAN ISSUED FOR
ADVANCE INFORMATION ONLY

Crescent City

Bertsch-Oceanview

FLOOD →
← EBB



Federal Navigation Channel	Beacon, General	Contours
Shoaling Area	Obstruction Point	
Placement Area	Navigation Buoy	
Anchorage Area	Navigation Buoy	
Wreck Area	Shoalest Sounding*	
Submerged Wreck		-15
Angle Point		-14
		-13
		-12
		-11

NOTES:
DRAWING NOT TO BE USED FOR NAVIGATION. ONLY CHANNEL CONDITION AT DATE OF SURVEY.
THE LOCATION OF ALL NAVIGATION AIDS ARE BASED ON INFORMATION PROVIDED BY THE U.S. COAST GUARD. BUOY LOCATIONS REPRESENT THE POSITION OF THE SINKER ONLY.
SURVEYED BY U.S. ARMY CORPS OF ENGINEERS, SAN FRANCISCO DISTRICT.
SOUNDINGS ARE ACQUIRED BY FATHOMETER AND ARE SHOWN TO THE NEAREST TENTH OF A FOOT.
VERTICAL AND HORIZONTAL CONTROL: USC&GS DISK "BM TIDAL 20 1959 RESET 1060" LOCATED NEAR THE NORTH EAST CORNER OF CITIZEN DOCK. ELEV. 13.46' MLLW. (1985-2001 EPOCH); N 252793.45, E 5965753.79.
HORIZONTAL POSITIONING OBTAINED USING LEICA 120 RTK SYSTEM.
SOUNDINGS ARE BASED ON THE DATUM OF MEAN LOWER LOW WATER AT THE LOCALITY.
THE PROJECT DEPTH IS 15 FEET.

US Army Corps of Engineers
San Francisco District
1455 Market Street
San Francisco, CA 94103

DISCLAIMER
The United States Government furnishes express or implied warranties, completeness, accuracy, or reliability of the data for other than the intended purpose. The user is responsible for the results of any application of the data for other than the intended purpose. These data belong to the Government. Therefore the recipient may not transfer these data to others without also transferring this Disclaimer.

Chart Date:	Sep 05, 2014
Designed by:	PDT
Plotted By:	PDT
Checked By:	PDT
Drawn by:	PDT

CALIFORNIA
DEL NORTE COUNTY
**CRESCENT CITY
CONDITION SURVEY
03 SEPTEMBER 2014**

**Sheet
Reference
Number
1 of 1**