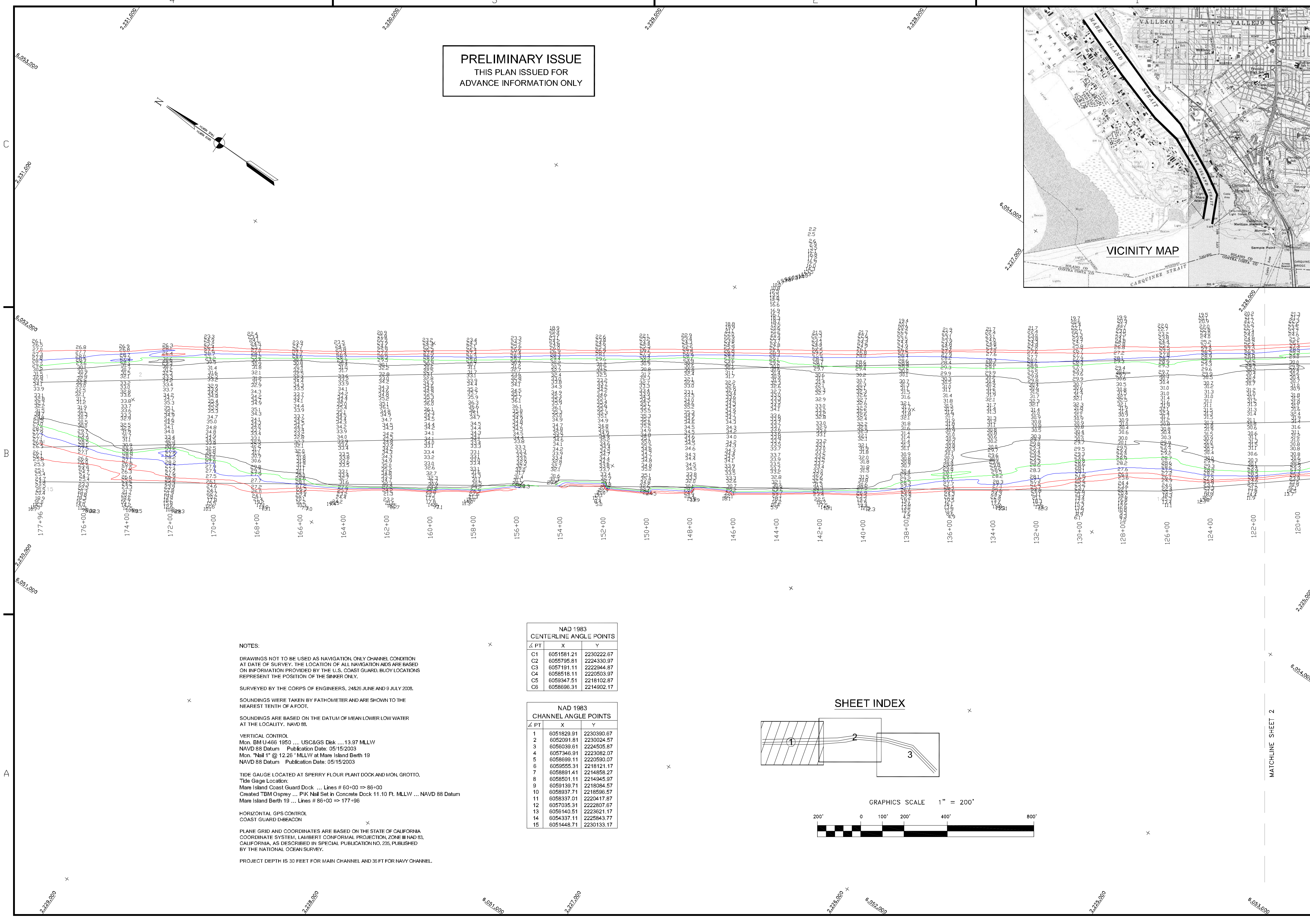
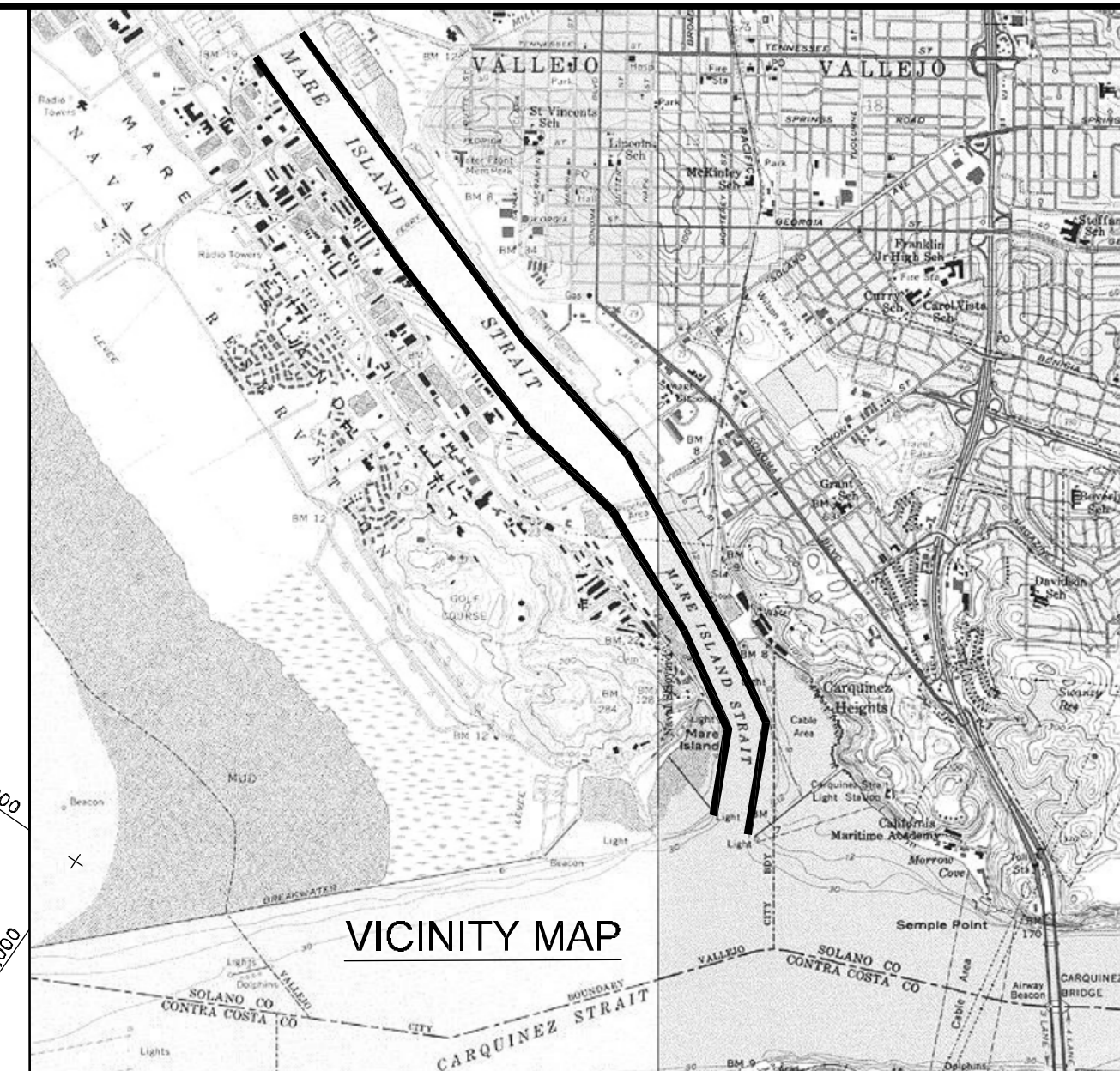
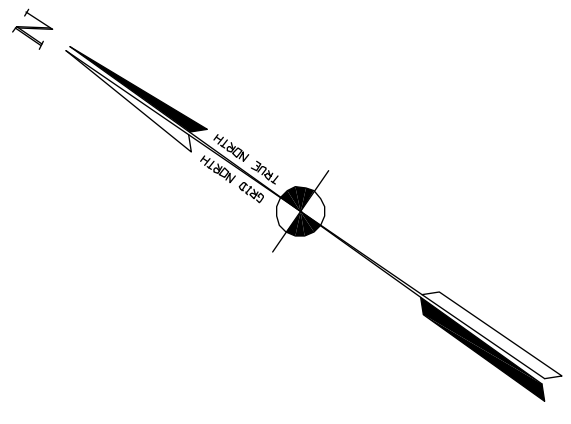


PRELIMINARY ISSUE
THIS PLAN ISSUED FOR
ADVANCE INFORMATION ONLY



NOTES:

DRAWINGS NOT TO BE USED AS NAVIGATION. ONLY CHANNEL CONDITION AT DATE OF SURVEY. THE LOCATION OF ALL NAVIGATION AIDS ARE BASED ON INFORMATION PROVIDED BY THE U.S. COAST GUARD. BUOY LOCATIONS REPRESENT THE POSITION OF THE SINKER ONLY.

SURVEYED BY THE CORPS OF ENGINEERS, 24&25 JUNE AND 9 JULY 2008.

SOUNDINGS WERE TAKEN BY FATHOMETER AND ARE SHOWN TO THE NEAREST TENTH OF A FOOT.

SOUNDINGS ARE BASED ON THE DATUM OF MEAN LOWER LOW WATER AT THE LOCALITY. NAVD 88.

VERTICAL CONTROL
Mon. BM U468 1950 ... USC&GS Disk ... 13.97 MLLW
NAVD 88 Datum Publication Date: 05/15/2003
Mon. "Nail 1" @ 12.26 ' MLLW at Mare Island Berth 19
NAVD 88 Datum Publication Date: 05/15/2003

TIDE GAUGE LOCATED AT SPERRY FLOUR PLANT DOCK AND MON. GROTTO.
Tide Gauge Location:
Mare Island Coast Guard Dock ... Lines # 60+00 ⇒ 86+00
Created TBM Osprey ... PIK Nail Set in Concrete Dock 11.10 FL. MLLW ... NAVD 88 Datum
Mare Island Berth 19 ... Lines # 86+00 ⇒ 177+96

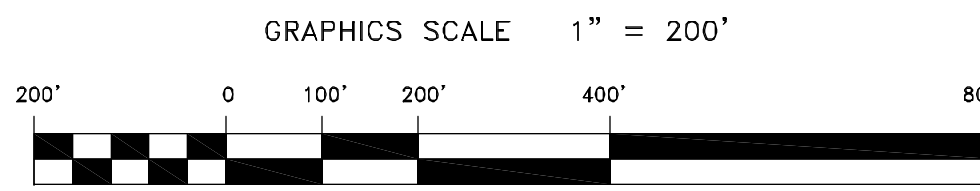
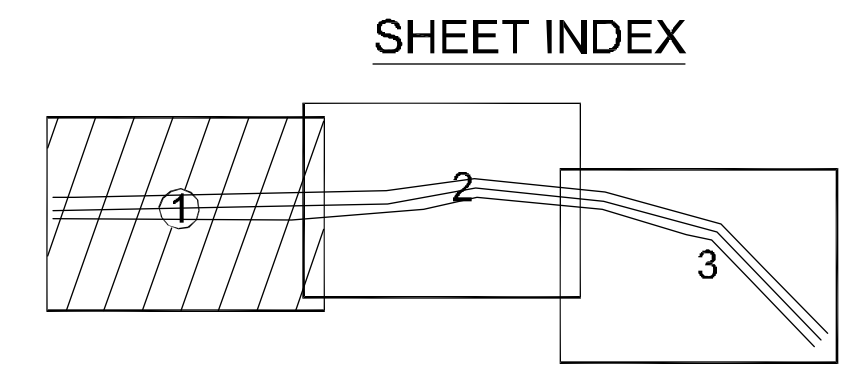
HORIZONTAL GPS CONTROL
COAST GUARD D-BEACON

PLANE GRID AND COORDINATES ARE BASED ON THE STATE OF CALIFORNIA COORDINATE SYSTEM, LAMBERT CONFORMAL PROJECTION, ZONE III NAD 83, CALIFORNIA, AS DESCRIBED IN SPECIAL PUBLICATION NO. 235, PUBLISHED BY THE NATIONAL OCEAN SURVEY.

PROJECT DEPTH IS 30 FEET FOR MAIN CHANNEL AND 35 FT FOR NAVY CHANNEL.

| NAD 1983 CENTERLINE ANGLE POINTS | | |
|-------------------------------------|------------|------------|
| △ PT | X | Y |
| C1 | 6051581.21 | 2230222.67 |
| C2 | 6055795.81 | 2224330.97 |
| C3 | 6057191.11 | 2222944.87 |
| C4 | 6058518.11 | 2220503.97 |
| C5 | 6059347.51 | 2218102.87 |
| C6 | 6058696.31 | 2214902.17 |

| NAD 1983 CHANNEL ANGLE POINTS | | |
|----------------------------------|------------|------------|
| △ PT | X | Y |
| 1 | 6051829.91 | 2230390.67 |
| 2 | 6052091.81 | 2230024.57 |
| 3 | 6056039.61 | 2224505.87 |
| 4 | 6057346.91 | 2223082.07 |
| 5 | 6058699.11 | 2220590.07 |
| 6 | 6059555.31 | 2218121.17 |
| 7 | 6058931.41 | 2214858.27 |
| 8 | 6058501.11 | 2214945.97 |
| 9 | 6059139.71 | 2218084.57 |
| 10 | 6058937.71 | 2218596.57 |
| 11 | 6058337.01 | 2220417.87 |
| 12 | 6057035.31 | 2222807.67 |
| 13 | 6056140.51 | 2223621.17 |
| 14 | 6054337.11 | 2225943.77 |
| 15 | 6051448.71 | 2230133.17 |



US Army Corps of Engineers
San Francisco District
1455 Market Street
San Francisco, CA 94103

| Mark | Description | Date | Appr. |
|------|-------------|------|-------|
| | | | |
| | | | |
| | | | |
| | | | |
| | | | |
| | | | |
| | | | |
| | | | |
| | | | |
| | | | |

| DESIGNED BY: | CHECKED BY: | DRAWN BY: |
|----------------------------------|--------------------------------------|----------------|
| MC | TYW | EVC |
| Hydro Survey Team Leader | | |
| APPROVAL RECOMMENDED: | DATE: | SHEET NO. / OF |
| Chief, Technical Support Section | 8/14/2008 | 1 OF 3 |
| APPROVED: | PREPARED UNDER THE DIRECTION OF | 2 / 447 |
| Chief, Construction Branch | LAURENCE M. FARRELL | |
| | LT. COLONEL, C.E., DISTRICT ENGINEER | |

SOLANO COUNTY CALIFORNIA
MARE ISLAND STRAIT
CONDITION SURVEY
24 & 26 JUNE
9 JULY 2008

Sheet reference number
C1