

4

3

2

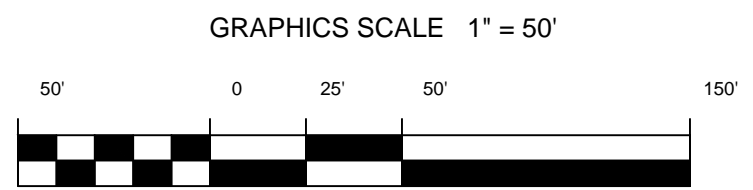
1

PRELIMINARY ISSUE
THIS PLAN ISSUED FOR
ADVANCE INFORMATION ONLY

SHEET INDEX

LEGEND:

—	-10'
—	-9'
—	-8'
—	-7'
—	-6'



NOTES:

DRAWINGS NOT TO BE USED AS NAVIGATION. ONLY CHANNEL CONDITION AT DATE OF SURVEY. THE LOCATION OF ALL NAVIGATION AIDS ARE BASED ON INFORMATION PROVIDED BY THE U.S. COAST GUARD BUOY LOCATIONS REPRESENT THE POSITION OF THE SINKER ONLY.

SURVEYED BY THE CORPS OF ENGINEERS.

SOUNDINGS ARE TAKEN BY FATHOMETER AND ARE SHOWN TO THE NEAREST FOOT AND TENTHS OF A FOOT.

SOUNDINGS ARE BASED ON THE DATUM OF MEAN LOWER LOW WATER AT THE LOCALITY.

PLANE GRID AND COORDINATES ARE BASED ON THE STATE OF CALIFORNIA COORDINATE SYSTEM, LAMBERT CONFORMAL PROJECTION, ZONE II NAD 83, CALIFORNIA, AS DESCRIBED IN SPECIAL PUBLICATION NO. 235, PUBLISHED BY THE NATIONAL OCEAN SURVEY.

SOUNDINGS ARE BASED ON TIDE GAGE REFERENCED TO COE MON. "BAKER" A STANDARD BRASS DISK LOCATED ON THE NORTH JETTY AT STA. 2+79.36 OF TRAVERSE LINE, ELEV. 13.98'. THE DATUM OF MEAN LOWER LOW WATER AT THE LOCALITY AS REVISED ON 2 FEB 1965.

PROJECT DEPTH IS 10 FEET.

NAD 83 CHANNEL ANGLE POINTS

CHANNEL Δ PTS	X	Y
1	6050288.98	2286973.23
2	6050907.48	2286814.23
3	6050931.58	2286815.23
4	6051001.41	2286820.12
5	6051403.98	2286848.63
6	6051499.68	2286855.73
7	6051597.98	2286841.53
8	6051685.28	2286793.03
9	6051752.98	2286719.43
10	6051802.88	2286632.53
11	6051831.38	2286535.83
12	6051843.48	2286433.23
13	6051831.88	2286287.43
14	6051787.78	2285974.53
15	6051805.28	2285840.53
16	6051835.58	2285744.63
17	6051877.28	2285652.73
18	6051923.38	2285563.03
19	6051977.78	2285479.33
20	6052040.08	2285401.03
21	6052077.88	2285367.63
22	6052122.78	2285346.23
23	6052170.88	2285332.93
24	6052235.18	2285325.83
25	6052335.48	2285377.23
26	6052421.78	2285443.43
27	6052493.18	2285560.83
28	6052572.18	2285516.13
29	6052509.68	2285485.83
30	6052456.78	2285338.13
31	6052387.58	2285269.13
32	6052320.38	2285222.73
33	6052252.28	2285195.03
34	6052191.98	2285196.73
35	6052097.88	2285229.63
36	6052013.38	2285283.03
37	6051939.48	2285350.73
38	6051871.88	2285424.23
39	6051810.38	2285502.53
40	6051752.88	2285584.43
41	6051707.18	2285673.83
42	6051672.88	2285767.93
43	6051650.58	2285865.63
44	6051643.88	2285965.93
45	6051694.48	2286429.73
46	6051684.98	2286505.63
47	6051665.48	2286574.23
48	6051637.58	2286635.43
49	6051600.38	2286683.83
50	6051556.58	2286716.13
51	6051495.28	2286740.33
52	6051410.88	2286748.23
53	6051008.42	2286719.98
54	6050938.58	2286715.23
55	6050898.48	2286713.23
56	6050275.88	2286876.23

NAD 83 CENTERLINE ANGLE POINTS

CHANNEL Δ PTS	X	Y
1	6050288.98	2286924.23
2	6050302.98	2286763.23
3	6050335.16	2286765.23
4	6051005.08	2286769.23
5	6051407.48	2286798.23
6	6051497.48	2286797.23
7	6051577.28	2286778.23
8	6051642.88	2286738.23
9	6051695.28	2286677.23
10	6051735.08	2286603.23
11	6051758.18	2286520.23
12	6051768.98	2286433.23
13	6051757.48	2286293.23
14	6051715.78	2285969.23
15	6051726.38	2285870.23
16	6051734.08	2285824.23
17	6051771.38	2285709.23
18	6051814.98	2285618.23
19	6051866.88	2285532.23
20	6051924.78	2285451.23
21	6051976.68	2285391.23
22	6052004.68	2285360.23
23	6052045.68	2285325.23
24	6052110.38	2285287.23
25	6052193.78	2285262.23
26	6052243.68	2285260.23
27	6052295.78	2285283.23
28	6052361.48	2285322.23
29	6052414.98	2285370.23
30	6052468.78	2285428.23
31	6052532.68	2285538.23

MATCHLINE - SHEET 2

US Army Corps
of Engineers
San Francisco District
333 Market Street
San Francisco, CA 94105

DESIGNED BY:	PDT	CHECKED BY:	PDI	DATE:	2/2/2016	DRAWING NO.:	1 OF 2	SHEET NO.:	12	PREPARED UNDER THE DIRECTION OF:	JOHN C. MORROW
APPROVAL RECOMMENDED:		APPROVED:								LT. COLONEL, C.E., DISTRICT ENGINEER	

SONOMA COUNTY
NOYO RIVER
CONDITION SURVEY
5 JANUARY 2015

Sheet reference
number
C1