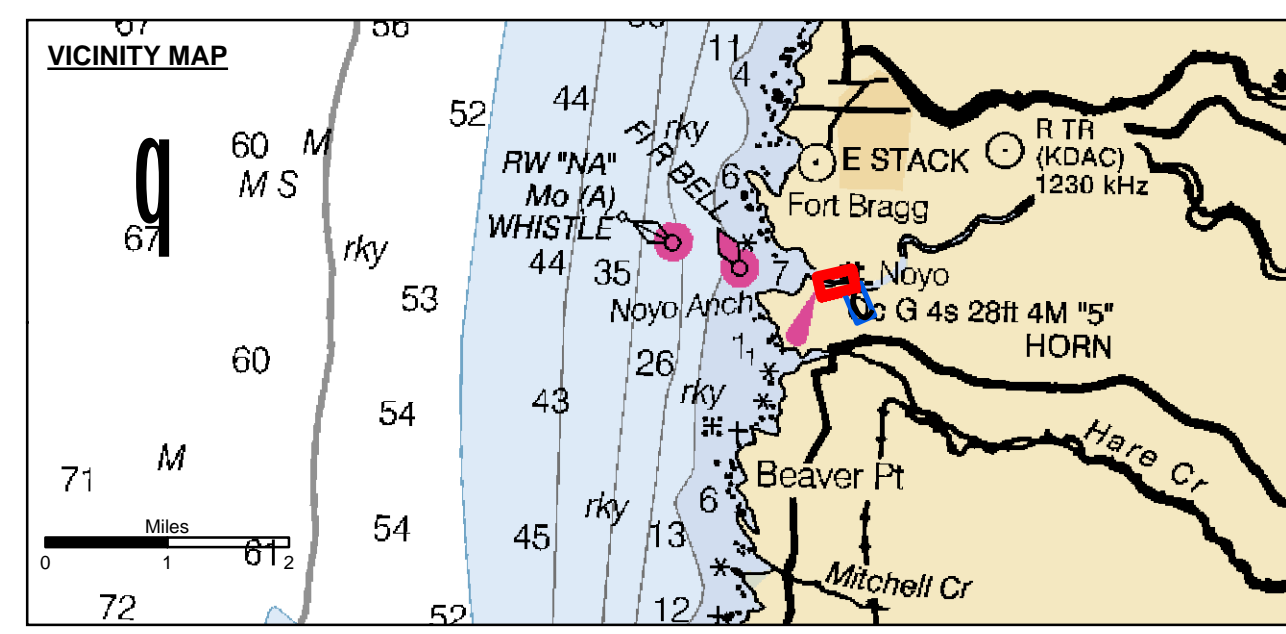


Angle Point	Easting	Northing *
01	6050288.98	2286973.23
02	6050907.48	2286814.23
03	6050931.58	2286815.23
04	6051001.41	2286820.12
05	6051403.98	2286848.83
06	6051499.68	2286855.73
07	6051597.98	2286841.53
08	6051685.28	2286793.03
09	6051752.98	2286719.43
10	6051802.88	2286632.53
11	6051831.38	2286535.83
12	6051843.48	2286433.23
13	6051831.88	2286287.43
14	6051787.78	2285974.53
15	6051805.28	2285840.53
16	6051835.58	2285744.63
17	6051877.28	2285652.73
18	6051923.38	2285563.03
19	6051977.78	2285479.33
20	6052040.08	2285401.03
21	6052077.88	2285367.63
22	6052122.78	2285346.23
23	6052170.88	2285332.93
24	6052235.18	2285325.83
25	6052335.48	2285377.23
26	6052421.78	2285443.43
27	6052493.18	2285560.83
28	6052572.18	2285518.13
29	6052509.68	2285495.83
30	6052456.78	2285338.13
31	6052387.58	2285269.13
32	6052320.38	2285222.73
33	6052252.28	2285195.73
34	6052191.98	2285196.73
35	6052097.88	2285229.63
36	6052013.38	2285283.03
37	6051939.48	2285350.73
38	6051871.88	2285424.23
39	6051810.38	2285502.53
40	6051752.68	2285584.43
41	6051707.18	2285673.83
42	6051672.88	2285767.93
43	6051650.58	2285865.63
44	6051643.88	2285965.93
45	6051694.48	2286429.73
46	6051684.98	2286505.63
47	6051665.48	2286574.23
48	6051637.58	2286635.43
49	6051600.38	2286683.83
50	6051556.58	2286716.13
51	6051495.28	2286740.33
52	6051410.88	2286748.23
53	6051008.42	2286719.98
54	6050938.58	2286715.23
55	6050898.48	2286713.23
56	6050275.88	2286878.23

Angle Point	Easting	Northing *
C01	6050288.98	2286924.23
C02	6050902.98	2286763.23
C03	6050935.18	2286765.23
C04	6051005.08	2286769.23
C05	6051407.48	2286798.23
C06	6051497.48	2286797.23
C07	6051577.28	2286778.23
C08	6051642.88	2286738.23
C09	6051695.28	2286877.23
C10	6051735.08	2286803.23
C11	6051758.18	2286520.23
C12	6051768.98	2286433.23
C13	6051757.48	2286293.23
C14	6051715.78	2285969.23
C15	6051726.38	2285870.23
C16	6051734.08	2285824.23
C17	6051771.38	2285709.23
C18	6051814.98	2285618.23
C19	6051966.88	2285532.23
C20	6051924.78	2285451.23
C21	6051976.68	2285391.23
C22	6052004.68	2285380.23
C23	6052045.68	2285325.23
C24	6052110.38	2285287.23
C25	6052193.78	2285262.23
C26	6052243.68	2285260.23
C27	6052295.78	2285283.23
C28	6052361.48	2285322.23
C29	6052414.98	2285370.23
C30	6052468.78	2285428.23
C31	6052532.68	2285538.23



Federal Navigation Channel	Beacon, General	Contours
Shoaling Area	Obstruction Point	-10
Placement Area	Navigation Buoy	-9
Anchorage Area	Navigation Buoy	-8
Wreck Area	Shoalest Sounding*	-7
Submerged Wreck		-6
Angle Point		

NOTES:

HORIZONTAL COORDINATE SYSTEM: NORTH AMERICAN DATUM OF 1983 (NAD83), PROJECTED TO THE STATE PLANE COORDINATE SYSTEM (SPCS), CALIFORNIA ZONE II. DISTANCE UNITS IN U.S. SURVEY FEET.

VERTICAL DATUM: SOUNDINGS ARE SHOWN IN FEET AND INDICATE DEPTHS BELOW MEAN LOWER LOW WATER.

THE INFORMATION DEPICTED ON THIS MAP REPRESENTS THE RESULTS OF A SURVEY CONDUCTED ON THE DATE INDICATED AND CAN ONLY BE CONSIDERED TO REPRESENT THE GENERAL CONDITION EXISTING AT THAT TIME.

PLANE GRID, BEARING AND COORDINATES ARE BASED ON THE STATE OF CALIFORNIA COORDINATE SYSTEM, LAMBERT CONFORMAL PROJECTION, ZONE II NAD 83, CALIFORNIA, AS DESCRIBED IN SPECIAL PUBLICATION NO. 235, PUBLISHED BY NATIONAL OCEAN SURVEY.

BASE MAPS ARE USDA NAIP 2010.

\*SHOALEST SOUNDING PER QUARTER PER REACH

DRAWING NOT TO BE USED FOR NAVIGATION. ONLY CHANNEL CONDITION AT DATE OF SURVEY. THE LOCATION OF ALL NAVIGATION AIDS ARE BASED ON INFORMATION PROVIDED BY THE U.S. COAST GUARD. BUOY LOCATIONS REPRESENT THE POSITION OF THE SINKER ONLY.

SURVEYED BY GBA, 10/31/2016 AND 11/1/2016

SOUNDINGS FOR THE OUTSIDE CHANNEL (100 FT. WIDE) TAKEN BY FATHOMETER. THE INSIDE CHANNEL (60 FT. WIDE) TAKEN BY LEADLINE, AND ARE SHOWN TO THE NEAREST FOOT AND TENTHS OF A FOOT. SOUNDINGS ARE BASED ON THE DATUM OF MEAN LOWER LOW WATER AT THE LOCALITY, NAVD 88.

THE PROJECT DEPTH IS 10 FEET.

VERTICAL CONTROL: TIDAL BM: 941 9426B JETTY

HORIZONTAL CONTROL: COAST GUARD D-BEACON

TIDE GAUGE LOCATION: WHARF NEAR HIGHWAY 1 BRIDGE

DGPS LOCATION: CAPE MENDOCINO



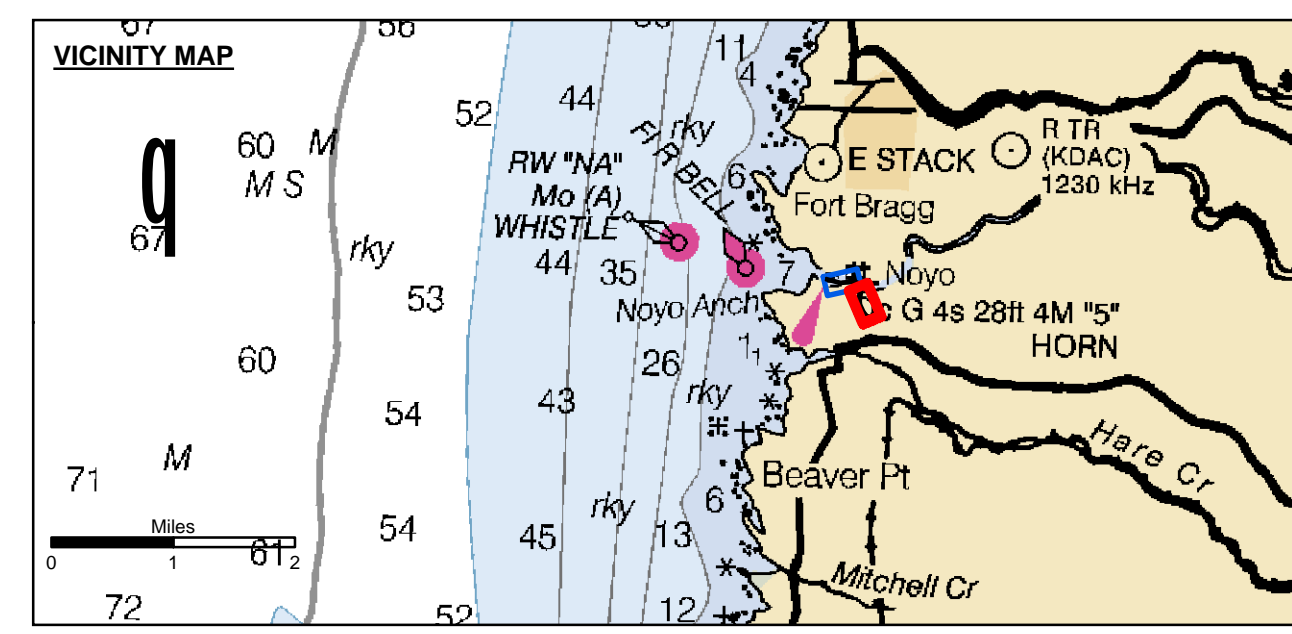
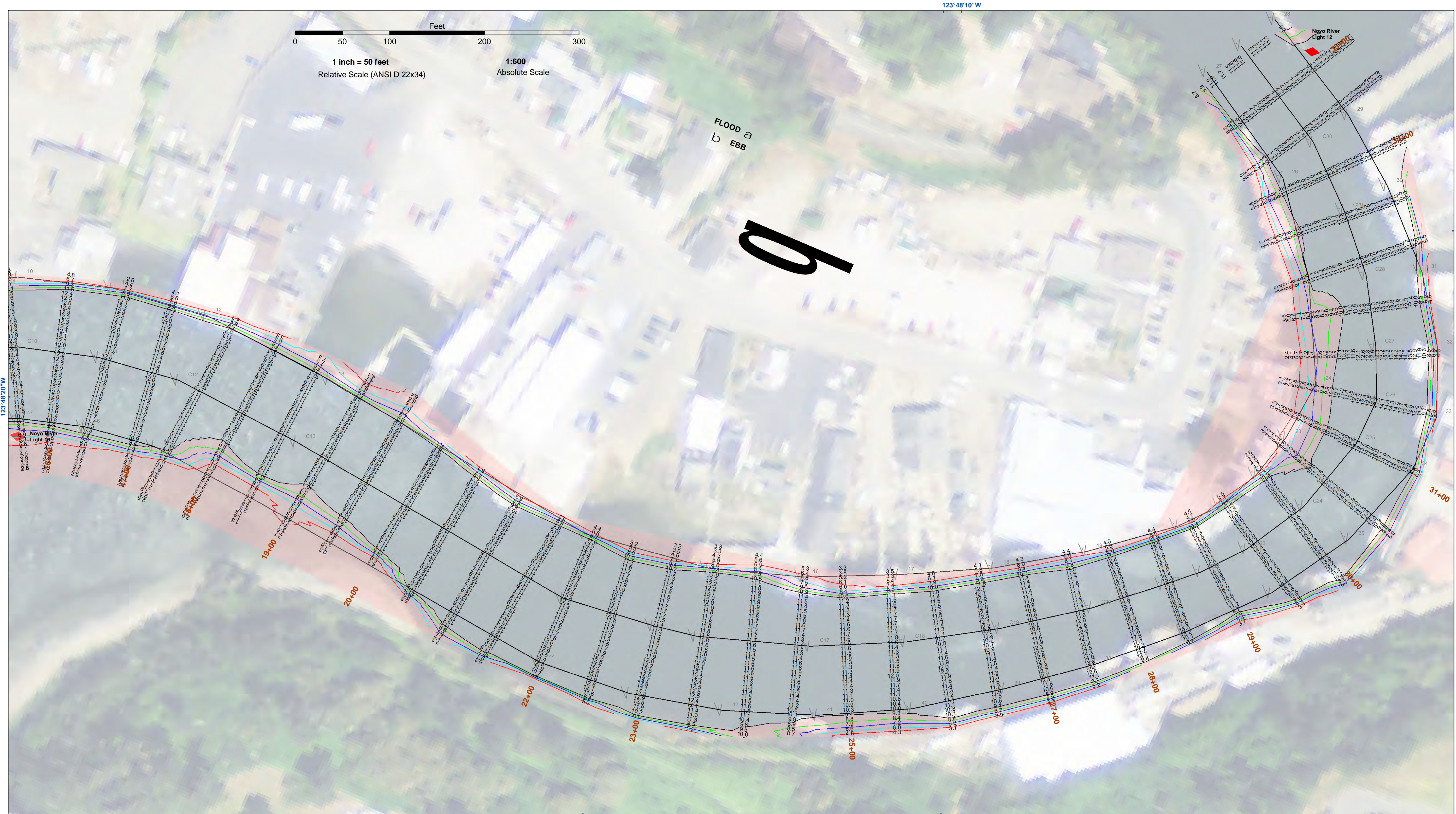
**DISCLAIMER** The United States Government furnishes this information for the purpose of providing accurate and reliable data for the use of the user. The user is responsible for the results of any application of the data for other than its intended purpose. The United States Government makes no warranty, expressed or implied, concerning the accuracy, completeness, or reliability of the information furnished. The user shall assume the responsibility for any liability whatsoever to any person by reason of any use made thereof. These data belong to the Government. Therefore, the recipient may not transfer these data to others without also transferring this disclaimer.

Chart Date:	Nov 14, 2016
Designed by:	PDT
Plotted by:	PDT
Checked by:	PDT
Drawn by:	PDT

CALIFORNIA  
**NOYO RIVER**  
 POST-DREDGE SURVEY  
 31 OCTOBER & 01 NOVEMBER 2016

Sheet  
 Reference  
 Number  
**1 of 2**





Federal Navigation Channel	Beacon, General	<b>Contours</b>
Shoaling Area	Obstruction Point	-10
Placement Area	Navigation Buoy	-9
Anchorage Area	Navigation Buoy	-8
Wreck Area	Shoalest Sounding*	-7
Submerged Wreck		-6
Angle Point		

NOTES:

HORIZONTAL COORDINATE SYSTEM: NORTH AMERICAN DATUM OF 1983 (NAD83), PROJECTED TO THE STATE PLANE COORDINATE SYSTEM (SPCS), CALIFORNIA ZONE II. DISTANCE UNITS IN U.S. SURVEY FEET.

VERTICAL DATUM: SOUNDINGS ARE SHOWN IN FEET AND INDICATE DEPTHS BELOW MEAN LOWER LOW WATER.

THE INFORMATION DEPICTED ON THIS MAP REPRESENTS THE RESULTS OF A SURVEY CONDUCTED ON THE DATE INDICATED AND CAN ONLY BE CONSIDERED TO REPRESENT THE GENERAL CONDITION EXISTING AT THAT TIME.

PLANE GRID, BEARING AND COORDINATES ARE BASED ON THE STATE OF CALIFORNIA COORDINATE SYSTEM, LAMBERT CONFORMAL PROJECTION, ZONE II NAD 83. CALIFORNIA, AS DESCRIBED IN SPECIAL PUBLICATION NO. 235, PUBLISHED BY NATIONAL OCEAN SURVEY.

BASE MAPS ARE USDA NAIP 2010.

\*SHOALEST SOUNDING PER QUARTER PER REACH

DRAWING NOT TO BE USED FOR NAVIGATION. ONLY CHANNEL CONDITION AT DATE OF SURVEY. THE LOCATION OF ALL NAVIGATION AIDS ARE BASED ON INFORMATION PROVIDED BY THE U.S. COAST GUARD. BUOY LOCATIONS REPRESENT THE POSITION OF THE SINKER ONLY.

SURVEYED BY GBA, 10/31/2016 AND 11/1/2016

SOUNDINGS FOR THE OUTSIDE CHANNEL (100 FT. WIDE) TAKEN BY FATHOMETER. THE INSIDE CHANNEL (60 FT. WIDE) SOUNDINGS ARE BASED ON THE DATUM OF MEAN LOWER LOW WATER AT THE LOCALITY, NAVD 88.

THE PROJECT DEPTH IS 10 FEET.

VERTICAL CONTROL: TIDAL BM: 941 9426B JETTY

HORIZONTAL CONTROL: COAST GUARD D-BEACON

TIDE GAUGE LOCATION: WHARF NEAR HIGHWAY 1 BRIDGE

DGPS LOCATION: CAPE MENDOCINO

**US Army Corps of Engineers**  
 San Francisco District  
 1455 Market Street  
 San Francisco, CA 94103

**DISCLAIMER**  
 The United States Government furnishes this information as a service to the public and does not warrant, express or implied, the accuracy, completeness, or reliability of the information. The user is responsible for the results of any application of the data for other than its intended purpose. The United States Government makes no representation, warranty, or liability whatsoever to any person by reason of any use made hereof. These data belong to the Government. Therefore the recipient may not transfer, disseminate, or otherwise use these data to others without also transferring this disclaimer.

Chart Date:	Nov 14, 2016
Designed by:	PDT
Plotted By:	PDT
Checked By:	PDT
Drawn by:	PDT

PREPARED UNDER THE DIRECTION OF  
**JOHN K. BAKER**  
 LT COLONEL, C.E. DISTRICT ENGINEER

Submitted:  
 Hydro Survey Team Leader

Recommended:  
 Chief, Hydro Survey Section

Approved:  
 Chief, Construction Branch

MENDOCINO COUNTY  
 CALIFORNIA  
**NOYO RIVER**  
 POST-DREDGE SURVEY  
 31 OCTOBER & 01 NOVEMBER 2016

**Sheet**  
**Number**  
**2 of 2**