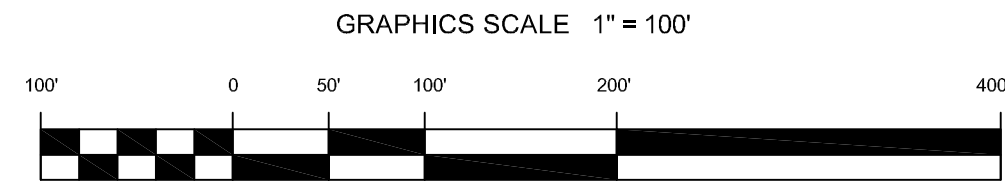
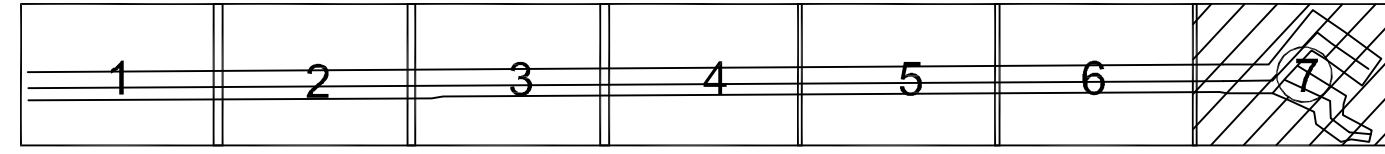



PRELIMINARY ISSUE  
THIS PLAN ISSUED FOR  
ADVANCE INFORMATION ONLY

SHEET INDEX



  
US Army Corps  
of Engineers  
San Francisco District  
1455 Market Street  
San Francisco, CA 94103

Mark	Description	Date	Appr.

SUBMITTED: PDD Hydro Survey Team Leader APPROVAL RECOMMENDED:	DESIGNED BY: PDD DATE: 3/21/2011	CHECKED BY: PDD SHEET NO. 7 OF 7	DRAWN BY: PDD DRAWING NO. 122 DATE: 7 07 122 2 XXX
APPROVED:	PREPARED UNDER THE DIRECTION OF TORREY A. DICIRO LT. COLONEL, C.E., DISTRICT ENGINEER		
Chief, Construction Branch	Chief, Technical Support Section		

CALIFORNIA  
ALAMEDA COUNTY  
**JACK D. MALTESTER CHANNEL**  
SAN LEANDRO MARINA  
CONDITION SURVEY  
15-16 MARCH 2011

Sheet reference number  
**C7**