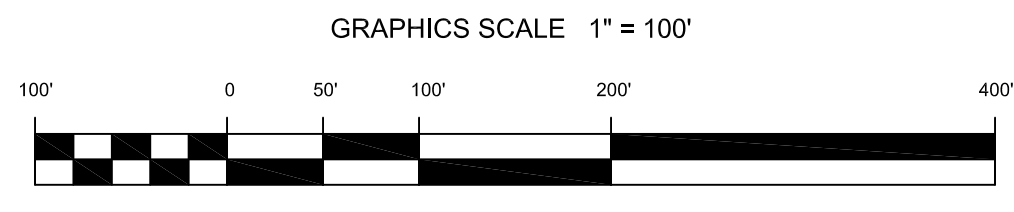
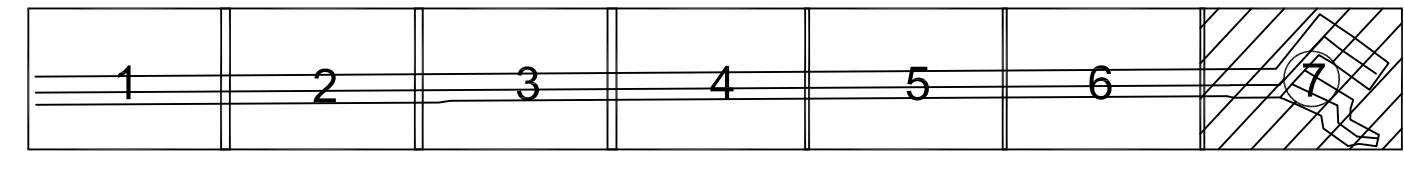


PRELIMINARY ISSUE
THIS PLAN ISSUED FOR
ADVANCE INFORMATION ONLY

SHEET INDEX



US Army Corps of Engineers
San Francisco District
1455 Market Street
San Francisco, CA 94103

Mark	Description	Date	Appr.

SUBMITTED:	PDT	DESIGNED BY:	PDT	DRAWN BY:	PDT
	Hydro Survey Team Leader	DATE:	SHEET NO.	DRAWING NO.	
APPROVAL RECOMMENDED:		5/8/2012	1 OF 7	122	2
APPROVED:	Chief, Geomatics Section	PREPARED UNDER THE DIRECTION OF TORREY A. DICIRO LT. COLONEL, C.E., DISTRICT ENGINEER			
	Chief, Construction Branch				

ALAMEDA COUNTY CALIFORNIA
JACK D. MALTESTER CHANNEL
SAN LEANDRO MARINA
CONDITION SURVEY
30 APRIL & 01-02 MAY 2012

Sheet reference number
C7