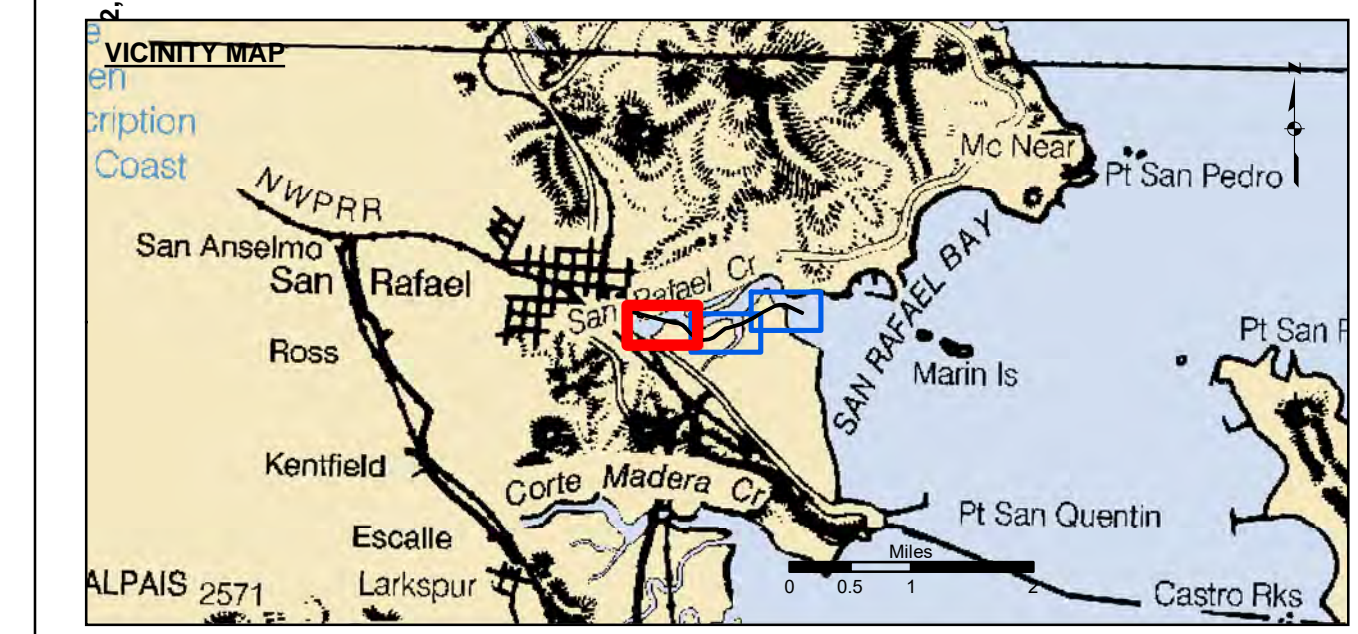


PRELIMINARY ISSUE
THIS PLAN ISSUED FOR
ADVANCE INFORMATION ONLY

NAD 83 CENTERLINE ANGLE POINTS		
Δ PT	X	Y
C1	5987089.37	2181692.15
C2	5986334.07	2182035.55
C3	5986088.27	2182054.45
C4	5985885.57	2181993.85
C5	5985380.77	2181729.75
C6	5984935.97	2181458.25
C7	5984421.07	2181213.45
C8	5983862.47	2181058.95
C9	5983735.07	2181010.85
C10	5983242.97	2180634.65
C11	5983023.37	2180542.35
C12	5982759.17	2180513.25
C13	5982475.57	2180605.75
C14	5982265.37	2180760.35
C15	5981973.07	2181089.55
C16	5981896.67	2181147.35
C17	5981723.17	2181235.75
C18	5981476.77	2181276.25
C19	5980172.77	2181612.05
C20	5979679.07	2181750.05

NAD 83 CHANNEL ANGLE POINTS		
Δ PT	X	Y
1	5987101.87	2181719.45
2	5986637.57	2181930.55
3	5986341.67	2182065.05
4	5986084.97	2182084.85
5	5985874.27	2182021.75
6	5985365.97	2181755.85
7	5984921.77	2181484.65
8	5984410.57	2181241.65
9	5983853.17	2181087.55
10	5983720.27	2181037.35
11	5983227.77	2180660.75
12	5983015.77	2180571.65
13	5982762.27	2180543.75
14	5982489.47	2180632.75
15	5982285.67	2180782.65
16	5981993.57	2181111.65
17	5981912.57	2181172.85
18	5981732.57	2181264.65
19	5981482.97	2181305.55
20	5980180.57	2181641.55
21	5979689.27	2181778.35
22	5979668.87	2181721.75

NAD 83 CHANNEL ANGLE POINTS		
Δ PT	X	Y
23	5979972.37	2181637.25
24	5979945.57	2181540.95
25	5980138.27	2181487.25
26	5980165.07	2181583.65
27	5981470.57	2181246.85
28	5981713.67	2181206.95
29	5981880.67	2181121.75
30	5981952.57	2181067.35
31	5982244.97	2180738.05
32	5982461.67	2180578.65
33	5982755.97	2180482.65
34	5983030.97	2180512.95
35	5983258.17	2180608.45
36	5983749.77	2180984.35
37	5983871.87	2181030.45
38	5984431.57	2181185.15
39	5984950.27	2181431.85
40	5985395.57	2181703.65
41	5985896.97	2181965.95
42	5986091.47	2182024.15
43	5986326.57	2182006.05
44	5987076.97	2181664.85



Federal Navigation Channel	Beacon, General	Contours
Shoaling Area	Obstruction Point	
Placement Area	Navigation Buoy	-6
Anchorage Area	Navigation Buoy	-5
Wreck Area	Shoalest Sounding*	-4
Submerged Wreck		-3
Angle Point		-2

NOTES:

DRAWING NOT TO BE USED FOR NAVIGATION. ONLY CHANNEL CONDITION AT DATE OF SURVEY. THE LOCATION OF ALL NAVIGATION AIDS ARE BASED ON INFORMATION PROVIDED BY THE U.S. COAST GUARD. BUOY LOCATIONS REPRESENT THE POSITION OF THE SINKER ONLY.

SOUNDINGS ABOVE DATUM ARE PREFIXED WITH A (+) SIGN.

REACH DREDGED:
 Reach 0, 1A, 1B & 1C (Sta. 500+00 to 450+00) - 7 October 2022
 Reach 1D (Sta. 450+00 to 57+00) - 17 October 2022
 Reach 2A & 2B (Sta. 57+00 to 87+00) - 26 October 2022
 Reach 2C & 2D (Sta. 87+00 to 118+84) - 16 & 22 November 2022
 Reach 3 (Sta. 118+84 to 168+00) - 3 December 2022
 Reach 4 (Sta. 168+00 to 200+73) - 7 February 2023

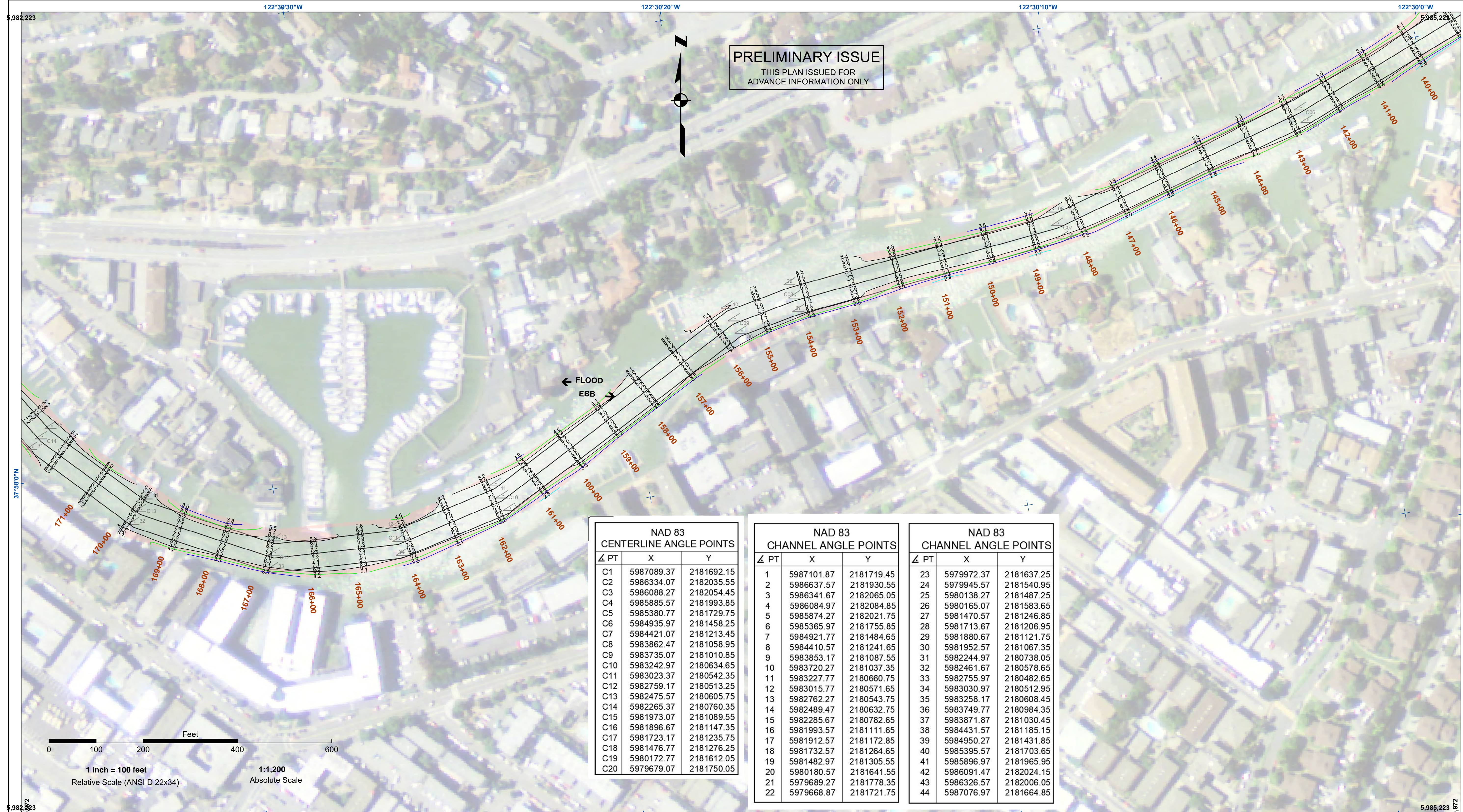
US Army Corps of Engineers
San Francisco District
450 Market Street
San Francisco, CA 94102

DISCLAIMER: The United States Government furnishes no warranty, expressed or implied, concerning the accuracy, completeness, or reliability of any data furnished. The project shall be under no liability whatsoever to any person by reason of any use made thereof. These data belong to the Government. Therefore, the recipient may not transfer these data to others without also transferring this Disclaimer.

Chart Date:	Aug 25, 2023
Designed by:	
Drawn by:	PDT
Surveyed By:	
Plotted By:	
Checked By:	PDT

CALIFORNIA
MARIN COUNTY
SAN RAFAEL CREEK
CONDITION SURVEY
17 AUGUST 2023

Sheet Reference Number
1 of 3

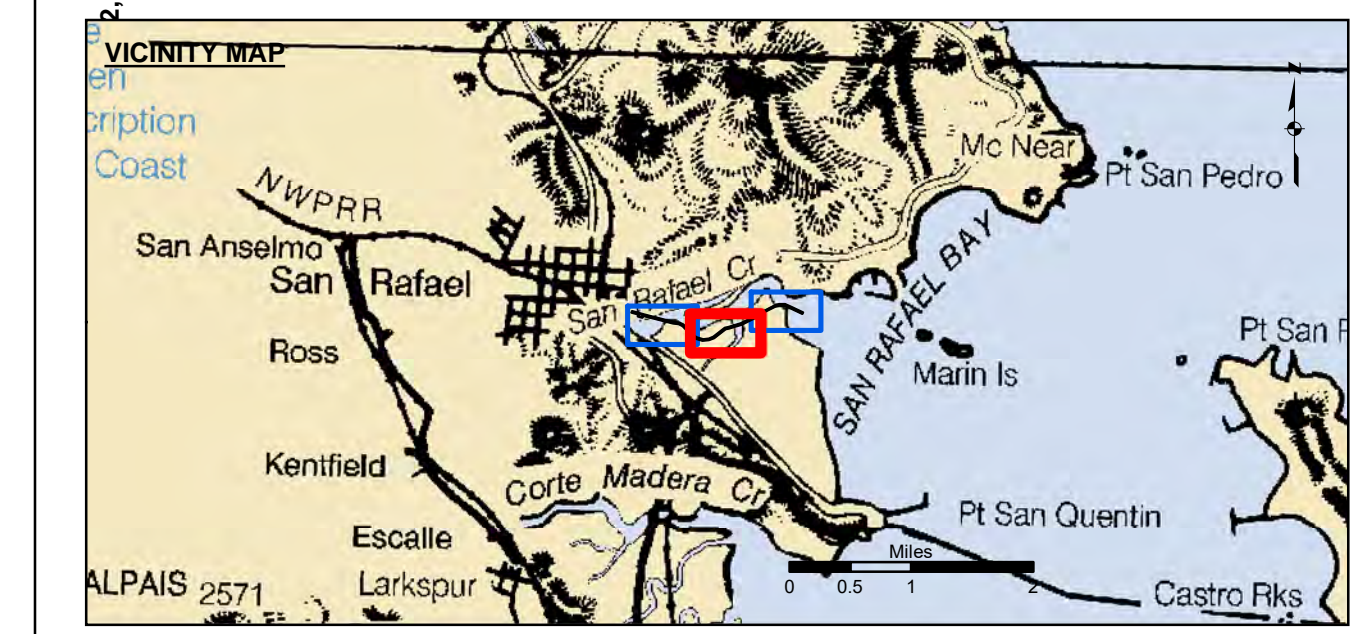
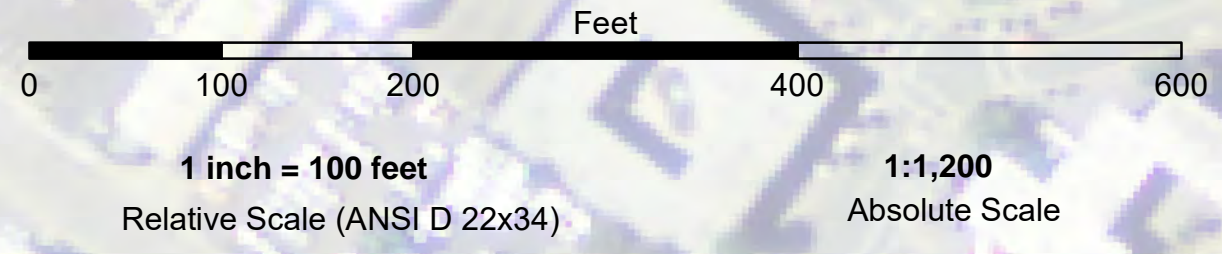


PRELIMINARY ISSUE
THIS PLAN ISSUED FOR
ADVANCE INFORMATION ONLY

NAD 83 CENTERLINE ANGLE POINTS		
Δ PT	X	Y
C1	5987089.37	2181692.15
C2	5986334.07	2182035.55
C3	5986088.27	2182054.45
C4	5985885.57	2181993.85
C5	5985380.77	2181729.75
C6	5984935.97	2181458.25
C7	5984421.07	2181213.45
C8	5983862.47	2181058.95
C9	5983735.07	2181010.85
C10	5983242.97	2180634.65
C11	5983023.37	2180542.35
C12	5982759.17	2180513.25
C13	5982475.57	2180605.75
C14	5982265.37	2180760.35
C15	5981973.07	2181089.55
C16	5981896.67	2181147.35
C17	5981723.17	2181235.75
C18	5981476.77	2181276.25
C19	5980172.77	2181612.05
C20	5979679.07	2181750.05

NAD 83 CHANNEL ANGLE POINTS		
Δ PT	X	Y
1	5987101.87	2181719.45
2	5986637.57	2181930.55
3	5986341.67	2182065.05
4	5986084.97	2182084.85
5	5985874.27	2182021.75
6	5985365.97	2181755.85
7	5984921.77	2181484.65
8	5984410.57	2181241.65
9	5983853.17	2181087.55
10	5983720.27	2181037.35
11	5983227.77	2180660.75
12	5983015.77	2180571.65
13	5982762.27	2180543.75
14	5982489.47	2180632.75
15	5982285.67	2180782.65
16	5981993.57	2181111.65
17	5981912.57	2181172.85
18	5981732.57	2181264.65
19	5981482.97	2181305.55
20	5980180.57	2181641.55
21	5979689.27	2181778.35
22	5979668.87	2181721.75

NAD 83 CHANNEL ANGLE POINTS		
Δ PT	X	Y
23	5979972.37	2181637.25
24	5979945.57	2181540.95
25	5980138.27	2181487.25
26	5980165.07	2181583.65
27	5981470.57	2181246.85
28	5981713.67	2181206.95
29	5981880.67	2181121.75
30	5981952.57	2181067.35
31	5982244.97	2180738.05
32	5982461.67	2180578.65
33	5982755.97	2180482.65
34	5983030.97	2180512.95
35	5983258.17	2180608.45
36	5983749.77	2180984.35
37	5983871.87	2181030.45
38	5984431.57	2181185.15
39	5984950.27	2181431.85
40	5985395.57	2181703.65
41	5985896.97	2181965.95
42	5986091.47	2182024.15
43	5986326.57	2182006.05
44	5987076.97	2181664.85



Federal Navigation Channel	Beacon, General	Contours
Shoaling Area	Obstruction Point	
Placement Area	Navigation Buoy	-6
Anchorage Area	Navigation Buoy	-5
Wreck Area	Shoalest Sounding*	-4
Submerged Wreck		-3
Angle Point		-2

NOTES:

DRAWING NOT TO BE USED FOR NAVIGATION. ONLY CHANNEL CONDITION AT DATE OF SURVEY. THE LOCATION OF ALL NAVIGATION AIDS ARE BASED ON INFORMATION PROVIDED BY THE U.S. COAST GUARD. BUOY LOCATIONS REPRESENT THE POSITION OF THE SINKER ONLY.

SOUNDINGS ABOVE DATUM ARE PREFIXED WITH A (+) SIGN.

REACH DREDGED:
 Reach 0, 1A, 1B & 1C (Sta. 500+00 to 45+00) - 7 October 2022
 Reach 1D (Sta. 45+00 to 57+00) - 17 October 2022
 Reach 2A & 2B (Sta. 57+00 to 87+00) - 26 October 2022
 Reach 2C & 2D (Sta. 87+00 to 118+84) - 16 & 22 November 2022
 Reach 3 (Sta. 118+84 to 168+00) - 3 December 2022
 Reach 4 (Sta. 168+00 to 200+73) - 7 February 2023

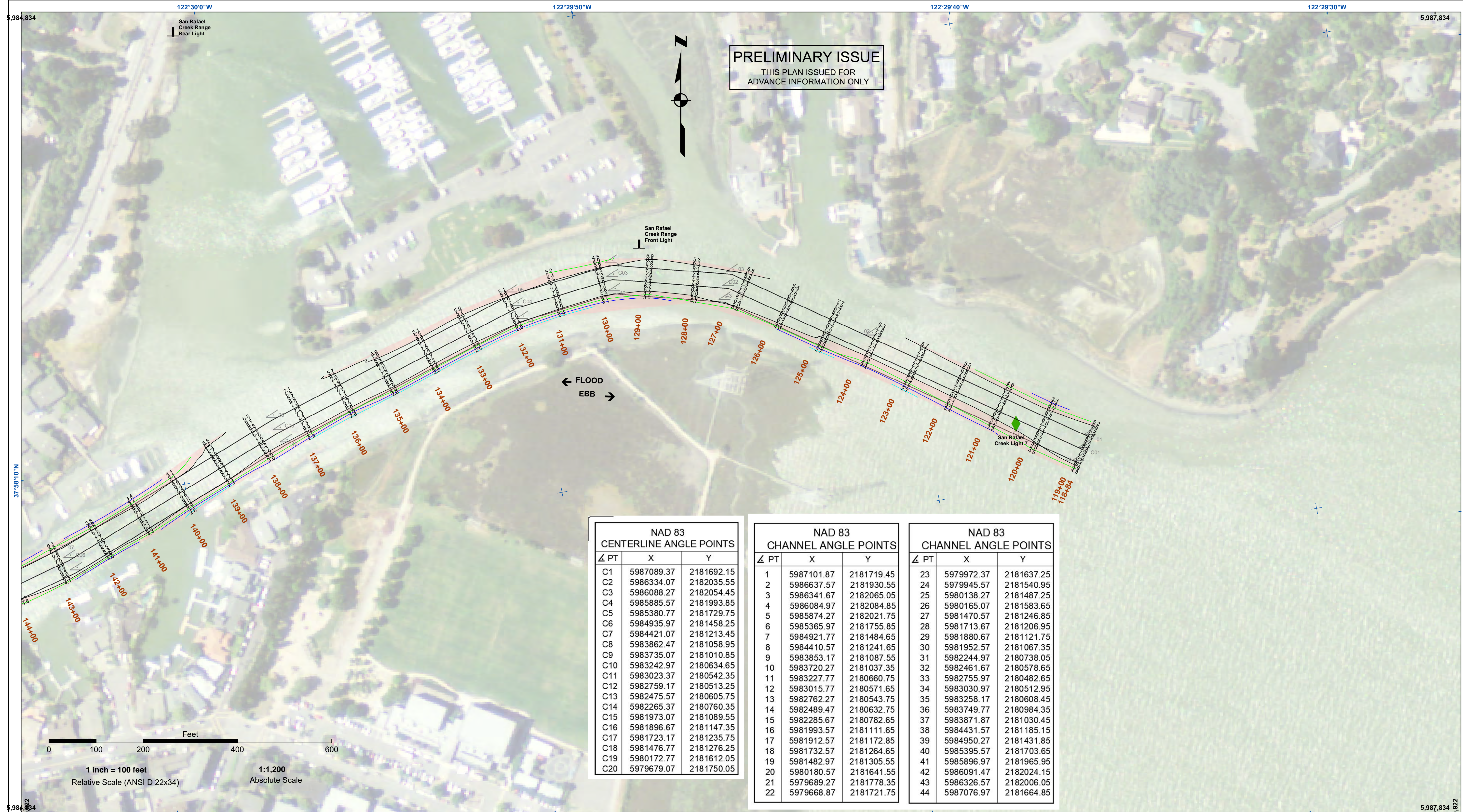
US Army Corps of Engineers
San Francisco District
450 Market Street
San Francisco, CA 94102

DISCLAIMER: The United States Government furnishes... The data represents the results of data... Engineers activity and indicates the general conditions... As such, it is only valid for its intended use, content, time and accuracy specifications. The user is responsible for the results of any of the application of the data for other than its intended purpose. These data belong to the Government. Therefore, the recipient may not transfer these data to others without also transferring this Disclaimer.

Prepared Under the Direction of	Chart Date:
LT COLONEL W. SHEBESTA	Aug 25, 2023
Subnet:	Designed by:
Hydro Survey Team Leader	
Recommended:	Checked by:
Chief, Hydro Survey Section	PDT
Approved:	Drawn by:
Chief, Construction Branch	PDT

CALIFORNIA
MARIN COUNTY
SAN RAFAEL CREEK
CONDITION SURVEY
17 AUGUST 2023

Sheet Reference Number
2 of 3

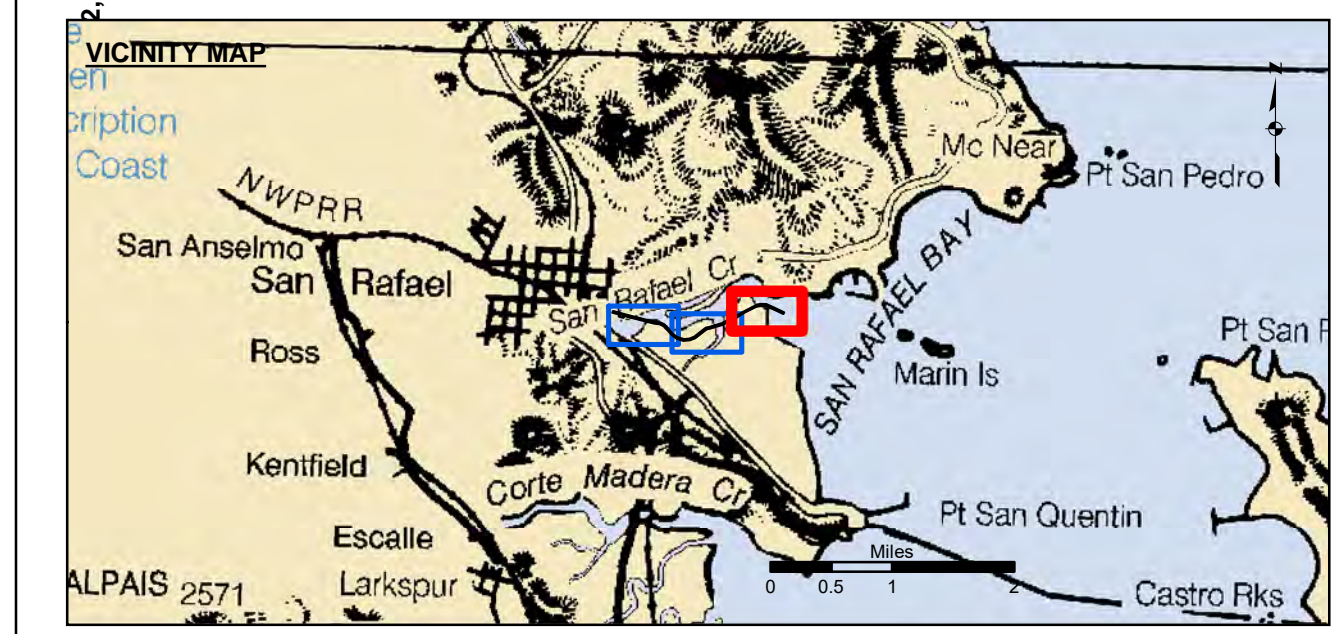


PRELIMINARY ISSUE
THIS PLAN ISSUED FOR
ADVANCE INFORMATION ONLY

NAD 83 CENTERLINE ANGLE POINTS		
△ PT	X	Y
C1	5987089.37	2181692.15
C2	5986334.07	2182035.55
C3	5986088.27	2182054.45
C4	5985885.57	2181993.85
C5	5985380.77	2181729.75
C6	5984935.97	2181458.25
C7	5984421.07	2181213.45
C8	5983862.47	2181058.95
C9	5983735.07	2181010.85
C10	5983242.97	2180634.65
C11	5983023.37	2180542.35
C12	5982759.17	2180513.25
C13	5982475.57	2180605.75
C14	5982265.37	2180760.35
C15	5981973.07	2181089.55
C16	5981896.67	2181147.35
C17	5981723.17	2181235.75
C18	5981476.77	2181276.25
C19	5980172.77	2181612.05
C20	5979679.07	2181750.05

NAD 83 CHANNEL ANGLE POINTS		
△ PT	X	Y
1	5987101.87	2181719.45
2	5986637.57	2181930.55
3	5986341.67	2182065.05
4	5986084.97	2182084.85
5	5985874.27	2182021.75
6	5985365.97	2181755.85
7	5984921.77	2181484.65
8	5984410.57	2181241.65
9	5983853.17	2181087.55
10	5983720.27	2181037.35
11	5983227.77	2180660.75
12	5983015.77	2180571.65
13	5982762.27	2180543.75
14	5982489.47	2180632.75
15	5982285.67	2180782.65
16	5981993.57	2181111.65
17	5981912.57	2181172.85
18	5981732.57	2181264.65
19	5981482.97	2181305.55
20	5980180.57	2181641.55
21	5979689.27	2181778.35
22	5979668.87	2181721.75

NAD 83 CHANNEL ANGLE POINTS		
△ PT	X	Y
23	5979972.37	2181637.25
24	5979945.57	2181540.95
25	5980138.27	2181487.25
26	5980165.07	2181583.65
27	5981470.57	2181246.85
28	5981713.67	2181206.95
29	5981880.67	2181121.75
30	5981952.57	2181067.35
31	5982244.97	2180738.05
32	5982461.67	2180578.65
33	5982755.97	2180482.65
34	5983030.97	2180512.95
35	5983258.17	2180608.45
36	5983749.77	2180984.35
37	5983871.87	2181030.45
38	5984431.57	2181185.15
39	5984950.27	2181431.85
40	5985395.57	2181703.65
41	5985896.97	2181965.95
42	5986091.47	2182024.15
43	5986326.57	2182006.05
44	5987076.97	2181664.85



Federal Navigation Channel	Beacon, General	Contours
Shoaling Area	Obstruction Point	
Placement Area	Navigation Buoy	-6
Anchorage Area	Navigation Buoy	-5
Wreck Area	Shoalest Sounding*	-4
Submerged Wreck		-3
Angle Point		-2

NOTES:

DRAWING NOT TO BE USED FOR NAVIGATION. ONLY CHANNEL CONDITION AT DATE OF SURVEY. THE LOCATION OF ALL NAVIGATION AIDS ARE BASED ON INFORMATION PROVIDED BY THE U.S. COAST GUARD. BUOY LOCATIONS REPRESENT THE POSITION OF THE SINKER ONLY.

SOUNDINGS ARE BASED ON THE DATUM OF MEAN LOWER LOW WATER AT THE LOCALITY.

PLANE GRID AND COORDINATES ARE BASED ON LAMBERT PROJECTION, ZONE III NAD 83, CALIFORNIA, AS DESCRIBED IN SPECIAL PUBLICATION NO. 235, PUBLISHED BY NATIONAL OCEAN SURVEY.

THE PROJECT DEPTH IS 8 FT IN 100 FT WIDE CHANNEL (Sta. 500+00 to 118+84). THENCE 6 FT IN 60 FT WIDE CHANNEL (Sta. 118+84 to 200+73).

SOUNDINGS ARE BASED ON TIDE GAGE LOCATED AT EASTERLY END OF TURNING BASIN, AND REFERENCED TO U.S.C. & G.S. TIDAL B.M. NO. 17, A STD. DISK SET IN N.W. CORNER OF PUMP HOUSE DECK AT S. END OF YACHT CLUB BASIN, ON N. SIDE OF U.S. HWY. 101, AND 0.5 MI. S.E. OF SAN RAFAEL ELEVATION 9.81 FT ABOVE M.L.L.W.

SOUNDINGS ABOVE DATUM ARE PREFIXED WITH A (+) SIGN.

Reach Dredged:
 Reach 0, 1A, 1B & 1C (Sta. 500+00 to 45+00) - 7 October 2022
 Reach 1D (Sta. 45+00 to 57+00) - 17 October 2022
 Reach 2A & 2B (Sta. 57+00 to 87+00) - 26 October 2022
 Reach 2C & 2D (Sta. 87+00 to 118+84) - 18 & 22 November 2022
 Reach 3 (Sta. 118+84 to 168+00) - 3 December 22
 Reach 4 (Sta. 168+00 to 200+73) - 7 February 2023

US Army Corps of Engineers
San Francisco District
450 Market Street
San Francisco, CA 94102

DISCLAIMER: The United States Government furnishes no warranty, expressed or implied, concerning the accuracy, completeness, or reliability of any data furnished. The United States Government makes no warranty, expressed or implied, concerning the accuracy, completeness, or reliability of any data furnished. The United States Government is not liable for any damage or loss, including consequential, incidental, or special damages, arising from the use of these data. These data are provided for informational purposes only and are not to be used for any other purpose. The recipient may not transfer these data to others without also transferring this Disclaimer.

Prepared Under the Direction of:	Chart Date:
TIMOTHY W. SHEBESTA	Aug 25, 2023
Subproject:	Designed by:
Hydro Survey Team Leader	
Recommended:	Checked by:
Chief, Hydro Survey Section	PDT
Approved:	Drawn by:
Chief, Construction Branch	PDT

CALIFORNIA
MARIN COUNTY
SAN RAFAEL CREEK
CONDITION SURVEY
17 AUGUST 2023

Sheet Reference Number
3 of 3