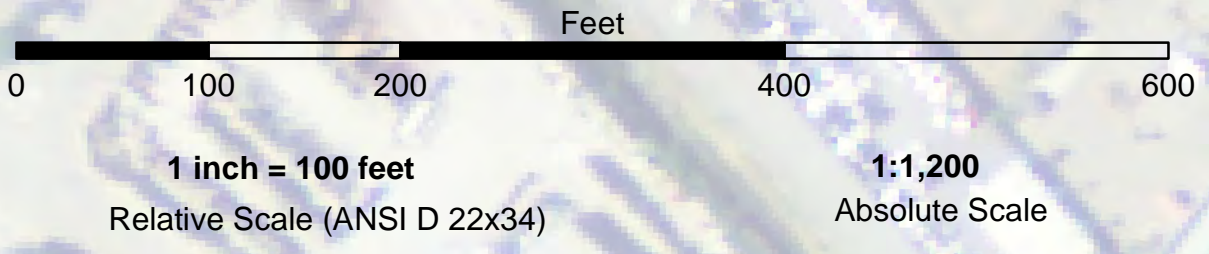


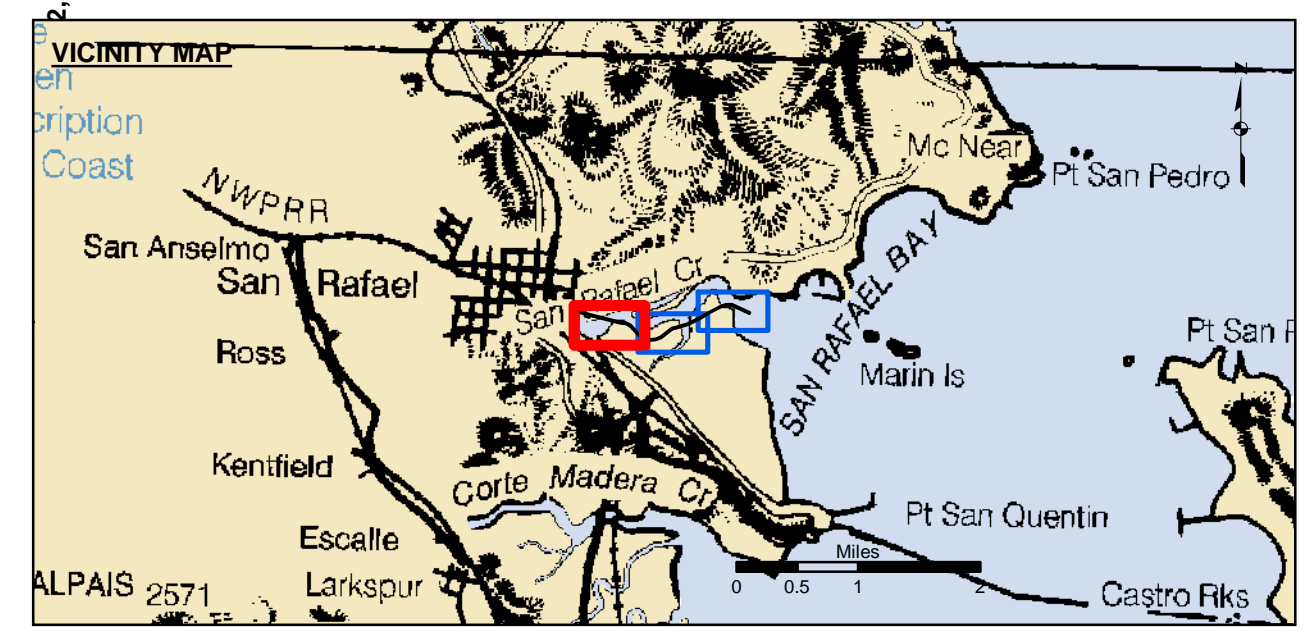
PRELIMINARY ISSUE
THIS PLAN ISSUED FOR
ADVANCE INFORMATION ONLY
NOT FOR NAVIGATION PURPOSES



NAD 1983 CENTERLINE ANGLE POINTS		
ANGLE PT	X	Y
C01	5987089.37	2181692.15
C02	5986334.07	2182035.55
C03	5986088.27	2182054.45
C04	5985885.57	2181993.85
C05	5985380.77	2181729.75
C06	5984935.97	2181458.25
C07	5984421.07	2181213.45
C08	5983862.47	2181058.95
C09	5983735.07	2181010.85
C10	5983242.97	2180634.65
C11	5983023.37	2180542.35
C12	5982759.17	2180513.25
C13	5982475.57	2180605.75
C14	5982265.37	2180760.35
C15	5981973.07	2181089.55
C16	5981896.67	2181147.35
C17	5981723.17	2181235.75
C18	5981476.77	2181276.25
C19	5980172.77	2181612.05
C20	5919679.07	2181750.05

NAD 1983 CHANNEL ANGLE POINTS		
ANGLE PT	X	Y
1	5987101.87	2181719.45
2	5986637.57	2181930.55
3	5986637.57	2182065.05
4	5986084.97	2182084.85
5	5985874.27	2182021.75
6	5985365.97	2181755.85
7	5984921.77	2181484.65
8	5984410.57	2181241.65
9	5983853.17	2181087.55
10	5983720.27	2181037.35
11	5983227.77	2180660.75
12	5983015.77	2180571.65
13	5982762.27	2180543.75
14	5982489.47	2180632.75
15	5982285.67	2180782.65
16	5981993.57	2181111.65
17	5981912.57	2181172.85
18	5981732.57	2181264.65
19	5981482.97	2181305.55
20	5980180.57	2181641.55
21	5979689.27	2181778.35
22	5979668.87	2181721.75

NAD 1983 CHANNEL ANGLE POINTS		
ANGLE PT	X	Y
23	5979972.37	2181637.25
24	5979945.57	2181540.95
25	5980138.27	2181487.25
26	5980165.07	2181583.65
27	5981470.57	2181246.85
28	5981713.67	2181206.95
29	5981880.67	2181121.75
30	5981952.57	2181067.35
31	5982244.97	2180738.05
32	5982461.67	2180578.65
33	5982755.97	2180482.65
34	5983030.97	2180512.95
35	5983258.17	2180608.45
36	5983749.77	2180984.35
37	5984431.57	2181185.15
38	5984431.57	2181185.15
39	5984950.27	2181431.85
40	5985395.57	2181703.65
41	5985896.97	2181965.95
42	5986091.47	2182024.15
43	5986326.57	2182006.05
44	5987076.97	2181664.85



Federal Navigation Channel	Beacon, General	Contours
Shoaling Area	Obstruction Point	-6
Placement Area	Navigation Buoy	-5
Anchorage Area	Navigation Buoy	-4
Wreck Area	Shoalest Sounding*	-3
Submerged Wreck		-2
Angle Point		

NOTES:
DRAWING NOT TO BE USED FOR NAVIGATION. ONLY CHANNEL CONDITION AT DATE OF SURVEY.
THE LOCATION OF ALL NAVIGATION AIDS ARE BASED ON INFORMATION PROVIDED BY THE U.S. COAST GUARD. BUOY LOCATIONS REPRESENT THE POSITION OF THE SINKER ONLY.

SURVEYED BY THE CORPS OF ENGINEERS.

SOUNDING FOR THE CHANNEL MEASURED WITH MULTIBEAM ECHOSOUNDER AND ARE SHOWN TO THE NEAREST TENTH FOOT.

SOUNDINGS ARE BASED ON THE DATUM OF MEAN LOWER LOW WATER AT THE LOCALITY.

PLANE GRID AND COORDINATES ARE BASED ON LAMBERT PROJECTION, ZONE III NAD 83, CALIFORNIA, AS DESCRIBED IN SPECIAL PUBLICATION NO. 236, PUBLISHED BY NATIONAL OCEAN SURVEY.

THE PROJECT DEPTH IS 6 FEET.

HORIZONTAL CONTROL: DESIGNATION, SOURCE, XYZ COAST GUARD D-BEACON

VERTICAL CONTROL: BENCHMARK, MLLW ELEV., AGENCY B.M. TIDAL 17 (1951), USCGS DISK, 9.73 MLLW HARBOR ST. PUMPHOUSE, EAST FRANCISCO BLVD. B.M. L 551 (1956), USCGS DISK, 15.61 MLLW SAN RAFAEL SANITARY DIST. PUMPHOUSE, PT. SAN PEDRO RD.

TIDE GAGE LOCATION: SAN RAFAEL YACHT HARBOR & MARIN YACHT HARBOR
STA. 119+00 TO 150+00 ... Marin Yacht Harbor
STA. 150+00 TO 200+00 ... San Rafael Yacht Harbor
FLOOD => SLACK => EBB TIDE SURVEY 5.2 FT. => 6.4 FT.



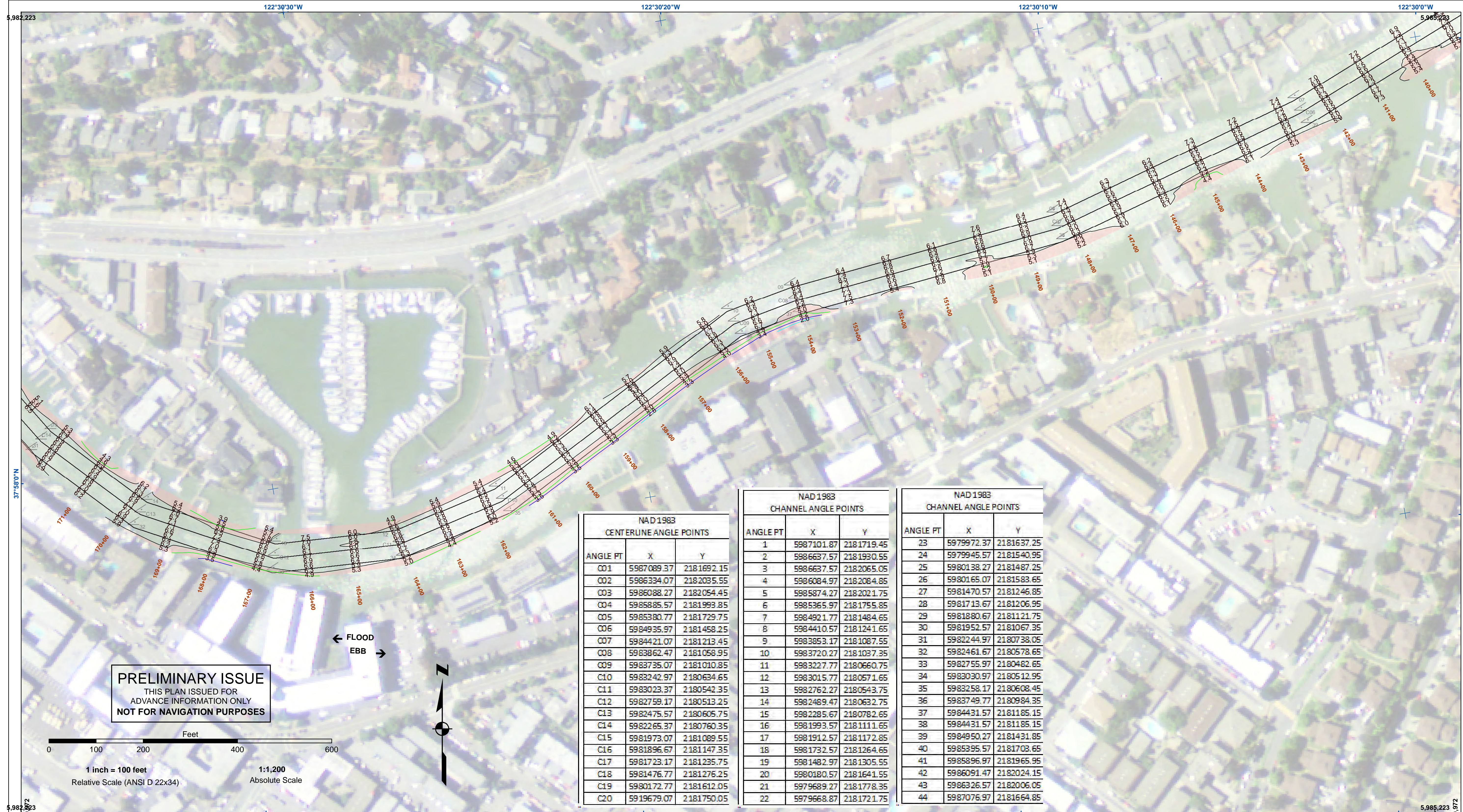
DISCLAIMER
Access Constraints: The United States Government furnishes this information as a service to the public. It is not intended for use in any other manner than for the intended purpose. The user is responsible for the results of any application of the data for other than the intended purpose. The recipient may not transfer these data to others without also transferring this Disclaimer.

Access Constraints: The United States Government furnishes this information as a service to the public. It is not intended for use in any other manner than for the intended purpose. The user is responsible for the results of any application of the data for other than the intended purpose. The recipient may not transfer these data to others without also transferring this Disclaimer.

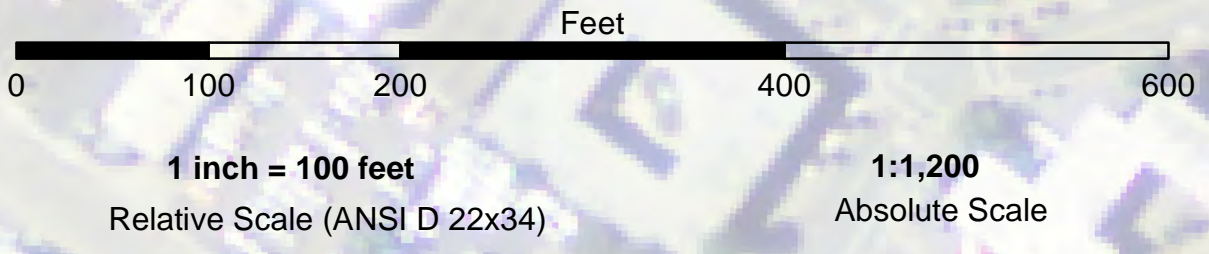
Chart Date:	Aug 23, 2024
Designed by:	
Drawn by:	PDT
Checked by:	PDT
Surveyed By:	
Plotted By:	
Reviewed By:	
Approved:	

CALIFORNIA
MARIN COUNTY
SAN RAFAEL CREEK
CONDITION SURVEY
15-16 AUGUST 2024

Sheet Reference Number
1 of 3



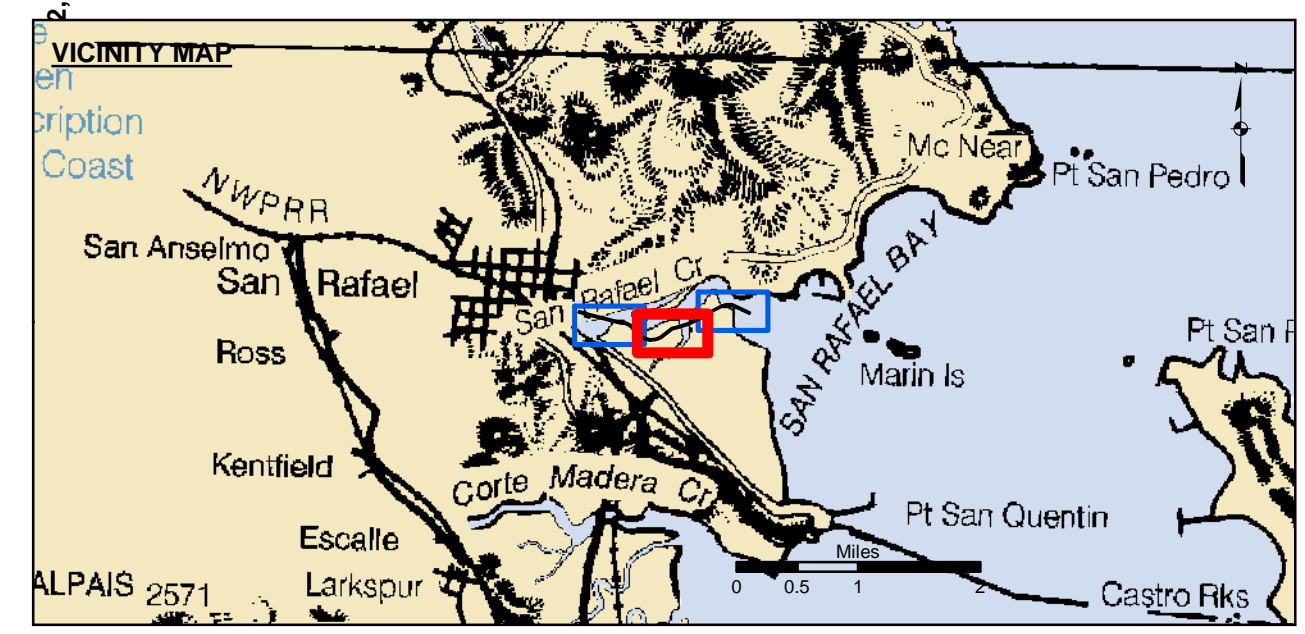
PRELIMINARY ISSUE
THIS PLAN ISSUED FOR
ADVANCE INFORMATION ONLY
NOT FOR NAVIGATION PURPOSES



NAD 1983 CENTERLINE ANGLE POINTS		
ANGLE PT	X	Y
C01	5987089.37	2181692.15
C02	5986334.07	2182035.55
C03	5986088.27	2182054.45
C04	5985885.57	2181993.85
C05	5985380.77	2181729.75
C06	5984935.97	2181458.25
C07	5984421.07	2181213.45
C08	5983862.47	2181058.95
C09	5983735.07	2181010.85
C10	5983242.97	2180634.65
C11	5983023.37	2180542.35
C12	5982759.17	2180513.25
C13	5982475.57	2180605.75
C14	5982265.37	2180760.35
C15	5981973.07	2181089.55
C16	5981896.67	2181147.35
C17	5981723.17	2181235.75
C18	5981476.77	2181276.25
C19	5980172.77	2181612.05
C20	5919679.07	2181750.05

NAD 1983 CHANNEL ANGLE POINTS		
ANGLE PT	X	Y
1	5987101.87	2181719.45
2	5986637.57	2181930.55
3	5986637.57	2182065.05
4	5986084.97	2182084.85
5	5985874.27	2182021.75
6	5985365.97	2181755.85
7	5984921.77	2181484.65
8	5984410.57	2181241.65
9	5983853.17	2181087.55
10	5983720.27	2181037.35
11	5983227.77	2180660.75
12	5983015.77	2180571.65
13	5982762.27	2180543.75
14	5982489.47	2180632.75
15	5982285.67	2180782.65
16	5981993.57	2181111.65
17	5981912.57	2181172.85
18	5981732.57	2181264.65
19	5981482.97	2181305.55
20	5980180.57	2181641.55
21	5979689.27	2181778.35
22	5979668.87	2181721.75

NAD 1983 CHANNEL ANGLE POINTS		
ANGLE PT	X	Y
23	5979972.37	2181637.25
24	5979945.57	2181540.95
25	5980138.27	2181487.25
26	5980165.07	2181583.65
27	5981470.57	2181246.85
28	5981713.67	2181206.95
29	5981880.67	2181121.75
30	5981952.57	2181067.35
31	5982244.97	2180738.05
32	5982461.67	2180578.65
33	5982755.97	2180482.65
34	5983030.97	2180512.95
35	5983258.17	2180608.45
36	5983749.77	2180984.35
37	5984431.57	2181185.15
38	5984431.57	2181185.15
39	5984950.27	2181431.85
40	5985395.57	2181703.65
41	5985896.97	2181965.95
42	5986091.47	2182024.15
43	5986326.57	2182006.05
44	5987076.97	2181664.85



Federal Navigation Channel	Beacon, General	Contours
Shoaling Area	Obstruction Point	-6
Placement Area	Navigation Buoy	-5
Anchorage Area	Navigation Buoy	-4
Wreck Area	Shoalest Sounding*	-3
Submerged Wreck		-2
Angle Point		

NOTES:
DRAWING NOT TO BE USED FOR NAVIGATION. ONLY CHANNEL CONDITION AT DATE OF SURVEY.
THE LOCATION OF ALL NAVIGATION AIDS ARE BASED ON INFORMATION PROVIDED BY THE U.S. COAST GUARD. BUOY LOCATIONS REPRESENT THE POSITION OF THE SINKER ONLY.

SURVEYED BY THE CORPS OF ENGINEERS.

SOUNDING FOR THE CHANNEL MEASURED WITH MULTIBEAM ECHOSOUNDER AND ARE SHOWN TO THE NEAREST TENTH FOOT.

SOUNDINGS ARE BASED ON THE DATUM OF MEAN LOWER LOW WATER AT THE LOCALITY.

PLANE GRID AND COORDINATES ARE BASED ON LAMBERT PROJECTION, ZONE III NAD 83, CALIFORNIA, AS DESCRIBED IN SPECIAL PUBLICATION NO. 236, PUBLISHED BY NATIONAL OCEAN SURVEY.

THE PROJECT DEPTH IS 6 FEET.

HORIZONTAL CONTROL: DESIGNATION, SOURCE, XYZ COAST GUARD D-BEACON

VERTICAL CONTROL: BENCHMARK, MLLW ELEV., AGENCY B.M. TIDAL 17 (1951), USCGS DISK, 9.73 MLLW HARBOR ST. PUMPHOUSE, EAST FRANCISCO BLVD. B.M. L 551 (1956), USCGS DISK, 15.61 MLLW SAN RAFAEL SANITARY DIST. PUMPHOUSE, PT. SAN PEDRO RD.

TIDE GAGE LOCATION: SAN RAFAEL YACHT HARBOR & MARIN YACHT HARBOR
STA. 119+00 TO 150+00 ... Marin Yacht Harbor
STA. 150+00 TO 200+00 ... San Rafael Yacht Harbor
FLOOD => SLACK => EBB TIDE SURVEY 5.2 FT. => 6.4 FT.

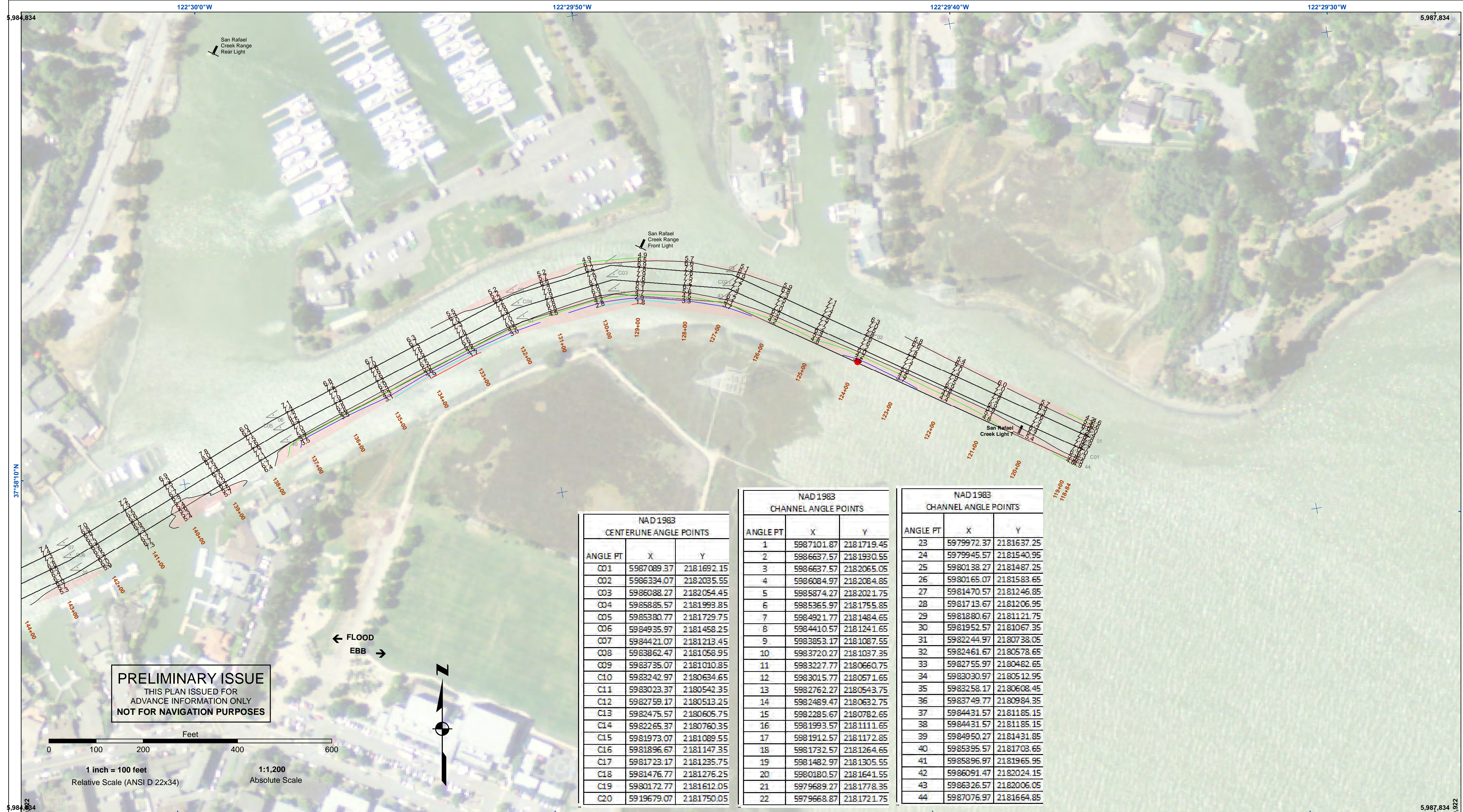


DISCLAIMER: The United States Government furnishes these data to you for your information only. The data are not to be used for any purpose other than that for which they were originally prepared. The user is responsible for the results of any application of the data for other than the intended purpose. The user is responsible for the results of any application of the data for other than the intended purpose. The user is responsible for the results of any application of the data for other than the intended purpose.

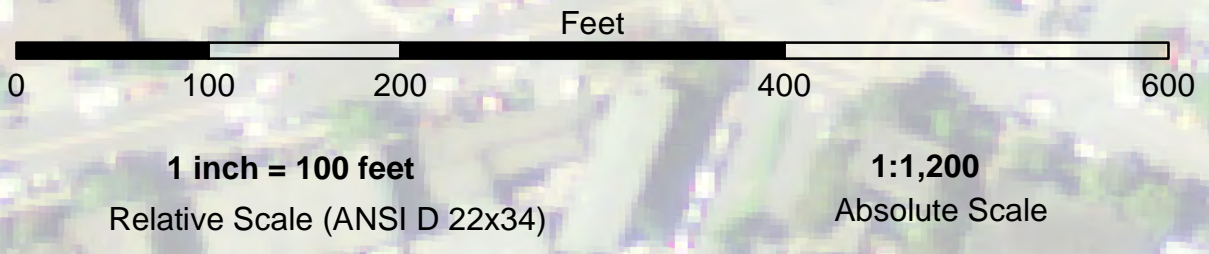
Chart Date:	Aug 23, 2024
Designed by:	
Drawn by:	PDT
Checked by:	PDT
Surveyed By:	
Plotted By:	
Checked By:	

CALIFORNIA
MARIN COUNTY
SAN RAFAEL CREEK
CONDITION SURVEY
15-16 AUGUST 2024

Sheet
Reference
Number
2 of 3



PRELIMINARY ISSUE
THIS PLAN ISSUED FOR
ADVANCE INFORMATION ONLY
NOT FOR NAVIGATION PURPOSES



NAD 1983 CENTERLINE ANGLE POINTS		
ANGLE PT	X	Y
C01	5987089.37	2181692.15
C02	5986334.07	2182035.55
C03	5986088.27	2182054.45
C04	5985885.57	2181993.85
C05	5985380.77	2181729.75
C06	5984935.97	2181458.25
C07	5984421.07	2181213.45
C08	5983862.47	2181058.95
C09	5983735.07	2181010.85
C10	5983242.97	2180634.65
C11	5983023.37	2180542.35
C12	5982759.17	2180513.25
C13	5982475.57	2180605.75
C14	5982265.37	2180760.35
C15	5981973.07	2181089.55
C16	5981896.67	2181147.35
C17	5981723.17	2181235.75
C18	5981476.77	2181276.25
C19	5980172.77	2181612.05
C20	5919679.07	2181750.05

NAD 1983 CHANNEL ANGLE POINTS		
ANGLE PT	X	Y
1	5987101.87	2181719.45
2	5986637.57	2181930.55
3	5986637.57	2182065.05
4	5986084.97	2182084.85
5	5985874.27	2182021.75
6	5985365.97	2181755.85
7	5984921.77	2181484.65
8	5984410.57	2181241.65
9	5983853.17	2181087.55
10	5983720.27	2181037.35
11	5983227.77	2180660.75
12	5983015.77	2180571.65
13	5982762.27	2180543.75
14	5982489.47	2180632.75
15	5982285.67	2180782.65
16	5981993.57	2181111.65
17	5981912.57	2181172.85
18	5981732.57	2181264.65
19	5981482.97	2181305.55
20	5980180.57	2181641.55
21	5979689.27	2181778.35
22	5979668.87	2181721.75

NAD 1983 CHANNEL ANGLE POINTS		
ANGLE PT	X	Y
23	5979972.37	2181637.25
24	5979945.57	2181540.95
25	5980138.27	2181487.25
26	5980165.07	2181583.65
27	5981470.57	2181246.85
28	5981713.67	2181206.95
29	5981880.67	2181121.75
30	5981952.57	2181067.35
31	5982244.97	2180738.05
32	5982461.67	2180578.65
33	5982755.97	2180482.65
34	5983030.97	2180512.95
35	5983258.17	2180608.45
36	5983749.77	2180984.35
37	5984431.57	2181185.15
38	5984431.57	2181185.15
39	5984950.27	2181431.85
40	5985395.57	2181703.65
41	5985896.97	2181965.95
42	5986091.47	2182024.15
43	5986326.57	2182006.05
44	5987076.97	2181664.85

Federal Navigation Channel	Beacon, General	Contours
Shoaling Area	Obstruction Point	-6
Placement Area	Navigation Buoy	-5
Anchorage Area	Navigation Buoy	-4
Wreck Area	Shoalest Sounding*	-3
Submerged Wreck		-2
Angle Point		

NOTES:
DRAWING NOT TO BE USED FOR NAVIGATION. ONLY CHANNEL CONDITION AT DATE OF SURVEY.
THE LOCATION OF ALL NAVIGATION AIDS ARE BASED ON INFORMATION PROVIDED BY THE U.S. COAST GUARD. BUOY LOCATIONS REPRESENT THE POSITION OF THE SINKER ONLY.

SURVEYED BY THE CORPS OF ENGINEERS.

SOUNDING FOR THE CHANNEL MEASURED WITH MULTIBEAM ECHOSOUNDER AND ARE SHOWN TO THE NEAREST TENTH FOOT.

SOUNDINGS ARE BASED ON THE DATUM OF MEAN LOWER LOW WATER AT THE LOCALITY.

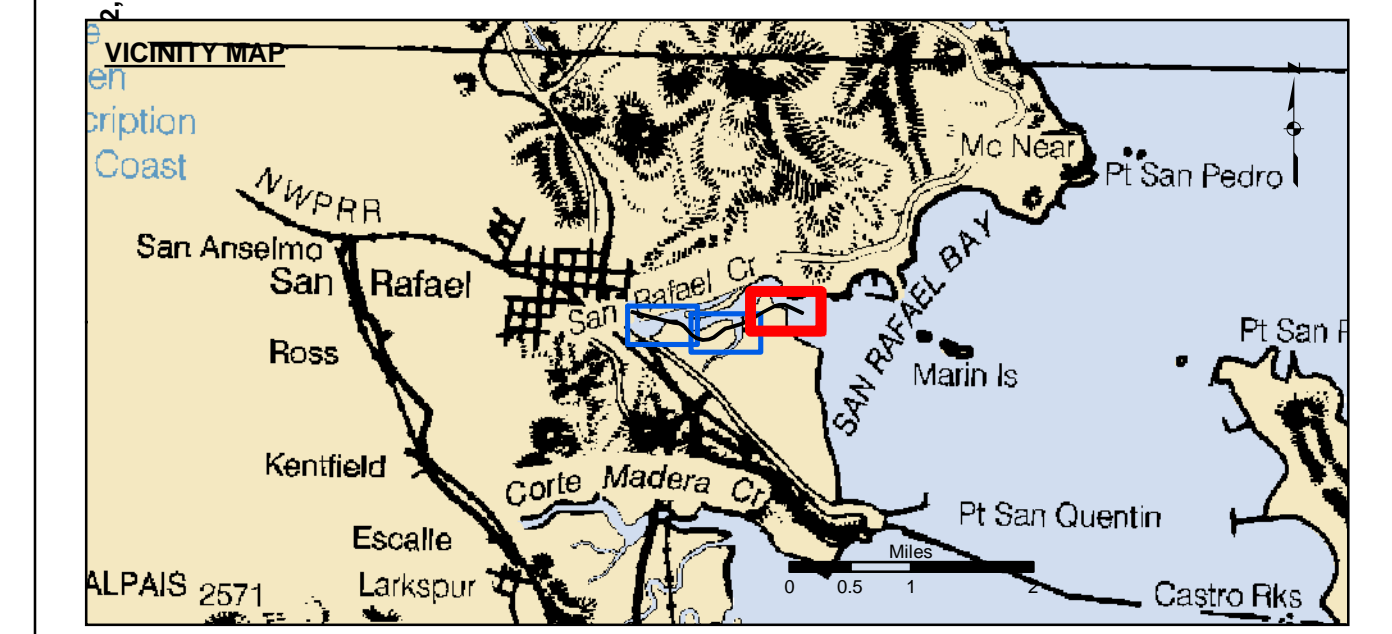
PLANE GRID AND COORDINATES ARE BASED ON LAMBERT PROJECTION, ZONE III NAD 83, CALIFORNIA, AS DESCRIBED IN SPECIAL PUBLICATION NO. 236, PUBLISHED BY NATIONAL OCEAN SURVEY.

THE PROJECT DEPTH IS 6 FEET.

HORIZONTAL CONTROL: DESIGNATION, SOURCE, XYZ COAST GUARD D-BEACON

VERTICAL CONTROL: BENCHMARK, MLLW ELEV., AGENCY B.M. TIDAL 17 (1951), USCGS DISK, 9.73 MLLW HARBOR ST. PUMPHOUSE, EAST FRANCISCO BLVD. B.M. L 551 (1956), USCGS DISK, 15.61 MLLW SAN RAFAEL SANITARY DIST. PUMPHOUSE, PT. SAN PEDRO RD.

TIDE GAGE LOCATION: SAN RAFAEL YACHT HARBOR & MARIN YACHT HARBOR
STA. 119+00 TO 150+00 ... Marin Yacht Harbor
STA. 150+00 TO 200+00 ... San Rafael Yacht Harbor
FLOOD => SLACK => EBB TIDE SURVEY 5.2 FT. => 6.4 FT.



US Army Corps of Engineers
San Francisco District
450 Golden Gate Avenue
San Francisco, CA 94102

DISCLAIMER
Access Constraints: The United States Government furnishes this information as a service to the public. It is not intended to be used for navigation or other purposes. The user is responsible for the results of any application of the data for other than its intended purpose. The user is responsible for the results of any application of the data for other than its intended purpose. The user is responsible for the results of any application of the data for other than its intended purpose.

Chart Date:	Aug 23, 2024
Designed by:	
Drawn by:	PDT
Checked by:	PDT
Surveyed By:	
Plotted By:	
Reviewed By:	
Approved By:	

CALIFORNIA
MARIN COUNTY
SAN RAFAEL CREEK
CONDITION SURVEY
15-16 AUGUST 2024

Sheet Reference Number
3 of 3