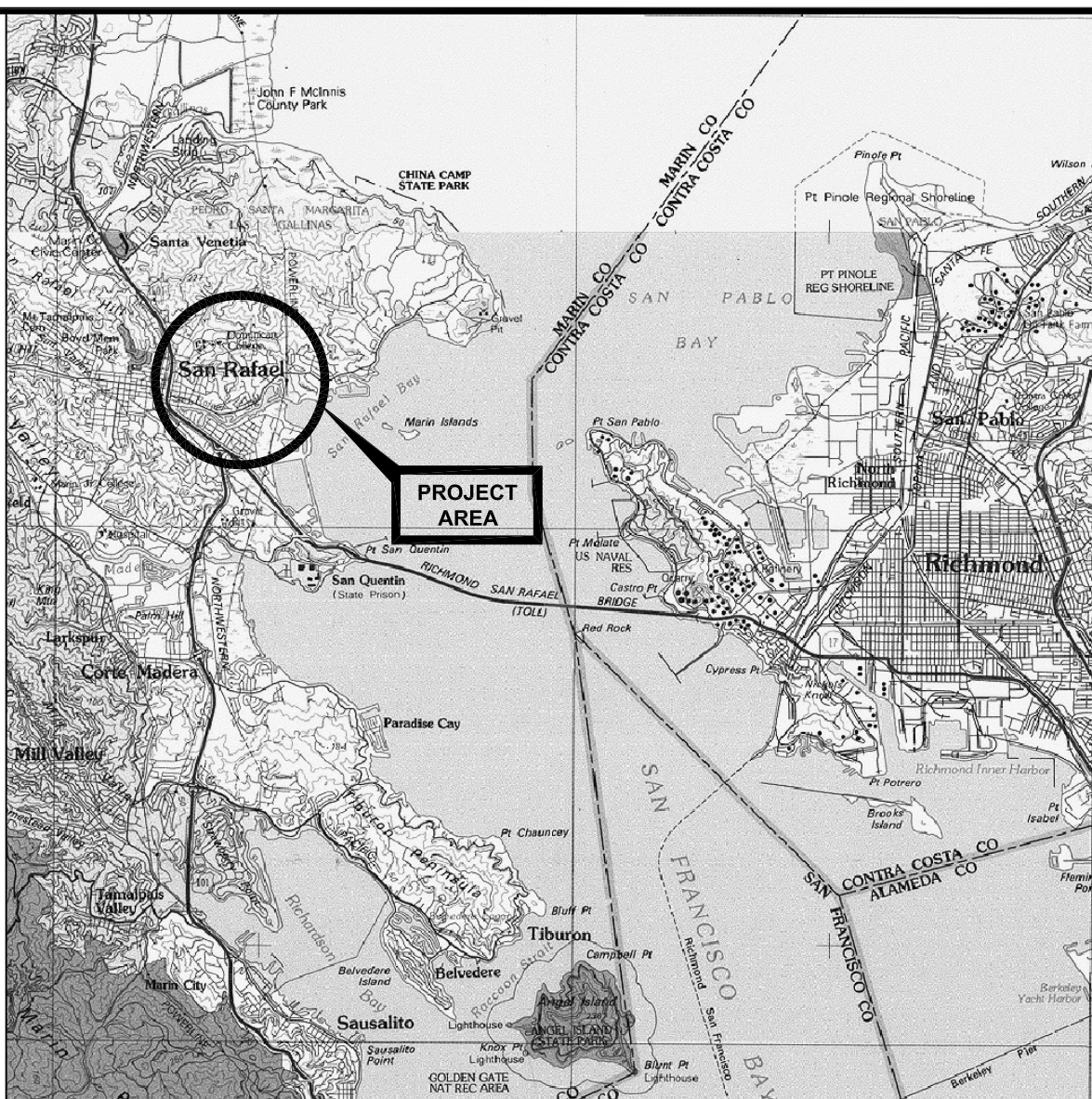
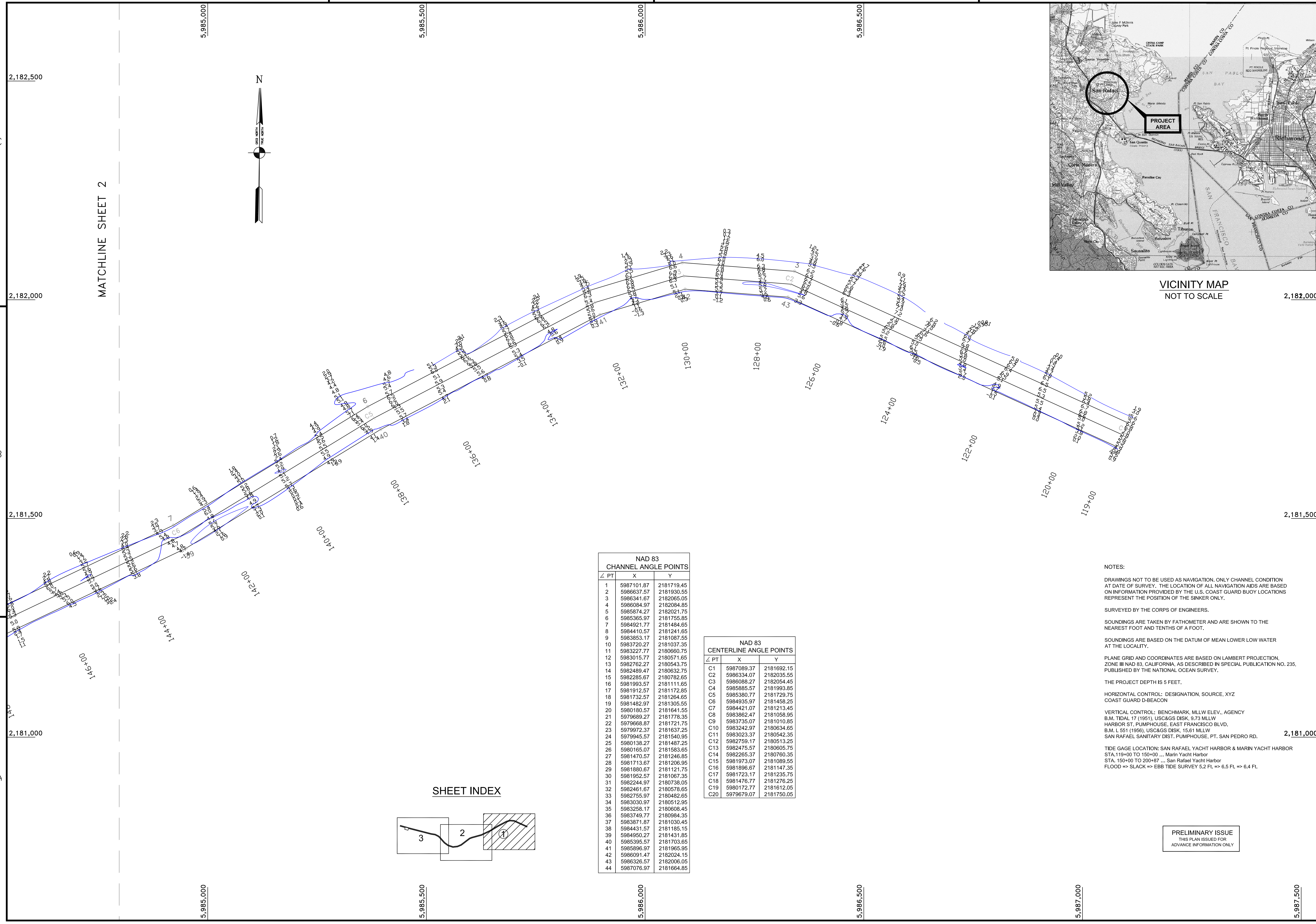


MATCHLINE SHEET 2



VICINITY MAP NOT TO SCALE

US Army Corps of Engineers
 San Francisco District
 1455 Market Street
 San Francisco, CA 94103

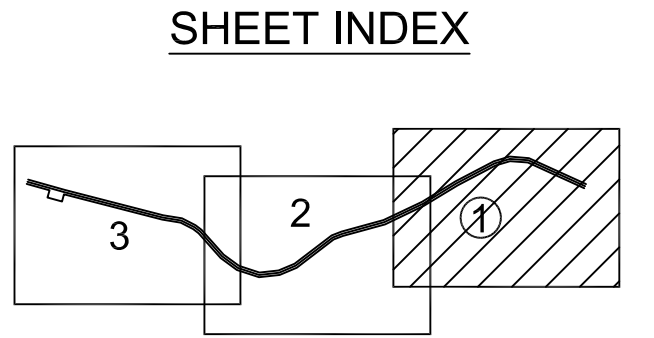
Mark	Description	Date	Appr.

NAD 83 CHANNEL ANGLE POINTS

∠ PT	X	Y
1	5987101.87	2181718.45
2	5986837.57	2181930.55
3	5986341.67	2182065.05
4	5986084.97	2182084.85
5	5985874.27	2182021.75
6	5985365.97	2181755.85
7	5984921.77	2181484.65
8	5984410.57	2181241.65
9	5983853.17	2181087.55
10	5983720.27	2181037.35
11	5983227.77	2180660.75
12	5983015.77	2180571.65
13	5982762.27	2180543.75
14	5982489.47	2180632.75
15	5982285.67	2180782.65
16	5981993.57	2181111.65
17	5981912.57	2181172.85
18	5981732.57	2181264.65
19	5981482.97	2181305.55
20	5980180.57	2181641.55
21	5979689.27	2181778.35
22	5979668.87	2181721.75
23	5979972.57	2181637.25
24	5979945.57	2181540.95
25	5980138.27	2181487.25
26	5980165.07	2181583.65
27	5981470.57	2181246.85
28	5981713.67	2181206.95
29	5981880.67	2181121.75
30	5981952.57	2181067.35
31	5982244.97	2180738.05
32	5982461.67	2180578.65
33	5982755.97	2180482.65
34	5983030.97	2180512.95
35	5983258.17	2180608.45
36	5983749.77	2180984.35
37	5983971.87	2181030.45
38	5984431.57	2181185.15
39	5984950.27	2181431.85
40	5985395.57	2181703.65
41	5985896.97	2181965.95
42	5986091.47	2182024.15
43	5986326.57	2182006.05
44	5987076.97	2181664.85

NAD 83 CENTERLINE ANGLE POINTS

∠ PT	X	Y
C1	5987089.37	2181692.15
C2	5986334.07	2182035.55
C3	5986088.27	2182054.45
C4	5985885.57	2181993.85
C5	5985380.77	2181729.75
C6	5984935.97	2181458.25
C7	5984421.07	2181213.45
C8	5983862.47	2181058.95
C9	5983735.07	2181010.85
C10	5983242.97	2180634.65
C11	5983023.37	2180542.35
C12	5982759.17	2180513.25
C13	5982475.57	2180605.75
C14	5982265.37	2180760.35
C15	5981973.07	2181089.55
C16	5981896.67	2181147.35
C17	5981723.17	2181235.75
C18	5981476.77	2181276.25
C19	5980172.77	2181612.05
C20	5979679.07	2181750.05



NOTES:
 DRAWINGS NOT TO BE USED AS NAVIGATION. ONLY CHANNEL CONDITION AT DATE OF SURVEY. THE LOCATION OF ALL NAVIGATION AIDS ARE BASED ON INFORMATION PROVIDED BY THE U.S. COAST GUARD BUOY LOCATIONS REPRESENT THE POSITION OF THE SINKER ONLY.
 SURVEYED BY THE CORPS OF ENGINEERS.
 SOUNDINGS ARE TAKEN BY FATHOMETER AND ARE SHOWN TO THE NEAREST FOOT AND TENTHS OF A FOOT.
 SOUNDINGS ARE BASED ON THE DATUM OF MEAN LOWER LOW WATER AT THE LOCALITY.
 PLANE GRID AND COORDINATES ARE BASED ON LAMBERT PROJECTION, ZONE III NAD 83, CALIFORNIA, AS DESCRIBED IN SPECIAL PUBLICATION NO. 235, PUBLISHED BY THE NATIONAL OCEAN SURVEY.
 THE PROJECT DEPTH IS 5 FEET.
 HORIZONTAL CONTROL: DESIGNATION, SOURCE, XYZ
 COAST GUARD D-BEACON
 VERTICAL CONTROL: BENCHMARK, MLLW ELEV., AGENCY
 B.M. TIDAL 17 (1951), USCGS DISK, 9.73 MLLW
 HARBOR ST, PUMPHOUSE, EAST FRANCISCO BLVD,
 B.M. L 551 (1956), USCGS DISK, 15.61 MLLW
 SAN RAFAEL SANITARY DIST. PUMPHOUSE, PT. SAN PEDRO RD.
 TIDE GAGE LOCATION: SAN RAFAEL YACHT HARBOR & MARIN YACHT HARBOR
 STA. 150+00 TO 200+87 ... Marin Yacht Harbor
 STA. 150+00 TO 200+87 ... San Rafael Yacht Harbor
 FLOOD => SLACK => EBB TIDE SURVEY 5.2 FL => 6.5 FL => 6.4 FL

PRELIMINARY ISSUE
 THIS PLAN ISSUED FOR
 ADVANCE INFORMATION ONLY

DESIGNED BY:	PDT	CHECKED BY:	PDT	DRAWN BY:	PDT
DATE:	1/31/2012	SHEET NO.:	1 OF 3	DRAWING NO.:	55 2
APPROVAL RECOMMENDED:			PREPARED UNDER THE DIRECTION OF		
Torrey A. Diciro			Torrey A. Diciro		
APPROVED:			LT. COLONEL, C.E., DISTRICT ENGINEER		
SUBMITTED:			Chief, Construction Branch		

MARIN COUNTY CALIFORNIA
 SAN RAFAEL CREEK
 POSTDRUDGE SURVEY
 5, 9, 25, 29 & 31 JANUARY 2012

Sheet reference number
C1