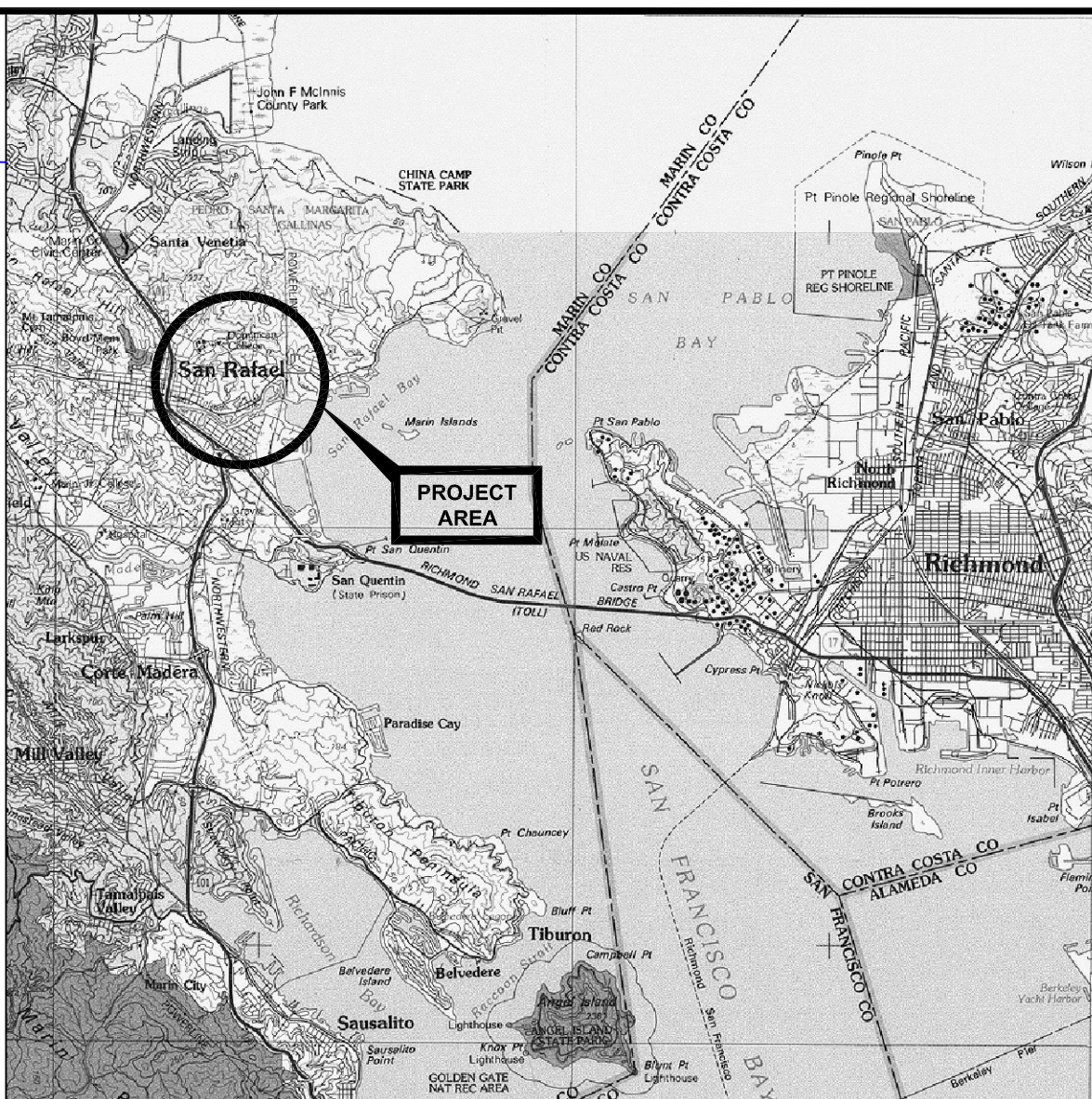


PRELIMINARY ISSUE
THIS PLAN ISSUED FOR
ADVANCE INFORMATION ONLY



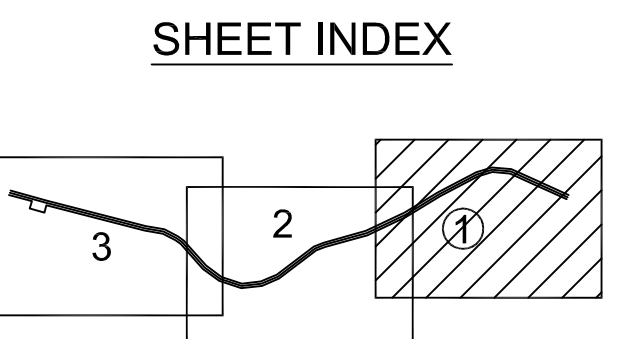
VICINITY MAP
NOT TO SCALE

NAD 83
CHANNEL ANGLE POINTS

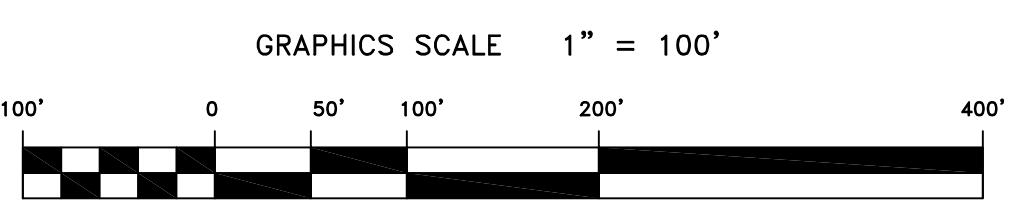
| PT | X | Y |
|----|------------|------------|
| 1 | 5987101.87 | 2181719.45 |
| 2 | 5986637.57 | 2181930.55 |
| 3 | 5986341.67 | 2182065.05 |
| 4 | 5986094.97 | 2182084.85 |
| 5 | 5985874.27 | 2182021.75 |
| 6 | 5985365.97 | 2181755.85 |
| 7 | 5984921.77 | 2181484.65 |
| 8 | 5984410.57 | 2181241.65 |
| 9 | 5983853.17 | 2181087.55 |
| 10 | 5983720.27 | 2181037.35 |
| 11 | 5983227.77 | 2180660.75 |
| 12 | 5983015.77 | 2180571.65 |
| 13 | 5982762.27 | 2180543.75 |
| 14 | 5982489.47 | 2180632.75 |
| 15 | 5982285.67 | 2180782.65 |
| 16 | 5981993.57 | 2181111.65 |
| 17 | 5981912.57 | 2181172.85 |
| 18 | 5981730.27 | 2181264.65 |
| 19 | 5981482.97 | 2181305.55 |
| 20 | 5980180.57 | 2181641.55 |
| 21 | 5979689.27 | 2181778.35 |
| 22 | 5979668.87 | 2181721.75 |
| 23 | 5979972.37 | 2181637.25 |
| 24 | 5979945.57 | 2181540.95 |
| 25 | 5980138.27 | 2181487.25 |
| 26 | 5980165.07 | 2181583.65 |
| 27 | 5981470.57 | 2181246.85 |
| 28 | 5981713.67 | 2181206.95 |
| 29 | 5981880.67 | 2181121.75 |
| 30 | 5981952.57 | 2181067.35 |
| 31 | 5982244.97 | 2180738.05 |
| 32 | 5982461.67 | 2180576.65 |
| 33 | 5982755.97 | 2180459.65 |
| 34 | 5983030.97 | 2180512.95 |
| 35 | 5983258.17 | 2180608.45 |
| 36 | 5983749.77 | 2180984.35 |
| 37 | 5983871.87 | 2181030.45 |
| 38 | 5984431.57 | 2181185.15 |
| 39 | 5984950.27 | 2181431.85 |
| 40 | 5985395.57 | 2181703.65 |
| 41 | 5985896.97 | 2181965.95 |
| 42 | 5986091.47 | 2182024.15 |
| 43 | 5986326.57 | 2182006.05 |
| 44 | 5987076.97 | 2181664.85 |

NAD 83
CENTERLINE ANGLE POINTS

| PT | X | Y |
|-----|------------|------------|
| C1 | 5987089.37 | 2181692.15 |
| C2 | 5986334.07 | 2182035.55 |
| C3 | 5986088.27 | 2182054.45 |
| C4 | 5985885.57 | 2181993.85 |
| C5 | 5985380.77 | 2181729.75 |
| C6 | 5984935.97 | 2181458.25 |
| C7 | 5984421.07 | 2181213.45 |
| C8 | 5983862.47 | 2181058.95 |
| C9 | 5983735.07 | 2181010.85 |
| C10 | 5983242.97 | 2180634.65 |
| C11 | 5983023.37 | 2180542.35 |
| C12 | 5982759.17 | 2180513.25 |
| C13 | 5982475.57 | 2180605.75 |
| C14 | 5982265.37 | 2180760.35 |
| C15 | 5981973.07 | 2181089.55 |
| C16 | 5981896.67 | 2181147.35 |
| C17 | 5981723.17 | 2181235.75 |
| C18 | 5981476.77 | 2181276.25 |
| C19 | 5980172.77 | 2181612.05 |
| C20 | 5979679.07 | 2181750.05 |



SHEET INDEX



NOTES:
DRAWINGS NOT TO BE USED AS NAVIGATION. ONLY CHANNEL CONDITION AT DATE OF SURVEY. THE LOCATION OF ALL NAVIGATION AIDS ARE BASED ON INFORMATION PROVIDED BY THE U.S. COAST GUARD SURVEY BUOY LOCATIONS REPRESENT THE POSITION OF THE SINKER ONLY.
SURVEYED BY THE CORPS OF ENGINEERS.
23 APRIL 2009 - 119+00 TO 134+00
05 MAY 2009 - 135+00 TO 200+87
SOUNDINGS ARE TAKEN BY FATHOMETER AND ARE SHOWN TO THE NEAREST FOOT AND TENTHS OF A FOOT.
SOUNDINGS ARE BASED ON THE DATUM OF MEAN LOWER LOW WATER AT THE LOCALITY. NGVD 1929.
PLANE GRID AND COORDINATES ARE BASED ON LAMBERT PROJECTION, ZONE III NAD 83, CALIFORNIA, AS DESCRIBED IN SPECIAL PUBLICATION NO. 235, PUBLISHED BY THE NATIONAL OCEAN SURVEY.
THE PROJECT DEPTH IS 8 FEET IN 100 FT. WIDE CHANNEL ACROSS THE FLATS AND 6 FT. IN 60 FT. WIDE CHANNEL CREEK TO IRWIN STREET.
HORIZONTAL CONTROL: RTK GPS VIA VRS NETWORK, COAST GUARD D-BEACON
VERTICAL CONTROL: BENCHMARK, MLLW ELEV., AGENCY B.M. TIDAL 17 (1951), USCGS DISK, 9.73 MLLW HARBOR ST, PUMPHOUSE, EAST FRANCISCO BLVD., B.M. L 551 (1956), USCGS DISK, 15.61 MLLW SAN RAFAEL SANITARY DIST. PUMPHOUSE, PT. SAN PEDRO RD.
TIDE GAGE LOCATION: SAN RAFAEL YACHT HARBOR & MARIN YACHT HARBOR STA. 119+00 TO 150+00 ... Marin Yacht Harbor STA. 150+00 TO 200+87 ... San Rafael Yacht Harbor FLOOD => SLACK => EBB TIDE SURVEY 5.2 FT => 6.5 FT => 6.4 FT.

US Army Corps of Engineers
San Francisco District
1455 Market Street
San Francisco, CA 94103

| Mark | Description | Date | Appr. |
|------|-------------|------|-------|
| | | | |
| | | | |
| | | | |
| | | | |
| | | | |
| | | | |
| | | | |
| | | | |
| | | | |
| | | | |
| | | | |

| SUBMITTED: | DESIGNED BY: | CHECKED BY: | DRAWN BY: |
|----------------------------------|------------------|---|---------------|
| Hydro Survey Team Leader | TJV | TJV | EWC |
| APPROVAL RECOMMENDED: | SHEET NO. 1 OF 3 | DRAWING NO. 55 | DRAWING NO. 2 |
| CHIEF, Technical Support Section | DATE: 5/6/2009 | PREPARED UNDER THE DIRECTION OF LAURENCE M. FARRELL | DATE: 2 149 |
| APPROVED: | | LT. COLONEL, C.E., DISTRICT ENGINEER | |
| Chief, Construction Branch | | | |

CALIFORNIA
MARIN COUNTY
SAN RAFAEL CREEK
CONDITION SURVEY
23 APRIL AND 05 MAY 2009

Sheet reference number
C1