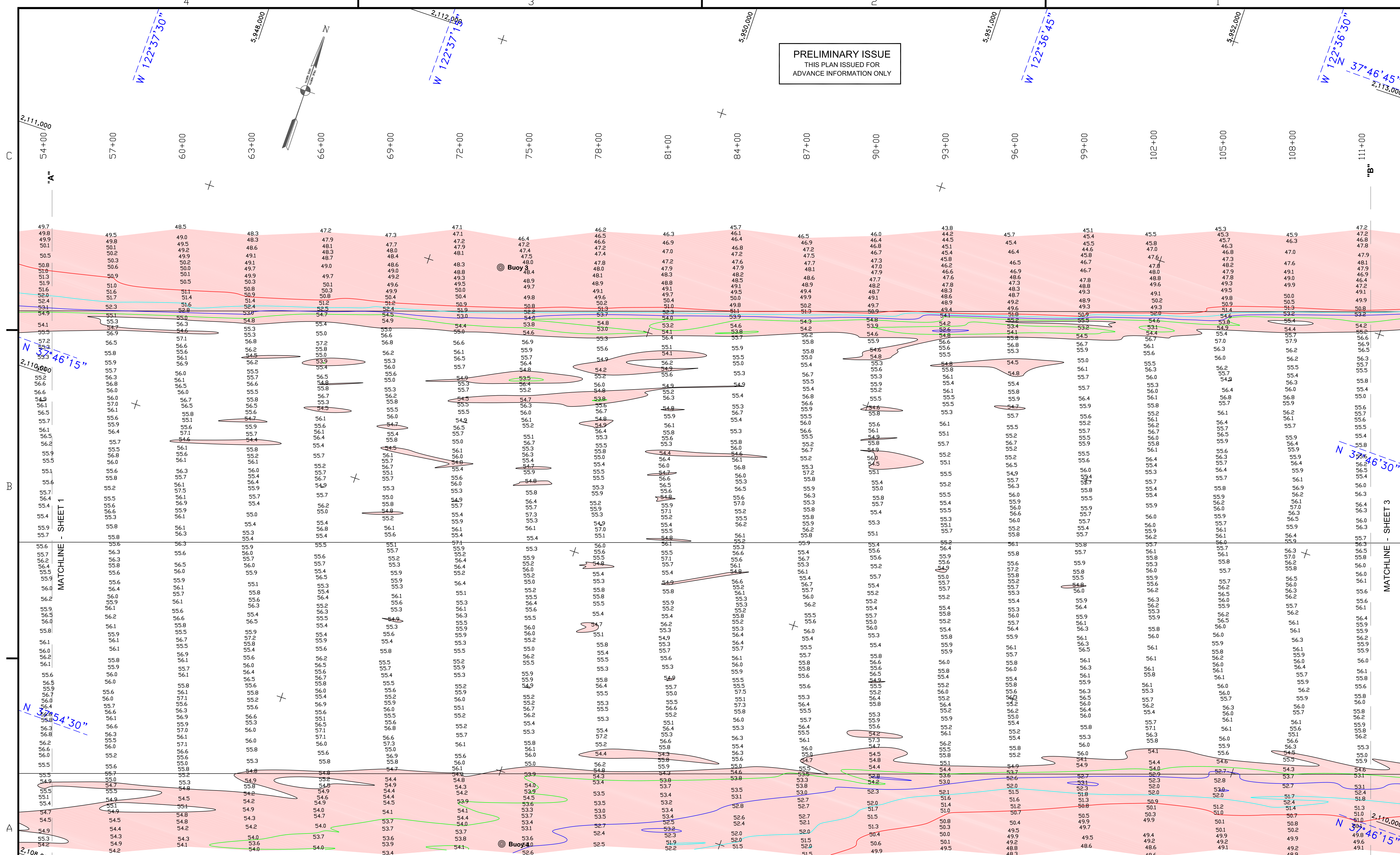


PRELIMINARY ISSUE
 THIS PLAN ISSUED FOR
 ADVANCE INFORMATION ONLY



Date	Description	Mark	Appr.

DESIGNED BY: PDT
 CHECKED BY: PWT
 DRAWN BY: EWC
 APPROVAL RECOMMENDED: DATE: 7/10/2013
 SHEET NO. 2 OF 5
 DRAWING NO. 1 2
 PREPARED UNDER THE DIRECTION OF JOHN K. BAKER
 LT. COLONEL, C.E., DISTRICT ENGINEER
 SUBMITTED: Hydros. Survey from Leader
 CHIEF, Hydro. Survey Section
 APPROVED: CHIEF, Construction Branch

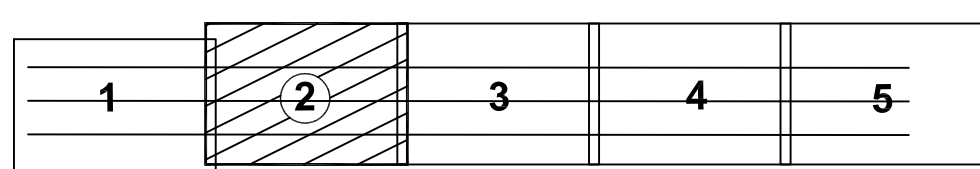
CALIFORNIA
SAN FRANCISCO MAINSHIP CHANNEL
 POSTDREDGE SURVEY
 21-22 JUNE & 09 JULY 2013

Sheet reference number
C2

GRAPHICS SCALE 1" = 200'



SHEET INDEX



4 3 2 1
 W 122°37'30"
 5,948,000
 2,112,000
 5,950,000
 5,951,000
 5,952,000
 W 122°36'45"
 2,113,000
 54+00 57+00 60+00 63+00 66+00 69+00 72+00 75+00 78+00 81+00 84+00 87+00 90+00 93+00 96+00 99+00 102+00 105+00 108+00 111+00
 "A" "B"
 49.7 49.8 49.9 50.1 50.5 50.8 51.0 51.3 51.9 51.6 52.4 53.1 54.9 54.1 55.5 57.2 58.3 58.8 59.9 56.2 57.7 58.2 58.6 59.0 59.4 59.8 60.2 60.6 61.0 61.4 61.8 62.2 62.6 63.0 63.4 63.8 64.2 64.6 65.0 65.4 65.8 66.2 66.6 67.0 67.4 67.8 68.2 68.6 69.0 69.4 69.8 70.2 70.6 71.0 71.4 71.8 72.2 72.6 73.0 73.4 73.8 74.2 74.6 75.0 75.4 75.8 76.2 76.6 77.0 77.4 77.8 78.2 78.6 79.0 79.4 79.8 80.2 80.6 81.0 81.4 81.8 82.2 82.6 83.0 83.4 83.8 84.2 84.6 85.0 85.4 85.8 86.2 86.6 87.0 87.4 87.8 88.2 88.6 89.0 89.4 89.8 90.2 90.6 91.0 91.4 91.8 92.2 92.6 93.0 93.4 93.8 94.2 94.6 95.0 95.4 95.8 96.2 96.6 97.0 97.4 97.8 98.2 98.6 99.0 99.4 99.8 100.2 100.6 101.0 101.4 101.8 102.2 102.6 103.0 103.4 103.8 104.2 104.6 105.0 105.4 105.8 106.2 106.6 107.0 107.4 107.8 108.2 108.6 109.0 109.4 109.8 110.2 110.6 111.0
 N 37°46'15"
 2,110,000
 N 37°46'30"
 N 37°54'30"
 2,108,000
 5,949,000
 5,950,000
 5,951,000
 5,952,000
 W 122°37'00"
 W 122°36'30"
 N 37°46'15"
 2,110,000
 2,109,000
 5,953,000
 W 122°36'15"
 "A" "B"
 55.6 55.5 55.4 55.3 55.2 55.1 55.0 54.9 54.8 54.7 54.6 54.5 54.4 54.3 54.2 54.1 54.0 53.9 53.8 53.7 53.6 53.5 53.4 53.3 53.2 53.1 53.0 52.9 52.8 52.7 52.6 52.5 52.4 52.3 52.2 52.1 52.0 51.9 51.8 51.7 51.6 51.5 51.4 51.3 51.2 51.1 51.0 50.9 50.8 50.7 50.6 50.5 50.4 50.3 50.2 50.1 50.0 49.9 49.8 49.7 49.6 49.5 49.4 49.3 49.2 49.1 49.0 48.9 48.8 48.7 48.6 48.5 48.4 48.3 48.2 48.1 48.0 47.9 47.8 47.7 47.6 47.5 47.4 47.3 47.2 47.1 47.0 46.9 46.8 46.7 46.6 46.5 46.4 46.3 46.2 46.1 46.0 45.9 45.8 45.7 45.6 45.5 45.4 45.3 45.2 45.1 45.0 44.9 44.8 44.7 44.6 44.5 44.4 44.3 44.2 44.1 44.0 43.9 43.8 43.7 43.6 43.5 43.4 43.3 43.2 43.1 43.0 42.9 42.8 42.7 42.6 42.5 42.4 42.3 42.2 42.1 42.0 41.9 41.8 41.7 41.6 41.5 41.4 41.3 41.2 41.1 41.0 40.9 40.8 40.7 40.6 40.5 40.4 40.3 40.2 40.1 40.0 39.9 39.8 39.7 39.6 39.5 39.4 39.3 39.2 39.1 39.0 38.9 38.8 38.7 38.6 38.5 38.4 38.3 38.2 38.1 38.0 37.9 37.8 37.7 37.6 37.5 37.4 37.3 37.2 37.1 37.0 36.9 36.8 36.7 36.6 36.5 36.4 36.3 36.2 36.1 36.0 35.9 35.8 35.7 35.6 35.5 35.4 35.3 35.2 35.1 35.0 34.9 34.8 34.7 34.6 34.5 34.4 34.3 34.2 34.1 34.0 33.9 33.8 33.7 33.6 33.5 33.4 33.3 33.2 33.1 33.0 32.9 32.8 32.7 32.6 32.5 32.4 32.3 32.2 32.1 32.0 31.9 31.8 31.7 31.6 31.5 31.4 31.3 31.2 31.1 31.0 30.9 30.8 30.7 30.6 30.5 30.4 30.3 30.2 30.1 30.0 29.9 29.8 29.7 29.6 29.5 29.4 29.3 29.2 29.1 29.0 28.9 28.8 28.7 28.6 28.5 28.4 28.3 28.2 28.1 28.0 27.9 27.8 27.7 27.6 27.5 27.4 27.3 27.2 27.1 27.0 26.9 26.8 26.7 26.6 26.5 26.4 26.3 26.2 26.1 26.0 25.9 25.8 25.7 25.6 25.5 25.4 25.3 25.2 25.1 25.0 24.9 24.8 24.7 24.6 24.5 24.4 24.3 24.2 24.1 24.0 23.9 23.8 23.7 23.6 23.5 23.4 23.3 23.2 23.1 23.0 22.9 22.8 22.7 22.6 22.5 22.4 22.3 22.2 22.1 22.0 21.9 21.8 21.7 21.6 21.5 21.4 21.3 21.2 21.1 21.0 20.9 20.8 20.7 20.6 20.5 20.4 20.3 20.2 20.1 20.0 19.9 19.8 19.7 19.6 19.5 19.4 19.3 19.2 19.1 19.0 18.9 18.8 18.7 18.6 18.5 18.4 18.3 18.2 18.1 18.0 17.9 17.8 17.7 17.6 17.5 17.4 17.3 17.2 17.1 17.0 16.9 16.8 16.7 16.6 16.5 16.4 16.3 16.2 16.1 16.0 15.9 15.8 15.7 15.6 15.5 15.4 15.3 15.2 15.1 15.0 14.9 14.8 14.7 14.6 14.5 14.4 14.3 14.2 14.1 14.0 13.9 13.8 13.7 13.6 13.5 13.4 13.3 13.2 13.1 13.0 12.9 12.8 12.7 12.6 12.5 12.4 12.3 12.2 12.1 12.0 11.9 11.8 11.7 11.6 11.5 11.4 11.3 11.2 11.1 11.0 10.9 10.8 10.7 10.6 10.5 10.4 10.3 10.2 10.1 10.0 9.9 9.8 9.7 9.6 9.5 9.4 9.3 9.2 9.1 9.0 8.9 8.8 8.7 8.6 8.5 8.4 8.3 8.2 8.1 8.0 7.9 7.8 7.7 7.6 7.5 7.4 7.3 7.2 7.1 7.0 6.9 6.8 6.7 6.6 6.5 6.4 6.3 6.2 6.1 6.0 5.9 5.8 5.7 5.6 5.5 5.4 5.3 5.2 5.1 5.0 4.9 4.8 4.7 4.6 4.5 4.4 4.3 4.2 4.1 4.0 3.9 3.8 3.7 3.6 3.5 3.4 3.3 3.2 3.1 3.0 2.9 2.8 2.7 2.6 2.5 2.4 2.3 2.2 2.1 2.0 1.9 1.8 1.7 1.6 1.5 1.4 1.3 1.2 1.1 1.0 0.9 0.8 0.7 0.6 0.5 0.4 0.3 0.2 0.1 0.0