

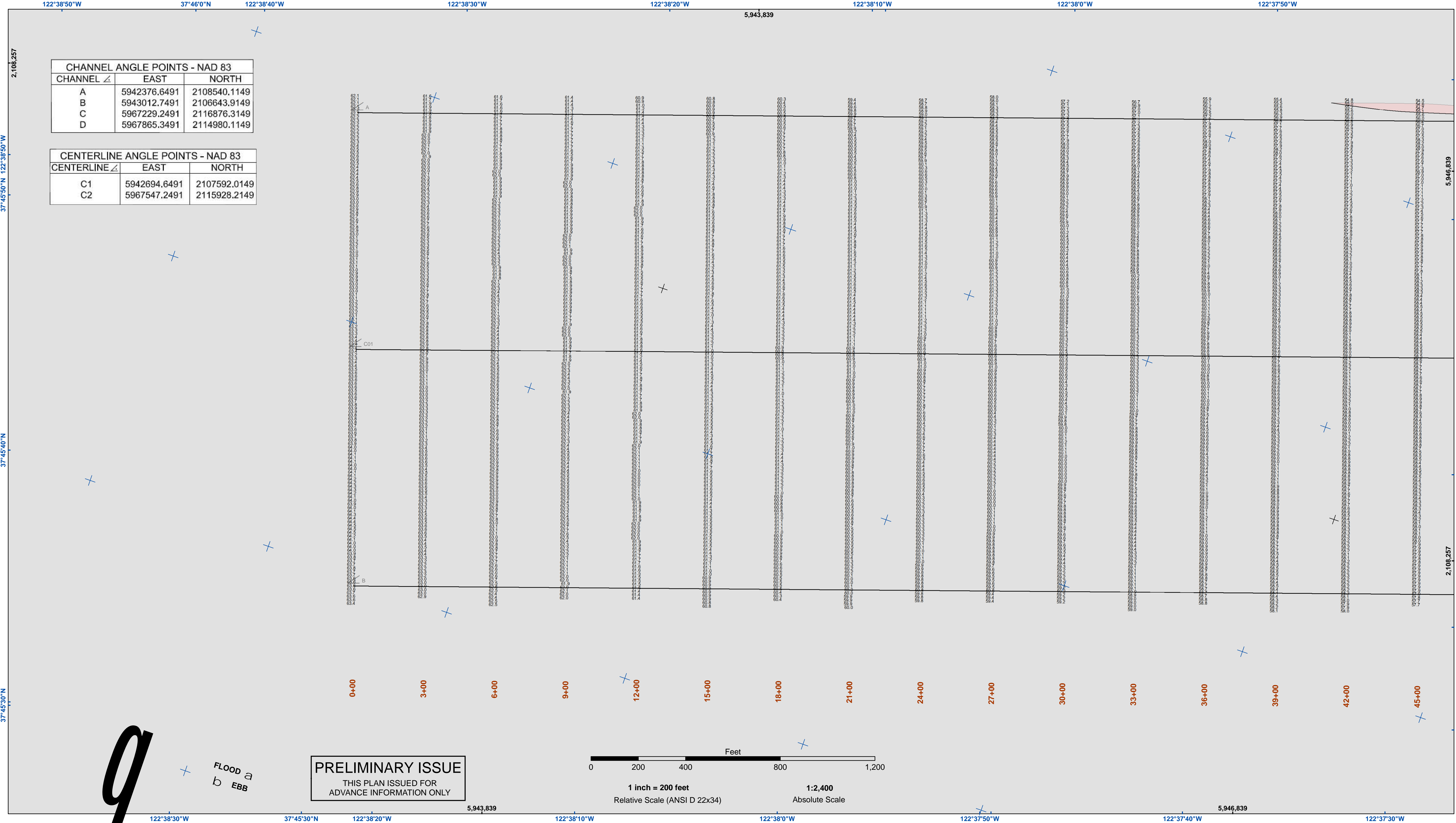


DISCLAIMER
The United States Government furnishes this information for the general public and does not warrant, express or implied, the accuracy, completeness, or reliability of the information. The user is responsible for the results of any application of the data for other than its intended purpose. The United States Government shall not be liable for any damages, including consequential damages, arising from the use of this information. The recipient may not transfer these data to others without also transferring this disclaimer.

Prepared Under the Direction of JOHN C. MORROW LT. COLONEL, C.E., DISTRICT ENGINEER	Chart Date: Jun 14, 2016
Submitted: Hydro Survey Team Leader	Designed by: PDT
Recommended: Chief, Hydro Survey Section	Drawn by: PDT
Approved: Chief, Construction Branch	PDT

SAN FRANCISCO BAY
CALIFORNIA
SAN FRANCISCO MAINSHIP CHANNEL
CONDITION SURVEY
06 JUNE 2016

Sheet Reference Number
1 of 5



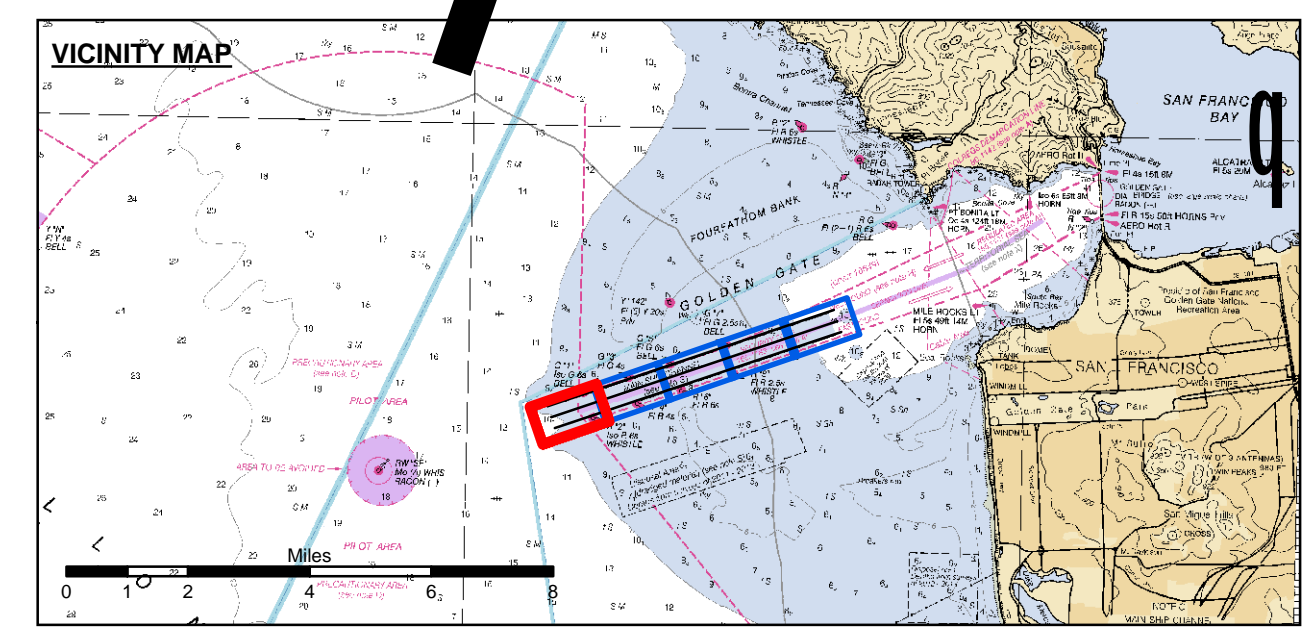
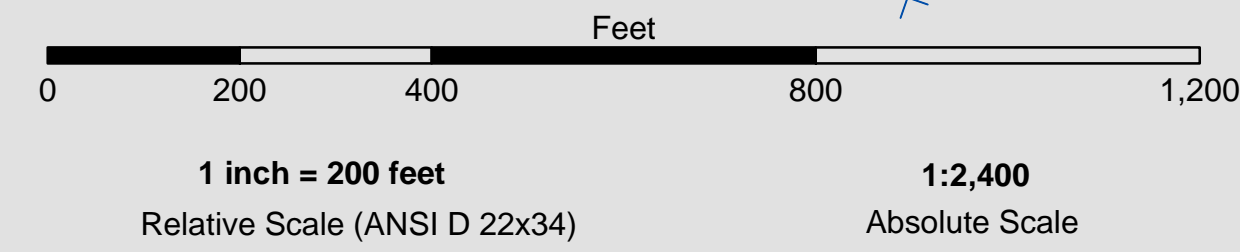
CHANNEL ANGLE POINTS - NAD 83

CHANNEL ∟	EAST	NORTH
A	5942376.6491	2108540.1149
B	5943012.7491	2106643.9149
C	5967229.2491	2116876.3149
D	5967865.3491	2114980.1149

CENTERLINE ANGLE POINTS - NAD 83

CENTERLINE ∟	EAST	NORTH
C1	5942694.6491	2107592.0149
C2	5967547.2491	2115928.2149

PRELIMINARY ISSUE
THIS PLAN ISSUED FOR
ADVANCE INFORMATION ONLY



- | | | |
|----------------------------|--------------------|------------------|
| Federal Navigation Channel | Beacon, General | Contour Lines 51 |
| Shoaling Area | Obstruction Point | Contour Lines 52 |
| Placement Area | Navigation Buoy | Contour Lines 53 |
| Anchorage Area | Navigation Buoy | Contour Lines 54 |
| Wreck Area | Shoalest Sounding* | Contour Lines 55 |
| Submerged Wreck | | |
| Angle Point | | |

NOTES:
HORIZONTAL COORDINATE SYSTEM:
NORTH AMERICAN DATUM OF 1983 (NAD83), PROJECTED TO THE STATE PLANE COORDINATE SYSTEM (SPCS), CALIFORNIA ZONE III. DISTANCE UNITS IN U.S. SURVEY FEET.
VERTICAL DATUM:
SOUNDINGS ARE SHOWN IN FEET AND INDICATE DEPTHS BELOW MEAN LOWER LOW WATER.
THE INFORMATION DEPICTED ON THIS MAP REPRESENTS THE RESULTS OF A SURVEY CONDUCTED ON THE DATE INDICATED AND CAN ONLY BE CONSIDERED AS INDICATING THE GENERAL CONDITION EXISTING AT THAT TIME.
*SHOALEST SOUNDING PER QUARTER PER REACH

DRAWING NOT TO BE USED FOR NAVIGATION, ONLY CHANNEL CONDITION AT DATE OF SURVEY. THE LOCATION OF ALL NAVIGATION AIDS ARE BASED ON INFORMATION PROVIDED BY THE U.S. COAST GUARD. BUOY LOCATIONS REPRESENT THE POSITION OF THE SINKER ONLY.

INFORMATION DEPICTED ON THIS MAP REPRESENTS THE RESULTS OF SURVEYS MADE ON THE DATES INDICATED AND CAN ONLY BE CONSIDERED AS INDICATING THE GENERAL CONDITIONS AT THAT TIME SURVEYED BY THE CORPS OF ENGINEERS.

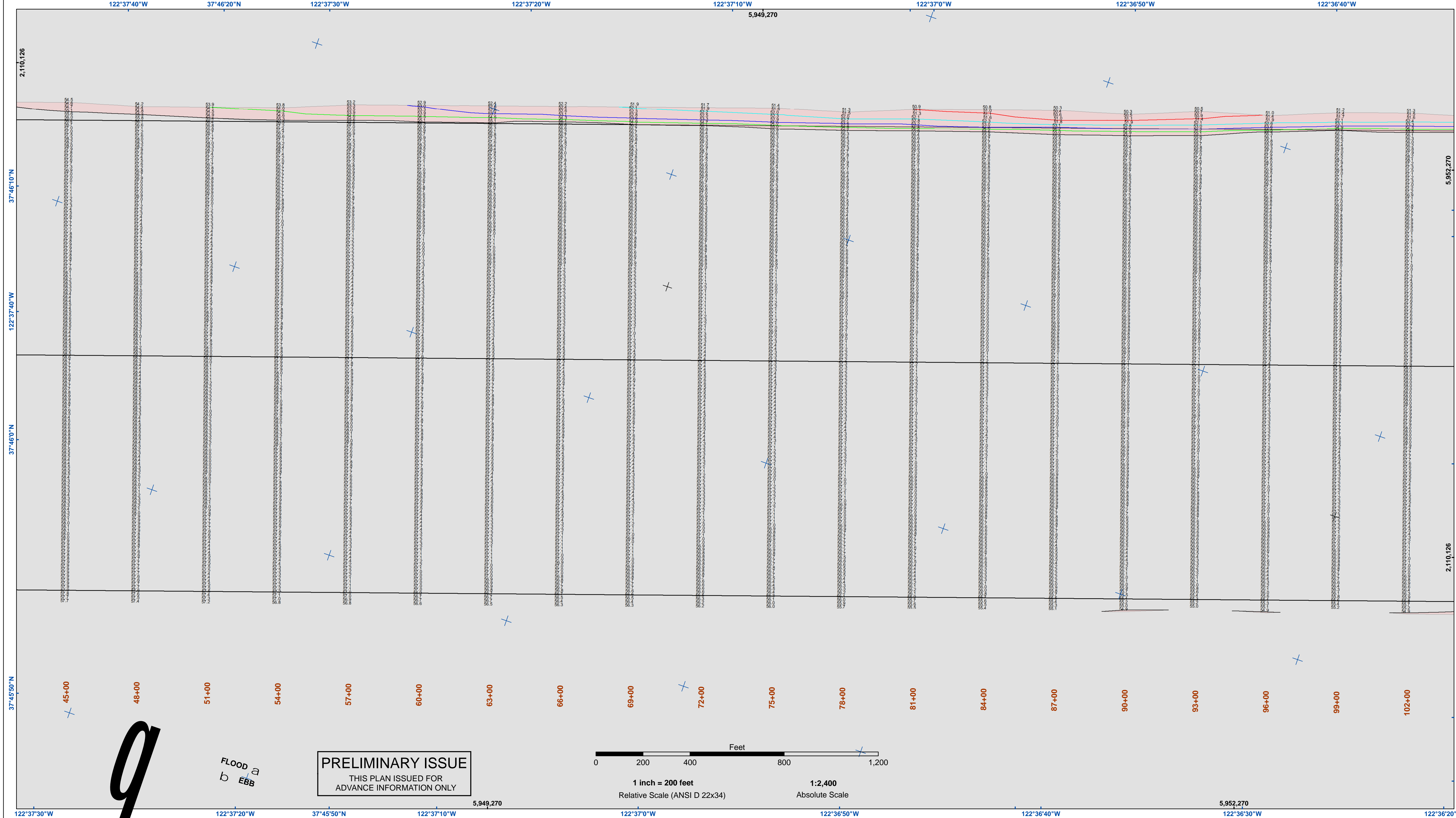
SOUNDINGS WERE TAKEN BY FATHOMETER AND ARE SHOWN TO THE NEAREST TENTH OF A FOOT. SOUNDINGS ARE BASED ON THE DATUM OF MEAN LOWER LOW WATER AT THE LOCALITY, NAVD 88.

PLANE GRID, BEARING AND COORDINATES ARE BASED ON THE STATE OF CALIFORNIA COORDINATE SYSTEM, LAMBERT CONFORMAL PROJECTION, ZONE III NAD 83, CALIFORNIA, AS DESCRIBED IN SPECIAL PUBLICATION NO. 235, PUBLISHED BY NATIONAL OCEAN SURVEY.

THE PROJECT DEPTH IS 55 FEET AT M.L.L.W. SOUNDINGS ARE BASED ON THE TIDE GAUGE LOCATED AT THE HYDE STREET PIER, SAN FRANCISCO, CALIFORNIA.

VERTICAL CONTROL:
BENCHMARK "Q-481" US&GS DISK ELEV. 19.54 FT MLLW.

HORIZONTAL CONTROL:
COAST GUARD D-BEACON.



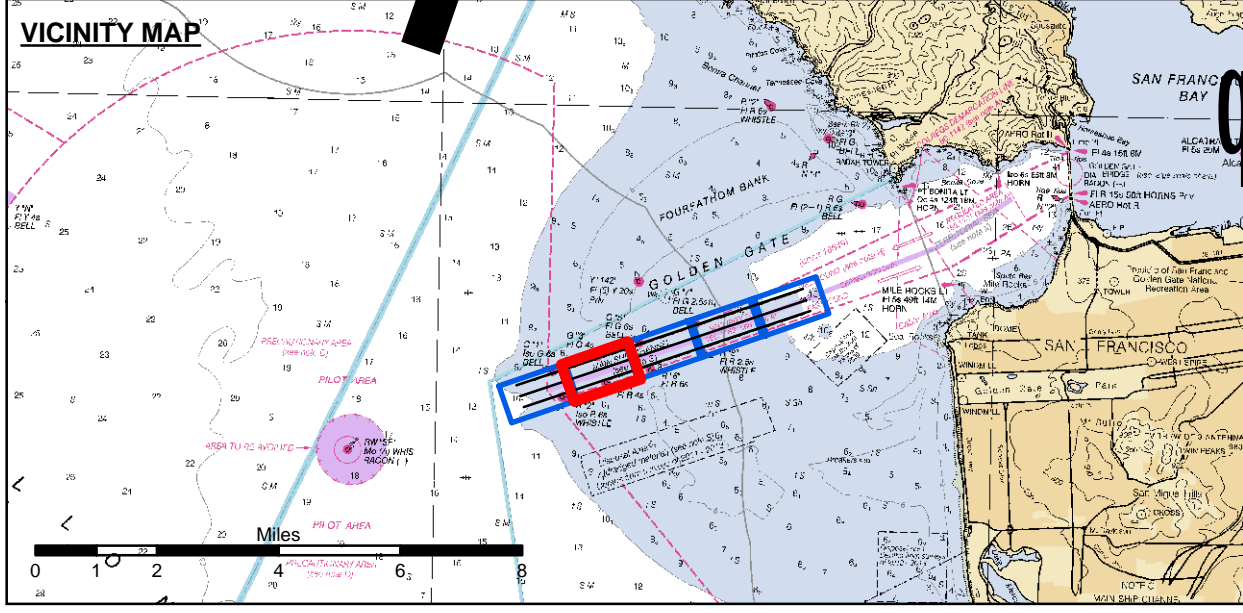
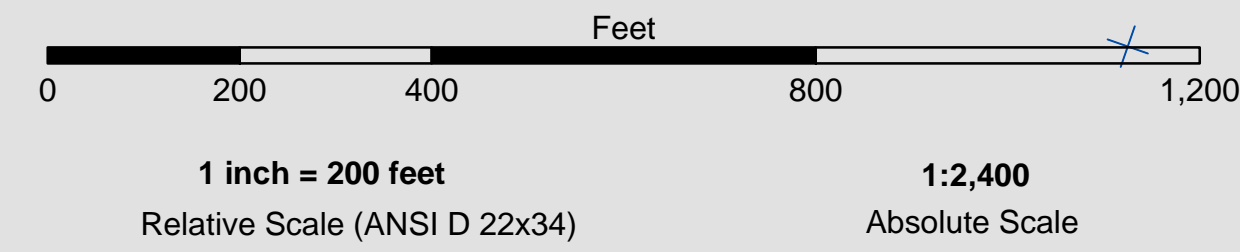
DISCLAIMER
 The United States Government furnishes this information for the general information of the user. The user is responsible for the results of any application of the data for other than its intended purpose. The United States Government makes no warranty, expressed or implied, concerning the accuracy, completeness, or reliability of the information furnished. The user shall assume all liability whatsoever to any person by reason of any use made hereof. These data belong to the Government. Therefore the recipient may not transfer these data to others without also transferring this disclaimer.

PREPARED UNDER THE DIRECTION OF JOHN C. MORROW LT. COLONEL, C.E., DISTRICT ENGINEER	Chart Date: Jun 14, 2016
Submitted by: Hydro Survey Team Leader	Designed by: PDT
Recommended by: Chief, Hydro Survey Section	Checked by: PDT
Approved by: Chief, Construction Branch	Drawn by: PDT

SAN FRANCISCO BAY
CALIFORNIA
SAN FRANCISCO
MAINSHIP CHANNEL
CONDITION SURVEY
06 JUNE 2016

Sheet Reference Number
2 of 5

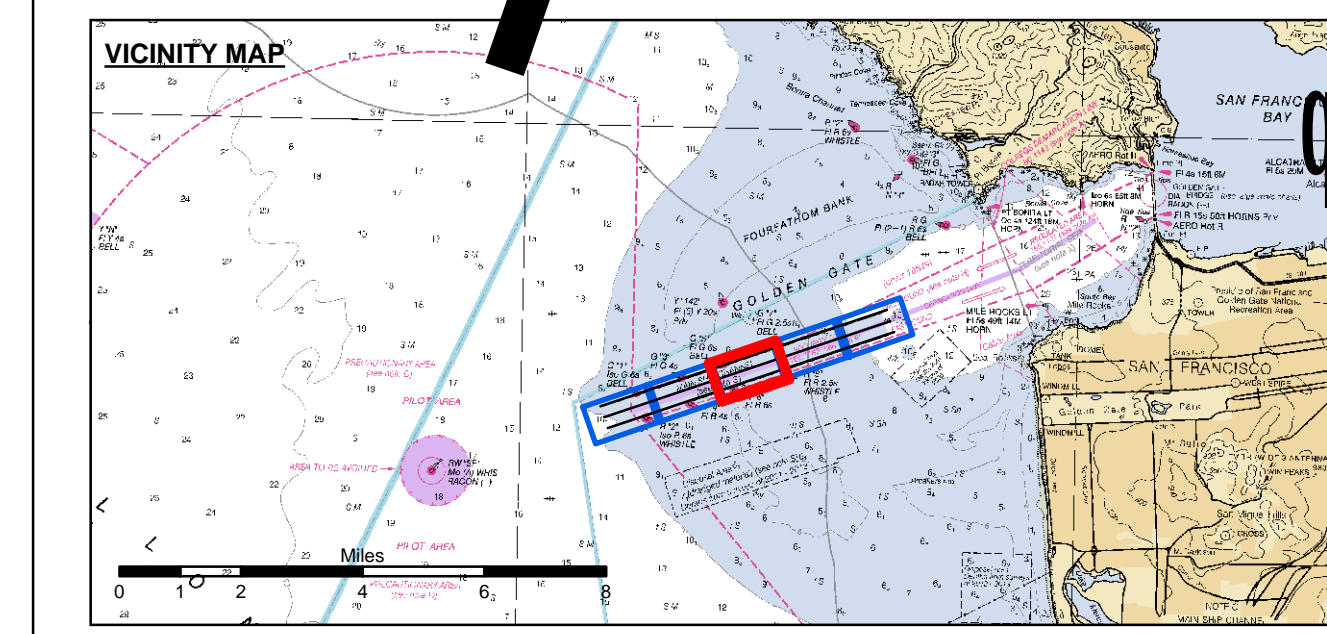
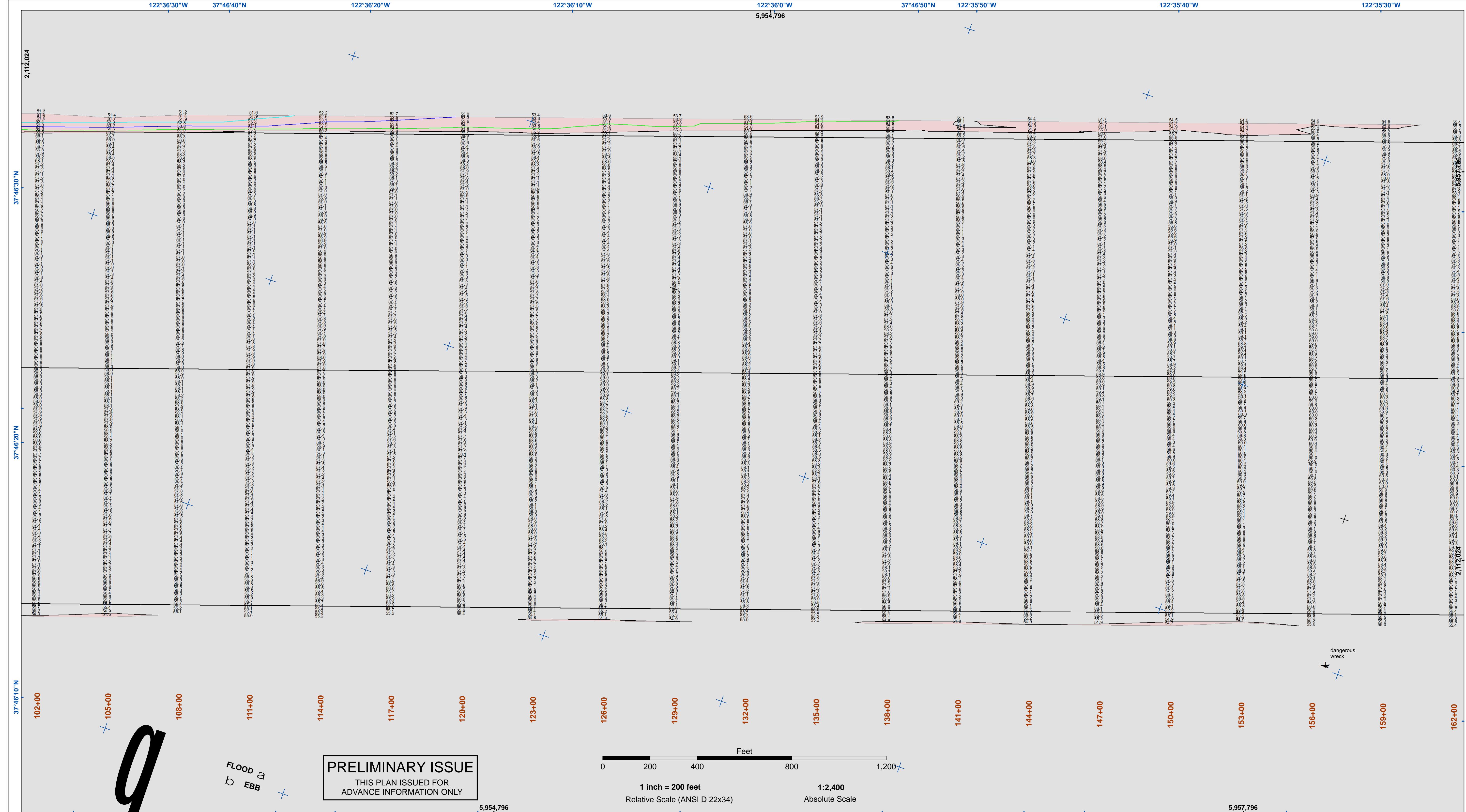
PRELIMINARY ISSUE
 THIS PLAN ISSUED FOR
 ADVANCE INFORMATION ONLY



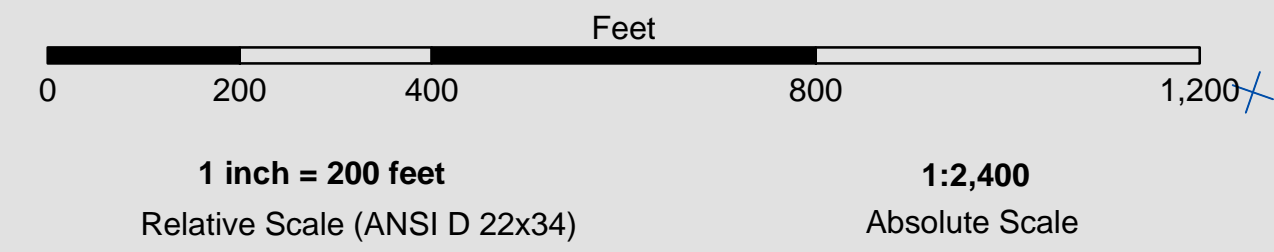
- | | | |
|----------------------------|--------------------|------------------|
| Federal Navigation Channel | Beacon, General | Contour Lines 51 |
| Shoaling Area | Obstruction Point | Contour Lines 52 |
| Placement Area | Navigation Buoy | Contour Lines 53 |
| Anchorage Area | Navigation Buoy | Contour Lines 54 |
| Wreck Area | Shoalest Sounding* | Contour Lines 55 |
| Submerged Wreck | | |
| Angle Point | | |

NOTES:
 HORIZONTAL COORDINATE SYSTEM:
 NORTH AMERICAN DATUM OF 1983 (NAD83), PROJECTED TO THE STATE PLANE COORDINATE SYSTEM (SPCS), CALIFORNIA ZONE III. DISTANCE UNITS IN U.S. SURVEY FEET.
 VERTICAL DATUM:
 SOUNDINGS ARE SHOWN IN FEET AND INDICATE DEPTHS BELOW MEAN LOWER LOW WATER.
 THE INFORMATION DEPICTED ON THIS MAP REPRESENTS THE RESULTS OF A SURVEY CONDUCTED ON THE DATE INDICATED AND CAN ONLY BE CONSIDERED TO REPRESENT THE GENERAL CONDITION EXISTING AT THAT TIME.
 *SHOALEST SOUNDING PER QUARTER PER REACH

DRAWING NOT TO BE USED FOR NAVIGATION, ONLY CHANNEL CONDITION AT DATE OF SURVEY.
 THE LOCATION OF ALL NAVIGATION AIDS ARE BASED ON INFORMATION PROVIDED BY THE U.S. COAST GUARD. BUOY LOCATIONS REPRESENT THE POSITION OF THE SINKER ONLY.
 INFORMATION DEPICTED ON THIS MAP REPRESENTS THE RESULTS OF SURVEYS MADE ON THE DATES INDICATED AND CAN ONLY BE CONSIDERED AS INDICATING THE GENERAL CONDITIONS AT THAT TIME.
 SURVEYED BY THE CORPS OF ENGINEERS.
 SOUNDINGS WERE TAKEN BY FATHOMETER AND ARE SHOWN TO THE NEAREST TENTH OF A FOOT. SOUNDINGS ARE BASED ON THE DATUM OF MEAN LOWER LOW WATER AT THE LOCALITY, NAVD 88.
 PLANE GRID, BEARING AND COORDINATES ARE BASED ON THE STATE OF CALIFORNIA COORDINATE SYSTEM, LAMBERT CONFORMAL PROJECTION, ZONE III NAD 83, CALIFORNIA, AS DESCRIBED IN SPECIAL PUBLICATION NO. 235, PUBLISHED BY NATIONAL OCEAN SURVEY.
 THE PROJECT DEPTH IS 55 FEET AT M.L.L.W. SOUNDINGS ARE BASED ON THE TIDE GAUGE LOCATED AT THE HYDE STREET PIER, SAN FRANCISCO, CALIFORNIA.
 VERTICAL CONTROL:
 BENCHMARK "Q-481" USCGS DISK ELEV. 19.54 FT MLLW.
 HORIZONTAL CONTROL:
 COAST GUARD D-BEACON.



PRELIMINARY ISSUE
THIS PLAN ISSUED FOR
ADVANCE INFORMATION ONLY



- | | | | | | | |
|--|----------------------------|--|--------------------|----------------------|--|----|
| | Federal Navigation Channel | | Beacon, General | Contour Lines | | 51 |
| | Shoaling Area | | Obstruction Point | | | 52 |
| | Placement Area | | Navigation Buoy | | | 53 |
| | Anchorage Area | | Navigation Buoy | | | 54 |
| | Wreck Area | | Shoalest Sounding* | | | 55 |
| | Submerged Wreck | | | | | |
| | Angle Point | | | | | |

NOTES:
HORIZONTAL COORDINATE SYSTEM:
NORTH AMERICAN DATUM OF 1983 (NAD83), PROJECTED TO THE STATE PLANE COORDINATE SYSTEM (SPCS), CALIFORNIA ZONE III. DISTANCE UNITS IN U.S. SURVEY FEET.
VERTICAL DATUM:
SOUNDINGS ARE SHOWN IN FEET AND INDICATE DEPTHS BELOW MEAN LOWER LOW WATER.
THE INFORMATION DEPICTED ON THIS MAP REPRESENTS THE RESULTS OF A SURVEY CONDUCTED ON THE DATE INDICATED AND CAN ONLY BE CONSIDERED TO REPRESENT THE GENERAL CONDITION EXISTING AT THAT TIME.
*SHOALEST SOUNDING PER QUARTER PER REACH

DRAWING NOT TO BE USED FOR NAVIGATION, ONLY CHANNEL CONDITION AT DATE OF SURVEY.
THE LOCATION OF ALL NAVIGATION AIDS ARE BASED ON INFORMATION PROVIDED BY THE U.S. COAST GUARD. BUOY LOCATIONS REPRESENT THE POSITION OF THE SINKER ONLY.
INFORMATION DEPICTED ON THIS MAP REPRESENTS THE RESULTS OF SURVEYS MADE ON THE DATES INDICATED AND CAN ONLY BE CONSIDERED AS INDICATING THE GENERAL CONDITIONS AT THAT TIME SURVEYED BY THE CORPS OF ENGINEERS.
SOUNDINGS WERE TAKEN BY FATHOMETER AND ARE SHOWN TO THE NEAREST TENTH OF A FOOT. SOUNDINGS ARE BASED ON THE DATUM OF MEAN LOWER LOW WATER AT THE LOCALITY, NAVD 88.
PLANE GRID, BEARING AND COORDINATES ARE BASED ON THE STATE OF CALIFORNIA COORDINATE SYSTEM, LAMBERT CONFORMAL PROJECTION, ZONE III NAD 83, CALIFORNIA, AS DESCRIBED IN SPECIAL PUBLICATION NO. 235, PUBLISHED BY NATIONAL OCEAN SURVEY.
THE PROJECT DEPTH IS 55 FEET AT M.L.L.W. SOUNDINGS ARE BASED ON THE TIDE GAUGE LOCATED AT THE HYDE STREET PIER, SAN FRANCISCO, CALIFORNIA.
VERTICAL CONTROL:
BENCHMARK "Q-481" USC&GS DISK ELEV. 19.54 FT MLLW.
HORIZONTAL CONTROL:
COAST GUARD D-BEACON.

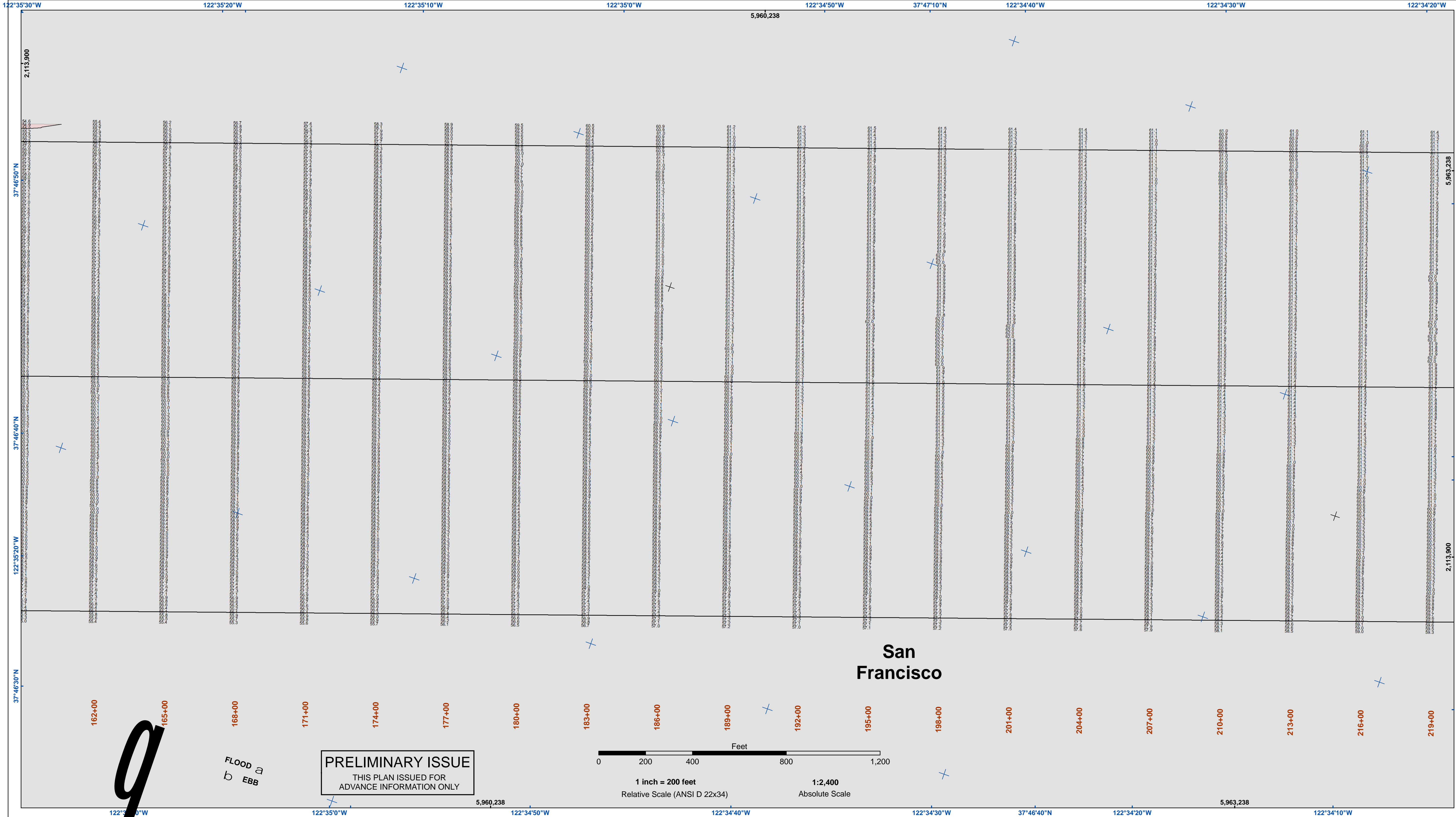
US Army Corps of Engineers
San Francisco District
1455 Market Street
San Francisco, CA 94103

DISCLAIMER
Access Comments: The United States Government furnishes this information as a service to the public and does not warrant, express or implied, the accuracy, completeness, or reliability of the data. The user is responsible for the results of any application of the data for other than its intended purpose.
Distribution Liability: The data represents the results of data collected by the United States Government. Engineers activity and indicates the general existing conditions. As such, it is only valid for its intended use, content, time and accuracy specifications. The user is responsible for the results of any application of the data for other than its intended purpose.
The United States Government makes no warranty, express or implied, concerning the accuracy, completeness, or reliability of the data. The user is responsible for the results of any application of the data for other than its intended purpose. These data belong to the Government. Therefore the recipient may not transfer these data to others without also transferring this disclaimer.

Prepared Under the Direction of JOHN C. MORROW LT. COLONEL, C.E., DISTRICT ENGINEER	Surveyed By:	Chart Date:
Submitted: Hydro Survey Team Leader	Plotted By: PDT	Jun 14, 2016
Recommended: Chief, Hydro Survey Section	Checked By: PDT	Designed by:
Approved: Chief, Construction Branch	Drawn by: PDT	

SAN FRANCISCO BAY
CALIFORNIA
SAN FRANCISCO MAINSHIP CHANNEL
CONDITION SURVEY
06 JUNE 2016

Sheet Reference Number
3 of 5



US Army Corps of Engineers
 San Francisco District
 1455 Market Street
 San Francisco, CA 94103

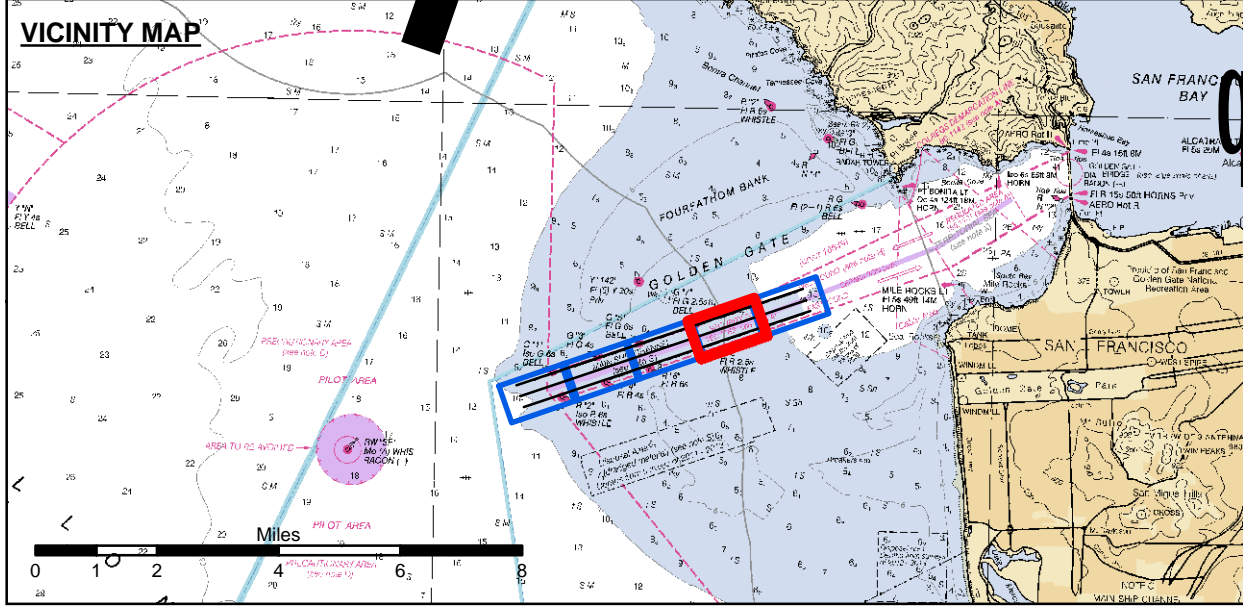
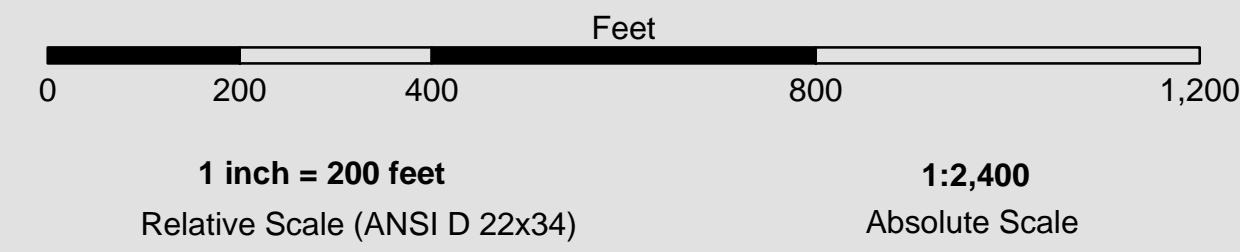
DISCLAIMER
 The United States Government furnishes this information for the general information of the user. The user is responsible for the results of any application of the data for other than its intended purpose. The United States Government makes no warranty, expressed or implied, concerning the accuracy, completeness, or reliability of the information furnished. The United States Government assumes no liability whatsoever to any person by reason of any use made thereof. These data belong to the Government. Therefore, the recipient may not transfer these data to others without also transferring this disclaimer.

Prepared Under the Direction of JOHN C. MORROW LT. COLONEL, C.E., DISTRICT ENGINEER	Surveyed By: PDT	Chart Date: Jun 14, 2016
Submitted: Hydro Survey Team Leader	Plotted By: PDT	Designed by: PDT
Recommended: Chief, Hydro Survey Section	Checked By: PDT	Drawn by: PDT
Approved: Chief, Construction Branch		

SAN FRANCISCO BAY
 CALIFORNIA
SAN FRANCISCO MAINSHIP CHANNEL
 CONDITION SURVEY
 06 JUNE 2016

Sheet Reference Number
 4 of 5

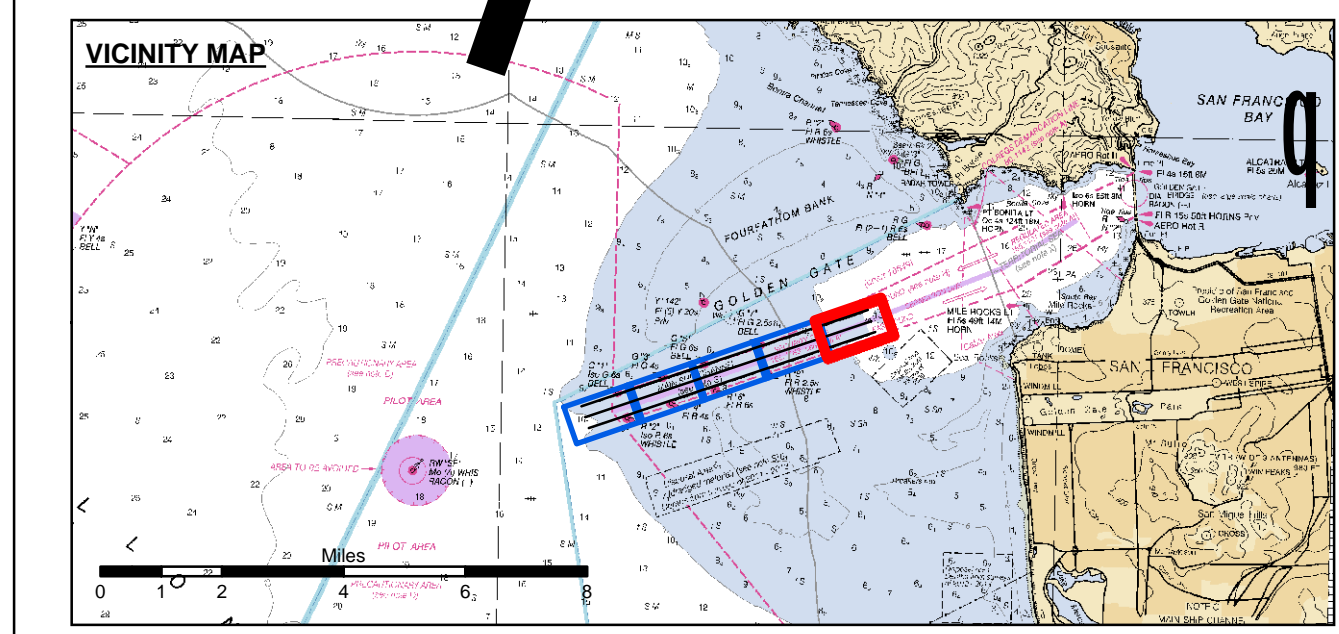
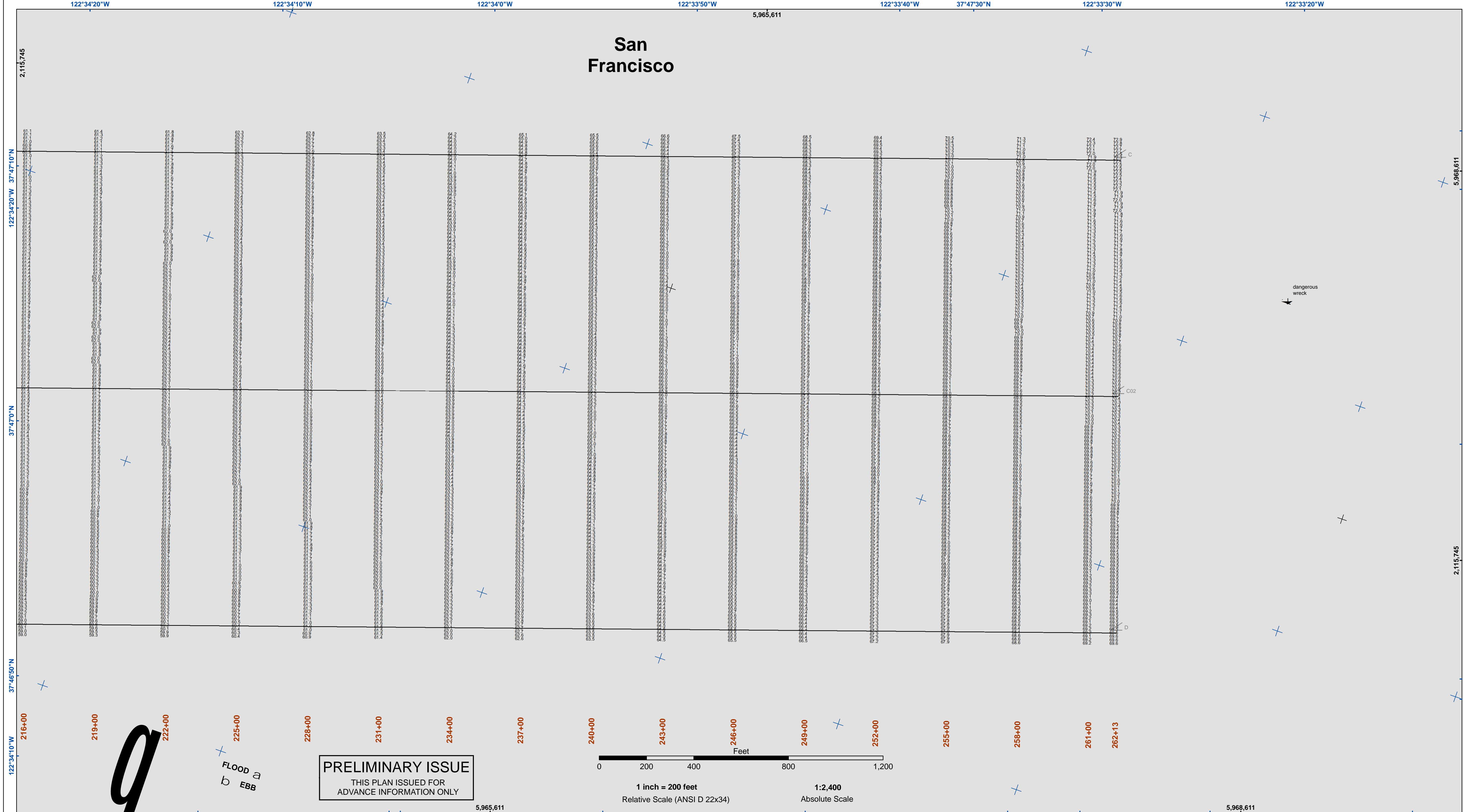
PRELIMINARY ISSUE
 THIS PLAN ISSUED FOR
 ADVANCE INFORMATION ONLY



	Federal Navigation Channel		Beacon, General		51
	Shoaling Area		Obstruction Point		52
	Placement Area		Navigation Buoy		53
	Anchorage Area		Navigation Buoy		54
	Wreck Area		Shoalest Sounding*		55
	Submerged Wreck				
	Angle Point				

NOTES:
 HORIZONTAL COORDINATE SYSTEM:
 NORTH AMERICAN DATUM OF 1983 (NAD83), PROJECTED TO THE STATE PLANE COORDINATE SYSTEM (SPCS), CALIFORNIA ZONE III. DISTANCE UNITS IN U.S. SURVEY FEET.
 VERTICAL DATUM:
 SOUNDINGS ARE SHOWN IN FEET AND INDICATE DEPTHS BELOW MEAN LOWER LOW WATER.
 THE INFORMATION DEPICTED ON THIS MAP REPRESENTS THE RESULTS OF A SURVEY CONDUCTED ON THE DATE INDICATED AND CAN ONLY BE CONSIDERED TO REPRESENT THE GENERAL CONDITION EXISTING AT THAT TIME.
 *SHOALEST SOUNDING PER QUARTER PER REACH

DRAWING NOT TO BE USED FOR NAVIGATION, ONLY CHANNEL CONDITION AT DATE OF SURVEY.
 THE LOCATION OF ALL NAVIGATION AIDS ARE BASED ON INFORMATION PROVIDED BY THE U.S. COAST GUARD. BUOY LOCATIONS REPRESENT THE POSITION OF THE SINKER ONLY.
 INFORMATION DEPICTED ON THIS MAP REPRESENTS THE RESULTS OF SURVEYS MADE ON THE DATES INDICATED AND CAN ONLY BE CONSIDERED AS INDICATING THE GENERAL CONDITIONS AT THAT TIME, SURVEYED BY THE CORPS OF ENGINEERS.
 SOUNDINGS WERE TAKEN BY FATHOMETER AND ARE SHOWN TO THE NEAREST TENTH OF A FOOT. SOUNDINGS ARE BASED ON THE DATUM OF MEAN LOWER LOW WATER AT THE LOCALITY, NAVD 88.
 PLANE GRID, BEARING AND COORDINATES ARE BASED ON THE STATE OF CALIFORNIA COORDINATE SYSTEM, LAMBERT CONFORMAL PROJECTION, ZONE III NAD 83, CALIFORNIA, AS DESCRIBED IN SPECIAL PUBLICATION NO. 235, PUBLISHED BY NATIONAL OCEAN SURVEY.
 THE PROJECT DEPTH IS 55 FEET AT M.L.L.W. SOUNDINGS ARE BASED ON THE TIDE GAUGE LOCATED AT THE HYDE STREET PIER, SAN FRANCISCO, CALIFORNIA.
 VERTICAL CONTROL:
 BENCHMARK "Q-481" USC&GS DISK ELEV. 19.54 FT MLLW.
 HORIZONTAL CONTROL:
 COAST GUARD D-BEACON.



	Federal Navigation Channel		Beacon, General	Contour Lines		51
	Shoaling Area		Obstruction Point		52	
	Placement Area		Navigation Buoy		53	
	Anchorage Area		Navigation Buoy		54	
	Wreck Area		Shoalest Sounding*		55	
	Submerged Wreck					
	Angle Point					

NOTES:
HORIZONTAL COORDINATE SYSTEM:
NORTH AMERICAN DATUM OF 1983 (NAD83), PROJECTED TO THE STATE PLANE COORDINATE SYSTEM (SPCS), CALIFORNIA ZONE III. DISTANCE UNITS IN U.S. SURVEY FEET.
VERTICAL DATUM:
SOUNDINGS ARE SHOWN IN FEET AND INDICATE DEPTHS BELOW MEAN LOWER LOW WATER.
THE INFORMATION DEPICTED ON THIS MAP REPRESENTS THE RESULTS OF A SURVEY CONDUCTED ON THE DATE INDICATED AND CAN ONLY BE CONSIDERED TO REPRESENT THE GENERAL CONDITION EXISTING AT THAT TIME.
*SHOALEST SOUNDING PER QUARTER PER REACH

DRAWING NOT TO BE USED FOR NAVIGATION, ONLY CHANNEL CONDITION AT DATE OF SURVEY.
THE LOCATION OF ALL NAVIGATION AIDS ARE BASED ON INFORMATION PROVIDED BY THE U.S. COAST GUARD. BUOY LOCATIONS REPRESENT THE POSITION OF THE SINKER ONLY.
INFORMATION DEPICTED ON THIS MAP REPRESENTS THE RESULTS OF SURVEYS MADE ON THE DATES INDICATED AND CAN ONLY BE CONSIDERED AS INDICATING THE GENERAL CONDITIONS AT THAT TIME.
SURVEYED BY THE CORPS OF ENGINEERS.
SOUNDINGS WERE TAKEN BY FATHOMETER AND ARE SHOWN TO THE NEAREST TENTH OF A FOOT. SOUNDINGS ARE BASED ON THE DATUM OF MEAN LOWER LOW WATER AT THE LOCALITY, NAVD 88.
PLANE GRID, BEARING AND COORDINATES ARE BASED ON THE STATE OF CALIFORNIA COORDINATE SYSTEM, LAMBERT CONFORMAL PROJECTION, ZONE III NAD 83, CALIFORNIA, AS DESCRIBED IN SPECIAL PUBLICATION NO. 235, PUBLISHED BY NATIONAL OCEAN SURVEY.
THE PROJECT DEPTH IS 55 FEET AT M.L.L.W. SOUNDINGS ARE BASED ON THE TIDE GAUGE LOCATED AT THE HYDE STREET PIER, SAN FRANCISCO, CALIFORNIA.
VERTICAL CONTROL:
BENCHMARK "Q-481" USC&GS DISK ELEV. 19.54 FT MLLW.
HORIZONTAL CONTROL:
COAST GUARD D-BEACON.

<p>PREPARED UNDER THE DIRECTION OF JOHN C. MORROW LT. COLONEL, C.E., DISTRICT ENGINEER</p> <p>Submitted: Hydro Survey Team Leader</p> <p>Recommended: Chief, Hydro Survey Section</p> <p>Approved: Chief, Construction Branch</p>	<p>Surveyed By:</p>	<p>Chart Date:</p>	<p>Designed by:</p>
	<p>Plotted By:</p>	<p>June 14, 2016</p>	<p>PDT</p>
	<p>Checked By:</p>	<p>PDT</p>	<p>PDT</p>
	<p>Drawn by:</p>	<p>PDT</p>	<p>PDT</p>

SAN FRANCISCO BAY
CALIFORNIA

SAN FRANCISCO
MAINSHIP CHANNEL
CONDITION SURVEY
06 JUNE 2016

Sheet
Reference
Number
5 of 5

DISCLAIMER
The United States Government furnishes this information as a public service. It is not intended to be used for navigation. The user is responsible for the results of any application of the data for other than its intended purpose. The United States Government makes no warranty, expressed or implied, concerning the accuracy, completeness, or timeliness of the information furnished. The United States Government assumes no liability whatsoever to any person by reason of any use made thereof. These data belong to the Government. Therefore the recipient may not transfer these data to others without also transferring this disclaimer.