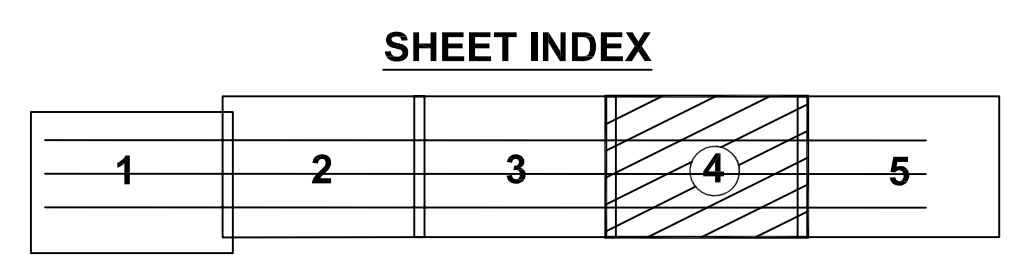
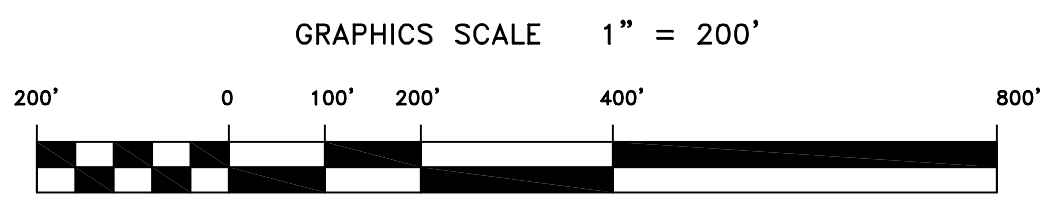
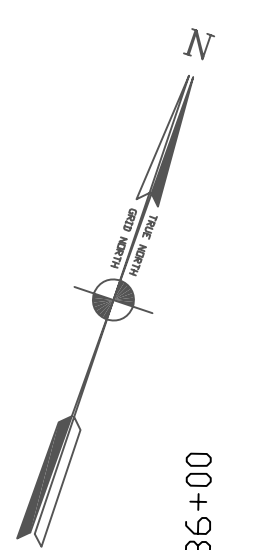


PRELIMINARY ISSUE  
THIS PLAN ISSUED FOR  
ADVANCE INFORMATION ONLY



US Army Corps  
of Engineers  
San Francisco District  
333 Market Street  
San Francisco, CA 94105


Mark	Description	Date	Appr.

SUBMITTED: Hydro Survey Team Leader	DESIGNED BY:	CHECKED BY:	DRAWN BY:
	DATE:	DATE:	DATE:
APPROVAL RECOMMENDED:	SHEET NO.	DRAWING NO.	DRAWING NO.
APPROVED:	4 OF 5	1	2
Chief, Technical Support Section	PREPARED UNDER THE DIRECTION OF		
Chief, Construction Branch	CRAIG W. KILLEY		
	LT. COLONEL, C.E., DISTRICT ENGINEER		

SAN FRANCISCO BAR  
SAN FRANCISCO MAINSHIP CHANNEL  
POSTREDGE SURVEY  
12 & 13 JUNE 2007

Sheet  
reference  
number  
**C4**