

PRELIMINARY ISSUE  
THIS PLAN ISSUED FOR  
ADVANCE INFORMATION ONLY

**NOTES:**

DRAWINGS NOT TO BE USED AS NAVIGATION. ONLY CHANNEL CONDITION AT DATE OF SURVEY. THE LOCATION OF ALL NAVIGATION AIDS ARE BASED ON INFORMATION PROVIDED BY THE U.S. COAST GUARD. BUOY LOCATIONS REPRESENT THE POSITION OF THE SINKER ONLY.

SURVEYED BY THE CORPS OF ENGINEERS.

SOUNDINGS ARE TAKEN BY FATHOMETER AND ARE SHOWN TO THE NEAREST FOOT AND TENTHS OF A FOOT.

SOUNDINGS ARE BASED ON THE DATUM OF MEAN LOWER LOW WATER AT THE LOCALITY. NGVD 1929.

PLANE GRID AND COORDINATES ARE BASED ON LAMBERT PROJECTION, ZONE III NAD83, CALIFORNIA, AS DESCRIBED IN SPECIAL PUBLICATION NO. 235, PUBLISHED BY THE NATIONAL OCEAN SURVEY.

THE PROJECT DEPTH IS 55 FEET AT M.L.L.W.

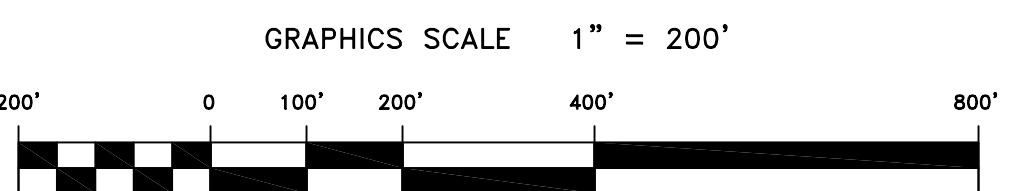
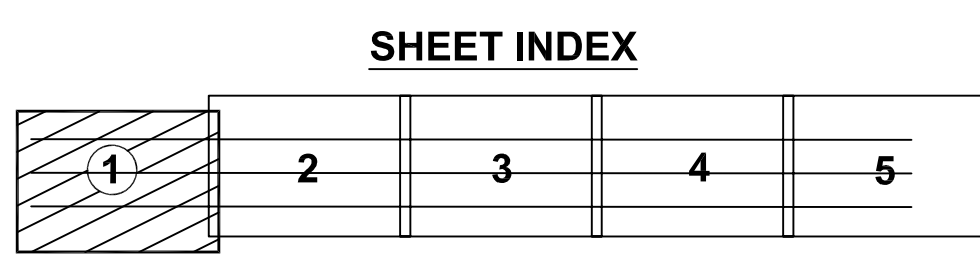
SOUNDINGS ARE BASED TIDE GAUGE LOCATED AT THE HYDE STREET PIER, SAN FRANCISCO, CALIFORNIA.

VERTICAL CONTROL  
BENCHMARK "O-461" USC&GS DISK ELEV. 19.54 FT. M.L.L.W.

HORIZONTAL CONTROL  
COAST GUARD D-BEACON.

CHANNEL ANGLE POINTS - NAD 83		
CHANNEL ∟	EAST	NORTH
A	5942376.6491	2108540.1149
B	5943012.7491	2106643.9149
C	5967229.2491	2116876.3149
D	5967865.3491	2114980.1149

CENTERLINE ANGLE POINTS - NAD 83		
CENTERLINE ∟	EAST	NORTH
C1	5942694.6491	2107592.0149
C2	5967547.2491	2115928.2149



US Army Corps of Engineers  
San Francisco District  
333 Market Street  
San Francisco, CA 94105

San Francisco Bar

CALIFORNIA

SAN FRANCISCO MAINSHIP CHANNEL  
POSTDRIDGE SURVEY  
24 & 25 JULY 2007

DESIGNED BY: TWV

DATE: 8/7/2007

APPROVAL RECOMMENDED: CHIEF, Technical Support Section

APPROVED: CRAIG W. KILEY  
LT. COLONEL, C.E., DISTRICT ENGINEER

CHECKED BY: TWV

SHEET NO. 1 OF 5

DRAWING NO. 2 697

PREPARED UNDER THE DIRECTION OF: CRAIG W. KILEY  
LT. COLONEL, C.E., DISTRICT ENGINEER

Mark	Description	Date	Appr.

SHEET reference number

**C1**