

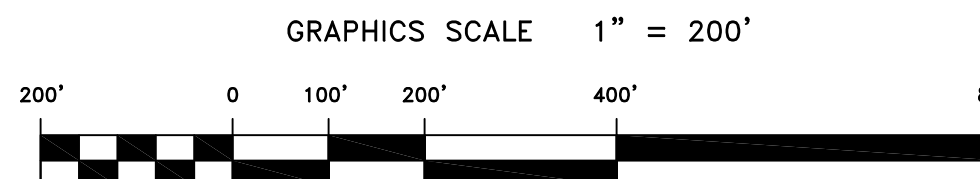
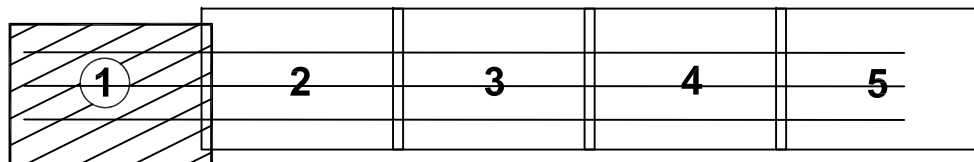
PRELIMINARY ISSUE
THIS PLAN ISSUED FOR
ADVANCE INFORMATION ONLY

NOTES:
DRAWINGS NOT TO BE USED AS NAVIGATION. ONLY CHANNEL CONDITION AT DATE OF SURVEY. THE LOCATION OF ALL NAVIGATION AIDS ARE BASED ON INFORMATION PROVIDED BY THE U.S. COAST GUARD. BUOY LOCATIONS REPRESENT THE POSITION OF THE SINKER ONLY.
SURVEYED BY THE CORPS OF ENGINEERS.
SOUNDINGS ARE TAKEN BY FATHOMETER AND ARE SHOWN TO THE NEAREST FOOT AND TENTHS OF A FOOT.
SOUNDINGS ARE BASED ON THE DATUM OF MEAN LOWER LOW WATER AT THE LOCALITY. NAVD 88.
PLANE GRID AND COORDINATES ARE BASED ON LAMBERT PROJECTION, ZONE III NAD83, CALIFORNIA, AS DESCRIBED IN SPECIAL PUBLICATION NO. 235, PUBLISHED BY THE NATIONAL OCEAN SURVEY.
THE PROJECT DEPTH IS 55 FEET AT M.L.L.W.
SOUNDINGS ARE BASED TIDE GAUGE LOCATED AT THE HYDE STREET PIER, SAN FRANCISCO, CALIFORNIA.
VERTICAL CONTROL
BENCHMARK "Q-481" USC&GS DISK ELEV. 19.54 FT. M.L.L.W.
HORIZONTAL CONTROL
COAST GUARD D-BEACON.

CHANNEL ANGLE POINTS - NAD 83		
CHANNEL ∠	EAST	NORTH
A	5942376.6491	2108540.1149
B	5943012.7491	2106643.9149
C	5967229.2491	2116876.3149
D	5967865.3491	2114980.1149

CENTERLINE ANGLE POINTS - NAD 83		
CENTERLINE ∠	EAST	NORTH
C1	5942694.6491	2107592.0149
C2	5967547.2491	2115928.2149

SHEET INDEX



US Army Corps
of Engineers
San Francisco District
1455 Market Street
San Francisco, CA 94103

Mark	Description	Date	Appr.

SUBMITTED:	DESIGNED BY:	CHECKED BY:	DRAWN BY:
PDT Hyde Survey Team Leader	PDT	PDT	PDT
APPROVAL RECOMMENDED:	DATE:	SHEET NO.:	DRAWING NO.:
Chaf. Geomatics Section	7/11/2012	1 OF 5	1 2
APPROVED:	PREPARED UNDER THE DIRECTION OF		
Chaf. Construction Branch	JOHN K. BAKER		
	LT. COLONEL, C.E., DISTRICT ENGINEER		

CALIFORNIA
SAN FRANCISCO BAR
SAN FRANCISCO MAINSHIP CHANNEL
CONDITION SURVEY
06 JULY 2012

Sheet
reference
number
C1

