

PRELIMINARY ISSUE
THIS PLAN ISSUED FOR
ADVANCE INFORMATION ONLY

NOTES:

DRAWINGS NOT TO BE USED AS NAVIGATION. ONLY CHANNEL CONDITION AT DATE OF SURVEY. THE LOCATION OF ALL NAVIGATION AIDS ARE BASED ON INFORMATION PROVIDED BY THE U.S. COAST GUARD. BUOY LOCATIONS REPRESENT THE POSITION OF THE SINKER ONLY.

SURVEYED BY THE CORPS OF ENGINEERS, 10 JULY 2010.

SOUNDINGS ARE TAKEN BY FATHOMETER AND ARE SHOWN TO THE NEAREST FOOT AND TENTHS OF A FOOT.

SOUNDINGS ARE BASED ON THE DATUM OF MEAN LOWER LOW WATER AT THE LOCALITY. NAVD 88.

PLANE GRID AND COORDINATES ARE BASED ON LAMBERT PROJECTION, ZONE III NAD83, CALIFORNIA, AS DESCRIBED IN SPECIAL PUBLICATION NO. 235, PUBLISHED BY THE NATIONAL OCEAN SURVEY.

THE PROJECT DEPTH IS 55 FEET AT M.L.L.W.

SOUNDINGS ARE BASED TIDE GAUGE LOCATED AT THE HYDE STREET PIER, SAN FRANCISCO, CALIFORNIA.

VERTICAL CONTROL
BENCHMARK "Q-481" USC&GS DISK ELEV. 19.54 FT. M.L.L.W.

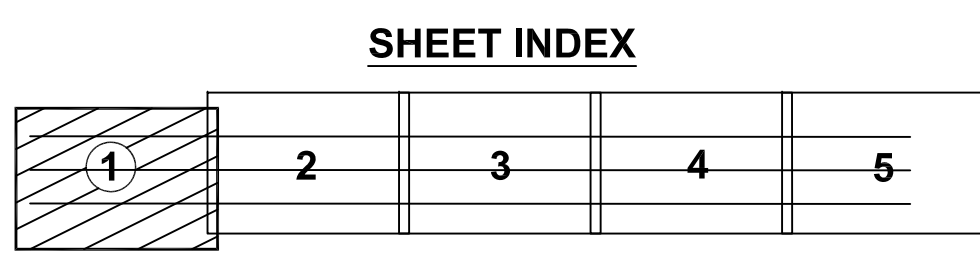
HORIZONTAL CONTROL
COAST GUARD D-BEACON.

CHANNEL ANGLE POINTS - NAD 83

CHANNEL ∠	EAST	NORTH
A	5942376.6491	2108540.1149
B	5943012.7491	2106643.9149
C	5967229.2491	2116876.3149
D	5967865.3491	2114980.1149

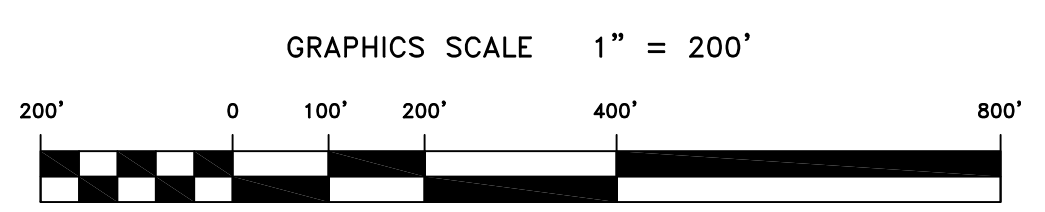
CENTERLINE ANGLE POINTS - NAD 83

CENTERLINE ∠	EAST	NORTH
C1	5942694.6491	2107592.0149
C2	5967547.2491	2115928.2149



LEGEND:

— (black line)	-55'
— (green line)	-54'
— (blue line)	-53'
— (cyan line)	-52'
— (red line)	-51'



US Army Corps
of Engineers
San Francisco District
1455 Market Street
San Francisco, CA 94103

Mark	Description	Date	Appr.

SUBMITTED:	DESIGNED BY:	CHECKED BY:	DRAWN BY:
PDT Hydro Survey Team Leader	PDT PDT	PDT PDT	PDT PDT
APPROVAL RECOMMENDED: STEPHEN P. KILMON, PSM Chief, Geomatics Section	DATE: 7/22/2010	SHEET NO. 1 OF 5	DRAWING NO. 2
APPROVED: TORREY A. DICIRO LT. COLONEL, C.E., DISTRICT ENGINEER	PREPARED UNDER THE DIRECTION OF TORREY A. DICIRO LT. COLONEL, C.E., DISTRICT ENGINEER		
Chief, Construction Branch			

CALIFORNIA
SAN FRANCISCO MAINSHIP CHANNEL
POSTREDGE SURVEY
10 JULY 2010

Sheet reference number
C1