

PRELIMINARY ISSUE  
THIS PLAN ISSUED FOR  
ADVANCE INFORMATION ONLY

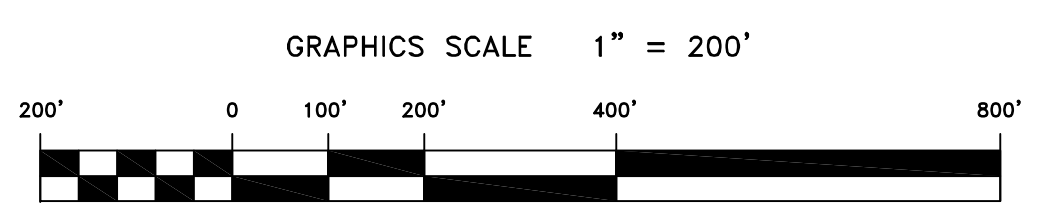
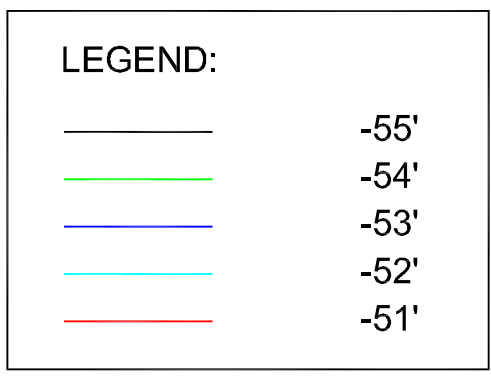
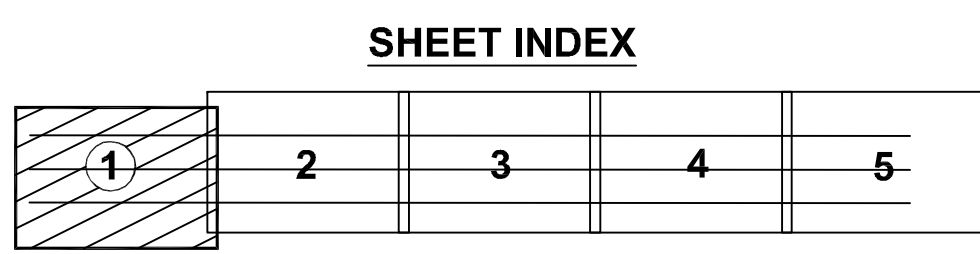
NOTES:  
DRAWINGS NOT TO BE USED AS NAVIGATION. ONLY CHANNEL CONDITION AT DATE OF SURVEY. THE LOCATION OF ALL NAVIGATION AIDS ARE BASED ON INFORMATION PROVIDED BY THE U.S. COAST GUARD. BUOY LOCATIONS REPRESENT THE POSITION OF THE SINKER ONLY.  
SURVEYED BY THE CORPS OF ENGINEERS  
SOUNDINGS ARE TAKEN BY FATHOMETER AND ARE SHOWN TO THE NEAREST FOOT AND TENTHS OF A FOOT.  
SOUNDINGS ARE BASED ON THE DATUM OF MEAN LOWER LOW WATER AT THE LOCALITY. NAVD 88.  
PLANE GRID AND COORDINATES ARE BASED ON LAMBERT PROJECTION, ZONE III NAD83, CALIFORNIA, AS DESCRIBED IN SPECIAL PUBLICATION NO. 235, PUBLISHED BY THE NATIONAL OCEAN SURVEY.  
THE PROJECT DEPTH IS 55 FEET AT M.L.L.W.  
SOUNDINGS ARE BASED TIDE GAUGE LOCATED AT THE HYDE STREET PIER, SAN FRANCISCO, CALIFORNIA.  
VERTICAL CONTROL  
BENCHMARK "Q-481" USC&GS DISK ELEV. 19.54' AT M.L.L.W.  
HORIZONTAL CONTROL  
COAST GUARD D-BEACON.

CHANNEL ANGLE POINTS - NAD 83

CHANNEL	EAST	NORTH
A	5942376.6491	2108540.1149
B	5943012.7491	2106643.9149
C	5967229.2491	2116876.3149
D	5967865.3491	2114980.1149

CENTERLINE ANGLE POINTS - NAD 83

CENTERLINE	EAST	NORTH
C1	5942694.6491	2107592.0149
C2	5967547.2491	2115928.2149



US Army Corps of Engineers  
San Francisco District  
1455 Market Street  
San Francisco, CA 94103

Mark	Description	Date	Appr.

SUBMITTED: PDT  
Hydro Survey Team Leader  
APPROVAL RECOMMENDED: 5/4/2011 1 OF 5 1 2 XXX  
CHG. Geographic Section  
APPROVED: TORREY A. DICIRO  
LT. COLONEL, C.E., DISTRICT ENGINEER

DESIGNED BY: PDT  
CHECKED BY: PDT  
DATE: 5/4/2011  
DRAWING NO. 1 OF 5 1 2 XXX

PREPARED UNDER THE DIRECTION OF  
TORREY A. DICIRO  
LT. COLONEL, C.E., DISTRICT ENGINEER

CALIFORNIA  
SAN FRANCISCO MAINSHIP CHANNEL  
CONDITION SURVEY  
27 April & 2-3 May 2011

Sheet reference number  
C1