

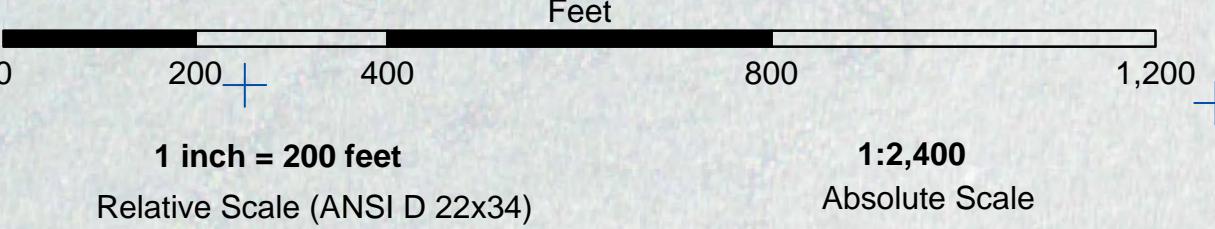
NAD 83 CHANNEL ANGLE POINTS		
PT	X	Y
1	6070497.14	2029381.41
2	6070532.34	2028732.31
3	6070951.24	2020996.01
4	6070270.24	2019491.41
5	6067215.84	2018664.81
6	6068677.34	2015527.11
7	6068847.04	2015077.21
8	6068598.34	2014551.71
9	6065434.54	2013609.41
10	6065101.54	2012395.71
11	6065181.74	2011949.61
12	6064761.54	2010998.31
13	6064484.54	2010776.31
14	6064278.74	2010735.31
15	6064211.54	2011072.31
16	6063974.74	2011444.51
17	6064312.34	2012208.81
18	6064715.84	2012501.51
19	6065082.74	2013339.31
20	6065866.34	2015167.71
21	6068300.74	2015432.81
22	6069969.44	2016845.51
23	6069927.44	2019582.91
24	6070573.54	2021010.41
25	6070628.34	2021447.71
26	6070366.54	2028244.71
27	6069732.74	2028609.11
28	6069564.44	2029236.91

NAD 83 CENTERLINE ANGLE POINTS		
PT	X	Y
C1	6070030.84	2029309.11
C2	6070516.34	2026252.81
C3	6070776.14	2021455.81
C4	6070762.44	2021003.21
C5	6070098.84	2019537.11
C6	6067092.64	2018755.11
C7	6066541.74	2015591.31
C8	6066573.94	2015255.01
C9	6065258.84	2013724.31
C10	6064908.74	2012448.61
C11	6064278.74	2010735.31

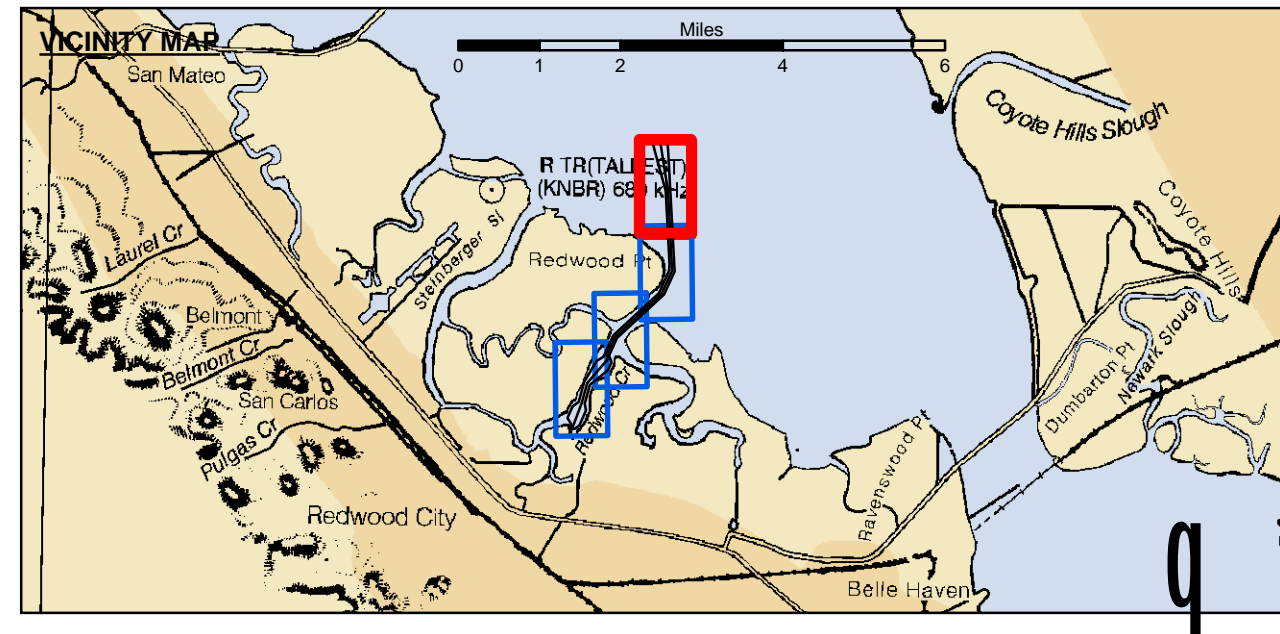


DISCLAIMER
 The United States Government furnishes this information for the general public and does not warrant, express or implied, the accuracy, completeness, or reliability of the information. The user is responsible for the results of any application of the data for other than its intended purpose. The United States Government makes no warranty, express or implied, concerning the accuracy, completeness, or reliability of the information. The user is responsible for the results of any application of the data for other than its intended purpose. These data belong to the Government. Therefore, the recipient may not transfer these data to others without also transferring the Disclaimer.

PRELIMINARY ISSUE
 THIS PLAN ISSUED FOR
 ADVANCE INFORMATION ONLY



P
 FLOOD a
 b
 EBB



- Federal Navigation Channel
 - Shoaling Area
 - Material Placement Area
 - Anchorage Area
 - Wreck Area
 - Submerged Wreck
 - Angle Point
 - Beacon, General
 - Obstruction Point
 - Navigation Buoy
 - Navigation Buoy
 - Shoalest Sounding*
- Contours**
- 30
 - 29
 - 28
 - 27
 - 26

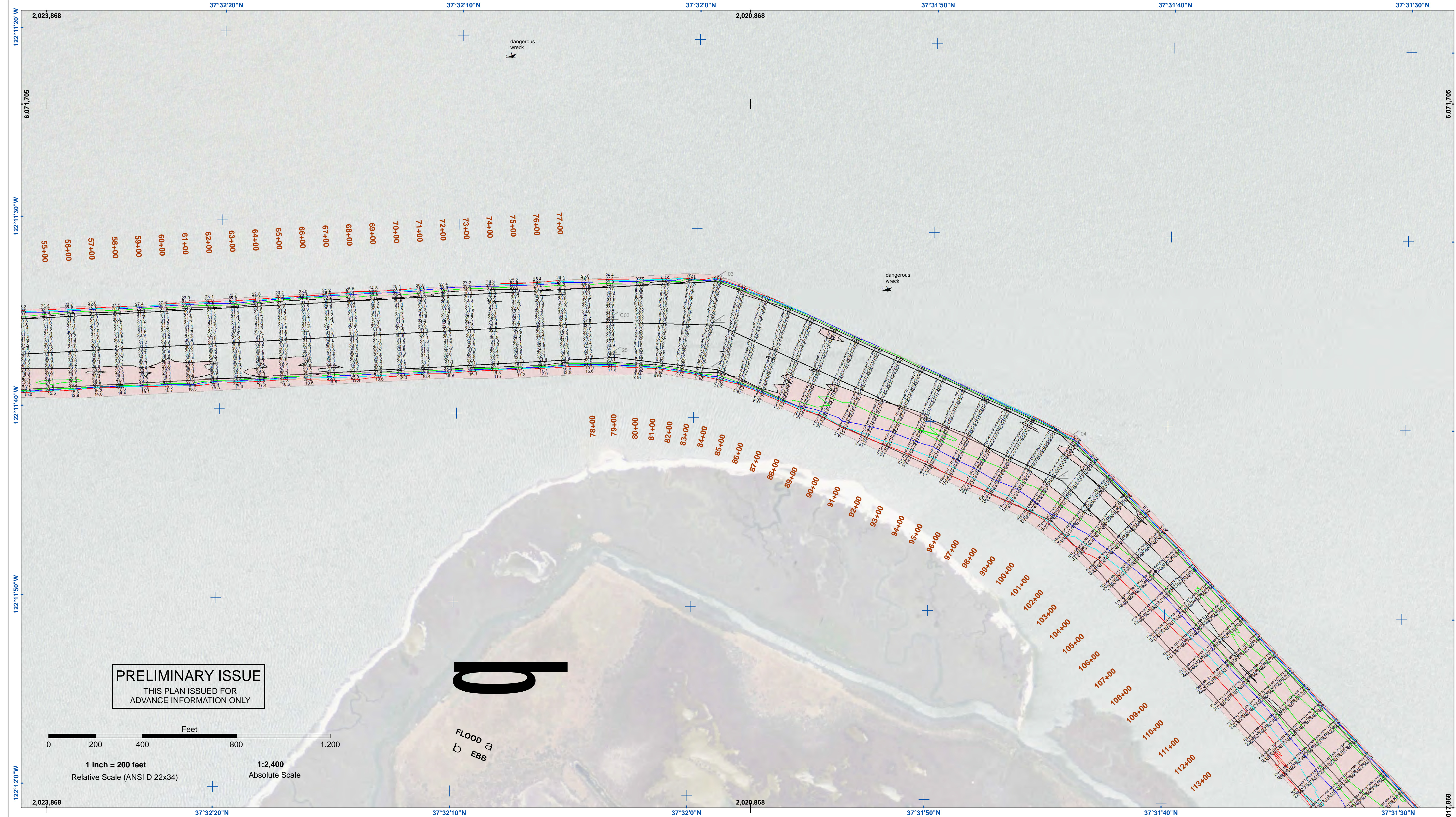
NOTES:
 DRAWING NOT TO BE USED FOR NAVIGATION. ONLY CHANNEL CONDITION AT DATE OF SURVEY.
 THE LOCATION OF ALL NAVIGATION AIDS ARE BASED ON INFORMATION PROVIDED BY THE U.S. COAST GUARD. BUOY LOCATIONS REPRESENT THE POSITION OF THE SINKER ONLY.
 INFORMATION DEPICTED ON THIS MAP REPRESENTS THE RESULTS OF SURVEYS MADE ON THE DATES INDICATED AND CAN ONLY BE CONSIDERED AS INDICATING THE GENERAL CONDITIONS AT THAT TIME.
 SURVEYED BY THE CORPS OF ENGINEERS.
 *SHOALEST SOUNDING PER QUARTER PER REACH

SOUNDINGS WERE TAKEN BY FATHOMETER AND ARE SHOWN TO THE NEAREST TENTH OF A FOOT. SOUNDINGS ARE BASED ON THE DATUM OF MEAN LOWER LOW WATER AT THE LOCALITY, NAVD 88. BASE MAPS ARE USDA NAIP 2010.
 PLANE GRID, BEARING AND COORDINATES ARE BASED ON THE STATE OF CALIFORNIA COORDINATE SYSTEM, LAMBERT CONFORMAL PROJECTION, ZONE III NAD 83, CALIFORNIA, AS DESCRIBED IN SPECIAL PUBLICATION NO. 235, PUBLISHED BY NATIONAL OCEAN SURVEY.
 THE PROJECT DEPTH IS 30 FEET AT M.L.L.W.
 SOUNDINGS ARE BASED ON THE TIDE GAUGE LOCATED AT RAZ 6 & RAZ 5
 LINES 18+00 TO 100+00 @ BEACON NO. 8
 LINES 101+00 TO 160+00 @ RAZ 6
 LINES 160+ TO 208+49 @ RAZ 5
 VERTICAL CONTROL:
 BENCHMARK, MLLW ELEV., AGENCY
 BM 4501 A, NOS TIDAL DISK, 12.15 MLLW
 BM 4508 U 1998, NOS TIDAL DISK, 11.88 MLLW
 BM 13 1974, NOS TIDAL DISK, 12.99 MLLW
 HORIZONTAL CONTROL:
 DESIGNATION, SOURCE, XYZ
 COAST GUARD D-BEACON.

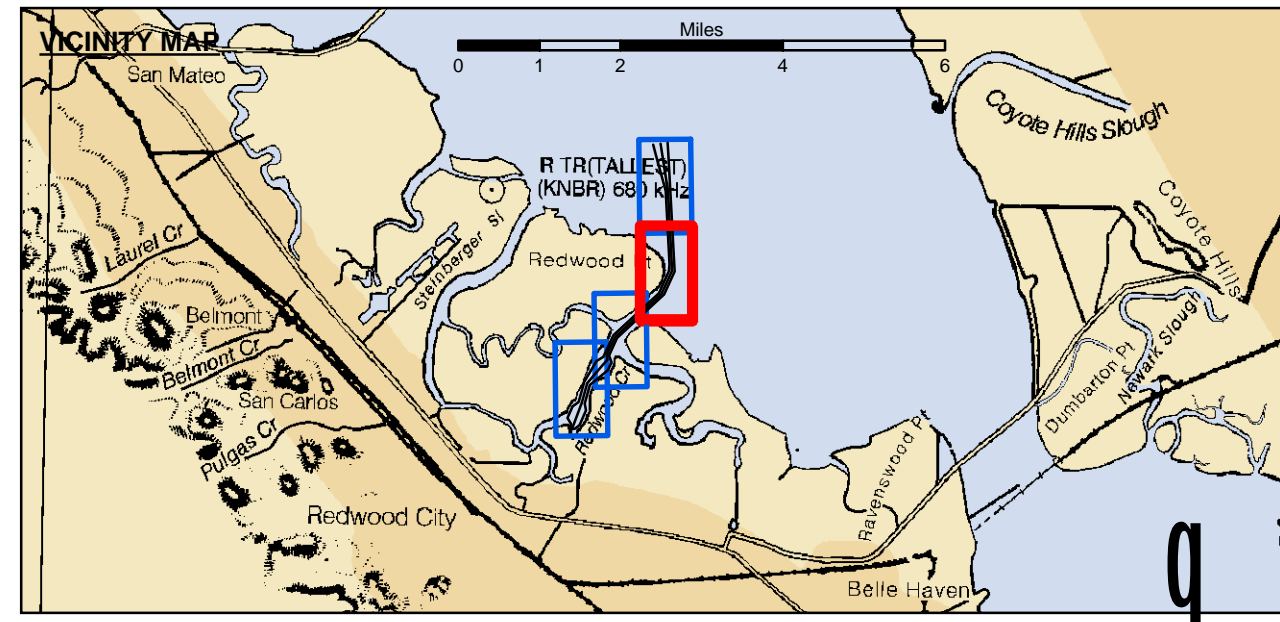
Prepared Under the Direction of JOHN C. MORROW LT COLONEL, C.E., DISTRICT ENGINEER	Surveyed By: PDT	Chart Date: Jul 26, 2016
Submitted: Hydro Survey Team Leader	Plotted By: PDT	Designed by: PDT
Recommended: Chief, Hydro Survey Section	Checked By: PDT	Drawn by: PDT
Approved: Chief, Construction Branch		

SAN MATEO COUNTY
REWOOD CITY
 CONDITION SURVEY
 20 July 2016

Sheet Reference Number
 1 of 4



DISCLAIMER
The United States Government furnishes this information for the purpose of providing accurate and reliable data for the use of the user. The user is responsible for the results of any application of the data for other than its intended purpose. The United States Government makes no warranty, expressed or implied, concerning the accuracy, completeness, or reliability of the information furnished. The user shall assume the responsibility for the use of the information. The user shall not transfer these data to others without also transferring this disclaimer.



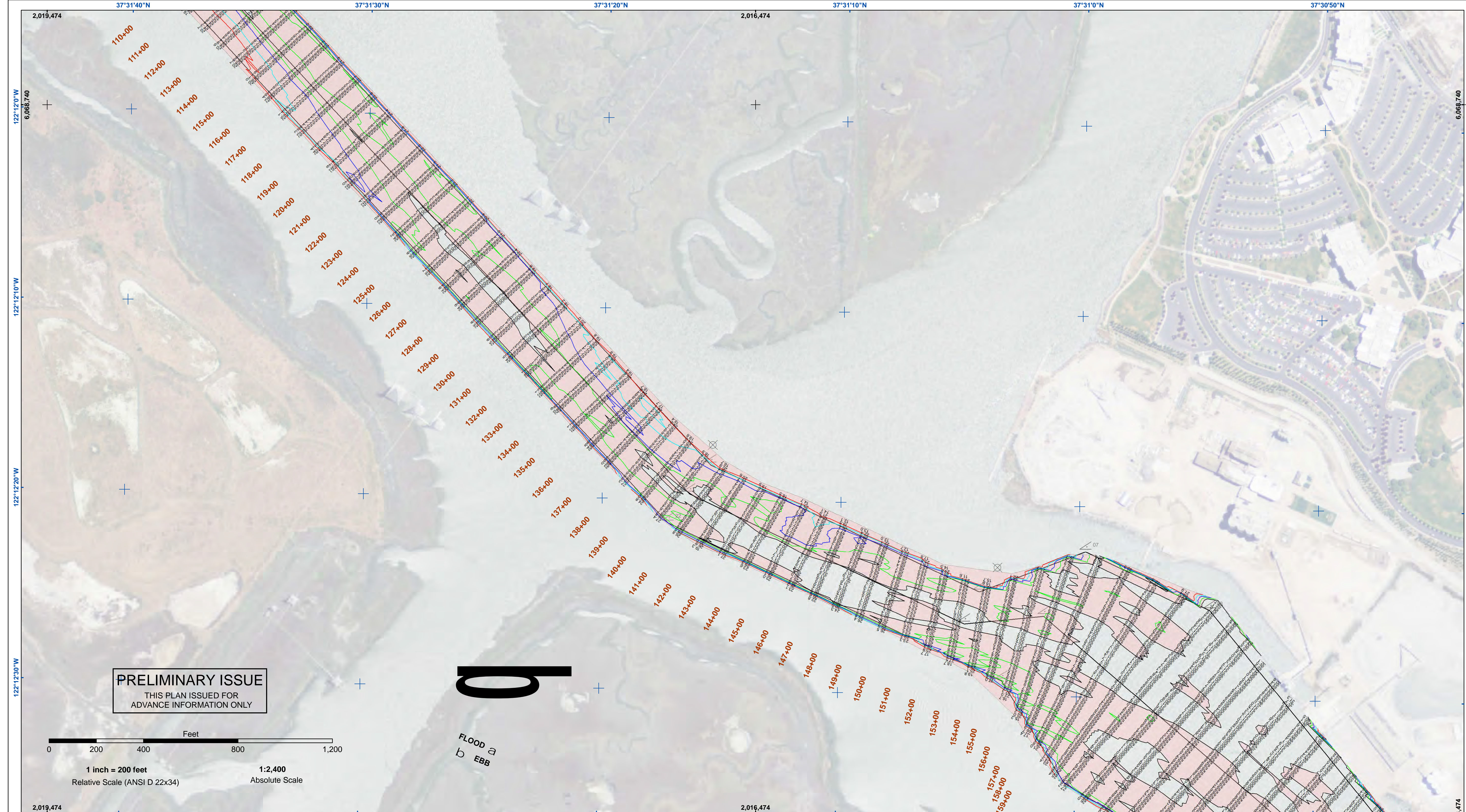
	Federal Navigation Channel		Beacon, General	Contours		-30
	Shoaling Area		Obstruction Point			-29
	Material Placement Area		Navigation Buoy			-28
	Anchorage Area		Navigation Buoy			-27
	Wreck Area		Shoalest Sounding*			-26
	Submerged Wreck					
	Angle Point					

NOTES:
DRAWING NOT TO BE USED FOR NAVIGATION. ONLY CHANNEL CONDITION AT DATE OF SURVEY.
THE LOCATION OF ALL NAVIGATION AIDS ARE BASED ON INFORMATION PROVIDED BY THE U.S. COAST GUARD. BUOY LOCATIONS REPRESENT THE POSITION OF THE SINKER ONLY.
INFORMATION DEPICTED ON THIS MAP REPRESENTS THE RESULTS OF SURVEYS MADE ON THE DATES INDICATED AND CAN ONLY BE CONSIDERED AS INDICATING THE GENERAL CONDITIONS AT THAT TIME.
SURVEYED BY THE CORPS OF ENGINEERS.
*SHOALEST SOUNDING PER QUARTER PER REACH

SOUNDINGS WERE TAKEN BY FATHOMETER AND ARE SHOWN TO THE NEAREST TENTH OF A FOOT. SOUNDINGS ARE BASED ON THE DATUM OF MEAN LOWER LOW WATER AT THE LOCALITY, NAVD 88. BASE MAPS ARE USDA NAIP 2010.
PLANE GRID, BEARING AND COORDINATES ARE BASED ON THE STATE OF CALIFORNIA COORDINATE SYSTEM, LAMBERT CONFORMAL PROJECTION, ZONE III NAD 83, CALIFORNIA, AS DESCRIBED IN SPECIAL PUBLICATION NO. 235, PUBLISHED BY NATIONAL OCEAN SURVEY.
THE PROJECT DEPTH IS 30 FEET AT M.L.L.W.
SOUNDINGS ARE BASED ON THE TIDE GAUGE LOCATED AT RAZ 6 & RAZ 5
LINES 18+00 TO 100+00 @ BEACON NO. 8
LINES 101+00 TO 160+00 @ RAZ 6
LINES 160+ TO 208+49 @ RAZ 5
VERTICAL CONTROL:
BENCHMARK, MLLW ELEV., AGENCY
BM 4501 A, NOS TIDAL DISK, 12.15 MLLW
BM 4508 U 1998, NOS TIDAL DISK, 11.88 MLLW
BM 13 1974, NOS TIDAL DISK, 12.99 MLLW
HORIZONTAL CONTROL:
DESIGNATION, SOURCE, XYZ
COAST GUARD D-BEACON.

SAN MATEO COUNTY
REWOOD CITY
CONDITION SURVEY
20 July 2016

Sheet Reference Number
2 of 4

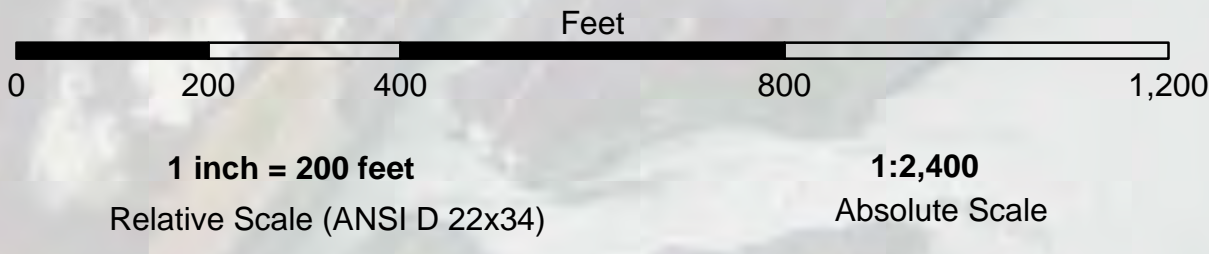


US Army Corps of Engineers
 San Francisco District
 1455 Market Street
 San Francisco, CA 94103

DISCLAIMER
 The United States Government furnishes this information as a service to the public and does not warrant, express or implied, the accuracy, completeness, or reliability of the information. The user is responsible for the results of any application of the data for other than its intended purpose. These data belong to the Government. Therefore, the recipient may not transfer these data to others without also transferring this disclaimer.

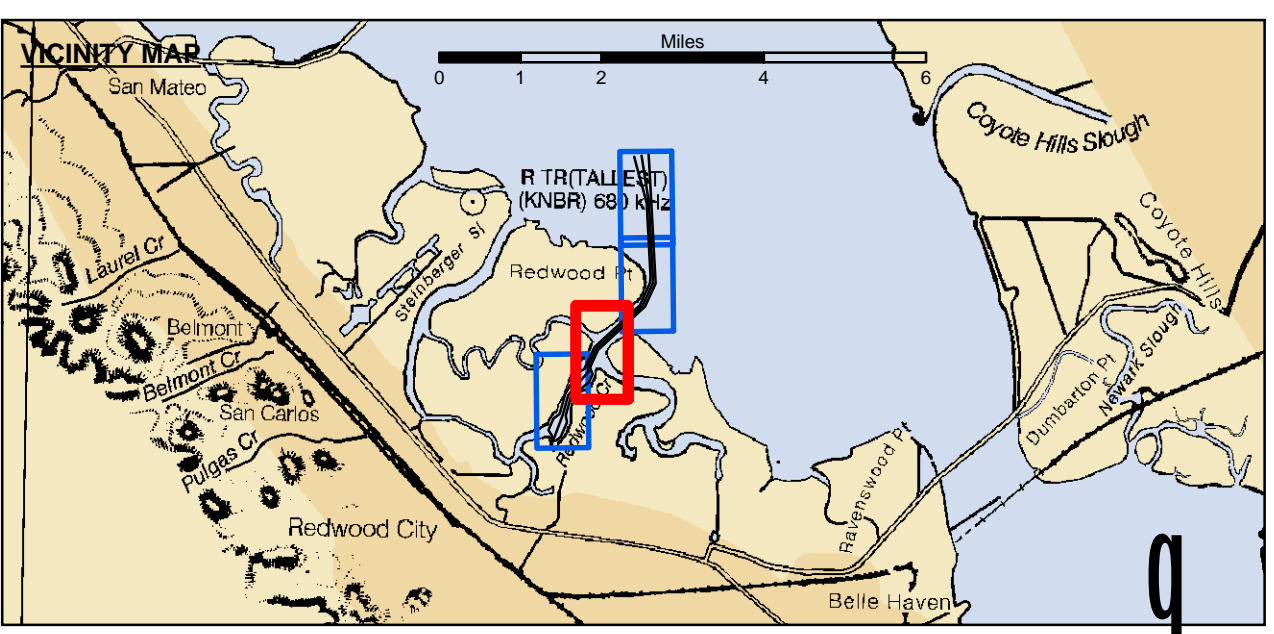
Prepared Under the Direction of	JOHN C. MORROW	Chart Date	Jul 26, 2016
Surveys By	LT COLONEL, C.E. DISTRICT ENGINEER	Designed by	PDT
Subplot	Hydro Survey Team Leader	Plotted by	PDT
Recommended	Chief, Hydro Survey Section	Checked by	PDT
Approved	Chief, Construction Branch	Drawn by	PDT

PRELIMINARY ISSUE
 THIS PLAN ISSUED FOR
 ADVANCE INFORMATION ONLY



b

FLOOD a
 EBB



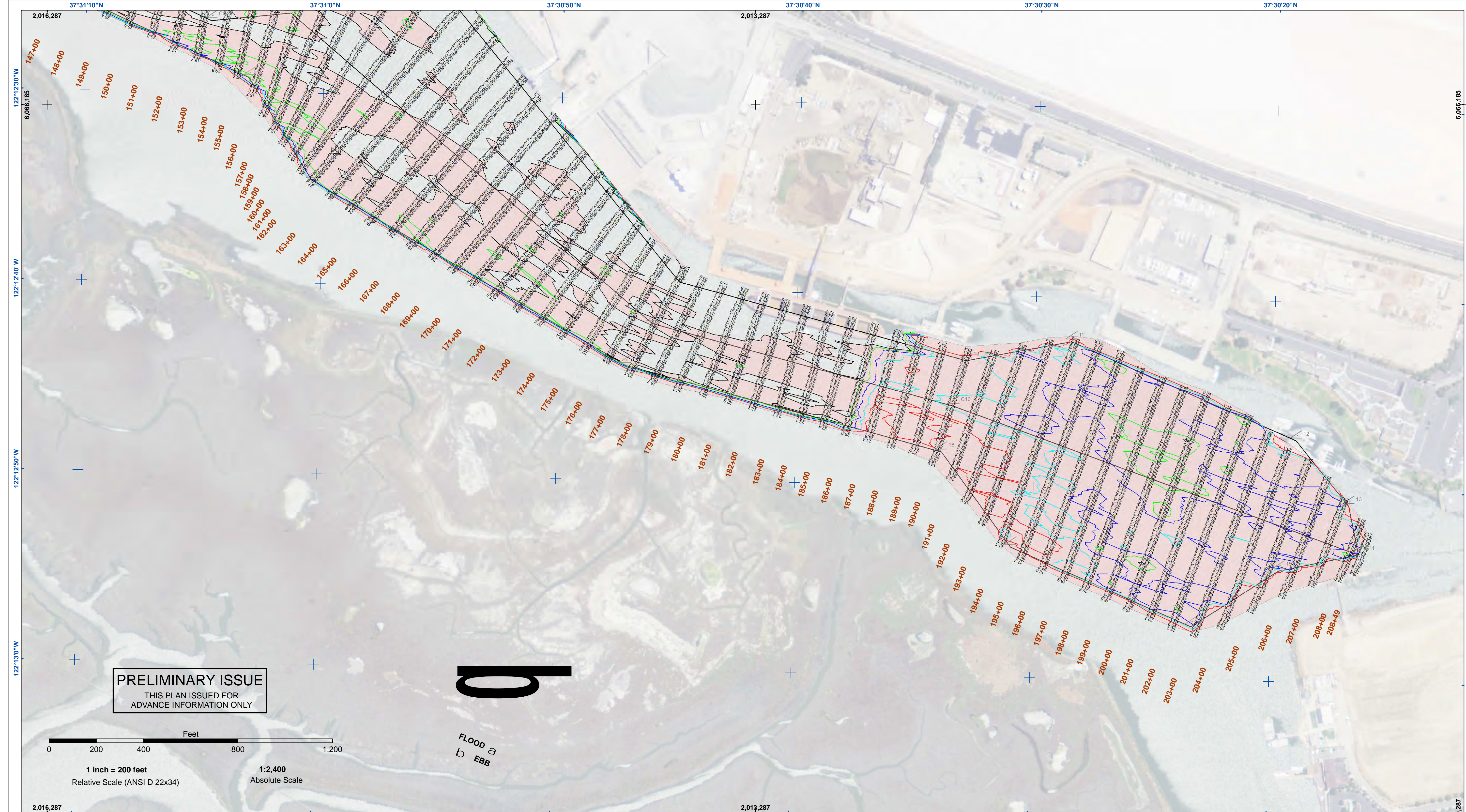
- | | | | | | |
|--|----------------------------|--|--------------------|-----------------|-----|
| | Federal Navigation Channel | | Beacon, General | Contours | |
| | Shoaling Area | | Obstruction Point | | -30 |
| | Material Placement Area | | Navigation Buoy | | -29 |
| | Anchorage Area | | Navigation Buoy | | -28 |
| | Wreck Area | | Navigation Buoy | | -27 |
| | Submerged Wreck | | Shoalest Sounding* | | -26 |
| | Angle Point | | | | |

NOTES:
 DRAWING NOT TO BE USED FOR NAVIGATION. ONLY CHANNEL CONDITION AT DATE OF SURVEY.
 THE LOCATION OF ALL NAVIGATION AIDS ARE BASED ON INFORMATION PROVIDED BY THE U.S. COAST GUARD. BUOY LOCATIONS REPRESENT THE POSITION OF THE SINKER ONLY.
 INFORMATION DEPICTED ON THIS MAP REPRESENTS THE RESULTS OF SURVEYS MADE ON THE DATES INDICATED AND CAN ONLY BE CONSIDERED AS INDICATING THE GENERAL CONDITIONS AT THAT TIME.
 SURVEYED BY THE CORPS OF ENGINEERS.
 *SHOALEST SOUNDING PER QUARTER PER REACH

SOUNDINGS WERE TAKEN BY FATHOMETER AND ARE SHOWN TO THE NEAREST TENTH OF A FOOT. SOUNDINGS ARE BASED ON THE DATUM OF MEAN LOWER LOW WATER AT THE LOCALITY, NAVD 88. BASE MAPS ARE USDA NAIP 2010.
 PLANE GRID, BEARING AND COORDINATES ARE BASED ON THE STATE OF CALIFORNIA COORDINATE SYSTEM, LAMBERT CONFORMAL PROJECTION, ZONE III NAD 83, CALIFORNIA, AS DESCRIBED IN SPECIAL PUBLICATION NO. 235, PUBLISHED BY NATIONAL OCEAN SURVEY.
 THE PROJECT DEPTH IS 30 FEET AT M.L.L.W.
 SOUNDINGS ARE BASED ON THE TIDE GAUGE LOCATED AT RAZ 6 & RAZ 5
 LINES 18+00 TO 100+00 @ BEACON NO. 8
 LINES 101+00 TO 160+00 @ RAZ 6
 LINES 160+ TO 208+49 @ RAZ 5
 VERTICAL CONTROL:
 BENCHMARK, MLLW ELEV., AGENCY
 BM 4501 A, NOS TIDAL DISK, 12.15 MLLW
 BM 4508 U 1998, NOS TIDAL DISK, 11.88 MLLW
 BM 13 1974, NOS TIDAL DISK, 12.99 MLLW
 HORIZONTAL CONTROL:
 DESIGNATION, SOURCE, XYZ
 COAST GUARD D-BEACON.

SAN MATEO COUNTY
REWOOD CITY
 CONDITION SURVEY
 20 July 2016

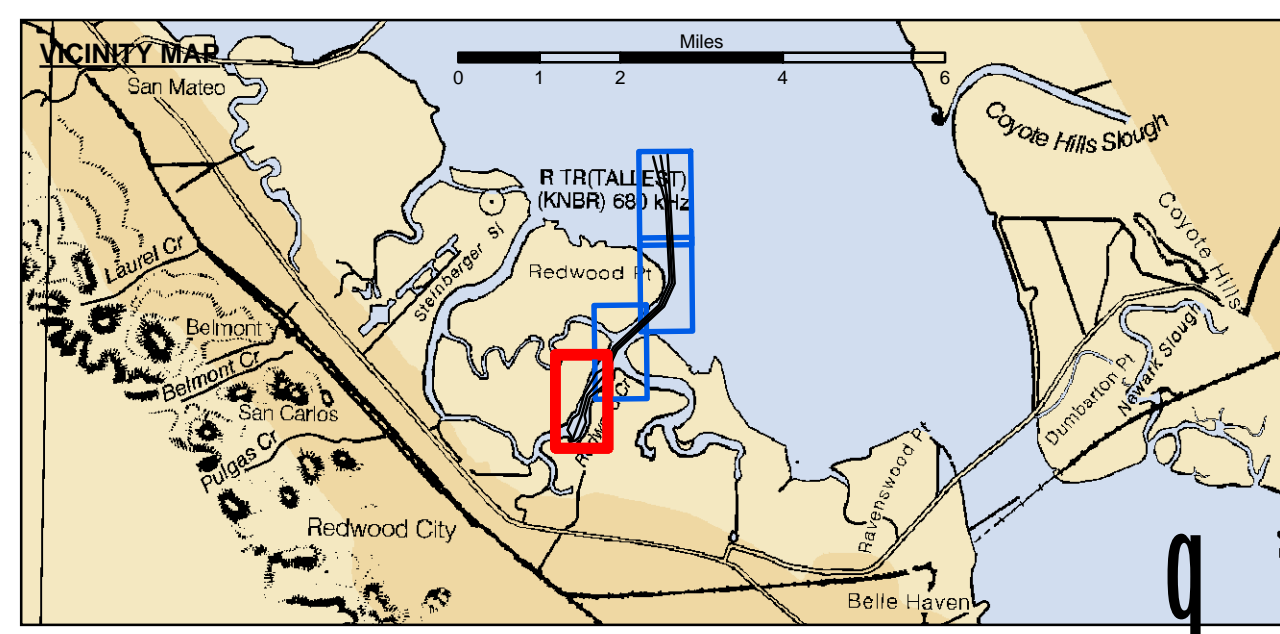
Sheet Reference Number
 3 of 4



PRELIMINARY ISSUE
THIS PLAN ISSUED FOR
ADVANCE INFORMATION ONLY



FLOOD a
EBB b



	Federal Navigation Channel		Beacon, General	Contours	
	Shoaling Area		Obstruction Point		
	Material Placement Area		Navigation Buoy		
	Anchorage Area		Navigation Buoy		
	Wreck Area		Shoalest Sounding*		
	Submerged Wreck				-30
	Angle Point				-29
					-28
					-27
					-26

NOTES:
DRAWING NOT TO BE USED FOR NAVIGATION. ONLY CHANNEL CONDITION AT DATE OF SURVEY.
SOUNDINGS ARE BASED ON THE DATUM OF MEAN LOWER LOW WATER AT THE LOCALITY, NAVD 88.
BASE MAPS ARE USDA NAIP 2010.
INFORMATION DEPICTED ON THIS MAP REPRESENTS THE RESULTS OF SURVEYS
MADE ON THE DATES INDICATED AND CAN ONLY BE CONSIDERED AS INDICATING
THE GENERAL CONDITIONS AT THAT TIME.
SURVEYED BY THE CORPS OF ENGINEERS.
*SHOALEST SOUNDING PER QUARTER PER REACH

SOUNDINGS WERE TAKEN BY FATHOMETER AND ARE SHOWN TO THE NEAREST TENTH OF A FOOT.
SOUNDINGS ARE BASED ON THE DATUM OF MEAN LOWER LOW WATER AT THE LOCALITY, NAVD 88.
BASE MAPS ARE USDA NAIP 2010.
PLANE GRID, BEARING AND COORDINATES ARE BASED ON THE STATE OF CALIFORNIA COORDINATE SYSTEM,
LAMBERT CONFORMAL PROJECTION, ZONE III NAD 83,
CALIFORNIA, AS DESCRIBED IN SPECIAL PUBLICATION NO. 235, PUBLISHED BY NATIONAL OCEAN SURVEY.
THE PROJECT DEPTH IS 30 FEET AT M.L.L.W.
SOUNDINGS ARE BASED ON THE TIDE GAUGE LOCATED AT RAZ 6 & RAZ 5
LINES 101+00 TO 100+00 @ BEACON NO. 8
LINES 101+00 TO 160+00 @ RAZ 6
LINES 160+ TO 208+49 @ RAZ 5
VERTICAL CONTROL:
BENCHMARK, MLLW ELEV., AGENCY
BM 4501 A, NOS TIDAL DISK, 12.15 MLLW
BM 4500 U 1998, NOS TIDAL DISK, 11.68 MLLW
BM 13 1974, NOS TIDAL DISK, 12.99 MLLW
HORIZONTAL CONTROL:
DESIGNATION, SOURCE, XYZ
COAST GUARD D-BEACON.



DISCLAIMER: The United States Government furnishes this information as a service to the public and does not warrant, express or implied, the accuracy, completeness, or reliability of the information. The user is responsible for the results of any application of the data for other than its intended purpose. The United States Government shall not be liable for any damages, including reasonable attorneys' fees, arising from the use of this information, whether or not such damages were foreseeable. The recipient may not transfer these data to others without also transferring this disclaimer.

Prepared Under the Direction of	JOHN C. MORROW	Chart Date:	Jul 26, 2016
Surveyed By:	PDT	Designed by:	PDT
Plotted By:	PDT	Checked By:	PDT
Recommended by:	Chief, Hydro Survey Section	Drawn by:	PDT
Approved:	Chief, Construction Branch		PDT

SAN MATEO COUNTY
REWOOD CITY
CONDITION SURVEY
20 July 2016

Sheet Reference Number
4 of 4