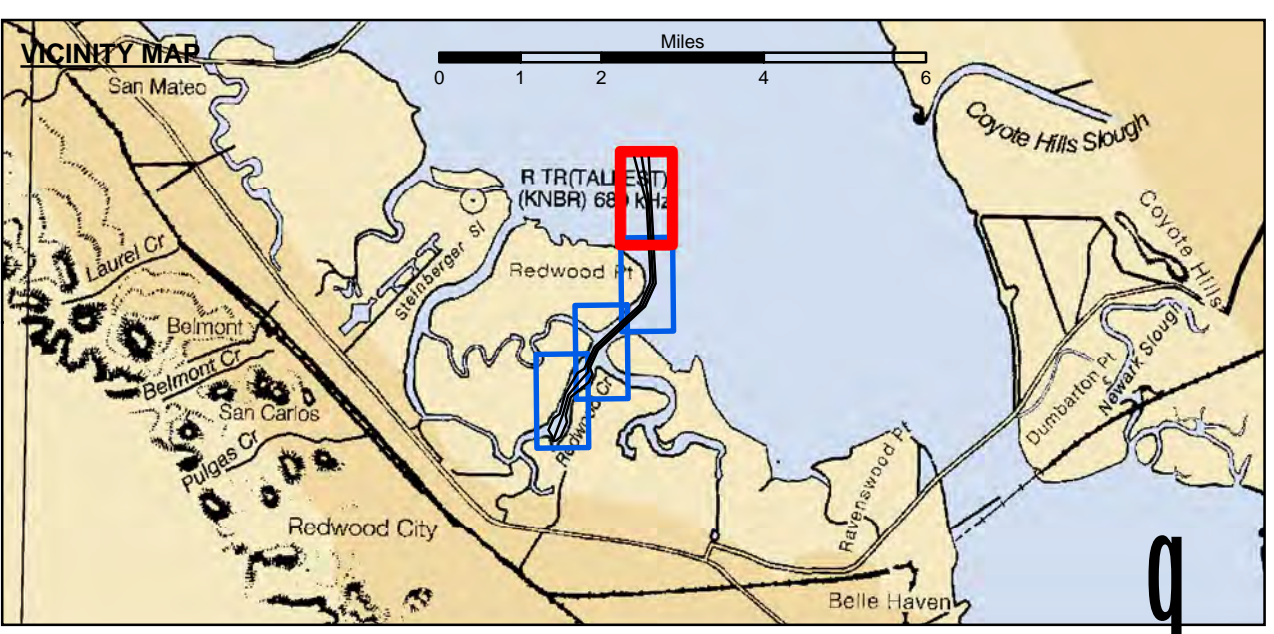
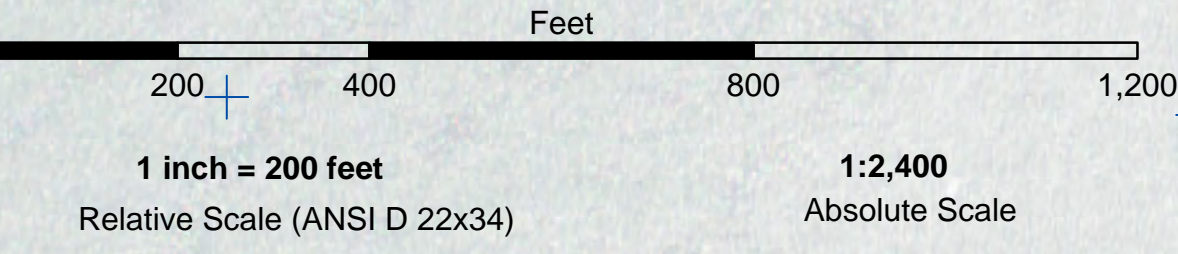


NAD 83 CHANNEL ANGLE POINTS		
PT	X	Y
1	6070497.14	2029381.41
2	6070532.34	2028732.31
3	6070951.24	2020996.01
4	6070270.24	2019491.41
5	6067215.84	2018664.81
6	6066677.34	2015527.11
7	6066847.04	2015077.21
8	6066538.34	2014551.71
9	6065434.54	2013609.41
10	6065101.54	2012395.71
11	6065181.74	2011949.61
12	6064761.54	2010998.31
13	6064484.54	2010776.31
14	6064278.74	2010735.31
15	6064211.54	2011072.31
16	6063974.74	2011444.51
17	6064312.34	2012208.81
18	6064715.84	2012501.51
19	6065082.74	2013339.31
20	6065866.34	2015167.71
21	6066300.74	2015432.81
22	6066969.44	2016845.51
23	6066927.44	2019582.91
24	6070573.54	2021010.41
25	6070628.34	2021447.71
26	6070366.54	2028244.71
27	6069732.74	2028609.11
28	6069564.44	2029236.91

NAD 83 CENTERLINE ANGLE POINTS		
PT	X	Y
C1	6070030.84	2029309.11
C2	6070516.34	2026252.81
C3	6070776.14	2021455.81
C4	6070762.44	2021003.21
C5	6070098.84	2019537.11
C6	6067092.64	2018755.11
C7	6066541.74	2015591.31
C8	6066573.94	2015255.01
C9	6065258.84	2013724.31
C10	6064908.74	2012448.61
C11	6064278.74	2010735.31



	Federal Navigation Channel		Beacon, General		Contours
	Shoaling Area		Obstruction Point		-29
	Material Placement Area		Navigation Buoy		-28
	Anchorage Area		Navigation Buoy		-27
	Wreck Area		Shoalest Sounding*		-26
	Submerged Wreck				
	Angle Point				

NOTES:
DRAWING NOT TO BE USED FOR NAVIGATION. ONLY CHANNEL CONDITION AT DATE OF SURVEY.
SOUNDINGS ARE BASED ON THE DATUM OF MEAN LOWER LOW WATER AT THE LOCALITY, NAVD 88.
BASE MAPS ARE USDA NAIP 2010.
INFORMATION DEPICTED ON THIS MAP REPRESENTS THE RESULTS OF SURVEYS MADE ON THE DATES INDICATED AND CAN ONLY BE CONSIDERED AS INDICATING THE GENERAL CONDITIONS AT THAT TIME.
SURVEYED BY THE CORPS OF ENGINEERS.
*SHOALEST SOUNDING PER QUARTER PER REACH

SOUNDINGS WERE TAKEN BY FATHOMETER AND ARE SHOWN TO THE NEAREST TENTH OF A FOOT.
PLANE GRID, BEARING AND COORDINATES ARE BASED ON THE STATE OF CALIFORNIA COORDINATE SYSTEM, LAMBERT CONFORMAL PROJECTION, ZONE III NAD 83, CALIFORNIA, AS DESCRIBED IN SPECIAL PUBLICATION NO. 235, PUBLISHED BY NATIONAL OCEAN SURVEY.
THE PROJECT DEPTH IS 30 FEET AT M.L.L.W.
SOUNDINGS ARE BASED ON THE TIDE GAUGE LOCATED AT RAZ 6 & RAZ 5
LINES 18+00 TO 100+00 @ BEACON NO. 8
LINES 101+00 TO 160+00 @ RAZ 6
LINES 160+ TO 208+49 @ RAZ 5
VERTICAL CONTROL:
BENCHMARK, MLLW ELEV., AGENCY
BM 4501 A, NOS TIDAL DISK, 12.15 MLLW
BM 4508 U 1998, NOS TIDAL DISK, 11.88 MLLW
BM 13 1974, NOS TIDAL DISK, 12.99 MLLW
HORIZONTAL CONTROL:
DESIGNATION, SOURCE, XYZ
COAST GUARD D-BEACON.

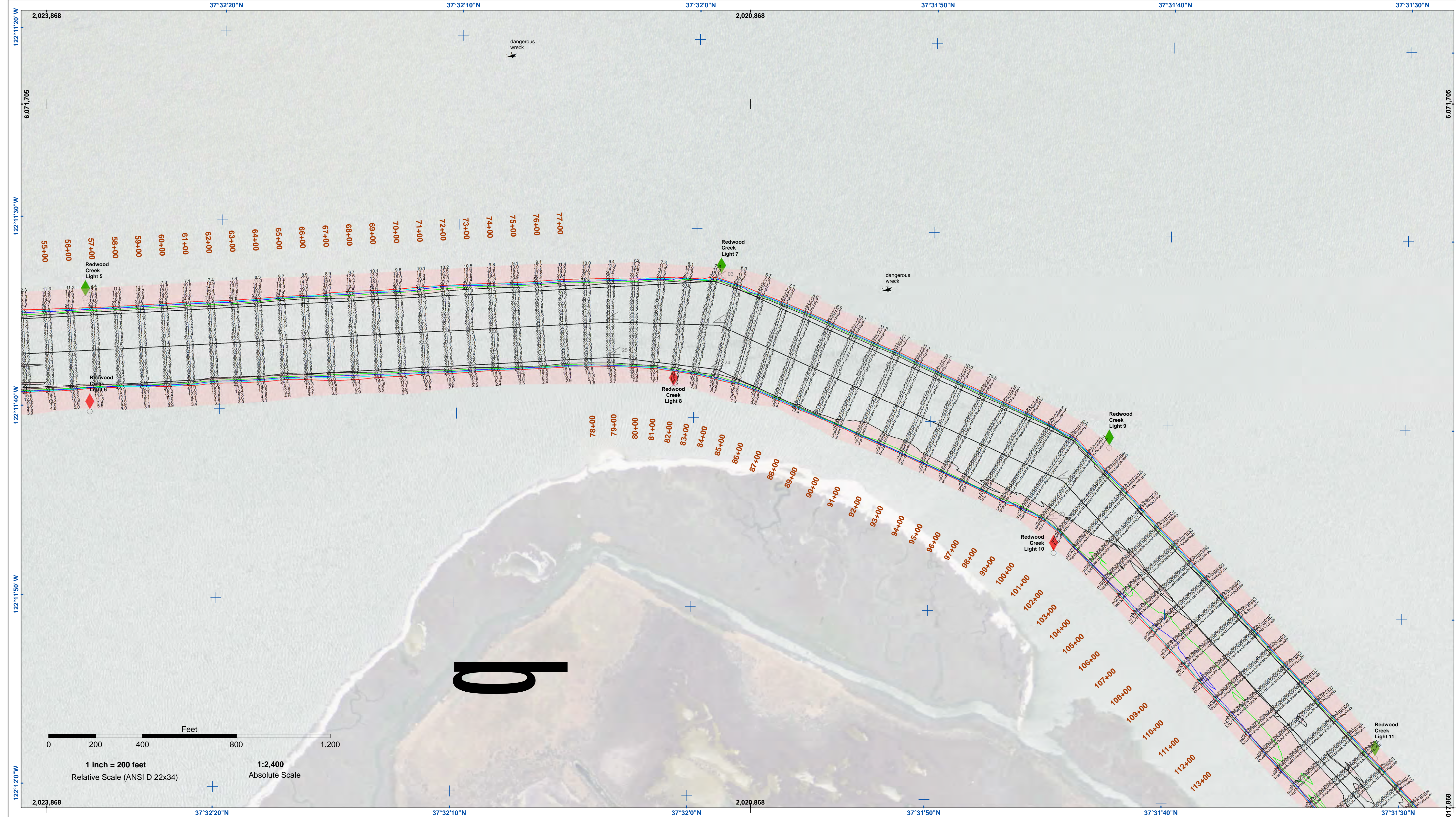
US Army Corps of Engineers
San Francisco District
1455 Market Street
San Francisco, CA 94103

DISCLAIMER: The United States Government furnishes this information as a public service. It is not intended to be used for navigation. The data represents the results of data collected by the United States Government. The United States Government makes no warranty, expressed or implied, concerning the accuracy, completeness, or reliability of this information. The user is responsible for the results of any application of this data for other than its intended purpose. The recipient may not transfer these data to others without also transferring this disclaimer.

Prepared Under the Direction of JOHN C. MORROW LT COLONEL, C.E., DISTRICT ENGINEER	Surveyed By:	Chart Date:
Subproject: Hydro Survey, Team Leader	Plotted By:	Apr 26, 2017
Recommended: Chief, Hydro Survey Section	Checked By:	Designed by:
Approved: Chief, Construction Branch	PDT	Drawn by:
	PDT	PDT

CALIFORNIA
SAN MATEO COUNTY
REWOOD CITY HARBOR
PRE-SOLICITATION SURVEY
21-24 APRIL 2017

Sheet Reference Number
1 of 4



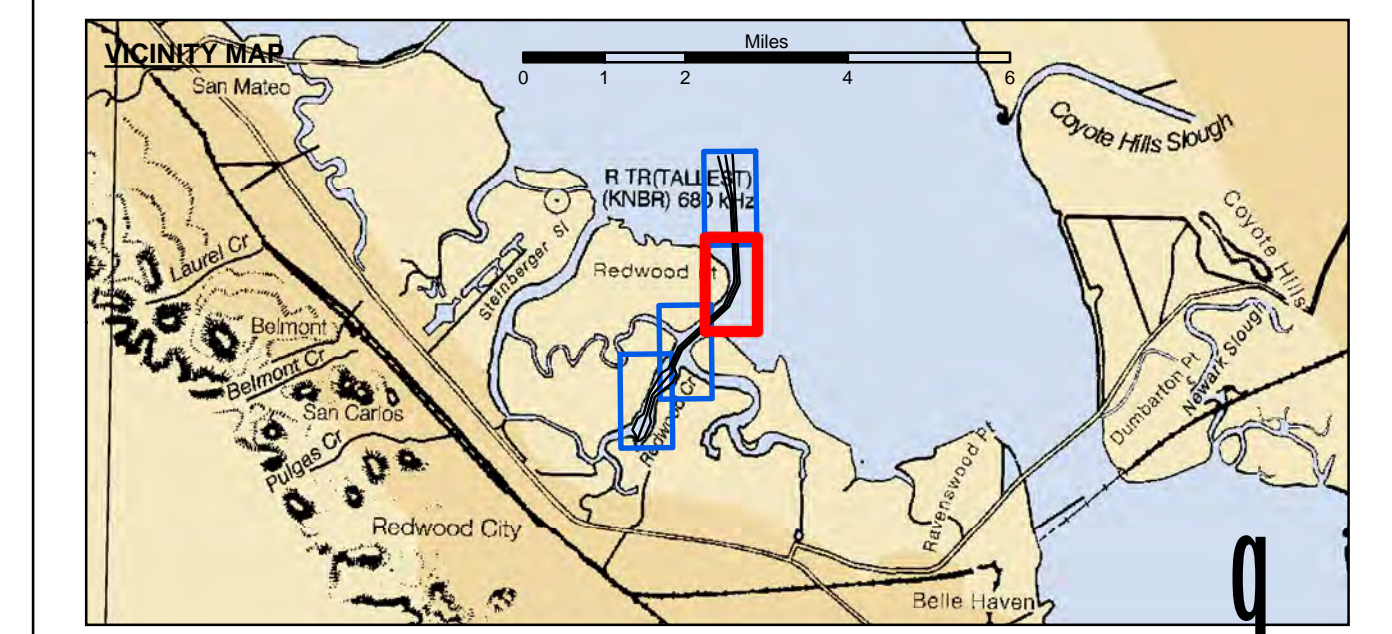
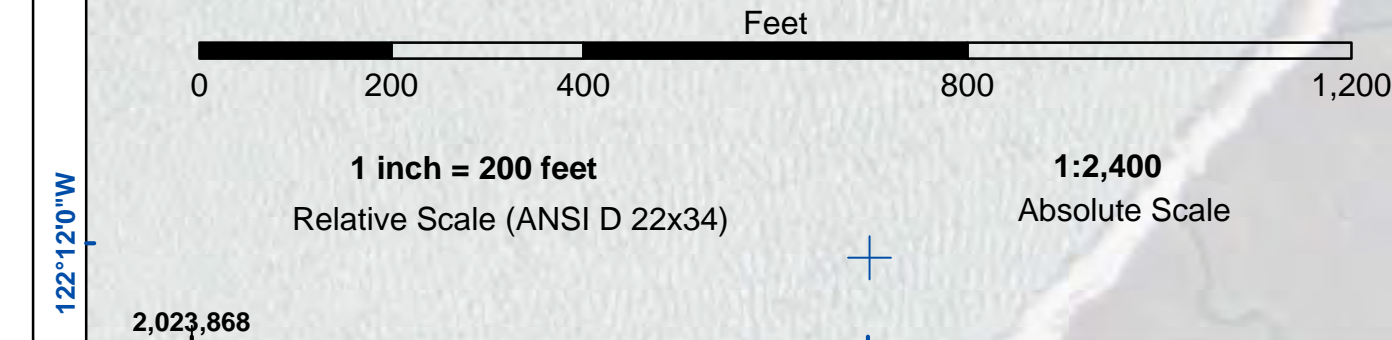
US Army Corps of Engineers
 San Francisco District
 1455 Market Street
 San Francisco, CA 94103

DISCLAIMER
 The United States Government furnishes this information as a service to the public. It is not intended to be used for navigation. The user is responsible for the results of any application of the data for other than its intended purpose. The United States Government makes no warranty, expressed or implied, concerning the accuracy, completeness, or timeliness of the information. The user is responsible for the results of any application of the data for other than its intended purpose. These data belong to the Government. Therefore, the recipient may not transfer these data to others without also transferring this disclaimer.

Chart Date:	Apr 26, 2017
Surveyed By:	JOHN C. MORROW
Plotted By:	PDT
Checked By:	PDT
Drawn By:	PDT

CALIFORNIA
REWOOD CITY HARBOR
 PRE-SOLICITATION SURVEY
 21-24 APRIL 2017

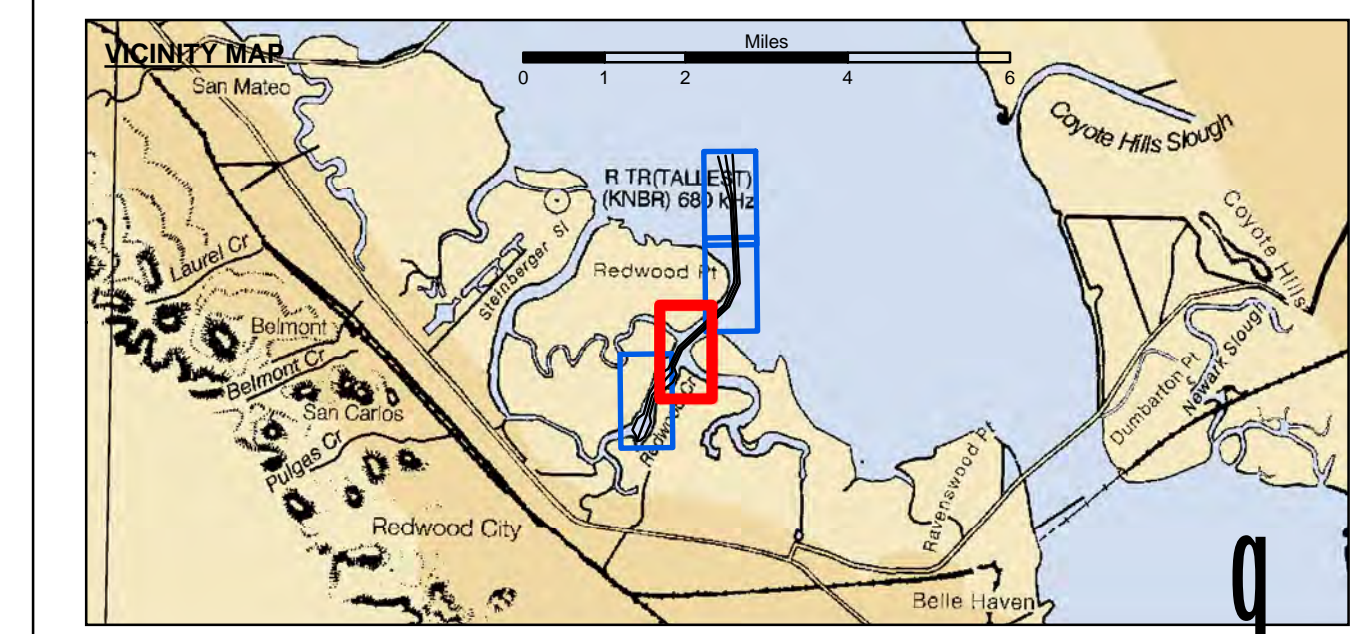
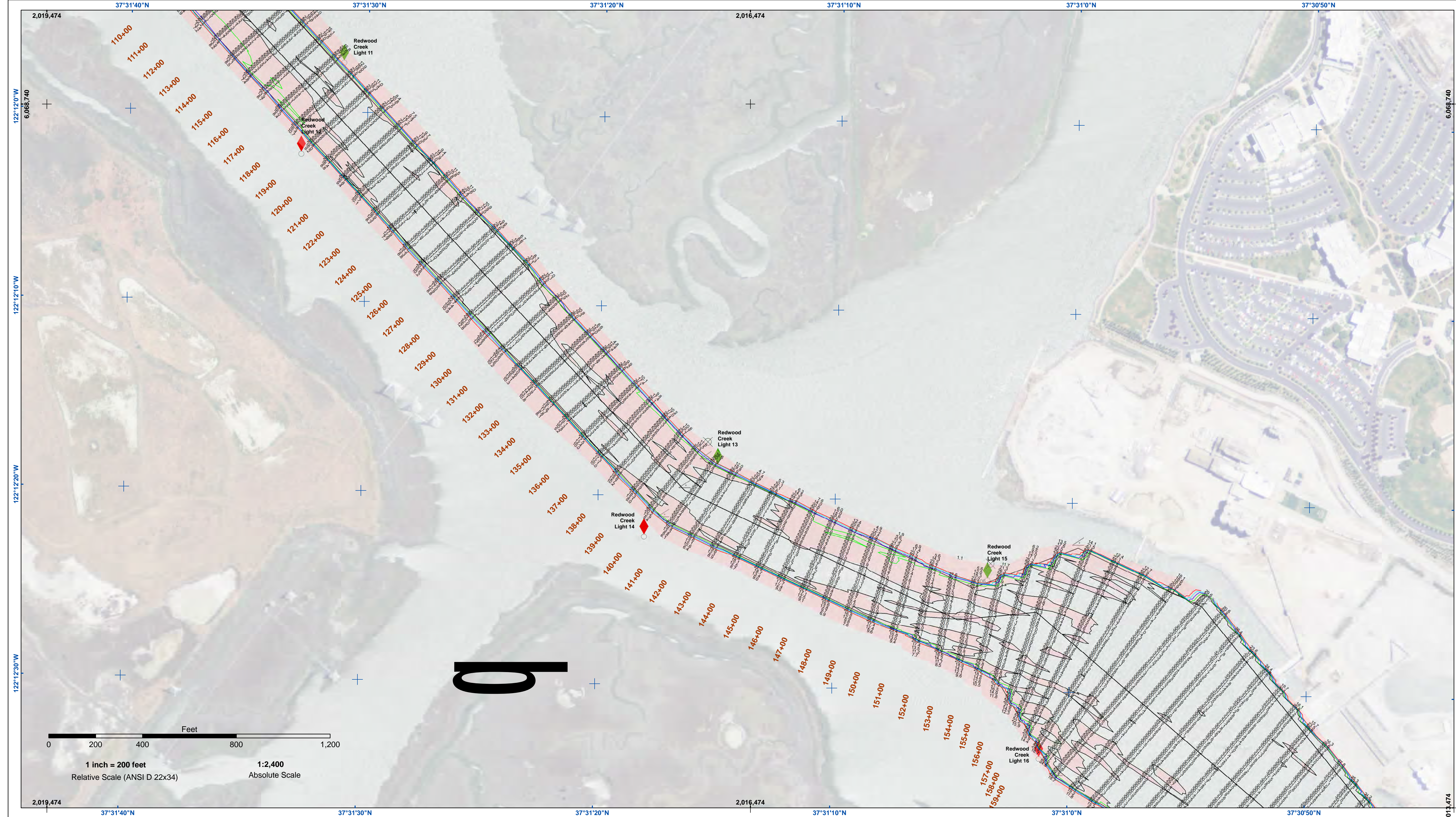
Sheet Reference Number
 2 of 4



	Federal Navigation Channel		Beacon, General	Contours	
	Shoaling Area		Obstruction Point		
	Material Placement Area		Navigation Buoy		
	Anchorage Area		Navigation Buoy		
	Wreck Area		Shoalest Sounding*		
	Submerged Wreck				-30
	Angle Point				-29
					-28
					-27
					-26

NOTES:
 DRAWING NOT TO BE USED FOR NAVIGATION. ONLY CHANNEL CONDITION AT DATE OF SURVEY.
 THE LOCATION OF ALL NAVIGATION AIDS ARE BASED ON INFORMATION PROVIDED BY THE U.S. COAST GUARD. BUOY LOCATIONS REPRESENT THE POSITION OF THE SINKER ONLY.
 INFORMATION DEPICTED ON THIS MAP REPRESENTS THE RESULTS OF SURVEYS MADE ON THE DATES INDICATED AND CAN ONLY BE CONSIDERED AS INDICATING THE GENERAL CONDITIONS AT THAT TIME.
 SURVEYED BY THE CORPS OF ENGINEERS.
 *SHOALEST SOUNDING PER QUARTER PER REACH

SOUNDINGS WERE TAKEN BY FATHOMETER AND ARE SHOWN TO THE NEAREST TENTH OF A FOOT. SOUNDINGS ARE BASED ON THE DATUM OF MEAN LOWER LOW WATER AT THE LOCALITY, NAVD 88. BASE MAPS ARE USDA NAIP 2010.
 PLANE GRID, BEARING AND COORDINATES ARE BASED ON THE STATE OF CALIFORNIA COORDINATE SYSTEM, LAMBERT CONFORMAL PROJECTION, ZONE III NAD 83, CALIFORNIA, AS DESCRIBED IN SPECIAL PUBLICATION NO. 235, PUBLISHED BY NATIONAL OCEAN SURVEY.
 THE PROJECT DEPTH IS 30 FEET AT M.L.L.W.
 SOUNDINGS ARE BASED ON THE TIDE GAUGE LOCATED AT RAZ 6 & RAZ 5
 LINES 18+00 TO 100+00 @ BEACON NO. 8
 LINES 101+00 TO 160+00 @ RAZ 6
 LINES 160+ TO 208+49 @ RAZ 5
 VERTICAL CONTROL:
 BENCHMARK, MLLW ELEV., AGENCY
 BM 4501 A, NOS TIDAL DISK, 12.15 MLLW
 BM 4500 U 1998, NOS TIDAL DISK, 11.88 MLLW
 BM 13 1974, NOS TIDAL DISK, 12.99 MLLW
 HORIZONTAL CONTROL:
 DESIGNATION, SOURCE, XYZ
 COAST GUARD D-BEACON.



	Federal Navigation Channel		Beacon, General	Contours	
	Shoaling Area		Obstruction Point		-30
	Material Placement Area		Navigation Buoy		-29
	Anchorage Area		Navigation Buoy		-28
	Wreck Area		Navigation Buoy		-27
	Submerged Wreck		Shoalest Sounding*		-26
	Angle Point				

NOTES:
 DRAWING NOT TO BE USED FOR NAVIGATION. ONLY CHANNEL CONDITION AT DATE OF SURVEY.
 SOUNDINGS ARE BASED ON THE DATUM OF MEAN LOWER LOW WATER AT THE LOCALITY, NAVD 88.
 BASE MAPS ARE USDA NAIP 2010.
 INFORMATION DEPICTED ON THIS MAP REPRESENTS THE RESULTS OF SURVEYS
 MADE ON THE DATES INDICATED AND CAN ONLY BE CONSIDERED AS INDICATING
 THE GENERAL CONDITIONS AT THAT TIME.
 SURVEYED BY THE CORPS OF ENGINEERS.
 *SHOALEST SOUNDING PER QUARTER PER REACH

SOUNDINGS WERE TAKEN BY FATHOMETER AND ARE SHOWN TO THE NEAREST TENTH OF A FOOT.
 SOUNDINGS ARE BASED ON THE DATUM OF MEAN LOWER LOW WATER AT THE LOCALITY, NAVD 88.
 BASE MAPS ARE USDA NAIP 2010.
 PLANE GRID, BEARING AND COORDINATES ARE BASED ON THE STATE OF CALIFORNIA COORDINATE SYSTEM,
 LAMBERT CONFORMAL PROJECTION, ZONE III NAD 83,
 CALIFORNIA, AS DESCRIBED IN SPECIAL PUBLICATION NO. 235, PUBLISHED BY NATIONAL OCEAN SURVEY.
 THE PROJECT DEPTH IS 30 FEET AT M.L.L.W.
 SOUNDINGS ARE BASED ON THE TIDE GAUGE LOCATED AT RAZ 6 & RAZ 5
 LINES 18+00 TO 100+00 @ BEACON NO. 8
 LINES 101+00 TO 160+00 @ RAZ 6
 LINES 160+ TO 208+49 @ RAZ 5
 VERTICAL CONTROL:
 BENCHMARK, MLLW ELEV., AGENCY
 BM 4501 A, NOS TIDAL DISK, 12.15 MLLW
 BM 4500 U 1998, NOS TIDAL DISK, 11.88 MLLW
 BM 13 1974, NOS TIDAL DISK, 12.99 MLLW
 HORIZONTAL CONTROL:
 DESIGNATION, SOURCE, XYZ
 COAST GUARD D-BEACON.

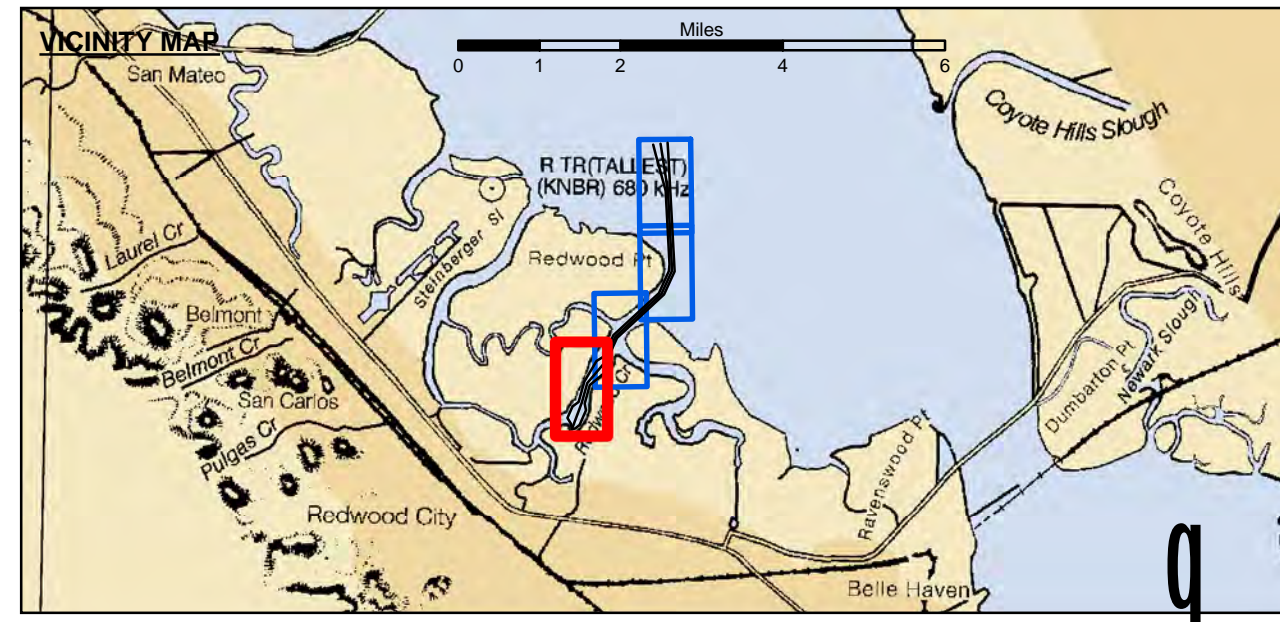
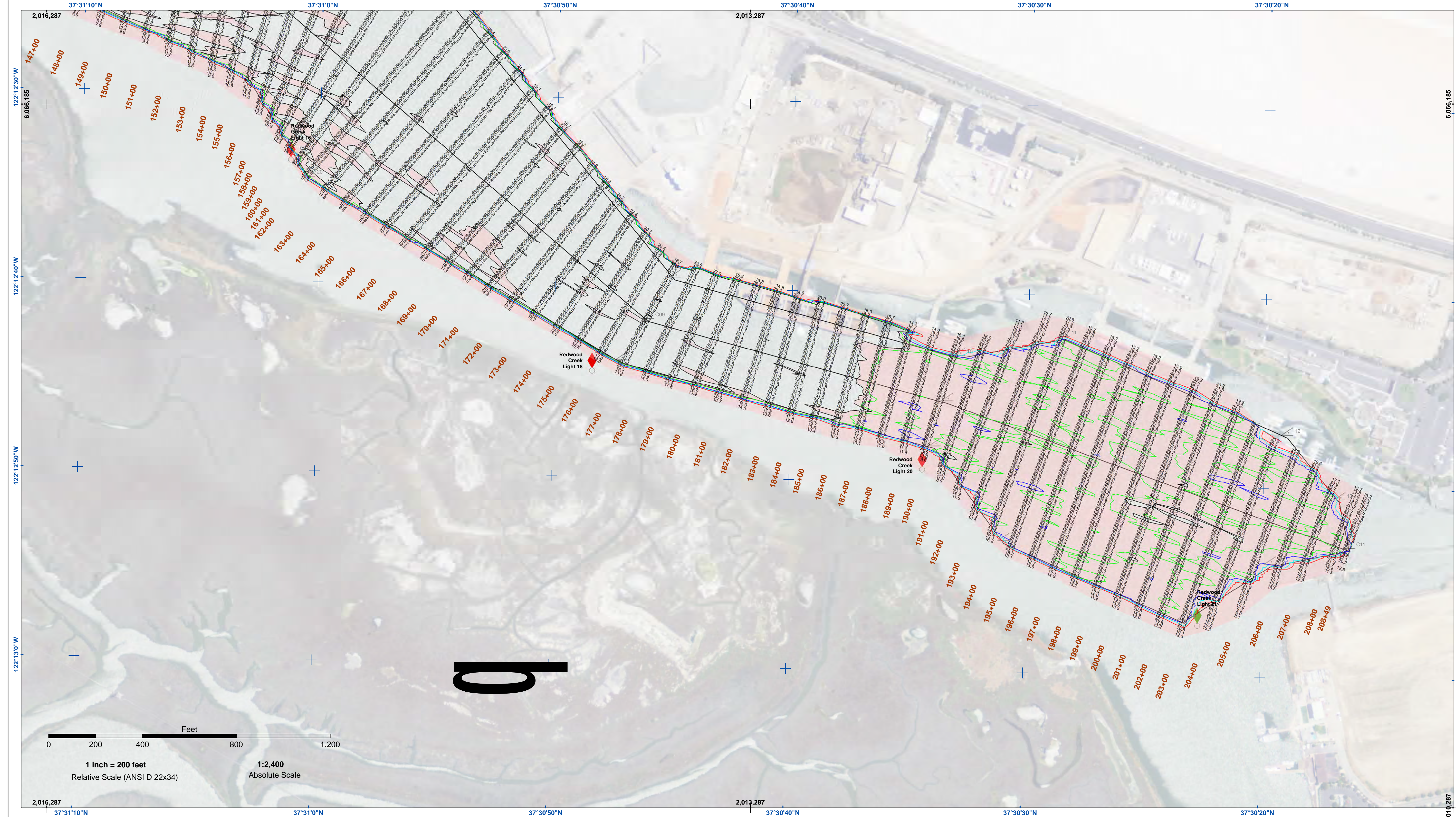
US Army Corps
 of Engineers
 San Francisco District
 1455 Market Street
 San Francisco, CA 94103

DISCLAIMER
 The United States Government furnishes this information as a service to the public and does not warrant, express or implied, the accuracy, completeness, or reliability of the information. The user is responsible for the results of any application of the data for other than its intended purpose. The data represents the results of data collected by the United States Government. The user is responsible for the results of any application of the data for other than its intended purpose. The data represents the results of data collected by the United States Government. The user is responsible for the results of any application of the data for other than its intended purpose.

Prepared Under the Direction of JOHN C. MORROW LT. COLONEL, C.E., DISTRICT ENGINEER	Surveyed By:	Chart Date:
Submittal: Hydro Survey Team Leader	Plotted By:	Apr 26, 2017
Recommendation: Chief, Hydro Survey Section	Checked By:	Designed by:
Approved: Chief, Construction Branch	PDT	PDT
		Drawn by:
		PDT

CALIFORNIA
REWOOD CITY HARBOR
 PRE-SOLICITATION SURVEY
 21-24 APRIL 2017

Sheet Reference Number
 3 of 4



	Federal Navigation Channel		Beacon, General	Contours	
	Shoaling Area		Obstruction Point		
	Material Placement Area		Navigation Buoy		
	Anchorage Area		Navigation Buoy		
	Wreck Area		Shoalest Sounding*		
	Submerged Wreck				-30
	Angle Point				-29
					-28
					-27
					-26

NOTES:
 DRAWING NOT TO BE USED FOR NAVIGATION. ONLY CHANNEL CONDITION AT DATE OF SURVEY.
 THE LOCATION OF ALL NAVIGATION AIDS ARE BASED ON INFORMATION PROVIDED BY THE U.S. COAST GUARD. BUOY LOCATIONS REPRESENT THE POSITION OF THE SINKER ONLY.
 INFORMATION DEPICTED ON THIS MAP REPRESENTS THE RESULTS OF SURVEYS MADE ON THE DATES INDICATED AND CAN ONLY BE CONSIDERED AS INDICATING THE GENERAL CONDITIONS AT THAT TIME.
 SURVEYED BY THE CORPS OF ENGINEERS.
 *SHOALEST SOUNDING PER QUARTER PER REACH

SOUNDINGS WERE TAKEN BY FATHOMETER AND ARE SHOWN TO THE NEAREST TENTH OF A FOOT. SOUNDINGS ARE BASED ON THE DATUM OF MEAN LOWER LOW WATER AT THE LOCALITY, NAVD 88. BASE MAPS ARE USDA NAIP 2010.
 PLANE GRID, BEARING AND COORDINATES ARE BASED ON THE STATE OF CALIFORNIA COORDINATE SYSTEM, LAMBERT CONFORMAL PROJECTION, ZONE III NAD 83, CALIFORNIA, AS DESCRIBED IN SPECIAL PUBLICATION NO. 235, PUBLISHED BY NATIONAL OCEAN SURVEY.
 THE PROJECT DEPTH IS 30 FEET AT M.L.L.W.
 SOUNDINGS ARE BASED ON THE TIDE GAUGE LOCATED AT RAZ 6 & RAZ 5
 LINES 18+00 TO 100+00 @ BEACON NO. 8
 LINES 101+00 TO 160+00 @ RAZ 6
 LINES 160+ TO 208+49 @ RAZ 5
 VERTICAL CONTROL:
 BENCHMARK, MLLW ELEV., AGENCY
 BM 4501 A, NOS TIDAL DISK, 12.15 MLLW
 BM 4508 U 1998, NOS TIDAL DISK, 11.88 MLLW
 BM 13 1974, NOS TIDAL DISK, 12.99 MLLW
 HORIZONTAL CONTROL:
 DESIGNATION, SOURCE, XYZ
 COAST GUARD D-BEACON.



DISCLAIMER
 The United States Government furnishes this information as a service to the public. It is not intended to be used for navigation. The user is responsible for the results of any application of this data for other than its intended purpose. The United States Government makes no warranty, expressed or implied, concerning the accuracy, completeness, or reliability of the information furnished. The user is responsible for the results of any application of this data for other than its intended purpose. These data belong to the Government. Therefore, the user is not to disseminate these data to others without also transferring this disclaimer.

Prepared Under the Direction of JOHN C. MORROW LT. COLONEL, C.E., DISTRICT ENGINEER	Surveyed By:	Chart Date:
Submitted: Hydro Survey Team Leader	Plotted By: PDT	Apr 26, 2017
Recommended: Chief, Hydro Survey Section	Checked By: PDT	Designed by:
Approved: Chief, Construction Branch	Drawn by: PDT	

CALIFORNIA
REWOOD CITY HARBOR
 PRE-SOLICITATION SURVEY
 21-24 APRIL 2017

Sheet Reference Number
 4 of 4