



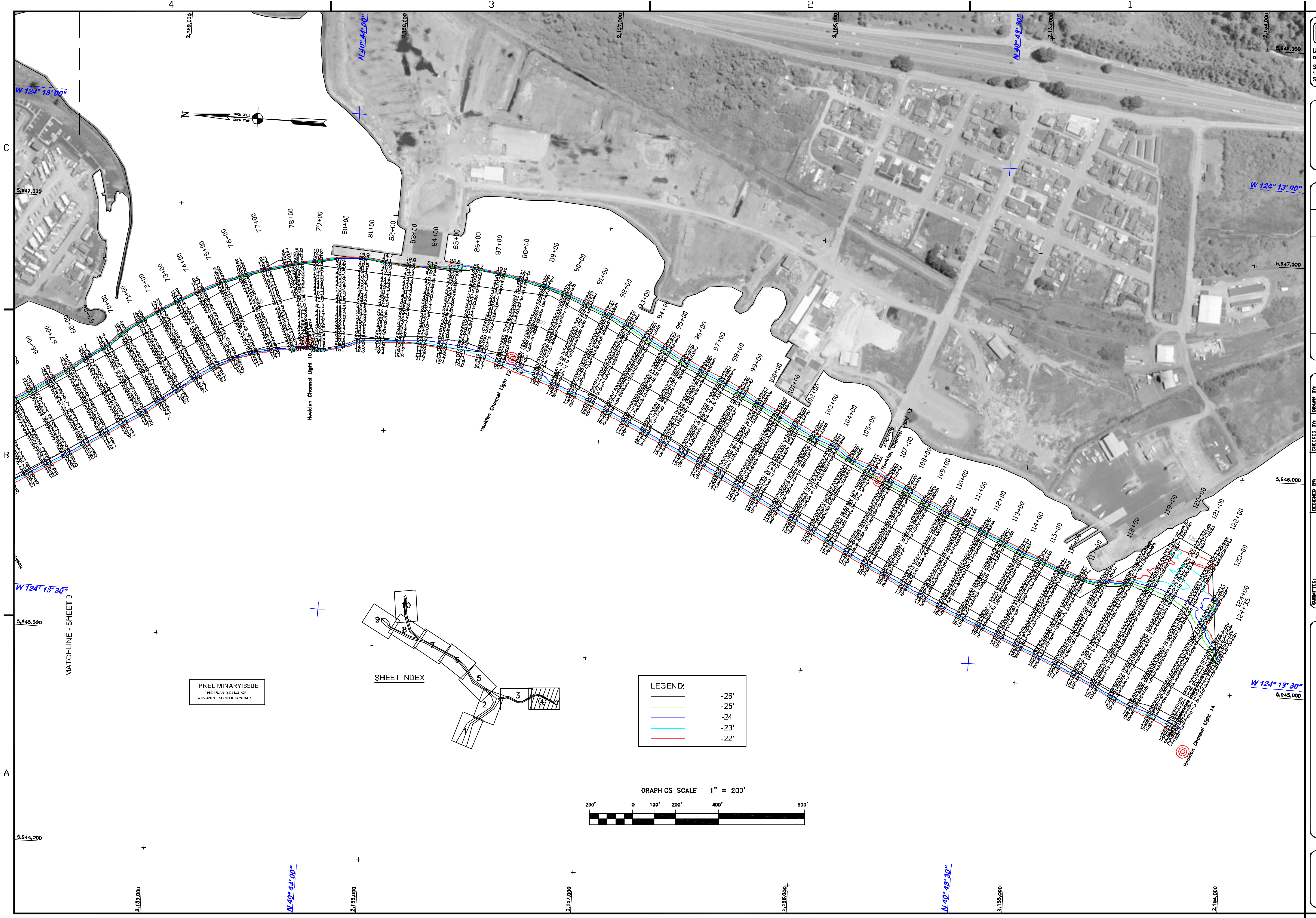
US Army Corps  
of Engineers  
San Francisco District  
1455 Market Street  
San Francisco, CA 94103

| Mark | Description | Date | Appr. |
|------|-------------|------|-------|
|      |             |      |       |
|      |             |      |       |
|      |             |      |       |
|      |             |      |       |
|      |             |      |       |
|      |             |      |       |
|      |             |      |       |
|      |             |      |       |
|      |             |      |       |

|  |                                 |            |
|--|---------------------------------|------------|
| SUBMITTED BY:<br>PDT<br>Hydro Survey Team Leader   | DESIGNED BY:                    | DRAWN BY:  |
|  | PDT                             | PDT        |
| APPROVAL RECOMMENDED:<br>CHIEF, HYDRO SURVEY SECTION                                     | DATE:                           | SHEET NO.: |
|  | 2/13/2014                       | 4 OF 10    |
| APPROVED:  | DATE:                           | SHEET NO.: |
|  | PREPARED UNDER THE DIRECTION OF | DATE:      |
| CHIEF, CONTINUATION STANDS   | DATE:                           | SHEET NO.: |
|  |                                 |            |
| PREPARED UNDER THE DIRECTION OF<br>JOHN K. BAKER<br>LT. COLONEL, C.E., DISTRICT ENGINEER |                                 |            |

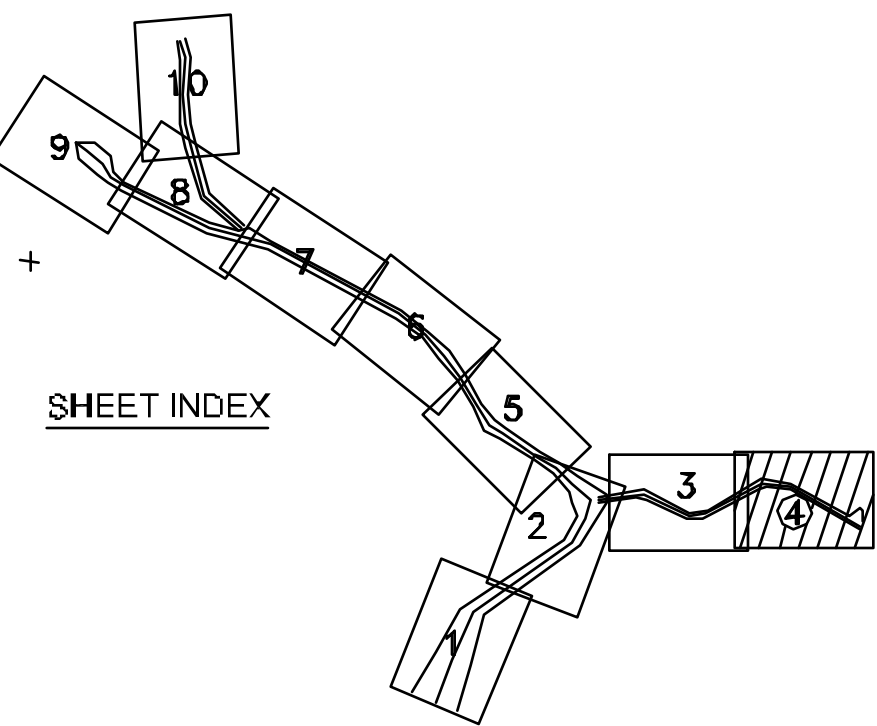
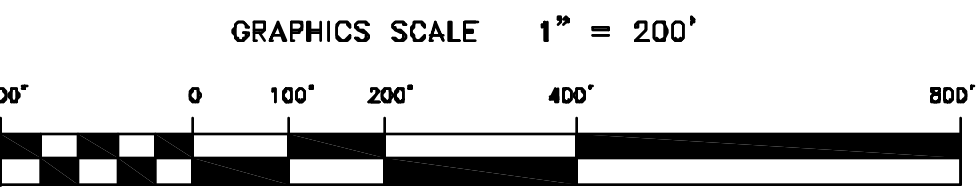
HUMBOLDT COUNTY  
CALIFORNIA  
HUMBOLDT BAY  
FIELDSLANDING CHANNEL  
CONDITION SURVEY  
6-10 FEBRUARY 2014

Sheet  
reference  
number  
**C4**



**LEGEND:**

- 26'
- 25'
- 24'
- 23'
- 22'



**PRELIMINARY ISSUE**  
HYDRO SURVEY SECTION  
ADVANCE IN CHIEF OFFICE