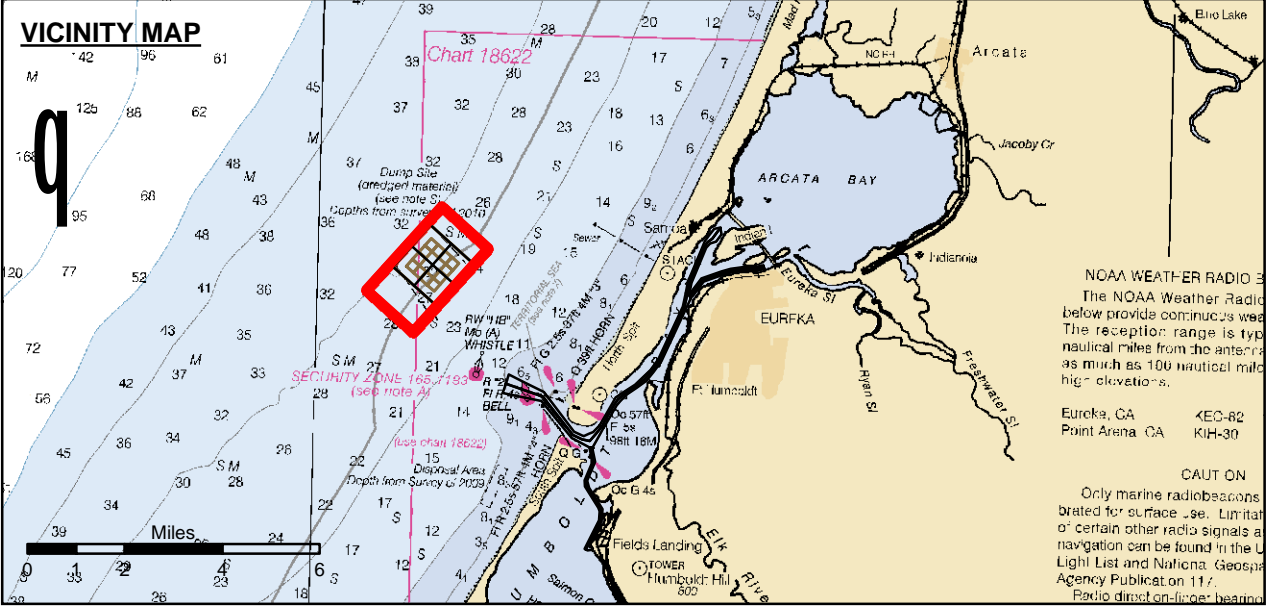


DISCLAIMER
The United States Government furnishes no warranty, expressed or implied, concerning the accuracy, completeness, or reliability of the information furnished. The user is responsible for the results of any application of the data for other than its intended purpose. The recipient may not transfer these data to others without also transferring the Disclaimer.

Prepared Under the Direction of JOHN C. MORROW LT Colonel, C.E., District Engineer	Chart Date: Oct 28, 2016
Submitted: PDT	Designed by:
Recommended: Chief, Hydro Survey Section	Drawn by: PDT
Approved: Chief, Construction Branch	Checked by: PDT

HUMBOLDT COUNTY
**HUMBOLDT BAY
OPEN OCEAN DISPOSAL SITE
POST-DREDGE SURVEY**
14 OCTOBER 2016



- Federal Navigation Channel
- Shoaling Area
- Placement Area
- Anchorage Area
- Wreck Area
- Submerged Wreck
- Zone_I_Angle_Points
- Beacon, General
- Obstruction Point
- Navigation Buoy
- Navigation Buoy
- Shoalest Sounding*

NOTES:
DRAWING NOT TO BE USED FOR NAVIGATION. ONLY CHANNEL CONDITION AT DATE OF SURVEY.
THE LOCATION OF ALL NAVIGATION AIDS ARE BASED ON INFORMATION PROVIDED BY THE U.S. COAST GUARD. BUOY LOCATIONS REPRESENT THE POSITION OF THE SINKER ONLY.
SURVEYED BY THE CORPS OF ENGINEERS.
SOUNDINGS ARE TAKEN BY FATHOMETER AND ARE SHOWN TO THE NEAREST FOOT AND TENTHS OF A FOOT.
SOUNDINGS ARE BASED ON THE DATUM OF MEAN LOWER LOW WATER AT THE LOCALITY.

**Sheet
Reference
Number**
1 of 1