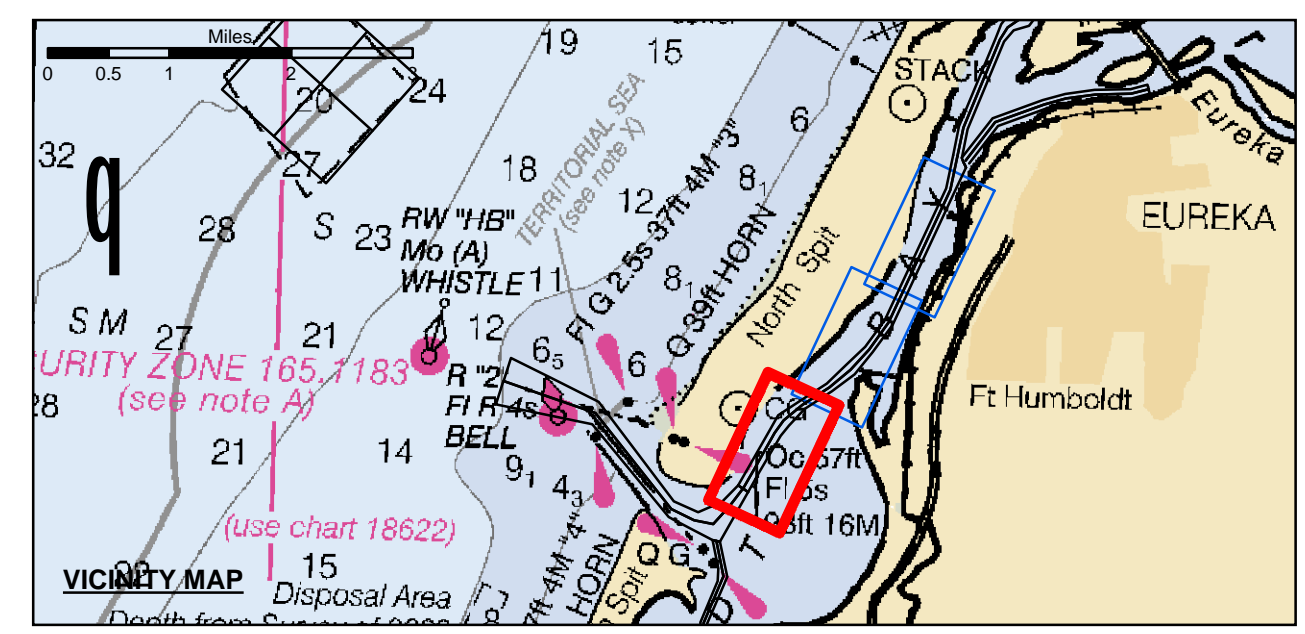


Angle Point	Easting	Northing
06	5945167.02	2166658.81
07	5945752.39	2166911.73
08	5946464.09	2167631.33
09	5946953.59	2168479.53
10	5947831.59	2170042.13
11	5948193.09	2170679.33
12	5949124.59	2171287.03
13	5950308.09	2172059.13
14	5951141.79	2172853.23
15	5951976.39	2173648.23
16	5952816.79	2174408.43
17	5954847.79	2180520.43
28	5956165.60	2181942.62
29	5956348.68	2181424.64
30	5955866.99	2180393.43
31	5953163.09	2174604.63
32	5952300.39	2173413.53
33	5951516.79	2172459.53
34	5950526.69	2171724.13
35	5949343.09	2170952.03
36	5948674.79	2170232.13
37	5948301.49	2169794.33
38	5947388.59	2168234.23
39	5946907.49	2167381.23
40	5946431.39	2166537.23
C07	5946085.69	2166728.23
C08	5946686.99	2167508.93
C09	5947166.09	2168359.43
C10	5948049.99	2169917.43
C11	5948433.89	2170455.43
C12	5949233.79	2171119.43
C13	5950417.39	2171981.43
C14	5951329.29	2172856.43
C15	5952138.39	2173530.43
C16	5952989.89	2174706.43
C17	5955671.89	2180451.43

**US Army Corps of Engineers**  
 San Francisco District  
 1455 Market Street  
 San Francisco, CA 94103

**DISCLAIMER**  
 The United States Government furnishes this information for the general information of the recipient. The recipient understands that the data represents the results of data collected by the United States Government and that the data is not intended for use in any other manner than its intended purpose. The recipient shall not be held liable for any errors or omissions in the data or for any consequences arising from the use of the data. The recipient shall not be held liable for any damages, including consequential damages, arising from the use of the data. The recipient shall not be held liable for any claims, damages, or losses, including consequential damages, arising from the use of the data. The recipient shall not be held liable for any claims, damages, or losses, including consequential damages, arising from the use of the data. The recipient shall not be held liable for any claims, damages, or losses, including consequential damages, arising from the use of the data.

Prepared Under the Direction of	JOHN C. MORROW	Surveyed By:	Plotted By:	Checked By:	Drawn by:
Submitted:	Hydro Survey Team Leader	Plotted By:	PDT	Checked By:	PDT
Recommended:	Chief, Hydro Survey Section	Checked By:	PDT	Drawn by:	PDT
Approved:	Chief, Construction Branch	Checked By:	PDT	Drawn by:	PDT
Chart Date:	Jul 25, 2016	Designed by:			



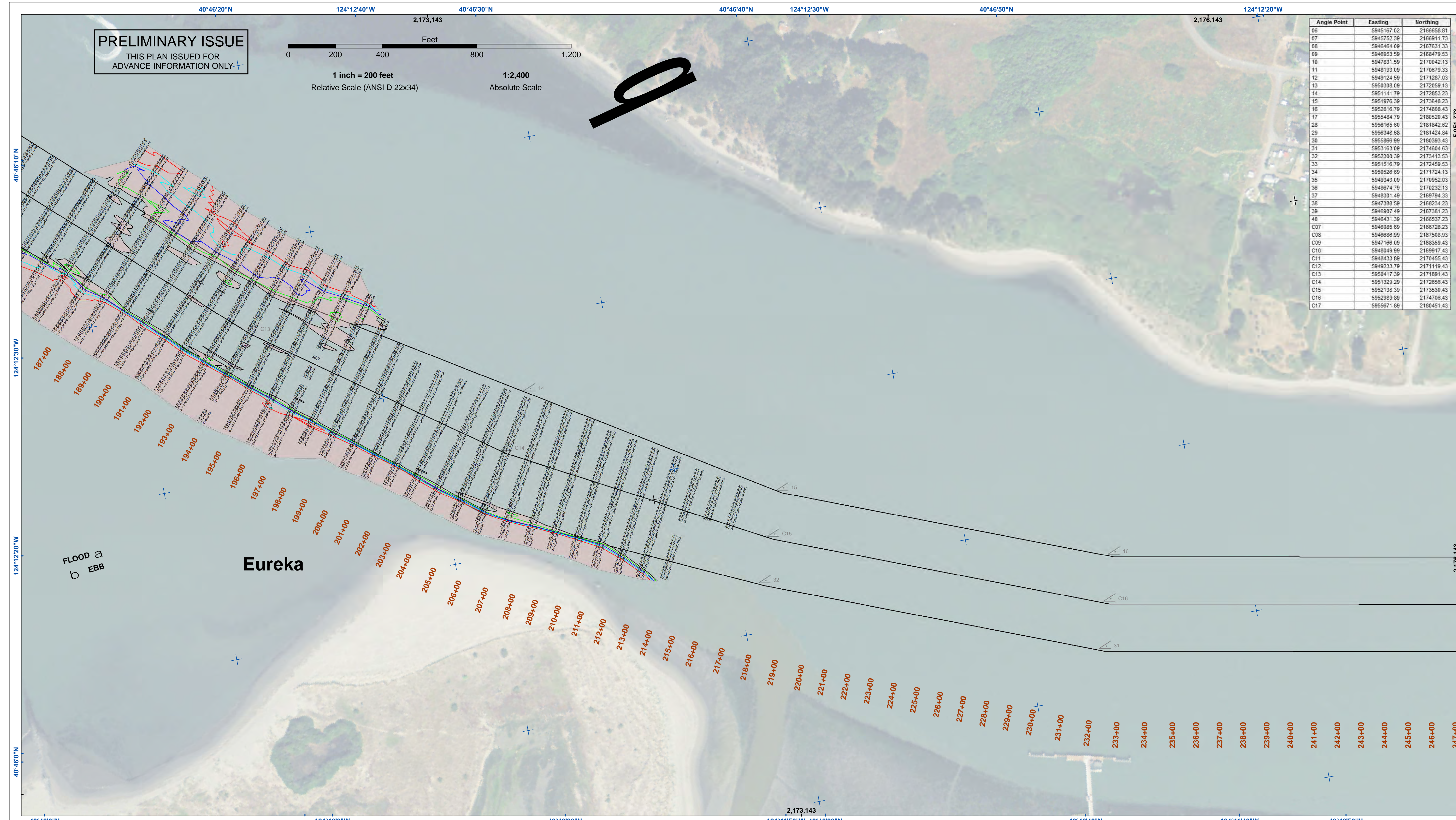
Federal Navigation Channel	Beacon, General	<b>Contours</b>
Shoaling Area	Obstruction Point	-38
Placement Area	Navigation Buoy	-37
Anchorage Area	Navigation Buoy	-36
Wreck Area	Navigation Buoy	-35
Submerged Wreck	Shoalest Sounding*	-34
Angle Point		

**NOTES:**  
 DRAWINGS NOT TO BE USED AS NAVIGATION. ONLY CHANNEL CONDITION AT DATE OF SURVEY. THE LOCATION OF ALL NAVIGATION AIDS ARE BASED ON INFORMATION PROVIDED BY THE U.S. COAST GUARD. BUOY LOCATION REPRESENT THE POSITION OF THE SINKER ONLY.  
 SURVEYED BY THE CORPS OF ENGINEERS.  
 SOUNDINGS WERE TAKEN BY FATHOMETER AND ARE SHOWN TO THE NEAREST TENTHS OF A FOOT.  
 SOUNDINGS ARE BASED ON THE DATUM OF MEAN LOWER LOW WATER AT THE LOCALITY.  
 PLANE GRID AND COORDINATES ARE BASED ON THE STATE OF CALIFORNIA COORDINATE SYSTEM, LAMBERT CONFORMAL PROJECTION, ZONE 1 NAD 83, CALIFORNIA, AS DESCRIBED IN SPECIAL PUBLICATION NO. 235, PUBLISHED BY THE NATIONAL OCEAN SURVEY.

PROJECT DEPTHS ARE AS FOLLOWS:  
 BAR & ENTRANCE CHANNEL = 48 FEET  
 NORTH BAY, SAMOA TO MILE 5.0 & = 38 FEET  
 EUREKA CHANNEL, FIELDS LANDING CHANNEL & MILE 5.0 TO "N" STREET = 26 FEET  
 SOUNDINGS ARE BASED ON TIDE GAUGES REFERENCED TO U.S.C. & G.S.  
 BENCH MARKS AS FOLLOWS:  
 EUREKA & SOMOA CHANNELS - B.M. NO. 4 (1906) ELEV. 33.61' M.L.L.W.  
 ENTRANCE & NORTH BAY CHANNELS - B.M. NO. 9 (1937) ELEV. 16.35' M.L.L.W.  
 FIELDS LANDING CHANNEL - B.M. NO. 5 (1925) ELEV. 8.52' M.L.L.W.

CALIFORNIA  
 HUMBOLDT COUNTY  
 HUMBOLDT BAY  
 NORTHBAY CHANNEL  
 CONDITION SURVEY  
 16 JUNE 2016

**Sheet Reference Number**  
 1 of 3



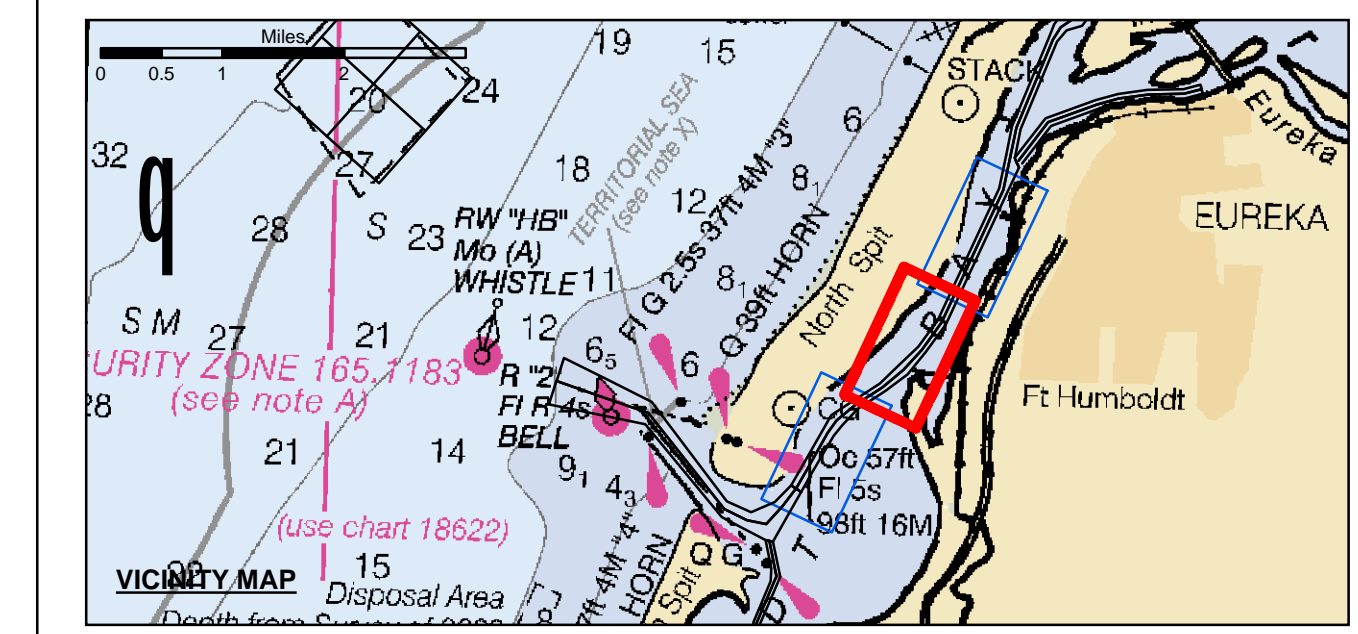
Angle Point	Easting	Northing
06	5945167.02	2166658.81
07	5945752.39	2166911.73
08	5946464.09	2167631.33
09	5946953.59	2168479.53
10	5947831.59	2170042.13
11	5948193.09	2170679.33
12	5949124.59	2171287.03
13	5950388.09	2172059.13
14	5951141.79	2172853.23
15	5951976.39	2173648.23
16	5952816.79	2174408.43
17	5953484.79	2175204.43
18	5954165.60	2176042.62
19	5954868.68	2176924.84
20	5955586.99	2177843.43
21	59563163.09	2178794.33
22	5957000.39	2179781.53
23	5957647.79	2180804.53
24	5958259.69	2181862.53
25	5958837.09	2182965.53
26	5959380.49	2184113.53
27	5959889.49	2185306.53
28	5960464.49	2186544.53
29	5961005.49	2187827.53
30	5961613.49	2189155.53
31	5962188.49	2190528.53
32	5962830.49	2191946.53
33	5963439.49	2193409.53
34	5964016.49	2194917.53
35	5964561.49	2196470.53
36	5965074.49	2198068.53
37	5965655.49	2199712.53
38	5966204.49	2201401.53
39	5966721.49	2203135.53
40	5967206.49	2204914.53
C07	5946085.69	2166728.23
C08	5946686.99	2167508.93
C09	5947166.09	2168359.43
C10	5948049.99	2169271.43
C11	5948433.69	2170245.43
C12	5949233.79	2171119.43
C13	5950417.39	2171981.43
C14	5951329.29	2172856.43
C15	5952138.39	2173730.43
C16	5952989.89	2174604.43
C17	5953671.89	2175478.43

**PRELIMINARY ISSUE**  
THIS PLAN ISSUED FOR  
ADVANCE INFORMATION ONLY

1 inch = 200 feet  
Relative Scale (ANSI D 22x34)

1:2,400  
Absolute Scale

**DISCLAIMER**  
The United States Government furnishes this data for informational purposes only. It is not intended for navigation. The data represents the results of data collected by the United States Army Corps of Engineers and is not intended for navigation. The user is responsible for the results of any application of the data for other than its intended purpose. The United States Government makes no warranty, expressed or implied, concerning the accuracy, completeness, or reliability of the data. The user is responsible for the results of any application of the data for other than its intended purpose. The United States Government makes no warranty, expressed or implied, concerning the accuracy, completeness, or reliability of the data. The user is responsible for the results of any application of the data for other than its intended purpose.



- Federal Navigation Channel
- Shoaling Area
- Placement Area
- Anchorage Area
- Wreck Area
- Submerged Wreck
- Angle Point
- Beacon, General
- Obstruction Point
- Navigation Buoy
- Navigation Buoy
- Shoalest Sounding\*
- Contours -38
- Contours -37
- Contours -36
- Contours -35
- Contours -34

**NOTES:**  
DRAWINGS NOT TO BE USED AS NAVIGATION. ONLY CHANNEL CONDITION AT DATE OF SURVEY. THE LOCATION OF ALL NAVIGATION AIDS ARE BASED ON INFORMATION PROVIDED BY THE U.S. COAST GUARD. BUOY LOCATION REPRESENT THE POSITION OF THE SINKER ONLY.

SOUNDINGS WERE TAKEN BY FATHOMETER AND ARE SHOWN TO THE NEAREST TENTHS OF A FOOT.  
SOUNDINGS ARE BASED ON THE DATUM OF MEAN LOWER LOW WATER AT THE LOCALITY.

PLANE GRID AND COORDINATES ARE BASED ON THE STATE OF CALIFORNIA COORDINATE SYSTEM, LAMBERT CONFORMAL PROJECTION, ZONE 1 NAD 83, CALIFORNIA, AS DESCRIBED IN SPECIAL PUBLICATION NO. 235, PUBLISHED BY THE NATIONAL OCEAN SURVEY.

PROJECT DEPTHS ARE AS FOLLOWS:  
BAR & ENTRANCE CHANNEL = 48 FEET  
NORTH BAY, SAMOIA TO MILE 5.0 & = 38 FEET  
EUREKA CHANNEL, FIELDS LANDING CHANNEL & MILE 5.0 TO "N" STREET = 26 FEET

1:00 INDICATES THE NUMBER AND BEGINNING OF A LINE OF SOUNDINGS.

SOUNDINGS ARE BASED ON TIDE GAUGES REFERENCED TO U.S.C. & G.S. BENCH MARKS AS FOLLOWS:  
EUREKA & SOMOIA CHANNELS - B.M. NO. 4 (1906) ELEV. 33.61' M.L.L.W.  
ENTRANCE & NORTH BAY CHANNELS - B.M. NO. 9 (1937) ELEV. 16.35' M.L.L.W.  
FIELDS LANDING CHANNEL - B.M. NO. 5 (1925) ELEV. 8.52' M.L.L.W.

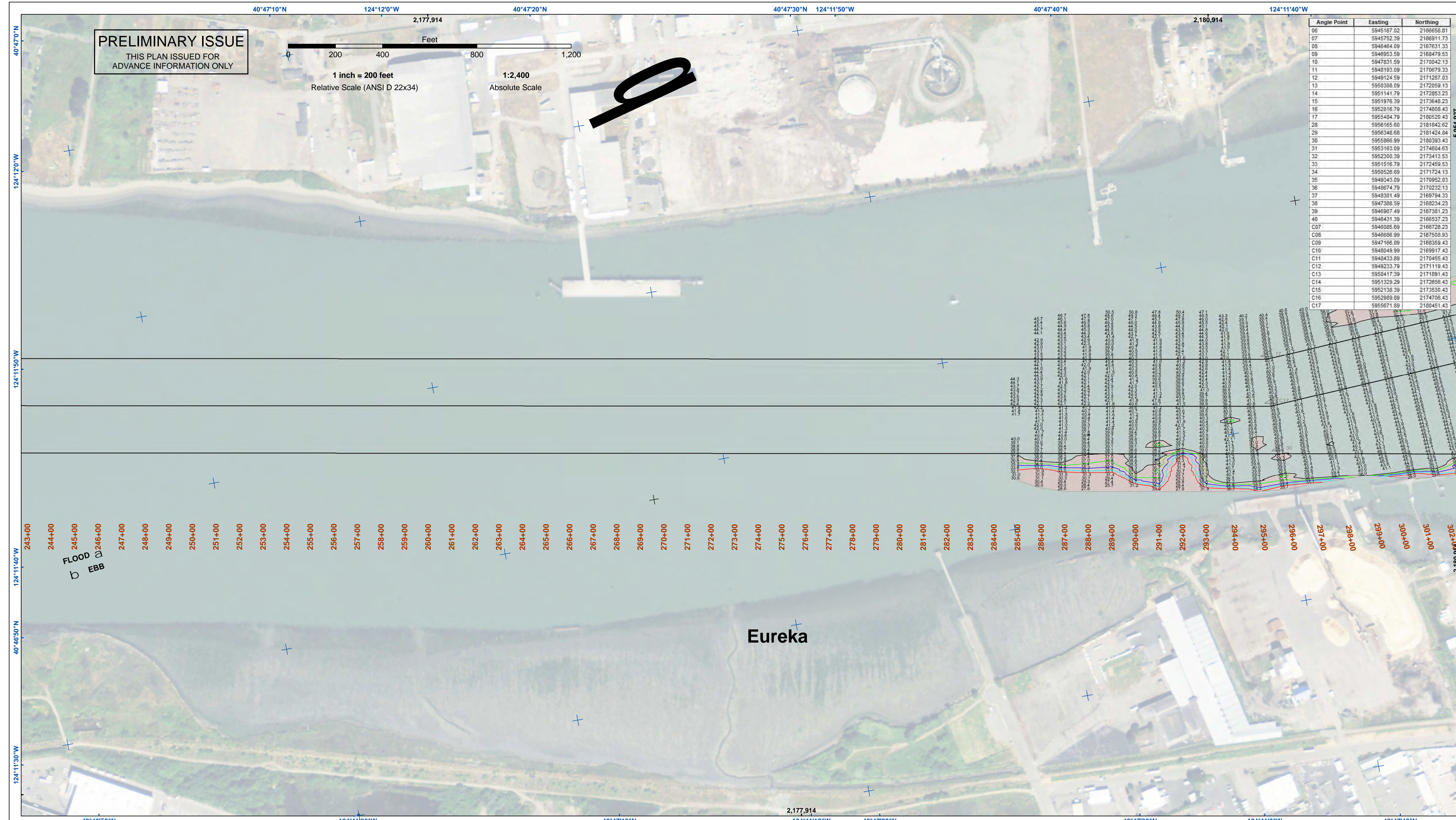
Prepared Under the Direction of	JOHN C. MORROW	Chart Date:	Jul 25, 2016
LT Colonel, C.E., District Engineer		Surveyed By:	
Submitted:	Hydro Survey Team Leader	Plotted By:	PDT
Recommended:	Chief, Hydro Survey Section	Checked By:	PDT
Approved:	Chief, Construction Branch	Drawn by:	PDT

CALIFORNIA

HUMBOLDT COUNTY

HUMBOLDT BAY  
NORTH BAY CHANNEL  
CONDITION SURVEY  
16 JUNE 2016

**Sheet Reference Number 2 of 3**

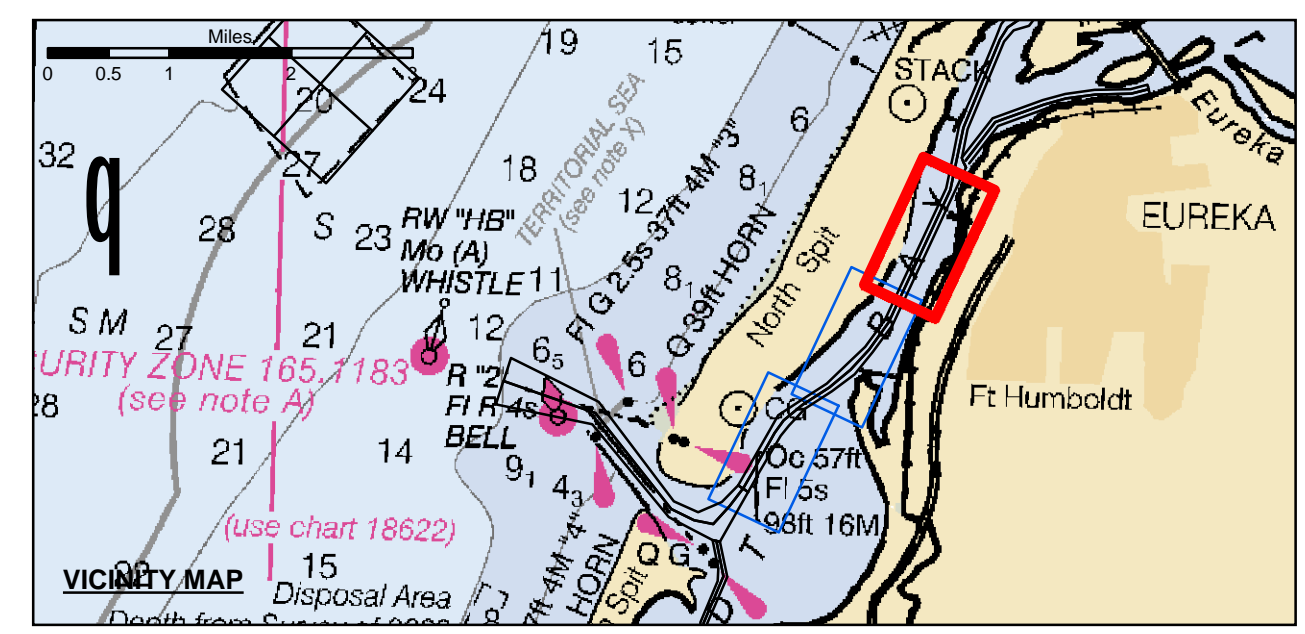


Angle Point	Easting	Northing
06	5945167.02	2166658.81
07	5945752.39	2166911.73
08	5946464.09	2167631.33
09	5946953.59	2168479.53
10	5947831.59	2170042.13
11	5948193.09	2170679.33
12	5949124.59	2171287.03
13	5950308.09	2172059.13
14	5951141.79	2172853.23
15	5951976.39	2173648.23
16	5952816.79	2174408.43
17	5954847.79	2180520.43
28	5956165.60	2181942.62
29	5956348.68	2181424.64
30	5955866.99	2180393.43
31	5953163.09	2174604.63
32	5952300.39	2173413.53
33	5951516.79	2172459.53
34	5950526.69	2171724.13
35	5949343.09	2170952.03
36	5948674.79	2170232.13
37	5948301.49	2169794.33
38	5947388.59	2168234.23
39	5946907.49	2167381.23
40	5946431.39	2166537.23
C07	5946085.69	2166728.23
C08	5946686.99	2167508.93
C09	5947166.09	2168359.43
C10	5948049.99	2169917.43
C11	5948433.69	2170455.43
C12	5949233.79	2171119.43
C13	5950417.39	2171981.43
C14	5951329.29	2172856.43
C15	5952138.39	2173530.43
C16	5952989.89	2174706.43
C17	5955671.89	2180451.43

**US Army Corps of Engineers**  
 San Francisco District  
 1455 Market Street  
 San Francisco, CA 94103

**DISCLAIMER**  
 The United States Government furnishes this information as a service to the public and does not warrant, express or implied, the accuracy, completeness, or reliability of the information. The user is responsible for the results of any application of the data for other than its intended purpose. The data represents the results of data collected by the United States Government and is not intended for navigation. The user is responsible for the results of any application of the data for other than its intended purpose. The data represents the results of data collected by the United States Government and is not intended for navigation. The user is responsible for the results of any application of the data for other than its intended purpose.

Prepared Under the Direction of	JOHN C. MORROW	Chart Date	Jul 25, 2016
Surveyed By	LT COLONEL C.E. DISTRICT ENGINEER	Plotted By	PDT
Submitted	Hydro Survey Team Leader	Checked By	PDT
Recommended	Chief, Hydro Survey Section	Drawn by	PDT
Approved	Chief, Construction Branch		



- Federal Navigation Channel
- Shoaling Area
- Placement Area
- Anchorage Area
- Wreck Area
- Submerged Wreck
- Angle Point
- Beacon, General
- Obstruction Point
- Navigation Buoy
- Navigation Buoy
- Shoalest Sounding\*
- Contours**
- 38
- 37
- 36
- 35
- 34

**NOTES:**  
 DRAWINGS NOT TO BE USED AS NAVIGATION. ONLY CHANNEL CONDITION AT DATE OF SURVEY. THE LOCATION OF ALL NAVIGATION AIDS ARE BASED ON INFORMATION PROVIDED BY THE U.S. COAST GUARD. BUOY LOCATION REPRESENT THE POSITION OF THE SINKER ONLY.  
 SURVEYED BY THE CORPS OF ENGINEERS.  
 SOUNDINGS WERE TAKEN BY FATHOMETER AND ARE SHOWN TO THE NEAREST TENTHS OF A FOOT.  
 SOUNDINGS ARE BASED ON THE DATUM OF MEAN LOWER LOW WATER AT THE LOCALITY.  
 PLANE GRID AND COORDINATES ARE BASED ON THE STATE OF CALIFORNIA COORDINATE SYSTEM, LAMBERT CONFORMAL PROJECTION, ZONE I NAD 83, CALIFORNIA, AS DESCRIBED IN SPECIAL PUBLICATION NO. 235, PUBLISHED BY THE NATIONAL OCEAN SURVEY.

PROJECT DEPTHS ARE AS FOLLOWS:  
 BAR & ENTRANCE CHANNEL = 48 FEET  
 NORTH BAY, SAMOA TO MILE 5.0 & = 38 FEET  
 EUREKA CHANNEL, FIELDS LANDING CHANNEL & MILE 5.0 TO "N" STREET = 26 FEET  
 1:00 INDICATES THE NUMBER AND BEGINNING OF A LINE OF SOUNDINGS.  
 SOUNDINGS ARE BASED ON TIDE GAUGES REFERENCED TO U.S.C. & G.S.  
 BENCH MARKS AS FOLLOWS:  
 EUREKA & SOMMA CHANNELS - B.M. NO. 4 (1906) ELEV. 33.61' M.L.L.W.  
 ENTRANCE & NORTH BAY CHANNELS - B.M. NO. 9 (1937) ELEV. 16.35' M.L.L.W.  
 FIELDS LANDING CHANNEL - B.M. NO. 5 (1925) ELEV. 8.52' M.L.L.W.

HUMBOLDT COUNTY  
 HUMBOLDT BAY  
 NORTH BAY CHANNEL  
 CONDITION SURVEY  
 16 JUNE 2016

**Sheet Reference Number**  
 3 of 3