

PRELIMINARY ISSUE
THIS PLAN ISSUED FOR
ADVANCE INFORMATION ONLY

NAD 83
CENTERLINE ANGLE POINTS
HUMBOLDT BAY
(BAR & ENTRANCE)

PT	X	Y
C-1	5936273.49	2172157.43
C-2	5938147.59	2171508.43
C-3	5940265.09	2170773.43
C-4	5943553.39	2166602.43
C-5	5944545.29	2166122.43
C-6	5945376.39	2165957.23
C-7	5946085.69	2166728.23
C-8	5946885.99	2167508.33
C-9	5947166.09	2168359.43
C-10	5948049.99	2169917.43
C-11	5948433.89	2170455.43
C-12	5948233.79	2171119.43
C-13	5950417.39	2171891.43
C-14	5951329.29	2172546.23
C-15	5952138.39	2173530.43
C-16	5952989.89	2174705.43
C-17	5955711.89	2180951.43
C-18	5956236.79	2183159.43
C-19	5957823.09	2186375.43
C-20	5958152.59	2187513.43
C-21	5958681.79	2187878.43
C-22	5959281.79	2188378.43
C-23	5959581.79	2189078.43

NAD 83
CHANNEL ANGLE POINTS
HUMBOLDT BAY (BAR & ENTRANCE)

PT	X	Y	PT	X	Y
1	5936596.69	2173163.63	24	5959081.79	2187578.43
2	5938385.39	2172268.83	25	5958421.69	2187381.23
3	5940404.09	2171258.93	26	5958007.99	2186903.83
4	5943566.09	2169944.43	27	5958425.99	2183933.63
5	5944727.49	2166468.93	28	5956165.59	2181842.63
6	5945239.99	2166690.33	29	5956346.69	2181424.83
7	5945752.39	2166911.73	30	5956666.99	2180383.43
8	5946464.09	2167631.33	31	5956165.59	2174904.63
9	5946853.59	2168479.53	32	5952300.39	2173413.53
10	5947931.59	2170042.13	33	5951516.79	2172459.63
11	5948193.09	2170679.33	34	5950525.69	2171724.13
12	5949124.59	2171287.03	35	5948343.09	2170952.03
13	5950308.09	2172059.13	36	5948674.79	2170232.13
14	5951141.79	2172853.23	37	5948301.49	2169794.33
15	5951976.39	2173546.23	38	5947386.59	2169234.23
16	5952816.79	2174808.43	39	5946907.49	2167381.23
17	5955484.79	2180520.43	40	5946431.39	2166537.23
18	5956047.79	2180225.33	41	5945072.89	2165162.43
19	5956736.19	2180755.43	42	5944554.09	2162524.33
20	5957883.59	2187647.53	43	5944363.09	2162776.33
21	5958881.79	2188378.43	44	5944441.39	2162611.63
22	5959581.79	2188378.43	45	5944121.19	2170287.33
23	5959681.79	2188378.43	46	5937908.79	2170746.43
			47	5935950.29	2171151.43

US Army Corps of Engineers
San Francisco District
1455 Market Street
San Francisco, CA 94103

DISCLAIMER
The United States Government furnishes this information for the general information of the recipient. The data represents the results of data collected by the United States Government. The data is not intended for use in any other manner than its intended purpose. The user is responsible for the accuracy of the data for any other purpose. The user is responsible for the accuracy of the data for any other purpose. The user is responsible for the accuracy of the data for any other purpose.

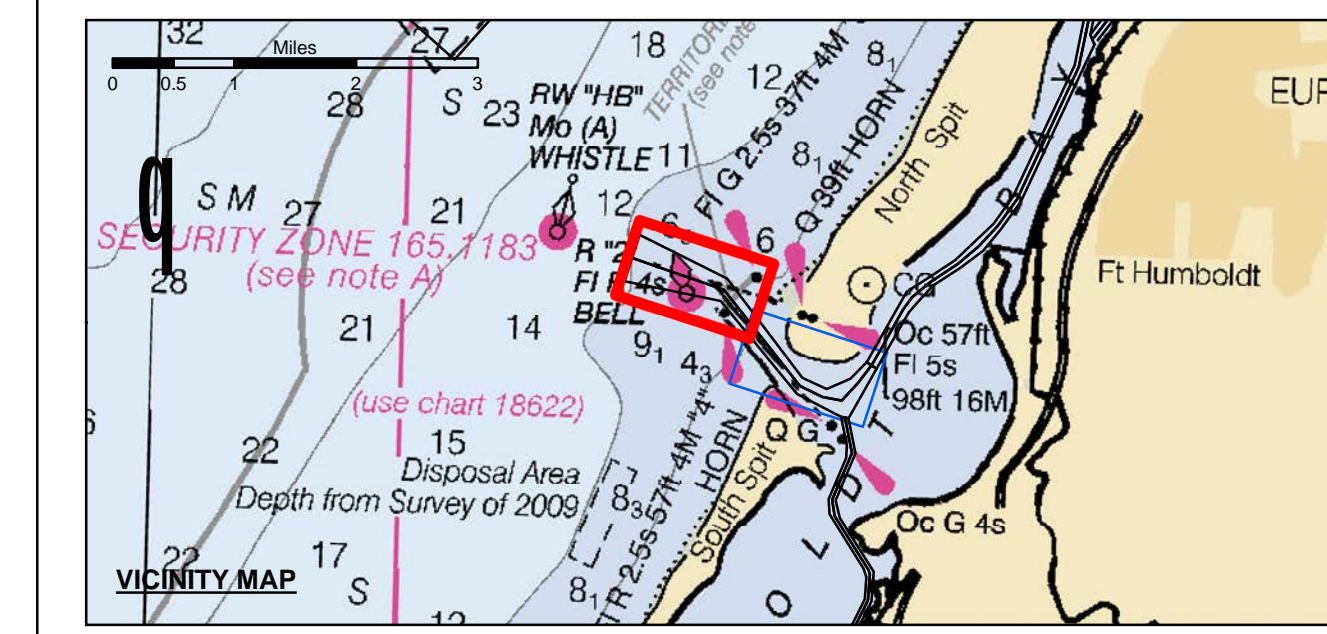
PREPARED UNDER THE DIRECTION OF
JOHN C. MORROW
LT. COLONEL, C.E., DISTRICT ENGINEER

Submittal: Hydro Survey Team Leader
Recommendation: Chief, Hydro Survey Section
Approval: Chief, Construction Branch

Chart Date:	Mar 06, 2017
Surveyed By:	PDT
Plotted By:	PDT
Checked By:	PDT
Designed by:	PDT
Drawn by:	PDT

CALIFORNIA
HUMBOLDT COUNTY
**HUMBOLDT BAY
& ENTRANCE CHANNEL
CONDITION SURVEY**
1-4 MARCH 2017

**Sheet
Number
1 of 2**



- Federal Navigation Channel
- Shoaling Area
- Placement Area
- Anchorage Area
- Wreck Area
- Submerged Wreck
- Zone_I_Angle_Points
- Beacon, General
- Obstruction Point
- Navigation Buoy
- Navigation Buoy
- Shoalest Sounding*
- Contours
- 48
- 47
- 46
- 45
- 44

NOTES:
DRAWINGS NOT TO BE USED AS NAVIGATION. ONLY CHANNEL CONDITION AT DATE OF SURVEY. THE LOCATION OF ALL NAVIGATION AIDS ARE BASED ON INFORMATION PROVIDED BY THE U.S. COAST GUARD. BUOY LOCATION REPRESENT THE POSITION OF THE SINKER ONLY.

SOUNDINGS WERE TAKEN BY FATHOMETER AND ARE SHOWN TO THE NEAREST TENTHS OF A FOOT.

SOUNDINGS ARE BASED ON THE DATUM OF MEAN LOWER LOW WATER AT THE LOCALITY.

PLANE GRID AND COORDINATES ARE BASED ON THE STATE OF CALIFORNIA COORDINATE SYSTEM, LAMBERT CONFORMAL PROJECTION, ZONE 1 NAD 83, CALIFORNIA, AS DESCRIBED IN SPECIAL PUBLICATION NO. 235, PUBLISHED BY THE NATIONAL OCEAN SURVEY.

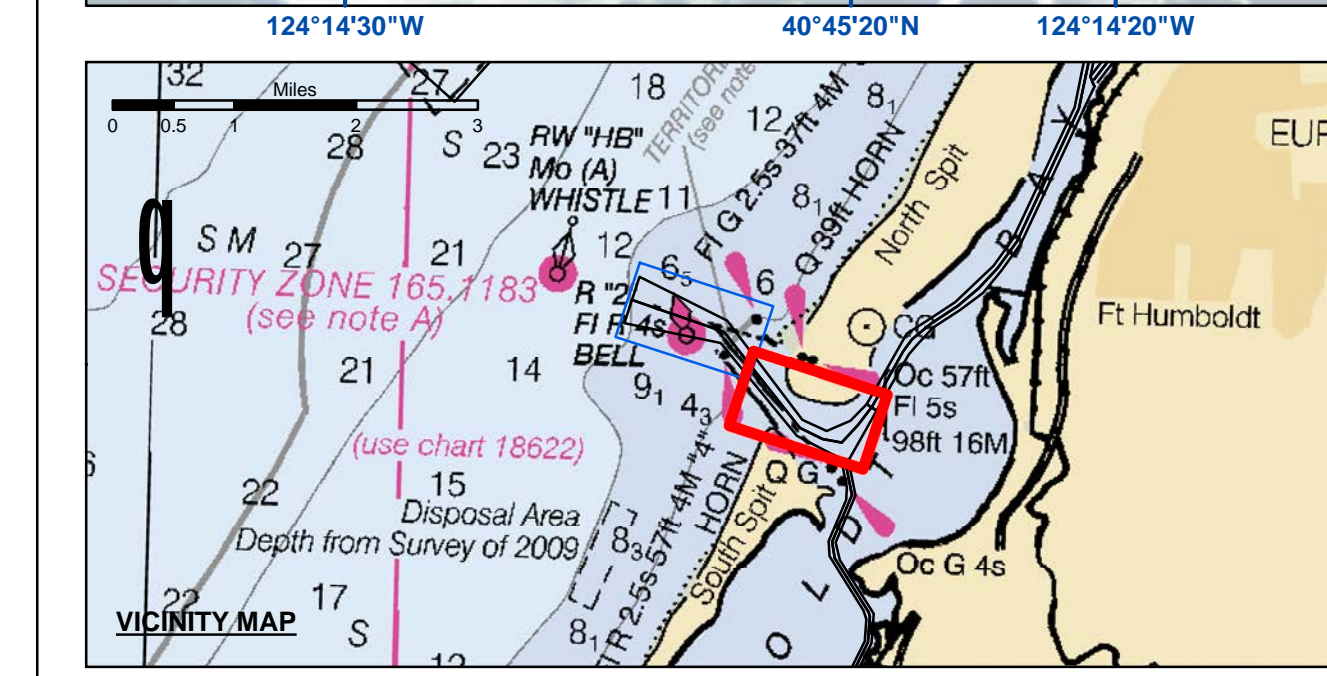
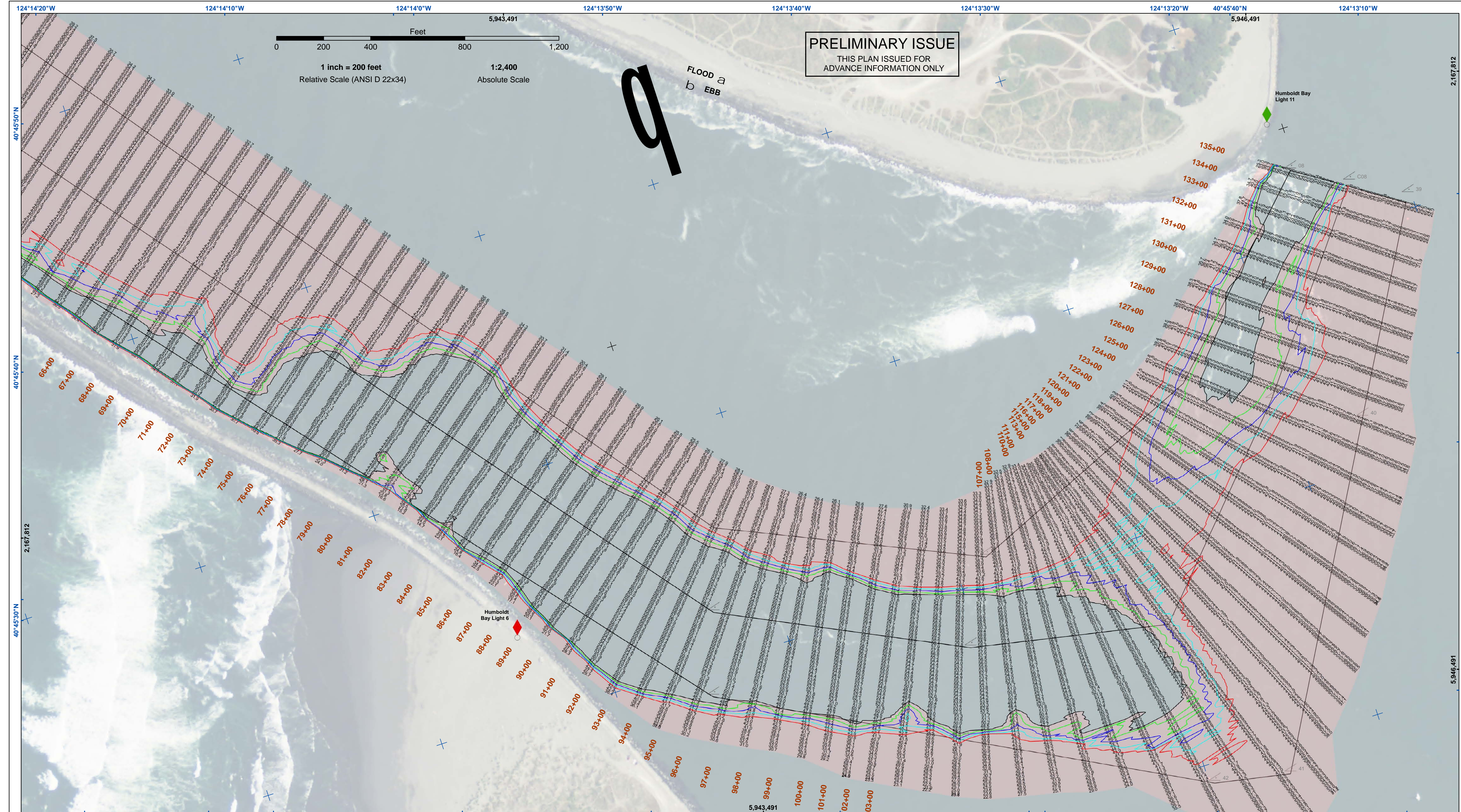
PROJECT DEPTHS ARE AS FOLLOWS:
BAR & ENTRANCE CHANNEL = 48 FEET
NORTH BAY, SAMOATO MILE 5.0 & = 38 FEET
EUREKA CHANNEL, FIELDS LANDING CHANNEL & MILE 5.0 TO "N" STREET = 26 FEET

1:00 INDICATES THE NUMBER AND BEGINNING OF A LINE OF SOUNDINGS.
SOUNDINGS ARE BASED ON TIDE GAUGES REFERENCED TO U.S.C. & G.S.

Vertical and Horizontal Control:
NOAA Station: 941 8767 - North Spit, CA
Benchmark:
NO 11 1940 (PID: LV0359)
MLLW Elev: 4.251m

Title:
RTK GPS, using GEOID12a and VDATUM
RTK elevations calibrated at 10.0ft nail at Coast Guard Station Humboldt Bay

Position:
RTK Positions



	Federal Navigation Channel		Beacon, General	Contours	
	Shoaling Area		Obstruction Point		-48
	Placement Area		Navigation Buoy		-47
	Anchorage Area		Navigation Buoy		-46
	Wreck Area		Shoalest Sounding*		-45
	Submerged Wreck				-44
	Zone_I_Angle_Points				

NOTES:
 DRAWINGS NOT TO BE USED AS NAVIGATION. ONLY CHANNEL CONDITION AT DATE OF SURVEY. THE LOCATION OF ALL NAVIGATION AIDS ARE BASED ON INFORMATION PROVIDED BY THE U.S. COAST GUARD. BUOY LOCATION REPRESENT THE POSITION OF THE SINKER ONLY.
 SURVEYED BY THE CORPS OF ENGINEERS.
 SOUNDINGS WERE TAKEN BY FATHOMETER AND ARE SHOWN TO THE NEAREST TENTHS OF A FOOT.
 SOUNDINGS ARE BASED ON THE DATUM OF MEAN LOWER LOW WATER AT THE LOCALITY.
 PLANE GRID AND COORDINATES ARE BASED ON THE STATE OF CALIFORNIA COORDINATE SYSTEM, LAMBERT CONFORMAL PROJECTION, ZONE 1 NAD 83, CALIFORNIA, AS DESCRIBED IN SPECIAL PUBLICATION NO. 235, PUBLISHED BY THE NATIONAL OCEAN SURVEY.
 PROJECT DEPTHS ARE AS FOLLOWS:
 BAR & ENTRANCE CHANNEL = 48 FEET
 NORTH BAY, SAMO TO MILE 5.0 & = 38 FEET
 EUREKA CHANNEL, FIELDS LANDING CHANNEL & MILE 5.0 TO "N" STREET = 26 FEET

1:00 INDICATES THE NUMBER AND BEGINNING OF A LINE OF SOUNDINGS.
 SOUNDINGS ARE BASED ON TIDE GAUGES REFERENCED TO U.S.C. & G.S.
 Vertical and Horizontal Control:
 NOAA Station: 941 8767 - North Spit, CA
 Benchmark:
 NO 11 1340 (PID: LV0359)
 MLLW Elev: 4.251m
 Tides:
 RTK GPS, using GEOID12a and VDATUM
 RTK elevations calibrated at 10.0ft nail at Coast Guard Station Humboldt Bay
 Position:
 RTK Positions

US Army Corps of Engineers
 San Francisco District
 1455 Market Street
 San Francisco, CA 94103

DISCLAIMER
 The United States Government furnishes this information for general information only. The user is responsible for the results of any application of the data for other than its intended purpose. The user is responsible for the results of any application of the data for other than its intended purpose. The user is responsible for the results of any application of the data for other than its intended purpose. The user is responsible for the results of any application of the data for other than its intended purpose.

Prepared Under the Direction of JOHN C. MORROW LT Colonel, C.E. District Engineer	Chart Date: Mar 06, 2017	Surveyed By: PDT	Designed By: PDT
Submitted: Hydro Survey Team Leader	Plotted By: PDT	Checked By: PDT	Drawn by: PDT
Recommended: Chief, Hydro Survey Section	Approved: Chief, Construction Branch		

CALIFORNIA
 HUMBOLDT COUNTY
**HUMBOLDT BAY
 BAR & ENTRANCE CHANNEL
 CONDITION SURVEY
 1-4 MARCH 2017**

**Sheet
 Number
 2 of 2**